



FABRICS-STORE.COM

*Our linen is nothing short of addicting*

## ATTENTION! HOW TO ACCESS YOUR PATTERN

Your complete pattern is packaged in this PDF but you risk viewing it incorrectly if you don't follow these simple instructions. It's as easy as 1, 2, 3!

### STEP 1

Join millions of other seamstresses who trust Adobe Reader to view their PDF patterns:

[Download Adobe Acrobat Reader Here For Free](#)

### STEP 2

Open this PDF document in your Adobe Reader program to access all of your special, digital pattern features:

[Stuck? Here's How To Open Files In Adobe Acrobat](#)

### STEP 3

Almost done! This is the most important step. In Adobe Reader, click on the "📎" and "📁" to view your pattern files.

[Need Help? Here's How To View Attachments](#)

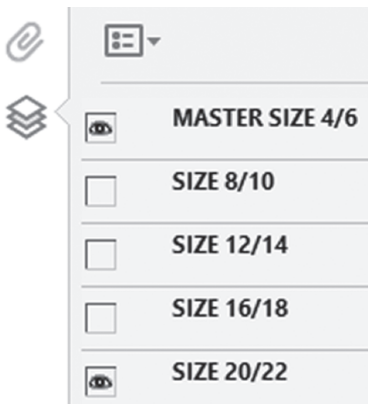
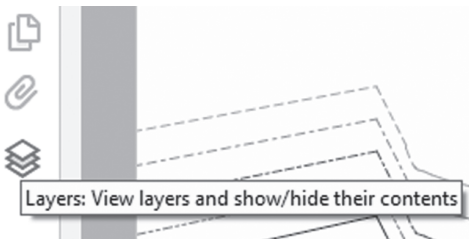
## 2" Square Scale Test

Please choose size based on desired finished garment measurement.  
2 yards washed linen for all sizes.

4/6 Finished Garment Bust 38"  
8/10 Finished Garment Bust 40"  
12/14 Finished Garment Bust 42"  
16/18 Finished Garment Bust 45"  
20/22 Finished Garment Bust 48"

### Layered PDF:

Turn on/off each size you would like to print, or print all.



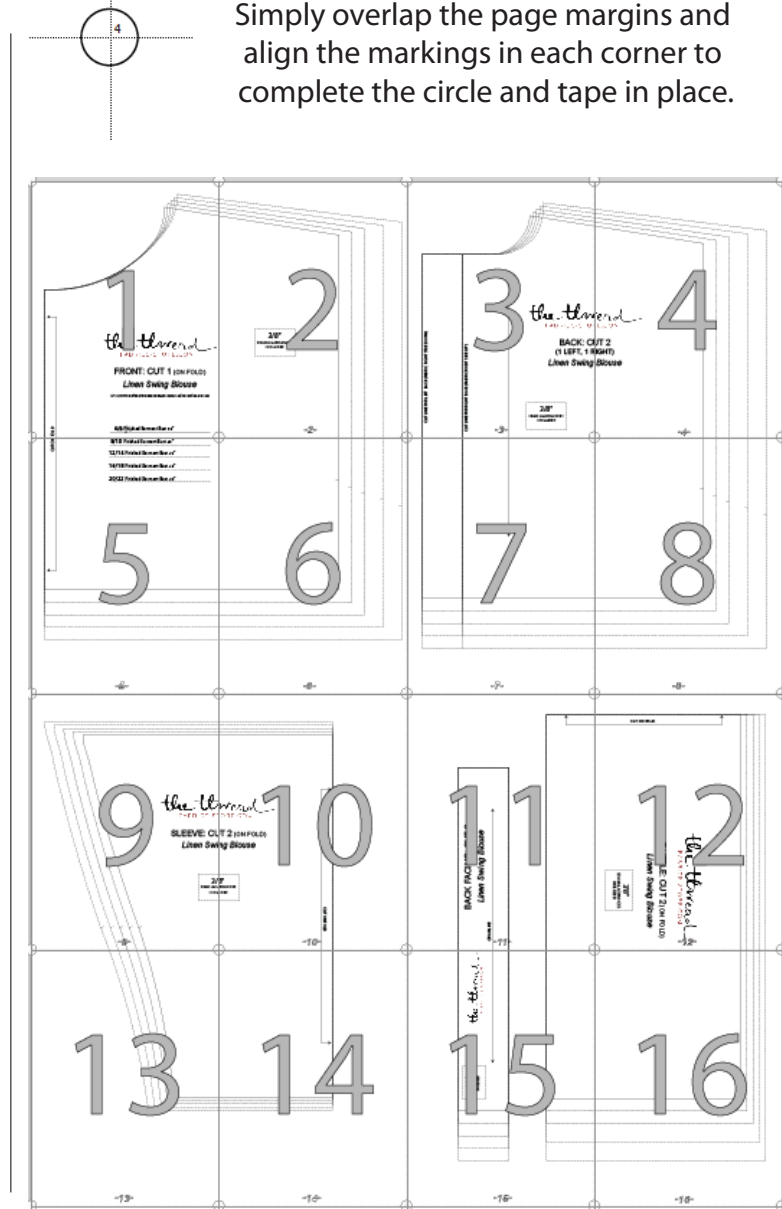
## PRINT ONLY THIS PAGE FIRST TO CHECK SCALE

IMPORTANT! PRINT AT 100% SCALE  
PRINT USING CURRENT ADOBE ACROBAT READER

Get it FREE- <https://get.adobe.com/reader/>

*Formatted for paper sizes A4 and Letter.*

Simply overlap the page margins and align the markings in each corner to complete the circle and tape in place.





the thread  
FABRICS-STORE.COM

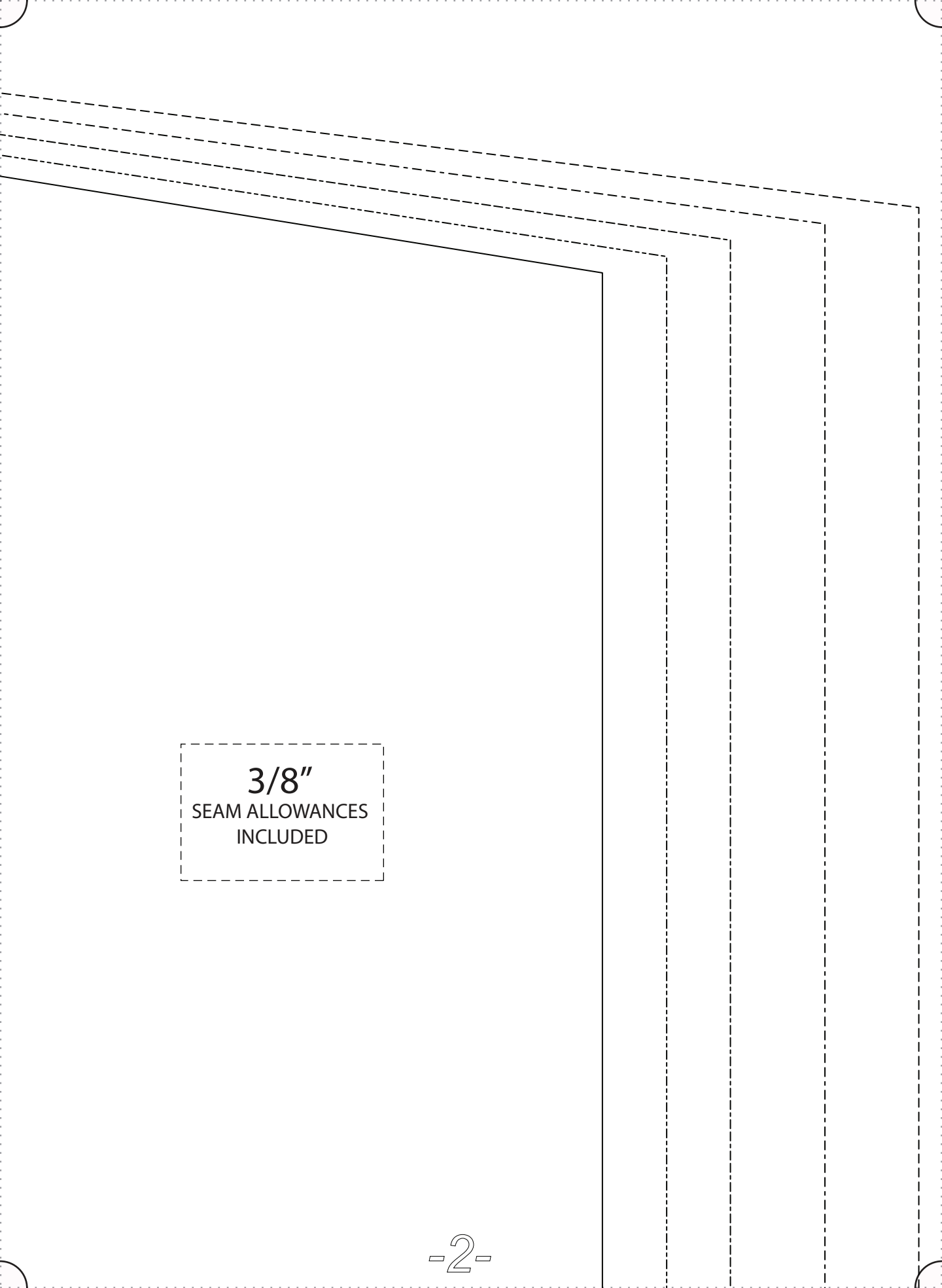
FRONT: CUT 1 (ON FOLD)

*Linen Swing Blouse*

<http://www.fabrics-store.com/blog/2015/02/16/linen-swing-blouse/>

FOLD

4/6  Finished Garment Bust 38"



**3/8"**  
SEAM ALLOWANCES  
INCLUDED

CUT LINE FOR LEFT BACK (FABRIC RIGHT SIDE DOWN)

CUT LINE FOR RIGHT BACK (FABRIC RIGHT SIDE UP)

*the thread*  
FABRICS-STORE

BACK: CUT  
(1 LEFT, 1 RIGHT)  
*Linen Swing*

3/8"  
SEAM ALLOWANCES  
INCLUDED

read  
RE.COM

UT 2  
(RIGHT)

*Blouse*

CUT ON I

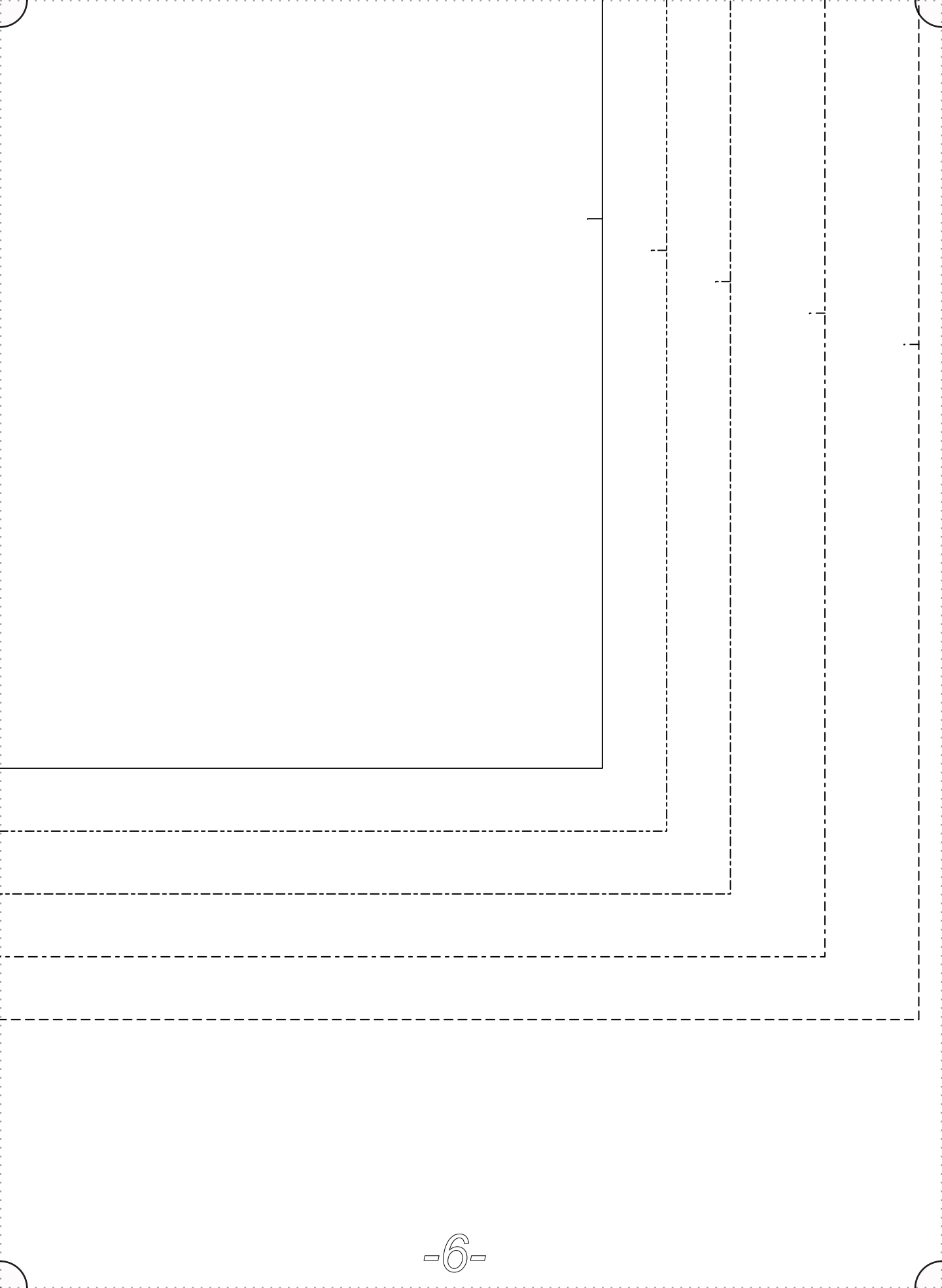
8/10 Finished Garment Bust 40"

12/14 Finished Garment Bust 42"

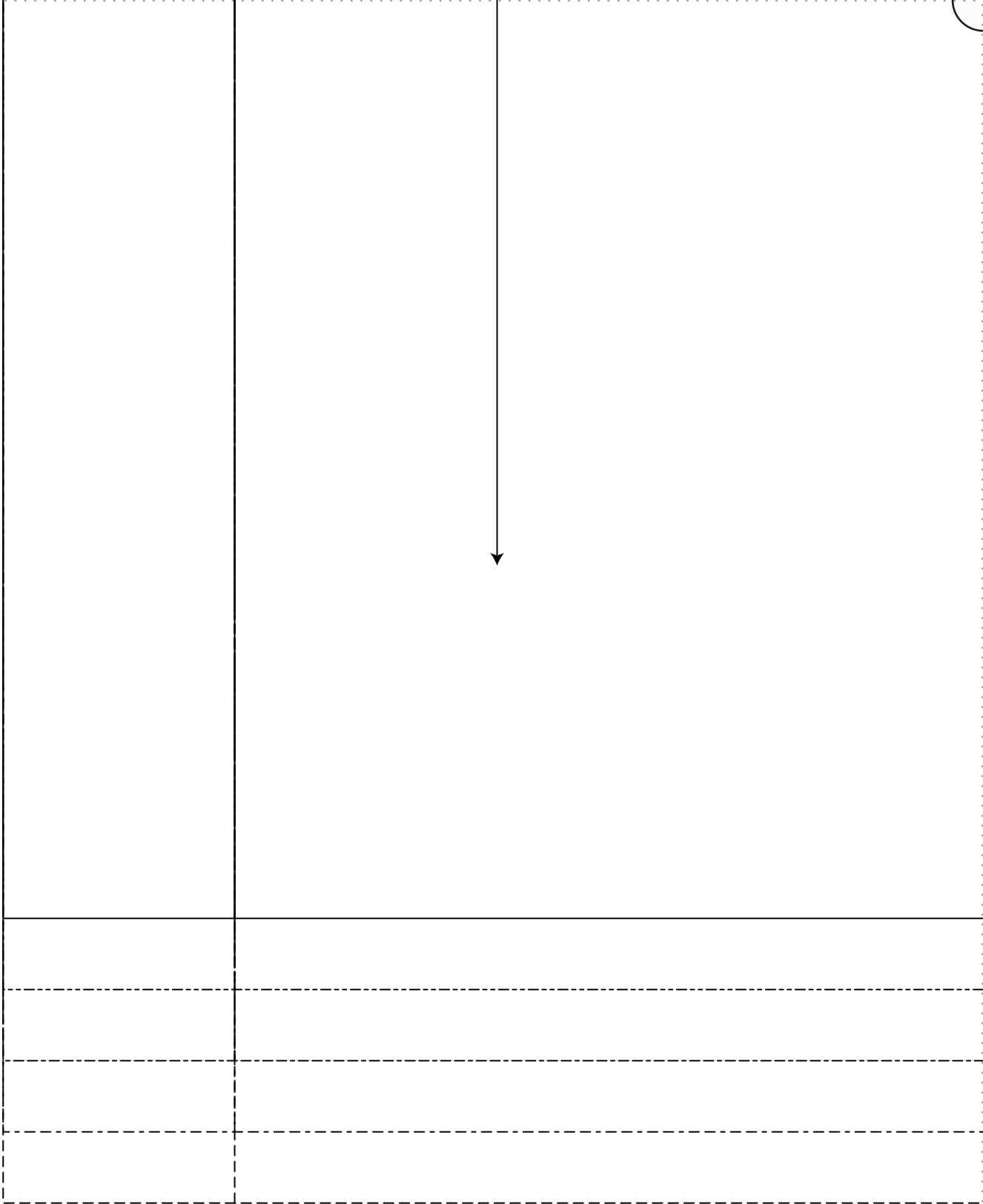
16/18 Finished Garment Bust 45"

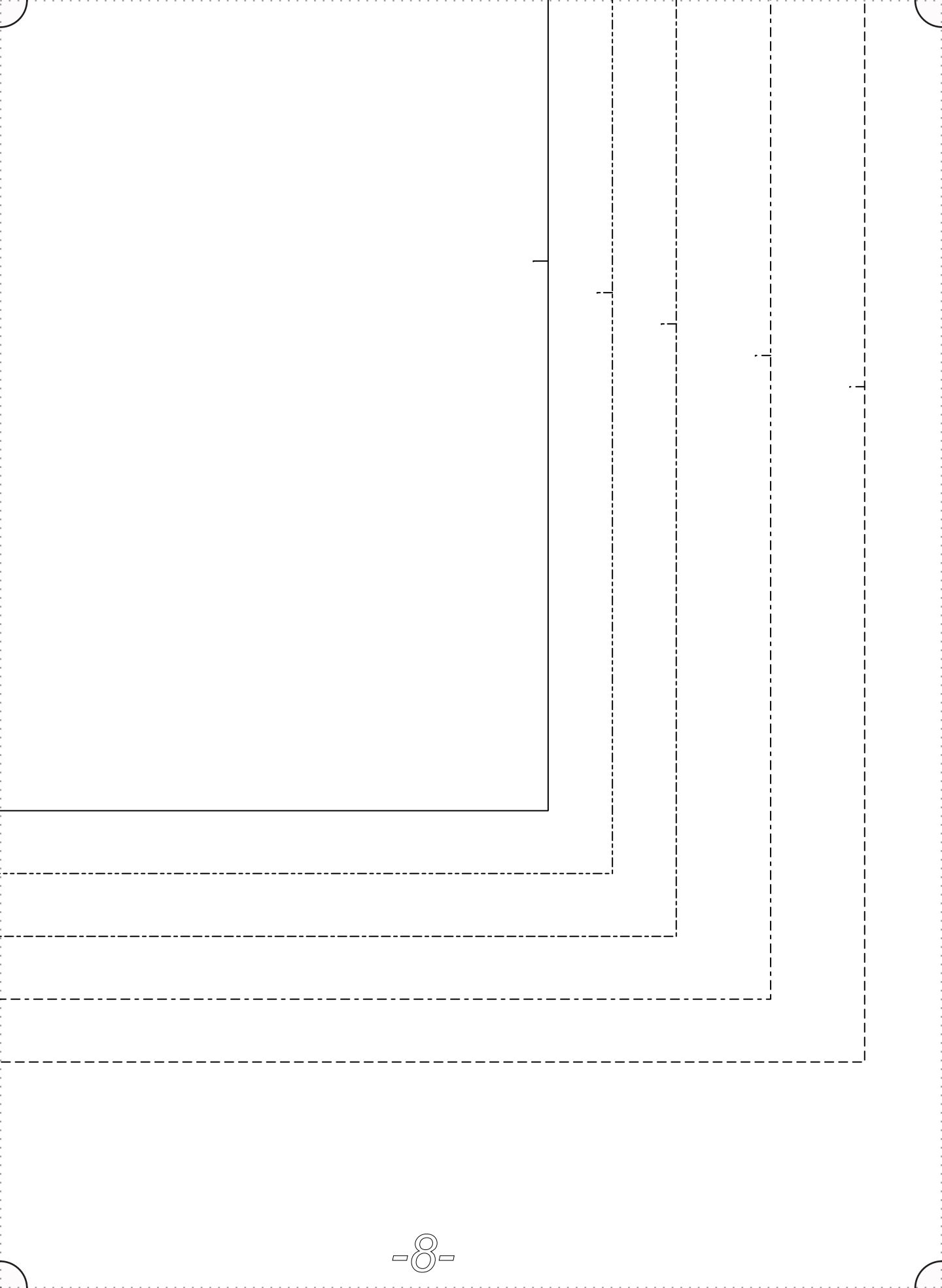
20/22 Finished Garment Bust 48"

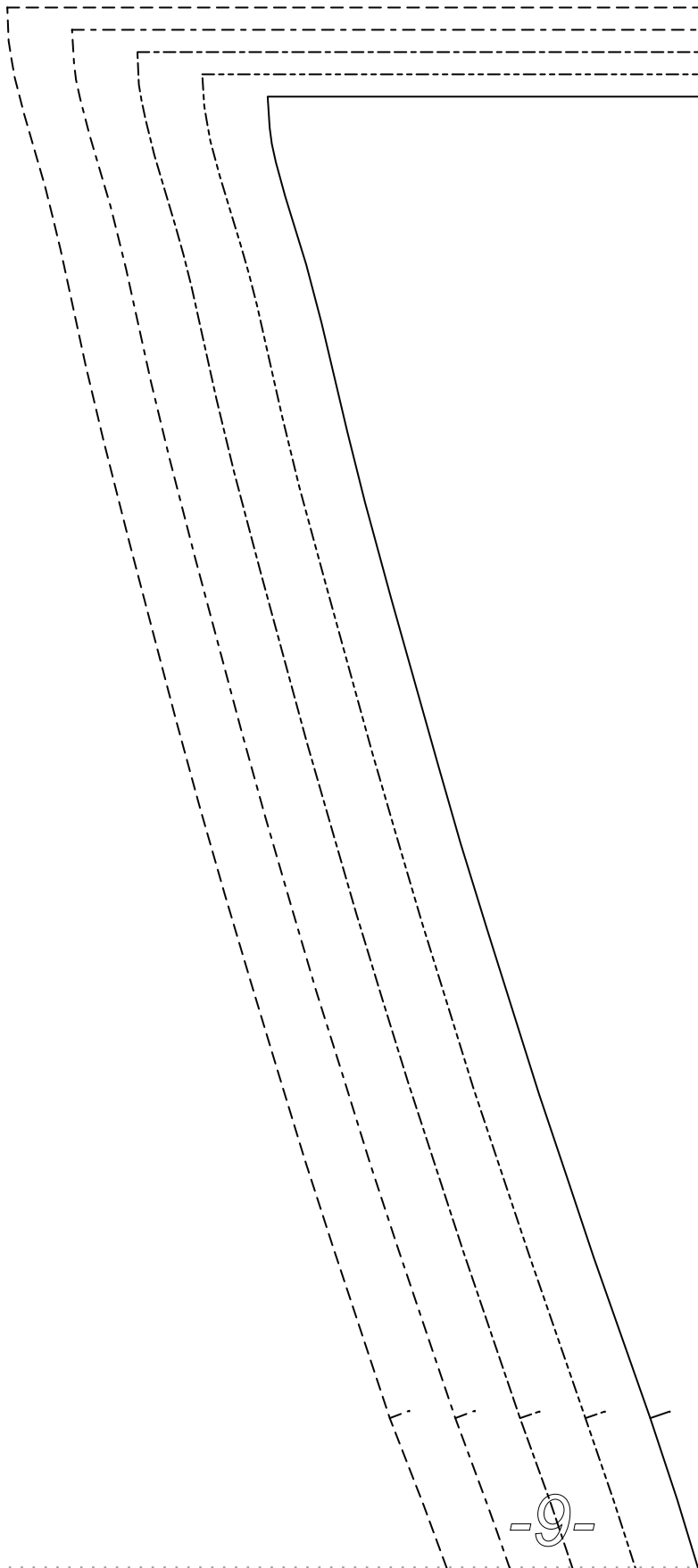












the th

FABRICS-ST

SLEEVE: CU

*Linen Swi*

3/4  
SEAM ALLG  
INCLU

weard  
STORE.COM

PART 2 (ON FOLD)

ing Blouse

8"  
ADVANCES  
ADDED



CUT ON FOLD

**BACK FACING: CUT 2**

*Linen Swing Blouse*

GRAINLINE



CUT ON FOLD

*The Thread*  
FABRICS-STORE.COM

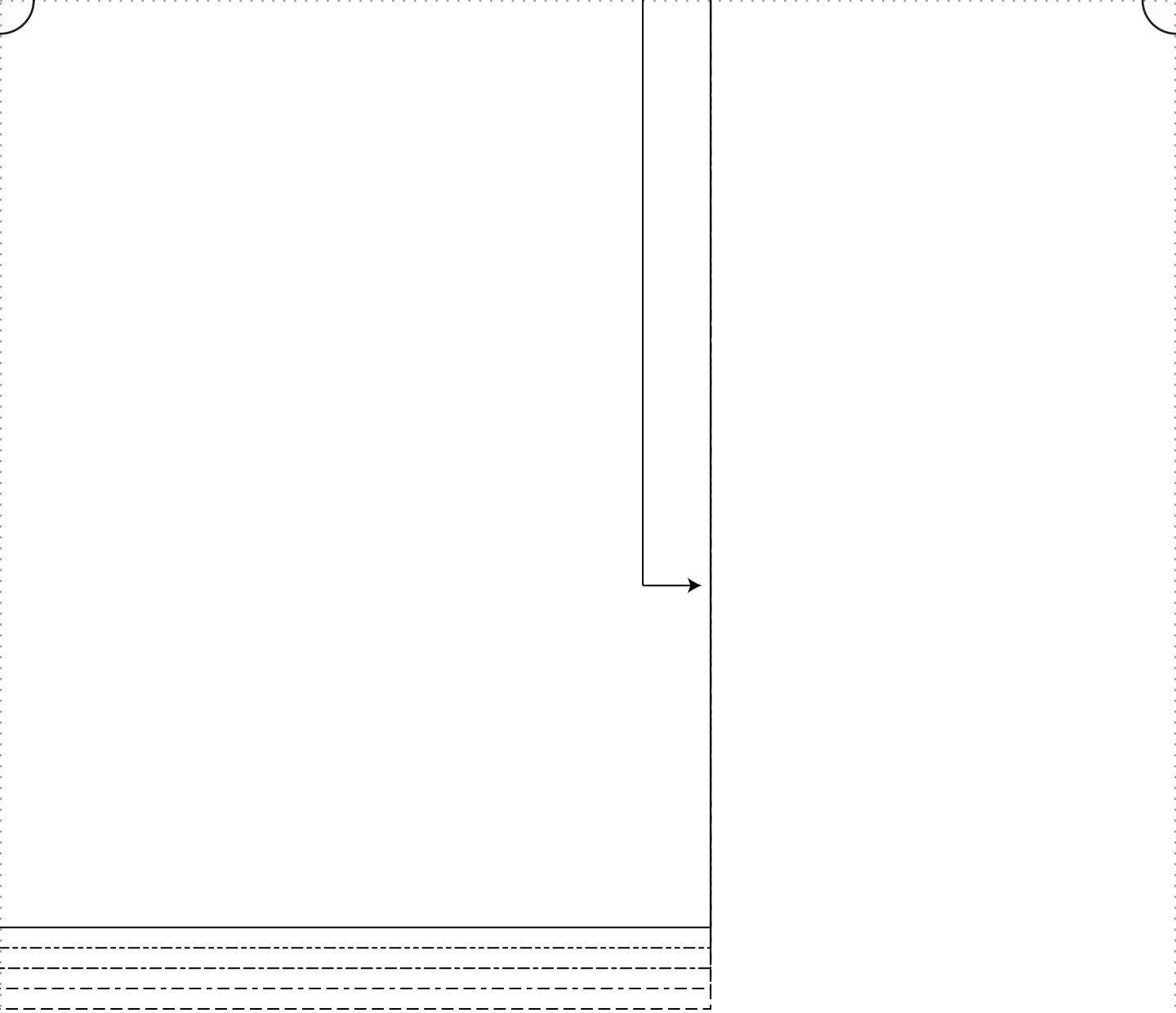
-12-

RUFFLE: CUT 2 (ON FOLD)

*Linen Swing Blouse*

3/8"  
SEAM ALLOWANCES  
INCLUDED







*the thread*  
FABRICS-STORE.COM

3/8"  
SEAM ALLOWANCES  
INCLUDED



