

F|S

FABRICS-STORE.COM

Our linen is nothing short of addicting

SOFIA SKIRT



WONDERFULLY WRAPPED

*Linen becomes fluid with our fit-and-flair maxi skirt.
Easy and comfortable to wear with an adjustable wrap
front and side tie closure.*

Misses and Women Sizes Included

866.620.2008 ASK@FABRICS-STORE.COM FABRICS-STORE.COM

SOFIA PATTERN

Sofia is a long, maxi-length wrap skirt with a full A-line shape, and “fit and flair” seam shaping.

Sized for ladies 0/2 to 28/30

Simple instructions for the confident beginner sewist.

LAURA IS WEARING IL020 3.5oz SOFTENED LINEN IN COBALT



Our lovely model Laura is 5'10" and wearing size 4/6 of this pattern with 3 inches added to the bottom hem length.

PATTERN DETAILS



SOFIA SKIRT

Sizes: 0/2 to 28/30

- Long maxi length
- Slightly longer back “sweep”
- Full A-line volume at hem
- “Fit and flair” seam shaping
- Adjustable wrap fit with ties
- Semi-fitted at waist and hips
- Slit hole in waistband for tie pass
- Front waist darts

FABRICS & SUPPLIES **Fabrics:**

- Main fabric: medium/light weight linen
- For a refined look, we chose our 3.5 ounce IL020 with finer, smoother threads.
- Optional: Interlining for waistband.

SIZING & YARDAGE

Misses/Women's Size Guide Based on Body Measurements in Inches

Size	0/2	4/6	8/10	12/14	16/18	20/22	24/26	28/30
Bust	33-34	35-36	37-38	39-40	42-44	46-48	50-52	54-56
Waist	25-26	27-28	29-30	31-32	34-36	38-40	42-44	46-48
Hip	35-36	37-38	39-40	41-42	44-46	48-50	52-54	56-58

Finished Garment Measurements - Approximate in Inches

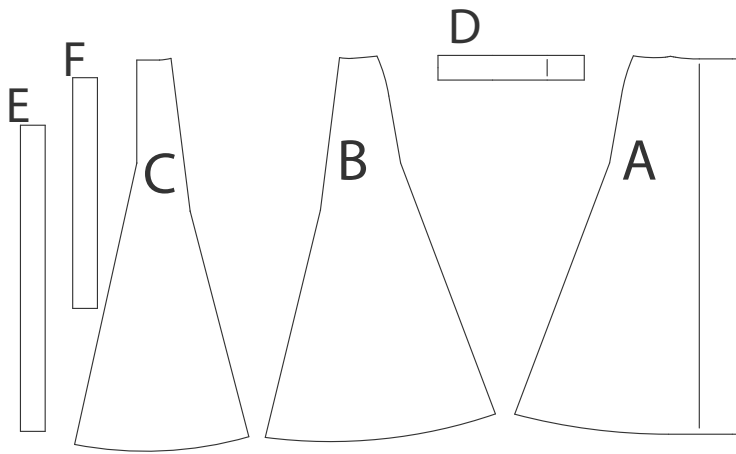
Size	0/2	4/6	8/10	12/14	16/18	20/22	24/26	28/30
Waist	25	27	29	31	35	39	43	47
Hips	38	40	42	44	48	52	56	60
Skirt Length	44	44 1/4	44 5/9	44 7/8	45 1/3	45 3/4	46 1/6	46 3/5

Estimated Yardage - 54" Width Linen - Shrinkage Has Been Calculated

Size	0/2	4/6	8/10	12/14	16/18	20/22	24/26	28/30
Main Fabric	4 yards				5 yards			

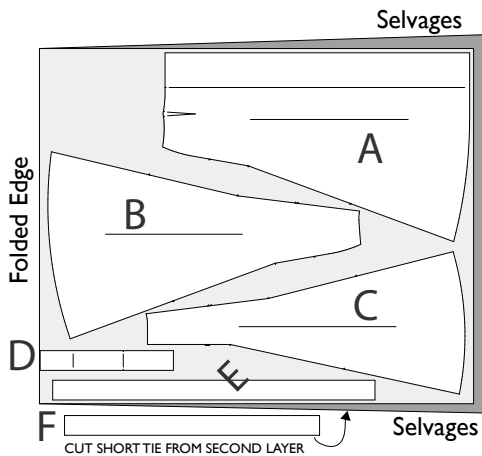
PATTERN & CUTTING GUIDES

PATTERN PIECE REFERENCE



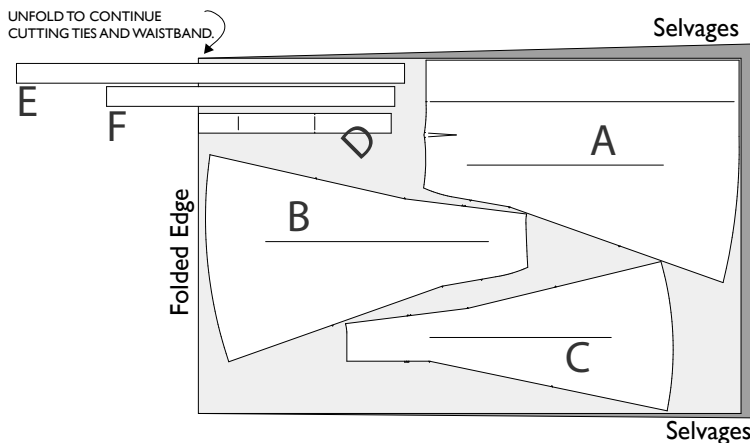
- A: FRONT - CUT 2 IN LINEN "FACE TO FACE"
- B: SIDE BACK - CUT 2 IN LINEN "FACE TO FACE"
- C: BACK- CUT 2 IN LINEN "FACE TO FACE"
- D: WAISTBAND- CUT 1 IN LINEN "ON FOLD",
CUT 1 IN INTERLINING "ON FOLD"
- E: LONG TIE- CUT 1 IN LINEN
- F: SHORT TIE- CUT 1 IN LINEN

CUTTING LAYOUT EXAMPLES



RIGHT SIDE OF PATTERN	BACK SIDE OF PATTERN	RIGHT SIDE OF FABRIC	WRONG SIDE OF FABRIC

Sizes 0 to 14
(example is size 14)
4 yards



Sizes 16 to 30
(example is size 30)
5 yards

SEWING & PREPARATION TIPS:

Sewing with quality linen from Fabrics-Store is very enjoyable! Linen is a stable fabric that does not easily shift or slip, which is a very helpful characteristic for sewing a neat and even seam with little effort. You do not need to “push” or “pull” the fabric while sewing... just simply guide it.

Pre-washing: You will want to prewash and dry your linen fabric in the same manner you would your finished garment. This will soften your fabric, and eliminate further shrinkage in your final garment.

If you plan on only dry cleaning your final garment, likewise you will want to dry clean the fabric before cutting and sewing. Secure the raw edges with a zig-zag or serger stitch before washing to avoid fraying. You may also sew the two raw edges together to form a continuous piece to avoid twisting in the wash. Remove fabric from dryer while it is still slightly moist. Press any deep creases or wrinkles using your iron's steam setting with high heat, using a protective press cloth if needed to avoid scorching.

Fine Seaming: To ensure that your seaming will last as long as your linen garment, we encourage “single-needle” tailoring and French seaming. Once you think of French seams as simply sewing the seam twice to encase the raw edges, you will see that it does not take that much more time than the second step of using a serger. Setting the stitch length on your sewing machine to 2mm (about 12-14 stitches per inch) makes for a very durable seam, and is also an attractive indication of fine tailoring.

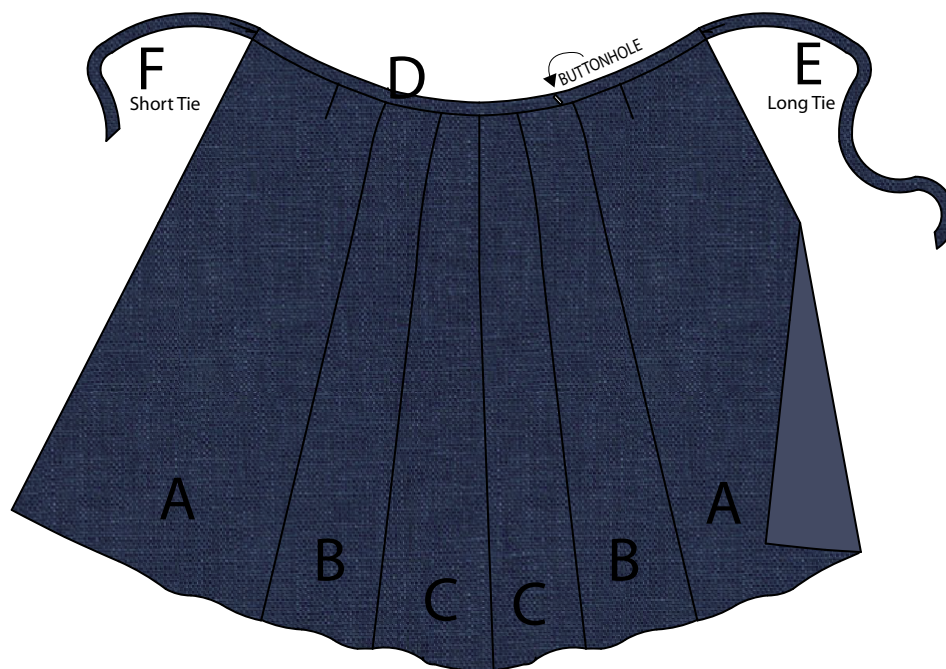
Alternate Seaming: If you instead prefer to stitch your seams regularly and serge the raw edges, simply sew the seams with the full 5/8” allowance. You can then serge the raw edges, allowing the machine to trim 1/8” off the edges. This will result in seam allowances finishing at 1/2”.

Pressing: For best results, it is highly recommended that you press your seams as you finish sewing each of them. Pressing with a steam iron (and press cloth if needed) will help “set” the stitches into the fabric. You will find it is much easier to press your seams “as you go” instead of trying to press them all after the garment is finished.

Sewing Glossary: If certain sewing terms and techniques are new to you, please refer to the sewing glossary at the end of this document.

SEWING INSTRUCTIONS:

1. Prepare ties: Fold each tie in half length wise with right sides together. Sew a 1/2" seam around the long side and one short side of each tie. Turn them inside out, neatly press.
2. Prepare waistband: With right sides together, sew the raw edge of each appropriate tie into the short edges of the waistband with 1/2" seam allowance. Turn right side out, and press a crease into the upper edge of waistband.
3. Skirt seaming: 5/8" seam allowances. Pin all adjoining seams together. The front remains "open". If sewing with a French seam remember to start with wrong sides together, stitching a 1/4" seam for the first pass. Press seam to one side, fold right sides together encasing the raw edge. Do the second pass of the seam at 3/8". This is a total of 5/8". You can also choose to do a regular seam of 5/8" with serged or zig-zagged edges.
4. Hem edges of front skirt opening: 3/4" seam allowances for this edge. Turn under 3/8" and press. Turn under again another 3/8" and topstitch
5. Sew on waistband. With right sides together, sew the outside layer of the waistband to the waist of the skirt with 1/2" seam allowance. Be sure to check that the left and right ties are arranged correctly. Clean finish the inside edge by tucking under the 1/2" seam allowance and hand sew or machine topstitch.
6. Sew buttonhole slit through the waistband at the side back as indicated on the pattern. This will allow the under-tie to slip through to the outside to neatly continue wrapping around the waist.
7. Hem the bottom. 3/4" seam allowance. Turn under 3/8" and press. Turn under again another 3/8" and topstitch.



Glossary:

Basting Stitch: A temporary hand or machine loose or long stitch to hold a seam in place before sewing the final permanent stitching.

Bias grain: In woven fabrics, this is the diagonal direction at 45 degrees to the grain and crossgrain. There are two bias directions in the cloth, perpendicular to each other.

Buttonhole: A slit in the fabric to fasten a button. The raw edges of the slit are finished with a machine or hand sewn zig-zag stitch.

Edge stitch: A row of top stitching very close to a seamed edge or folded edge, usually about 1/16th of an inch.

Fabric- right side: The side of the fabric which will be the exposed, outside part of a garment.

Fabric- wrong side: The inside of the fabric which will be the unexposed side or inside of a garment.

French seam: A seam sewn in two steps to encase the raw edges of the fabric within itself, giving a clean finish. 1- Wrong sides together, sew 1/4" seam. 2- Turn right sides together, stitch 3/8" seam. Total 5/8" seam allowance.

Grainline- cross grain: The direction of fabric going from selvage edge to selvage edge. In woven fabric, these would also be known as the weft threads of the weave.

Grainline- on grain: The direction of fabric running parallel to the selvage edge of the cloth. This is also referred to as the "lengthwise grain". In woven fabric, these would also be known as the "warp" threads of the weave.

Notch- outward: Markings on the pattern that indicate an outward triangular cut outside the seam allowance. Notch markings will be arranged to show where two seam edges join properly together. A single wedge will often indicate a front piece, and 2 to 3 wedges together can indicate back pieces.

Notch- snip: Markings on the pattern that indicate a small "snip" into the seam allowance. Notch marking will be arranged to show where two seam edges join properly together. A single notch will often indicate a front piece, and 2 to 3 notches together can indicate back pieces.

Overlock machine: A specialized sewing machine designed to sew and cut along the raw edge of a fabric seam with a networked stitch to secure the edges from fraying. Also known as a "serger" machine.

Glossary (continued):

Press cloth: A piece of cloth used to lay over a garment to protect it while ironing from burning or scorching. Usually made of cotton or linen or wool.

Raw edge: The cut edge of fabric. If not secured with stitching or a finishing, the raw edge of a fabric can fray or unravel.

Seam allowance: The distance from the cut edge of a pattern piece to the sewing line. Seam allowances can vary, so be sure to double check the indicated amounts on your pattern.

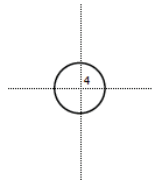
“Sofia” Sewing Pattern (Part 1)

2 Inch
Square to
Check Print
Accuracy

PRINT ONLY THIS PAGE FIRST TO CHECK SCALE

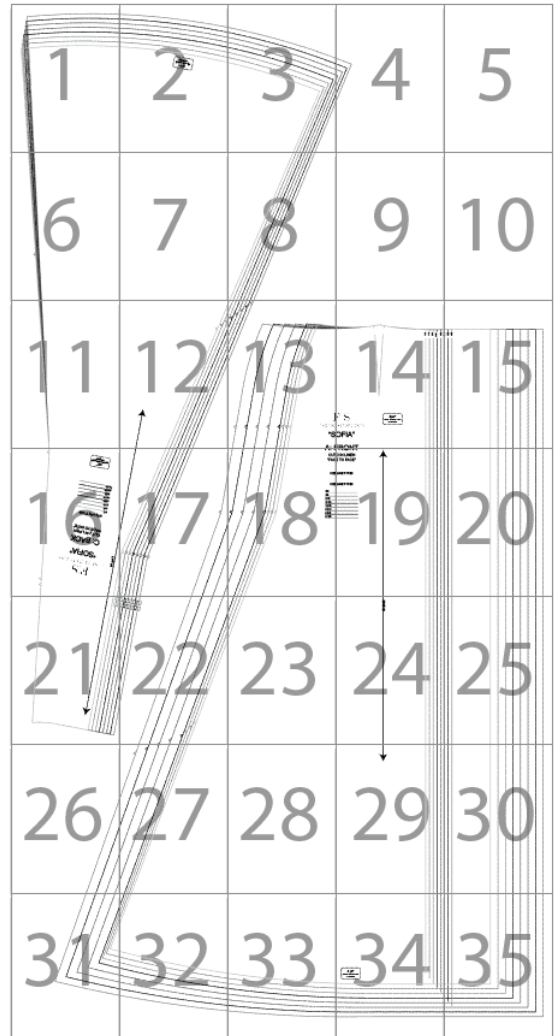
IMPORTANT! PRINT AT ACTUAL SIZE, 100%, OR NO SCALING.

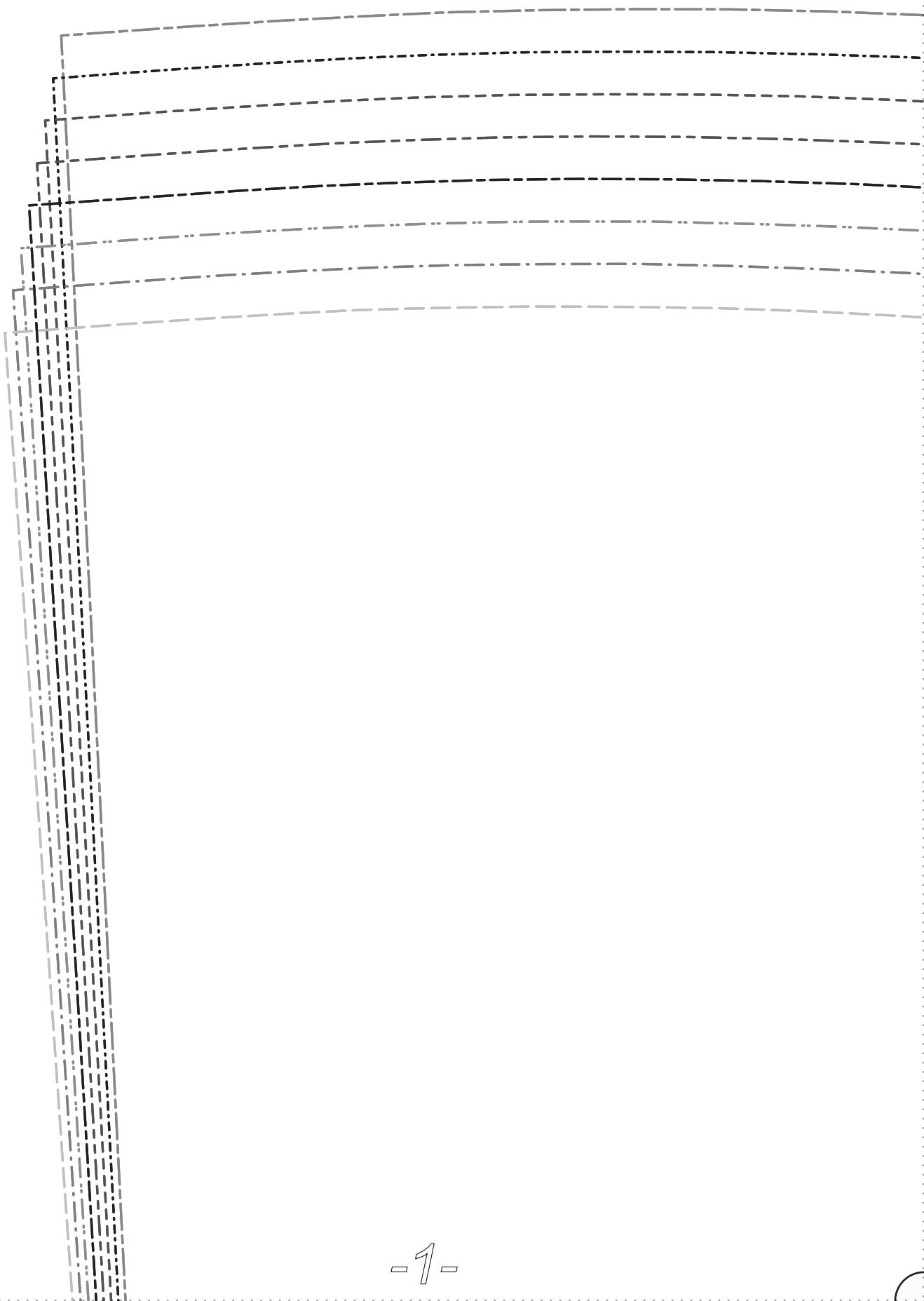
Formatted for paper sizes A4 and Letter.

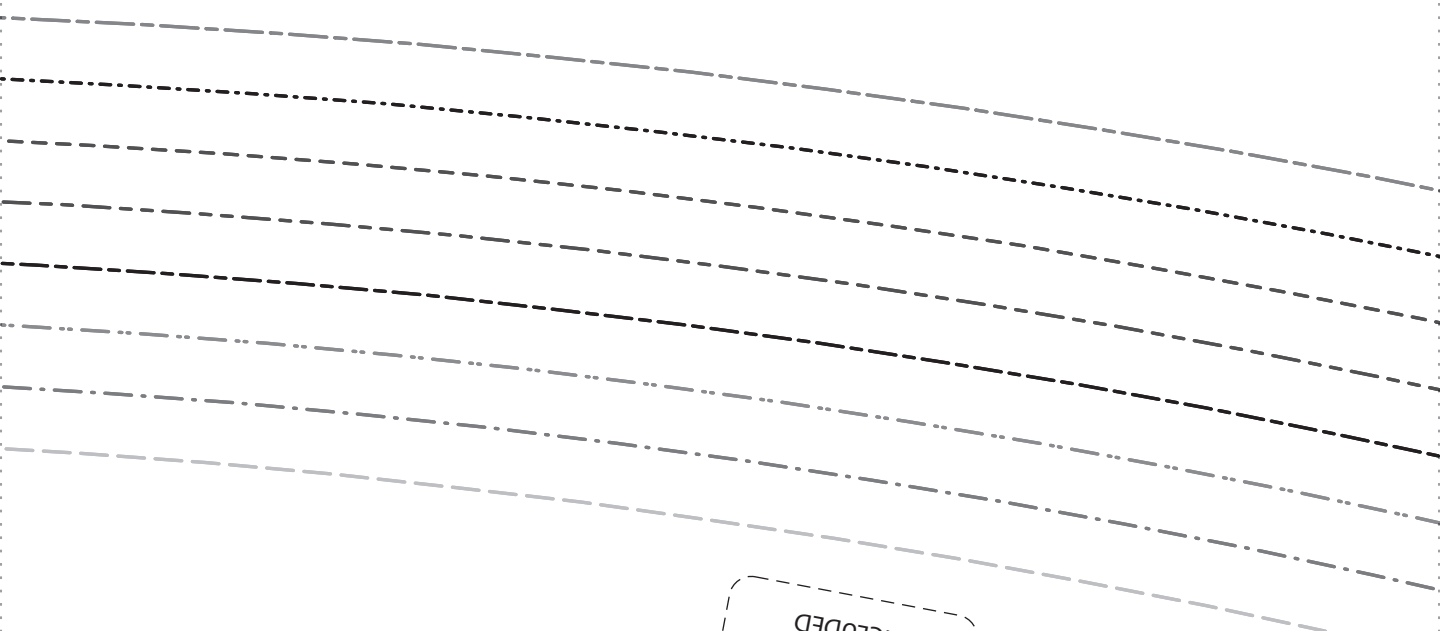


Simply overlap the page margins and align the markings in each corner to complete the circle and tape in place. If desired, trim right & bottom margins.

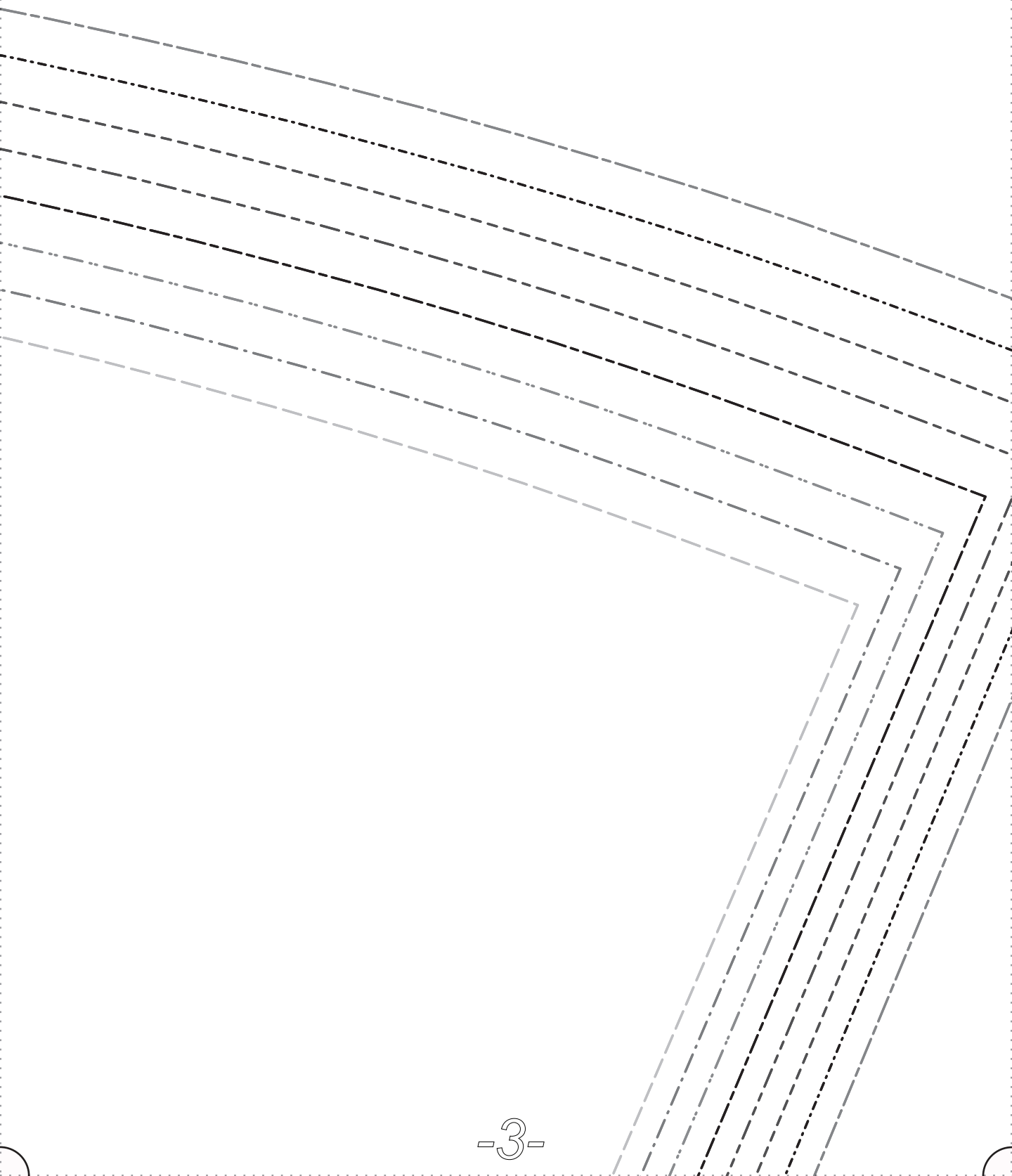
Layered PDF:
This pattern has embedded layers so you can print all sizes or a single size. See your .pdf viewers 'Layers' menu.

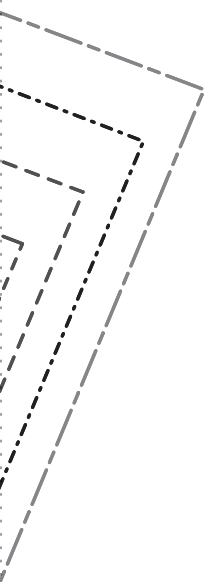


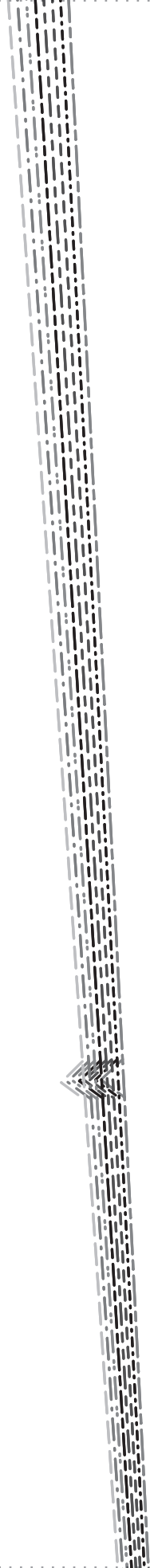


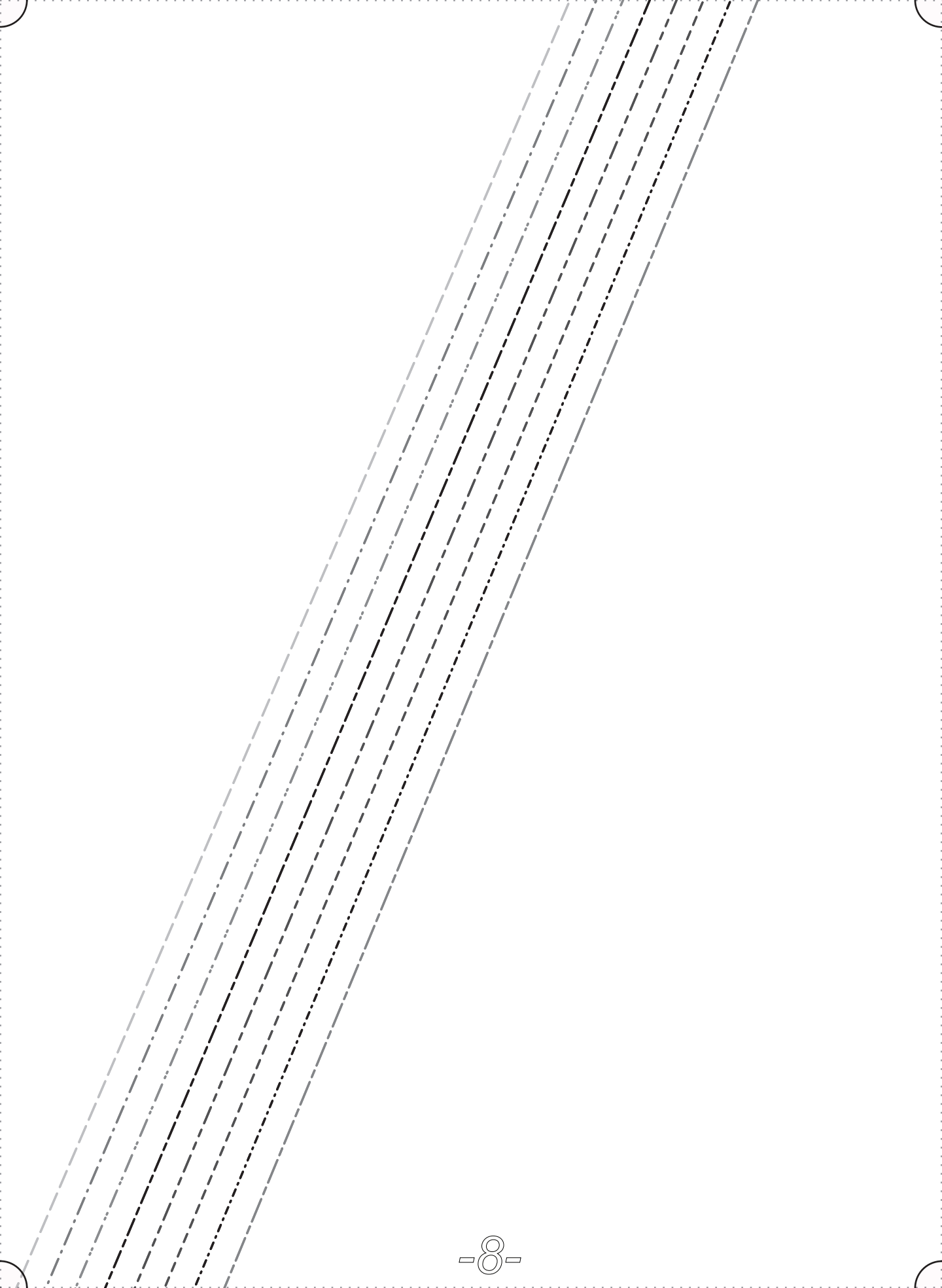


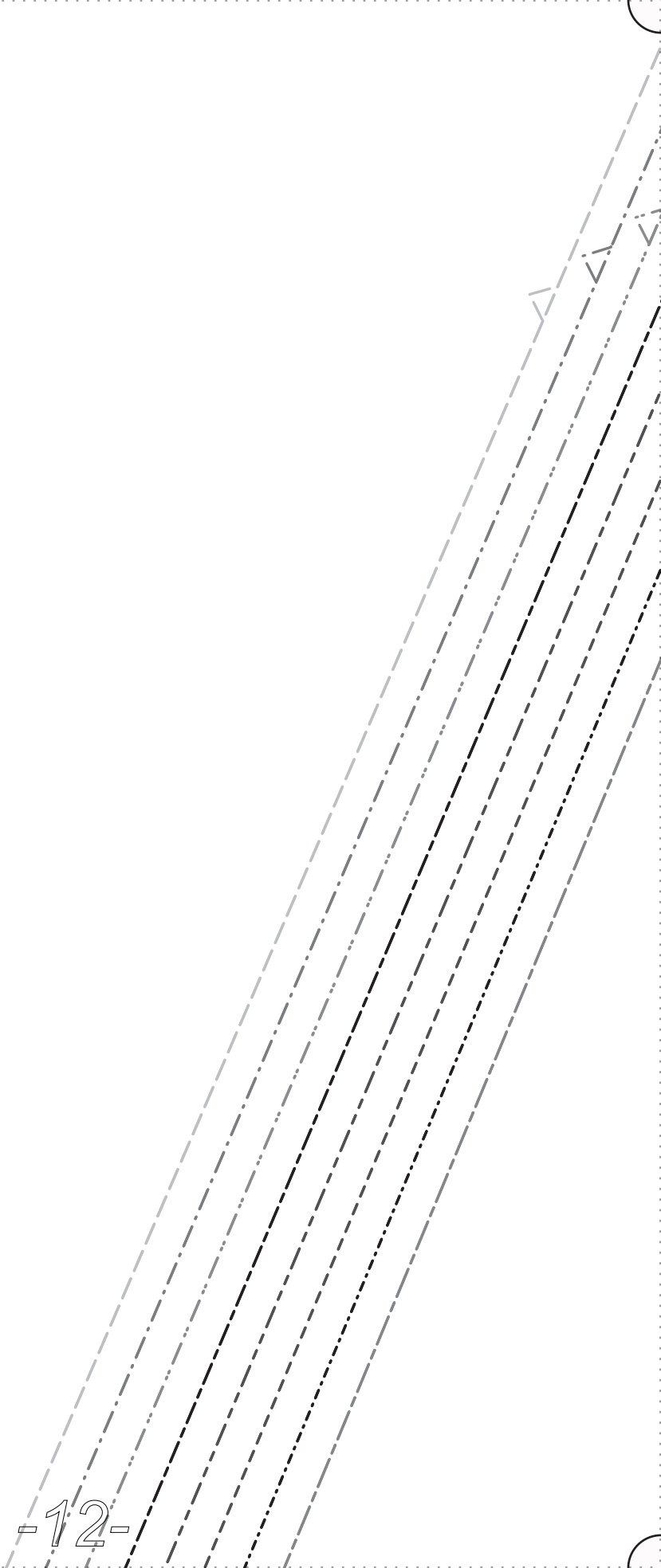
3/4"
HEM ALLOWANCES
INCLUDED

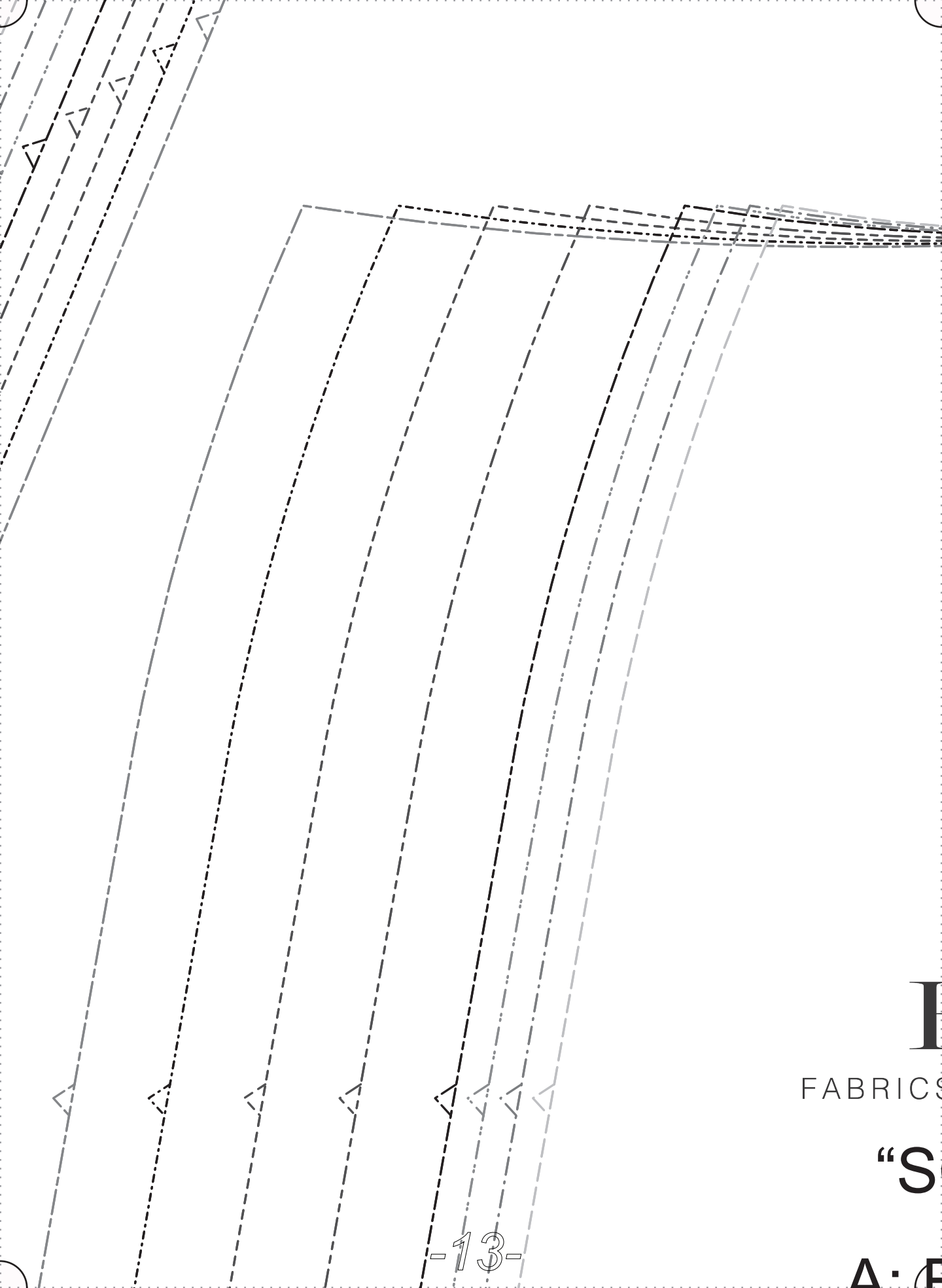








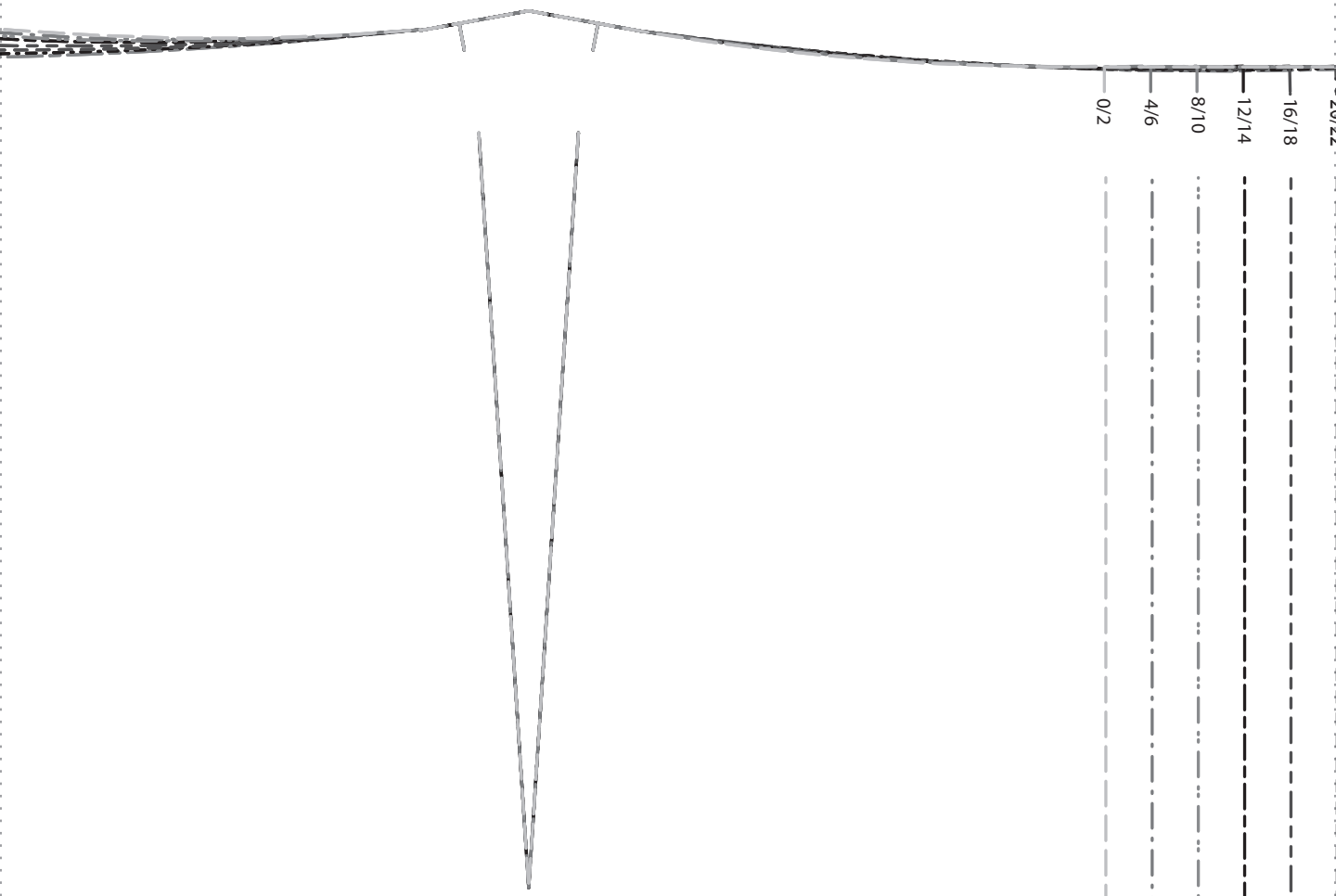




FABRICS

“S

A·E



F|S
S-STORE.COM

5/8"
SEAM ALLOWANCES
INCLUDED

OFIA"

FRONT

20/23

24/26

28/30

5/8"
SEAM ALLOWANCES
INCLUDED

SIZE LINE TYPES

0/2	-----
4/6	-----
8/10	-----
12/14	-----
16/18	-----
20/22	-----
24/26	-----
28/30	-----

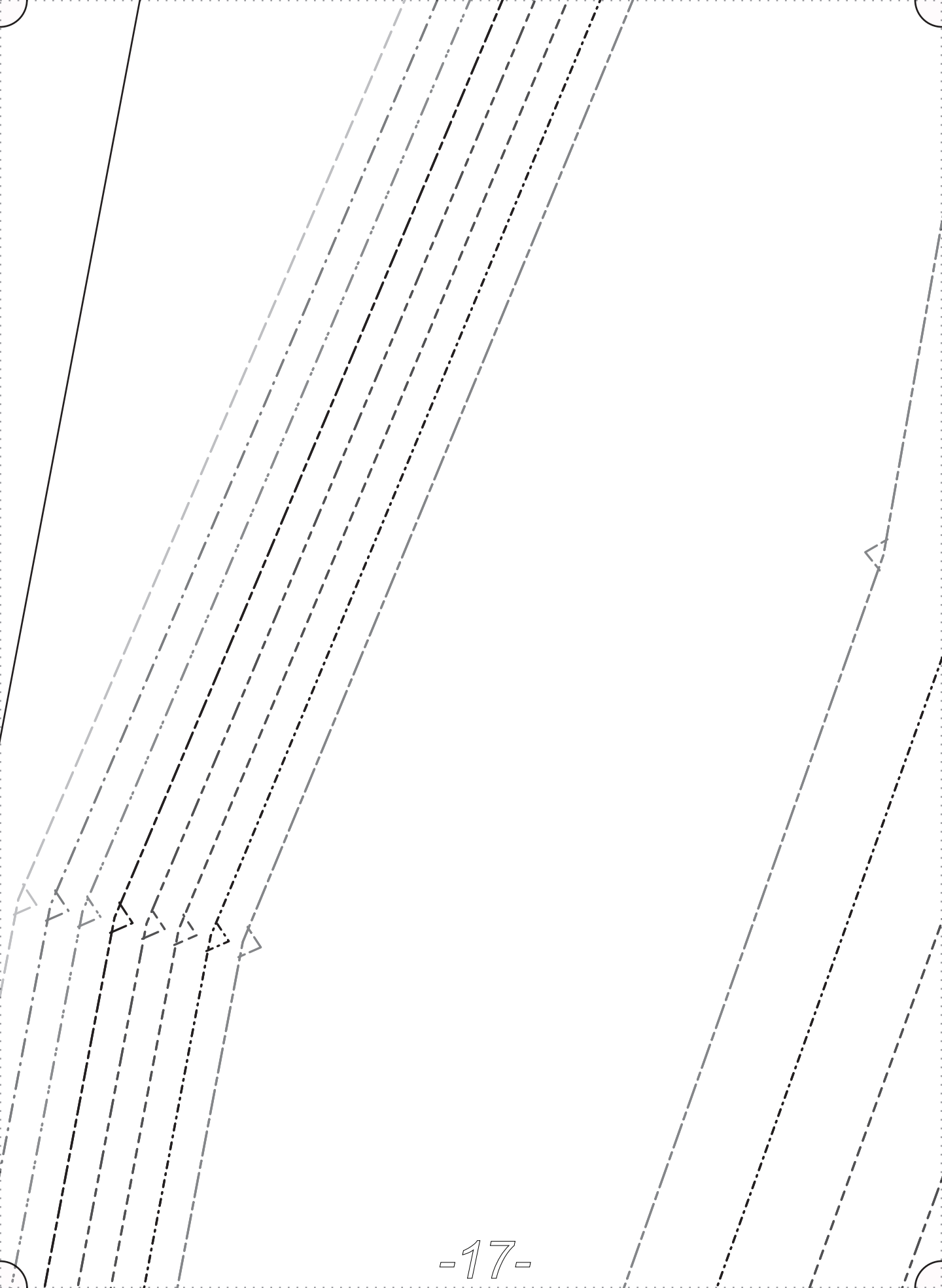
C: BACK
CUT 2 IN LINEN
"FACE TO FACE"

"SOFIA"

FABRICS-STORE.COM

E/S

GRAINLINE



A. I.
CUT
"FAC

SIZE

SIZE

0/2

4/6

8/10

12/14

16/18

20/22

24/26

28/30

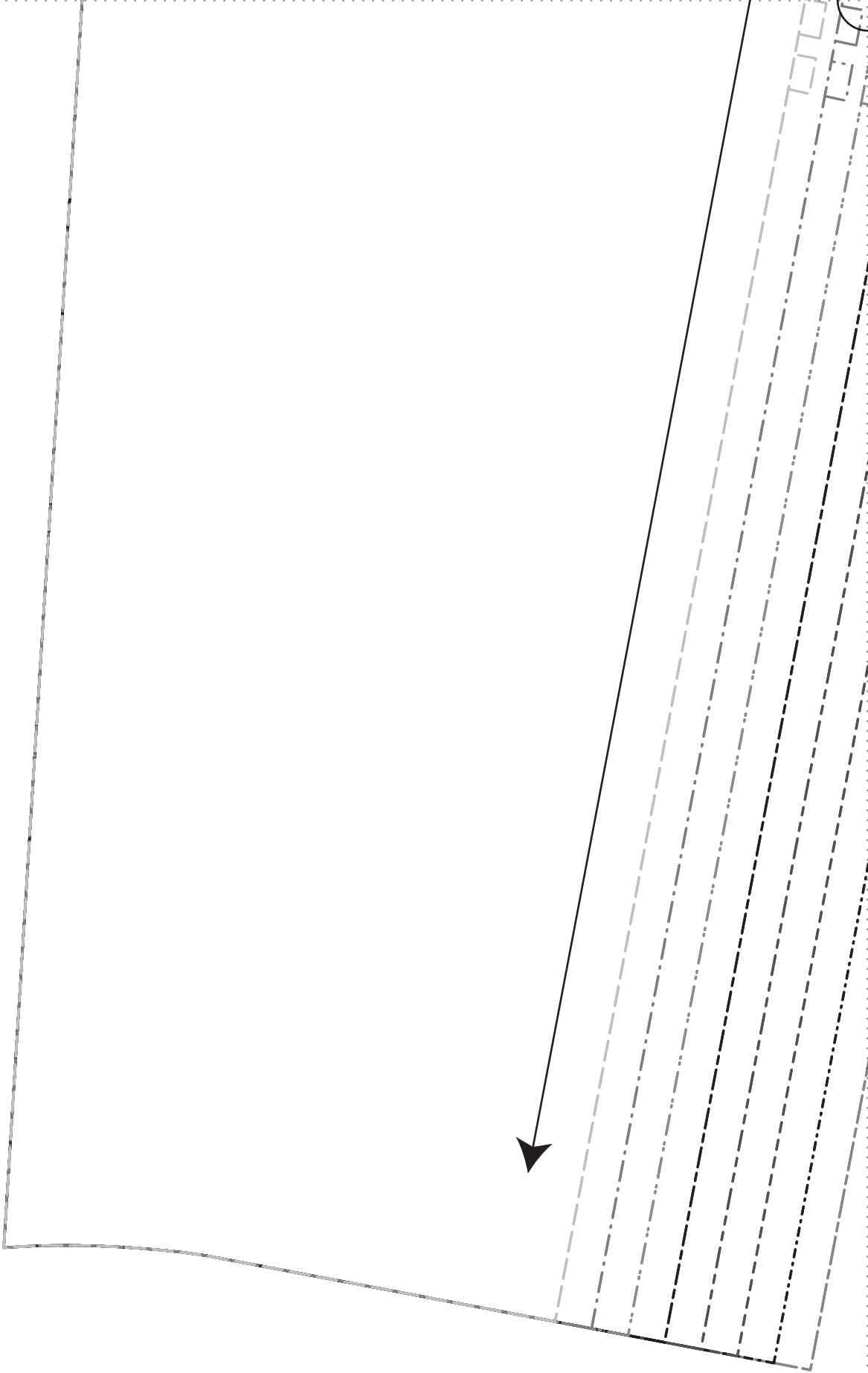
FRONT

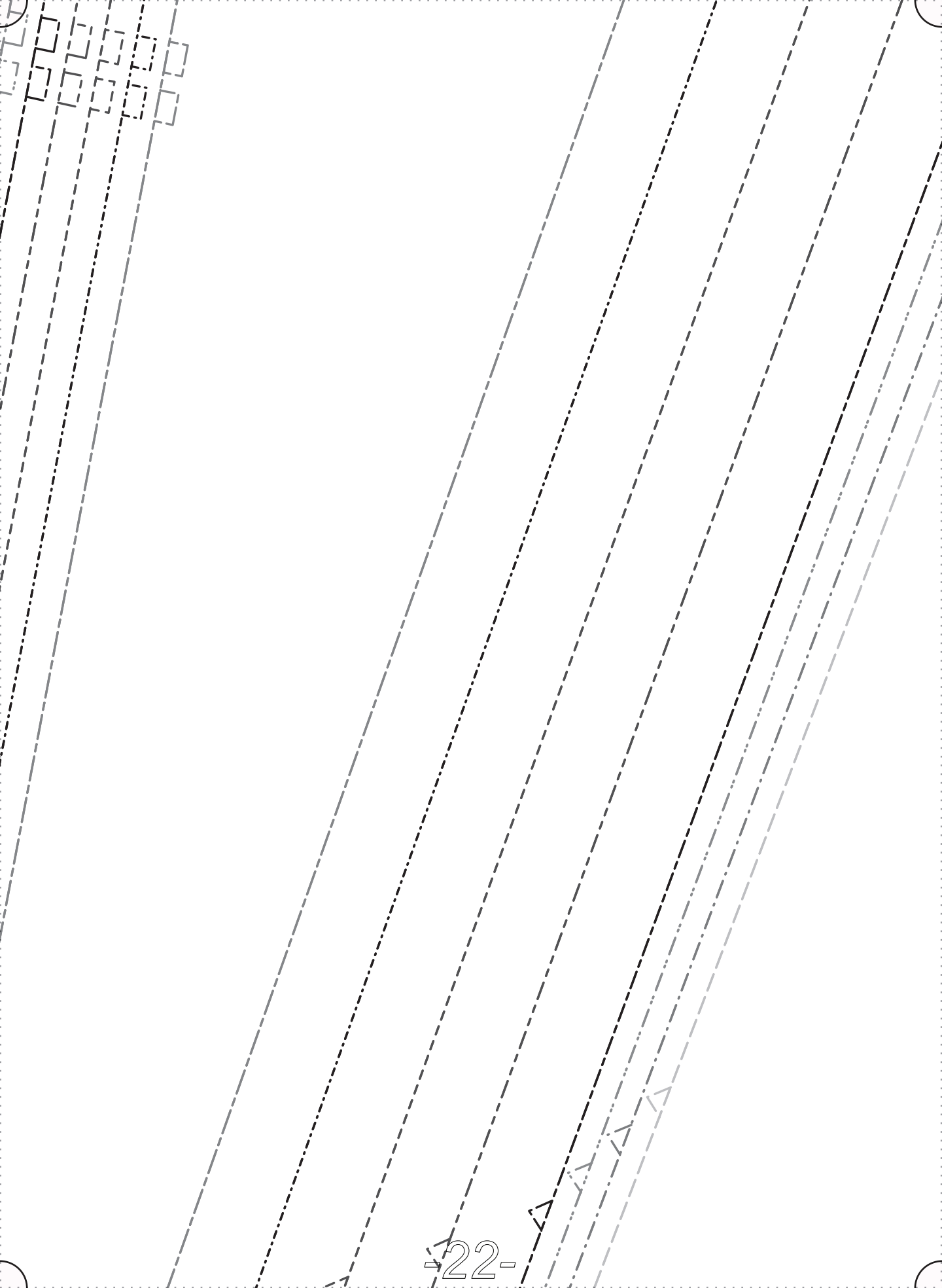
2 IN LINEN
E TO FACE”

LINE TYPES

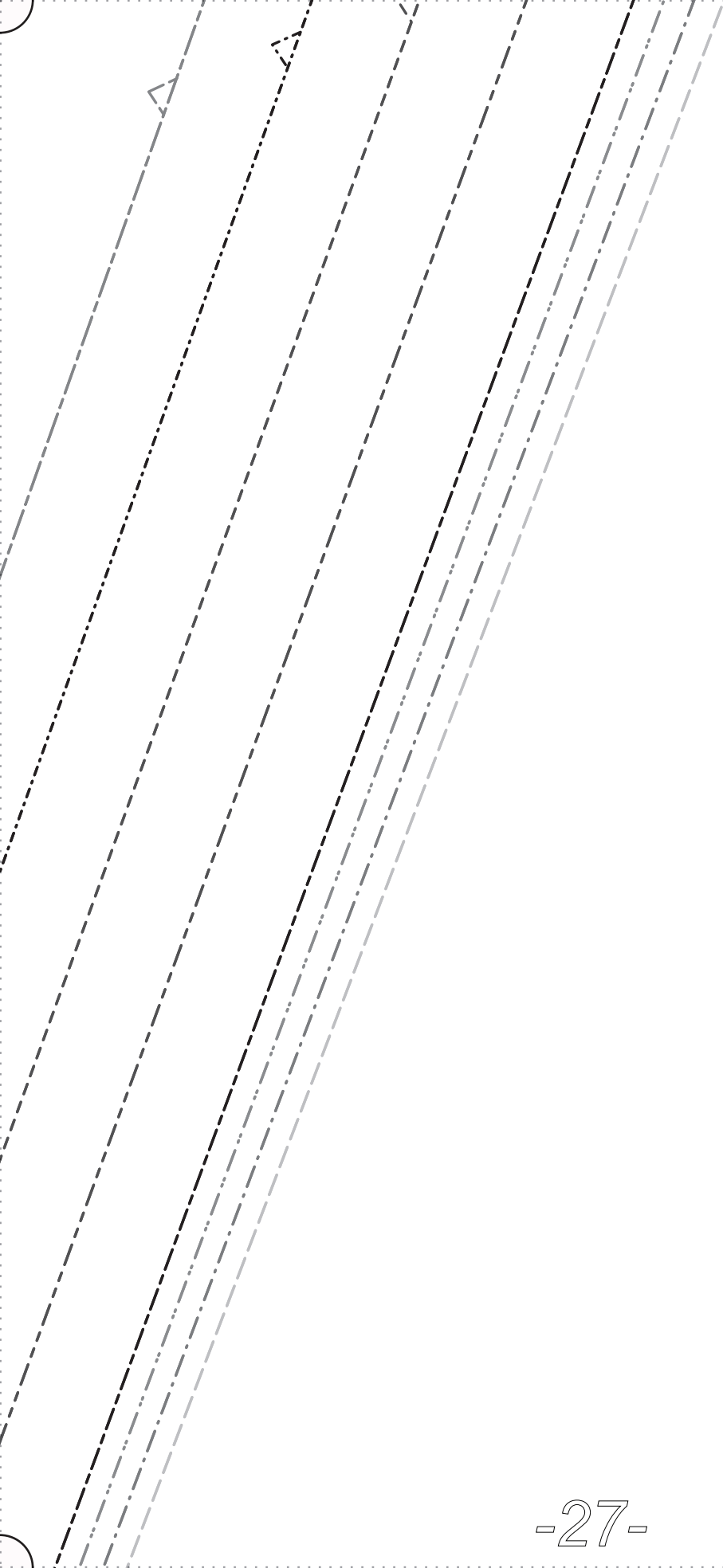
LINE TYPES



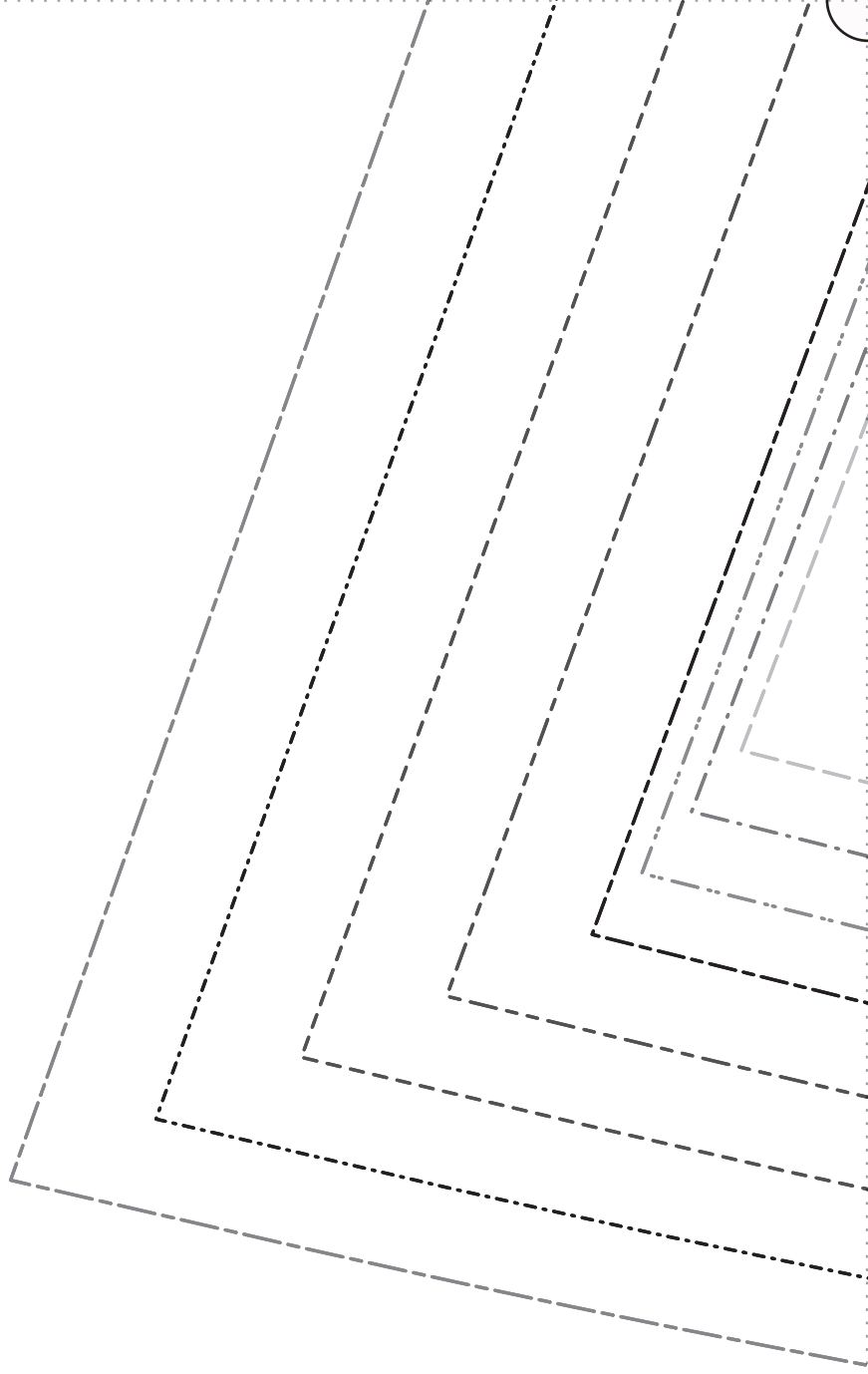


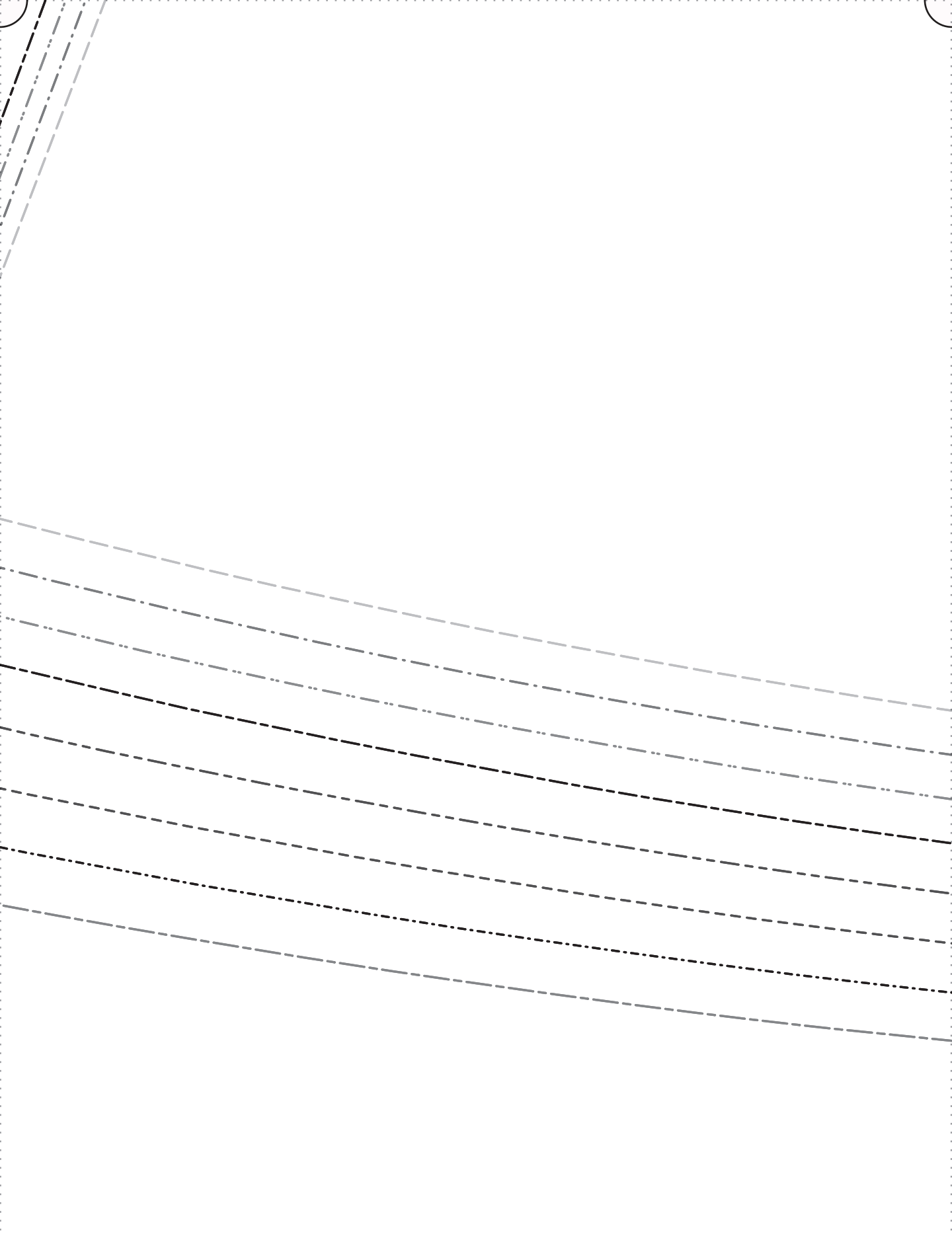


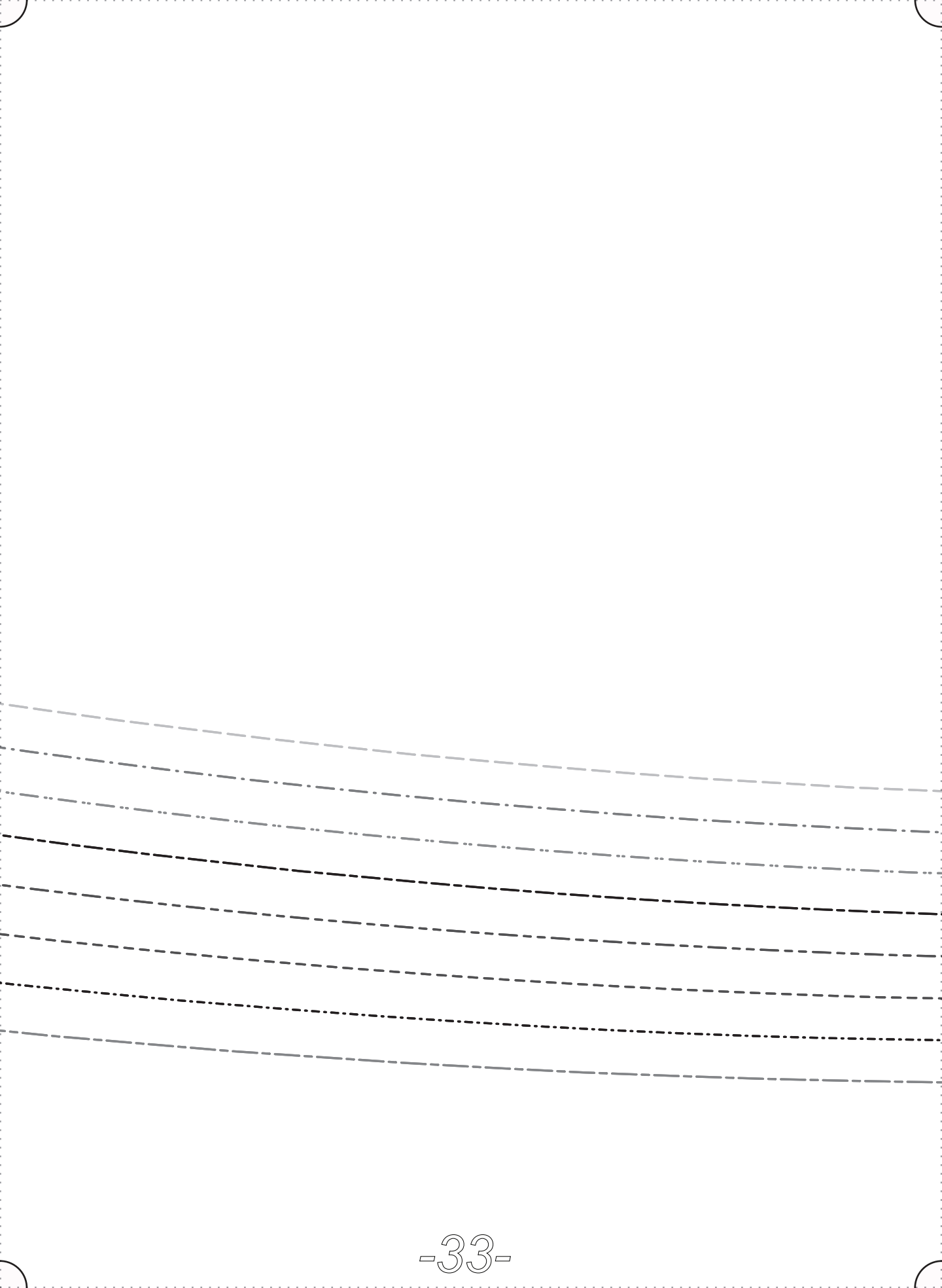
GRAINLINE



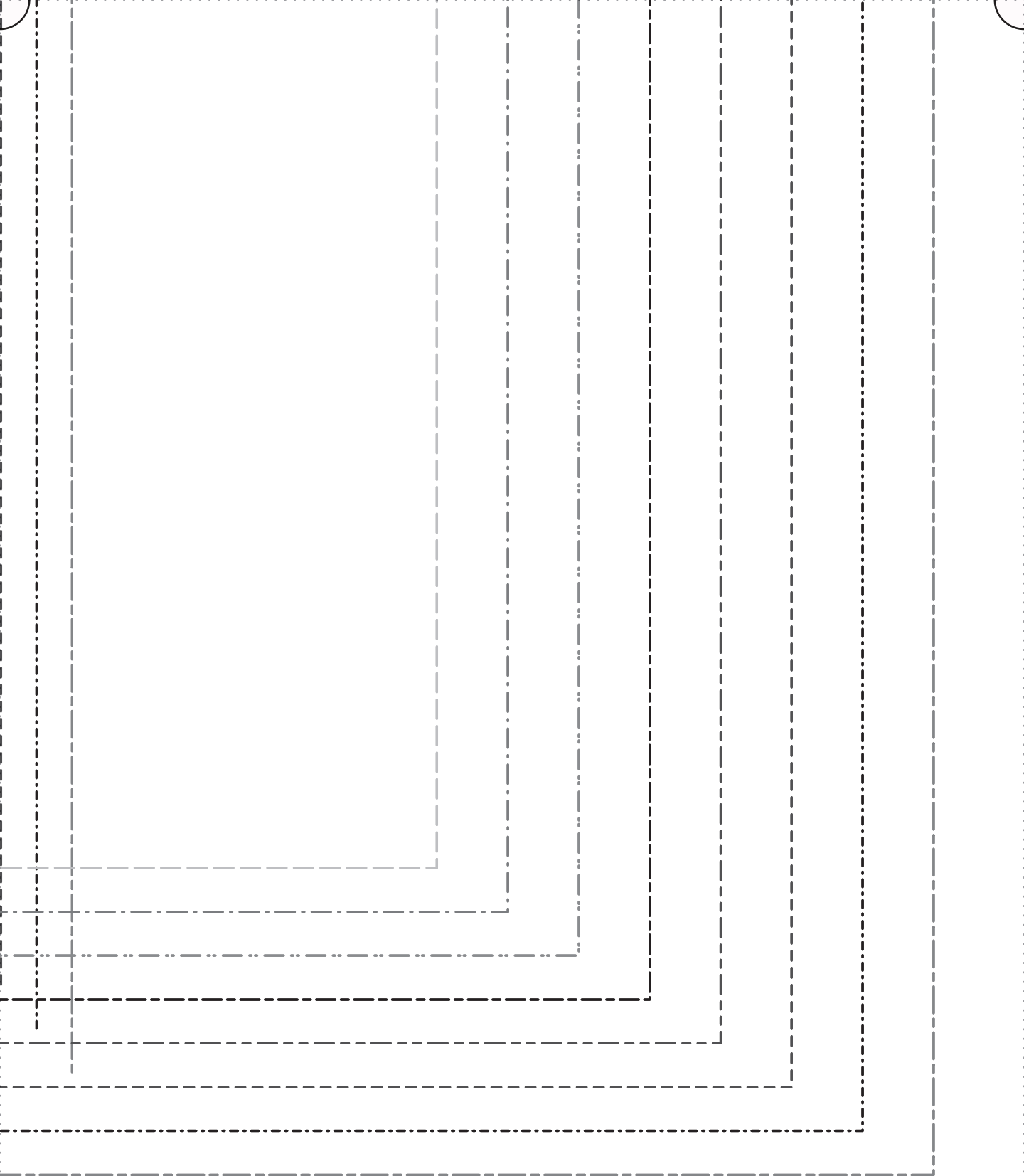








3/4"
HEM ALLOWANCES
INCLUDED



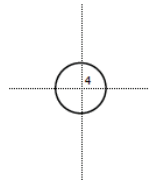
“Sofia” Sewing Pattern (Part 2)

2 Inch
Square to
Check Print
Accuracy

PRINT ONLY THIS PAGE FIRST TO CHECK SCALE

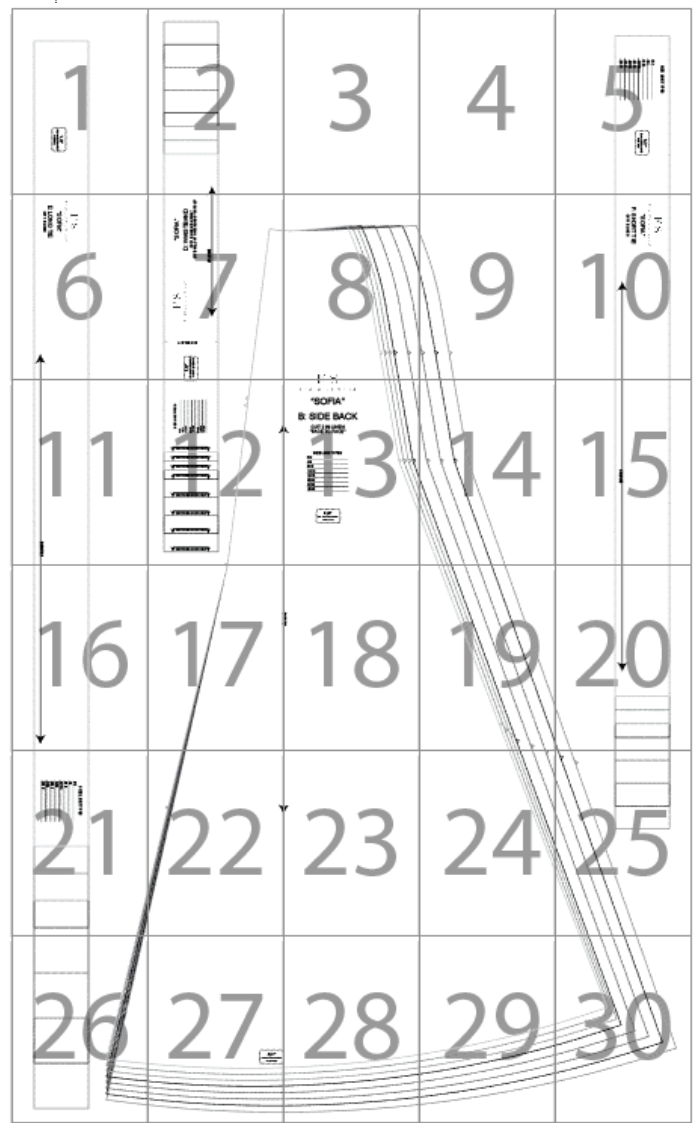
IMPORTANT! PRINT AT ACTUAL SIZE, 100%, OR NO SCALING.

Formatted for paper sizes A4 and Letter.



Simply overlap the page margins and align the markings in each corner to complete the circle and tape in place. If desired, trim right & bottom margins.

Layered PDF:
This pattern has embedded layers so you can print all sizes or a single size. See your .pdf viewers 'Layers' menu.



SEAM ALLOWANCES
FOR TIES
1/2"

SIZE LINE TYPES

- 0/2 _____
- 4/6 _____
- 8/10 _____
- 12/14 _____
- 16/18 _____
- 20/22 _____
- 24/26 _____
- 28/30 _____

SEAM ALLOWANCES
FOR TIES
1/2"

F|S

FABRICS-STORE.COM

“SOFIA”

E: LONG TIE

CUT 1 IN LINEN



F|S

FABRICS-STORE.COM

“SOFIA”

D: WAISTBAND

CUT 1 IN LINEN “ON FOLD”
OPTIONAL, CUT 1 INTERLINING “ON FOLD”

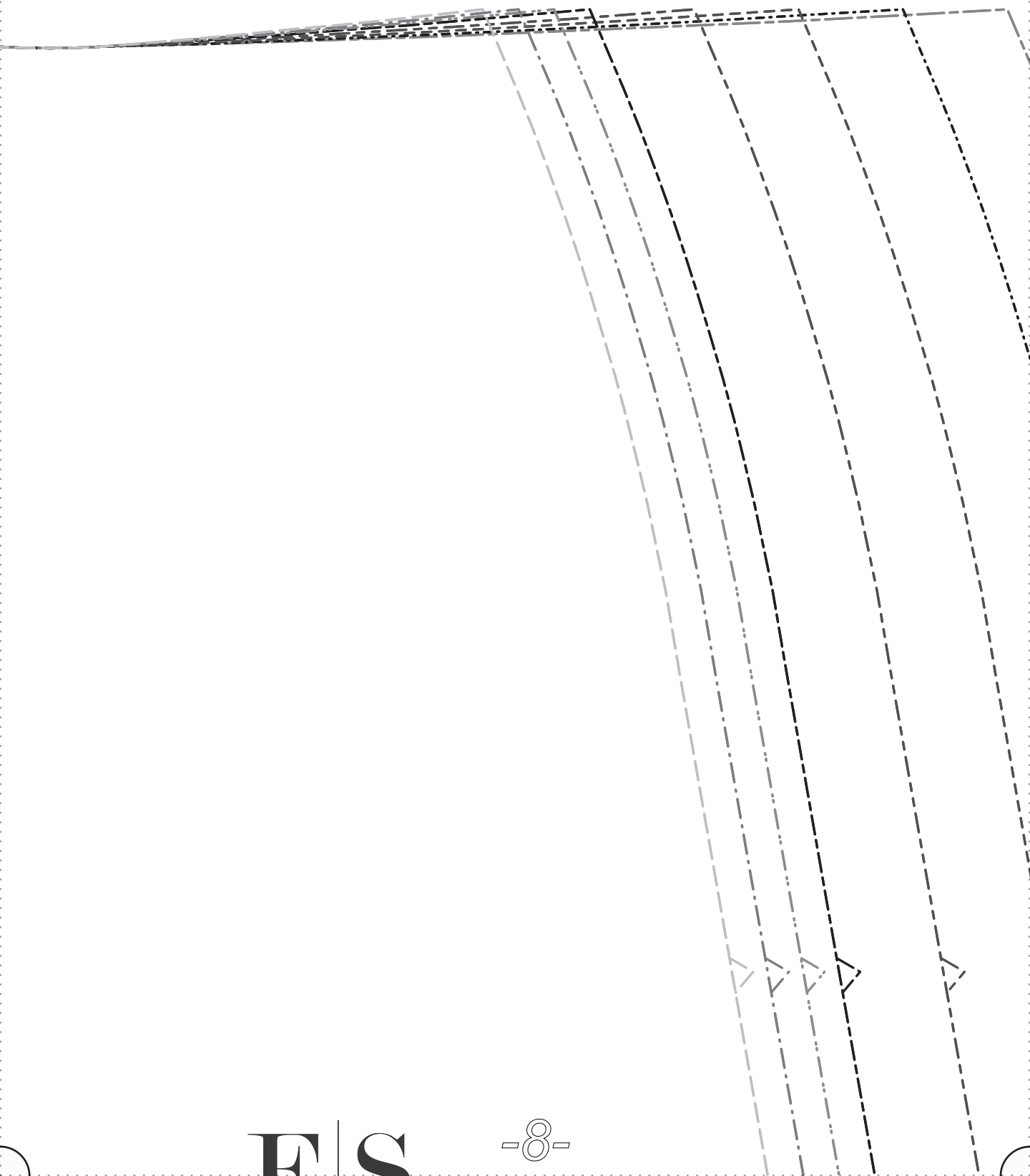
SIDE WAIST

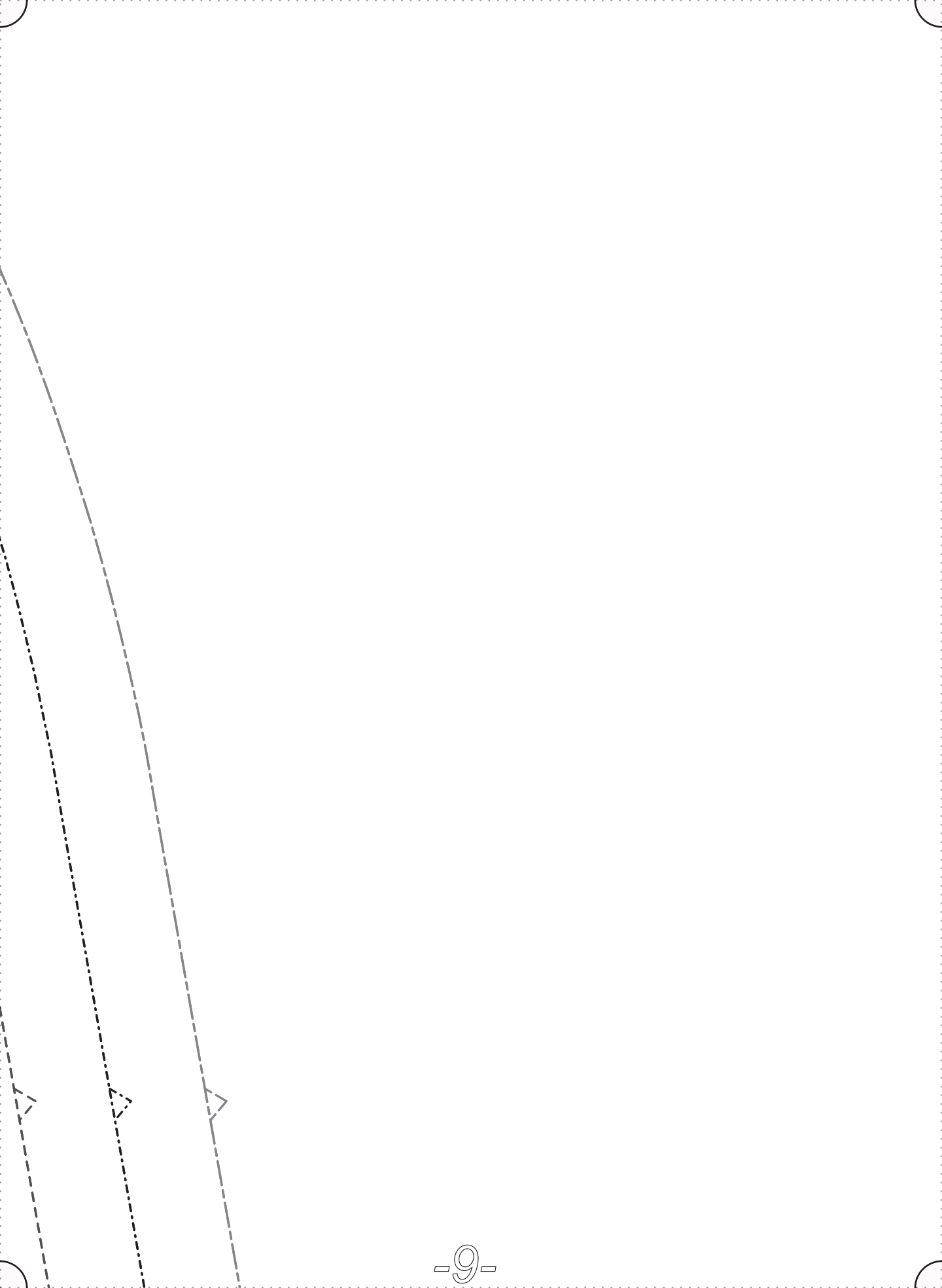
1/2"

SEAM ALLOWANCES
FOR WAISTBAND

GRAINLINE







F|S

FABRICS-STORE.COM

“SOFIA”

F: SHORT TIE

CUT 1 IN LINEN



GRAINLINE

SIZE LINE TYPES

0/2	-----
4/6	-----
8/10	-----
12/14	-----
16/18	-----
20/22	-----
24/26	-----
28/30	-----

CENTER BACK ON FOLD

CENTER BACK ON FOLD

CENTER BACK ON FOLD

CENTER BACK ON FOLD

CENTER BACK ON FOLD

CENTER BACK ON FOLD

CENTER BACK ON FOLD

CENTER BACK ON FOLD

“SOFIA”

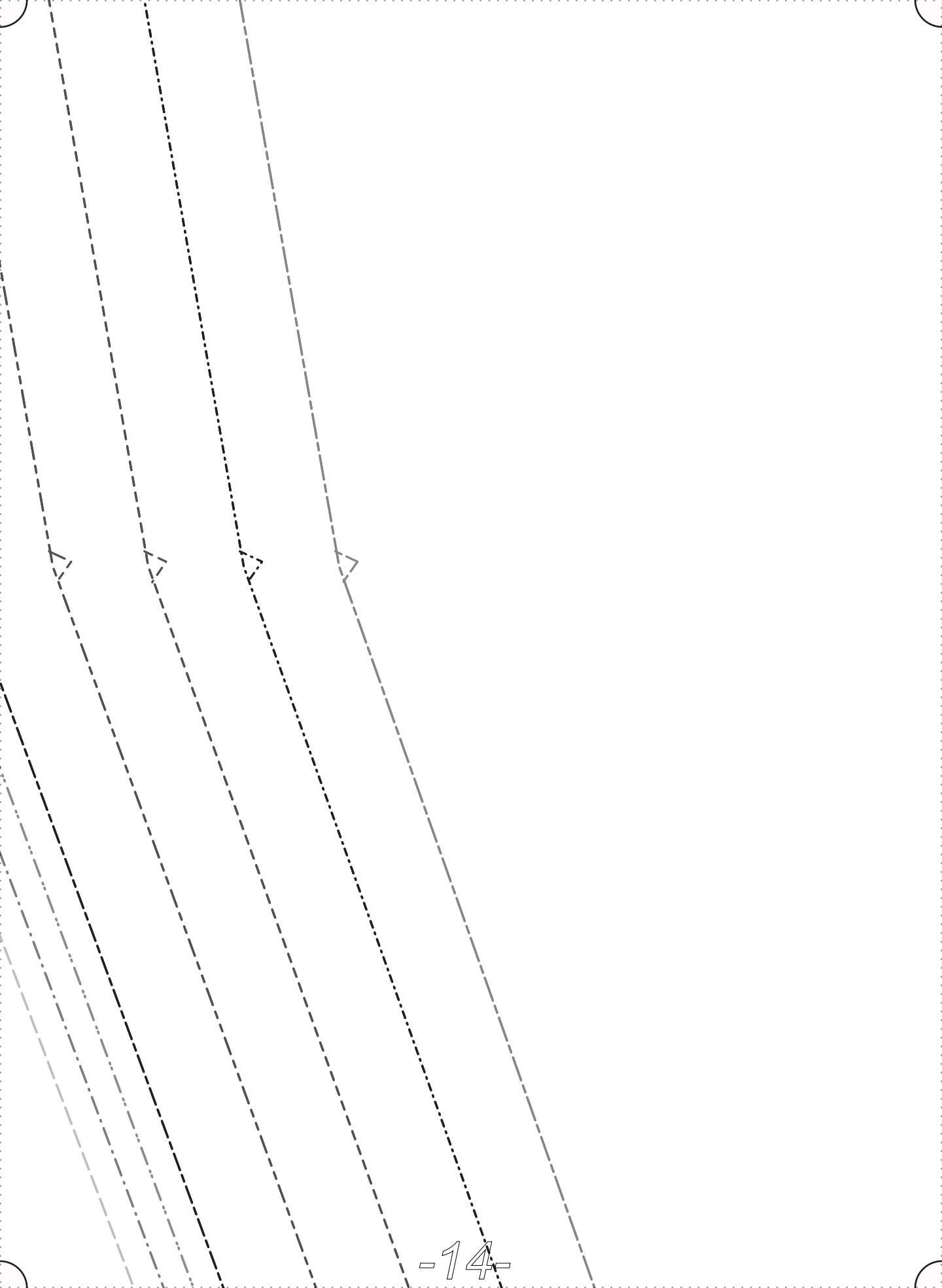
B: SIDE BACK

CUT 2 IN LINEN
“FACE TO FACE”

SIZE LINE TYPES

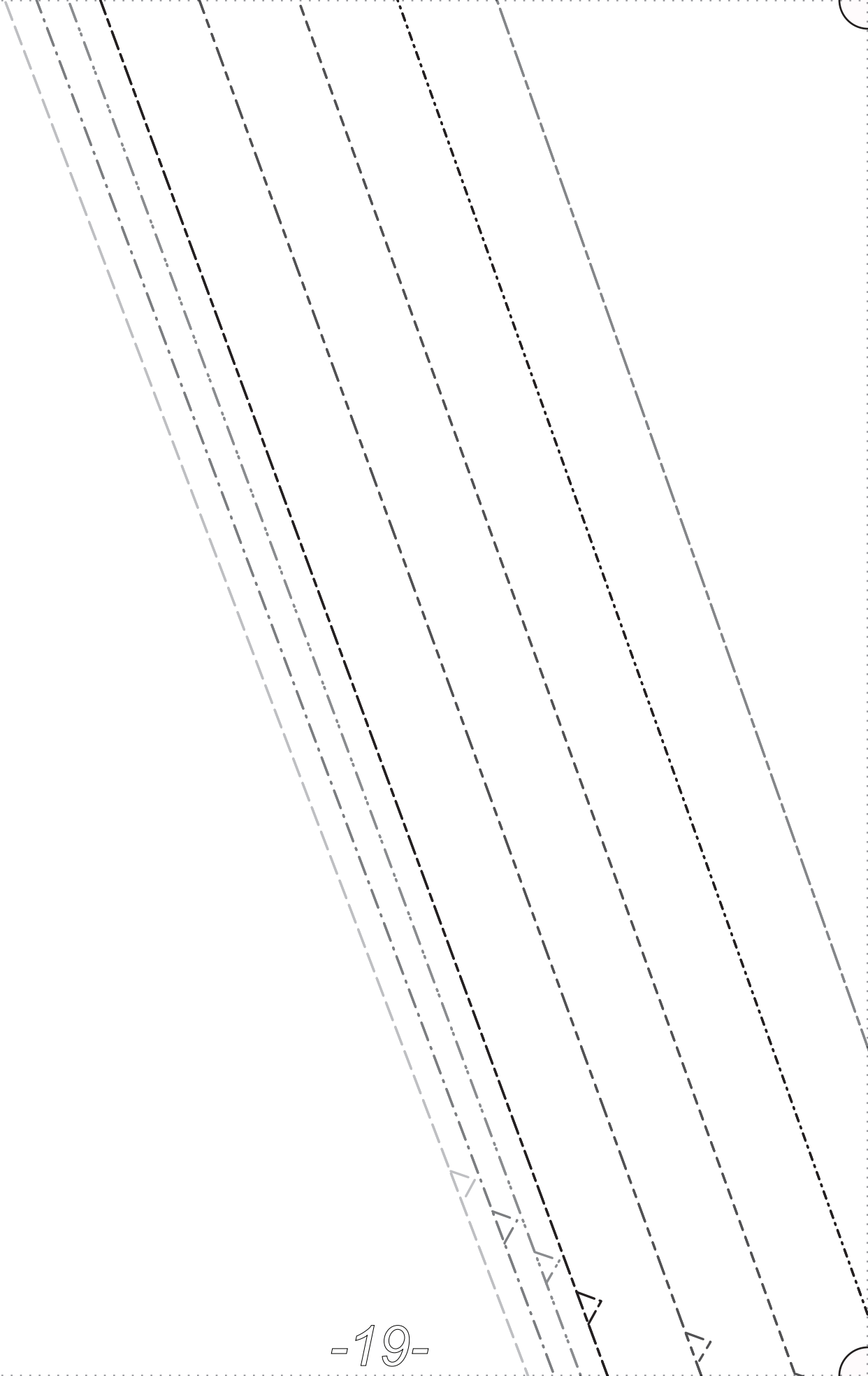
- 0/2 _____
- 4/6 _____
- 8/10 _____
- 12/14 _____
- 16/18 _____
- 20/22 _____
- 24/26 _____
- 28/30 _____

5/8"
SEAM ALLOWANCES
INCLUDED



GRAINLINE







Four horizontal dashed lines spanning the width of the page, serving as guides for handwriting practice.

SIZE LINE TYPES

0/2 _____

4/6 _____

8/10 _____

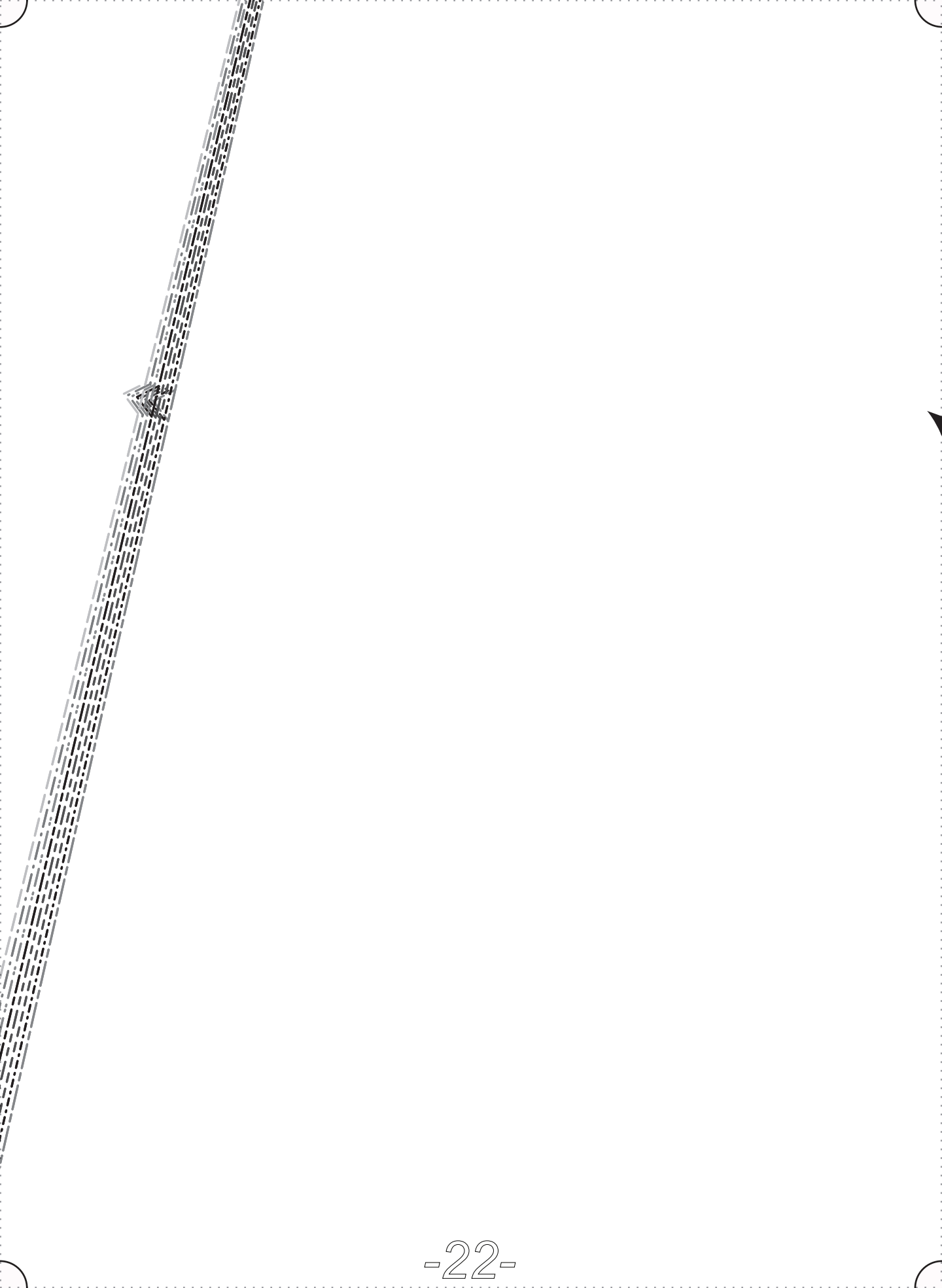
12/14 _____

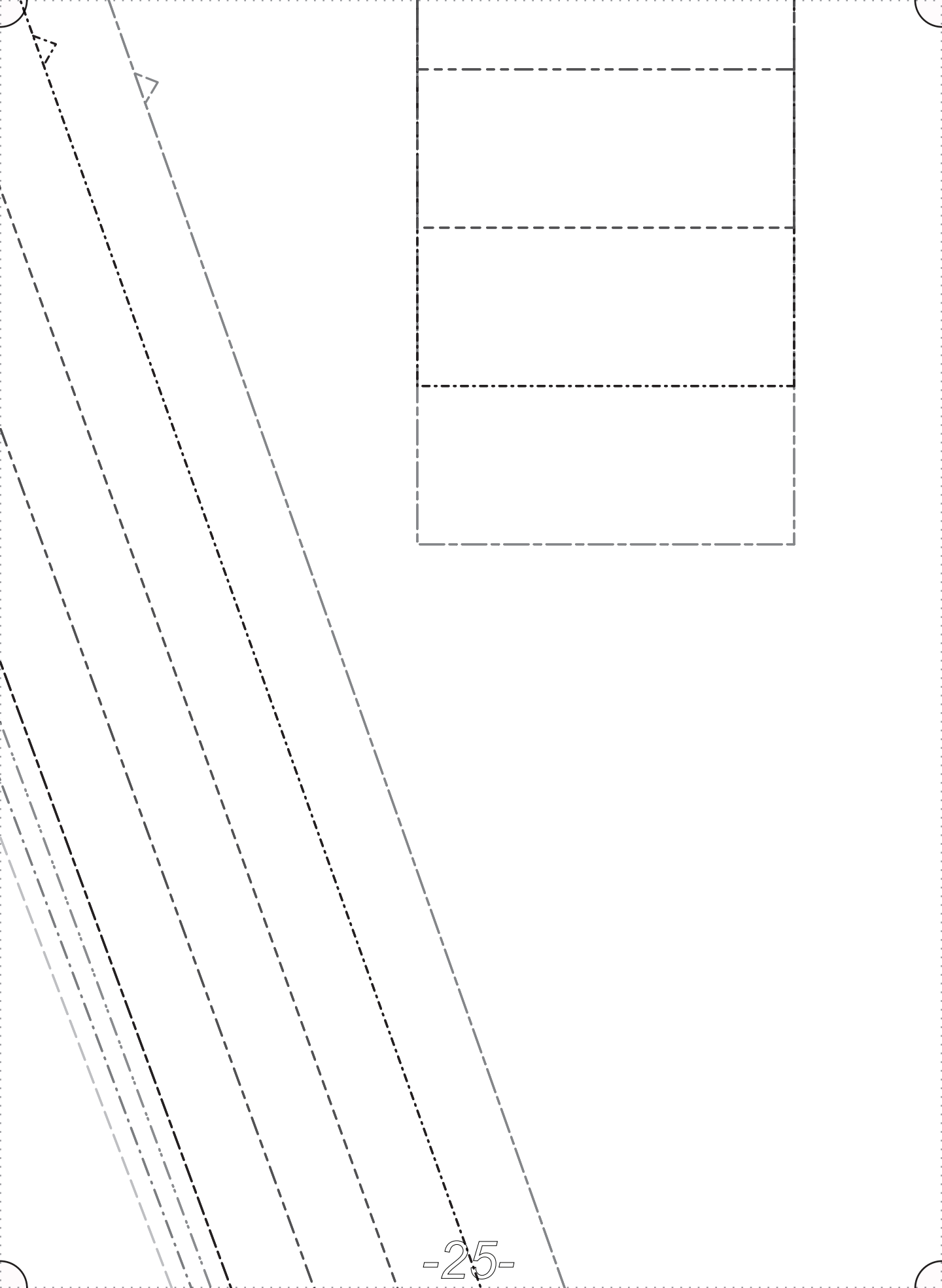
16/18 _____

20/22 _____

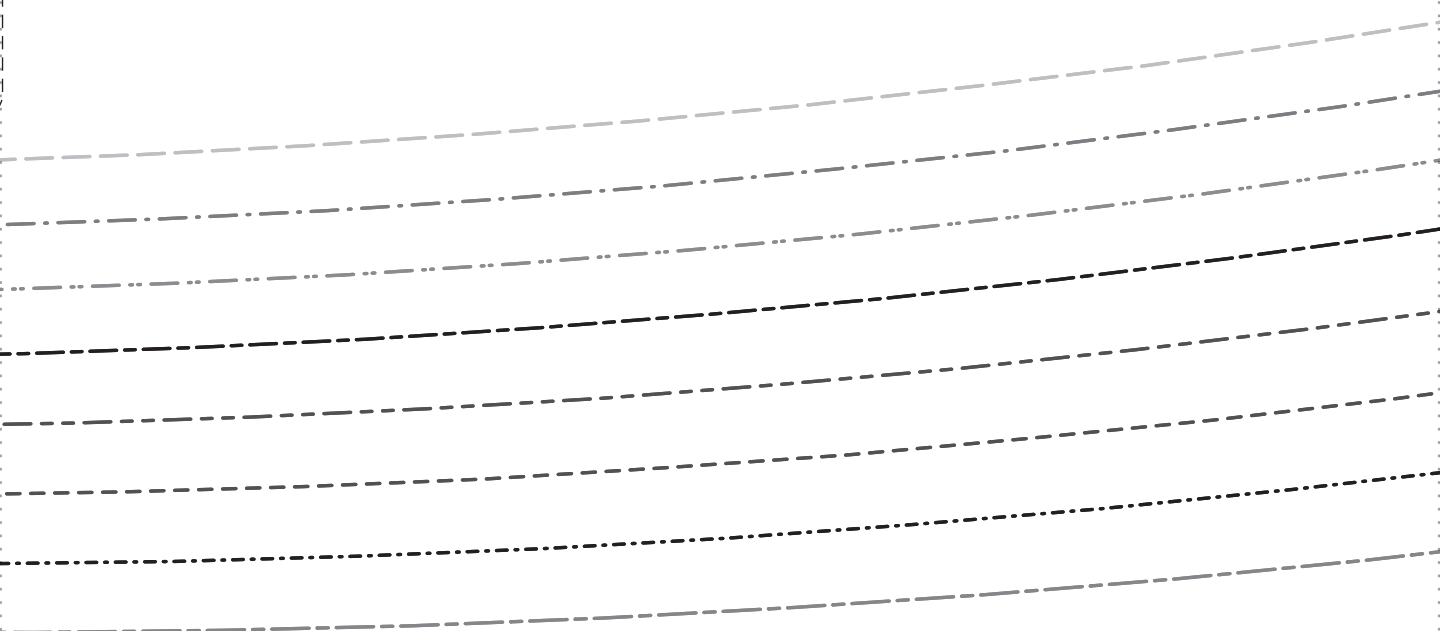
24/26 _____

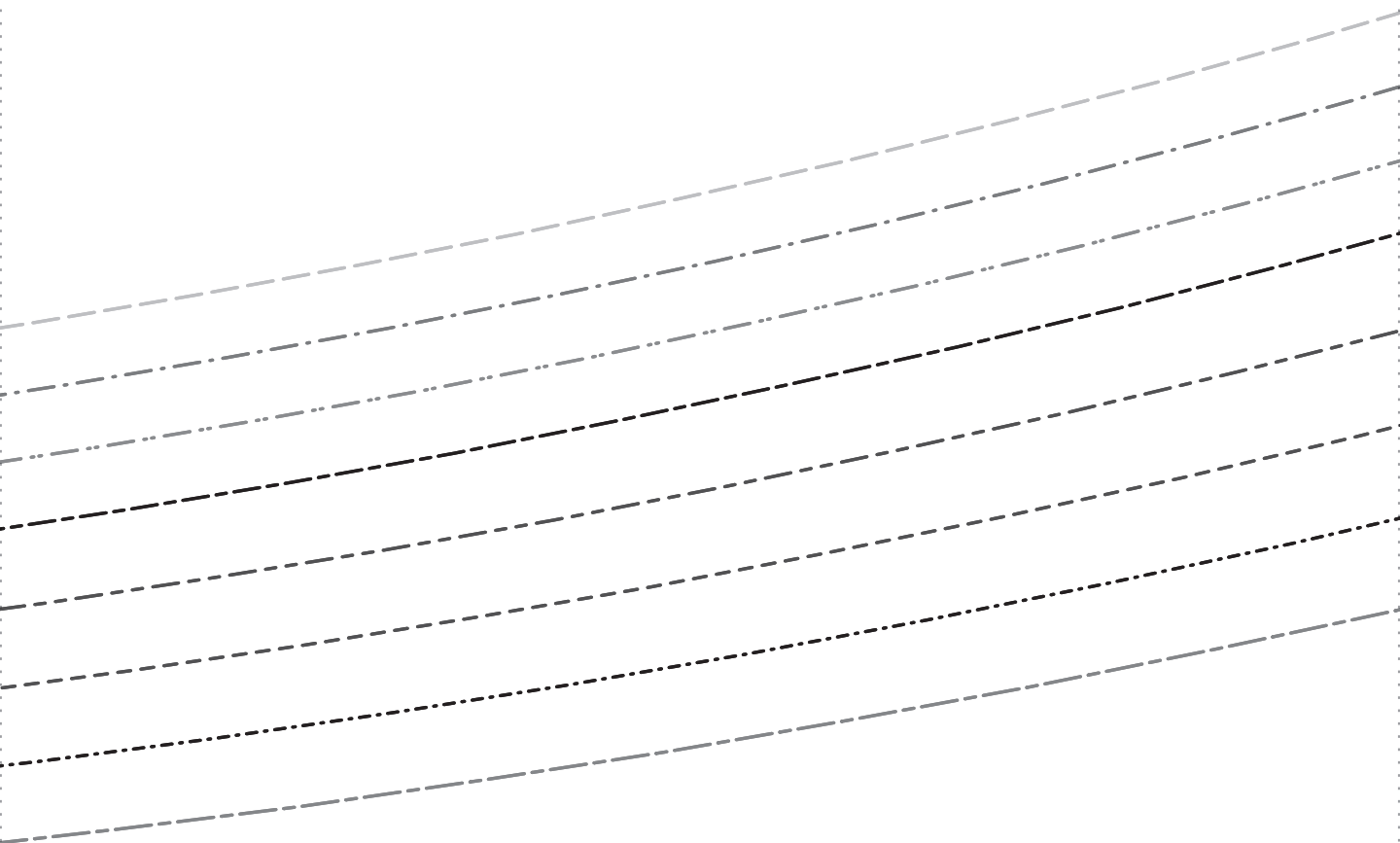
28/30 _____

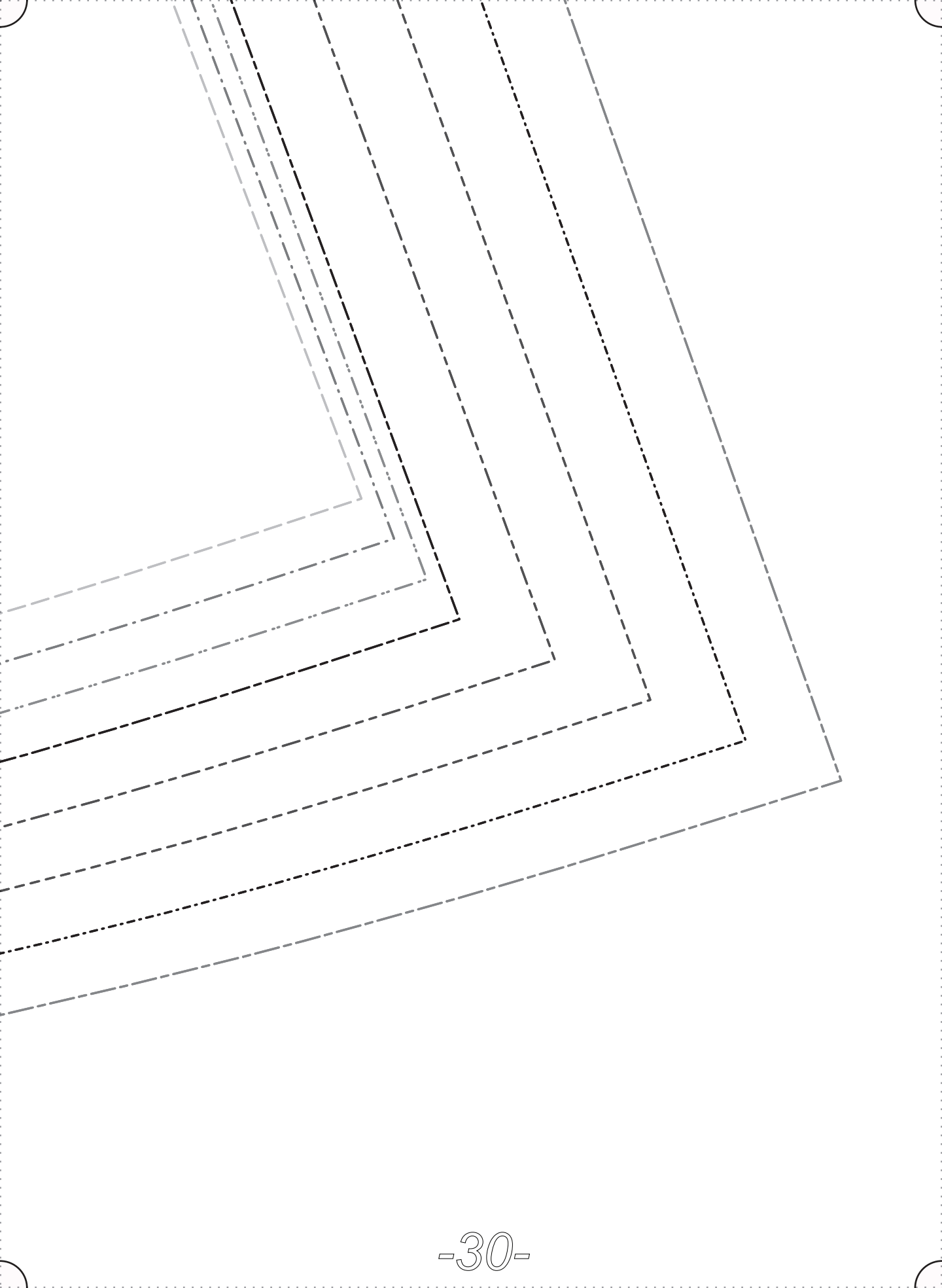




3/4"
HEM ALLOWANCES
INCLUDED







Thank you

We work hard on making our patterns beautiful enough to meet your standards.

If you feel like sharing praise or helpful criticism, please send us your comments to ask@fabrics-store.com.