

F|S

FABRICS-STORE.COM

Our linen is nothing short of addicting

NINA CARDIGAN



TIED IN STYLE

Generous and flowing, a pure linen summer cardigan is cozy yet polished for all your holiday adventures.

Misses and Women Sizes Included

866.620.2008 ASK@FABRICS-STORE.COM FABRICS-STORE.COM

NINA PATTERN

Nina is a loose and flowing short-sleeved cardigan with tie front detailing. Versatile styling to wear tied, cascading open, or even as a sarong tied around the waist. Linen is a natural favorite, soft and quick drying.

Sized for ladies 0/2 to 28/30

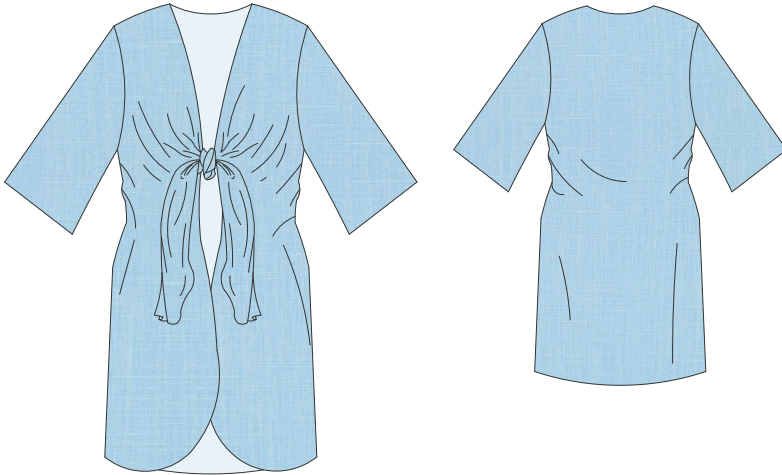
Simple instructions for the intermediate sewist.

PICTURED: LAURA WEARING IL020 3.5 OZ LINEN IN CERULEAN.



Our lovely model Laura is 5'10" and wearing size 4/6 of this pattern with no adjustments.

PATTERN DETAILS



NINA CARDIGAN

Sizes: 0/2 to 28/30

- Loose fitting
- Tie front closure
- Short, wide sleeves
- Simple hemmed edges

FABRICS & SUPPLIES

- Light or medium weight linen.
- We sampled Emily in our IL020 a lighter weight of 3.5 ounces this 100% linen is woven with finer threads to give it a smoother appearance.
- Matching all purpose thread

SIZING & YARDAGE

Misses/Women's Size Guide Based on Body Measurements in Inches

Size	0/2	4/6	8/10	12/14	16/18	20/22	24/26	28/30
Bust	33-34	35-36	37-38	39-40	42-44	46-48	50-52	54-56
Waist	25-26	27-28	29-30	31-32	34-36	38-40	42-44	46-48
Hip	35-36	37-38	39-40	41-42	44-46	48-50	52-54	56-58

Finished Garment Measurements - Approximate in Inches

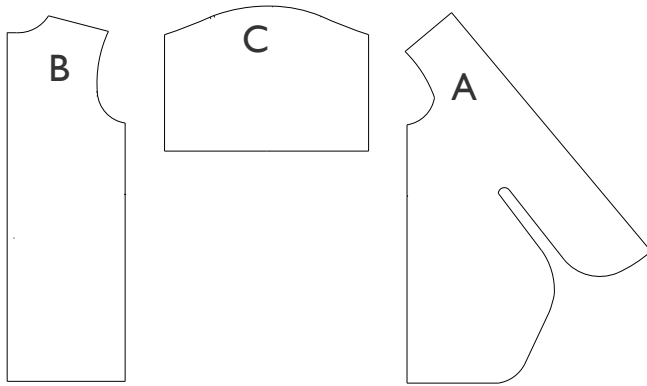
Size	0/2	4/6	8/10	12/14	16/18	20/22	24/26	28/30
Bust	35	37	39	41	45	49	53	57
Waist (high)	26.5	28.5	30.5	32.5	36.5	40.5	44.5	48.5
Hips	42	44	46	48	52	56	60	64
Dress Length	35	35 1/4	35 5/9	35 7/8	36 1/3	36 3/4	37 1/6	37 3/5
Sleeve Inseam	17 3/8	17 7/8	18 3/8	18 7/8	19 3/8	19 7/8	20 3/8	20 7/8

Estimated Yardage - 54" Width Linen - Shrinkage Has Been Calculated

3 yards all sizes

PATTERN & CUTTING GUIDES

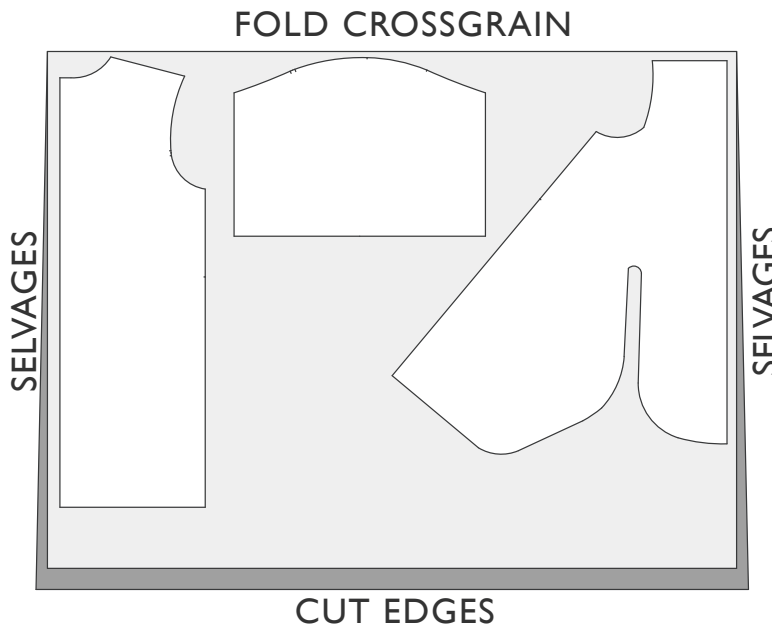
PATTERN PIECE REFERENCE



- A: FRONT
CUT 2 IN LINEN "FACE TO FACE"
- B: BACK
CUT 2 IN LINEN "FACE TO FACE"
- C: SLEEVE
CUT 2 IN LINEN "FACE TO FACE"

CUTTING LAYOUT EXAMPLES

RIGHT SIDE OF PATTERN	BACK SIDE OF PATTERN	RIGHT SIDE OF FABRIC	WRONG SIDE OF FABRIC



Layout example size 4/6.

SEWING & PREPARATION TIPS:

Sewing with quality linen from Fabrics-Store is very enjoyable! Linen is a stable fabric that does not easily shift or slip, which is a very helpful characteristic for sewing a neat and even seam with little effort. You do not need to “push” or “pull” the fabric while sewing... just simply guide it.

Pre-washing: You will want to prewash and dry your linen fabric in the same manner you would your finished garment. This will soften your fabric, and eliminate further shrinkage in your final garment.

If you plan on only dry cleaning your final garment, likewise you will want to dry clean the fabric before cutting and sewing. Secure the raw edges with a zig-zag or serger stitch before washing to avoid fraying. You may also sew the two raw edges together to form a continuous piece to avoid twisting in the wash. Remove fabric from dryer while it is still slightly moist. Press any deep creases or wrinkles using your iron’s steam setting with high heat, using a protective press cloth if needed to avoid scorching.

Fine Seaming: To ensure that your seaming will last as long as your linen garment, we encourage “single-needle” tailoring and French seaming. Once you think of French seams as simply sewing the seam twice to encase the raw edges, you will see that it does not take that much more time than the second step of using a serger. Setting the stitch length on your sewing machine to 2mm (about 12-14 stitches per inch) makes for a very durable seam, and is also an attractive indication of fine tailoring.

Alternate Seaming: If you instead prefer to stitch your seams regularly and serge the raw edges, simply sew the seams with the full 5/8” allowance. You can then serge the raw edges, allowing the machine to trim 1/8” off the edges. This will result in seam allowances finishing at 1/2”.

Pressing: For best results, it is highly recommended that you press your seams as you finish sewing each of them. Pressing with a steam iron (and press cloth if needed) will help “set” the stitches into the fabric. You will find it is much easier to press your seams “as you go” instead of trying to press them all after the garment is finished.

Sewing Glossary: If certain sewing terms and techniques are new to you, please refer to the sewing glossary at the end of this document.

SEWING INSTRUCTIONS:

1. Sew shoulders with French seams. Seam allowance is a total of 5/8". With wrong sides together, sew a 1/4" seam. Turn the fabric on the edge of the seam so right sides are together. Press neatly. Sew another seam 3/8" to encase the previous seam and raw edges. You may alternatively sew plain seams with serged or zig-zag edges to prevent fraying. Unless otherwise indicated, all seams are 5/8" allowances and intended for French seaming.
2. Sew the back and side seams. Press the finished seam neatly to the back.
3. Sew the inseams of the sleeves. Press the finished seam neatly to the front. By having the side seams pressed to the back and the sleeve inseams to the front, this will avoid bulk under the arms.
4. Attach the sleeves. A French seam still works very nicely in armholes.
5. Hemming: Staystitch a scant 1/4" around the front neckline and hems of the body and sleeves. Press under 1/4"
6. Turn the edges a second time, 1/4 to 3/8" and press. Topstitch.

Glossary:

Basting Stitch: A temporary hand or machine loose or long stitch to hold a seam in place before sewing the final permanent stitching.

Bias grain: In woven fabrics, this is the diagonal direction at 45 degrees to the grain and crossgrain. There are two bias directions in the cloth, perpendicular to each other.

Buttonhole: A slit in the fabric to fasten a button. The raw edges of the slit are finished with a machine or hand sewn zig-zag stitch.

Ease stitch: A row of stitching sewn just to the inside of a single layer of seam allowance. While stitching, coax the weave of the fabric with your finger or stylus to “compress” the fabric together. This creates a “gathering” effect without puckers. If desired, a second row of stitching can be done for more ease.

Edge stitch: A row of top stitching very close to a seamed edge or folded edge, usually about 1/16th of an inch.

Fabric- right side: The side of the fabric which will be the exposed, outside part of a garment.

Fabric- wrong side: The inside of the fabric which will be the unexposed side or inside of a garment.

French seam: A seam sewn in two steps to encase the raw edges of the fabric within itself, giving a clean finish. 1- Wrong sides together, sew 1/4” seam. 2- Turn right sides together, stitch 3/8” seam. Total 5/8” seam allowance.

Grainline- cross grain: The direction of fabric going from selvage edge to selvage edge. In woven fabric, these would also be known as the weft threads of the weave.

Grainline- on grain: The direction of fabric running parallel to the selvage edge of the cloth. This is also referred to as the “lengthwise grain”. In woven fabric, these would also be known as the “warp” threads of the weave.

Notch- outward: Markings on the pattern that indicate an outward triangular cut outside the seam allowance. Notch markings will be arranged to show where two seam edges join properly together. A single wedge will often indicate a front piece, and 2 to 3 wedges together can indicate back pieces.

Notch- snip: Markings on the pattern that indicate a small “snip” into the seam allowance. Notch marking will be arranged to show where two seam edges join properly together. A single notch will often indicate a front piece, and 2 to 3 notches together can indicate back pieces.

Glossary (continued):

Overlock machine: A specialized sewing machine designed to sew and cut along the raw edge of a fabric seam with a networked stitch to secure the edges from fraying. Also known as a "serger" machine.

Press cloth: A piece of cloth used to lay over a garment to protect it while ironing from burning or scorching. Usually made of cotton or linen or wool.

Raw edge: The cut edge of fabric. If not secured with stitching or a finishing, the raw edge of a fabric can fray or unravel.

Seam allowance: The distance from the cut edge of a pattern piece to the sewing line. Seam allowances can vary, so be sure to double check the indicated amounts on your pattern.

Stay stitch: A row of stitching on a single layer of the seam allowance edge to prevent stretching. You are neither pushing or pulling the fabric- just guiding. The row of stitching will be just to the inside of the permanent seam allowance width. For example, if the seam allowance is 5/8", your stay stitch will be 1/2" or a "scant" 5/8". You will want your permanent stitching to conceal the stay stitch.

Understitch: A row of stitching on a the seamed edge of facing. This prevents the facing from rolling out to the outside and keeps it neatly in place along the garment edge. The stitching will only go on the facing side, catching the seam allowance with it. The stitching will show on the facing, but not on the garment side.

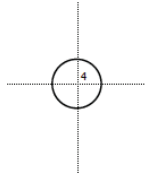
“Nina” Sewing Pattern

2 Inch
Square to
Check Print
Accuracy

PRINT ONLY THIS PAGE FIRST TO CHECK SCALE

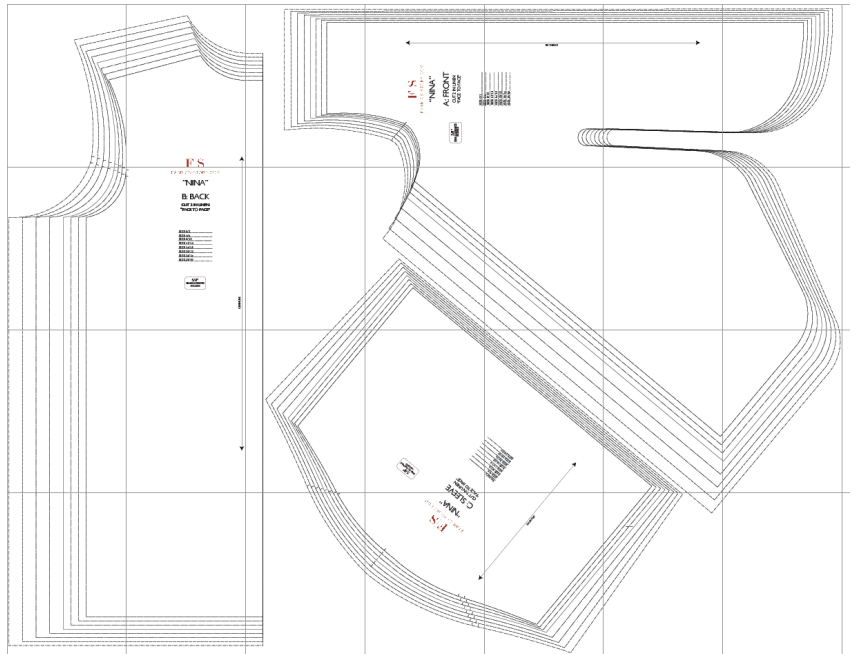
IMPORTANT! PRINT AT ACTUAL SIZE OR 100% SCALE

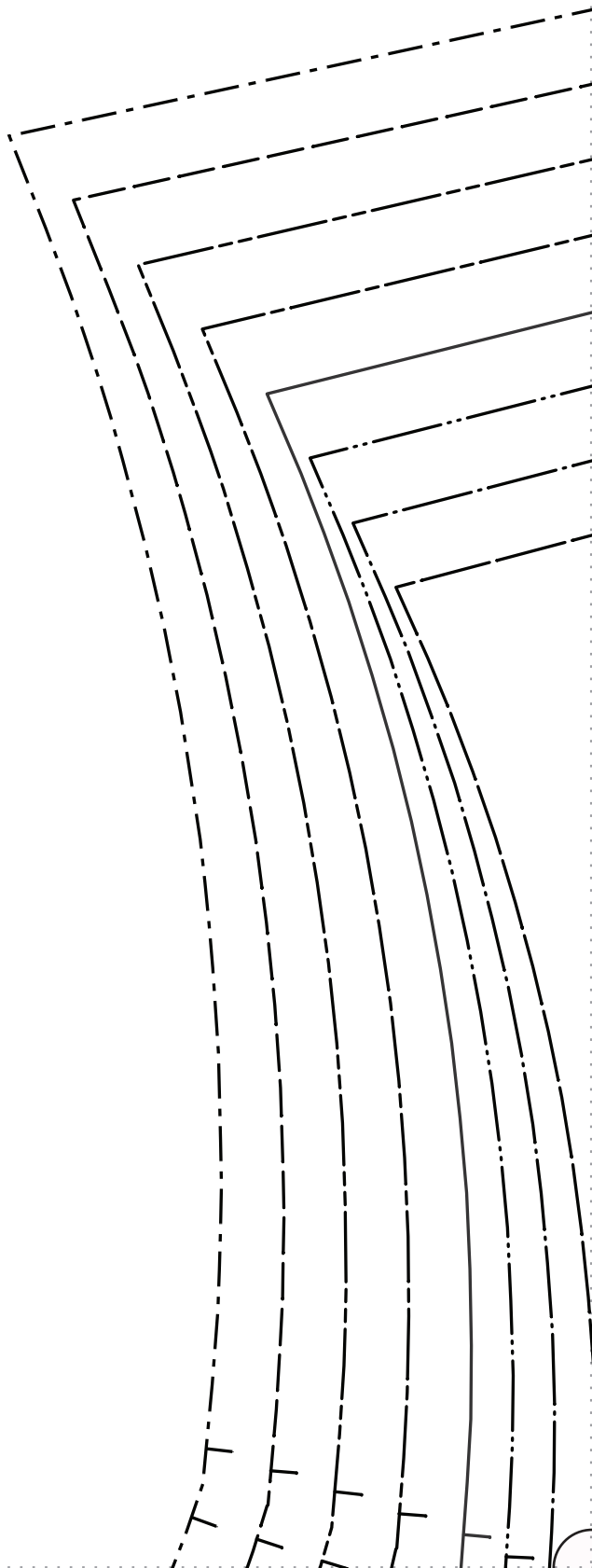
Formatted for paper sizes A4 and Letter.

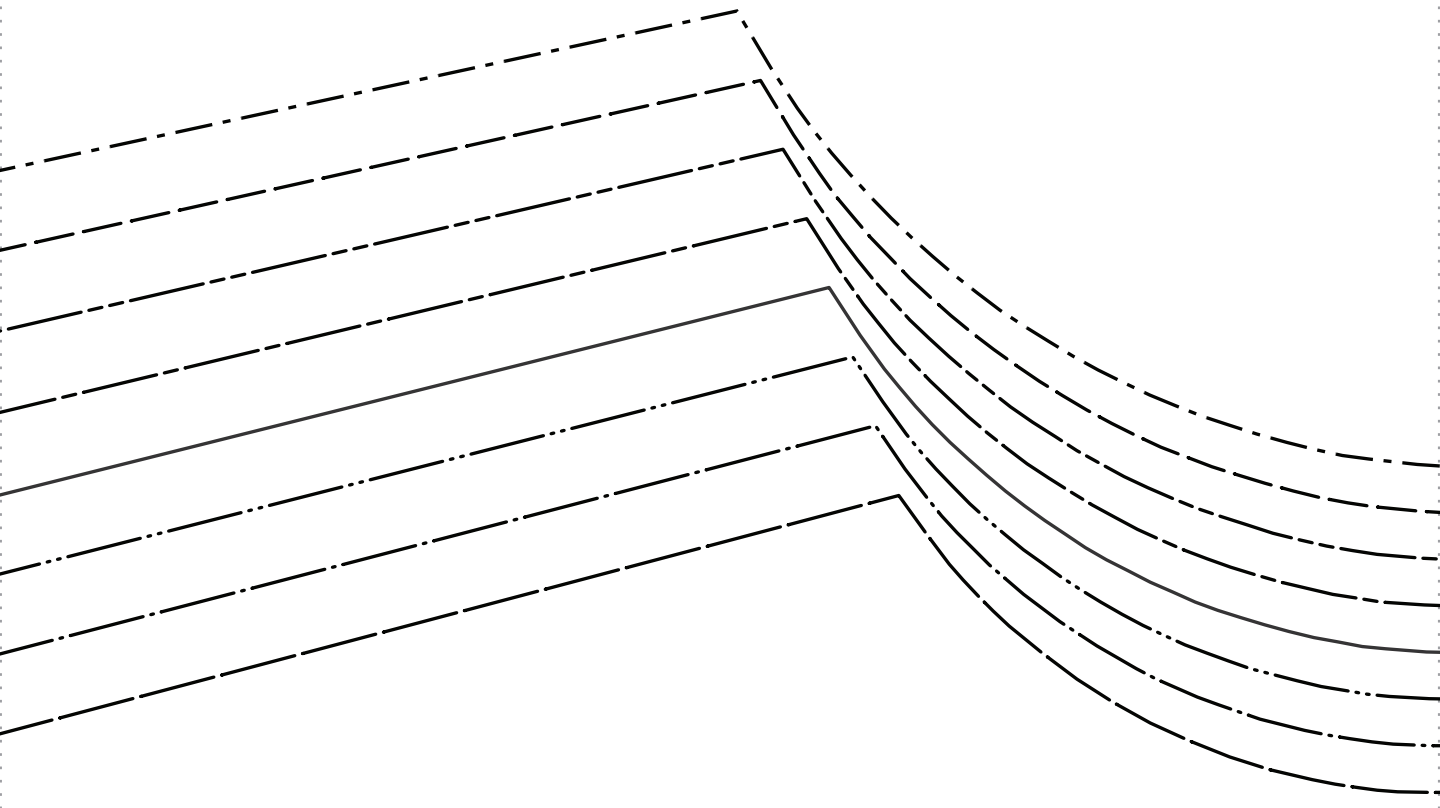


Simply overlap the page margins and align the markings in each corner to complete the circle and tape in place.

Layered PDF:
This pattern has embedded layers so you can print all sizes or a single size. See your .pdf viewers 'Layers' menu.

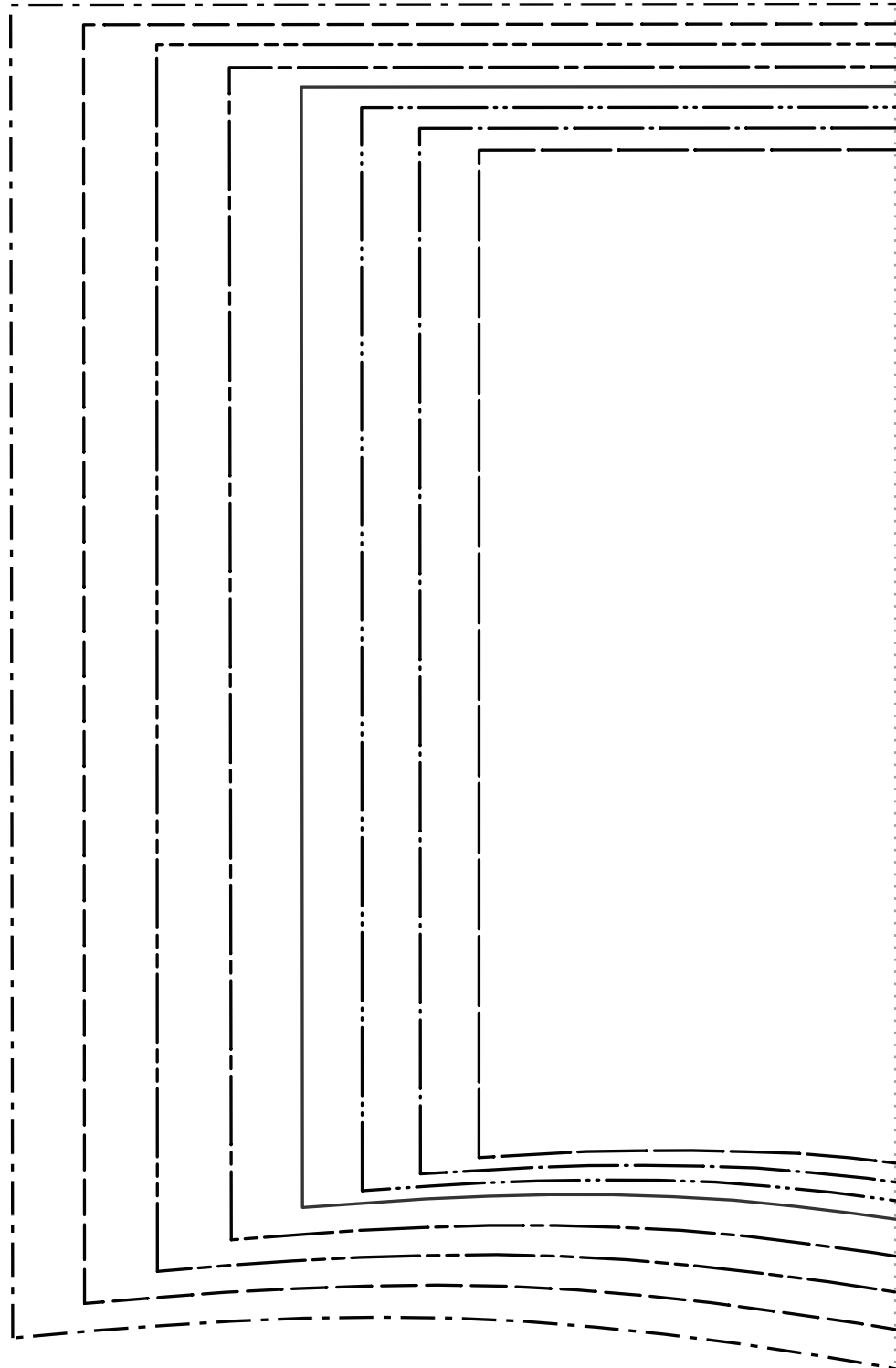
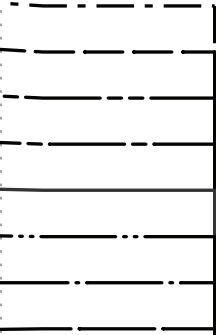






2F | S





The logo consists of the letters 'F' and 'S' in a serif font, separated by a vertical line.

FABRICS-STORE.COM

“NINA”

A: FRONT

CUT 2 IN LINEN
“FACE TO FACE”

5/8"
SEAM ALLOWANCES
INCLUDED

SIZE 0/2

4

SIZE 4/6

SIZE 8/10

SIZE 12/14

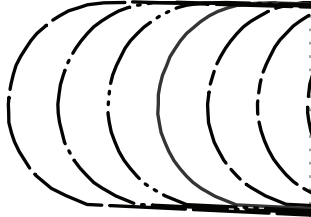
SIZE 16/18

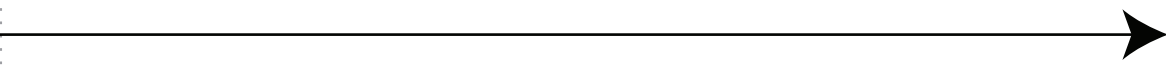
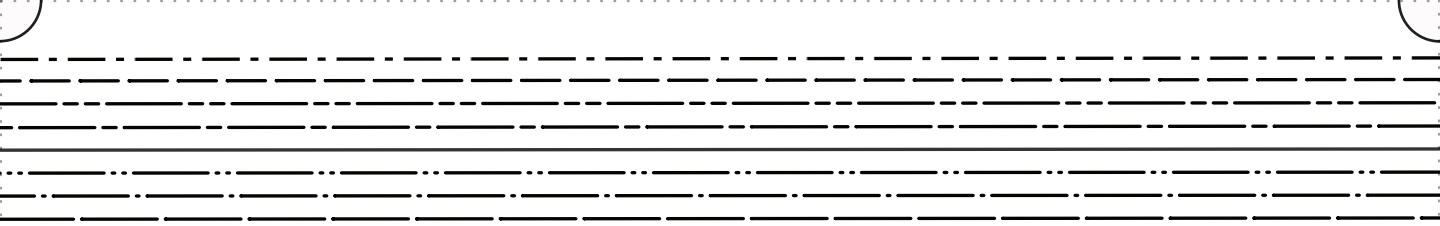
SIZE 20/22

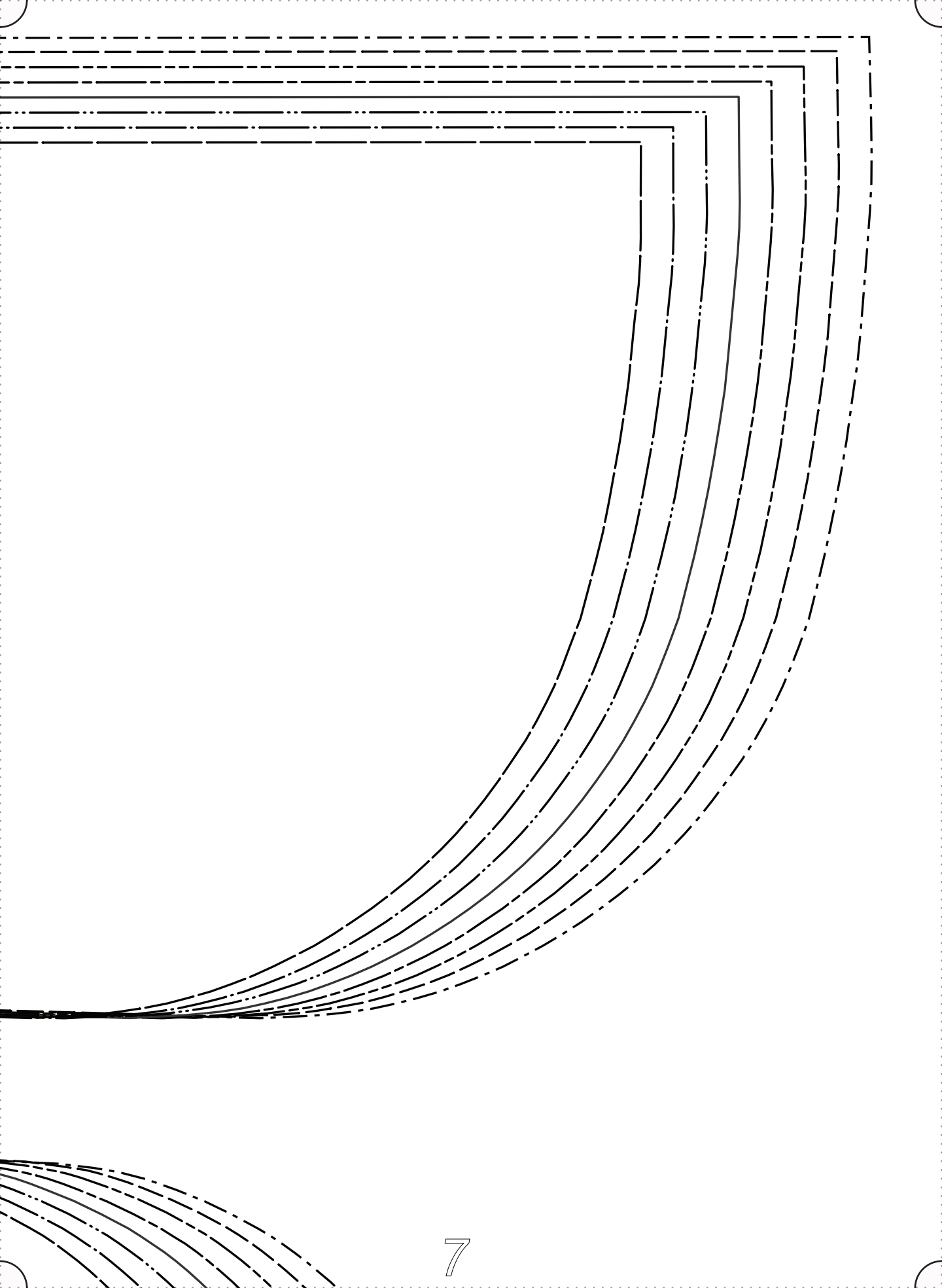
SIZE 24/26

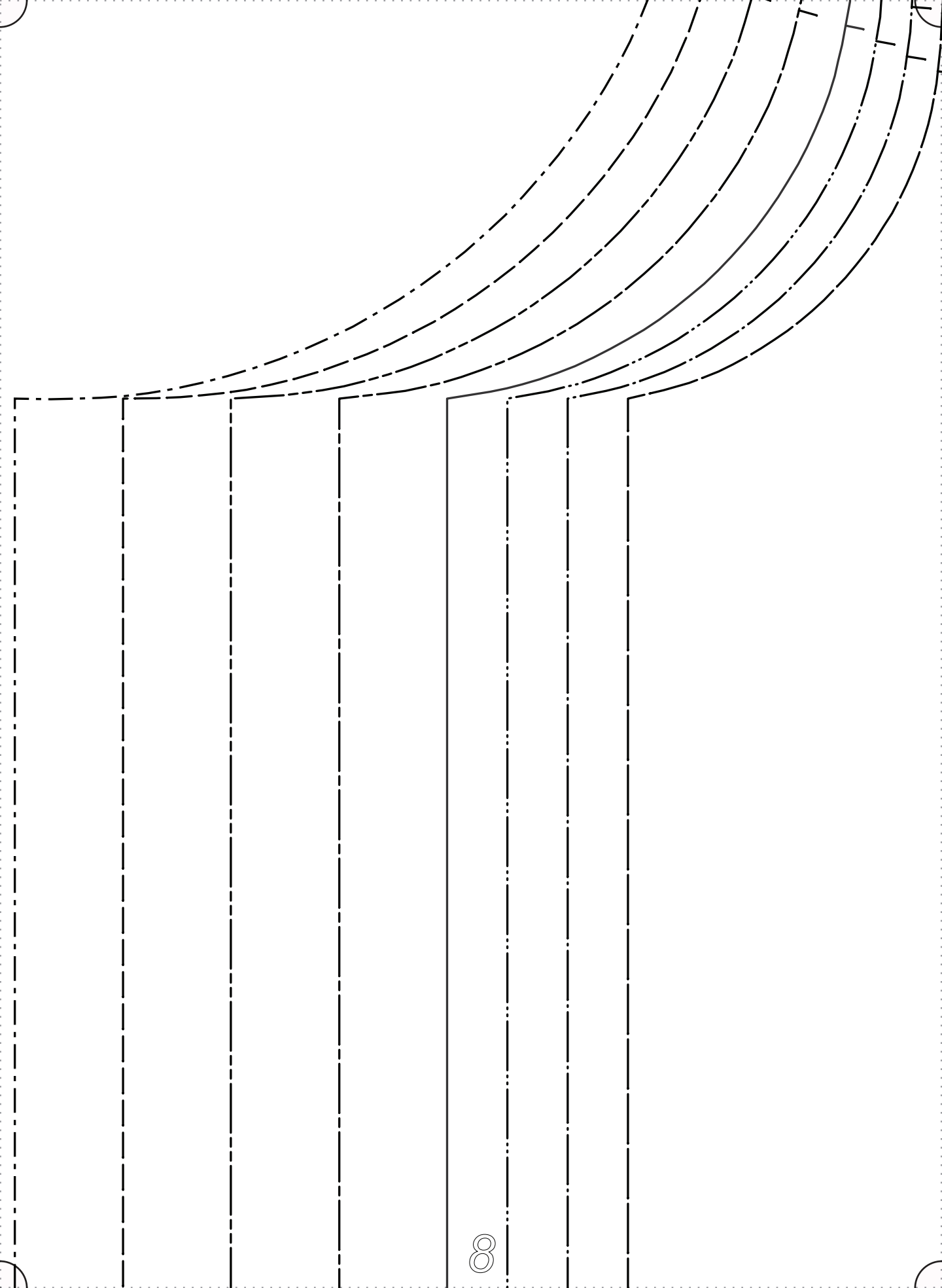
SIZE 28/30

GRAINLINE









“NINA”

B: BACK

CUT 2 IN LINEN
“FACE TO FACE”

SIZE 0/2 _____

SIZE 4/6

SIZE 8/10

SIZE 12/14 _____

SIZE 16/18 _____

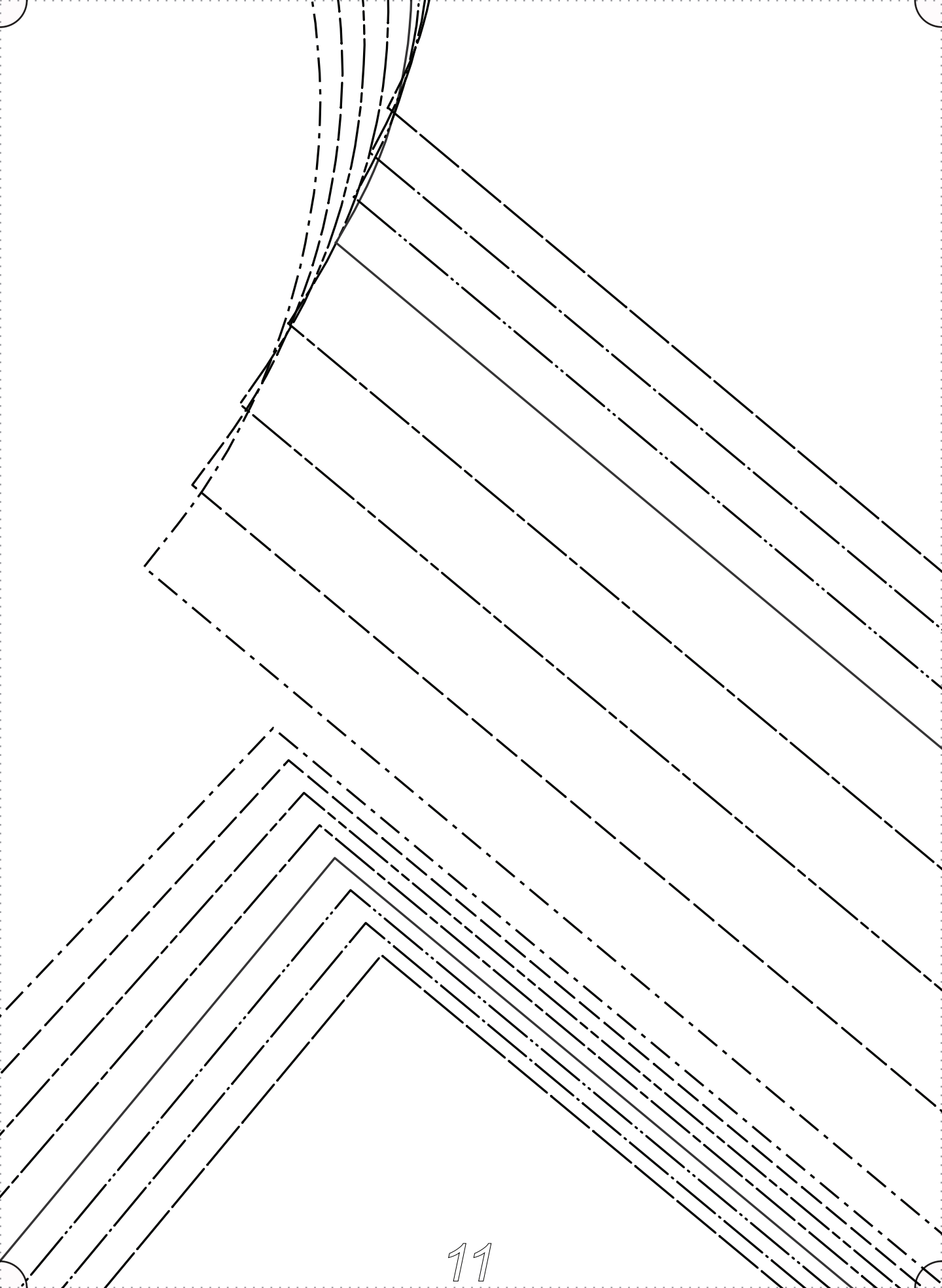
SIZE 20/22 _____

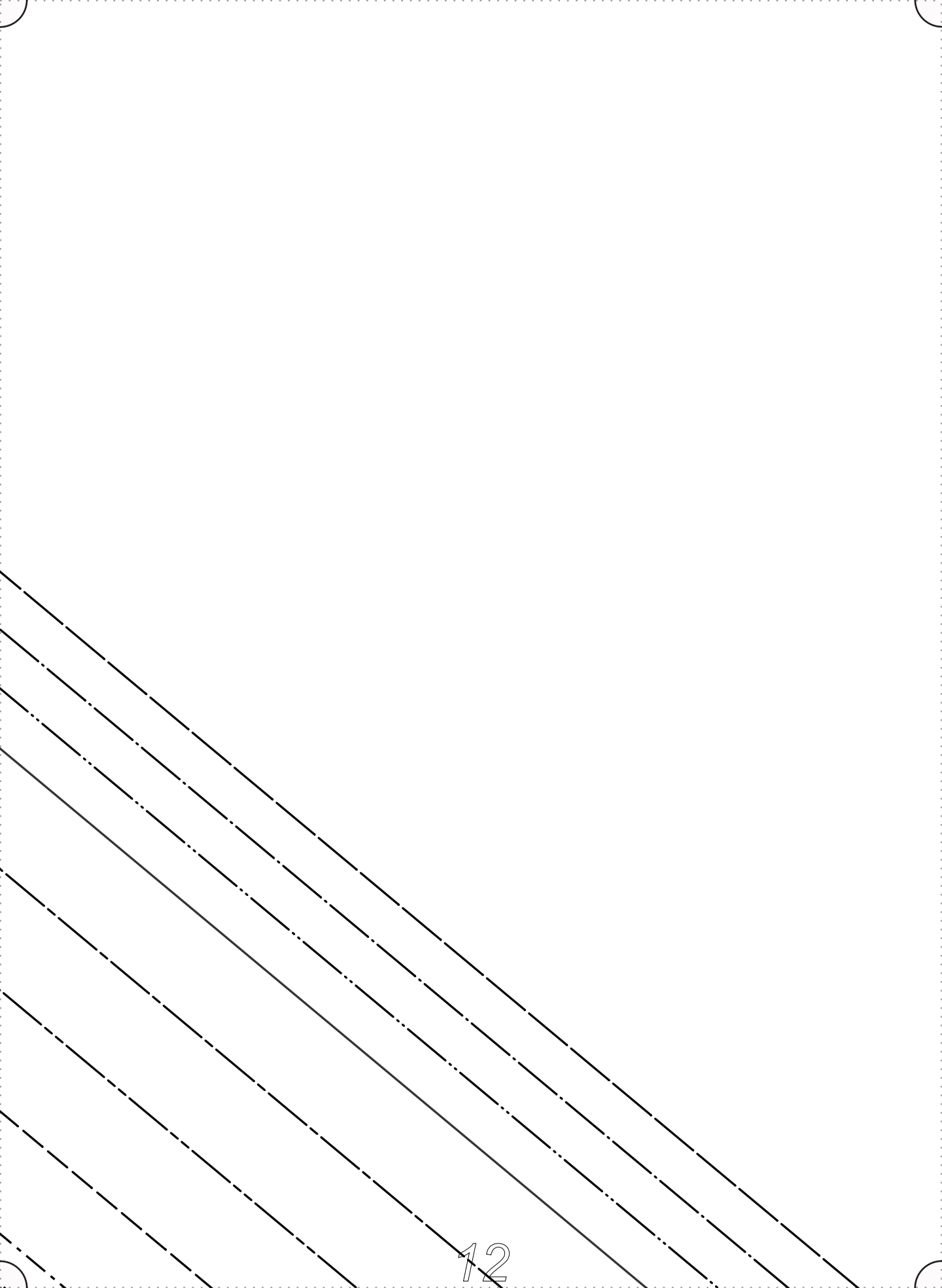
SIZE 24/26 _____

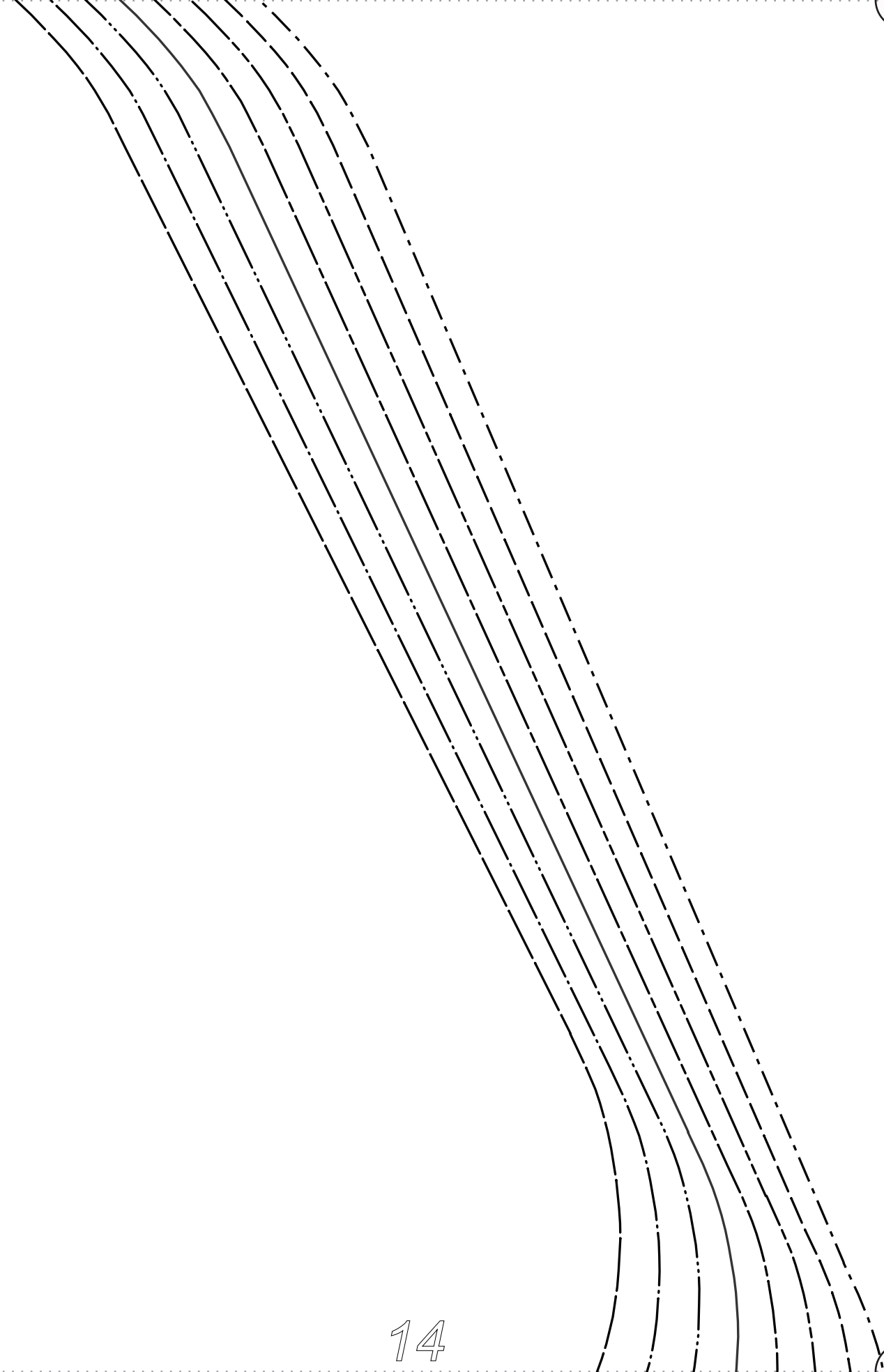
SIZE 28/30

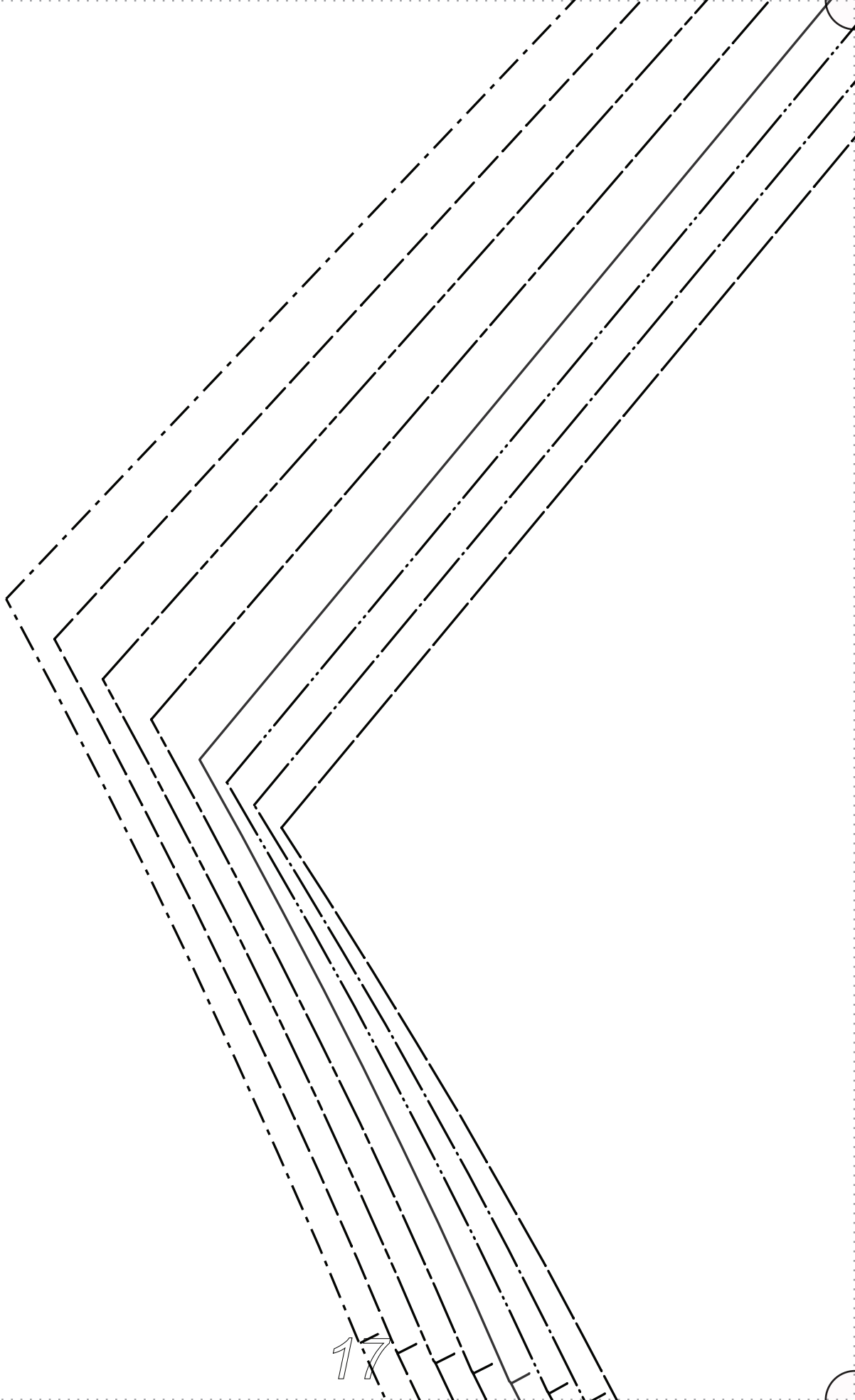
5/8"
SEAM ALLOWANCES
INCLUDED

GRAINLINE



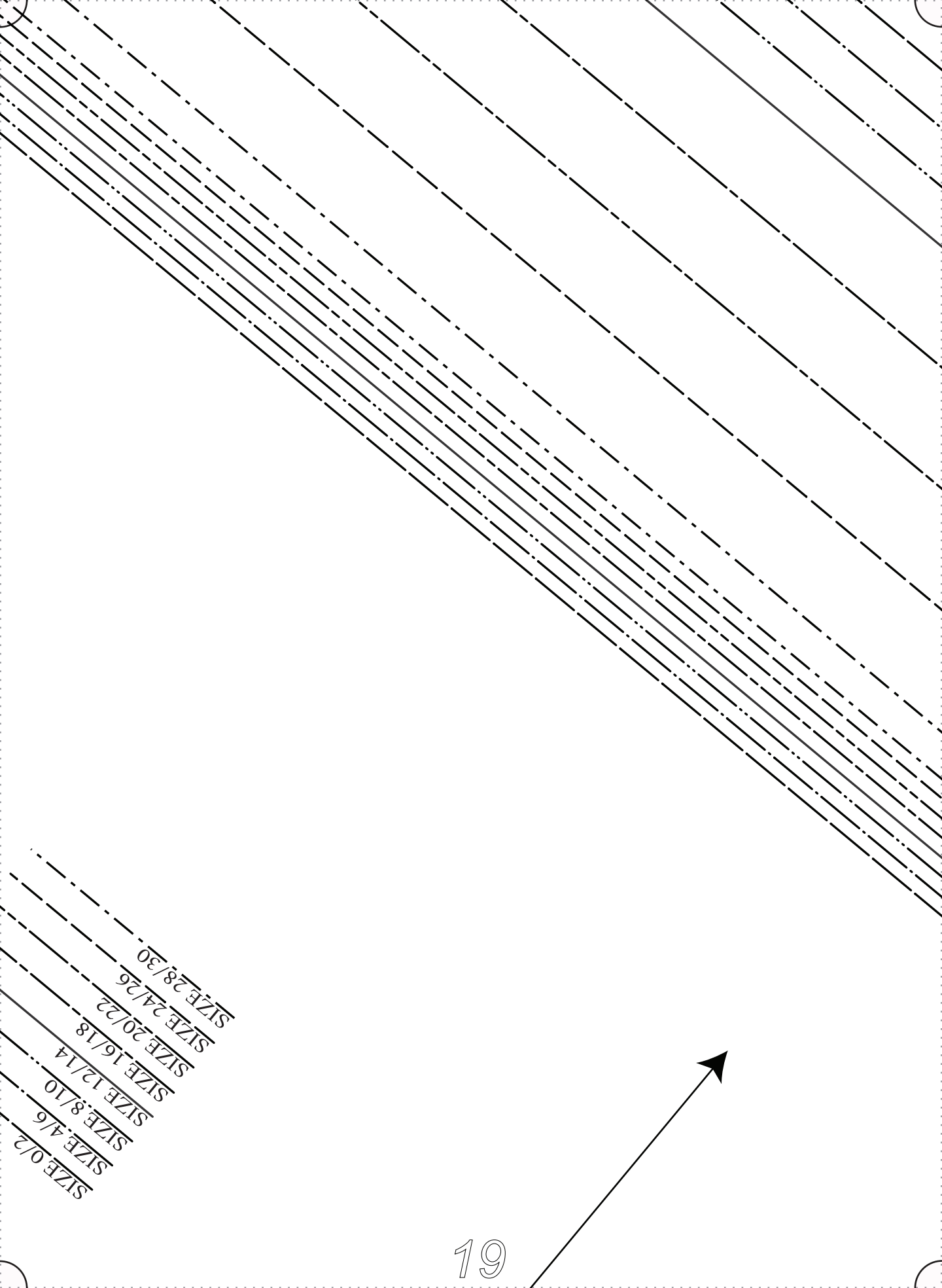




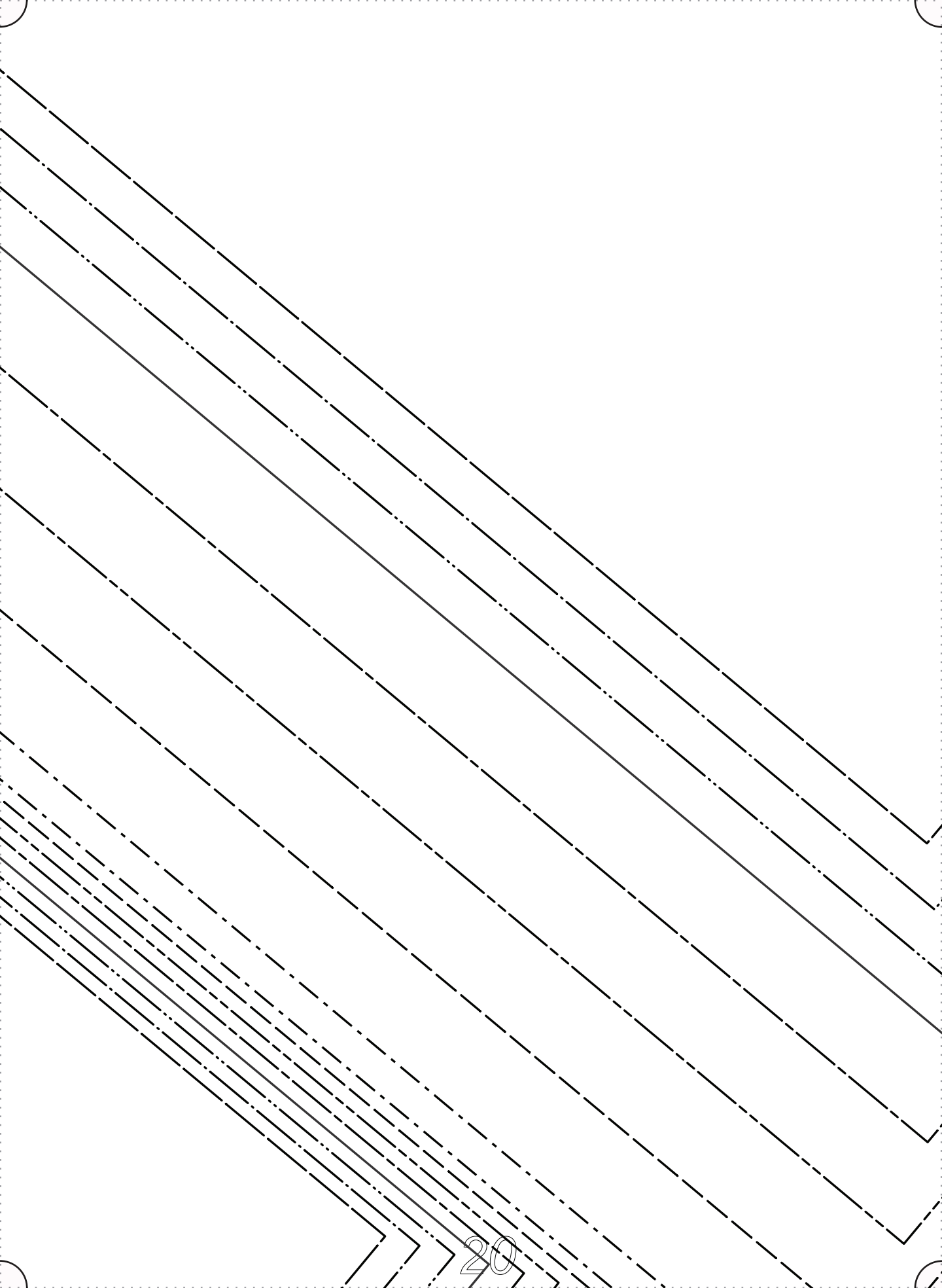


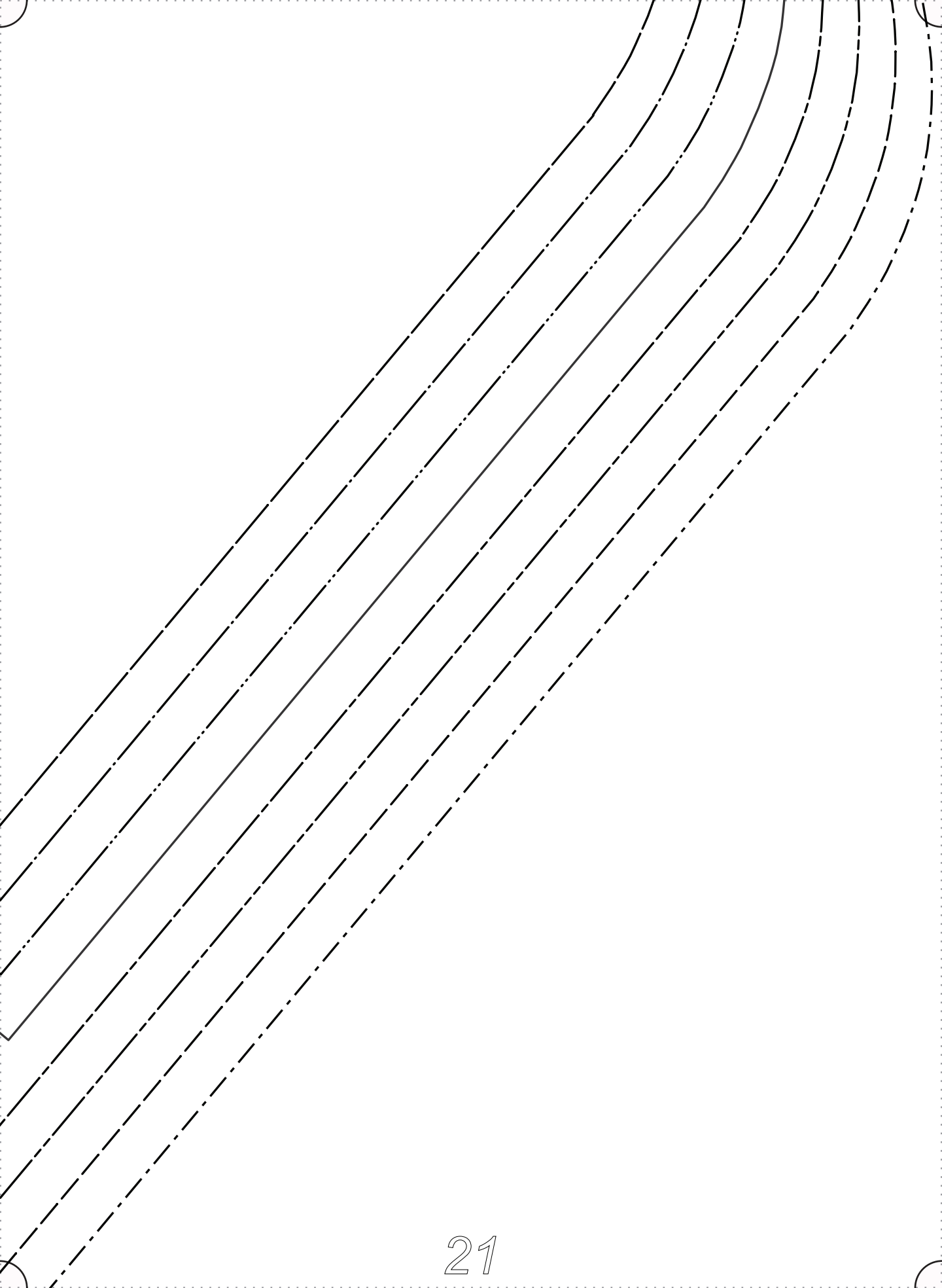
SEAM ALLOWANCES
5/8" INCLUDED

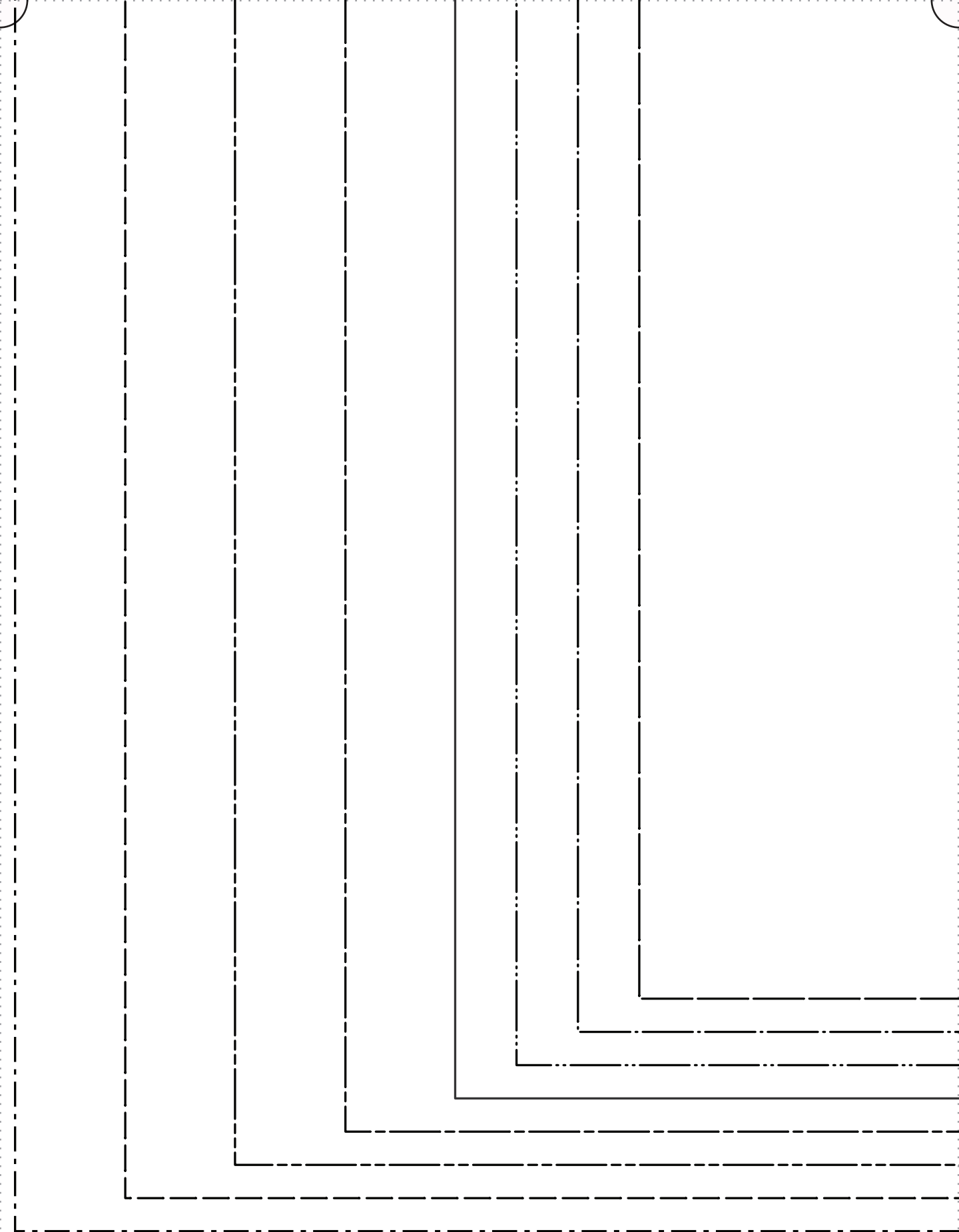
FACE TO FACE
IN LINEN
FT

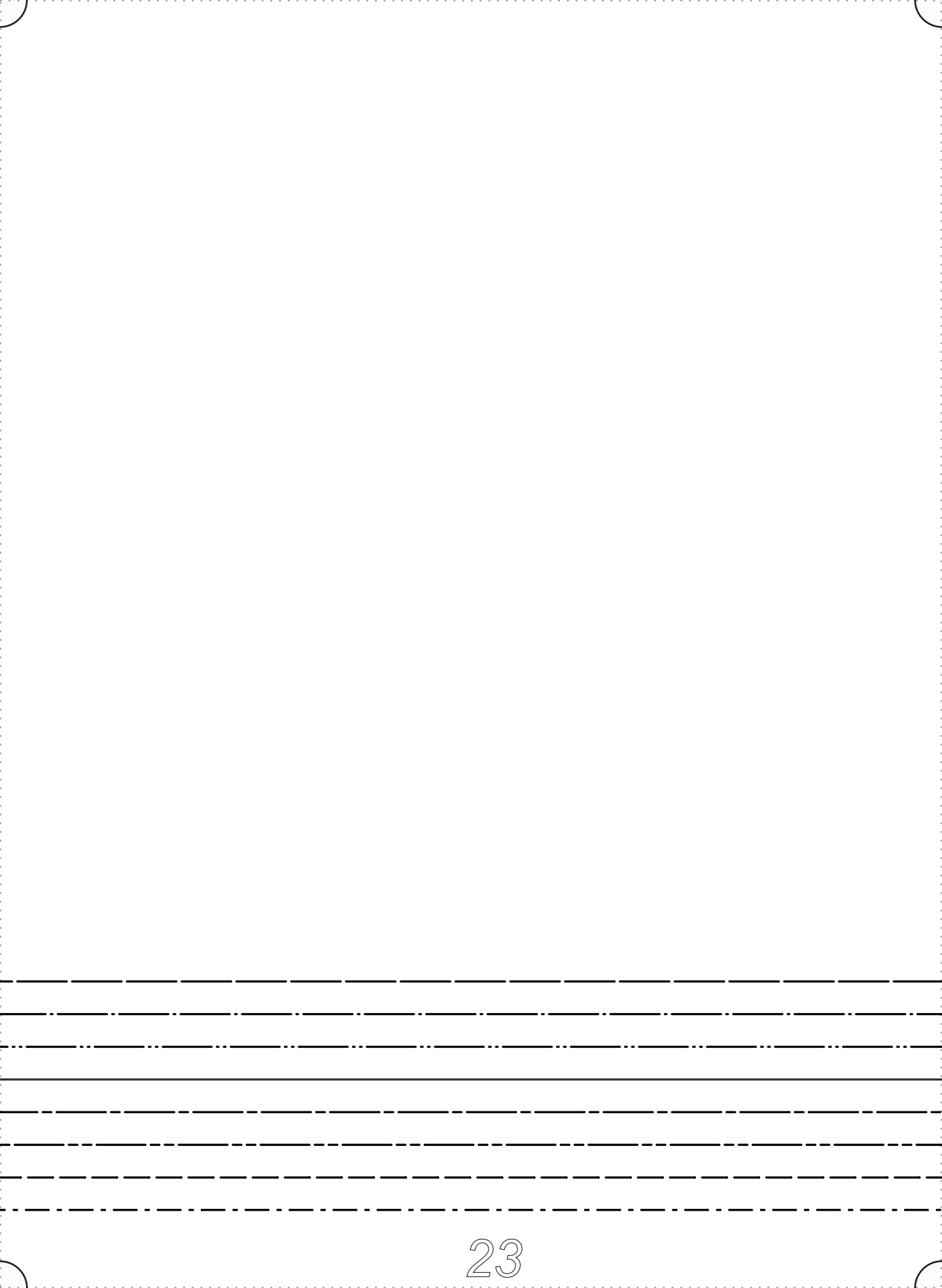


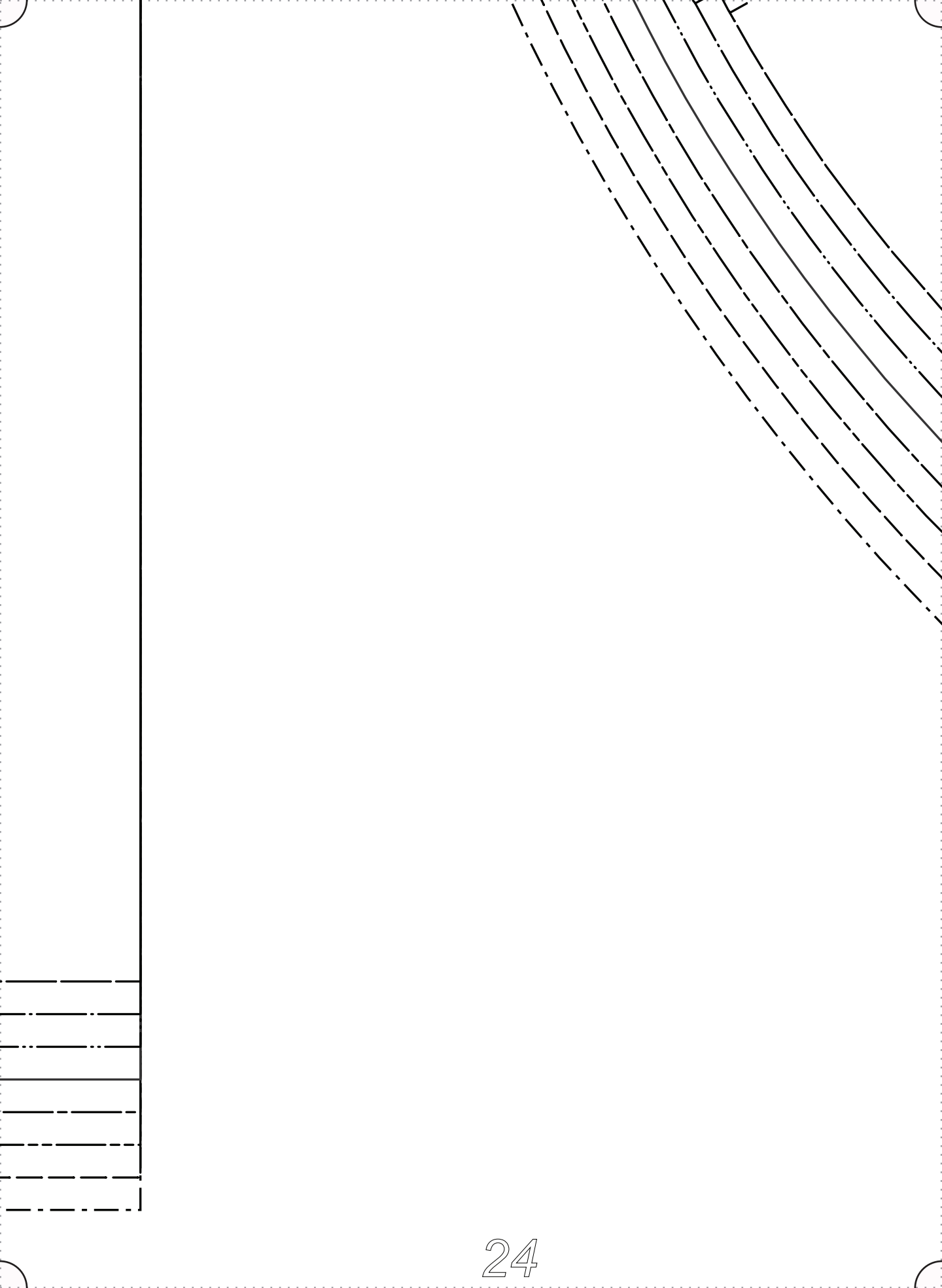
SIZE 0/2
SIZE 4/6
SIZE 8/10
SIZE 12/14
SIZE 16/18
SIZE 20/22
SIZE 24/26
SIZE 28/30







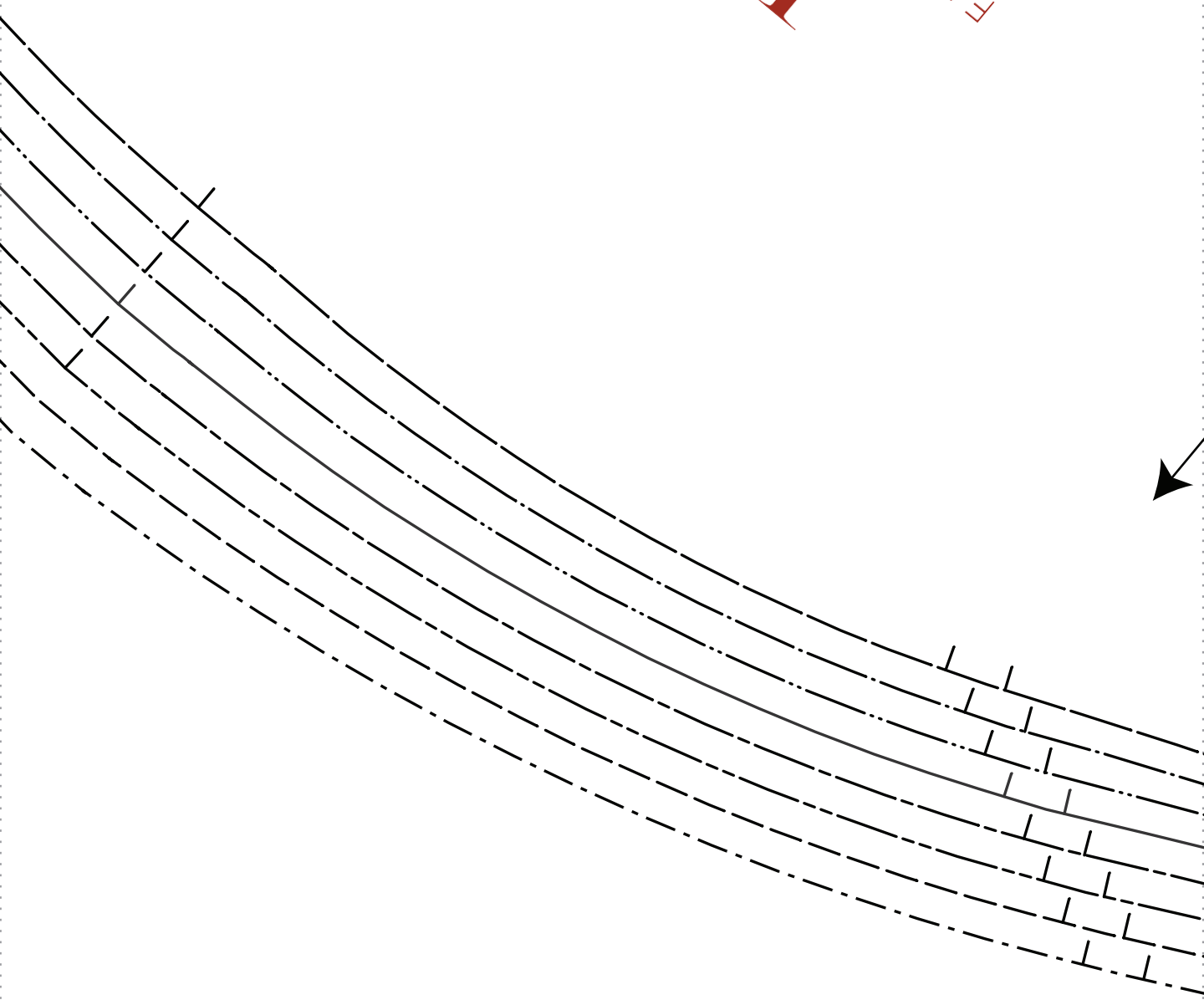




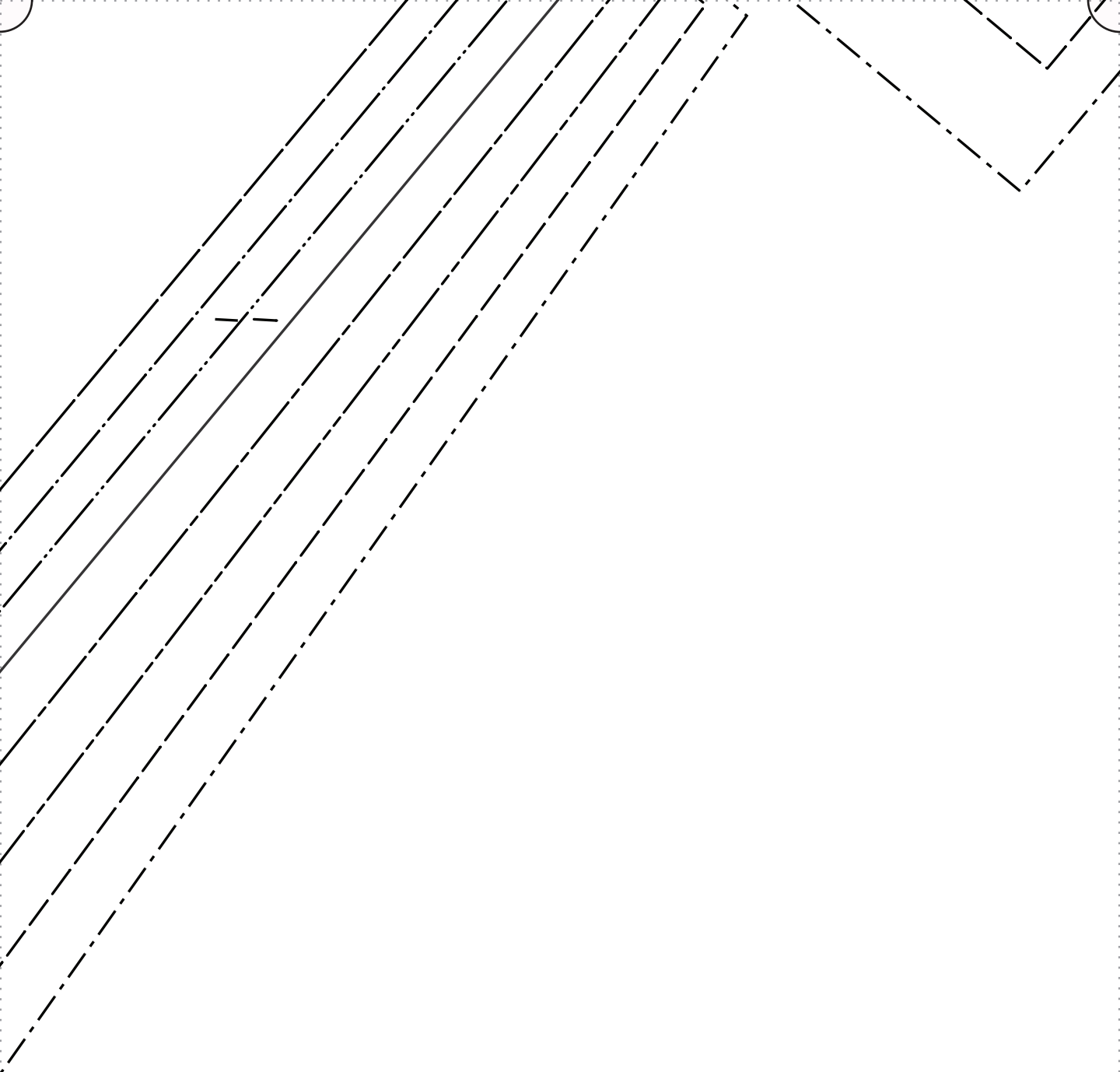
C: SLEEP
CUT 2

"NINA"

F/S
FABRICS-STORE.COM



GRAINLINE



Thank you

*We work hard on making our patterns beautiful enough to
meet your standards.*

*If you feel like sharing praise or helpful criticism, please
send us your comments to ask@fabrics-store.com*