

Pattern for our "Mona Trapeze Dress"

For instructions visit: blog.fabrics-store.com and enter "Mona Pattern" in the search box.

2" Square Scale Test

PRINT ONLY THIS PAGE FIRST TO CHECK SCALE
IMPORTANT! PRINT AT ACTUAL SIZE, 100%, OR
NO SCALING

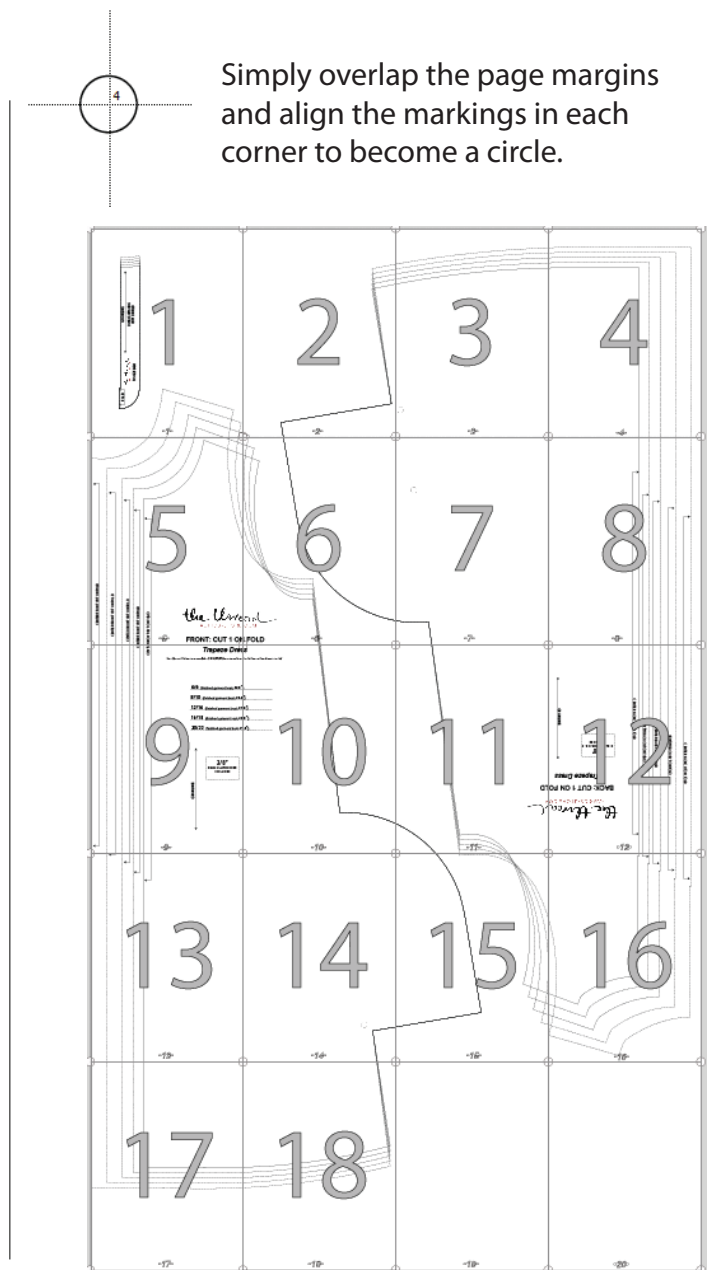
Please choose size based on desired finished garment bust measurement.

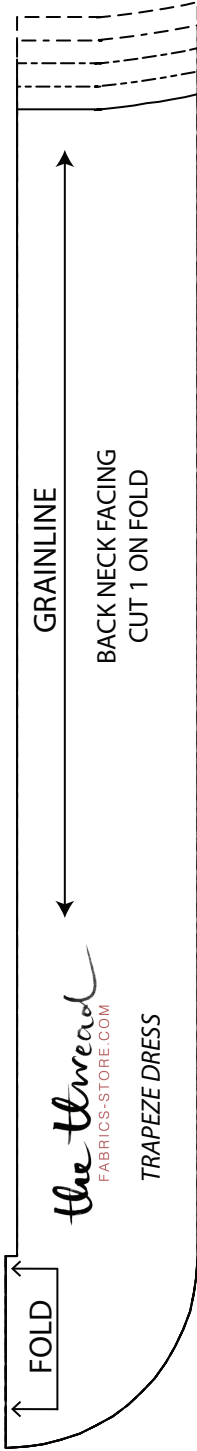
- 4/6 (finished garment bust: 33.5")
- 8/10 (finished garment bust: 35.5")
- 12/14 (finished garment bust: 37.5")
- 16/18 (finished garment bust: 40.5")
- 20/22 (finished garment bust: 43.5")

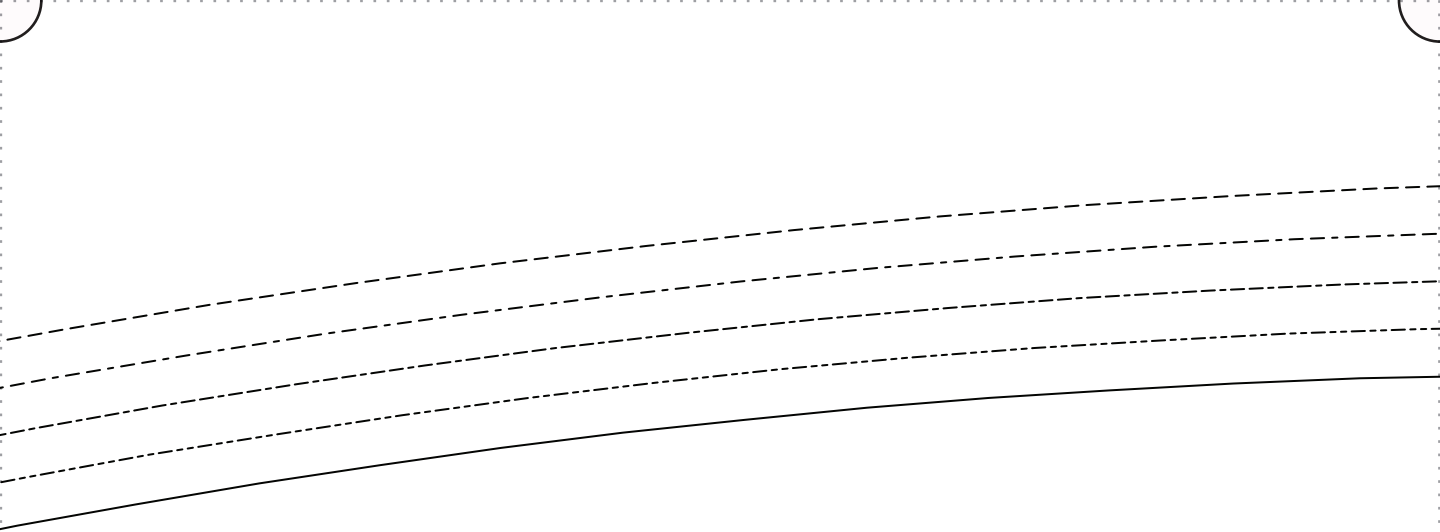
Layered PDF:

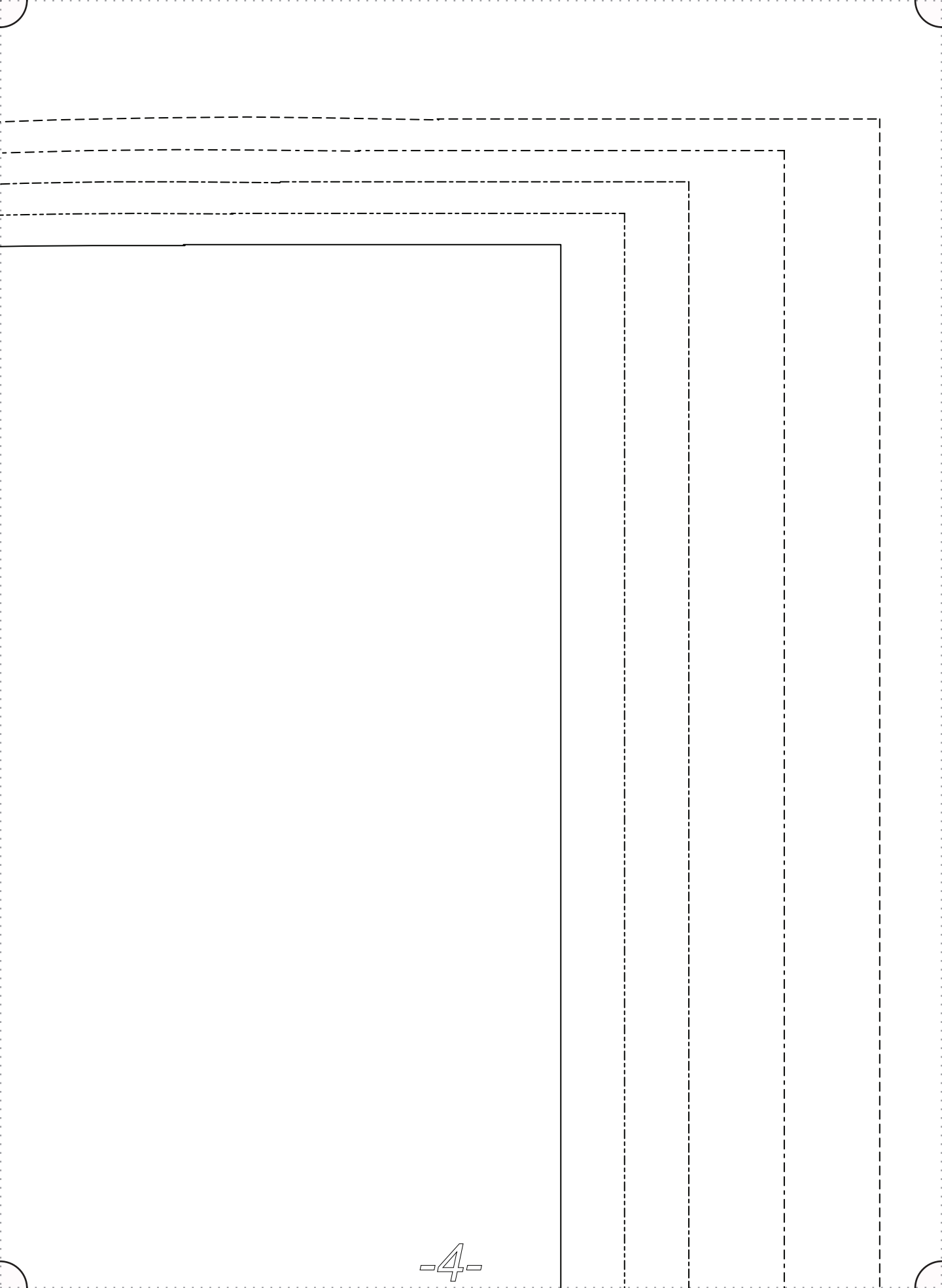
This pattern has embedded layers so you can print all sizes or a single size. See your .pdf viewers 'Layers' menu.

Simply overlap the page margins and align the markings in each corner to become a circle.











CENTER FRONT CUT ON FOLD

CENTER FRONT CUT ON FOLD

CENTER FRONT CUT ON FOLD

CENTER FRONT CUT ON FOLD

CENTER FRONT CUT ON FOLD

the three
FABRICS-STORE

FRONT: CUT 1 ON



ad
COM

FOLD



Trapeze Dress

4/6 (finished garment bust: 33.5")

8/10 (finished garment bust: 35.5")

12/14 (finished garment bust: 37.5")

16/18 (finished garment bust: 40")

20/22 (finished garment bust: 43")

3/8"
SEAM ALLOWANCES
INCLUDED

GRAINLINE



CENTER

CE

S

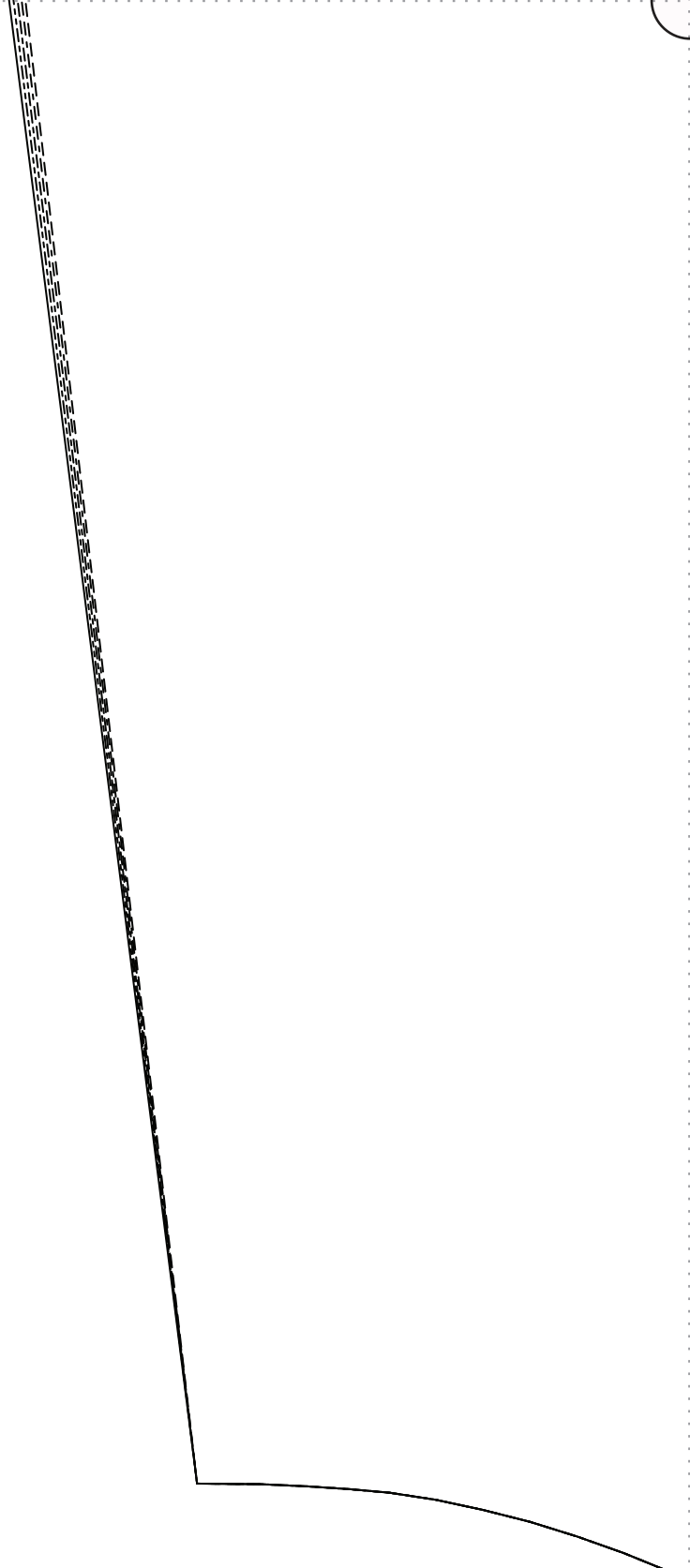
)

)

.5")

.5")

.5")



LD

M



CENTER BACK CUT ON FOLD

CENTER BACK CUT ON FOLD

CENTER BACK CUT ON FOLD

CENTER BACK CUT ON FOLD

CENTER BACK CUT ON FOLD

3/8" SEAM ALLOWANCES INCLUDED

GRAINLINE

BACK: CUT 1 ON FOLD
Trapeze Dress

the thread
FABRICS-STORE.CO

