

F|S

FABRICS-STORE.COM

*Our linen is nothing short of addicting*

# MAGDA LINEN PANTS



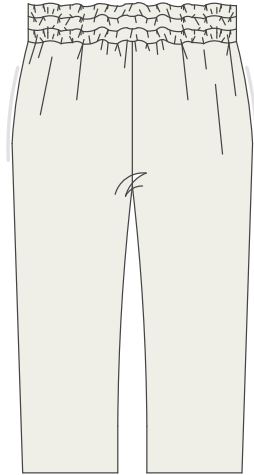
## SUMMER LOVES LINEN

*Nothing says summer like a crisp pair of white linen pants!  
These tapered pants have pockets and a comfortable  
elastic waistband. Wear with sneakers or heels!*

Ladies Sizes 0/2 to 28/30 Included

866.620.2008 ASK@FABRICS-STORE.COM FABRICS-STORE.COM

# PATTERN DETAILS



## MAGDA CRISP LINEN PANTS

Sizes: 0/2 to 28/30  
“LOOSE”

### SEWING INSTRUCTIONS

This pattern is featured on our blog “The Thread” at [Fabrics-Store.com](http://Fabrics-Store.com). There you will find step-by-step photo instructions and can ask questions, post comments, or share your progress. Simply visit: [blog.fabrics-store.com](http://blog.fabrics-store.com) and enter “Magda Pattern” in the search box.

### SIZING & YARDAGE

**Misses/Women's Size Guide Based on Body Measurements in Inches**

Size	0/2	4/6	8/10	12/14	16/18	20/22	24/26	28/30
Waist	25-26	27-28	29-30	31-32	34-37	38-41	42-45	46-48
Hip	35-36	37-38	39-40	41-42	44-47	48-51	52-55	56-58

**Finished Garment Measurements - Approximate in Inches**

Size	0/2	4/6	8/10	12/14	16/18	20/22	24/26	28/30
Hip	46	48	50	52	56	60	64	68
Inseam	24.25	24.75	25.25	25.75	26.25	26.75	27.25	27.75

**Estimated Yardage - 54" Width Linen - Shrinkage Has Been Calculated**

Size	0/2	4/6	8/10	12/14	16/18	20/22	24/26	28/30
Yardage	2 yards				2.75 yards			

*Pattern for our “Magda Crisp Linen Pant”*

For instructions visit: [blog.fabrics-store.com](http://blog.fabrics-store.com) and enter “Magda Pattern” in the search box.

2” Square  
Scale Test

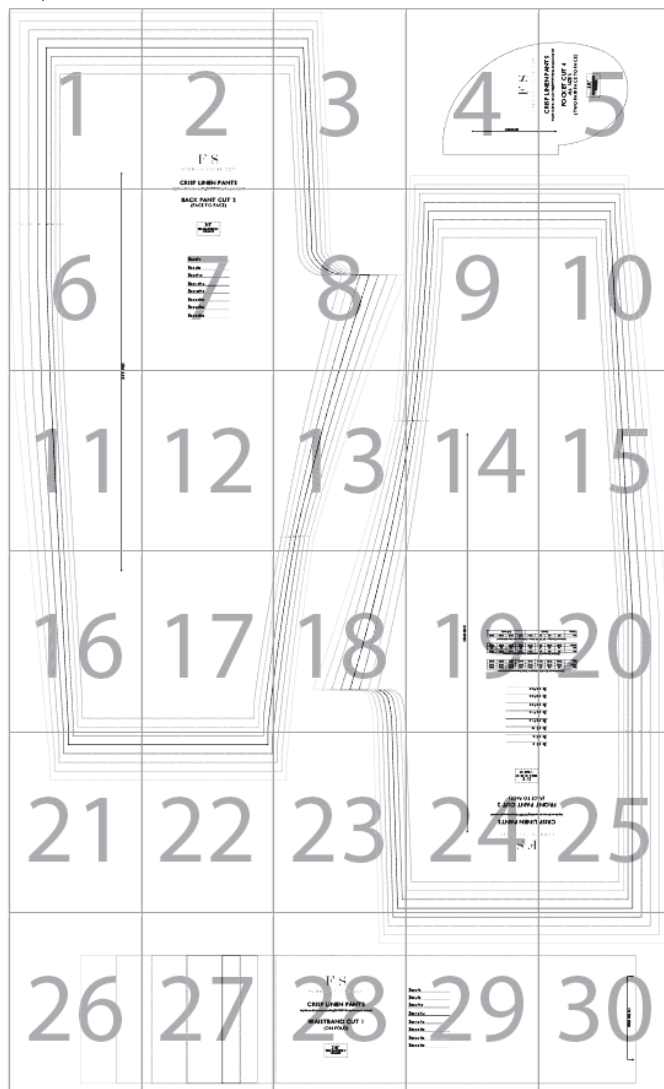
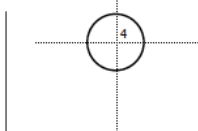
PRINT ONLY THIS PAGE FIRST TO CHECK SCALE

IMPORTANT! PRINT AT ACTUAL SIZE, 100%, OR  
NO SCALING

*Formatted for paper sizes A4 and Letter.*

Simply overlap the page margins and align the markings in each corner to complete the circle and tape in place.

Layered PDF:  
This pattern has embedded layers so you can print all sizes or a single size. See your .pdf viewers 'Layers' menu.

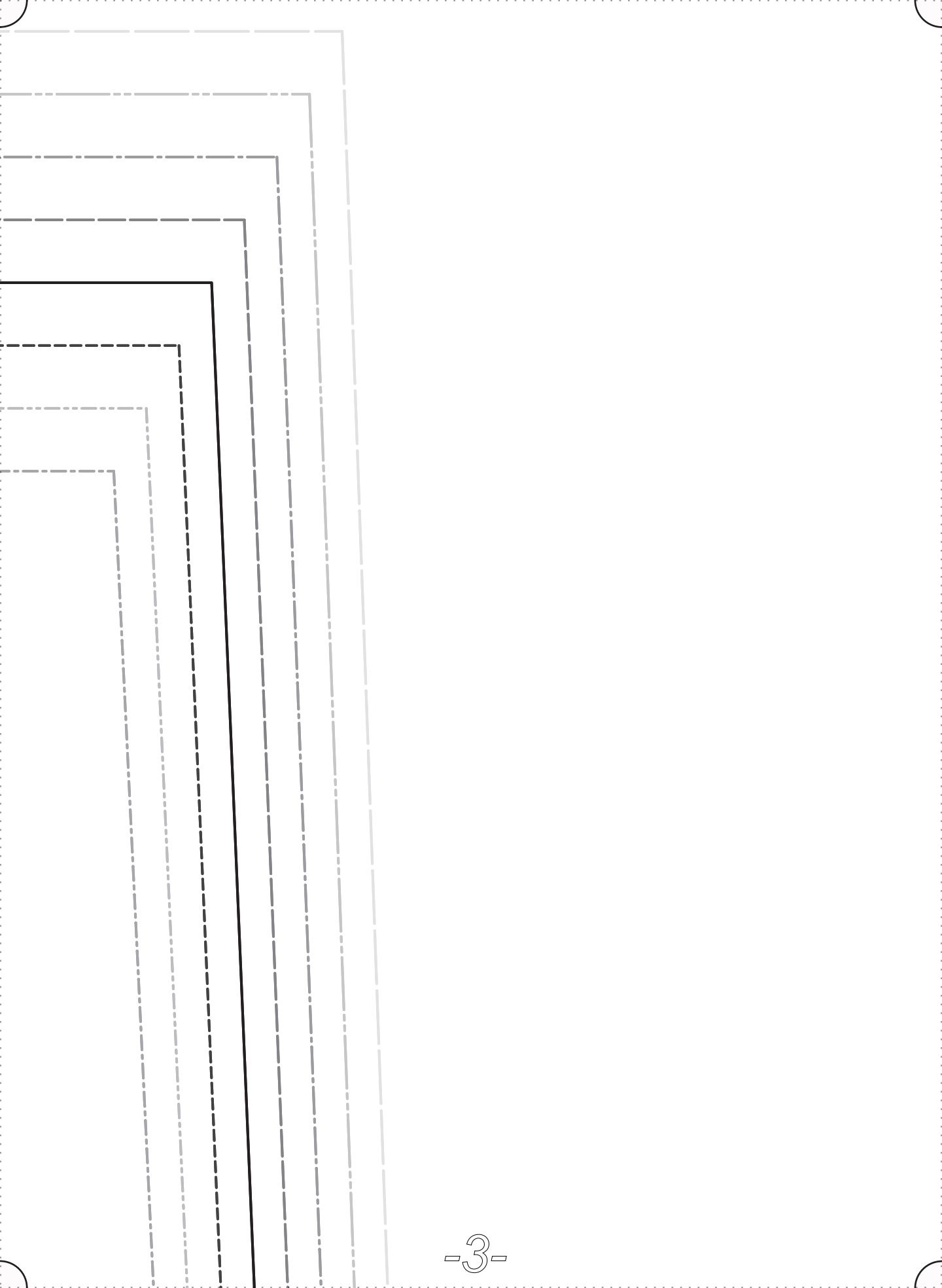






FABRICS-STORE.COM

**CRISP LINEN PANTS**

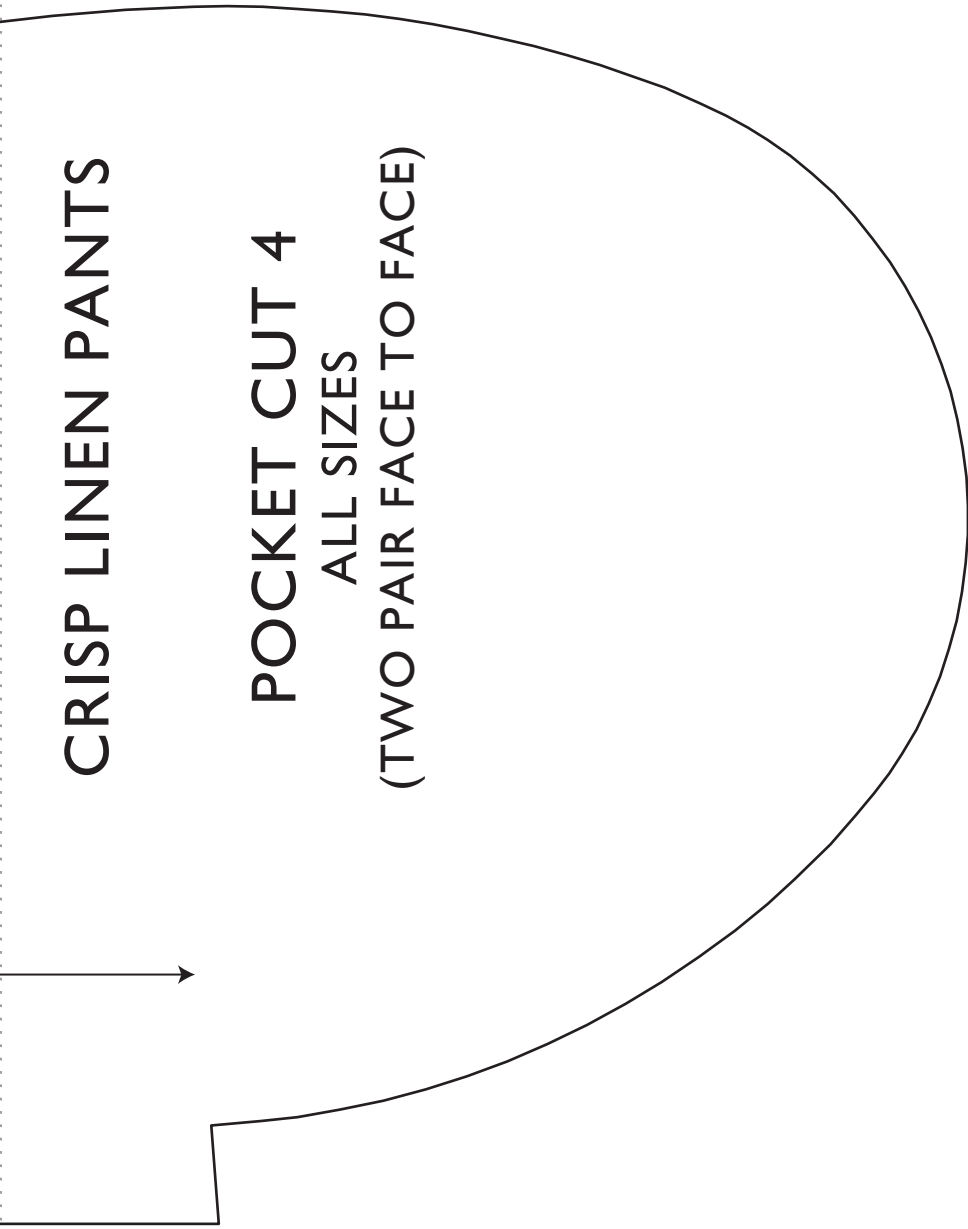


GRAINLINE



CRISP LINEN PANTS

POCKET CUT 4  
ALL SIZES  
(TWO PAIR FACE TO FACE)







# BACK PANT CUT 2

(FACE TO FACE)

5/8"

SEAM ALLOWANCES  
INCLUDED

Size 0/2 \_\_\_\_\_

Size 4/6 \_\_\_\_\_

Size 8/10 \_\_\_\_\_

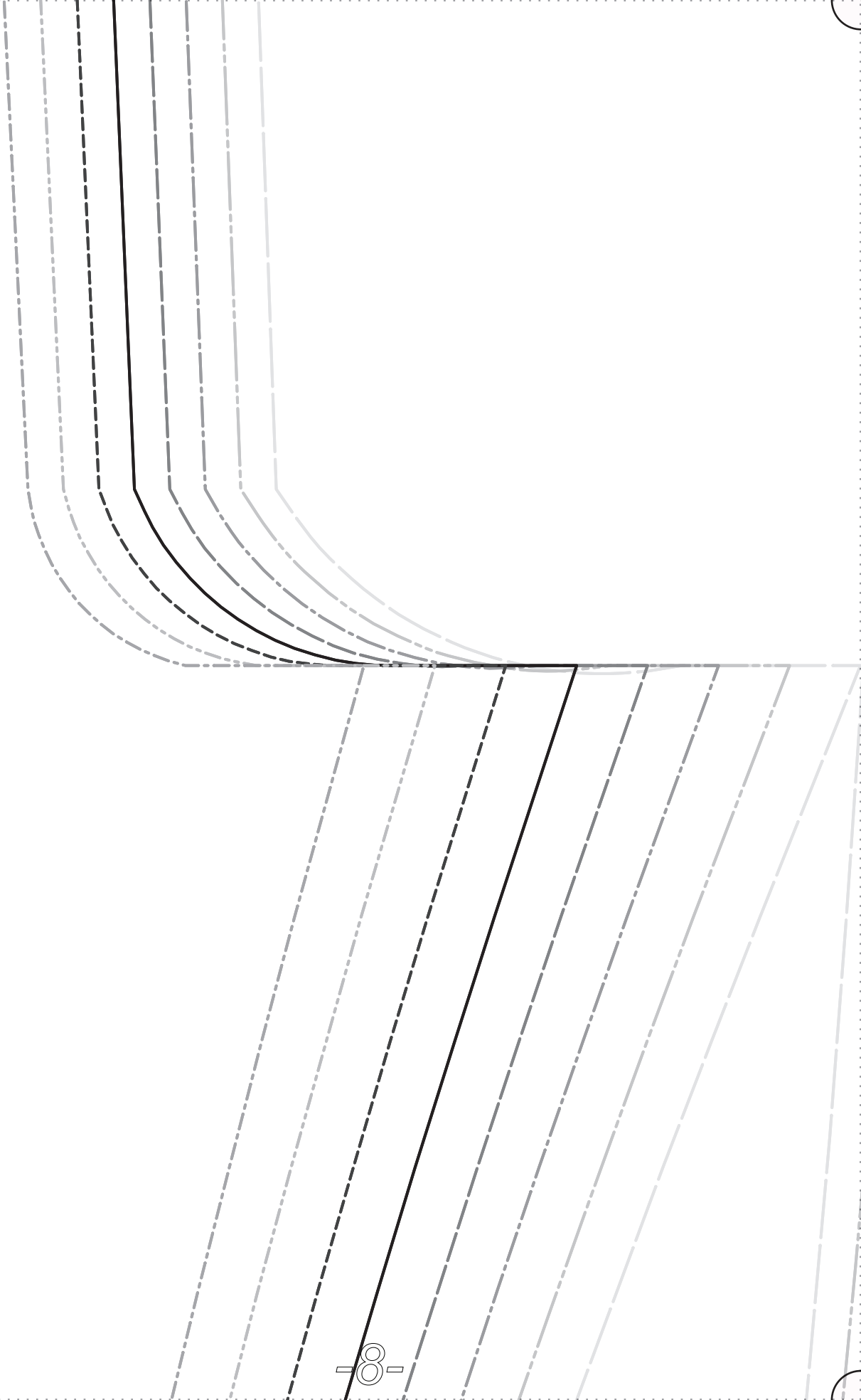
Size 12/14 \_\_\_\_\_

Size 16/18 \_\_\_\_\_

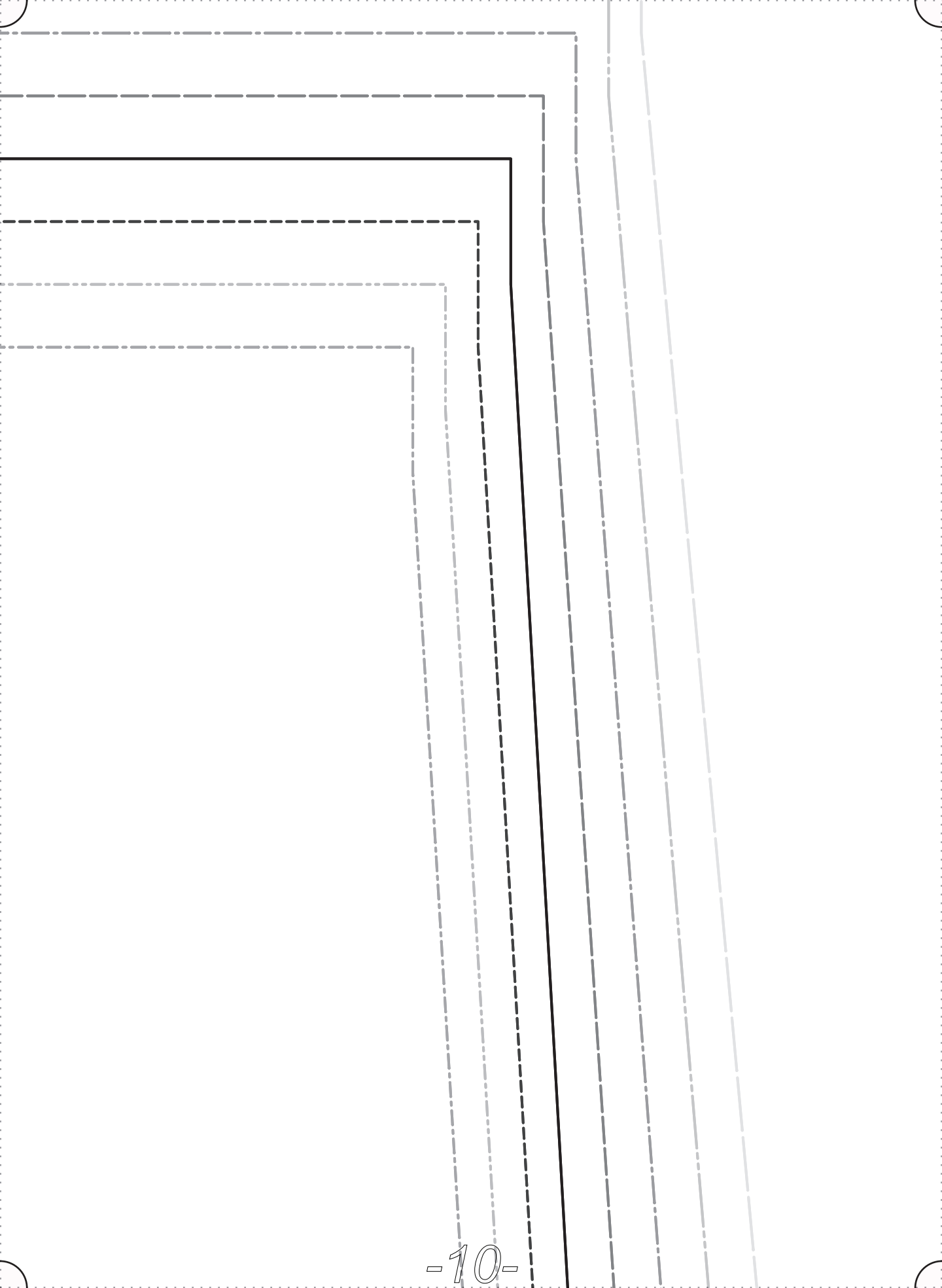
Size 20/22 \_\_\_\_\_

Size 24/26 \_\_\_\_\_

Size 28/30 \_\_\_\_\_





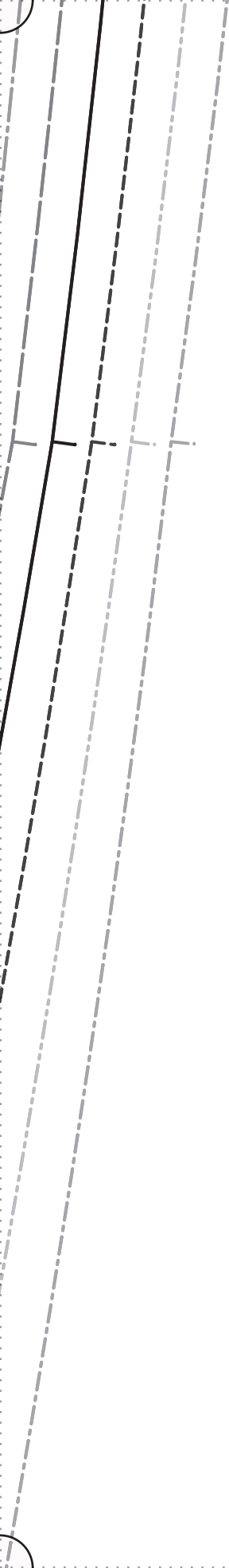








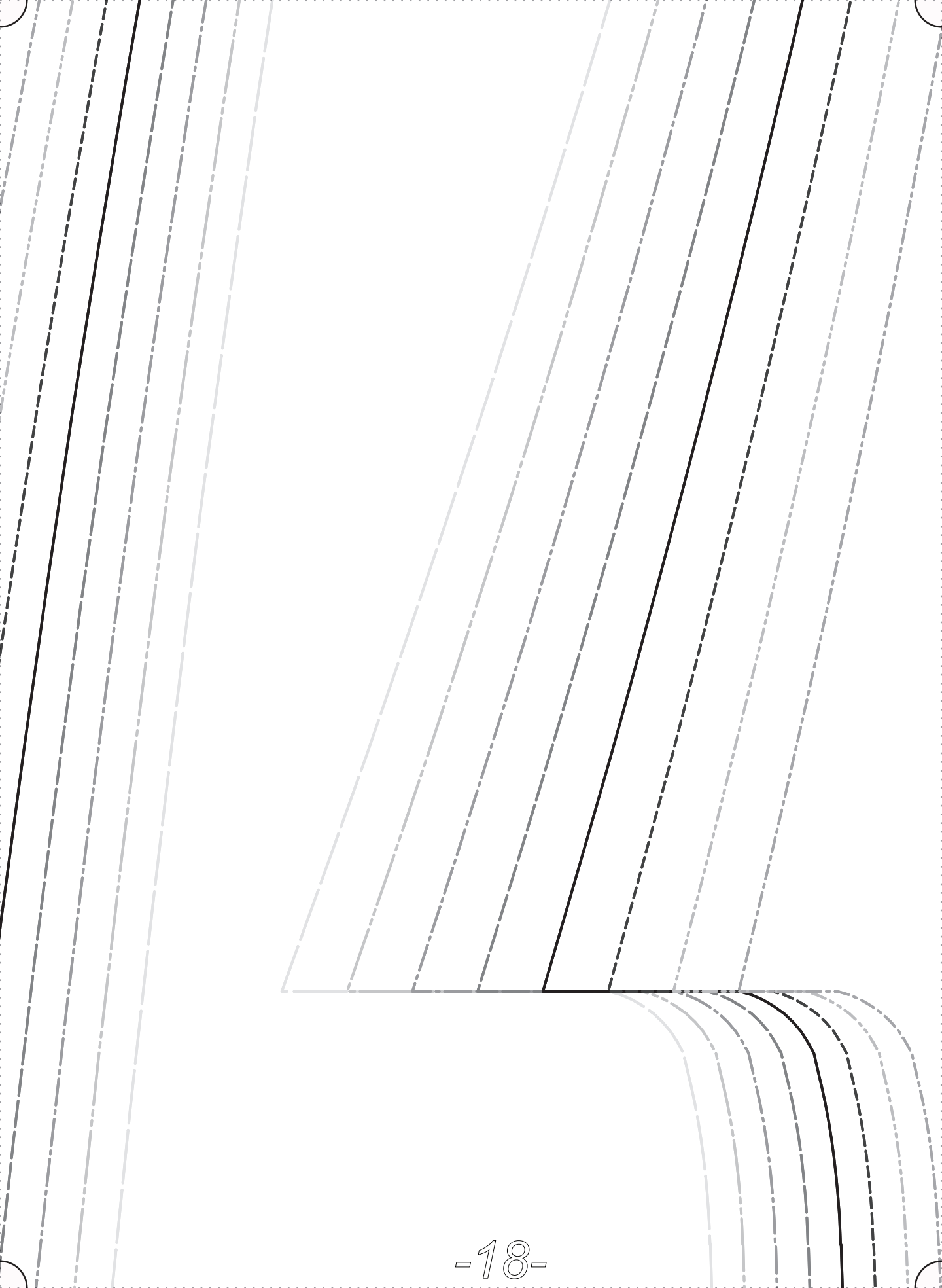












GRAINLINE

Size 8  
Size 1  
Size 1  
Size 2  
Size 2  
Size 2  
Size 2









SEAM ALLOWANCES  
5/8" INCLUDED

T PANT CUT 2  
(FACE TO FACE)

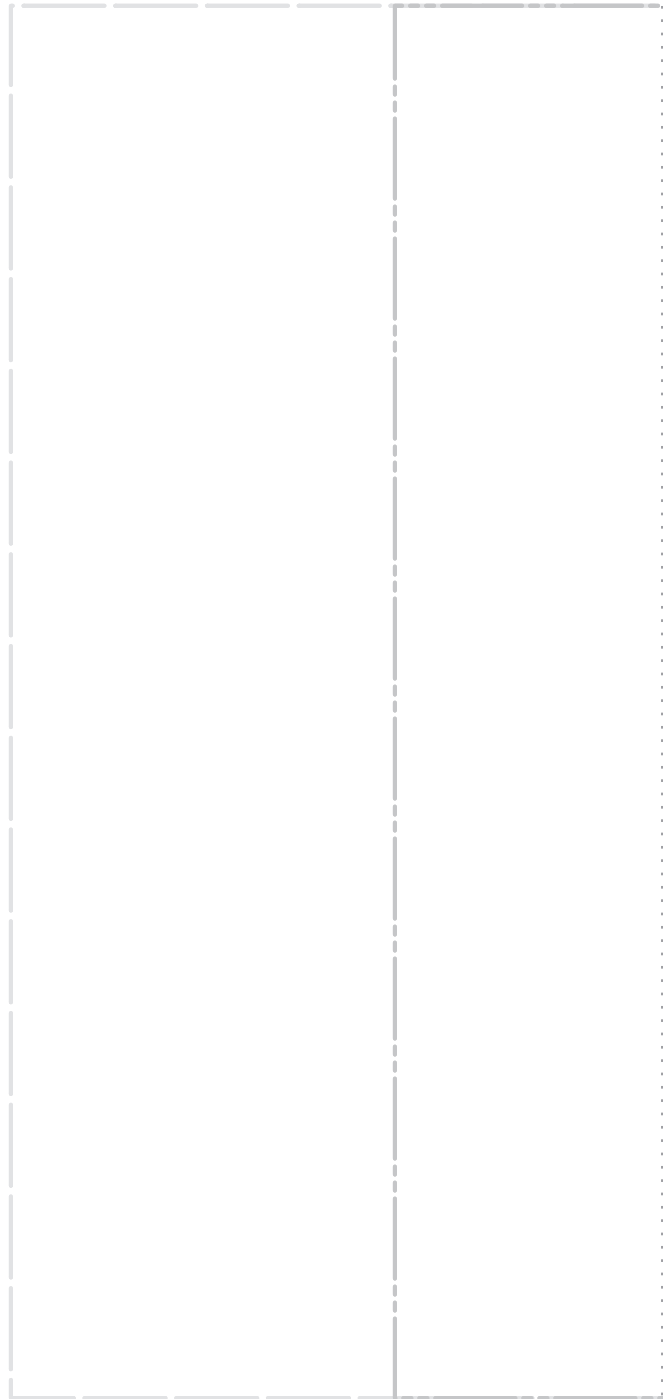
CS-STORE.COM

E|S



FRONT (FABRIC)

Size 4



--	--	--	--	--	--



FABRICS-STORE.COM

## CRISP LINEN PANTS

### WAISTBAND CUT I (ON FOLD)

**3/8"**

SEAM ALLOWANCES INCLUDED  
FOR WAISTBAND

Size 0/2

Size 4/6

Size 8/10

Size 12/14

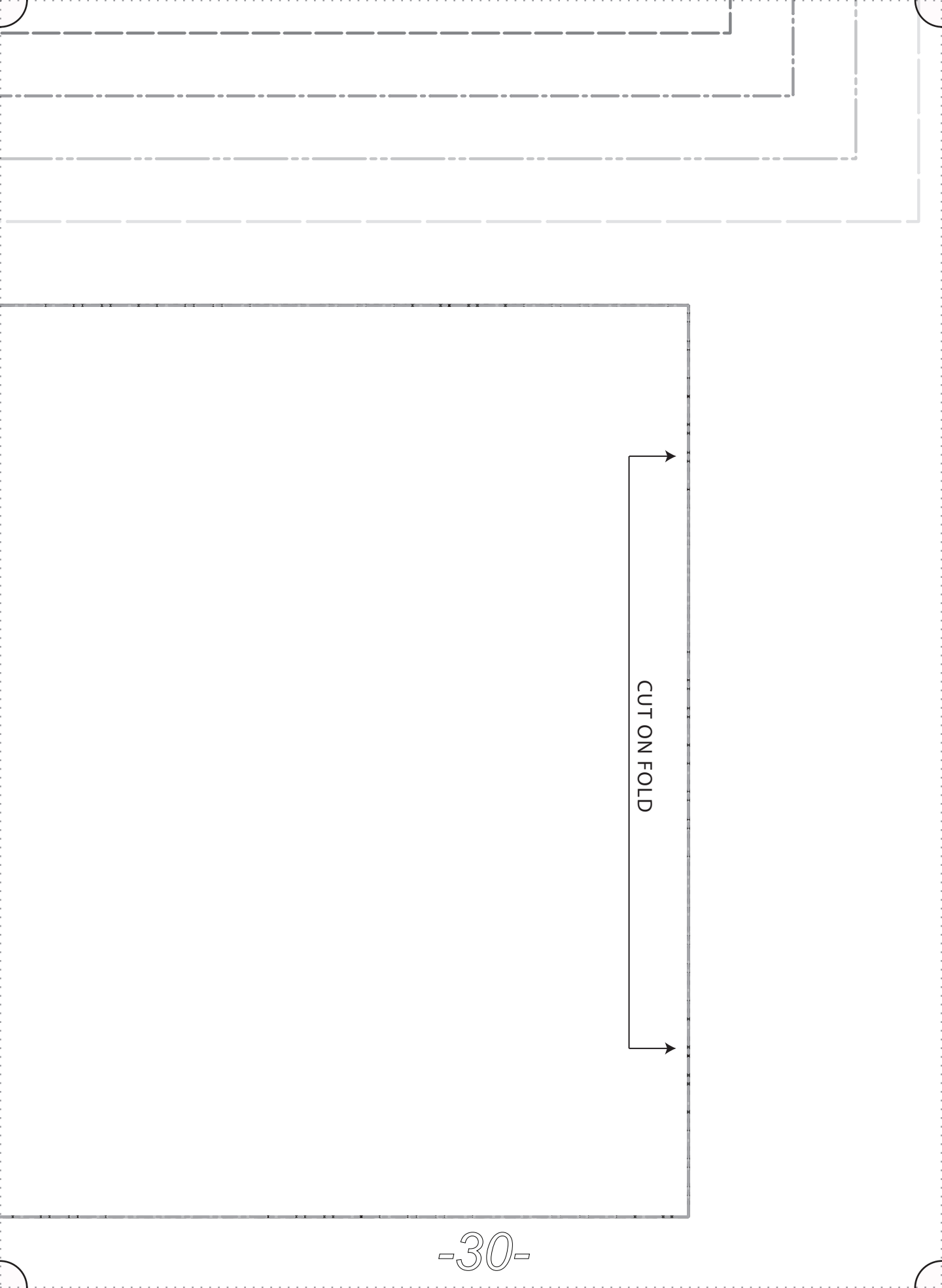
Size 16/18

Size 20/22

Size 24/26

Size 28/30





CUT ON FOLD

---

# *Thank you*

---

*We work hard on making our patterns beautiful enough to  
meet your standards.*

*If you feel like sharing praise or helpful criticism, please  
send us your comments to [ask@fabrics-store.com](mailto:ask@fabrics-store.com)*