

F|S

FABRICS-STORE.COM

*Our linen is nothing short of addicting*

# LOUISE PANTS



## LINEN GOES WIDE

*The exaggerated wide-leg silhouette “on trend” now, and forever a classic. They sit high on the waist to balance the dramatic volume.*

Sized for ladies 0/2 to 28/30

866.620.2008 ASK@FABRICS-STORE.COM FABRICS-STORE.COM

---

# LOUISE PATTERN

---

*Louise is a high-waist tailored pant with wide legs. Smooth flat front with back zipper closure. Fitted through the waist and hips, then gradually flowing into the wide sweeping hem.*

*Sized for ladies 0/2 to 28/30*

*Simple instructions for the intermediate sewist.*

---

PICTURED: LAURA WEARING IC64 5.3 OZ LINEN IN BLACK.



Our lovely model Laura is 5'10" and wearing size 4/6 of this pattern with the following adjustments: Rise lengthened 1", Inseam lengthened 3"

# PATTERN DETAILS



## LOUISE PANT

Sizes: 0/2 to 28/30

- Waistband with flat front
- Back zipper
- Back waist darts
- Fitted through waist and high hip
- Wide leg width
- Hook and eye at back waist

## FABRICS & SUPPLIES

### Fabrics:

- Main fabric: medium weight linen. We sampled Louise in our IC64 fabric. A finer quality 5.3 ounce medium weight 100% linen that is woven with finer threads, and increased thread count.
- 1/4 yard fusible interfacing

### Notions:

- Zipper: invisible or regular 8 to 10"
- Small hook & eyes for waist

To shop our IC64 colors visit [Fabrics-Store.com](https://www.fabrics-store.com)

## SIZING & YARDAGE

**Misses/Women's Size Guide Based on Body Measurements in Inches**

Size	0/2	4/6	8/10	12/14	16/18	20/22	24/26	28/30
Waist	24-25	26-27	28-29	30-31	33-35	37-39	41-43	45-47
Hip	35-36	37-38	39-40	41-42	44-46	48-50	52-54	56-58

**Finished Garment Measurements - Approximate in Inches**

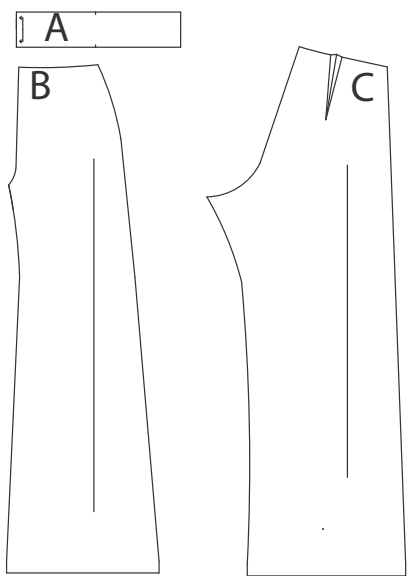
Size	0/2	4/6	8/10	12/14	16/18	20/22	24/26	28/30
Waist	25	27	29	31	35	39	43	47
Hips	37	39	41	43	47	51	55	59
Pant Inseam	32 1/2	33	33 1/2	34	34 1/2	35	35 1/2	36

**Estimated Yardage - 54" Width Linen - Shrinkage Has Been Calculated**

3.75 yards for all sizes

# PATTERN & CUTTING GUIDES

## PATTERN PIECE REFERENCE

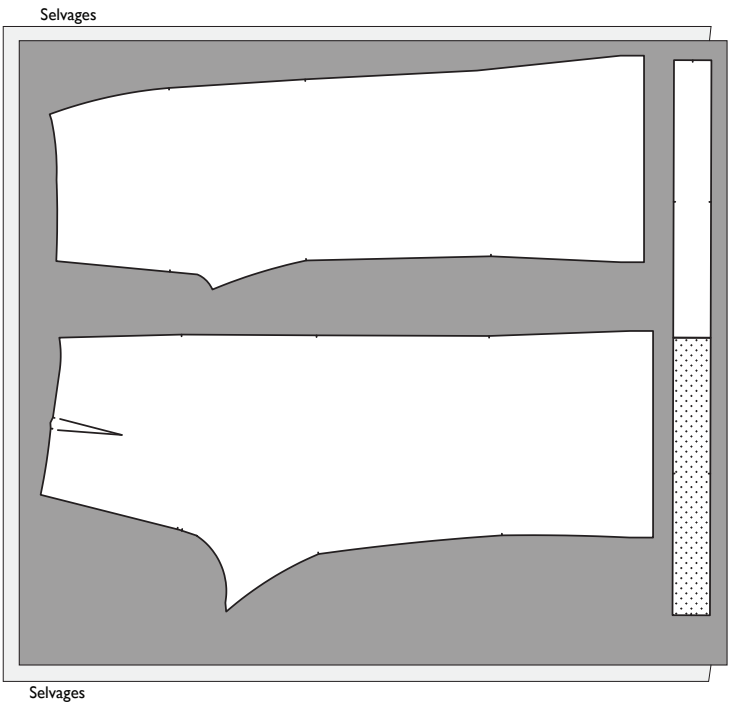


- A: WAISTBAND  
CUT 1 IN LINEN, 1 IN INTERFACING
- B: FRONT PANT  
CUT 2 IN LINEN "FACE TO FACE"
- C: BACK PANT  
CUT 2 IN LINEN "FACE TO FACE"

## CUTTING LAYOUT EXAMPLES

RIGHT SIDE OF PATTERN	BACK SIDE OF PATTERN	RIGHT SIDE OF FABRIC	WRONG SIDE OF FABRIC

2 LAYERS OF FABRIC "FACE TO FACE"  
CUTTING EXAMPLE FOR ALL SIZES



---

## SEWING & PREPARATION TIPS:

Sewing with quality linen from Fabrics-Store is very enjoyable! Linen is a stable fabric that does not easily shift or slip, which is a very helpful characteristic for sewing a neat and even seam with little effort. You do not need to “push” or “pull” the fabric while sewing... just simply guide it.

***Pre-washing:*** You will want to pre-wash and dry your linen fabric in the same manner you would your finished garment. This will soften your fabric, and eliminate further shrinkage in your final garment.

If you plan on only dry cleaning your final garment, likewise, you will want to dry clean the fabric before cutting and sewing. Secure the raw edges with a zig-zag stitch or serger before washing to avoid fraying. You can also sew the two raw edges together to form a continuous piece to avoid twisting in the wash. Remove fabric from dryer while it is still slightly moist. Press any deep creases or wrinkles using your iron's steam setting with high heat, using a protective press cloth if needed to avoid scorching.

***Fine Seaming:*** To ensure that your seaming will last as long as your linen garment, we encourage “single-needle” tailoring and French seaming. Once you think of French seams as simply sewing the seam twice to encase the raw edges, you will see that it does not take that much more time than the second step of using a serger. Setting the stitch length on your sewing machine to 2mm (about 12-14 stitches per inch) makes for a very durable seam, and is also an attractive indication of fine tailoring.

***Alternate Seaming:*** If you instead prefer to stitch your seams regularly and serge the raw edges, simply sew the seams with the full 5/8” allowance. You can then serge the raw edges, allowing the machine to trim 1/8” off the edges. This will result in seam allowances finishing at 1/2”.

***Pressing:*** For best results, it is highly recommended that you press your seams as you finish sewing each of them. Pressing with a steam iron (and press cloth if needed) will help “set” the stitches into the fabric. You will find it is much easier to press your seams “as you go” instead of trying to press them all after the garment is finished.

***Sewing Glossary:*** If certain sewing terms and techniques are new to you, please refer to the sewing glossary at the end of this document.

---

## SEWING INSTRUCTIONS:

1. Sew the darts and pleats.  
Sew the pant side seams using 5/8" seam allowances. French seams are wonderful but if you find this to be too bulky, a plain seam pressed open also works very well. Finish the raw edges with a zig-zag stitch, serger, or even a narrow bias binding.
2. Sew the leg inseams using 5/8" seam allowances in your desired seam method.
3. Sew the crotch seam from center front to center back, stopping at the bottom of the zipper opening.
4. Waistband: Iron the fusing to the inside of the waistband. Fold the full length of the waistband in half and press.
5. Sew one edge of the waistband to the waistband of the pant with RS together.
6. Press the seam allowance up towards the waistband.
7. Install the zipper into the back pant opening, sewing up into the waistband, stopping just before the center fold.
8. Fold back the upper edge of the waistband. Fold under the remaining seam allowance to "clean finish". Topstitch or hand stitch in place.
9. Hem the bottom of the legs. There is 1" hem allowance. If folding once, be sure to finish the raw edges. Hem by hand or topstich.
10. Sew hook and eye into the top of the waistband if desired.

---

# Glossary:

**Basting Stitch:** A temporary hand or machine loose or long stitch to hold a seam in place before sewing the final permanent stitching.

**Bias grain:** In woven fabrics, this is the diagonal direction at 45 degrees to the grain and crossgrain. There are two bias directions in the cloth, perpendicular to each other.

**Buttonhole:** A slit in the fabric to fasten a button. The raw edges of the slit are finished with a machine or hand sewn zig-zag stitch.

**Ease stitch:** A row of stitching sewn just to the inside of a single layer of seam allowance. While stitching, coax the weave of the fabric with your finger or awl to “compress” the fabric together. This creates a “gathering” effect without puckers. If desired, a second row of stitching can be done for more ease.

**Edge stitch:** A row of top stitching very close to a seamed edge or folded edge, usually about 1/16th of an inch.

**Fabric- right side:** The side of the fabric which will be the exposed, outside part of a garment.

**Fabric- wrong side:** The inside of the fabric which will be the unexposed side or inside of a garment.

**French seam:** A seam sewn in two steps to encase the raw edges of the fabric within itself, giving a clean finish. 1- Wrong sides together, sew 1/4” seam. 2- Turn right sides together, stitch 3/8” seam. Total 5/8” seam allowance.

**Grainline- cross grain:** The direction of fabric going from selvage edge to selvage edge. In woven fabric, these would also be known as the weft threads of the weave.

**Grainline- on grain:** The direction of fabric running parallel to the selvage edge of the cloth. This is also referred to as the “lengthwise grain”. In woven fabric, these would also be known as the “warp” threads of the weave.

**Notch- outward:** Markings on the pattern that indicate an outward triangular cut outside the seam allowance. Notch markings will be arranged to show where two seam edges join properly together. A single wedge will often indicate a front piece, and 2 to 3 wedges together can indicate back pieces.

**Notch- snip:** Markings on the pattern that indicate a small “snip” into the seam allowance. Notch marking will be arranged to show where two seam edges join properly together. A single notch will often indicate a front piece, and 2 to 3 notches together can indicate back pieces.



---

## Glossary (continued):

**Overlock machine:** A specialized sewing machine designed to sew and cut along the raw edge of a fabric seam with a networked stitch to secure the edges from fraying. Also known as a serger.

**Press cloth:** A piece of cloth used to lay over a garment to protect it while ironing from burning or scorching. Usually made of cotton or linen or wool.

**Raw edge:** The cut edge of fabric. If not secured with stitching or a finishing, the raw edge of a fabric can fray or unravel.

**Seam allowance:** The distance from the cut edge of a pattern piece to the sewing line. Seam allowances can vary, so be sure to double check the indicated amounts on your pattern.

**Stay stitch:** A row of stitching on a single layer of the seam allowance edge to prevent stretching. You are neither pushing or pulling the fabric- just guiding. The row of stitching will be just to the inside of the permanent seam allowance width. For example, if the seam allowance is 5/8", your stay stitch will be 1/2" or a "scant" 5/8". You will want your permanent stitching to conceal the stay stitch.

**Understitch:** A row of stitching on a the seamed edge of facing. This prevents the facing from rolling out to the outside and keeps it neatly in place along the garment edge. The stitching will only go on the facing side, catching the seam allowance with it. The stitching will show on the facing, but not on the garment side.

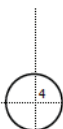
*“Louise” Sewing Pattern*

2 Inch  
Square to  
Check Print  
Accuracy

**PRINT ONLY THIS PAGE FIRST TO CHECK SCALE**

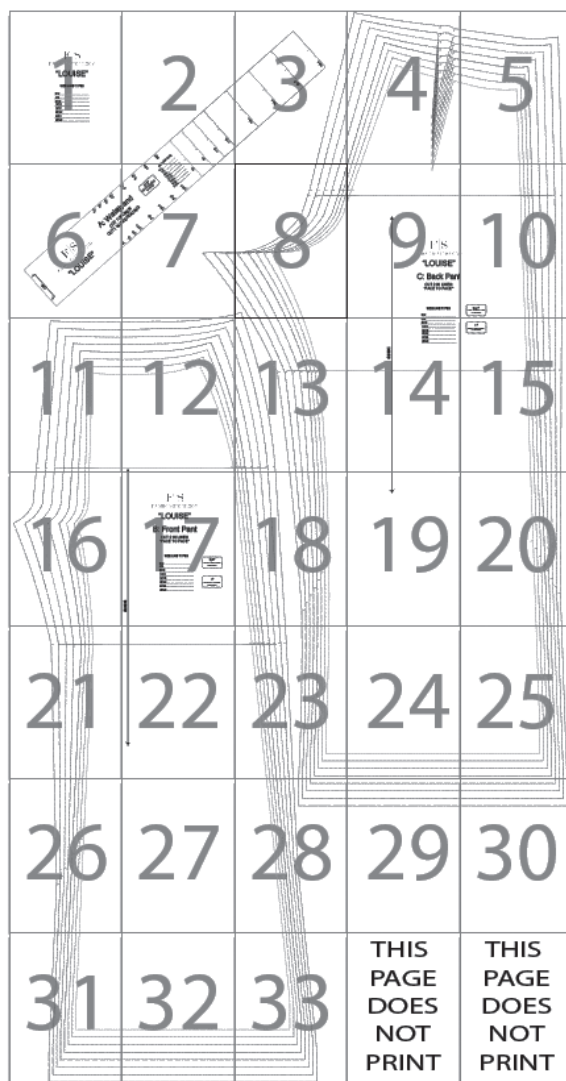
IMPORTANT! PRINT AT ACTUAL SIZE, 100%, OR NO  
SCALING.

*Formatted for paper sizes A4 and Letter.*



Simply overlap the page margins and  
align the markings in each corner to  
complete the circle and tape in place.

**Layered PDF:**  
This pattern has embedded  
layers so you can print all  
sizes or a single size. See  
your .pdf viewers 'Layers'  
menu.





FABRICS-STORE.COM

# “LOUISE”

## SIZE LINE TYPES

0/2 \_\_\_\_\_

4/6 \_\_\_\_\_

8/10 \_\_\_\_\_

12/14 \_\_\_\_\_

16/18 \_\_\_\_\_

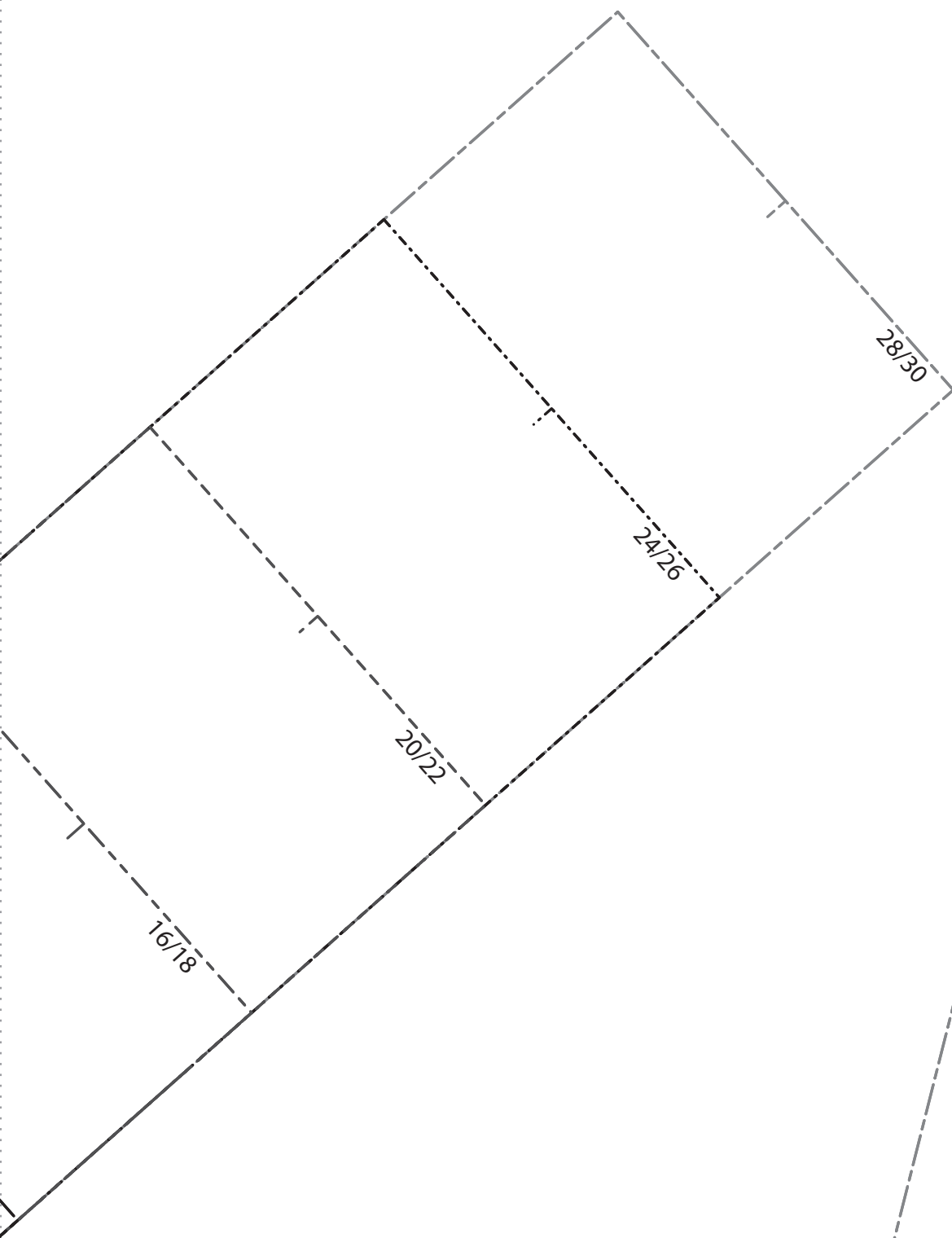
20/22 \_\_\_\_\_

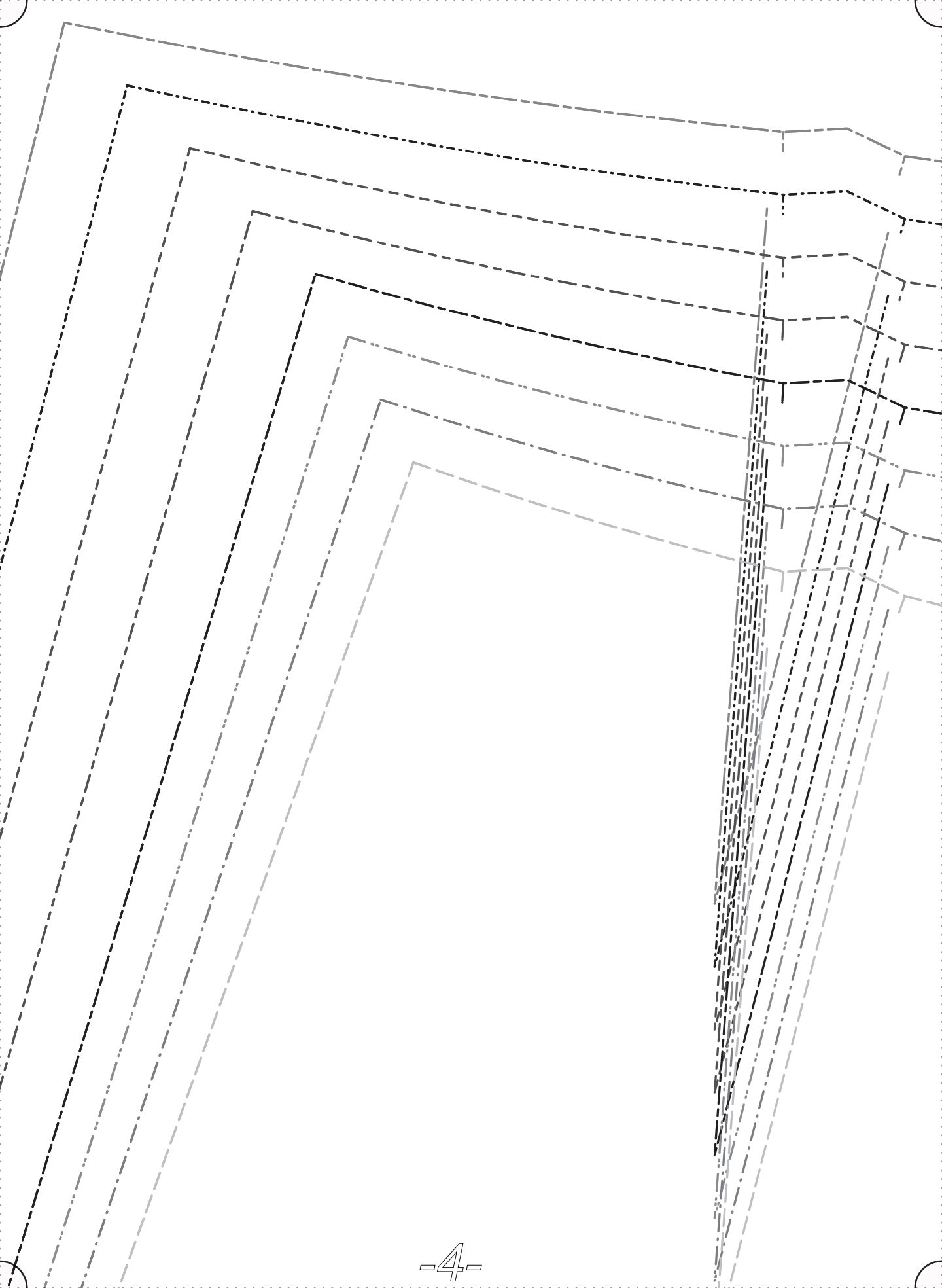
24/26 \_\_\_\_\_

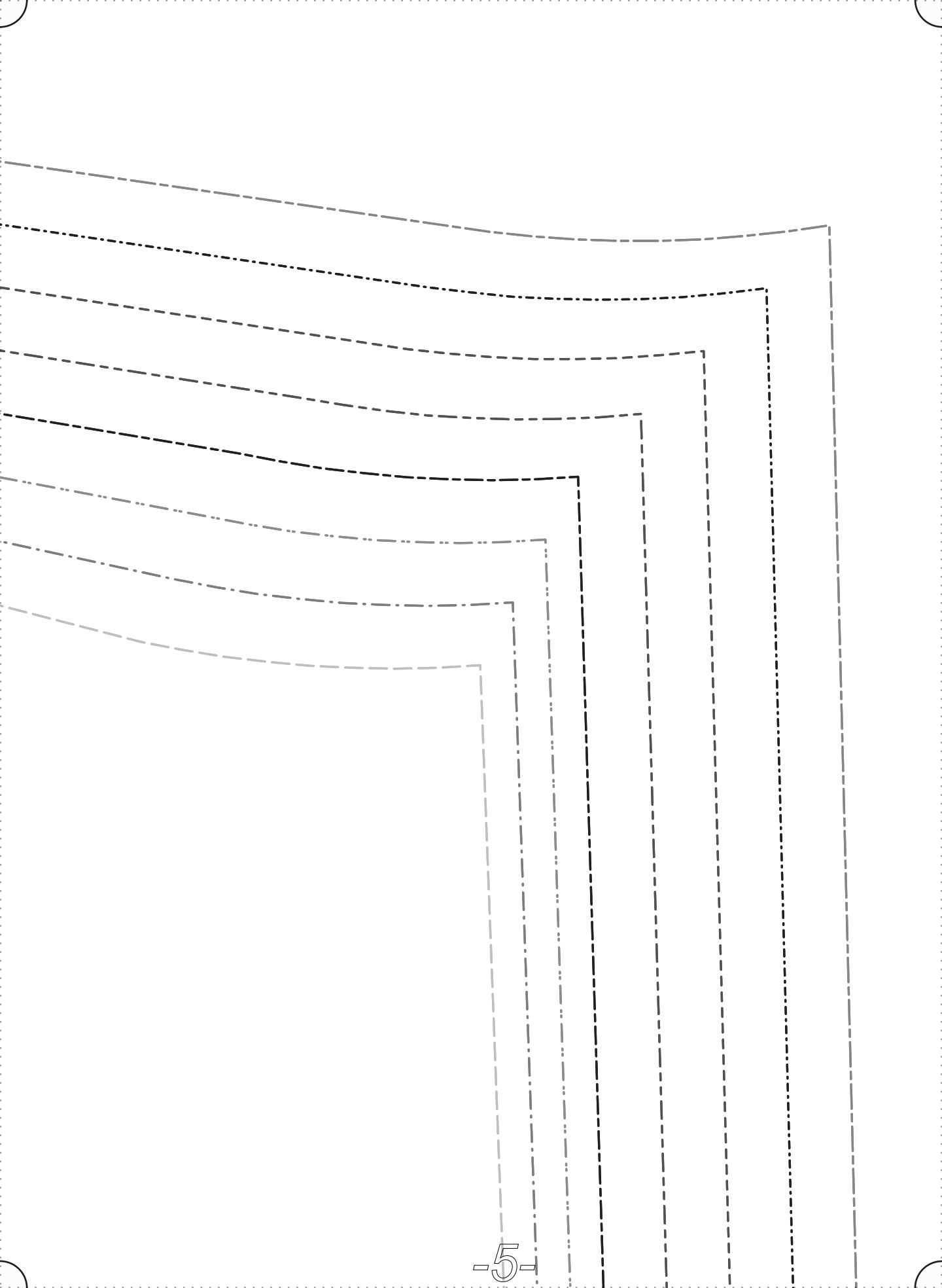
28/30 \_\_\_\_\_

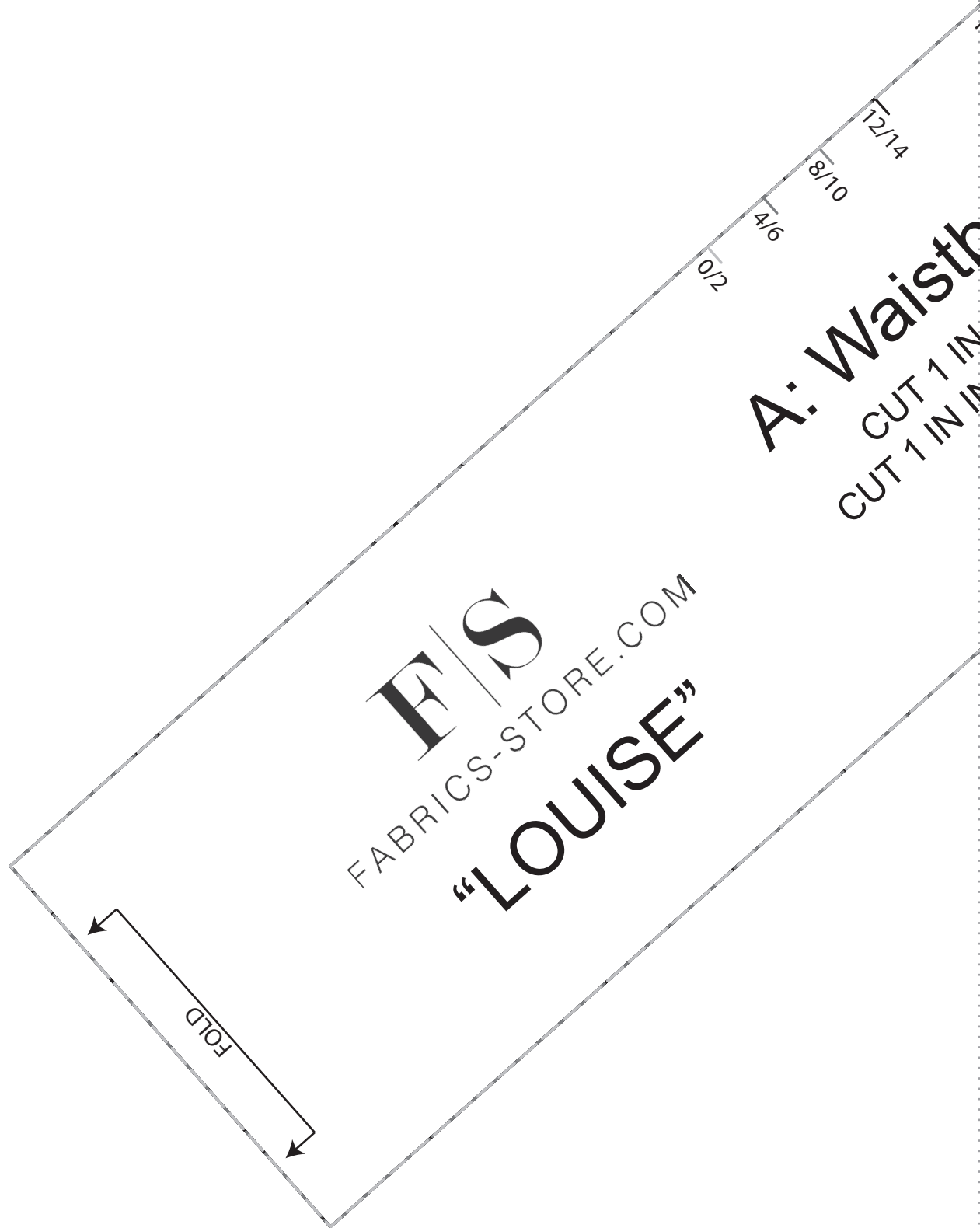


LINE TYPES



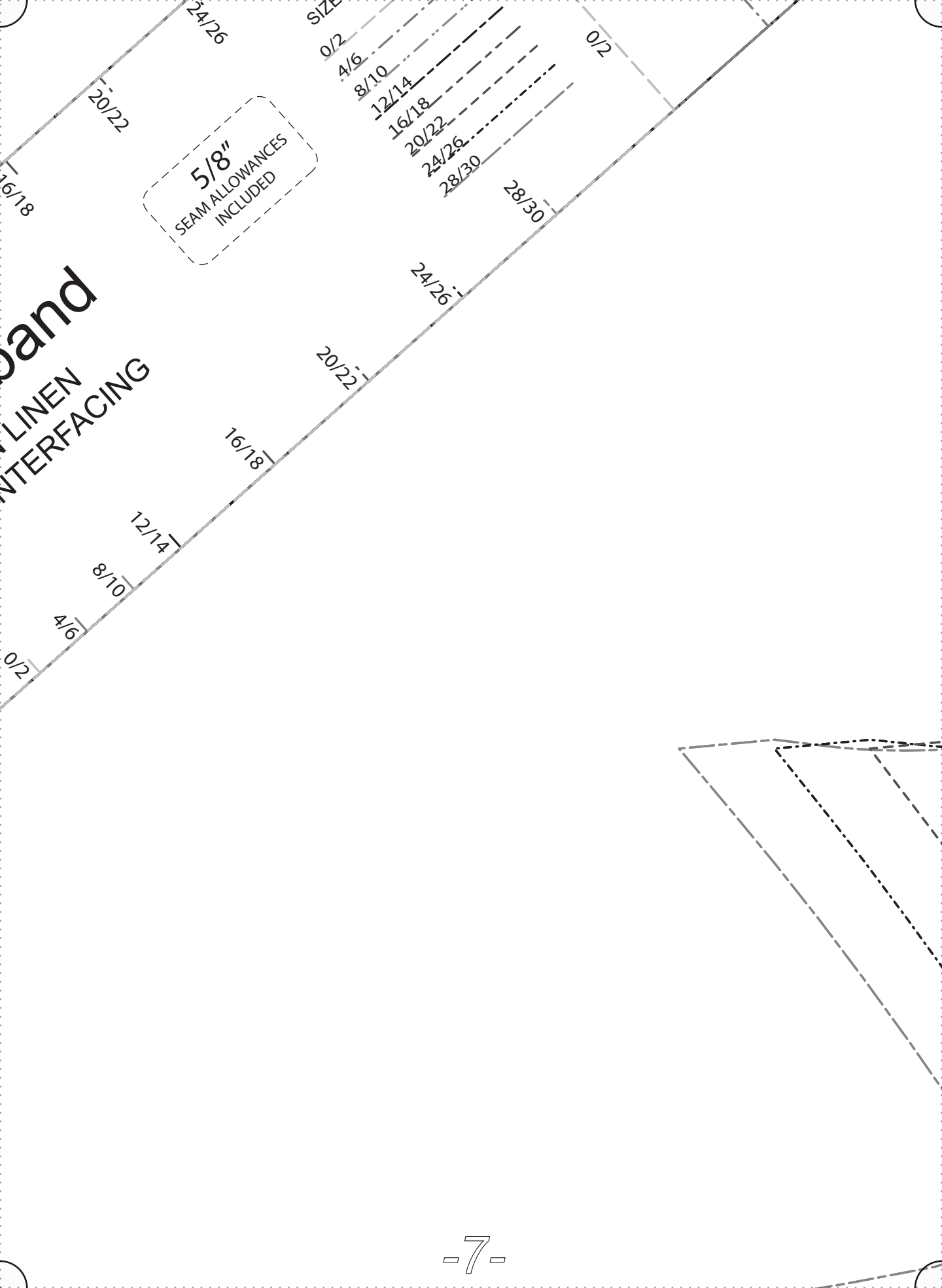


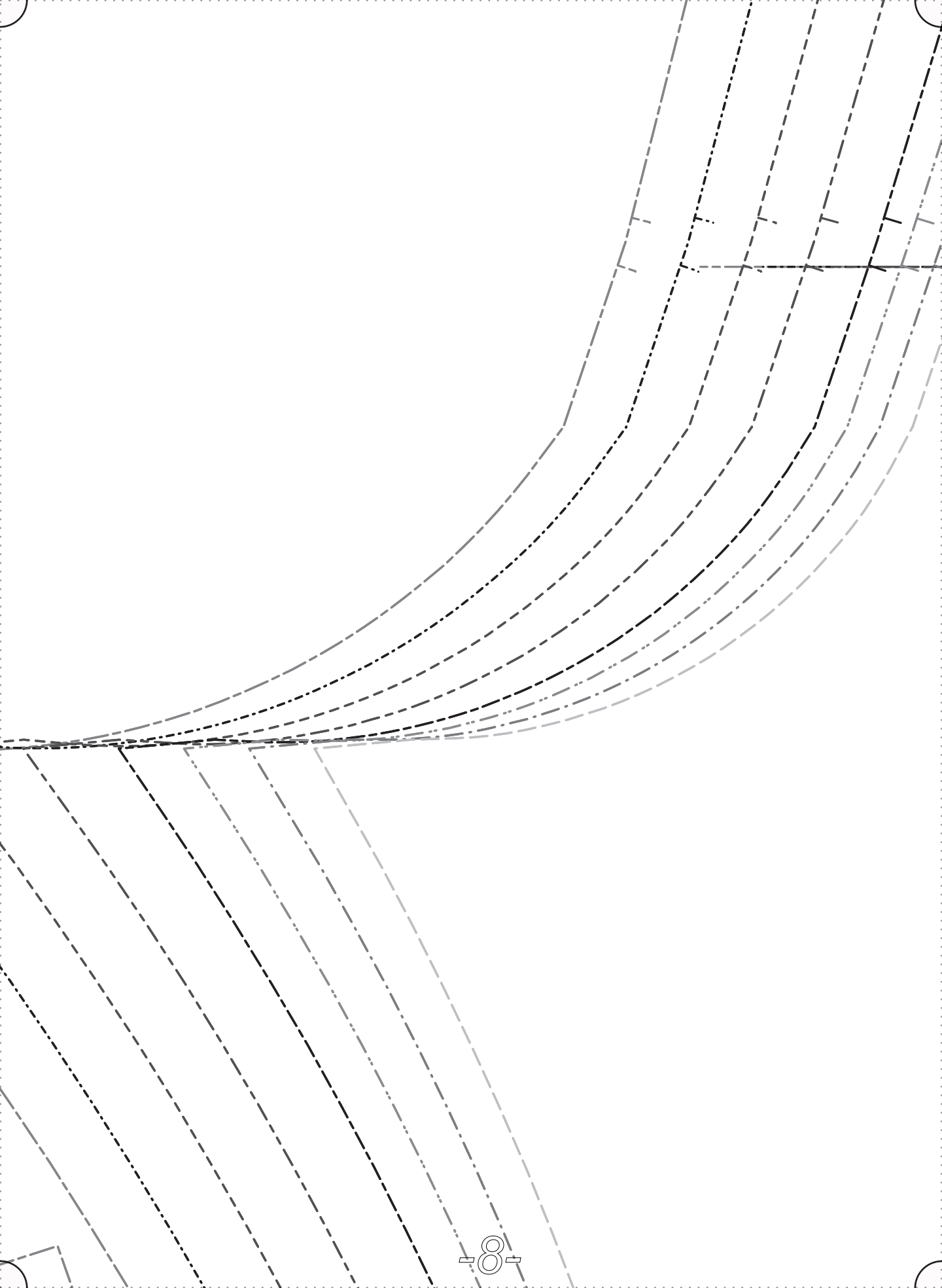




**F/S**  
FABRICS-STORE.COM  
**"LOUISE"**









F|S

FABRICS-STORE.COM

“LOUISE”

C: Back Pant

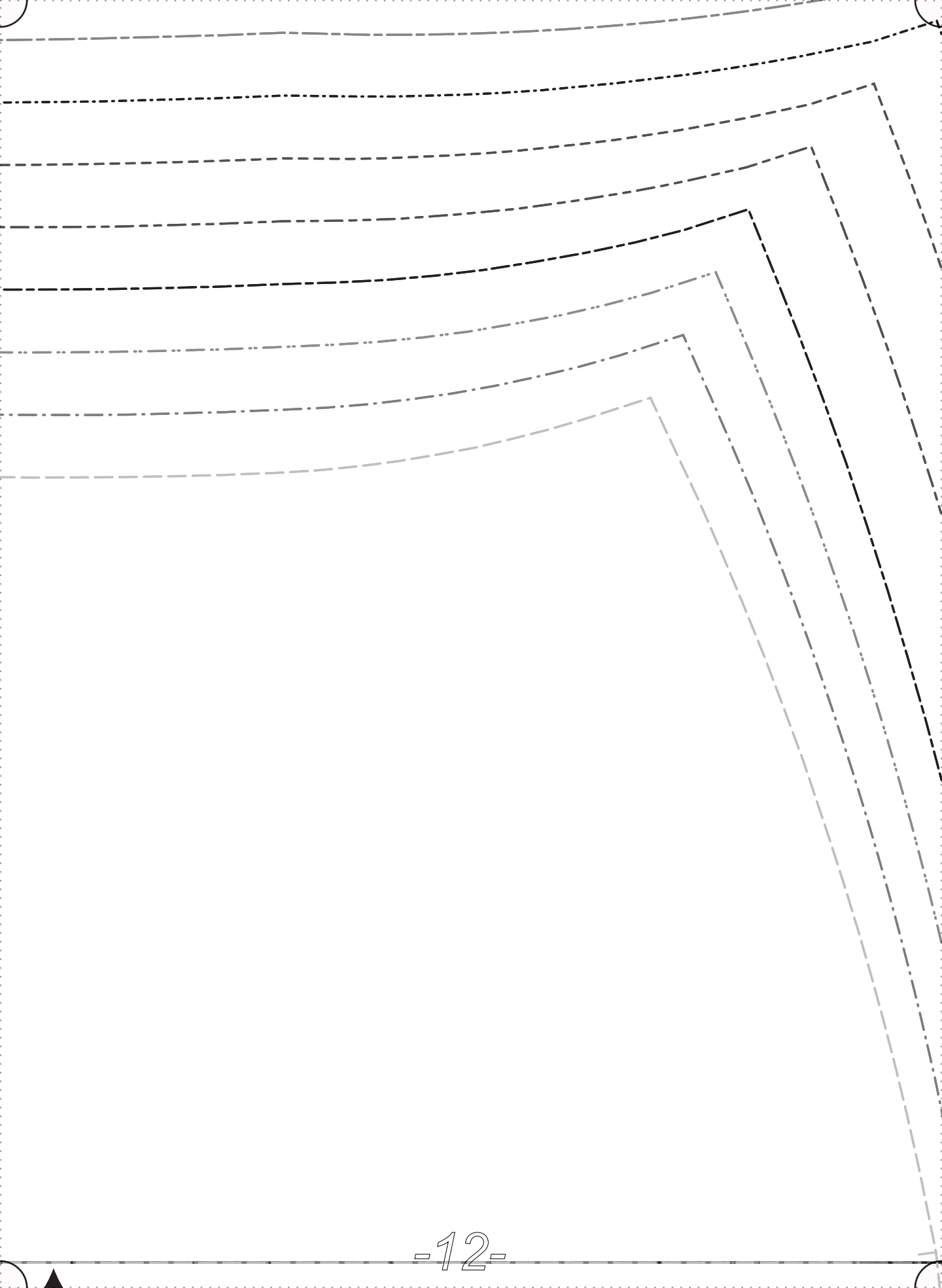
CUT 2 IN LINEN

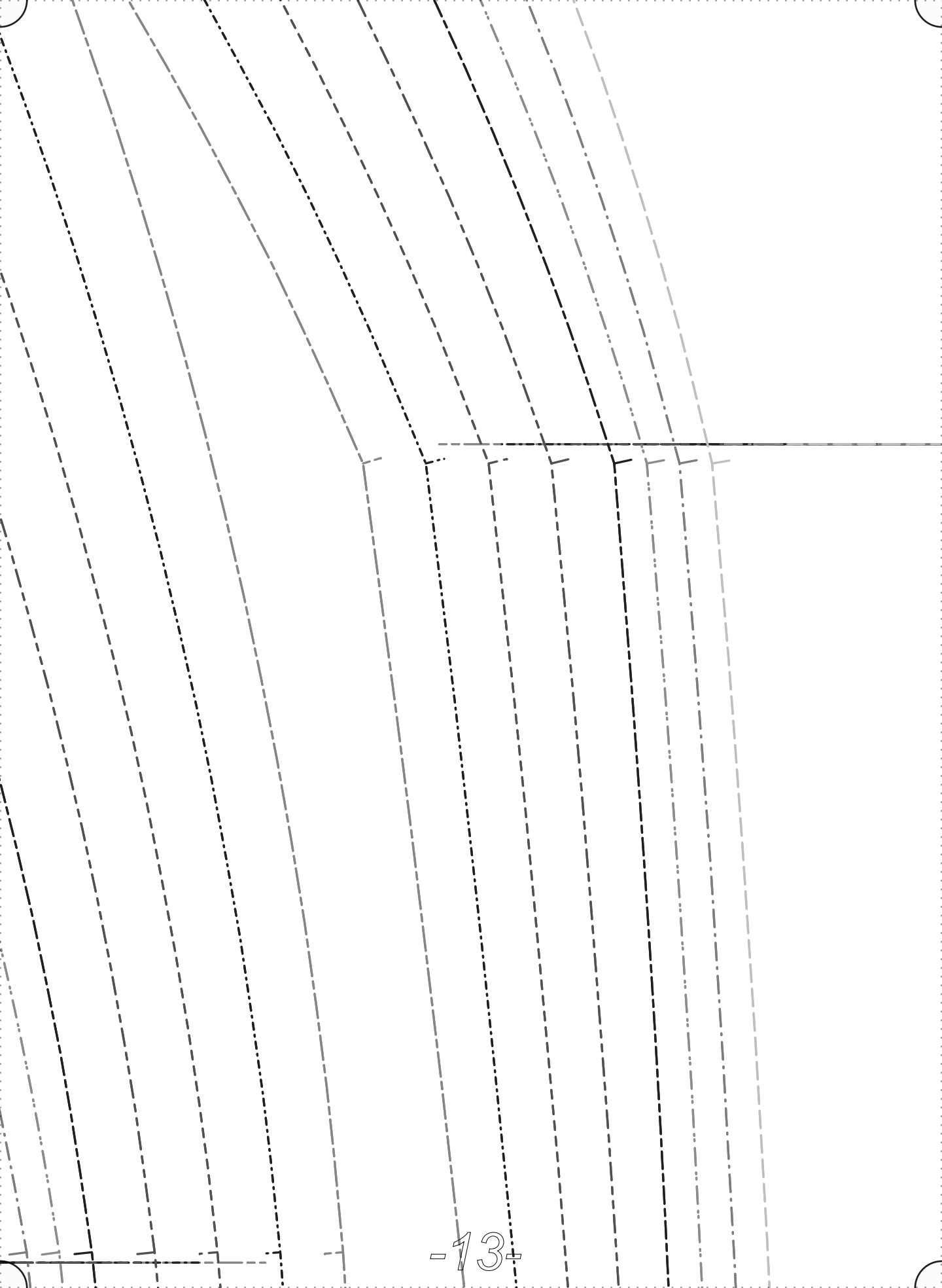
“FACE TO FACE”

**5/8"**  
SEAM ALLOWANCES  
INCLUDED

**1"**  
HEM ALLOWANCES  
INCLUDED







## SIZE LINE TYPES

0/2 \_\_\_\_\_

4/6 \_\_\_\_\_

8/10 \_\_\_\_\_

12/14 \_\_\_\_\_

16/18 \_\_\_\_\_

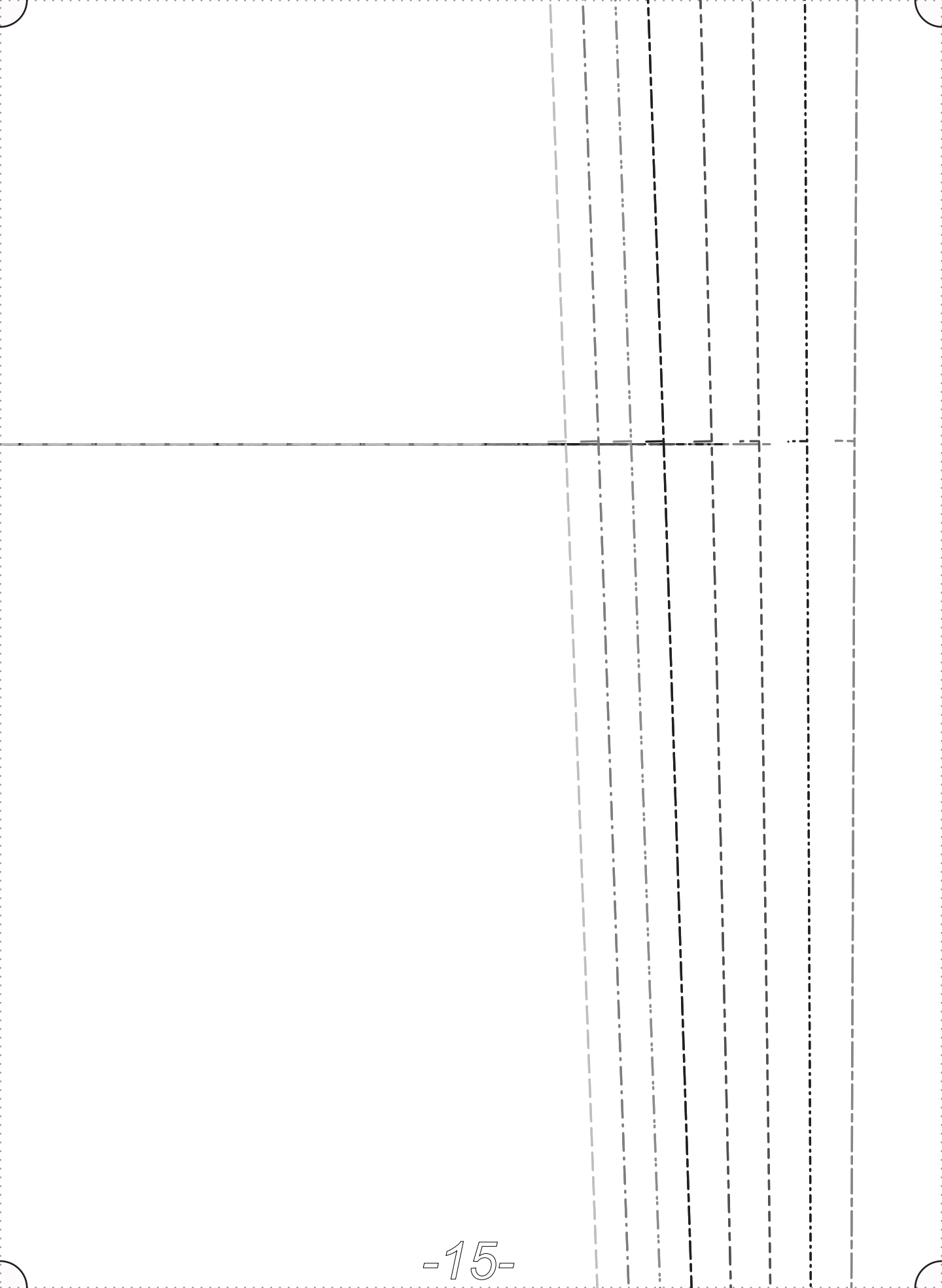
20/22 \_\_\_\_\_

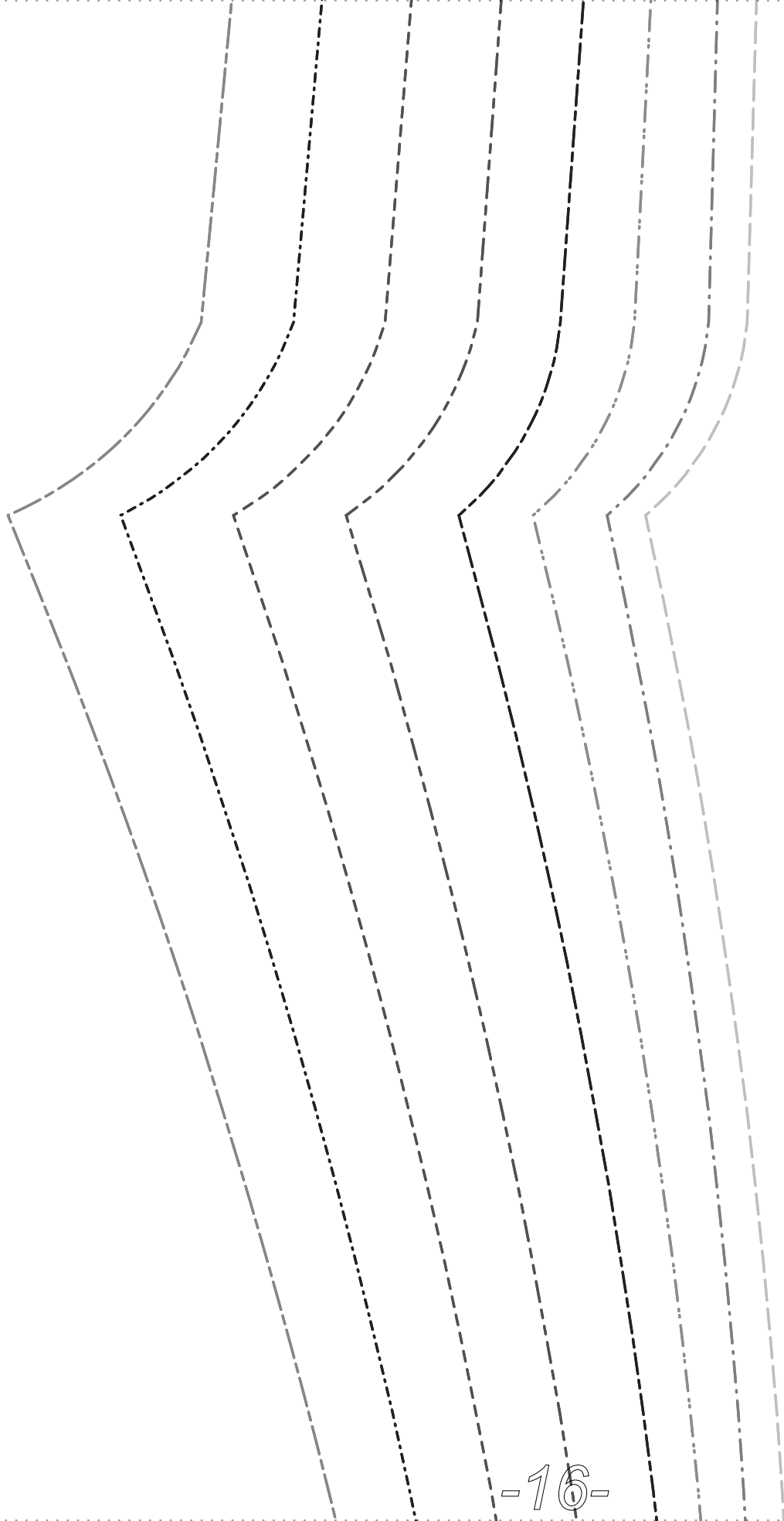
24/26 \_\_\_\_\_

28/30 \_\_\_\_\_

GRAINLINE









FABRICS-STORE.COM

“LOUISE”

B: Front Pant

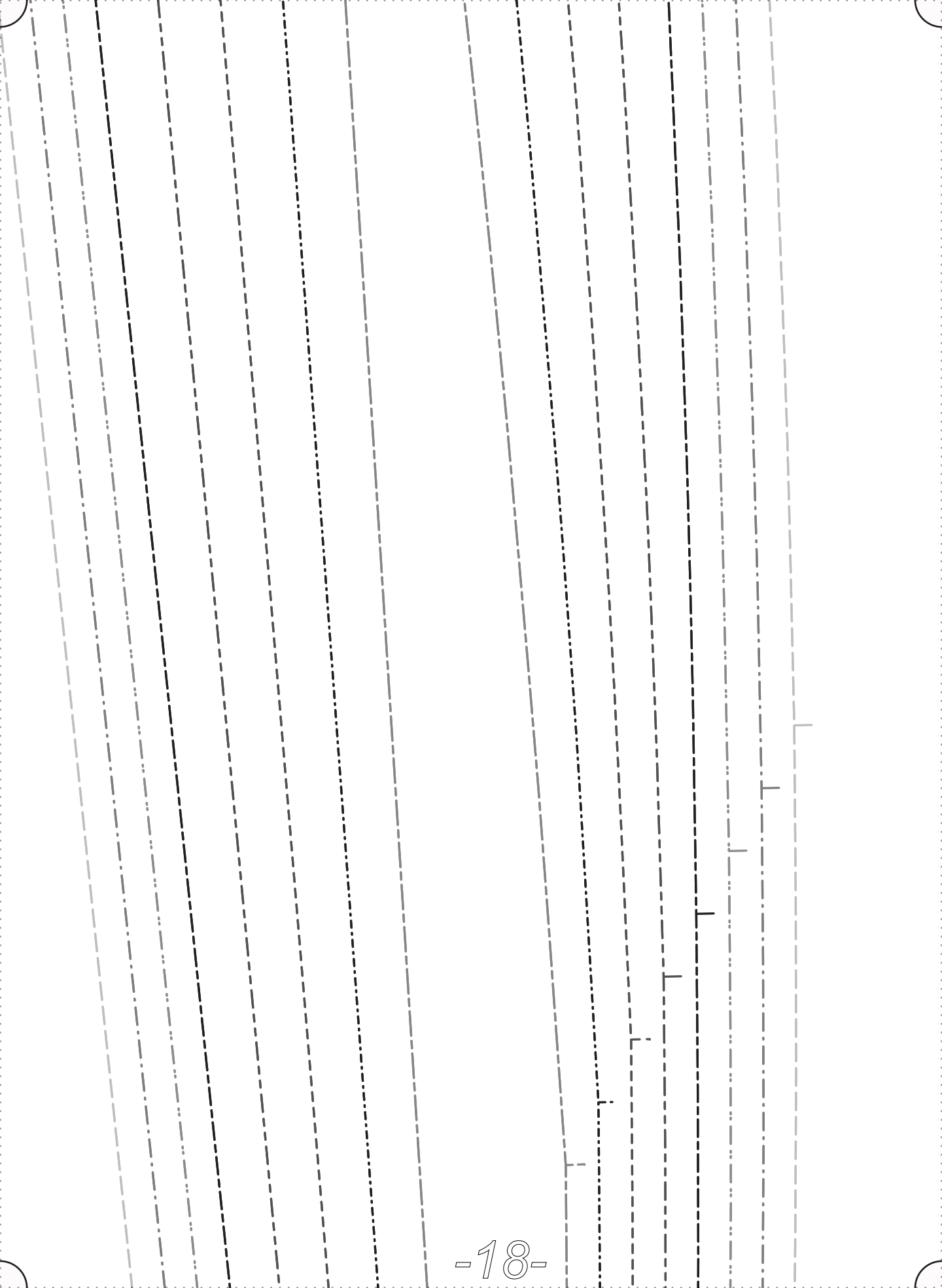
CUT 2 IN LINEN  
“FACE TO FACE”

SIZE LINE TYPES

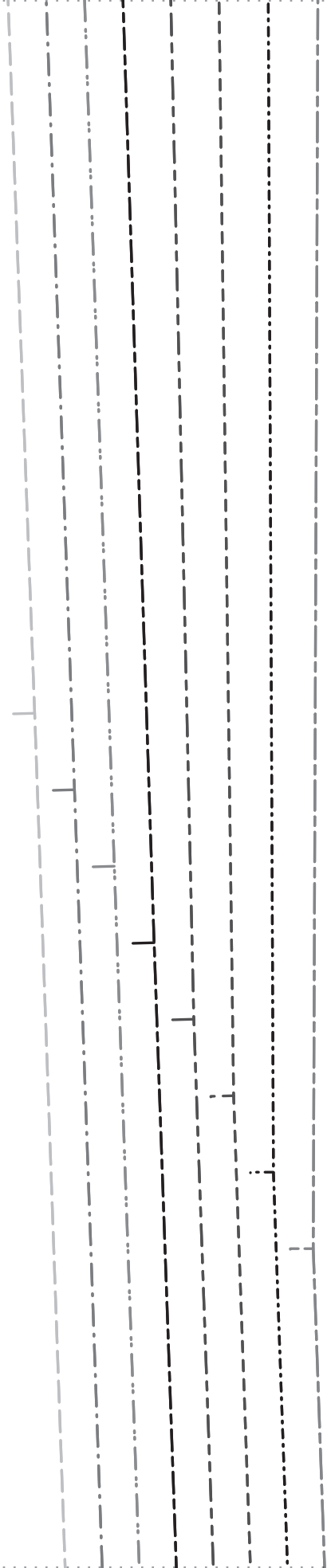
0/2 \_\_\_\_\_  
4/6 \_\_\_\_\_  
8/10 \_\_\_\_\_  
12/14 \_\_\_\_\_  
16/18 \_\_\_\_\_  
20/22 \_\_\_\_\_  
24/26 \_\_\_\_\_  
28/30 \_\_\_\_\_

5/8"  
SEAM ALLOWANCES  
INCLUDED

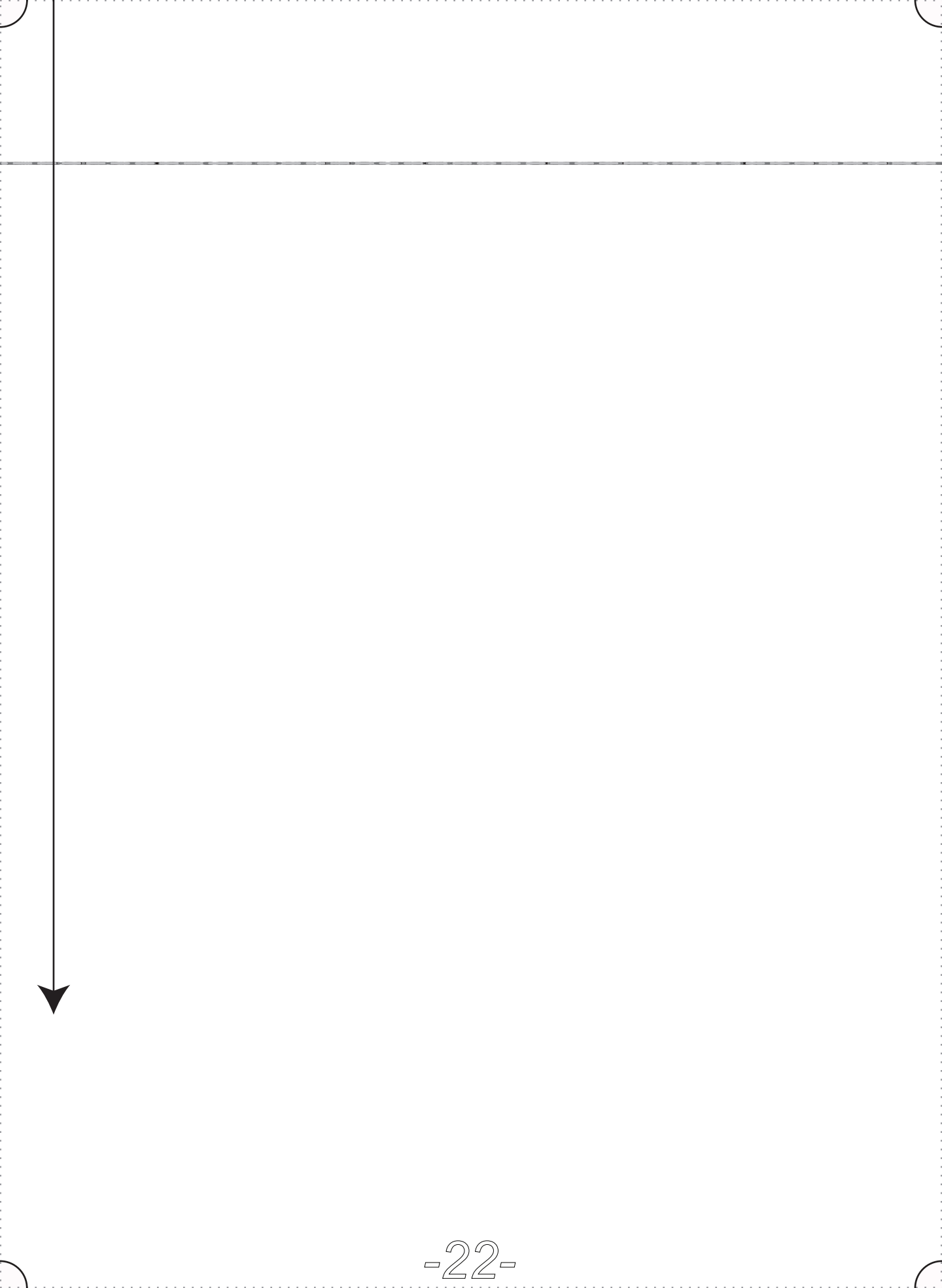
1"  
HEM ALLOWANCES  
INCLUDED



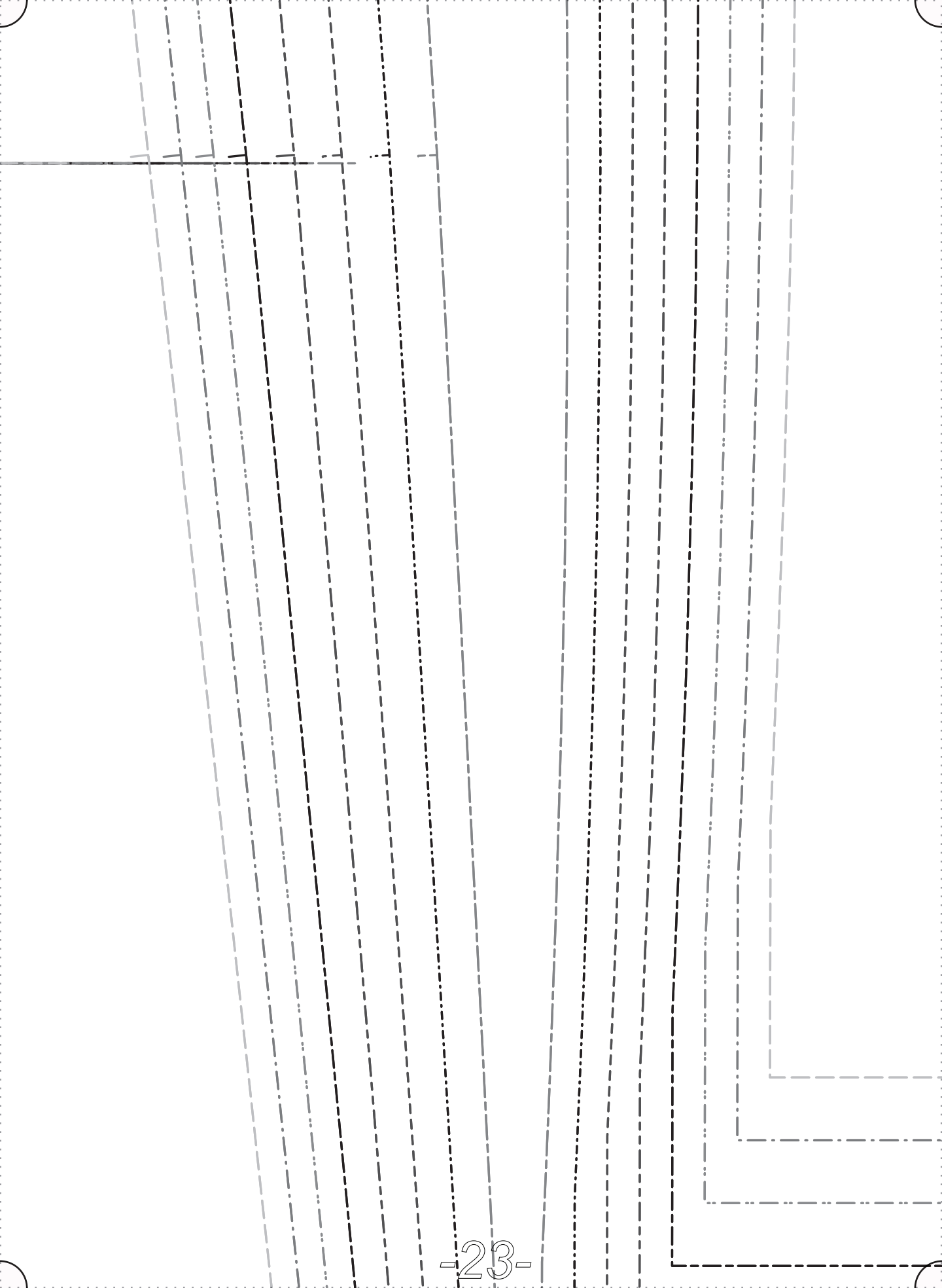














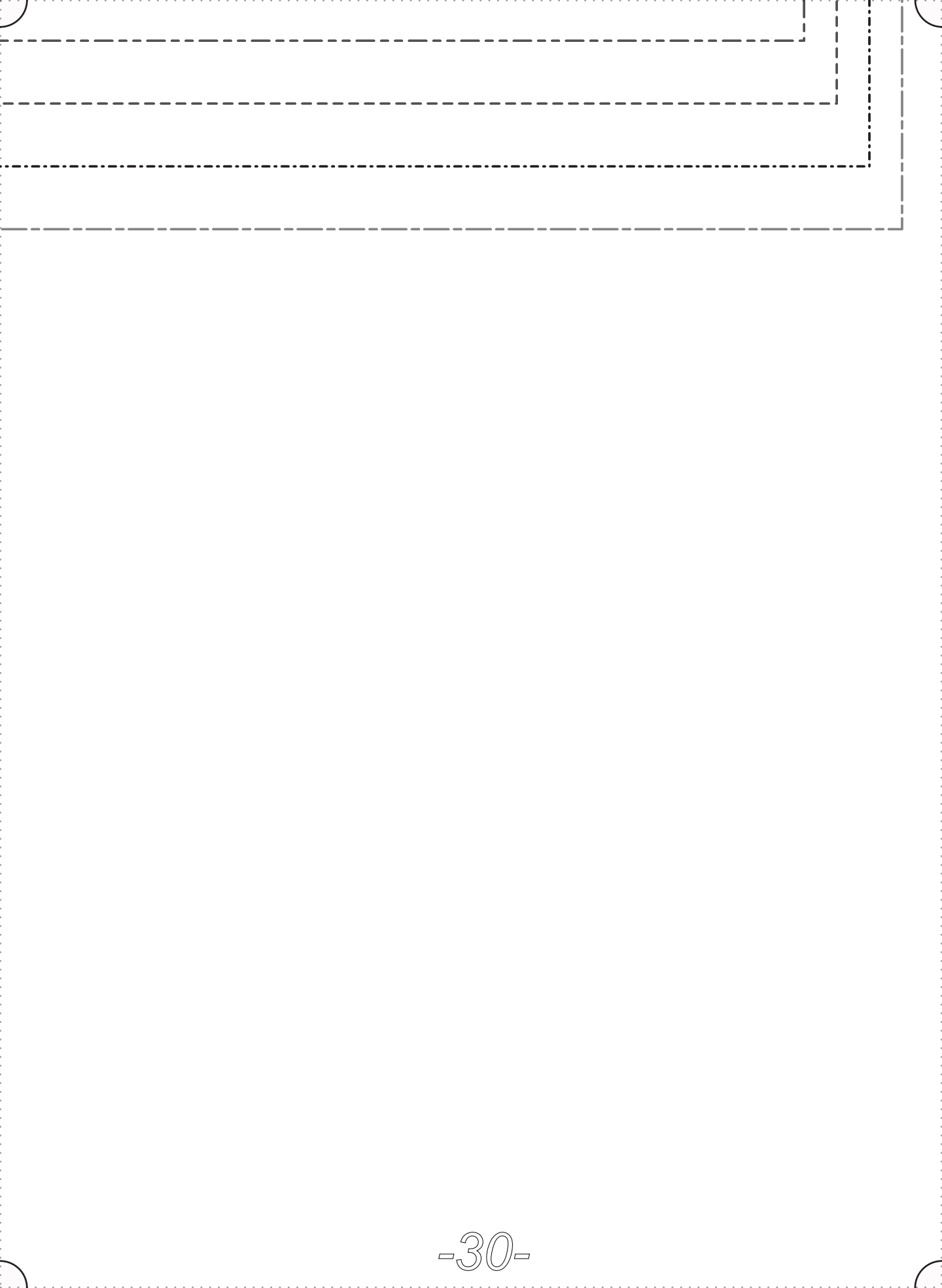








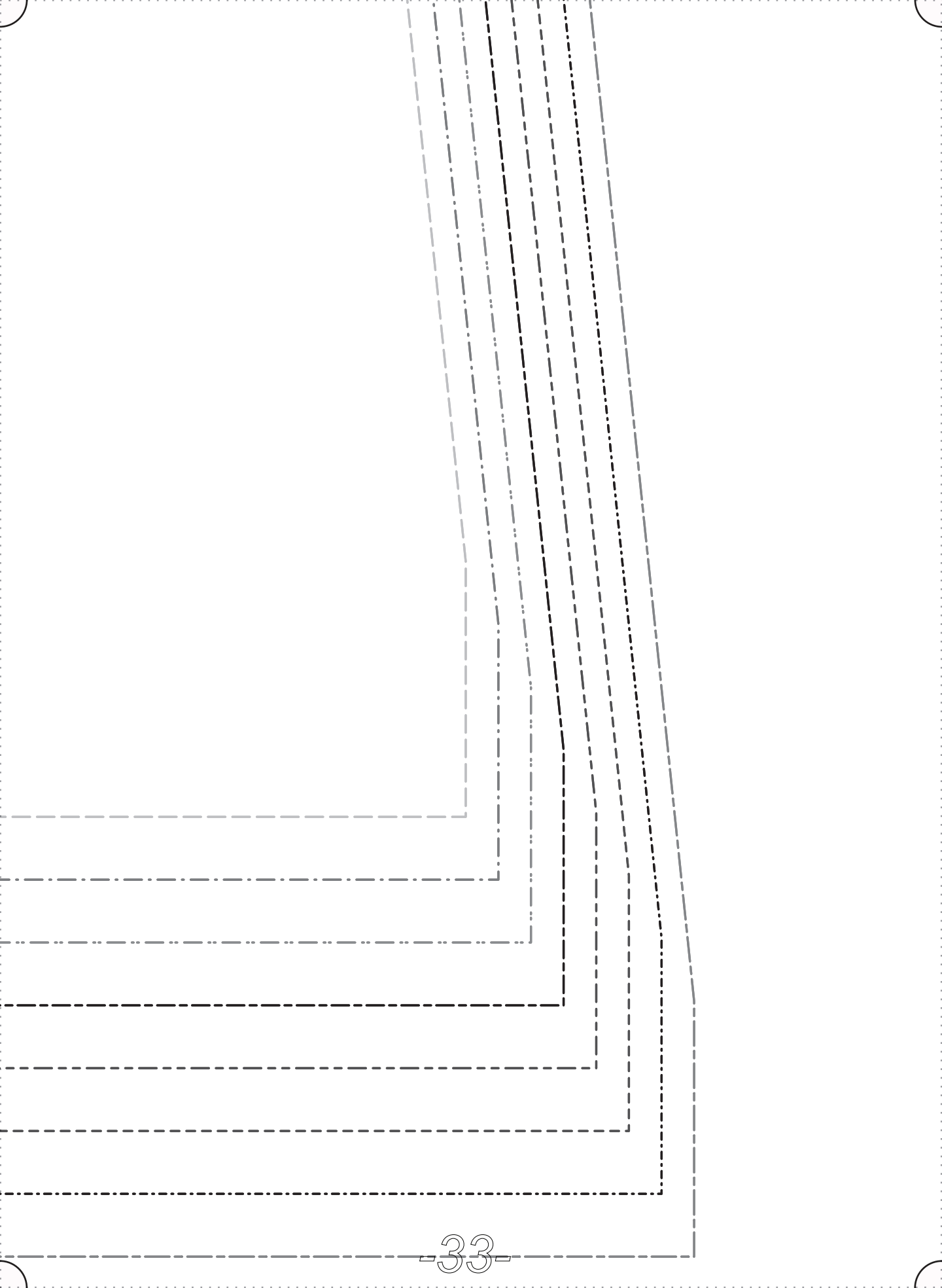












---

# *Thank you*

---

*We work hard on making our patterns beautiful enough to  
meet your standards.*

*If you feel like sharing praise or helpful criticism, please  
send us your comments to [ask@fabrics-store.com](mailto:ask@fabrics-store.com)*