

F|S

FABRICS-STORE.COM

*Our linen is nothing short of addicting*

# LOIS PANTS



## PAPERBAG STYLE

*With their looser fit, these paperbag pants look gorgeous when styled with more fitted tops for balanced proportion to show off the waist detail!*

Available in Ladies Sizes 0/2 to 28/30

866.620.2008 ASK@FABRICS-STORE.COM FABRICS-STORE.COM

---

MASHA IS WEARING IL019 DOVE SOFTENED - 100% LINEN - MIDDLE (5.3 OZ/YD<sup>2</sup>)



Our lovely model Masha is wearing Size 4/6 (Small).

---

# LOIS PATTERN

---

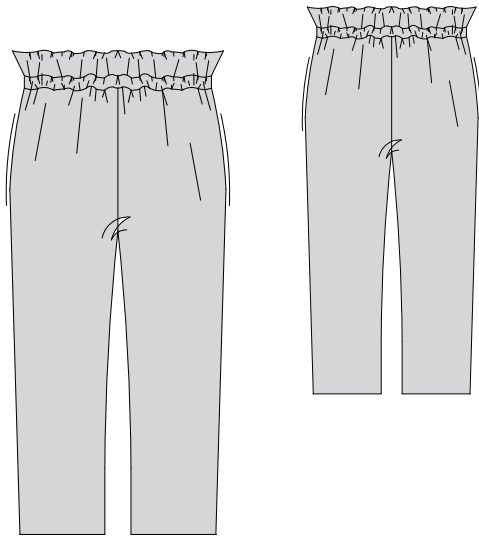
*If you are looking for a trouser style which is both comfortable and feminine, then you'll love our high waisted pants with a beautiful paperbag effect around the waist. They are like your favorite pull-on trousers, only prettier.*

*Sized for ladies 0/2 to 28/30*

*Simple step-by-step instructions on our blog  
The Thread @ Fabrics-Store.com*

# PATTERN DETAILS

## #FABRICSSTORELOISPATTERN



## LOIS PATTERN

Ladies Duo Sizes: 0/2 to 28/30

- Elastic waist
- Paperbag styling
- Loose fitting
- Hidden side pockets

## SEWING INSTRUCTIONS

This pattern is featured on our blog “The Thread” at [Fabrics-Store.com](http://Fabrics-Store.com). There you will find step-by-step photo instructions and can ask questions, post comments, or share your progress. Simply visit: [blog.fabrics-store.com](http://blog.fabrics-store.com) and enter “Lois Pattern” in the search box.

## SIZING & YARDAGE

Ladies Size Guide Based on Body Measurements in Inches

Size	0/2 (XS)	4/6 (S)	8/10 (M)	12/14 (L)	16/18 (XL)	20/22 (2X)	24/26 (3X)	28/30 (4X)
Bust	33-34	35-36	37-38	39-40	42-44	46-48	50-52	54-56
Waist	25-26	27-28	29-30	31-32	34-36	38-40	42-44	46-48
Hip	35-36	37-38	39-40	41-42	44-46	48-50	52-54	56-58

Finished Garment Measurements - Approximate in Inches

Size	0/2 (XS)	4/6 (S)	8/10 (M)	12/14 (L)	16/18 (XL)	20/22 (2X)	24/26 (3X)	28/30 (4X)
Waist	42	44	46.5	49	53	57	61.5	66
Hips	44	46	48.5	51	55	59	63.5	68

Estimated Yardage - 54" Width Linen

Size	0/2	4/6	8/10	12/14	16/18	20/22	24/26	28/30
Yardage*	2 Yards				4.25 Yards			

\*

\*Allow up to 10% extra fabric for shrinkage.

ALL SEAM ALLOWANCES ARE INCLUDED AND NOTED ON THE PATTERN AND IN THE TUTORIAL.

*“Lois” Sewing Pattern*

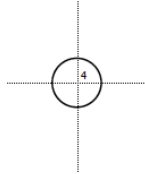
For instructions visit: [blog.fabrics-store.com](http://blog.fabrics-store.com) and enter "Lois Pattern" in the search box

2 Inch  
Square to  
Check Print  
Accuracy

**PRINT ONLY THIS PAGE FIRST TO CHECK SCALE**

IMPORTANT! PRINT AT ACTUAL SIZE, 100%, OR NO  
SCALING.

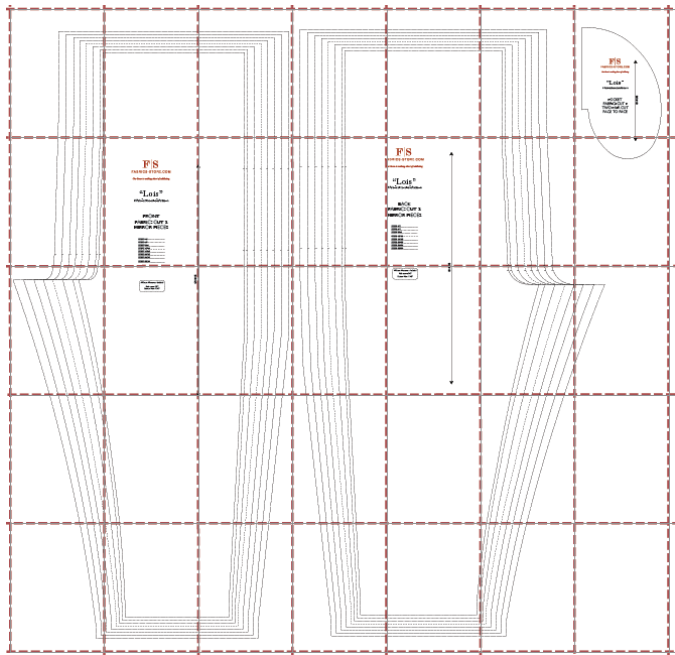
*Formatted for paper sizes A4 and Letter.*



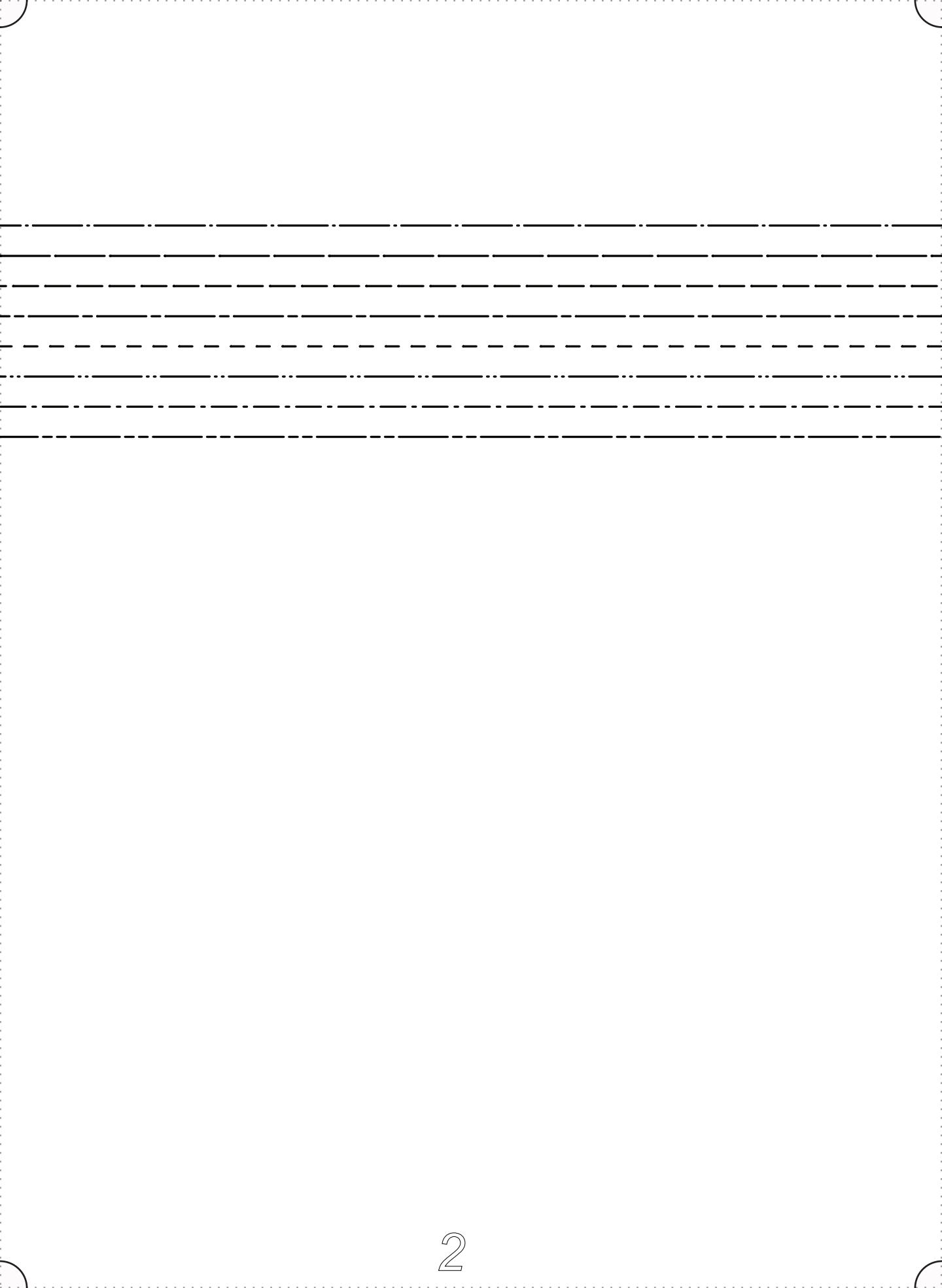
Simply overlap the page margins and  
align the markings in each corner to  
complete the circle and tape in place.

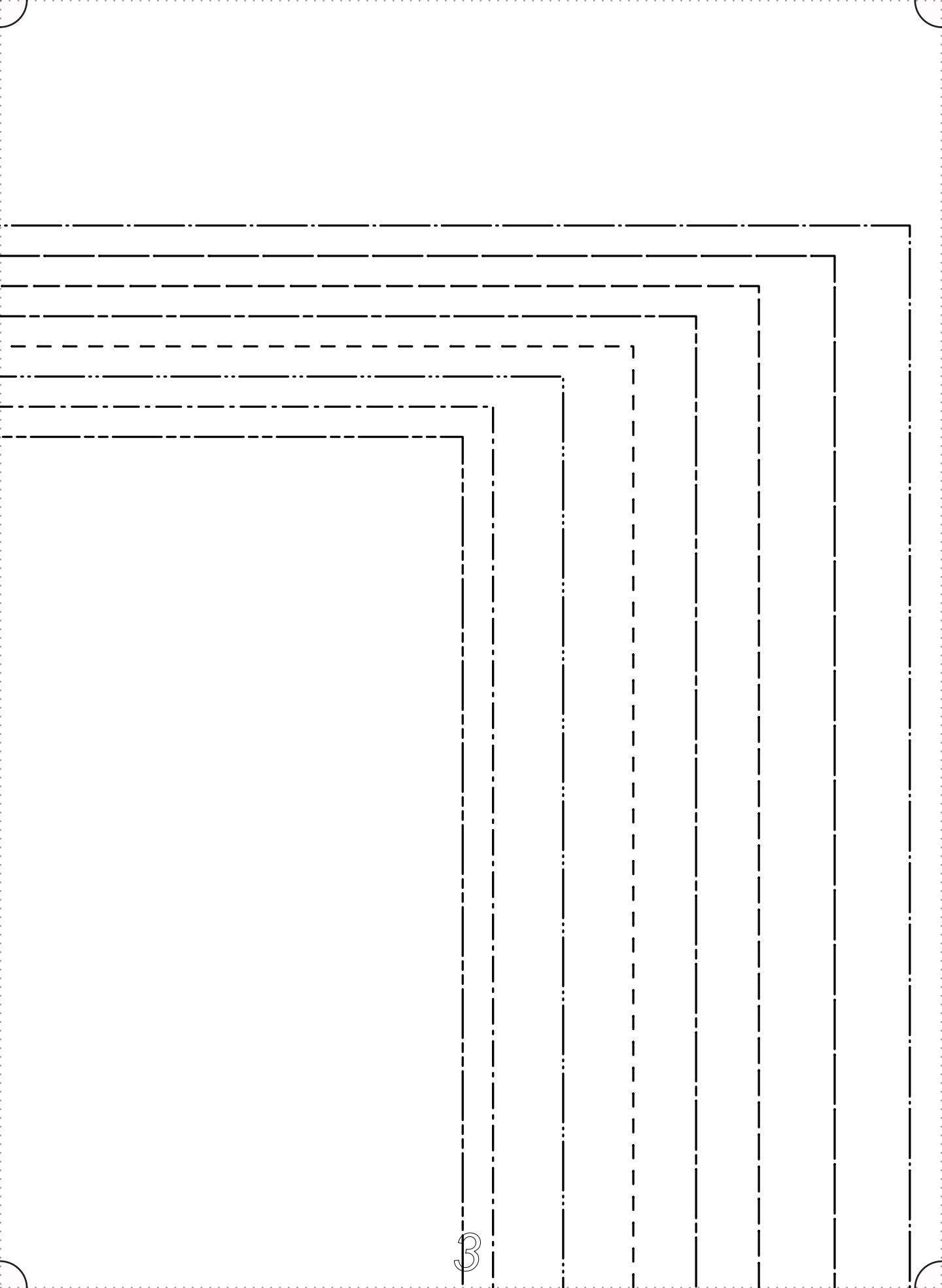
**Layered PDF:**

This pattern has embedded  
layers so you can print all  
sizes or a single size. See  
your .pdf viewers 'Layers'  
menu.



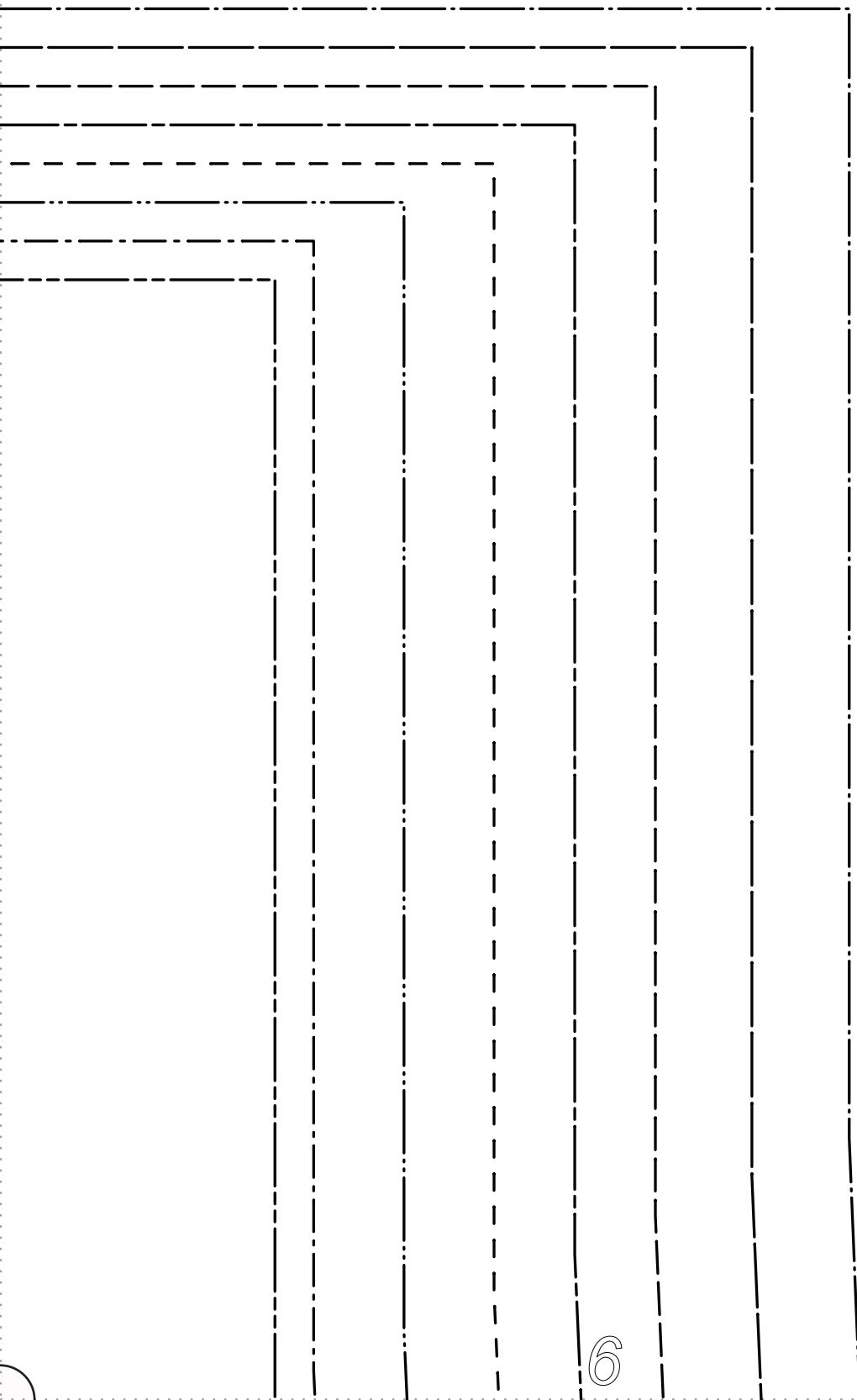














F|S

FABRICS-STORE.COM

*Our linen is nothing short of addicting*

“Lois”

#FabricsStoreLoisPattern

POCKET  
FABRIC: CUT 4  
TWO PAIR CUT  
FACE TO FACE

GRAINLINE





FABRICS-STORE.COM

*Our linen is nothing short of addicting*

“Lois”

#FabricsStoreLoisPattern

FRONT  
FABRIC: CUT 2  
MIRROR PIECES

SIZE 0/2 .....

SIZE 4/6 .....

SIZE 8/10 .....

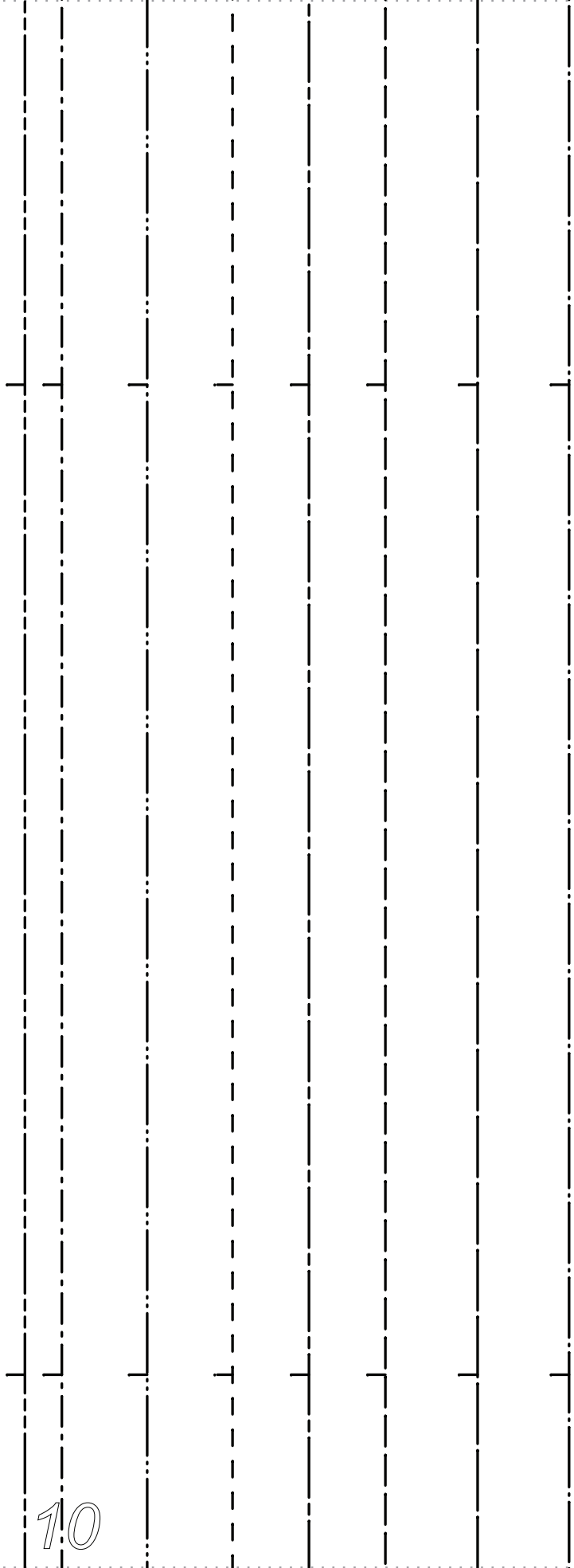
SIZE 12/14 .....

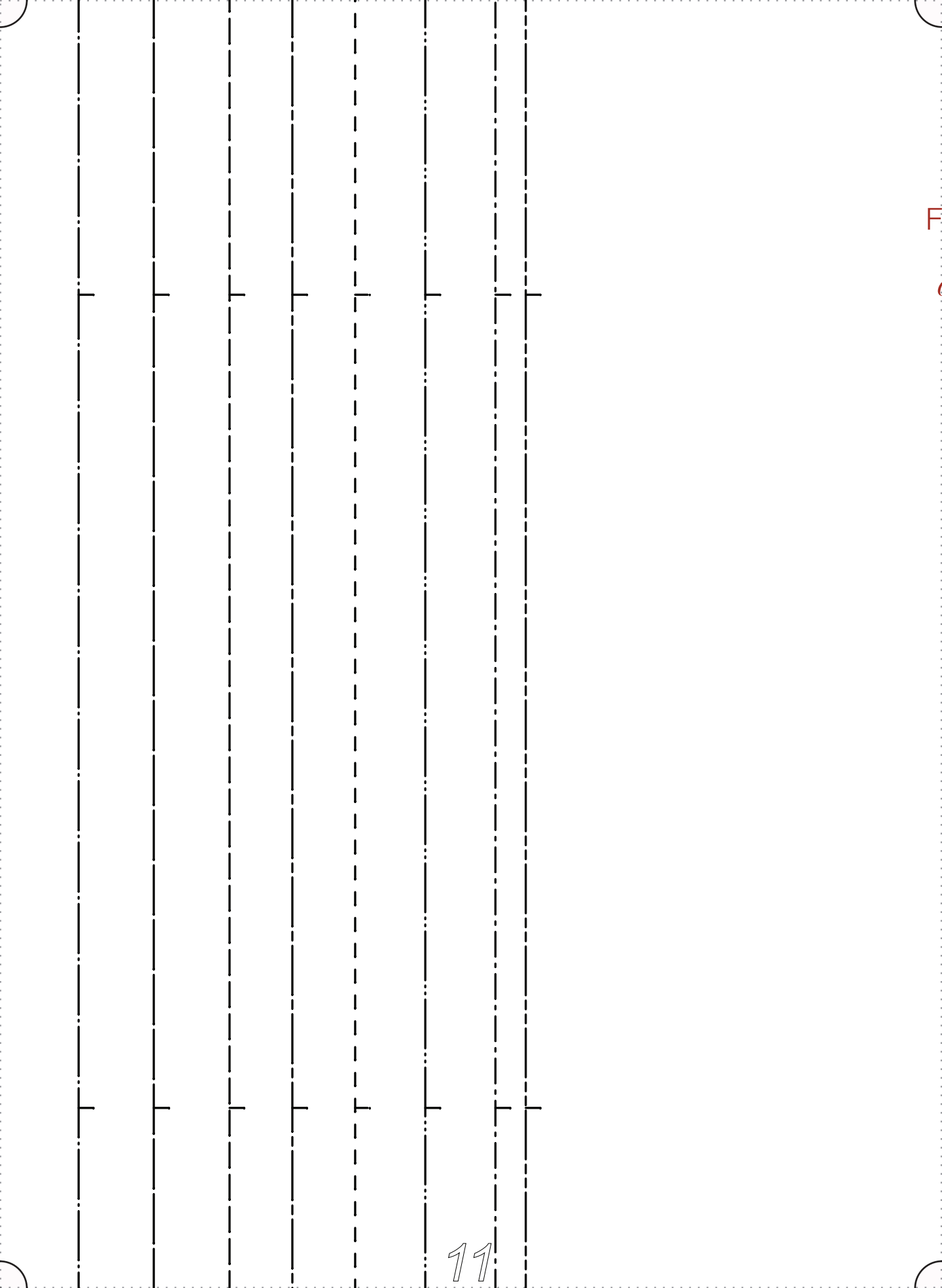
SIZE 16/18 .....

SIZE 20/22 .....

SIZE 24/26 .....

SIZE 28/30 .....







FABRICS-STORE.COM

*Our linen is nothing short of addicting*

“Lois”

#FabricsStoreLoisPattern

BACK  
FABRIC: CUT 2  
MIRROR PIECES

SIZE 0/2 .....

SIZE 4/6 .....

SIZE 8/10 .....

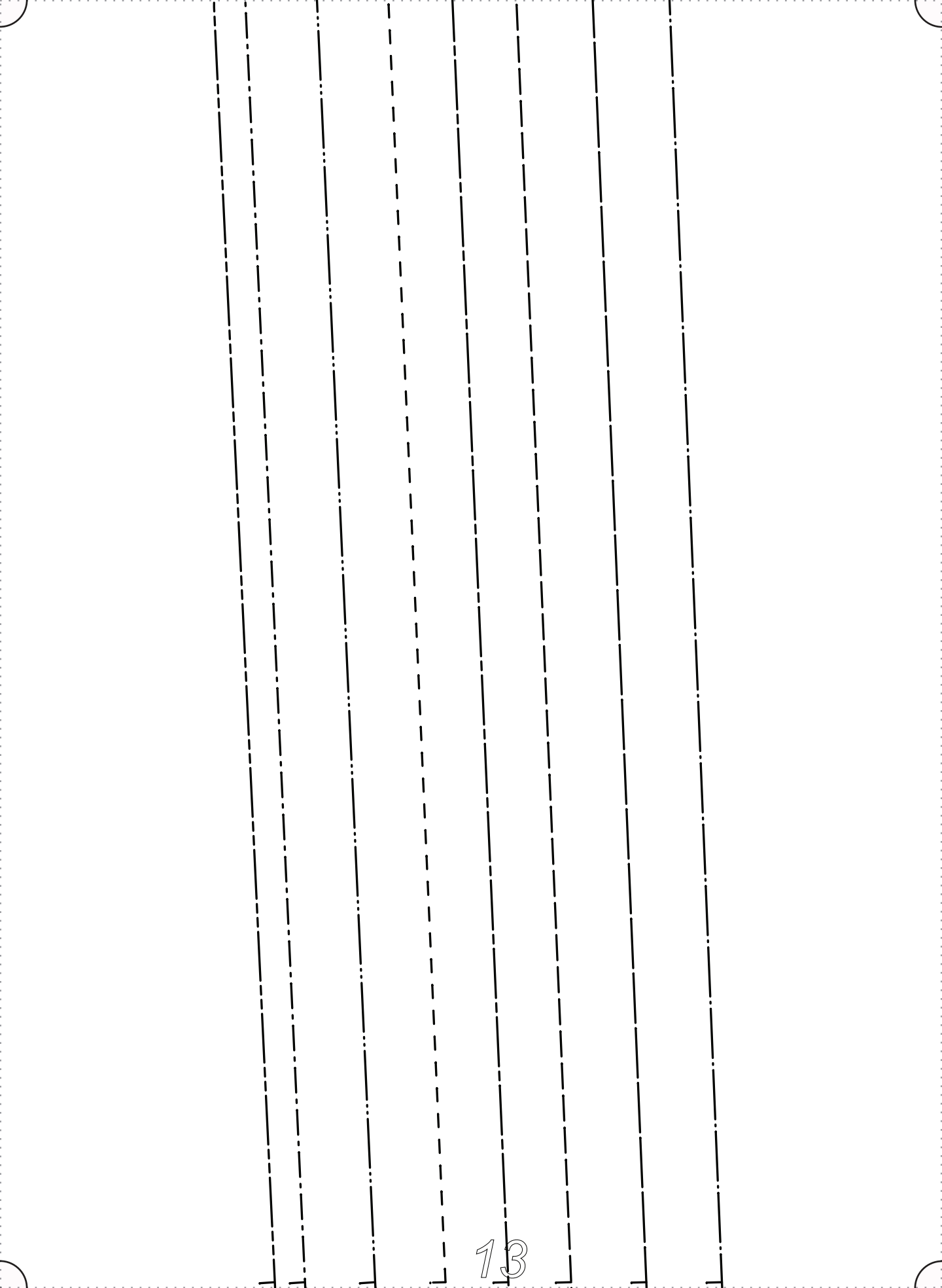
SIZE 12/14 .....

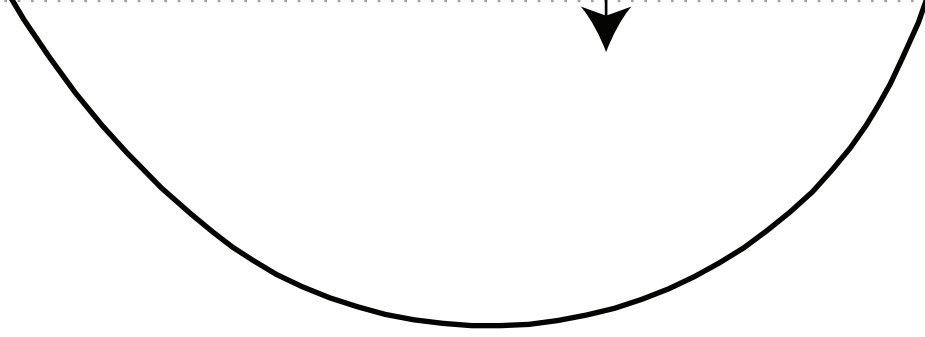
SIZE 16/18 .....

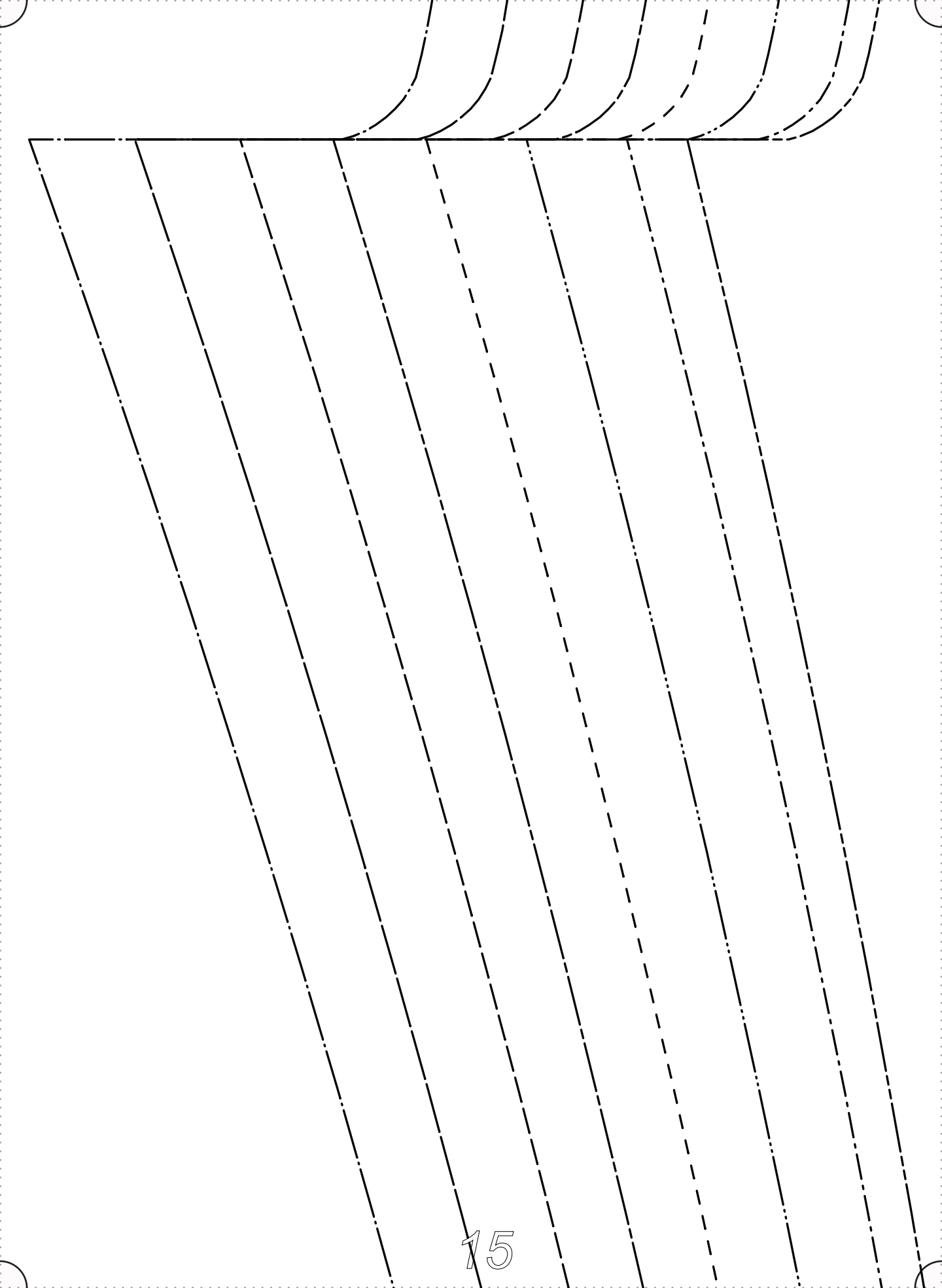
SIZE 20/22 .....

SIZE 24/26 .....

SIZE 28/30 .....







GRAINLINE

**All Seam Allowances Included**

Main seams:  $\frac{3}{8}$ "  
Bottom Hem:  $1 \frac{3}{8}$ "

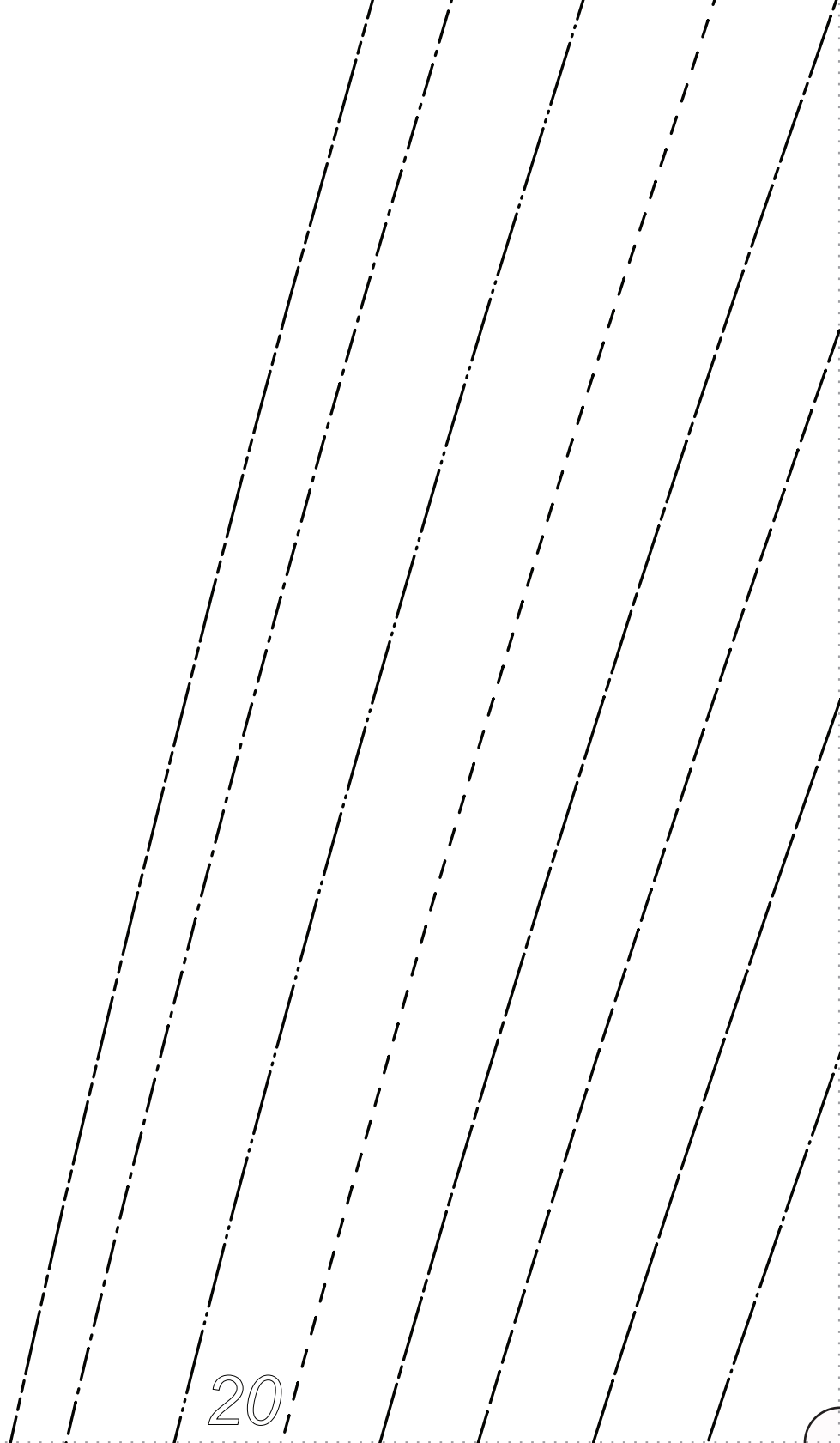
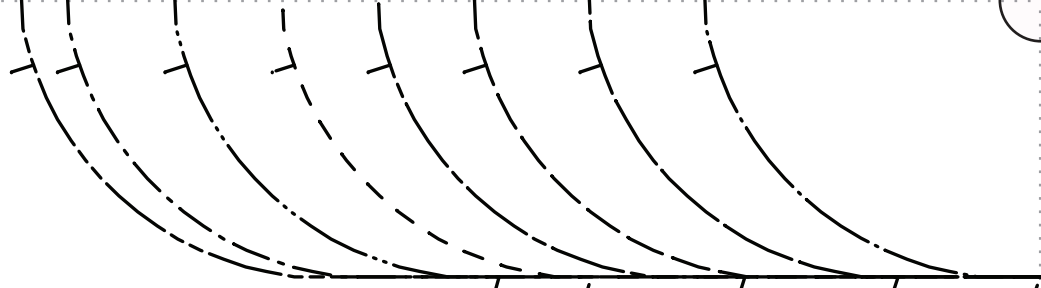


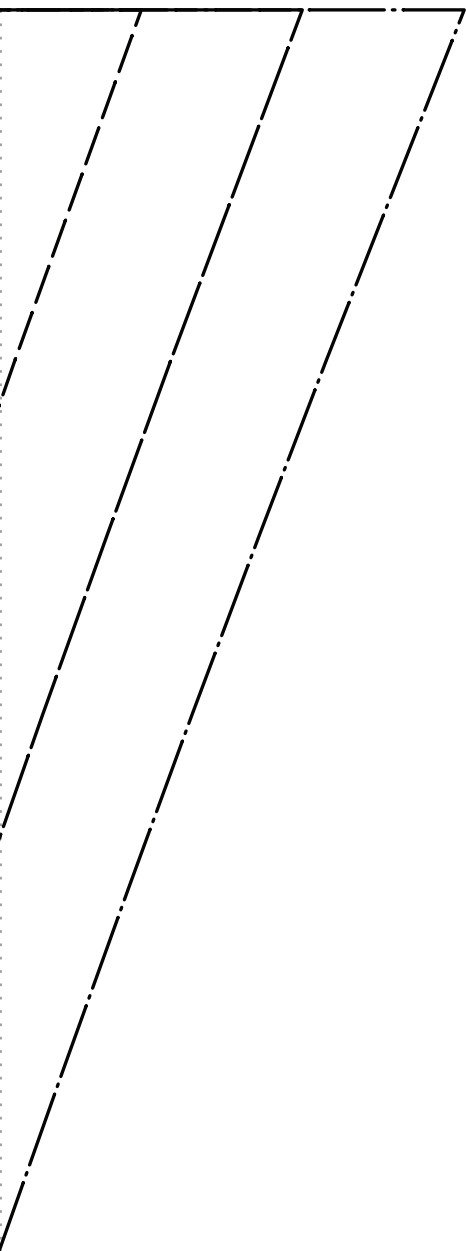


**All Seam Allowances Included**

Main seams: 3/8"  
Bottom Hem: 1 3/8"

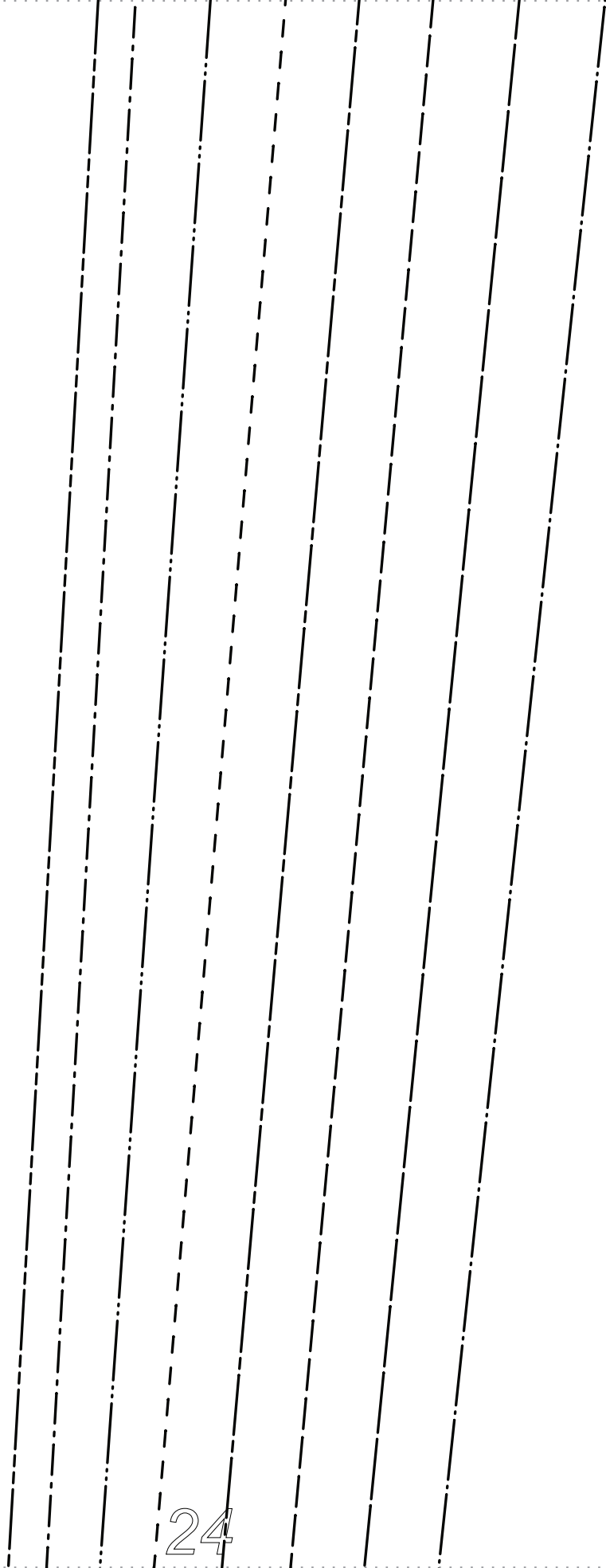
GRAIN↓





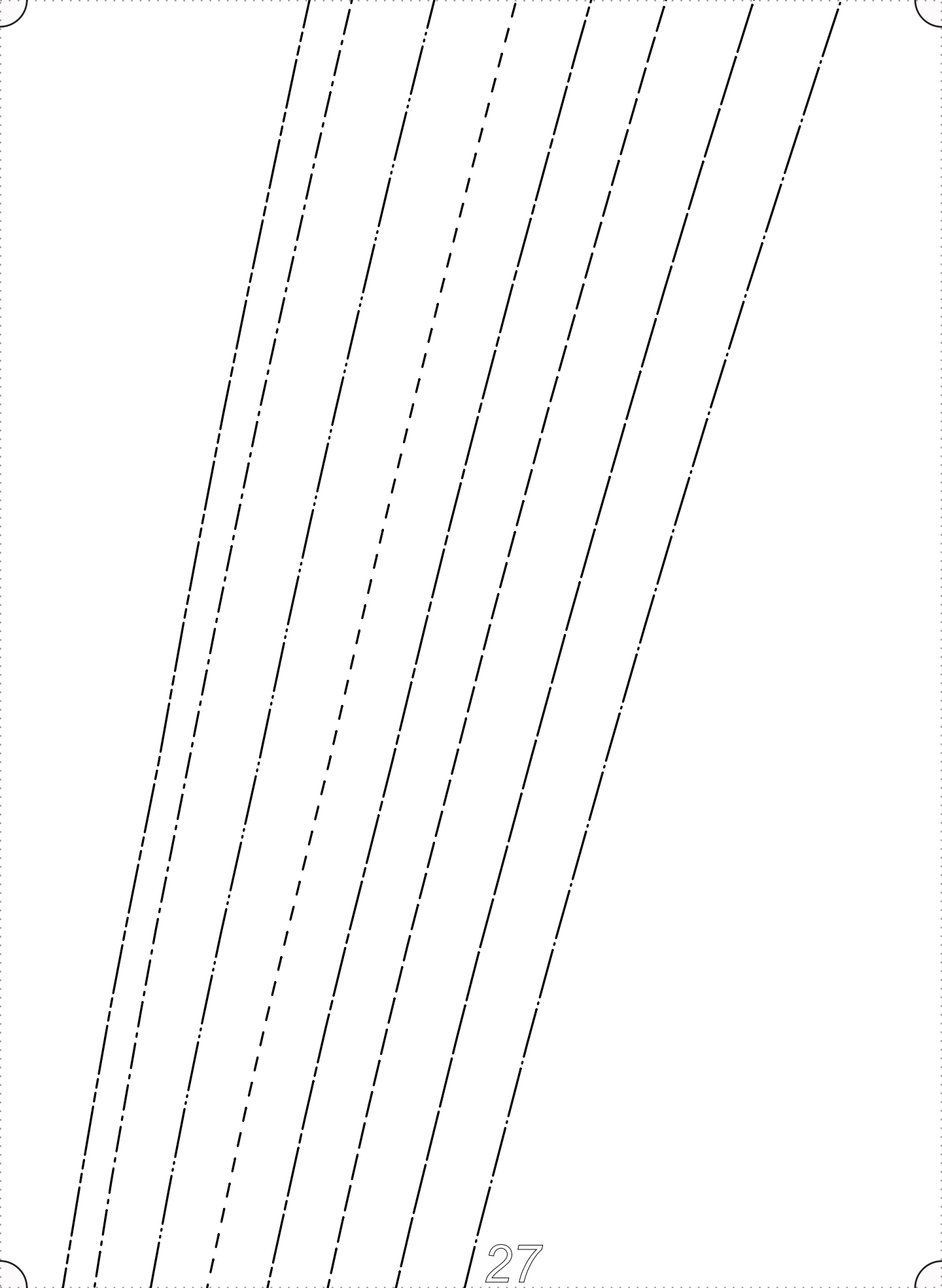






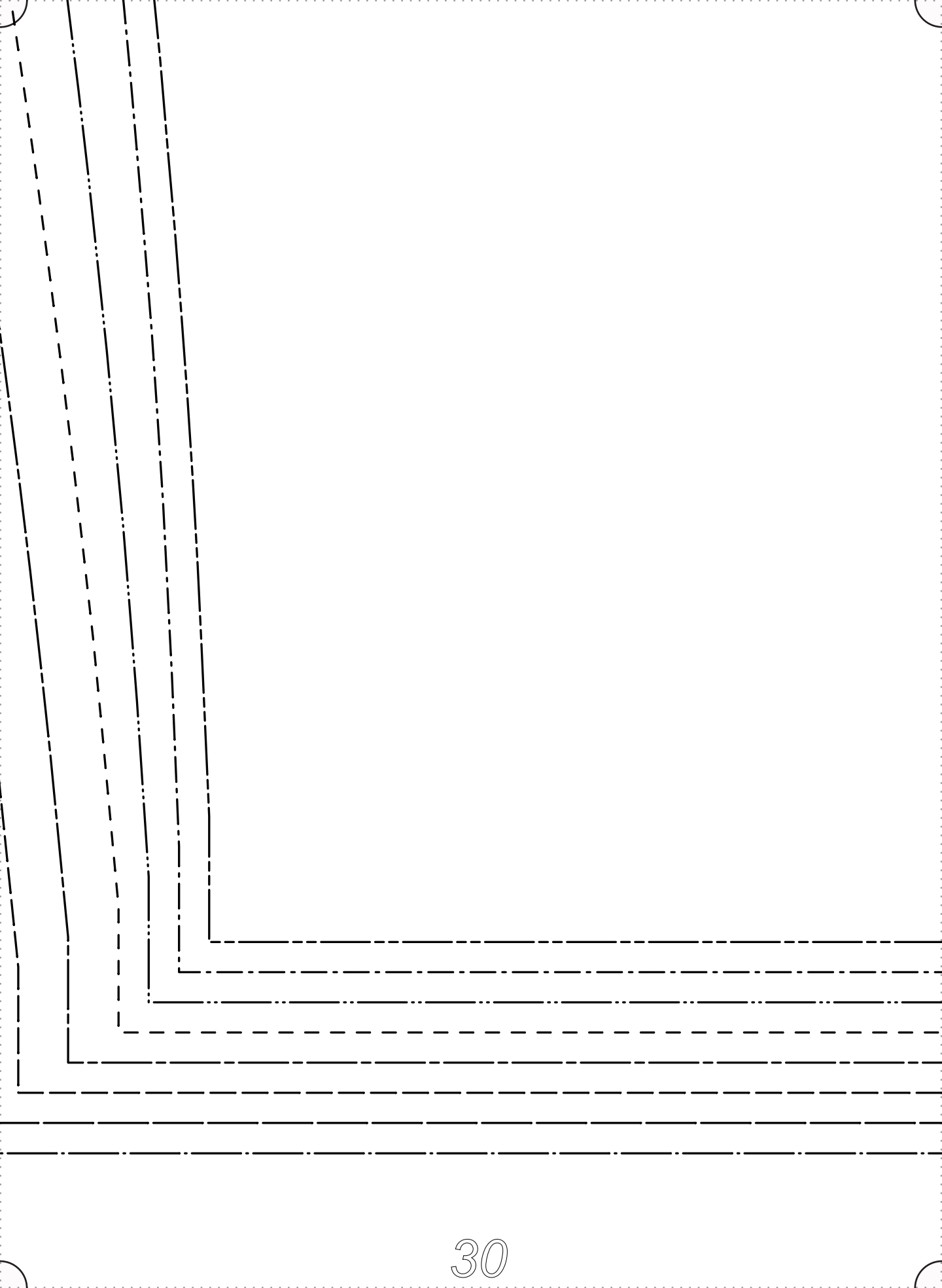


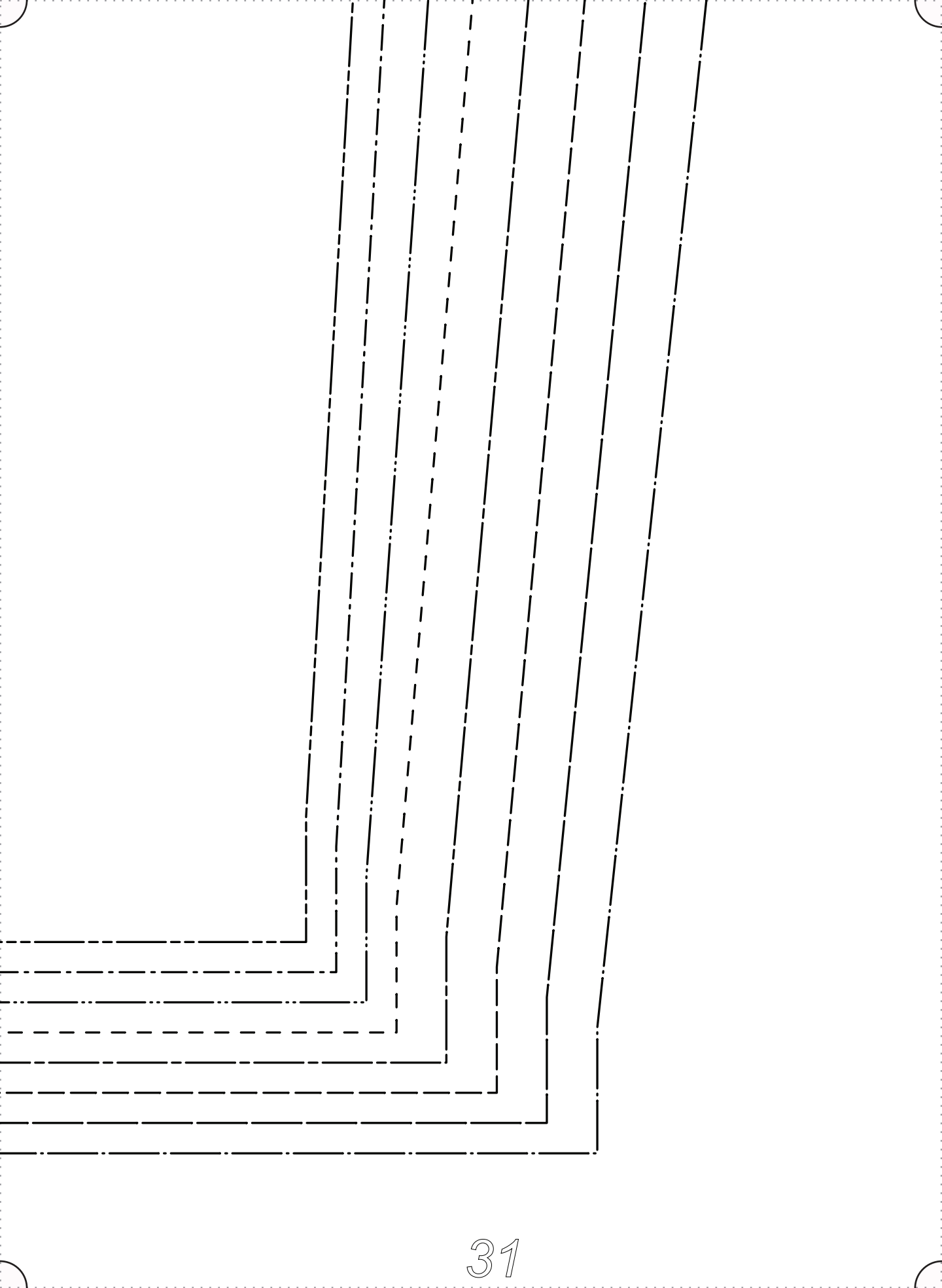


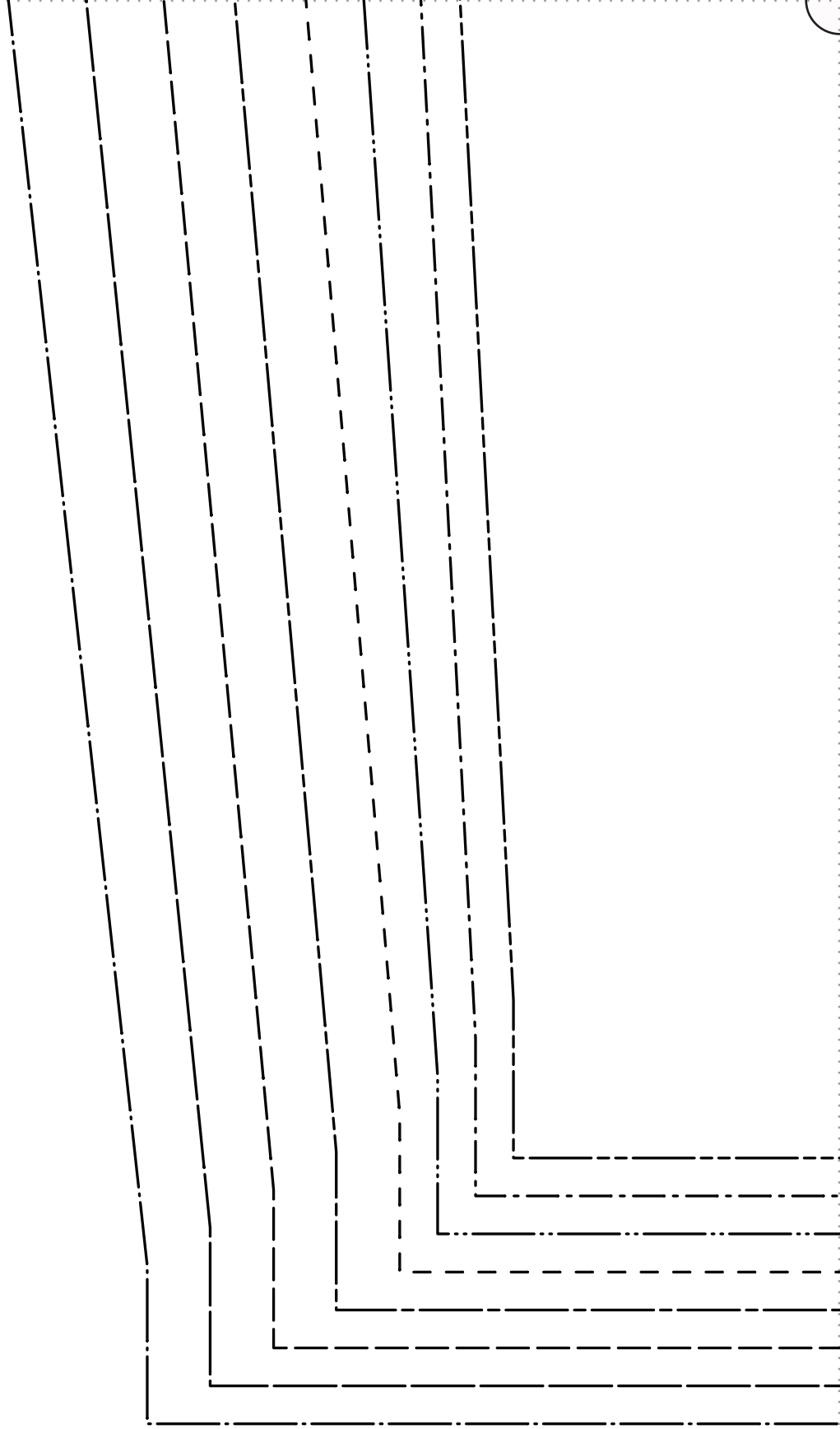


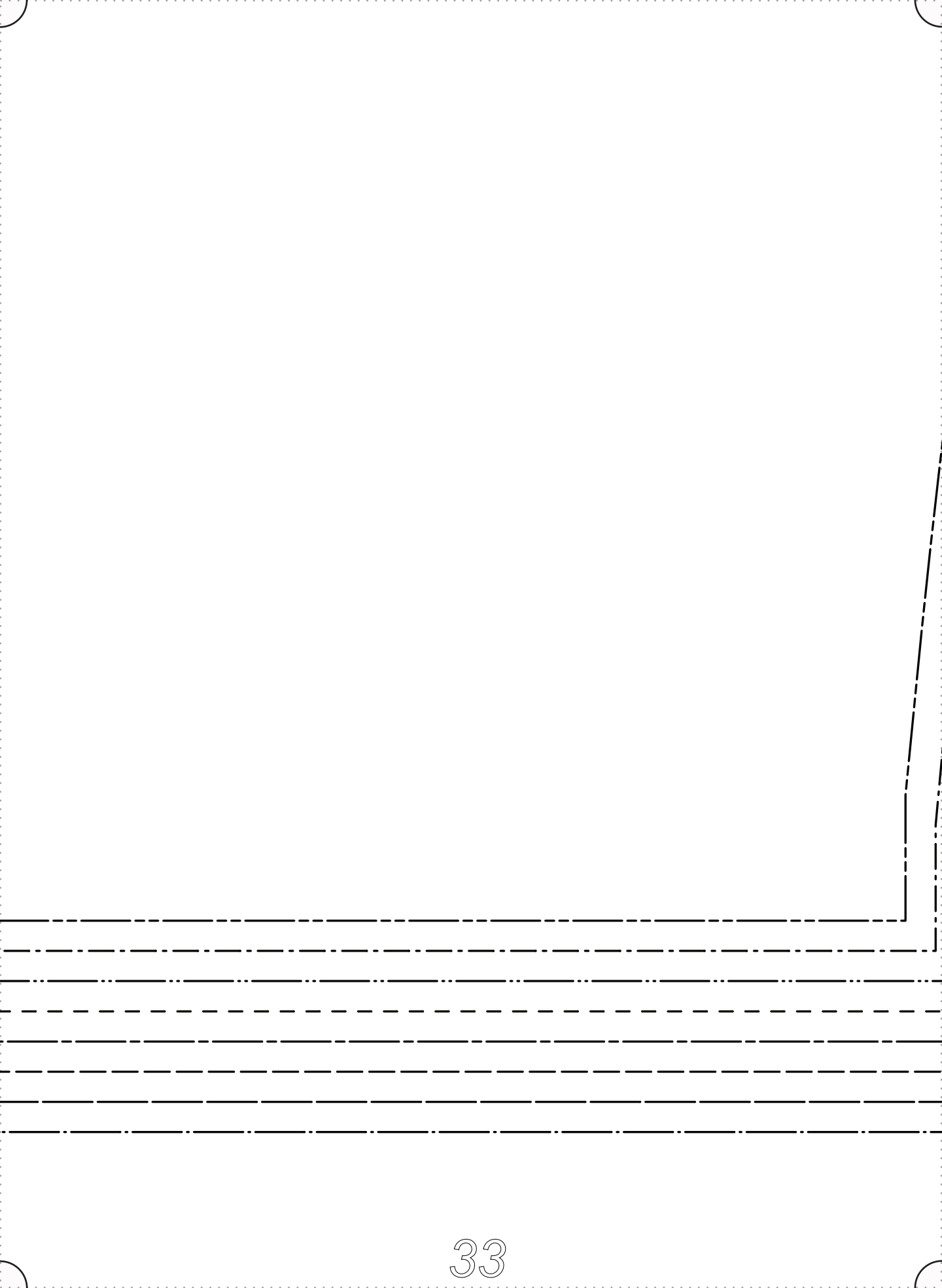


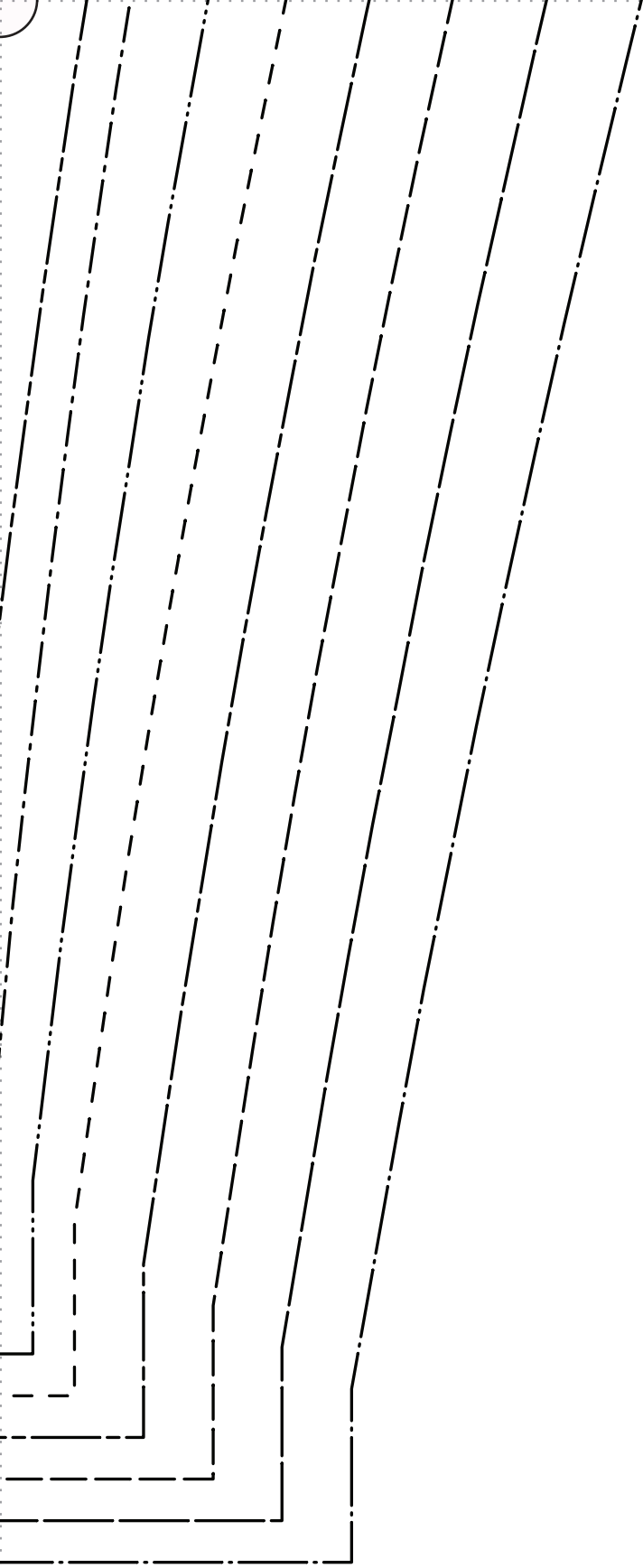














---

# *Thank you*

---

*We work hard on making our patterns beautiful  
enough to meet your standards.*

*If you feel like sharing praise or helpful criticism,  
please send us your comments to [ask@fabrics-store.com](mailto:ask@fabrics-store.com)*