

F|S

FABRICS-STORE.COM

Our linen is nothing short of addicting

LEONOR ROMPER



THE ONE-PIECE WONDER

It's hard not to love rompers, especially in the summer months. The perfect one-piece outfit, it has the comfort of shorts and the styling ease of a dress

Available in Ladies Sizes 0/2 to 28/30

866.620.2008 ASK@FABRICS-STORE.COM FABRICS-STORE.COM

LEONOR PATTERN

Our Leonor pattern is a relaxed button up romper with short dolman sleeves, large pockets and an elasticated waist that can be styled with or without the belt. Cut from our stripy medium weight linen, it is lightweight and breathable, making sure to keep you cool and comfortable all day long.

Sized for ladies 0/2 to 28/30

*Simple step-by-step instructions on our blog
The Thread @ Fabrics-Store.com*

MASHA IS WEARING IL042 90I FS PREMIER FINISH - 100% LINEN (5.1 OZ/YD²)



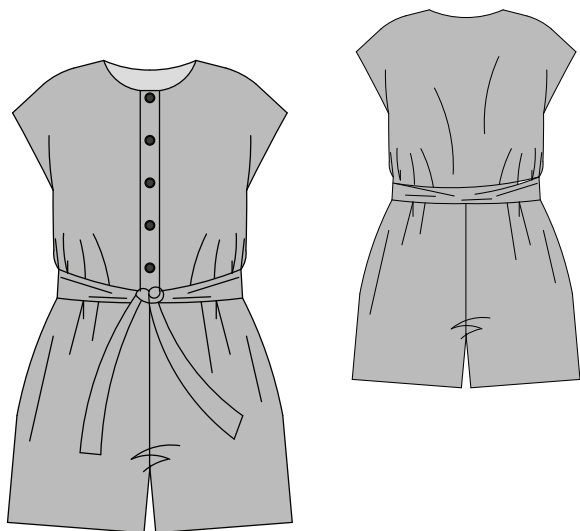
Our lovely model Masha is wearing Size 4/6.

PATTERN DETAILS

#FABRICSSTORELEONORPATTERN

LEONOR PATTERN

Ladies Duo Sizes: 0/2 to 28/30



- Semi-fitted.
- Button front bodice.
- Self belt.
- In-seam pockets.

SEWING INSTRUCTIONS

This pattern is featured on our blog “The Thread” at Fabrics-Store.com. There you will find step-by-step photo instructions and can ask questions, post comments, or share your progress. Simply visit: blog.fabrics-store.com and enter “Leonor Pattern” in the search box.

SIZING & YARDAGE

Ladies Size Guide Based on Body Measurements in Inches

Size	0/2	4/6	8/10	12/14	16/18	20/22	24/26	28/30
Bust	33-34	35-36	37-38	39-40	42-44	46-48	50-52	54-56
Waist	25-26	27-28	29-30	31-32	34-36	38-40	42-44	46-48
Hip	35-36	37-38	39-40	41-42	44-46	48-50	52-54	56-58

Finished Garment Measurements - Approximate in Inches

Size	0/2	4/6	8/10	12/14	16/18	20/22	24/26	28/30
Bust	40	42	44.5	47	51	55	59.5	64
Waist	40	42	44.5	47	51	55	59.5	64
Hips	46.5	48.5	51	53.5	57.5	61.5	66	70.5

Estimated Yardage* - 54" Width Linen

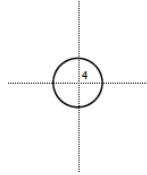
Size	0/2	4/6	8/10	12/14	16/18	20/22	24/26	28/30
Yardage	2 Yards		2.5 Yards			3.5 Yards		

*Allow up to 10% extra fabric for shrinkage

ALL SEAM ALLOWANCES ARE INCLUDED AND NOTED ON THE PATTERN AND IN THE TUTORIAL.

Formatted for paper sizes A4 and Letter.

“Leonor” Sewing Pattern



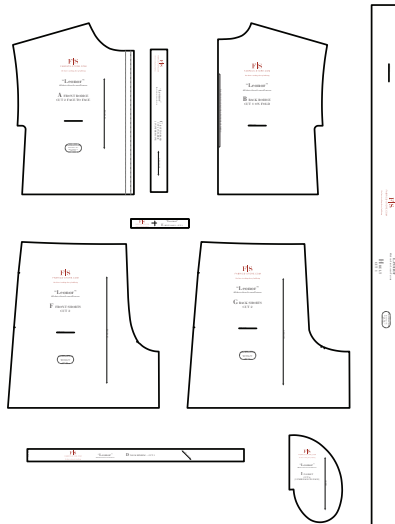
Simply overlap the page margins and align the markings in each corner to complete the circle and tape in place.

For instructions visit: blog.fabrics-store.com and enter “Leonor Pattern” in the search box.

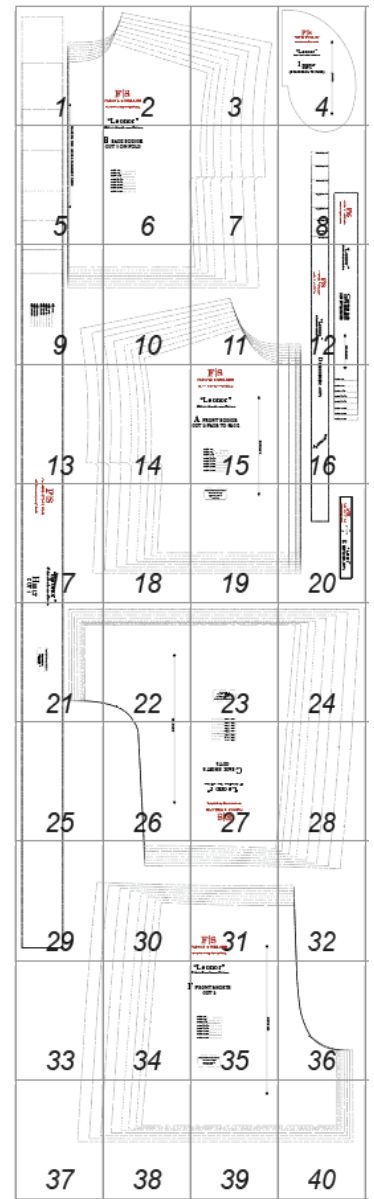
**2 Inch
Square to
Check Print
Accuracy**

Layered PDF:

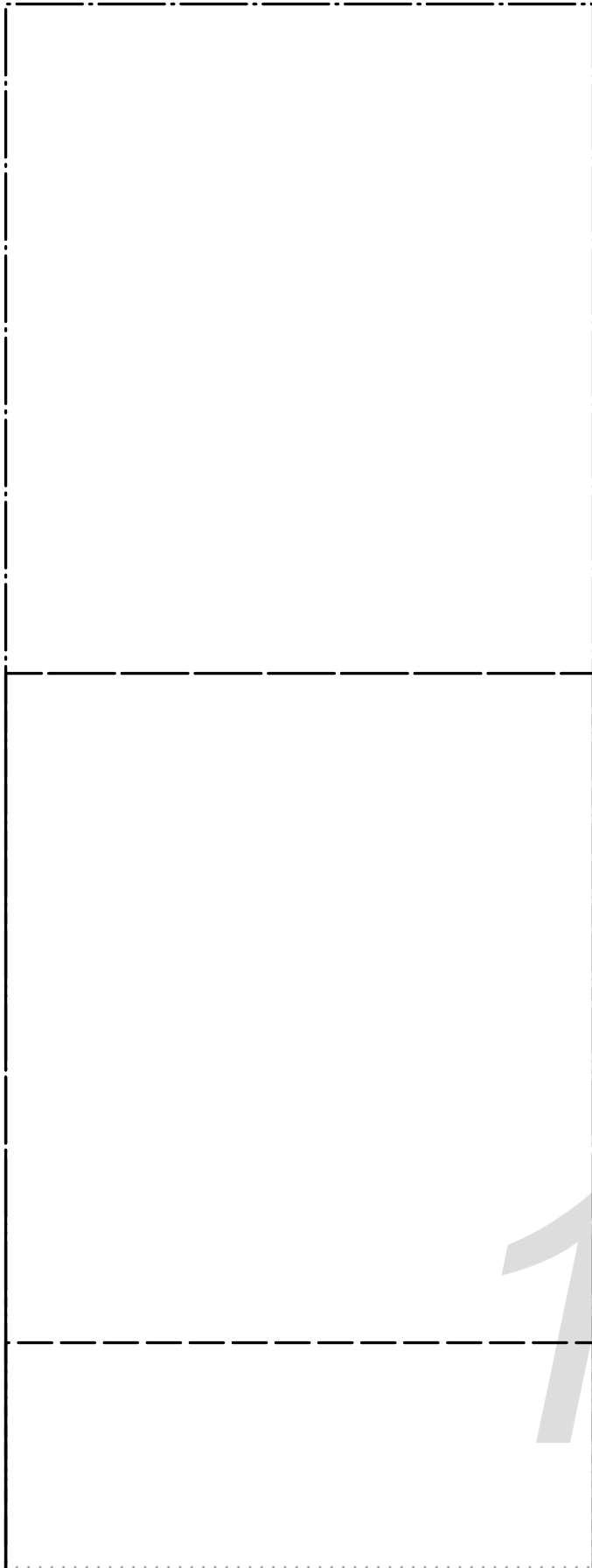
This pattern has embedded layers so you can print all sizes or a single size. See your .pdf viewers 'Layers' menu.



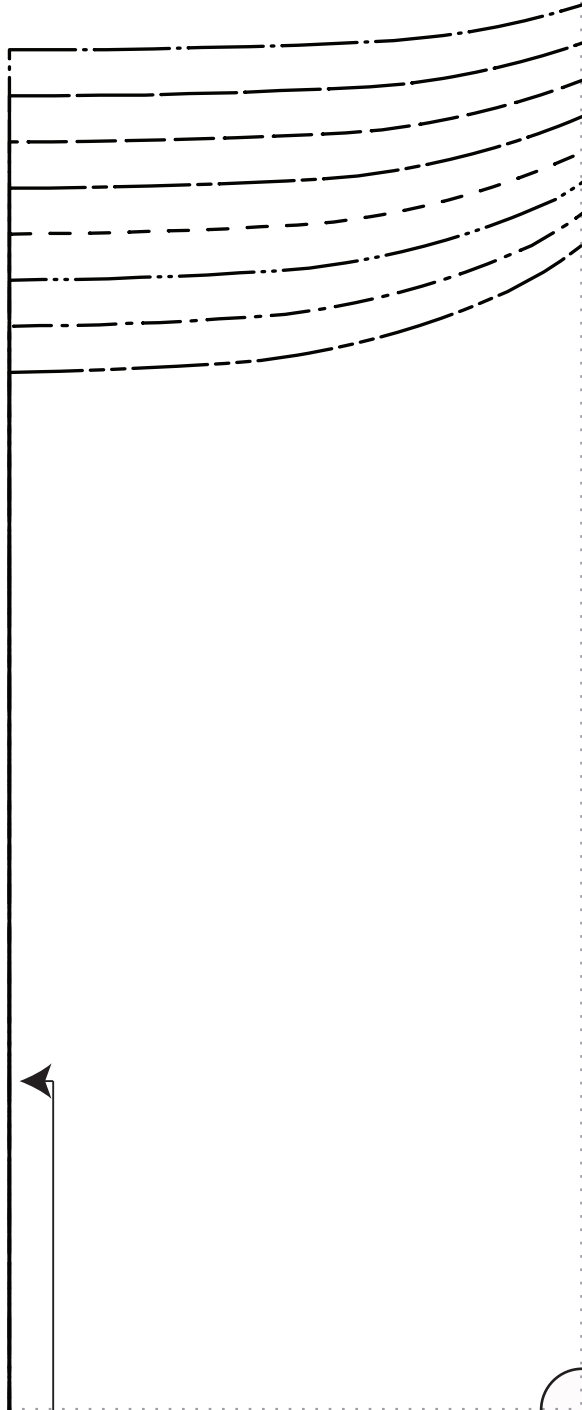
- A. FRONT BODICE
- B. BACK BODICE
- C. BUTTON BAND
- D. NECK BINDING
- E. BELT LOOPS
- F. FRONT SHORTS
- G. BACK SHORTS
- H. BELT
- I. POCKET

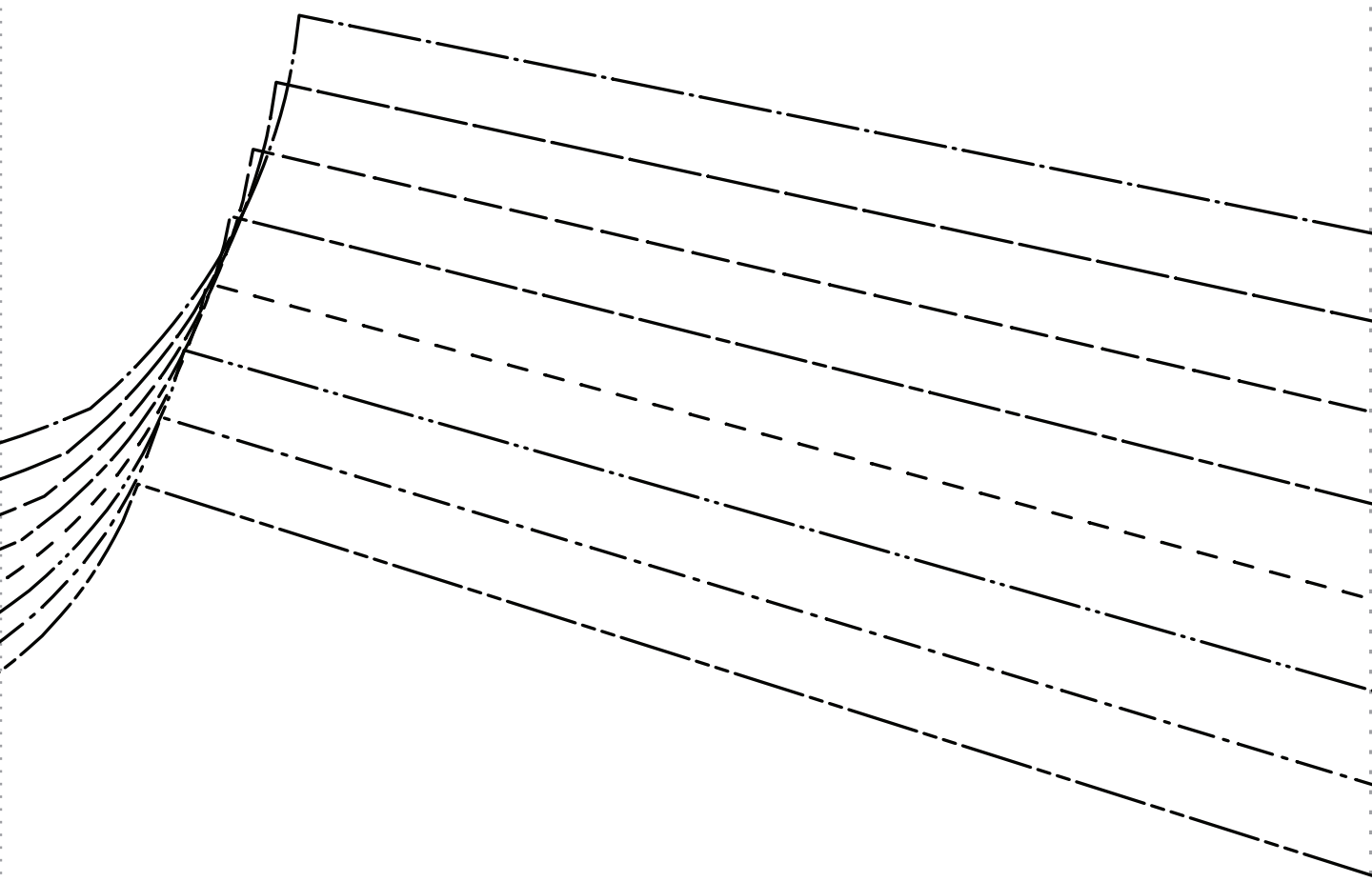


For instructions visit: blog.fabrics-store.com and enter “Leonor Pattern” in the search box.



1





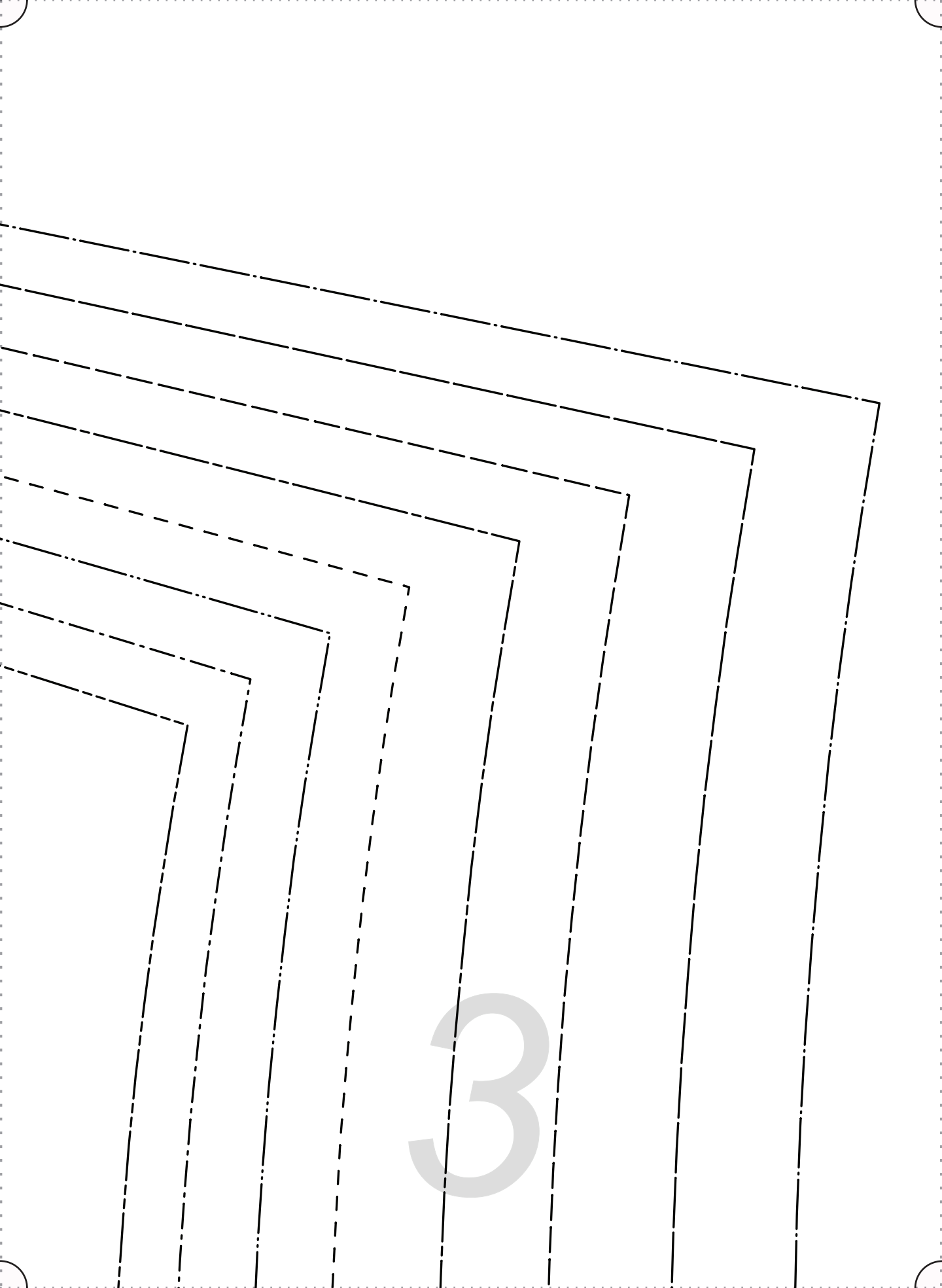
F|S

FABRICS-STORE.COM

Our linen is nothing short of addicting

2

“Leonor”



3



F|S

FABRICS-STORE.COM

Our linen is nothing short of addicting

“Leonor”

#FabricStoreLeonorPattern

I POCKET
CUT 4
(2 PAIR FACE TO FACE)

GRAINLINE

4

PLACE ON FOLD ALONG GRAINLINE OF FABRIC



5

B BACK BODICE

CUT 1 ON FOLD

SIZE 0/2

SIZE 4/6

SIZE 8/10

SIZE 12/14

SIZE 16/18

SIZE 20/22

SIZE 24/26

SIZE 28/30

6

7

F|S

FABRICS-STORE.COM

Our linen is nothing short of addicting

SIZE 28/30

SIZE 24/26

SIZE 20/22

SIZE 16/18

SIZE 12/14

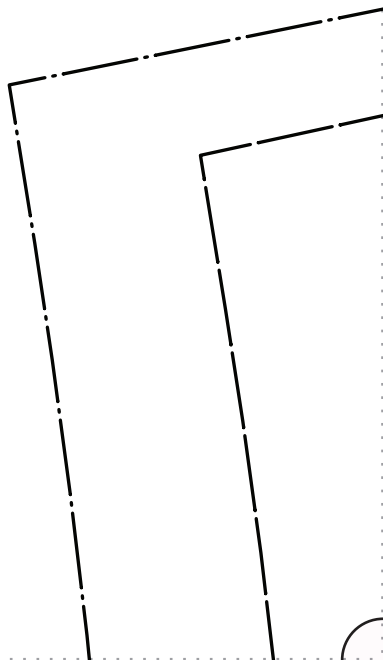
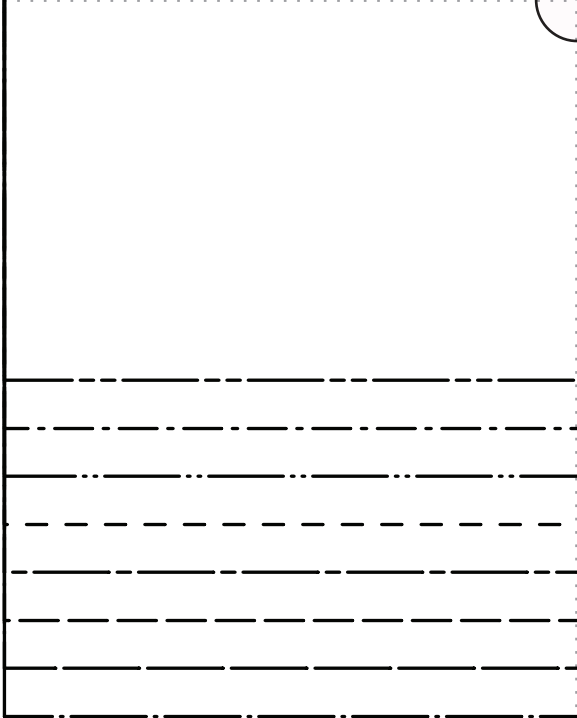
SIZE 8/10

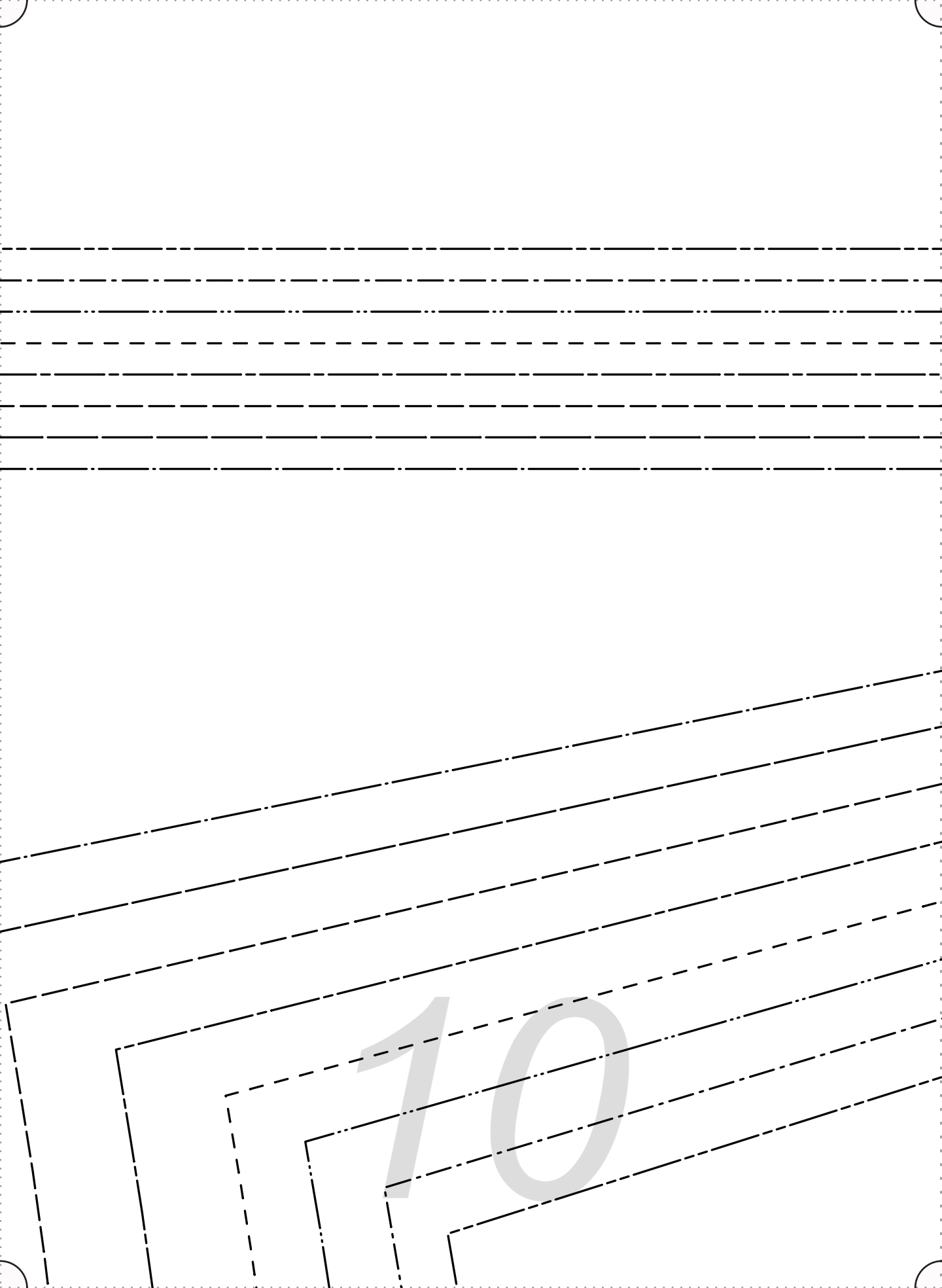
SIZE 4/6

SIZE 0/2

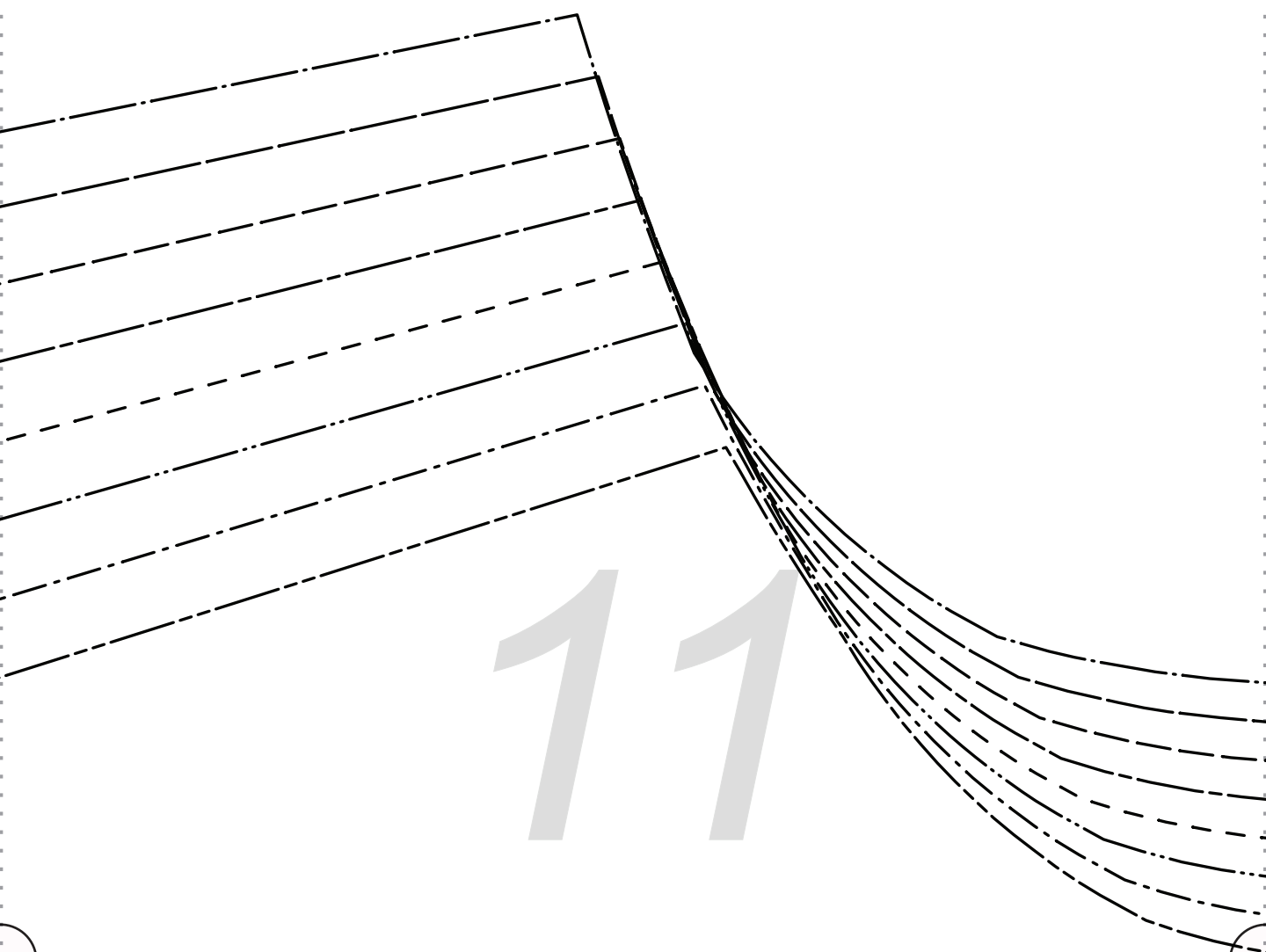
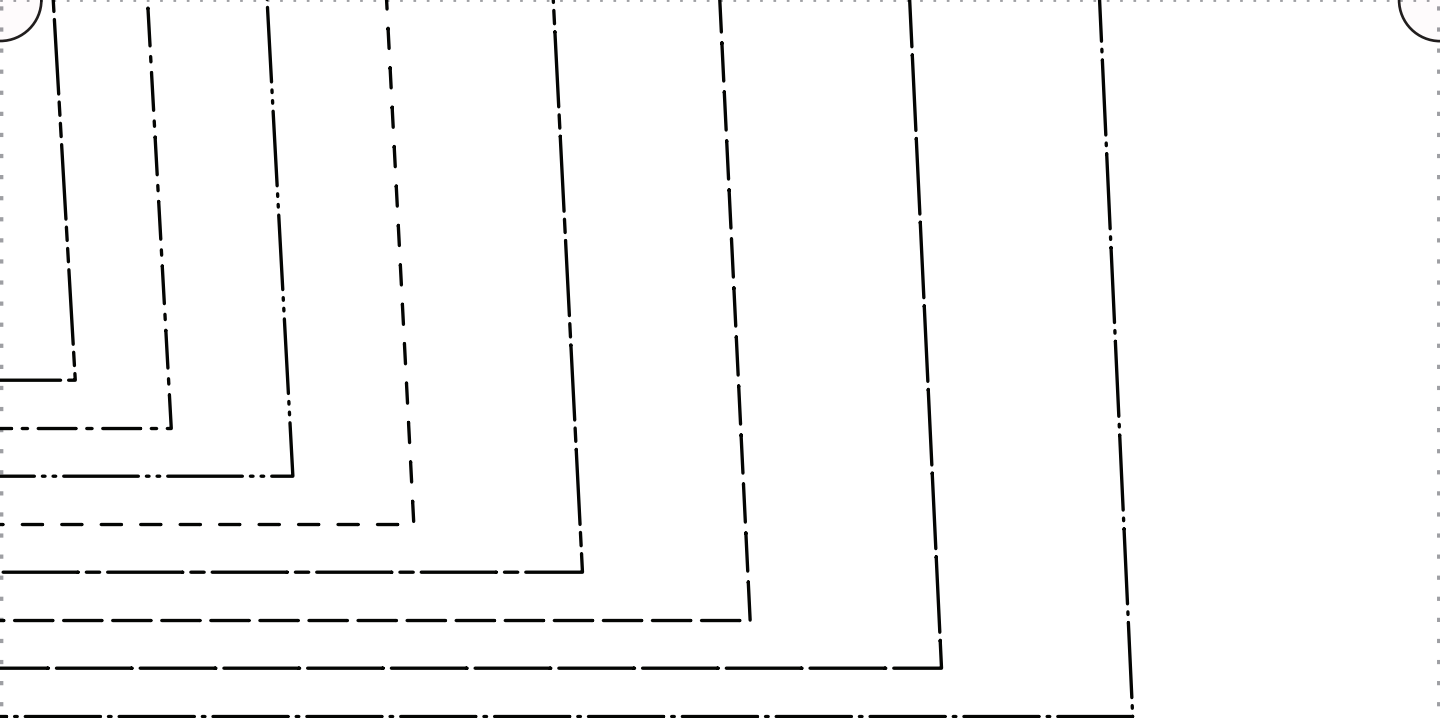
6

- SIZE 0/2
- SIZE 4/6
- SIZE 8/10
- SIZE 12/14
- SIZE 16/18
- SIZE 20/22
- SIZE 24/26
- SIZE 28/30





10



“LEONOR”

#FabricsStoreLeonorPattern

C BUTTON BAND
CUT 2 IN FABRIC
2 IN INTERFACING

GRAINLINE

F|S

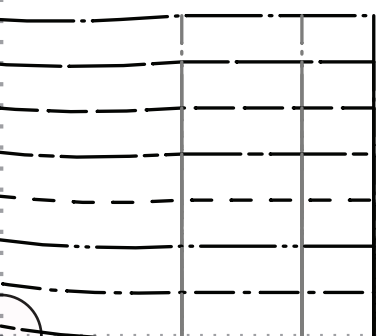
FABRICS-STORE.COM

Our linen is nothing short of addicting

“LEONOR”

#FabricsStoreLeonorPattern

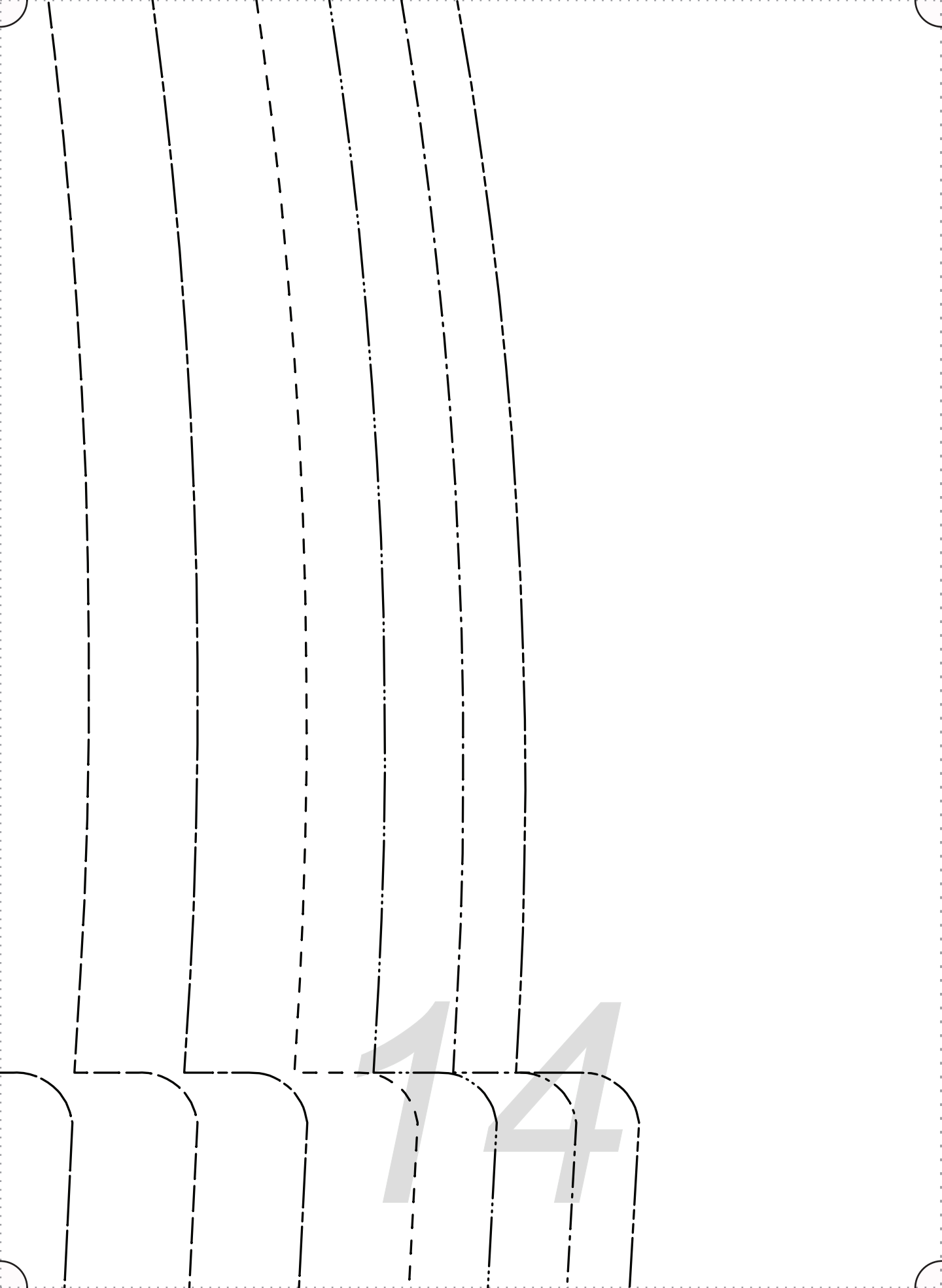
D



13

FA

Out



F|S

FABRICS-STORE.COM

Our linen is nothing short of addicting

“Leonor”

#FabricStoreLeonorPattern

A FRONT BODICE CUT 2 FACE TO FACE

SIZE 0/2 _____

SIZE 4/6 _____

SIZE 8/10 _____

SIZE 12/14 _____

SIZE 16/18 _____

SIZE 20/22 _____

SIZE 24/26 _____

SIZE 28/30 _____



GRAINLINE

15

NECK BINDING - CUT 1



SIZE 0/2

SIZE 4/6

SIZE 8/10

SIZE 12/14

SIZE 16/18

SIZE 20/22

SIZE 24/26

SIZE 28/30



16

F|S

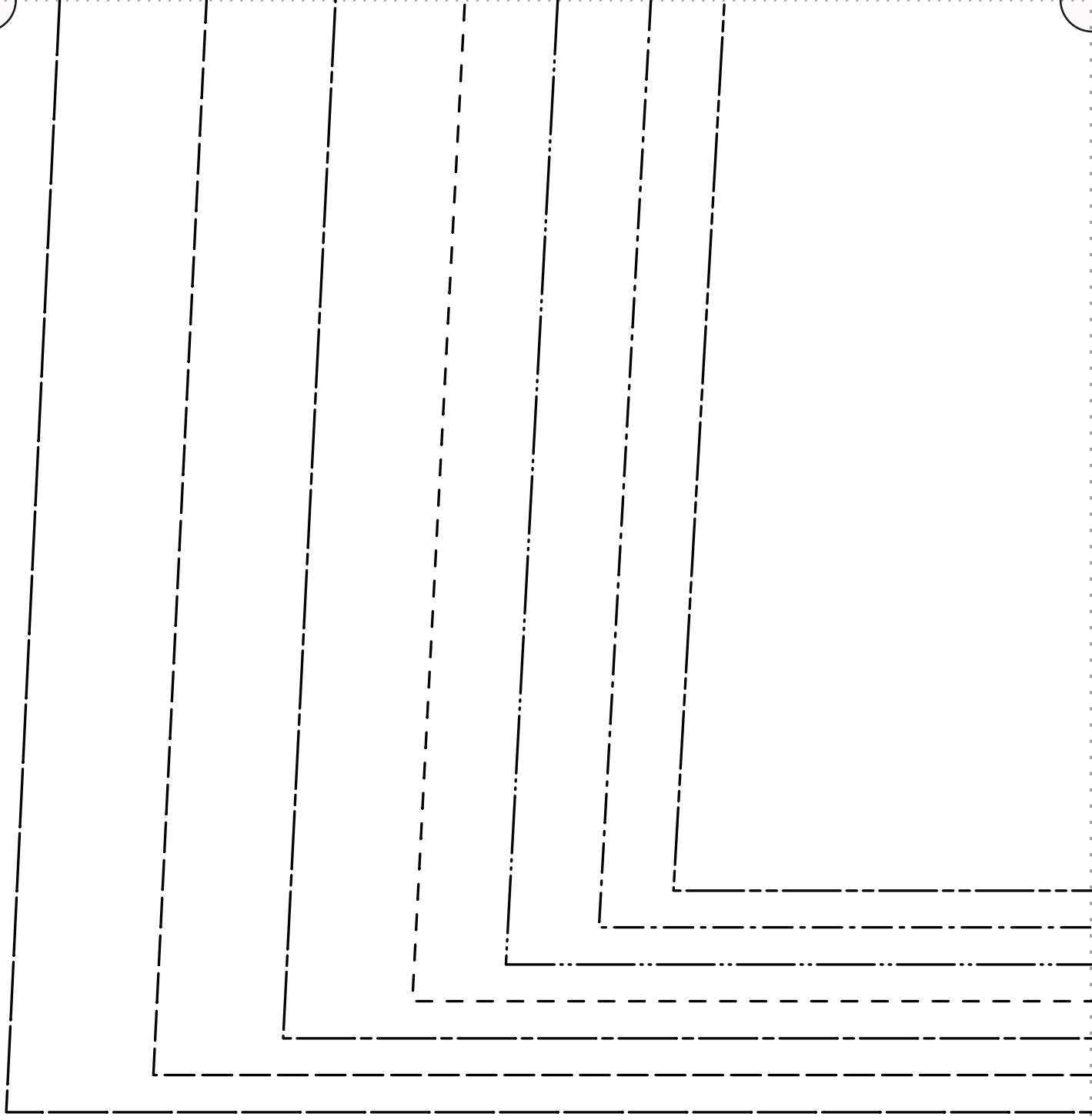
BRICS-STORE.COM

linen is nothing short of addicting

“LEONOR”

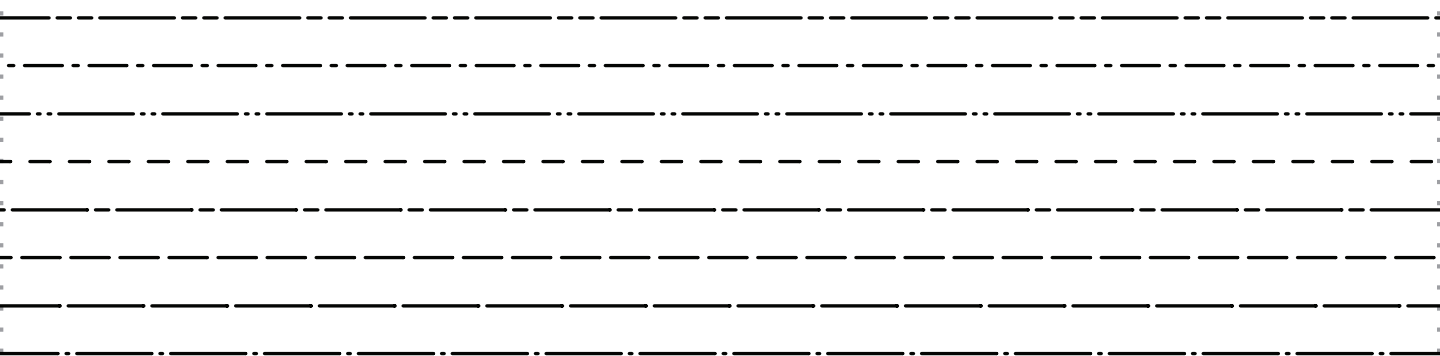
#FabricStoreLeonorPatte

H BELT
CUT 1



18

All Seam Allowances Included
Main Seams: 3/8"
Waist & Hem: 1"
Belt: 1/4"

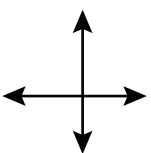


19

F|S

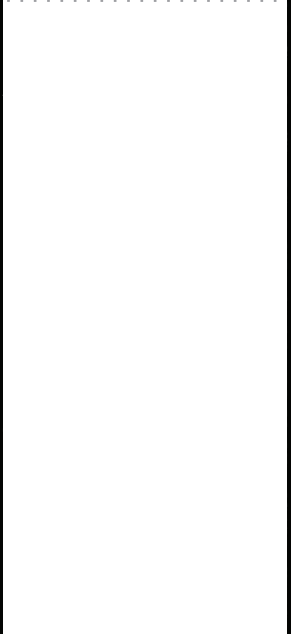
FABRICS-STORE.COM

Our linen is nothing short of addicting

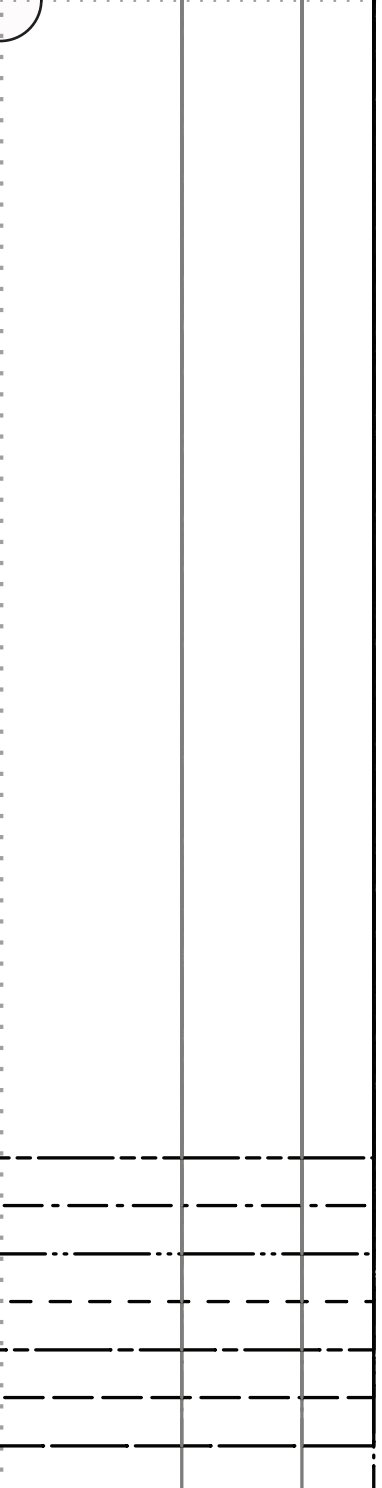


“Leonor”

E BELT LOOPS – CUT 1

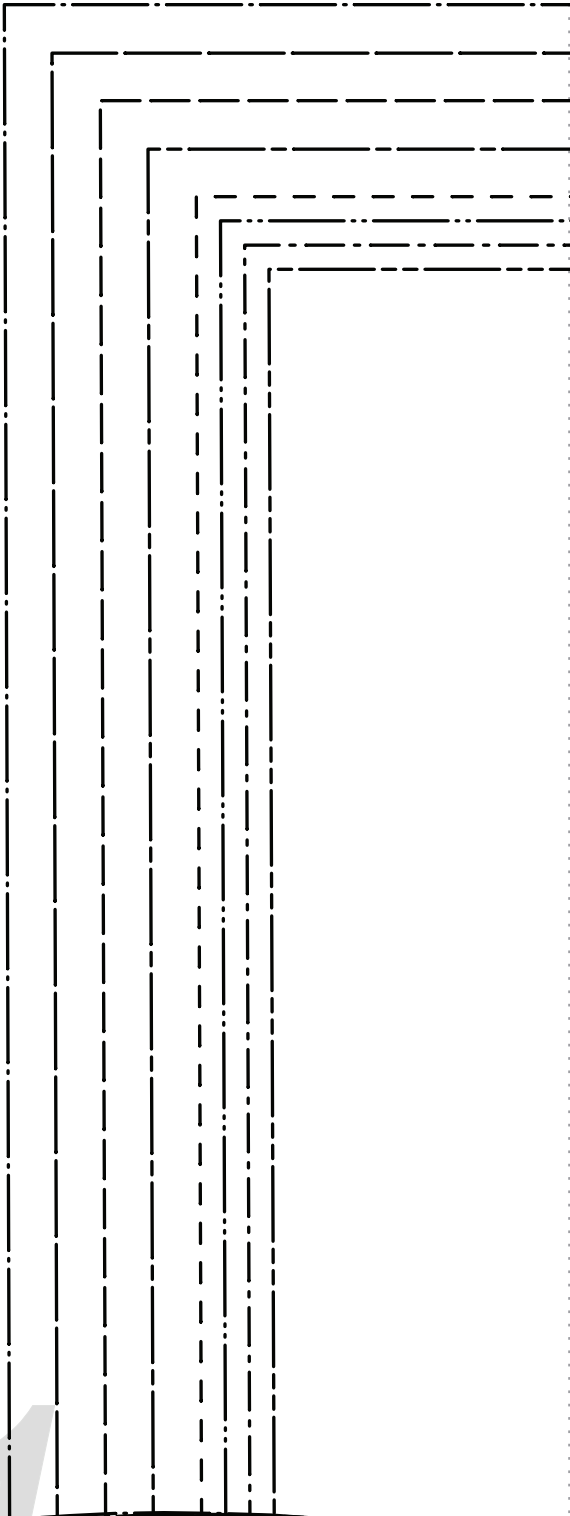


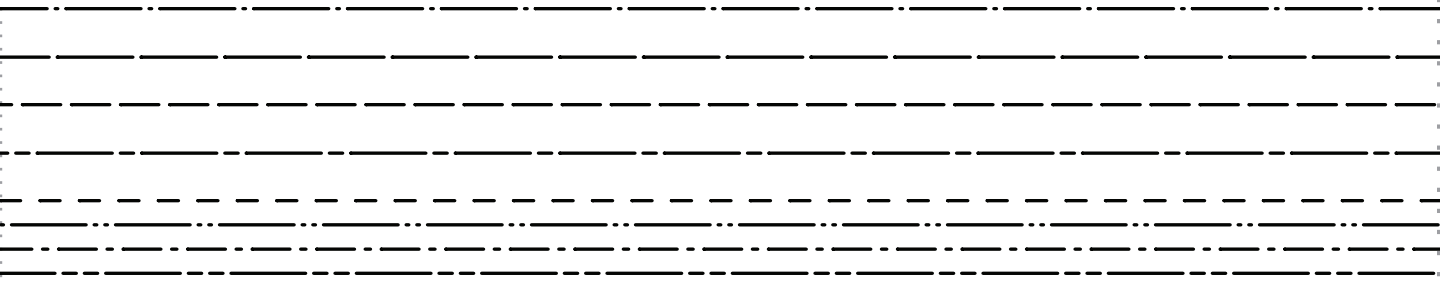
20



All Seam Allowances Included
Main Seams: 3/8"
Waist & Hem: 1"
Belt: 1/4"

21





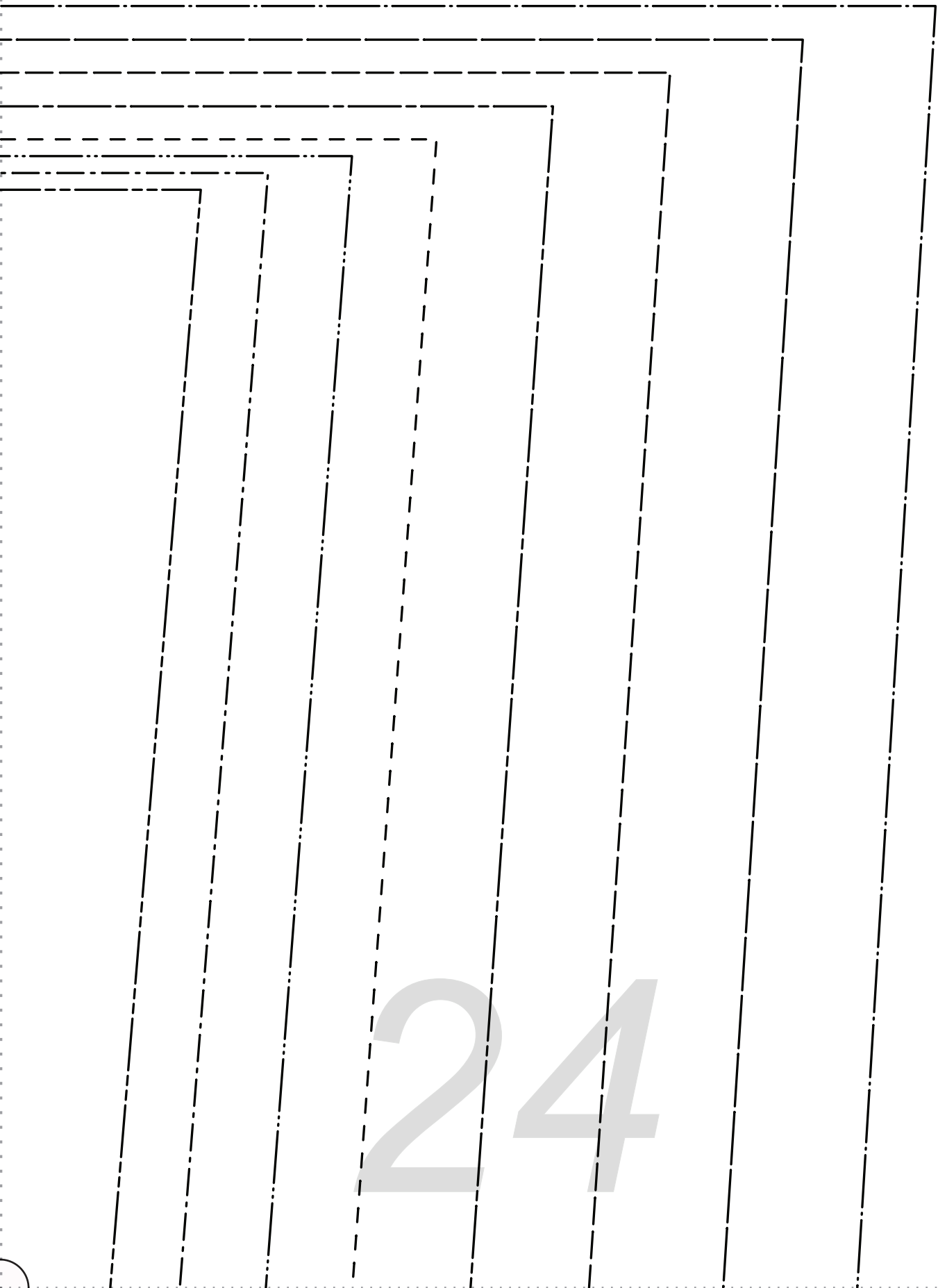
22



GR

All Seam Allowances Included
Main Seams: 3/8"
Waist & Hem: 1"
Belt: 1/4"

23



24

25



26

SIZE 0/2
SIZE 4/6
SIZE 8/10
SIZE 12/14
SIZE 16/18
SIZE 20/22
SIZE 24/26

G BACK SHORTS CUT 2

#FabricStoreLeonorPattern

“Leonor”

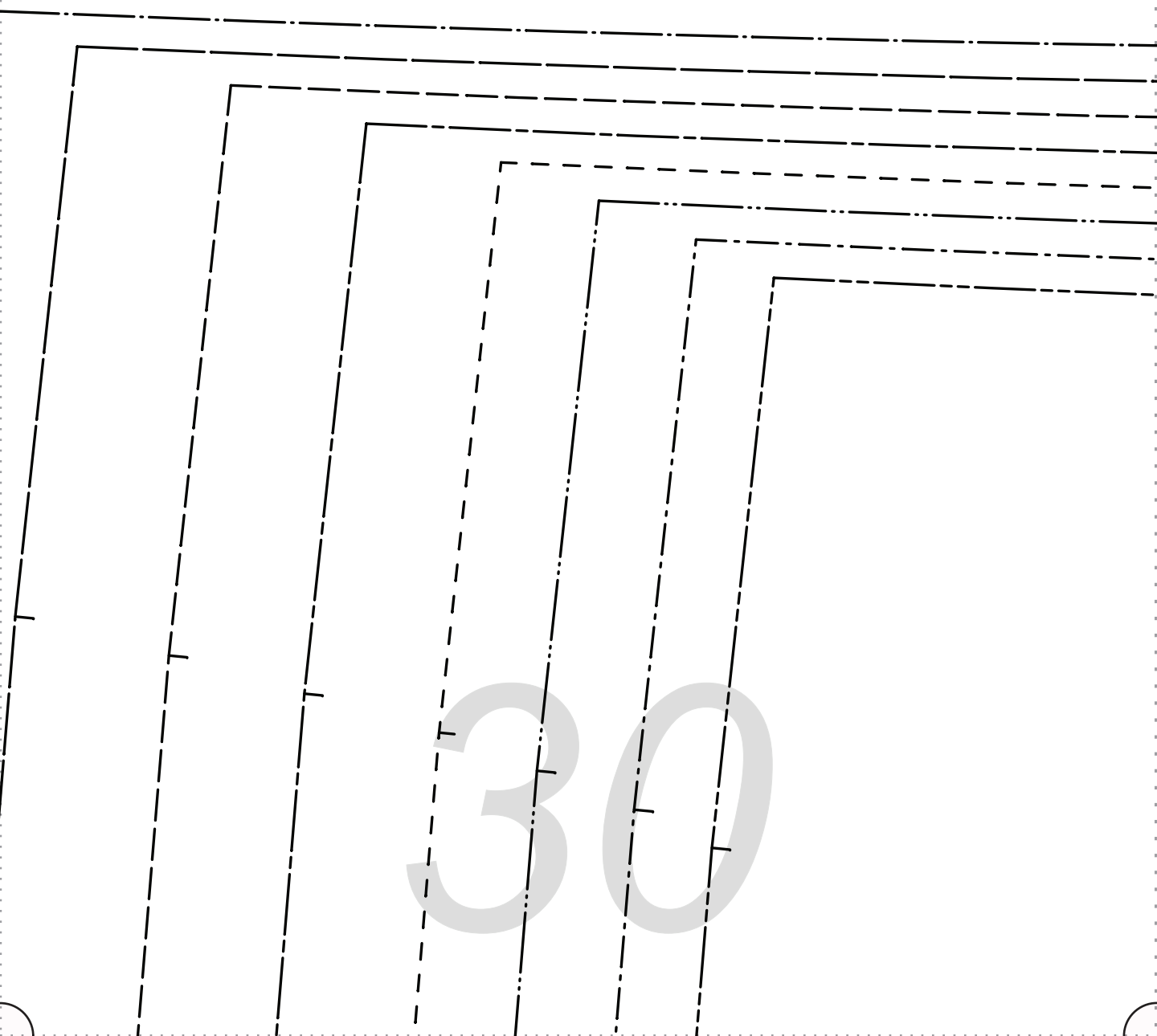
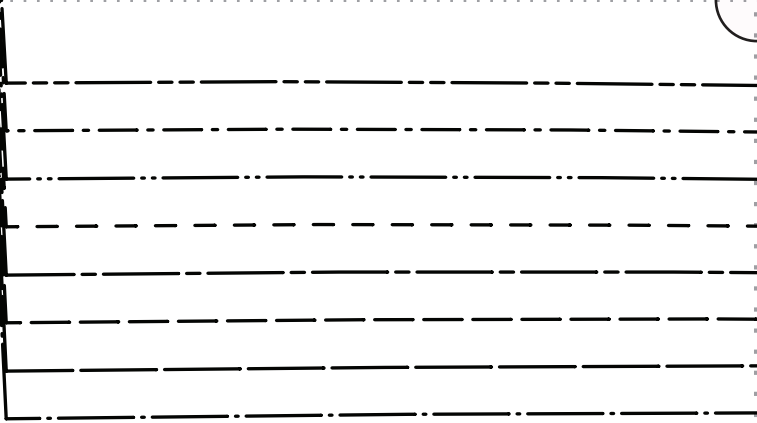
Our linen is nothing short of addicting

FABRICS-STORE.COM

F|S
27

28

29



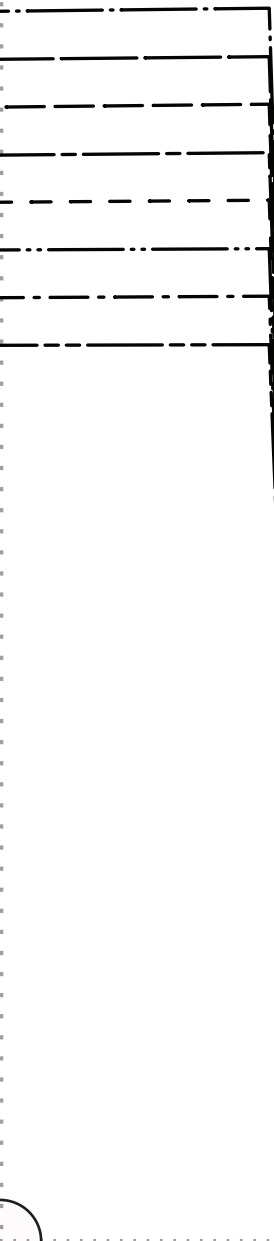
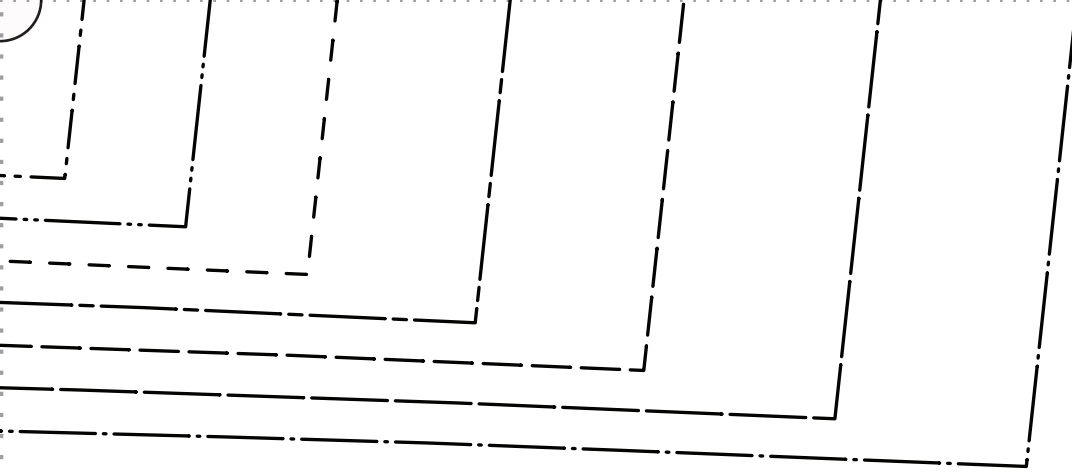
F|S

FABRICS-STORE.COM

31

Our linen is nothing short of addicting





32

33



34

E

“Leonor”

#FabricsStoreLeonorPattern

FRONT SHORTS CUT 2

SIZE 0/2 _____

SIZE 4/6 _____

SIZE 8/10 _____

SIZE 12/14 _____

SIZE 16/18 _____

SIZE 20/22 _____

SIZE 24/26 _____

SIZE 28/30 _____

GRAINLINE

All Seam Allowances Included

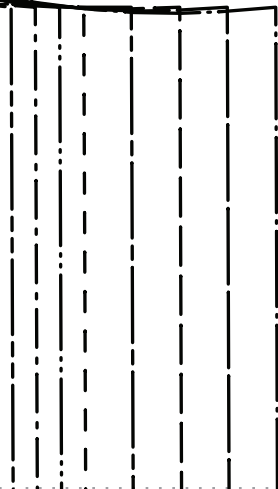
Main Seams: 3/8"

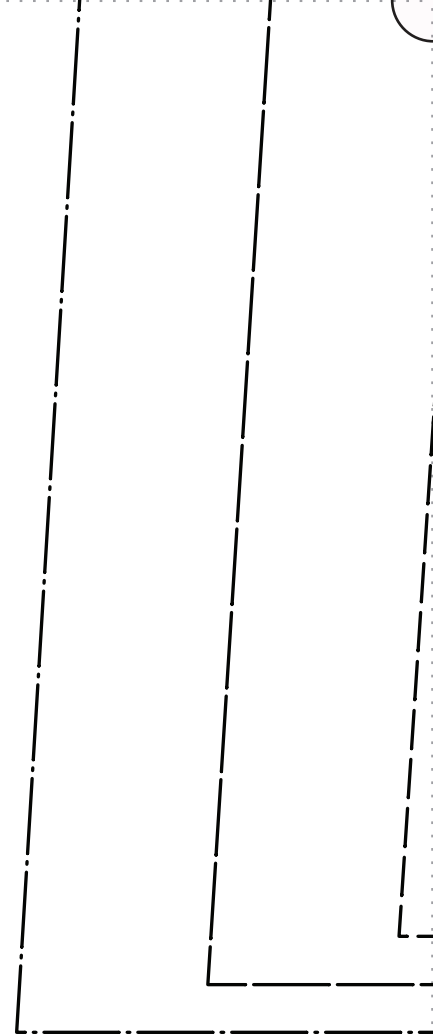
Waist & Hem: 1"

Belt: 1/4"

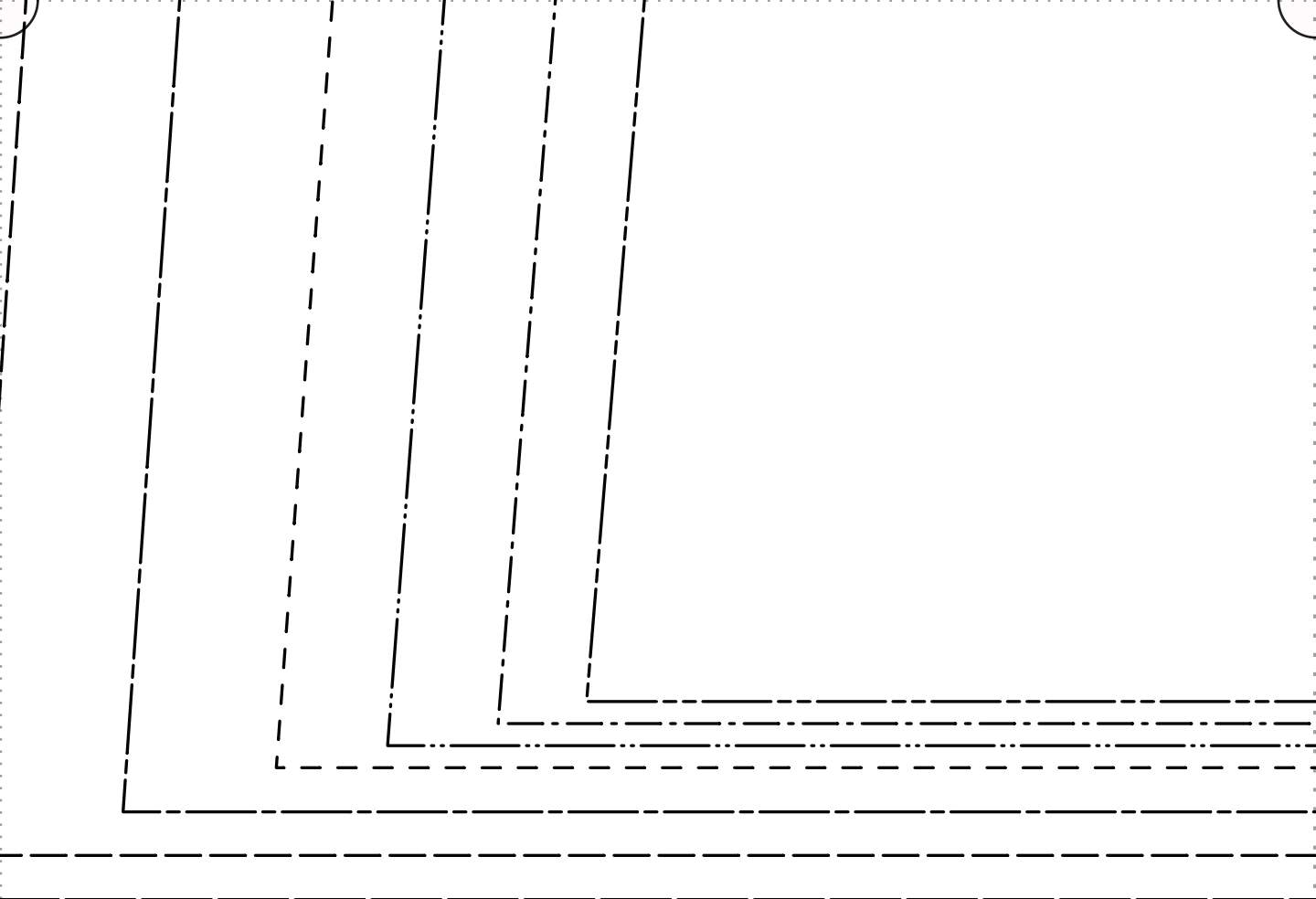
35

36





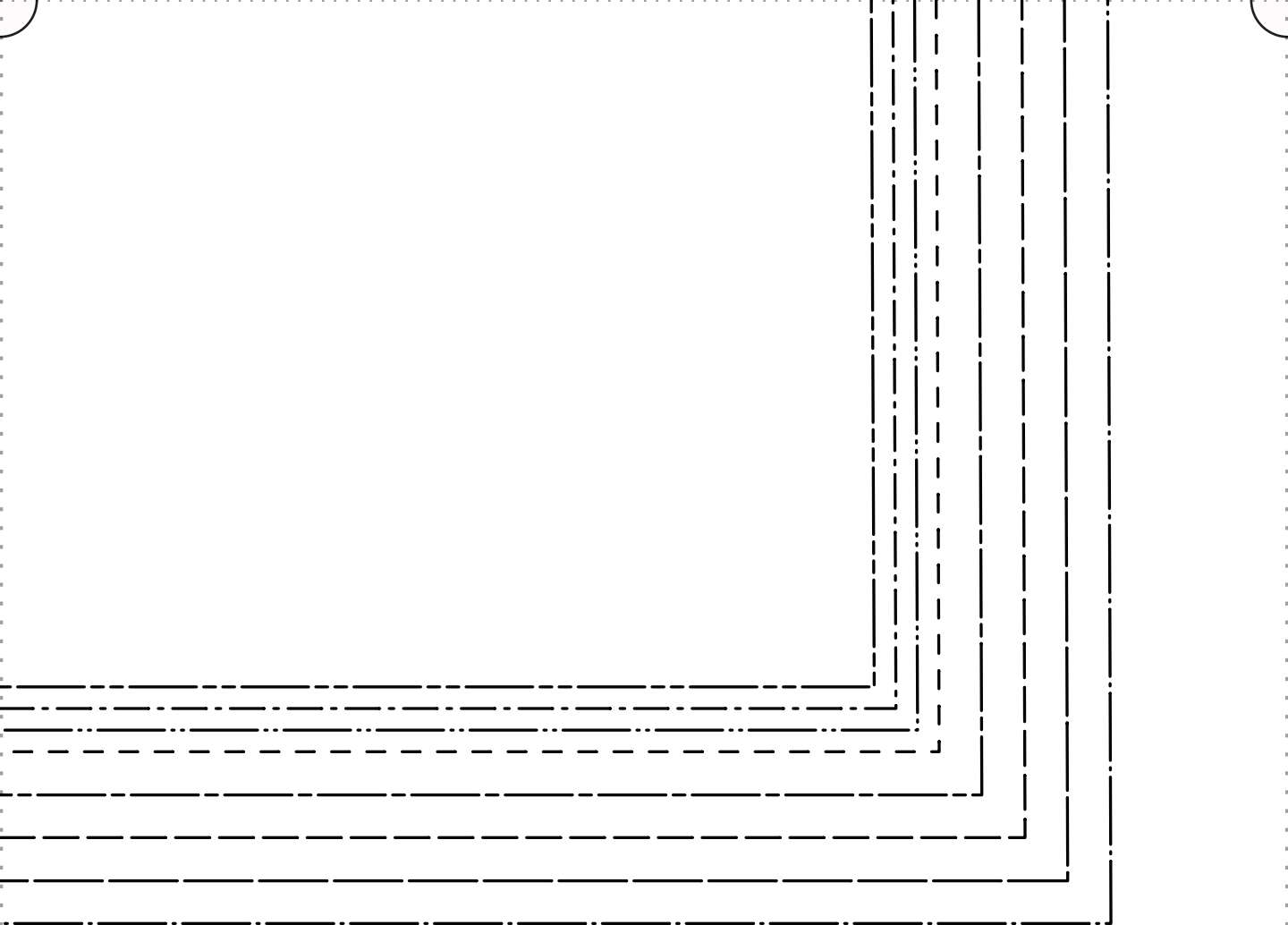
37



38



39



40

Thank you

*We work hard on making our patterns beautiful
enough to meet your standards.*

*If you feel like sharing praise or helpful criticism,
please send us your comments to ask@fabrics-store.com*