

F|S

FABRICS-STORE.COM

Our linen is nothing short of addicting

KSENIA PINAFORE



A HOUSE FAVORITE

*More than just your typical apron, this linen pinafore
is an upgrade both in style and functionality.
Beautifully tailored with deep pockets.*

Three sizes fits most.

866.620.2008 ASK@FABRICS-STORE.COM FABRICS-STORE.COM

KSENIA PATTERN

Ksenia is a tailored yet whimsical linen pinafore with shoulder straps, a front bib, waistband ties and deep slit pockets. The pleated front makes for a natural handy “towel” whenever you need it!

Three sizes fits most.

Simple instructions for the intermediate sewist.

PICTURED: LAURA WEARING IL019 5.3oz LINEN IN EGGPLANT.



Our lovely model Laura is 5'10" and wearing size Small of this pattern with the following adjustments: Bodice and shoulder straps lengthened 1.25"

PATTERN DETAILS



KSENIA PINAFORE

Sizes: S / M / L

- Shoulder straps with adjustable fit.
- Waistband with back ties
- Front bib panel
- Slightly flared skirt shape
- Front skirt pinch pleats or gathers.
- Pockets with clean slit openings.
- Three sizes fits most

FABRICS AND SUPPLIES

- Pre-washed/shrunk Medium to Heavy weight linen.
- We sampled Ksenia in our IL019 5.3oz Medium weight pure linen. With its smooth look and tighter weave, this linen is neither sheer or heavy, but just the right in-between weight you will need for a variety of projects.
- Matching all purpose thread.

SIZING & YARDAGE

Misses/Women's Size Guide Based on Body Measurements in Inches

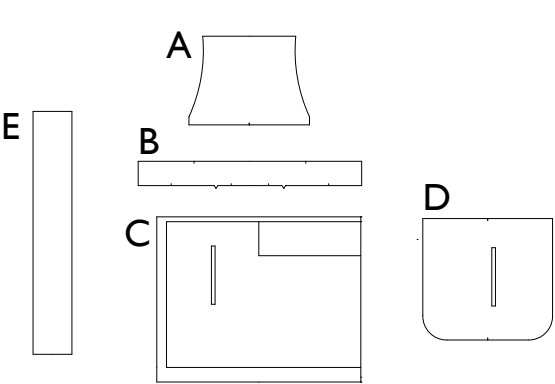
Size	SM (2-10)	MED (12-20)	LG (22-28)
Fits Waists:	26" to 30"	31" to 38"	40" to 46"

Estimated Yardage - 54" Width Linen - Shrinkage Has Been Calculated

2 Yards for all sizes*
*Use remnants for matching towels!

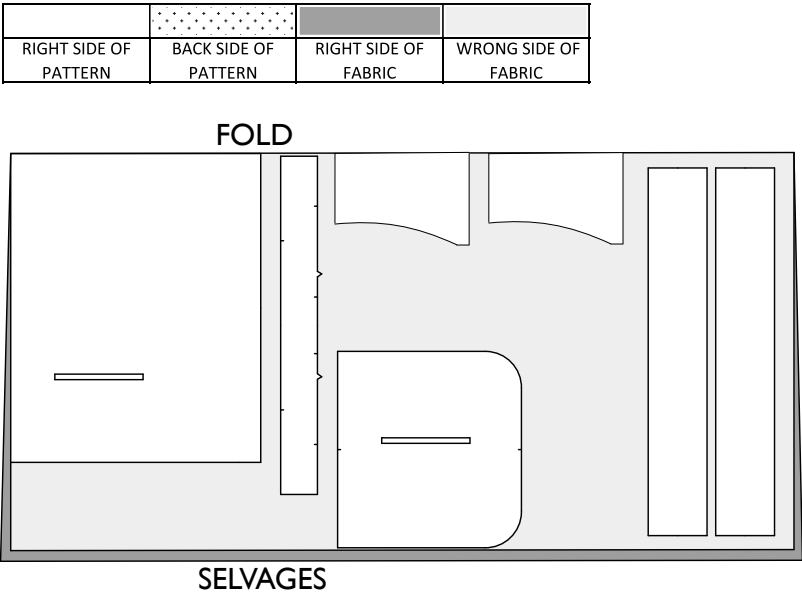
PATTERN & CUTTING GUIDES

PATTERN PIECE REFERENCE



- A: FRONT BIB-
CUT 2 IN LINEN
- B: WAISTBAND-
CUT 2 IN LINEN
- C: SKIRT-
CUT 1 IN LINEN CENTER FRONT "ON FOLD"
- D: POCKET-
CUT 2 IN LINEN "FACE TO FACE"
- E: STRAPS AND TIES-
CUT 4 IN LINEN

CUTTING LAYOUT EXAMPLE



SEWING & PREPARATION TIPS:

Sewing with quality linen from Fabrics-Store is very enjoyable! Linen is a stable fabric that does not easily shift or slip, which is a very helpful characteristic for sewing a neat and even seam with little effort. You do not need to “push” or “pull” the fabric while sewing... just simply guide it.

Pre-washing: You will want to prewash and dry your linen fabric in the same manner you would your finished garment. This will soften your fabric, and eliminate further shrinkage in your final garment.

If you plan on only dry cleaning your final garment, likewise you will want to dry clean the fabric before cutting and sewing. Secure the raw edges with a zig-zag or serger stitch before washing to avoid fraying. You may also sew the two raw edges together to form a continuous piece to avoid twisting in the wash. Remove fabric from dryer while it is still slightly moist. Press any deep creases or wrinkles using your iron's steam setting with high heat, using a protective press cloth if needed to avoid scorching.

Fine Seaming: To ensure that your seaming will last as long as your linen garment, we encourage “single-needle” tailoring and French seaming. Once you think of French seams as simply sewing the seam twice to encase the raw edges, you will see that it does not take that much more time than the second step of using a serger. Setting the stitch length on your sewing machine to 2mm (about 12-14 stitches per inch) makes for a very durable seam, and is also an attractive indication of fine tailoring.

Alternate Seaming: If you instead prefer to stitch your seams regularly and serge the raw edges, simply sew the seams with the full 5/8” allowance. You can then serge the raw edges, allowing the machine to trim 1/8” off the edges. This will result in seam allowances finishing at 1/2”.

Pressing: For best results, it is highly recommended that you press your seams as you finish sewing each of them. Pressing with a steam iron (and press cloth if needed) will help “set” the stitches into the fabric. You will find it is much easier to press your seams “as you go” instead of trying to press them all after the garment is finished.

Sewing Glossary: If certain sewing terms and techniques are new to you, please refer to the sewing glossary at the end of this document.

SEWING INSTRUCTIONS:

1. Prepare the waist ties: sew 1/2" along the full length, and on one end. Turn inside out, neatly press.
2. Prepare the shoulder straps. Sew 1/2" seam along the full length. Turn inside out and neatly press.
3. Bib front. Align one edge of the shoulder straps to the outer top edge of one bib layer, right sides together. Baste the straps in place.
4. Layer the other bib piece on top, with right sides together. Stitch around the sides and top. Leave the bottom unstitched.
5. With right sides together, sandwich the two top edges of the waist pieces to the lower edge of the bib. Be sure to leave an extra 1/2" at each end of the waistband to later insert the waist ties.
6. Skirt: At the front waist as indicated on the pattern, create your choice of pleats or gathers or smocking.
7. Pockets: with right sides together, align the pocket opening markings on the pocket with the corresponding markings on the skirt. Sew the rectangle as indicated. Cut through the length of the pocket opening right down the center. Snip the inner corners. Turn inside out and neatly press. Fold the pocket bag in half and sew around the edges. This can be a French seam, or simply a sewn/serged seam.
8. Hem the sides of the skirt by turning 1/2" twice and topstitching.
9. Sew the waist of the skirt into the outer waistband layer. Again, leave the extra 1/2" at the end of the waistbands to insert the waist ties.
10. Waist ties: Sandwich the waist ties into the ends of the waistband. Stitch 1/2" and turn right side out.
11. Finish the inside of the waist: Turn under the lower edge of the inner waistband. Catch this edge by topstitching around the waistband or if desired, handstitch in place.
12. Hem the bottom of the skirt. Turn under 1/2" and again a full inch. Topstitch or sew by hand if desired.
13. Try on the pinafore to position the shoulder straps in a comfortable place in the back waist. Sew in place with a topstitch, or if desired tack by hand.

Glossary:

Basting Stitch: A temporary hand or machine loose or long stitch to hold a seam in place before sewing the final permanent stitching.

Bias grain: In woven fabrics, this is the diagonal direction at 45 degrees to the grain and crossgrain. There are two bias directions in the cloth, perpendicular to each other.

Buttonhole: A slit in the fabric to fasten a button. The raw edges of the slit are finished with a machine or hand sewn zig-zag stitch.

Ease stitch: A row of stitching sewn just to the inside of a single layer of seam allowance. While stitching, coax the weave of the fabric with your finger or stylus to “compress” the fabric together. This creates a “gathering” effect without puckers. If desired, a second row of stitching can be done for more ease.

Edge stitch: A row of top stitching very close to a seamed edge or folded edge, usually about 1/16th of an inch.

Fabric- right side: The side of the fabric which will be the exposed, outside part of a garment.

Fabric- wrong side: The inside of the fabric which will be the unexposed side or inside of a garment.

French seam: A seam sewn in two steps to encase the raw edges of the fabric within itself, giving a clean finish. 1- Wrong sides together, sew 1/4” seam. 2- Turn right sides together, stitch 3/8” seam. Total 5/8” seam allowance.

Grainline- cross grain: The direction of fabric going from selvage edge to selvage edge. In woven fabric, these would also be known as the weft threads of the weave.

Grainline- on grain: The direction of fabric running parallel to the selvage edge of the cloth. This is also referred to as the “lengthwise grain”. In woven fabric, these would also be known as the “warp” threads of the weave.

Notch- outward: Markings on the pattern that indicate an outward triangular cut outside the seam allowance. Notch markings will be arranged to show where two seam edges join properly together. A single wedge will often indicate a front piece, and 2 to 3 wedges together can indicate back pieces.

Notch- snip: Markings on the pattern that indicate a small “snip” into the seam allowance. Notch marking will be arranged to show where two seam edges join properly together. A single notch will often indicate a front piece, and 2 to 3 notches together can indicate back pieces.

Glossary (continued):

Overlock machine: A specialized sewing machine designed to sew and cut along the raw edge of a fabric seam with a networked stitch to secure the edges from fraying. Also known as a "serger" machine.

Press cloth: A piece of cloth used to lay over a garment to protect it while ironing from burning or scorching. Usually made of cotton or linen or wool.

Raw edge: The cut edge of fabric. If not secured with stitching or a finishing, the raw edge of a fabric can fray or unravel.

Seam allowance: The distance from the cut edge of a pattern piece to the sewing line. Seam allowances can vary, so be sure to double check the indicated amounts on your pattern.

Stay stitch: A row of stitching on a single layer of the seam allowance edge to prevent stretching. You are neither pushing or pulling the fabric- just guiding. The row of stitching will be just to the inside of the permanent seam allowance width. For example, if the seam allowance is 5/8", your stay stitch will be 1/2" or a "scant" 5/8". You will want your permanent stitching to conceal the stay stitch.

Understitch: A row of stitching on a the seamed edge of facing. This prevents the facing from rolling out to the outside and keeps it neatly in place along the garment edge. The stitching will only go on the facing side, catching the seam allowance with it. The stitching will show on the facing, but not on the garment side.

“Ksenia” Sewing Pattern

2 Inch Test Square

SIZE LINE TYPES

SIZE 2-10 _ _ _ _ _

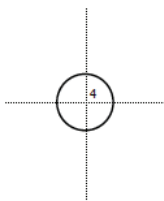
SIZE 12-20

SIZE 22-28.

PRINT ONLY THIS PAGE FIRST TO CHECK SCALE

IMPORTANT! PRINT AT ACTUAL SIZE OR 100% SCALE

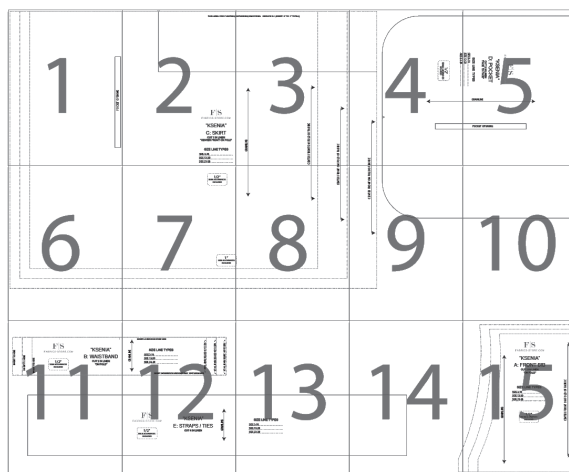
Formatted for paper sizes A4 and Letter.



Simply overlap the page margins and align the markings in each corner to complete the circle and tape in place.

Layered PDF:

This pattern has embedded layers so you can print all sizes or a single size. See your .pdf viewers 'Layers' menu.



POCKET OPENING

THIS AREA FOR PLEATING/

F|S

FABRICS-STORE.COM

“KSENIA”

C: SKIRT

CUT 1 IN LINEN

“CENTER FRONT ON FOLD”

SIZE LINE TYPES

SIZE 2-10 _ _ _ _ _

SIZE 12-20 _ _ _ _ _

SIZE 22-28 _ _ _ _ _

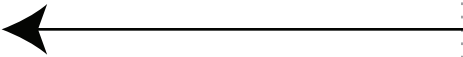
GATHERING/SMOCKING. REDUCE 3:1 (EVERY 3" TO 1" TOTAL)

GRAINLINE

CENTER FRONT ON FOLD OF FABRIC

IN FOLD OF FABRIC

1/2"
SEAM ALLOWANCES
INCLUDED



FABRIC



FABRICS-STORE.COM

“KSENIA”

D: POCKET

CUT 2 IN LINEN
“FACE TO FACE”

GRAINLINE

A horizontal arrow pointing to the right, indicating the grainline direction.

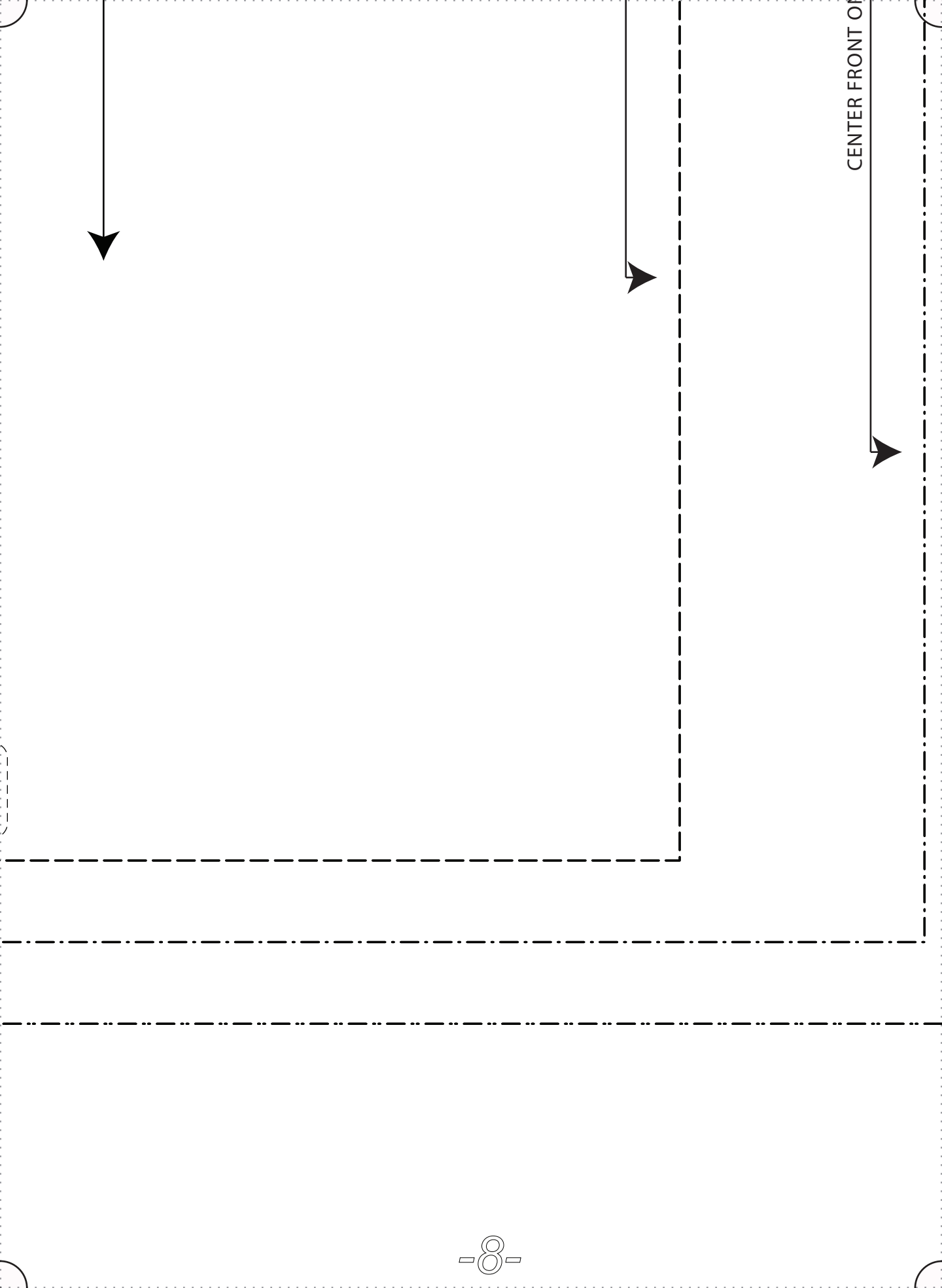
POCKET OPENING

A rectangular box with a black border, representing the pocket opening.

Note: This side goes towards center front
as the pocket opening facing.

1/2"
SEAM ALLOWANCES
INCLUDED

1"
HEM ALLOWANCES
INCLUDED



CENTER FRONT OF

CENTER FRONT ON FOLD OF P



F|S
FABRICS-STORE.COM

**“KSENIA”
B: WAISTBAND**

1/2"
SEAM ALLOWANCES
INCLUDED

CUT 2 IN LINEN
“ON FOLD”

INSERT LOWER EDGE OF BIB HERE



SIZE LINE TYPES

SIZE 2-10 _____

SIZE 12-20 _____

SIZE 22-28 _____

^-- SIZE 2-10 CENTER FRONT FOLD --^

^-- SIZE 12-20 CENTER FRONT FOLD --^

^-- SIZE 22-28 CENTER FRONT FOLD --^

INSERT GATHERED/PLEATED/SMOCKED SKIRT AREA HERE

F|S

FABRICS-STORE.COM

1/2"

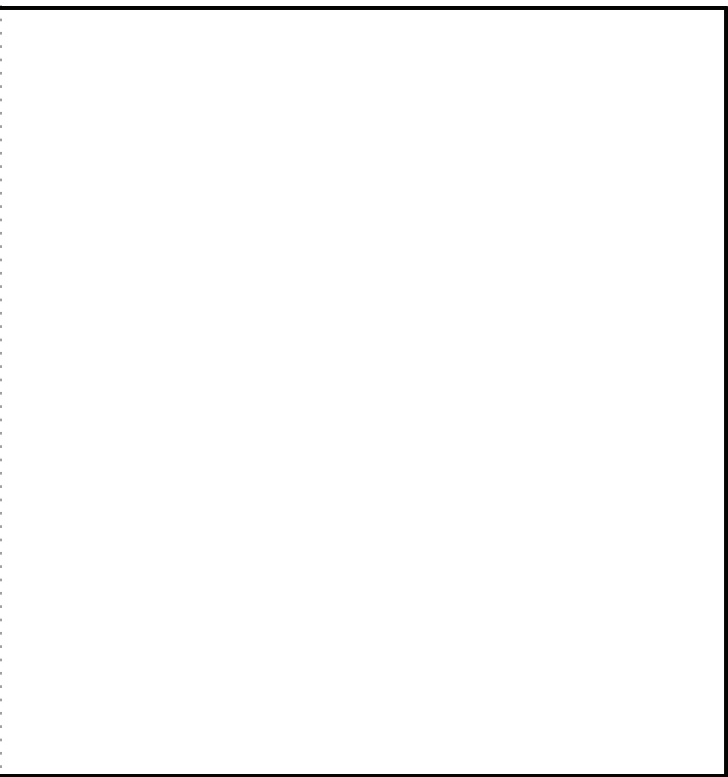
SEAM ALLOWANCES
INCLUDED

“KSENIA”

E: STRAPS / TIES

CUT 4 IN LINEN





F|S

FABRICS-STORE.COM

“KSENIA”
A: FRONT BIB

CUT 2 IN LINEN
“ON FOLD”

SIZE LINE TYPES

SIZE 2-10

SIZE 12-20

SIZE 22-28

1/2"

SEAM ALLOWANCES
INCLUDED

GRAINLINE

CENTER FRONT ON FOLD OF FABRIC

Thank you

*We work hard on making our patterns beautiful enough to
meet your standards.*

*If you feel like sharing praise or helpful criticism, please
send us your comments to ask@fabrics-store.com*