

F|S

FABRICS-STORE.COM

*Our linen is nothing short of addicting*

# EVA TIE TOP



## COOL LINEN SIMPLICITY

*Simple versatility... wear Eva as a minimalist crop top tied at the waist, layered over our Nico sheath dress or even open as an easy throw-on-and-go breezy drapey jacket.*

Misses and Women Sizes Included

866.620.2008 ASK@FABRICS-STORE.COM FABRICS-STORE.COM

---

# EVA PATTERN

---

*Eva is a long-sleeved, semi-fitted simple top with front waist tie closure. Optional buttons may be added for a “shirt” look. It can also be styled to wear hanging open for an airy, “cascading” cardigan effect.*

*Sized for ladies 0/2 to 28/30*

*Simple instructions for the confident beginner sewist.*

---

PICTURED: LAURA WEARING IL020 3.5 OZ BLEACHED SOFTENED LINEN.

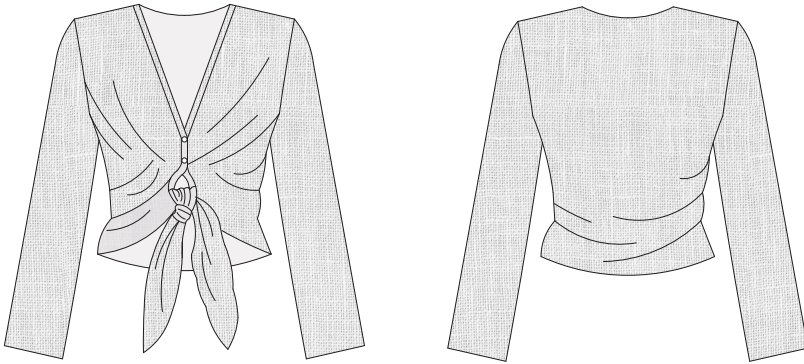


Our lovely model Laura is 5'10" and wearing size 4/6 of this pattern with sleeve adjusted to be a shorter 3/4 length.

# PATTERN DETAILS

## EVA TIE TOP

Sizes: 0/2 to 28/30



- Semi-fitted, loose at waist
- Long sleeves, semi-fitted
- Ties at front waist with “tails”
- 2 optional buttons at front neck
- Can be worn open
- Simple roll-hemmed edges
- Front placket edges to add buttons if desired.

## FABRICS & SUPPLIES

### Fabrics:

- Main fabric: medium weight linen For a light & airy feel, we enjoyed sewing this in our IL020 3.5 oz.

### Notions:

- Two optional buttons for closure at front neckline placket, size 3/8”-1/2” dia.

## SIZING & YARDAGE

**Misses/Women's Size Guide Based on Body Measurements in Inches**

Size	0/2	4/6	8/10	12/14	16/18	20/22	24/26	28/30
Bust	33-34	35-36	37-38	39-40	42-44	46-48	50-52	54-56
Waist	25-26	27-28	29-30	31-32	34-36	38-40	42-44	46-48
Hip	35-36	37-38	39-40	41-42	44-46	48-50	52-54	56-58

**Finished Garment Measurements - Approximate in Inches**

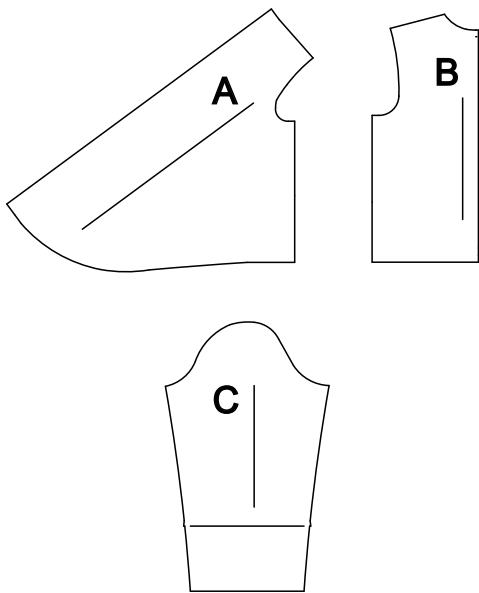
Size	0/2	4/6	8/10	12/14	16/18	20/22	24/26	28/30
Bust (tied + ease)	37	39	41	43	47	51	55	59
Full Sleeve Inseam	18	18 1/4	18 1/2	18 3/4	19	19 1/4	19 1/2	19 3/4
3/4 Sleeve Inseam	12 1/8	12 1/4	12 3/8	12 1/2	12 5/8	12 3/4	12 7/8	13
Back Neck to Waist	20	20 1/2	21	21 1/2	22	22 1/2	23	23 1/2
Wrist Opening	9	9 1/2	10	10 1/2	11	11 1/2	12	12 1/2

**Estimated Yardage - 54" Width Linen - Shrinkage Has Been Calculated**

Size	0/2	4/6	8/10	12/14	16/18	20/22	24/26	28/30
Main Fabric	2 yards				2.5 yards			

# PATTERN & CUTTING GUIDES

## PATTERN PIECE REFERENCE



A: FRONT BODICE - CUT 2 IN LINEN "FACE TO FACE"

B: BACK BODICE- CUT 1 IN LINEN "ON FOLD"

C: SLEEVE- CUT 2 IN LINEN "FACE TO FACE"

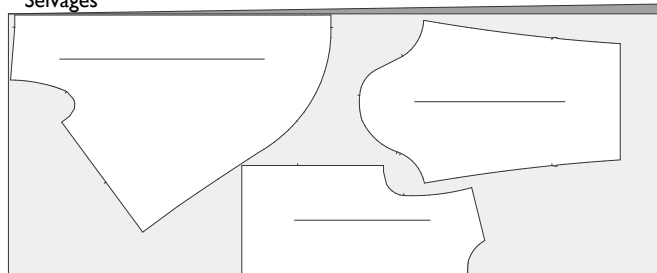


## CUTTING LAYOUT EXAMPLES

RIGHT SIDE OF PATTERN	BACK SIDE OF PATTERN	RIGHT SIDE OF FABRIC	WRONG SIDE OF FABRIC

Sizes 0 to 14 (example is size 14)

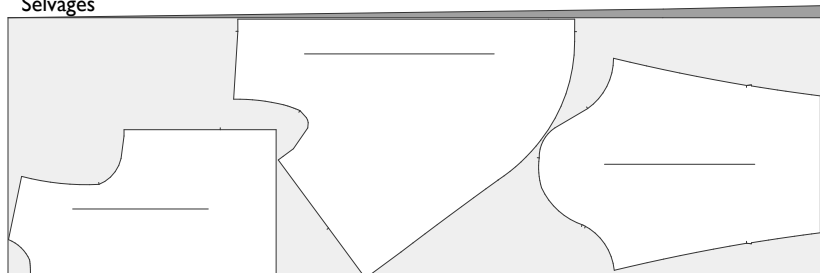
Selvages



Folded Edge

Sizes 16 to 30 (example is size 30)

Selvages



Folded Edge

---

## SEWING & PREPARATION TIPS:

Sewing with quality linen from Fabrics-Store is very enjoyable! Linen is a stable fabric that does not easily shift or slip, which is a very helpful characteristic for sewing a neat and even seam with little effort. You do not need to “push” or “pull” the fabric while sewing... just simply guide it.

*Pre-washing:* You will want to prewash and dry your linen fabric in the same manner you would your finished garment. This will soften your fabric, and eliminate further shrinkage in your final garment. If you plan on only dry cleaning your final garment, likewise you will want to dry clean the fabric before cutting and sewing. Secure the raw edges with a zig-zag stitch or serge before washing to avoid fraying. You may also sew the two raw edges together to form a continuous piece to avoid twisting in the wash. Remove fabric from dryer while it is still slightly moist. Press any deep creases or wrinkles using your iron's steam setting with high heat, using a protective press cloth if needed to avoid scorching.

*Fine Seaming:* To ensure that your seaming will last as long as your linen garment, we encourage “single-needle” tailoring and French seaming. Once you think of French seams as simply sewing the seam twice to encase the raw edges, you will see that it does not take that much more time than the second step of using a serger. Setting the stitch length on your sewing machine to 2mm (about 12-14 stitches per inch) makes for a very durable seam, and is also an attractive indication of fine tailoring.

*Alternate Seaming:* If you instead prefer to stitch your seams regularly and serge the raw edges, simply sew the seams with the full 5/8” allowance. You can then serge the raw edges, allowing the machine to trim 1/8” off the edges. This will result in seam allowances finishing at 1/2”.

*Pressing:* For best results, it is highly recommended that you press your seams as you finish sewing each of them. Pressing with a steam iron (and press cloth if needed) will help “set” the stitches into the fabric. You will find it is much easier to press your seams “as you go” instead of trying to press them all after the garment is finished.

*Sewing Glossary:* If certain sewing terms and techniques are new to you, please refer to the sewing glossary at the end of this document.

---

## SEWING INSTRUCTIONS:

1. Sew front placket edges: Turn under and press 5/8", and again at 5/8". Topstitch.
2. Hem back neck edges: Staystitch a scant 1/4" from raw edge. Turn under at the staystich line, and again another 1/4". Topstitch. This will create a small "rolled hem".
3. Sew shoulder seams and sides seams. If sewing with a French seam remember to start with wrong sides together, stitching a 1/4" seam for the first pass. Press seam to one side, fold right sides together encasing the raw edge. Do the second pass of the seam at 3/8". This is a total of 5/8". You can choose to do a regular seam of 5/8" with serged or zig-zagged edges.
4. Press shoulder and side seams toward the back. You may need to hand stitch the seam allowance down at the sides of the neck to keep neatly in place.
5. Staystitch the top of the sleeve 1/4" from the raw edge. Slightly ease as you stitch. This helps the sleeve head to not stretch out and more easily sew into the armhole.
6. Sew the sleeve inseams. Press the seam allowance toward the front. This way, the body seams will be towards the back and the sleeve seams will be towards the front. This will prevent having too much bulk in the armpit where the seams will cross.
7. Attach the sleeves into the armholes. You will find sewing in a sleeve using a French seam is surprisingly easy! If desired, you may sew a regular 5/8" seam.
8. Hem the bottom of the shirt and the sleeve: staystitch a scant 1/4" from raw edge. Turn under at the staystich line, and again another 1/4". Topstitch. This will create a small "rolled hem".
9. Optional: Sew one or two buttons and buttonholes as desired on to the front placket.

---

## Glossary:

**Basting Stitch:** A temporary hand or machine loose or long stitch to hold a seam in place before sewing the final permanent stitching.

**Bias grain:** In woven fabrics, this is the diagonal direction at 45 degrees to the grain and crossgrain. There are two bias directions in the cloth, perpendicular to each other.

**Buttonhole:** A slit in the fabric to fasten a button. The raw edges of the slit are finished with a machine or hand sewn zig-zag stitch.

**Ease stitch:** A row of stitching sewn just to the inside of a single layer of seam allowance. While stitching, coax the weave of the fabric with your finger or stylus to “compress” the fabric together. This creates a “gathering” effect without puckers. If desired, a second row of stitching can be done for more ease.

**Edge stitch:** A row of top stitching very close to a seamed edge or folded edge, usually about 1/16th of an inch.

**Fabric- right side:** The side of the fabric which will be the exposed, outside part of a garment.

**Fabric- wrong side:** The inside of the fabric which will be the unexposed side or inside of a garment.

**French seam:** A seam sewn in two steps to

encase the raw edges of the fabric within itself, giving a clean finish. 1- Wrong sides together, sew 1/4” seam. 2- Turn right sides together, stitch 3/8” seam. Total 5/8” seam allowance.

**Grainline- cross grain:** The direction of fabric going from selvage edge to selvage edge. In woven fabric, these would also be known as the weft threads of the weave.

**Grainline- on grain:** The direction of fabric running parallel to the selvage edge of the cloth. This is also referred to as the “lengthwise grain”. In woven fabric, these would also be known as the “warp” threads of the weave.

**Notch- outward:** Markings on the pattern that indicate an outward triangular cut outside the seam allowance. Notch markings will be arranged to show where two seam edges join properly together. A single wedge will often indicate a front piece, and 2 to 3 wedges together can indicate back pieces.

**Notch- snip:** Markings on the pattern that indicate a small “snip” into the seam allowance. Notch marking will be arranged to show where two seam edges join properly together. A single notch will often indicate a front piece, and 2 to 3 notches together can indicate back pieces.

**Overlock machine:** A specialized sewing machine designed to sew and cut along the raw edge of a fabric seam with a



---

## Glossary (continued):

networked stitch to secure the edges from fraying. Also known as a "serger" machine.

*Press cloth:* A piece of cloth used to lay over a garment to protect it while ironing from burning or scorching. Usually made of cotton or linen or wool.

*Raw edge:* The cut edge of fabric. If not secured with stitching or a finishing, the raw edge of a fabric can fray or unravel.

*Seam allowance:* The distance from the cut edge of a pattern piece to the sewing line. Seam allowances can vary, so be sure to double check the indicated amounts on your pattern.

*Stay stitch:* A row of stitching on a

single layer of the seam allowance edge to prevent stretching. You are neither pushing or pulling the fabric- just guiding. The row of stitching will be just to the inside of the permanent seam allowance width. For example, if the seam allowance is 5/8", your stay stitch will be 1/2" or a "scant" 5/8". You will want your permanent stitching to conceal the stay stitch.

*Understitch:* A row of stitching on a the seamed edge of facing. This prevents the facing from rolling out to the outside and keeps it neatly in place along the garment edge. The stitching will only go on the facing side, catching the seam allowance with it. The stitching will show on the facing, but not on the garment side.

### Test Square

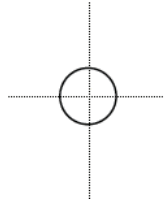
Outside line is 2 inches

Inside line is 5 cm

### PRINT ONLY THIS PAGE FIRST TO CHECK SCALE

IMPORTANT! PRINT AT ACTUAL SIZE, 100%, OR NO SCALING.

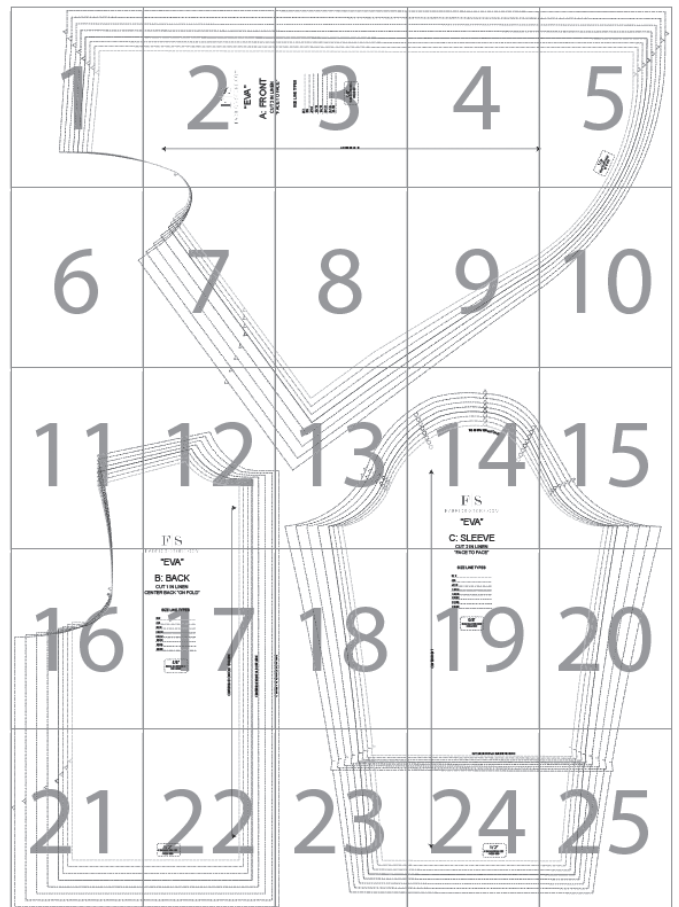
*Formatted for paper sizes A4 and Letter.*

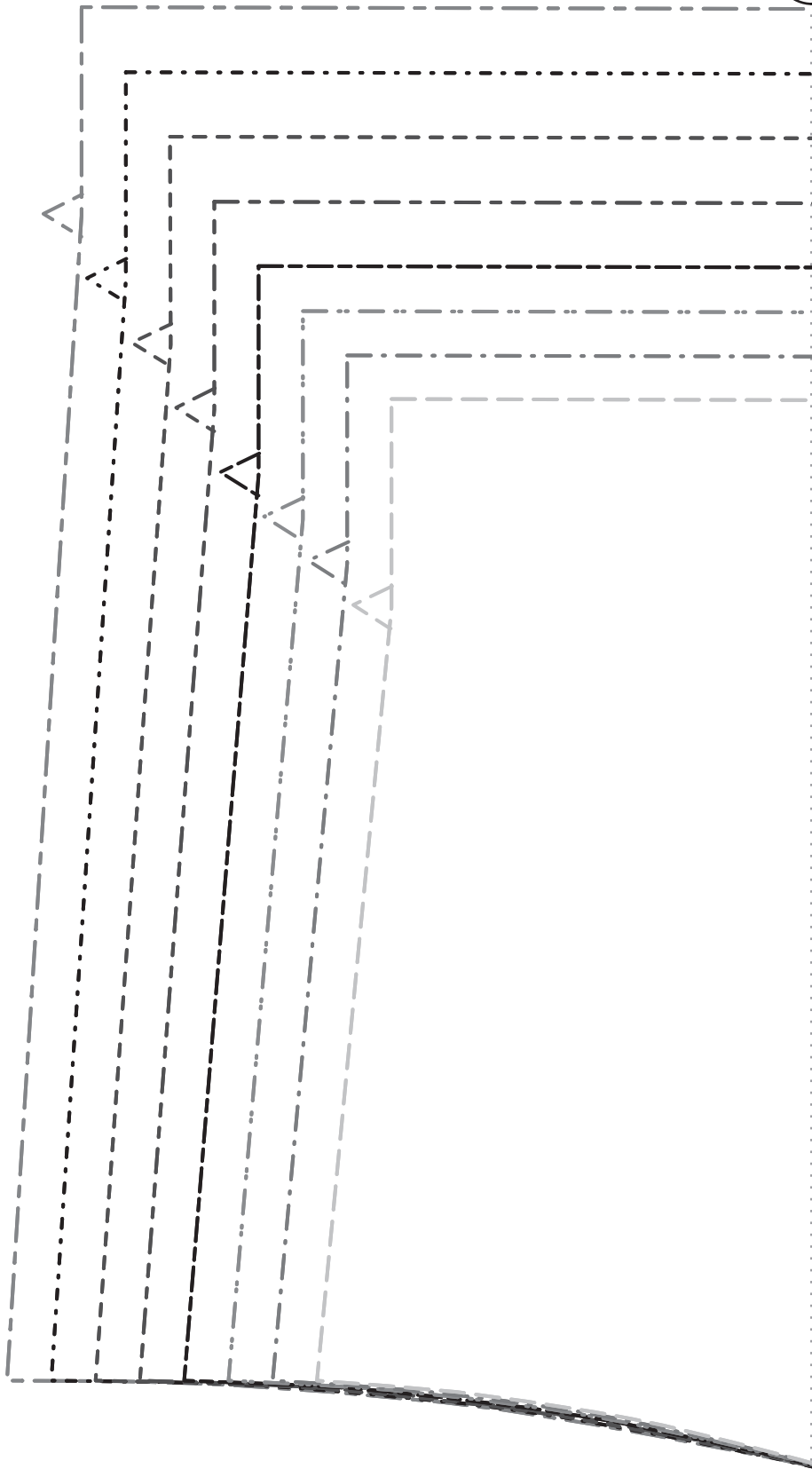


Simply overlap the page margins and align the markings in each corner to complete the circle and tape in place.

### Layered PDF:

This pattern has embedded layers so you can print all sizes or a single size. See your .pdf viewers 'Layers' menu.







**F | S**

FABRICS-STORE.COM

**“EVA”**

**A: FRONT**

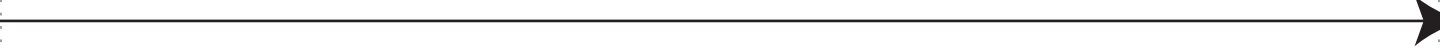
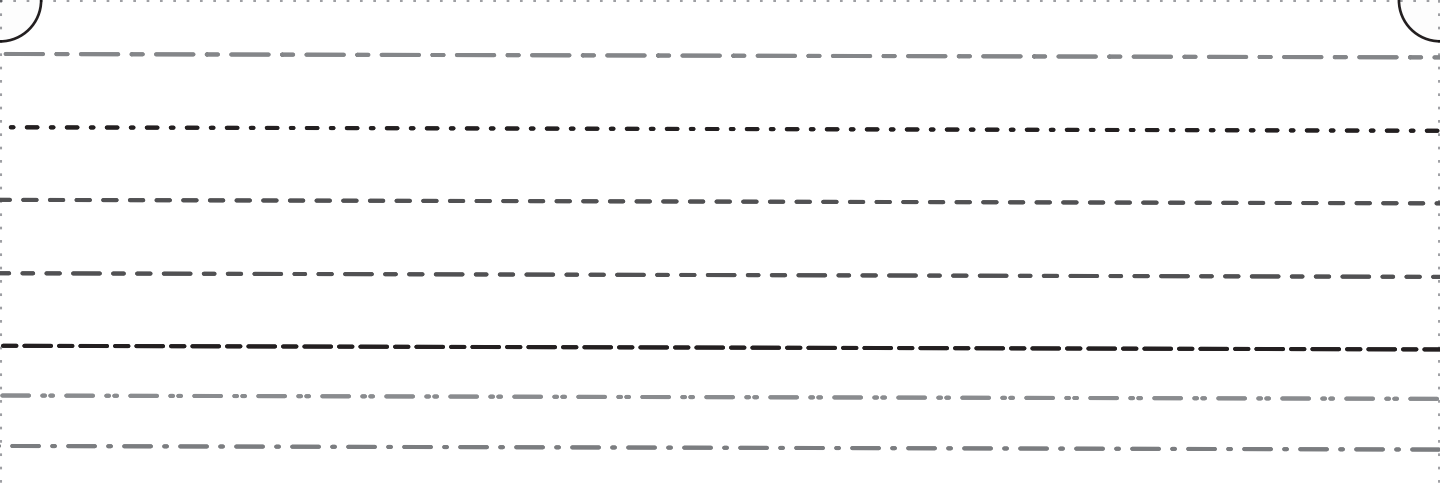
**CUT 2 IN LINEN**

SIZE LINE TYPES

- 0/2
- 4/6
- 8/10
- 12/14
- 16/18
- 20/22
- 24/26
- 28/30

5/8"  
SEAM ALLOWANCES  
INCLUDED

CENTER FRONT

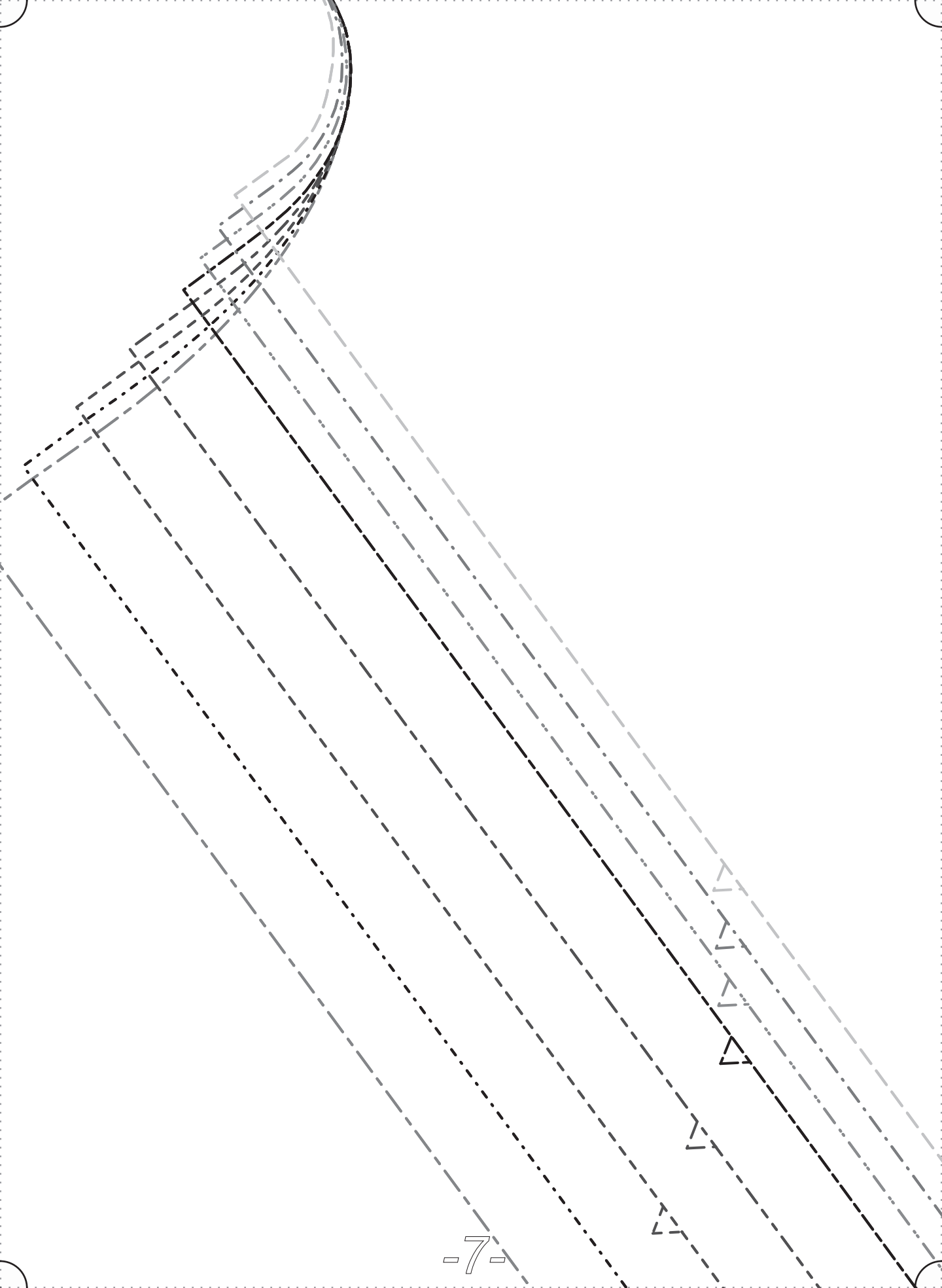


1/2"  
HEM ALLOWANCES  
INCLUDED

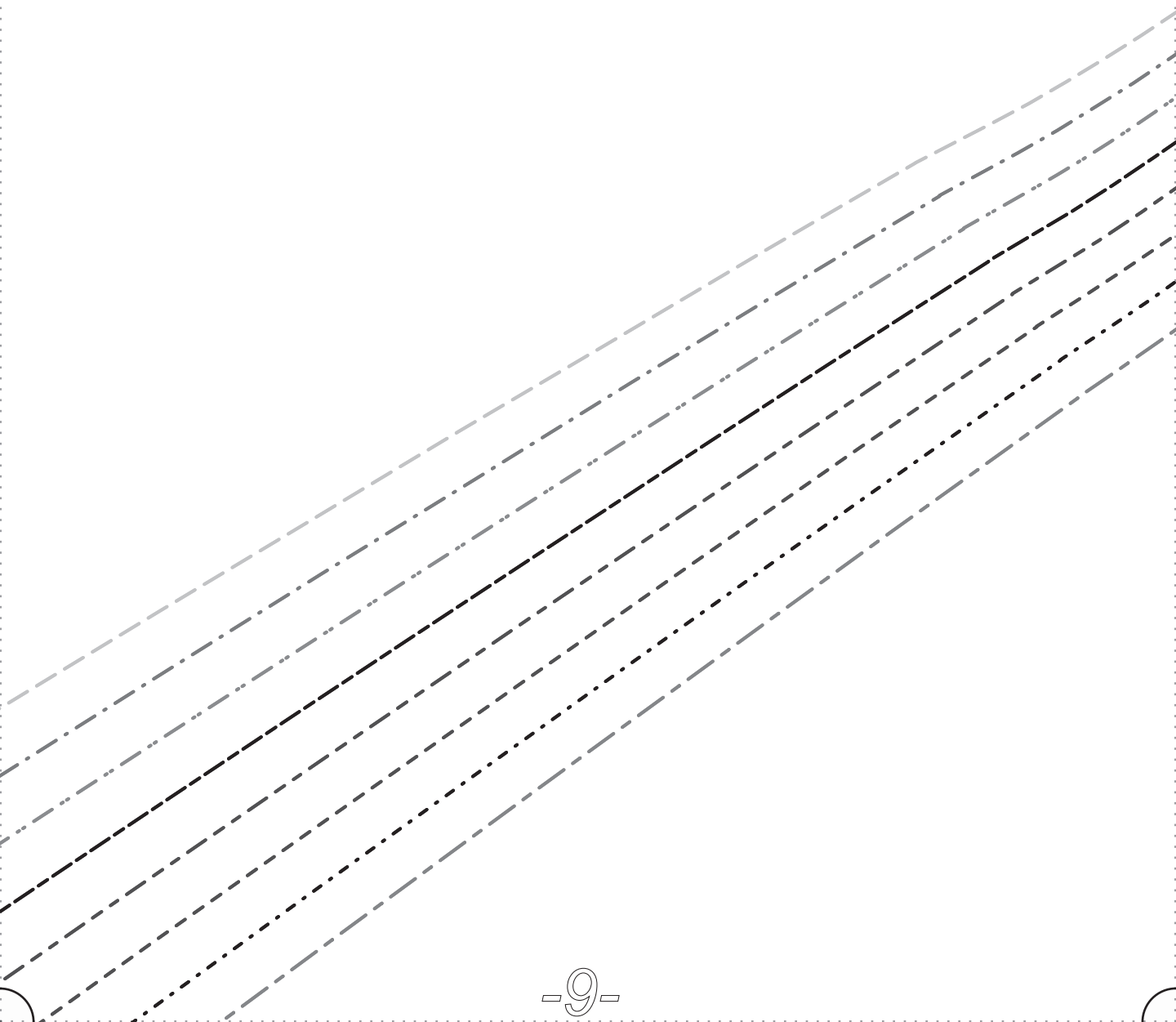


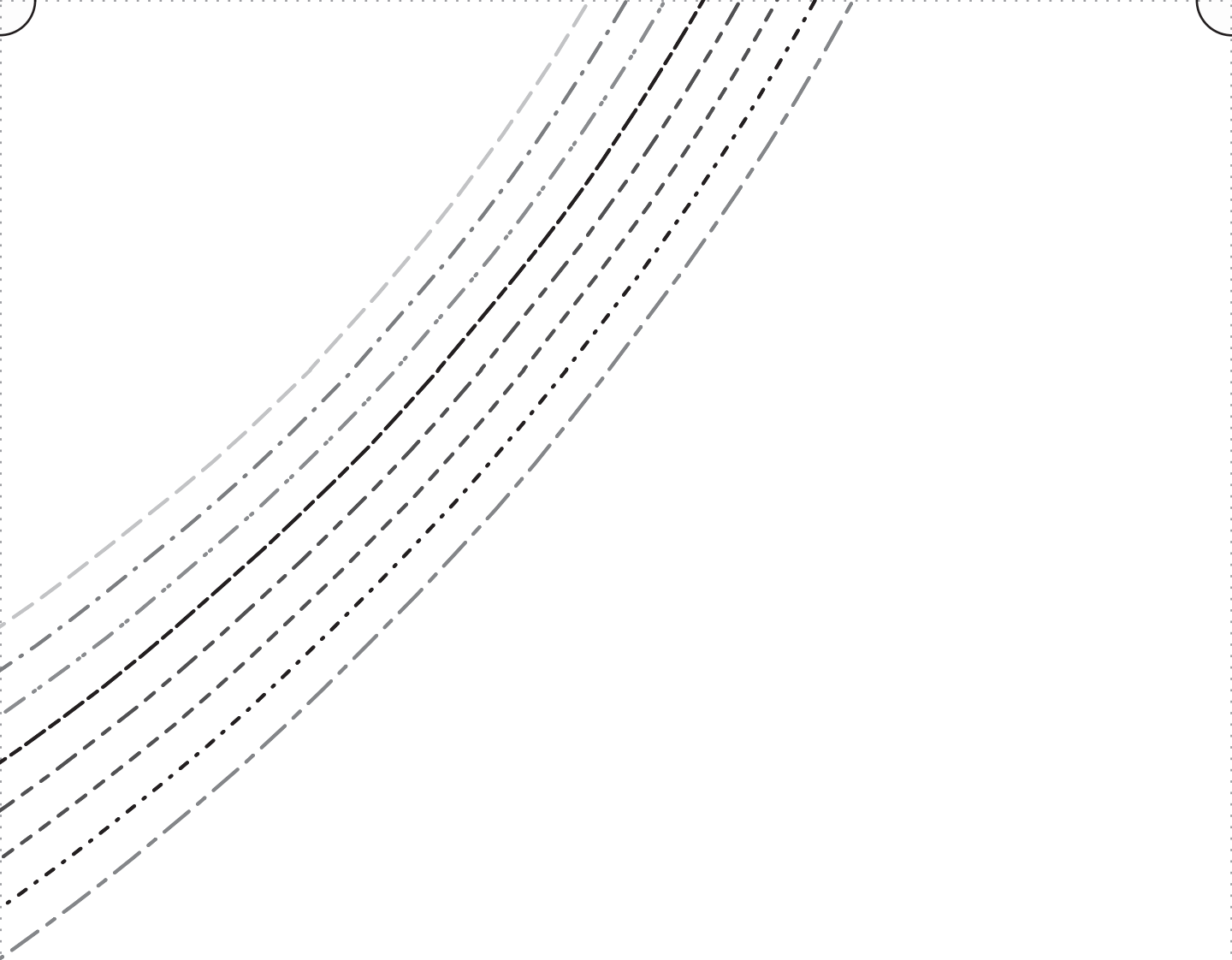


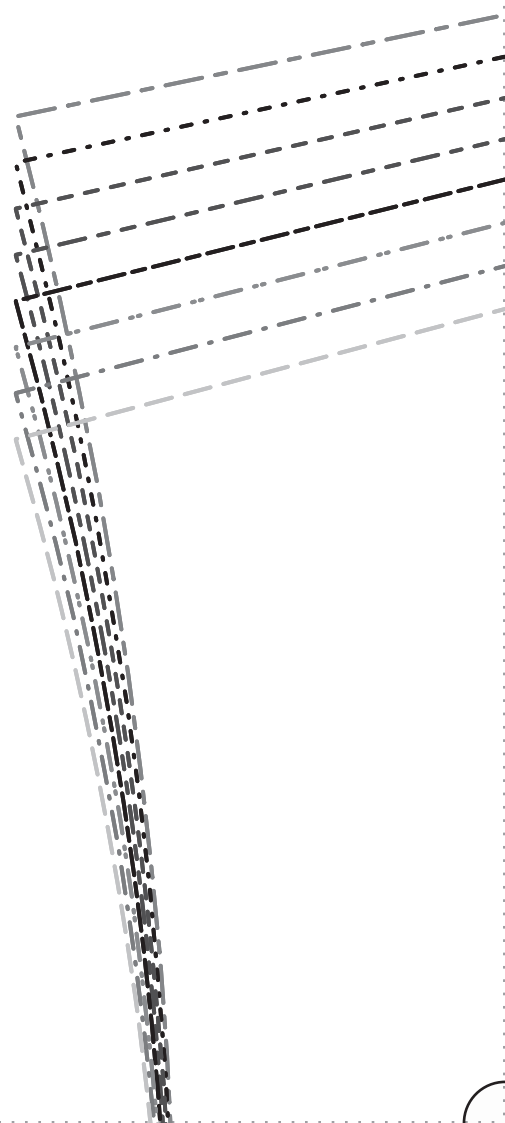


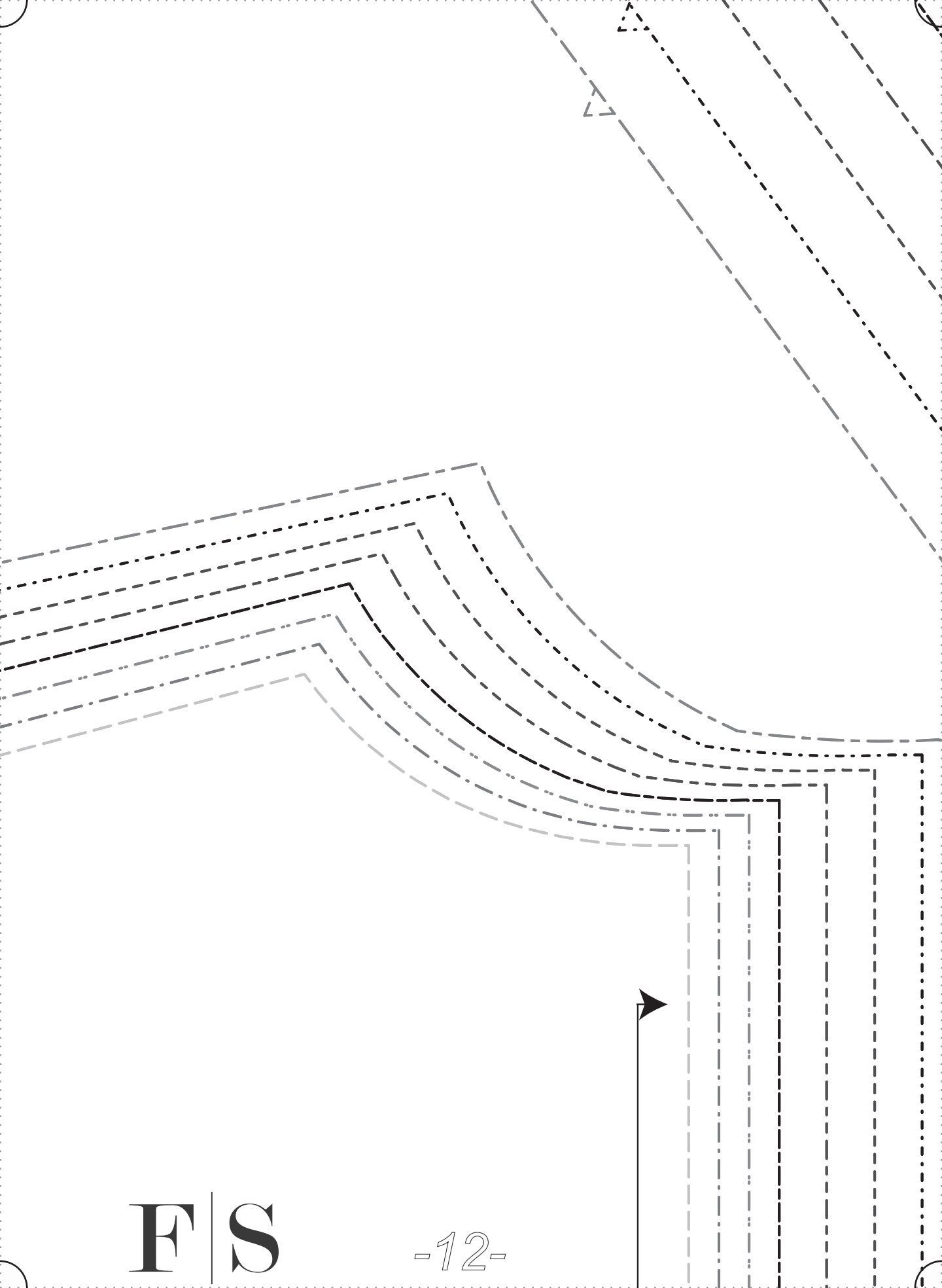




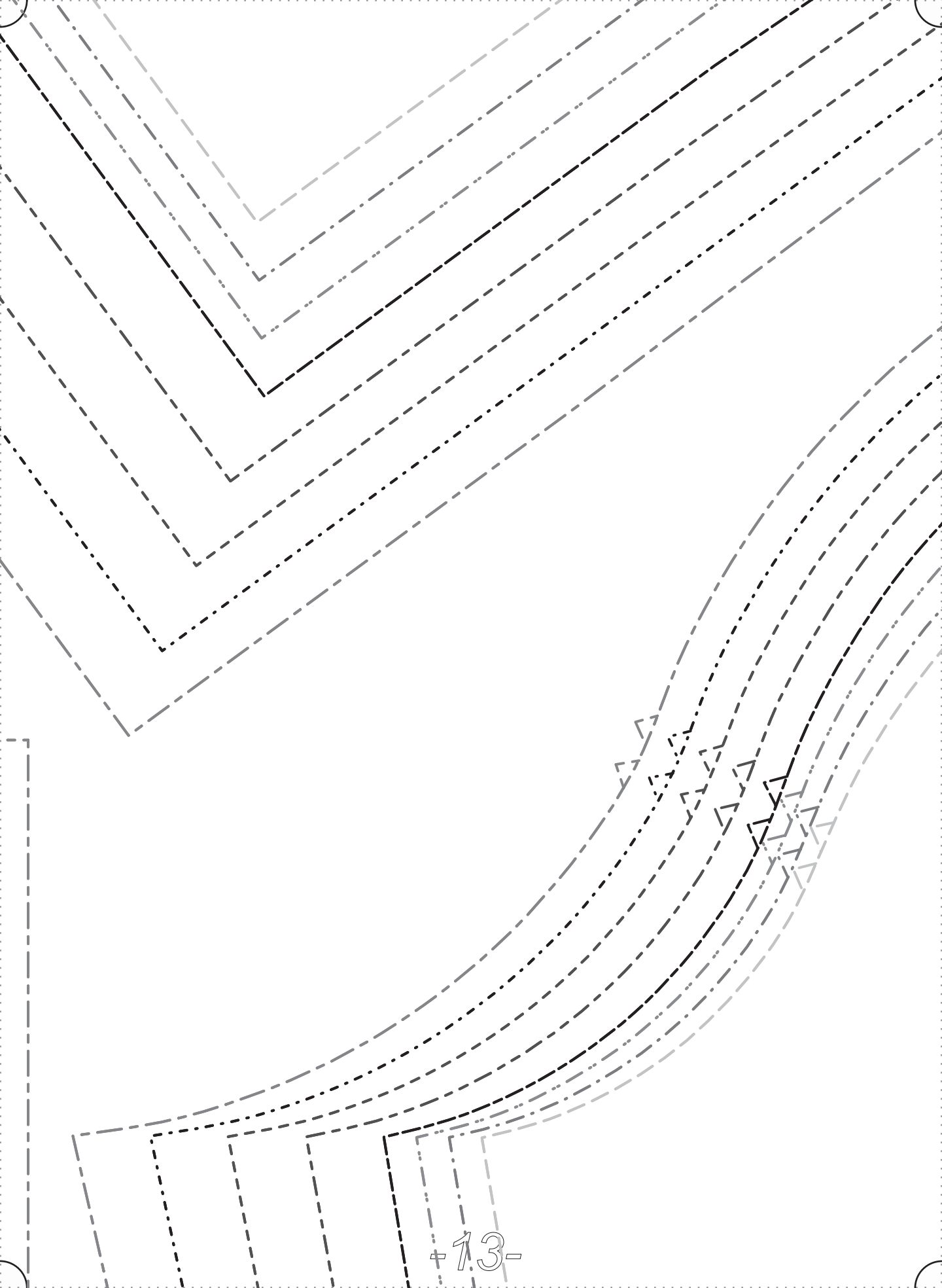


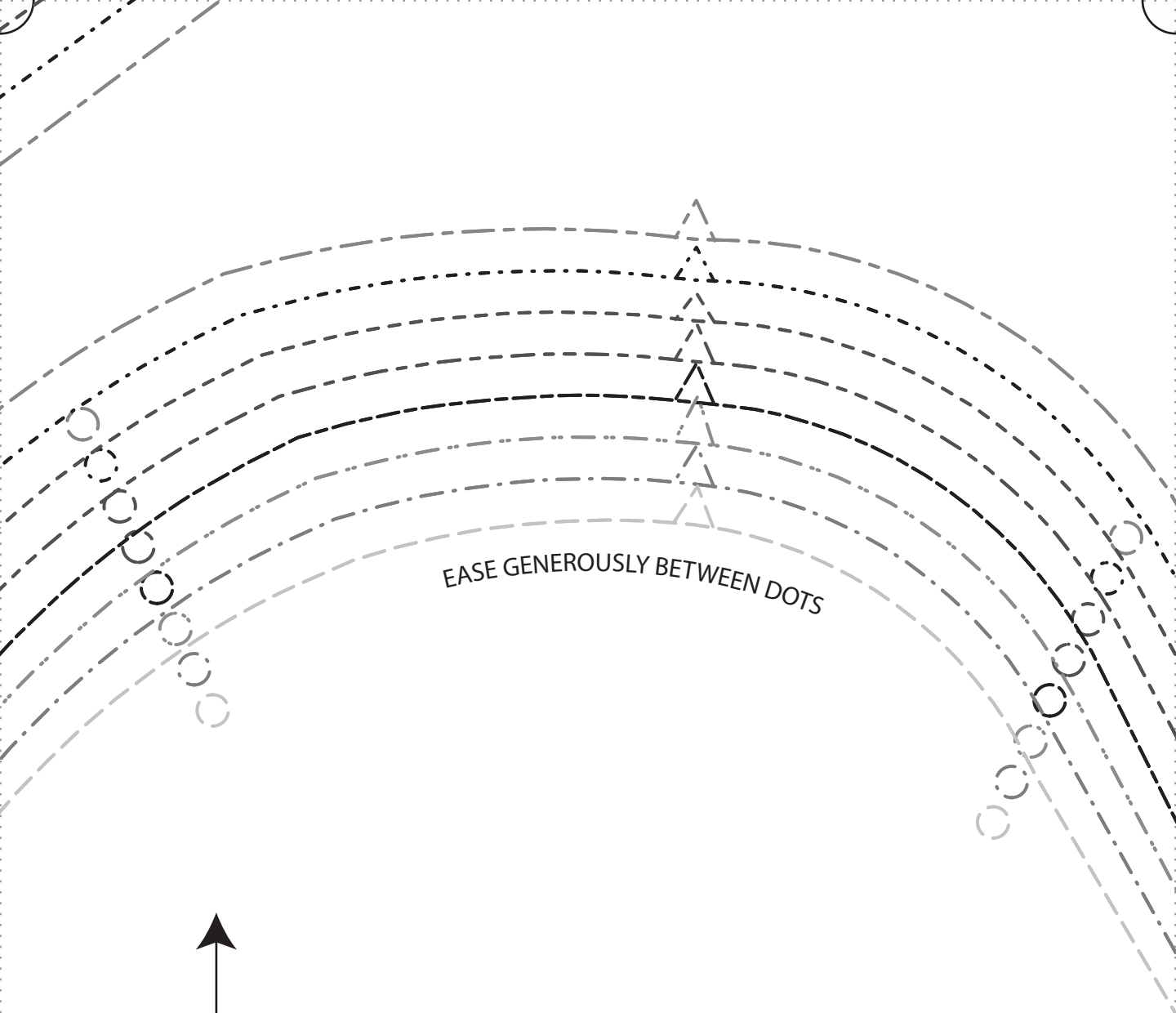






**F | S**





EASE GENEROUSLY BETWEEN DOTS

F | S

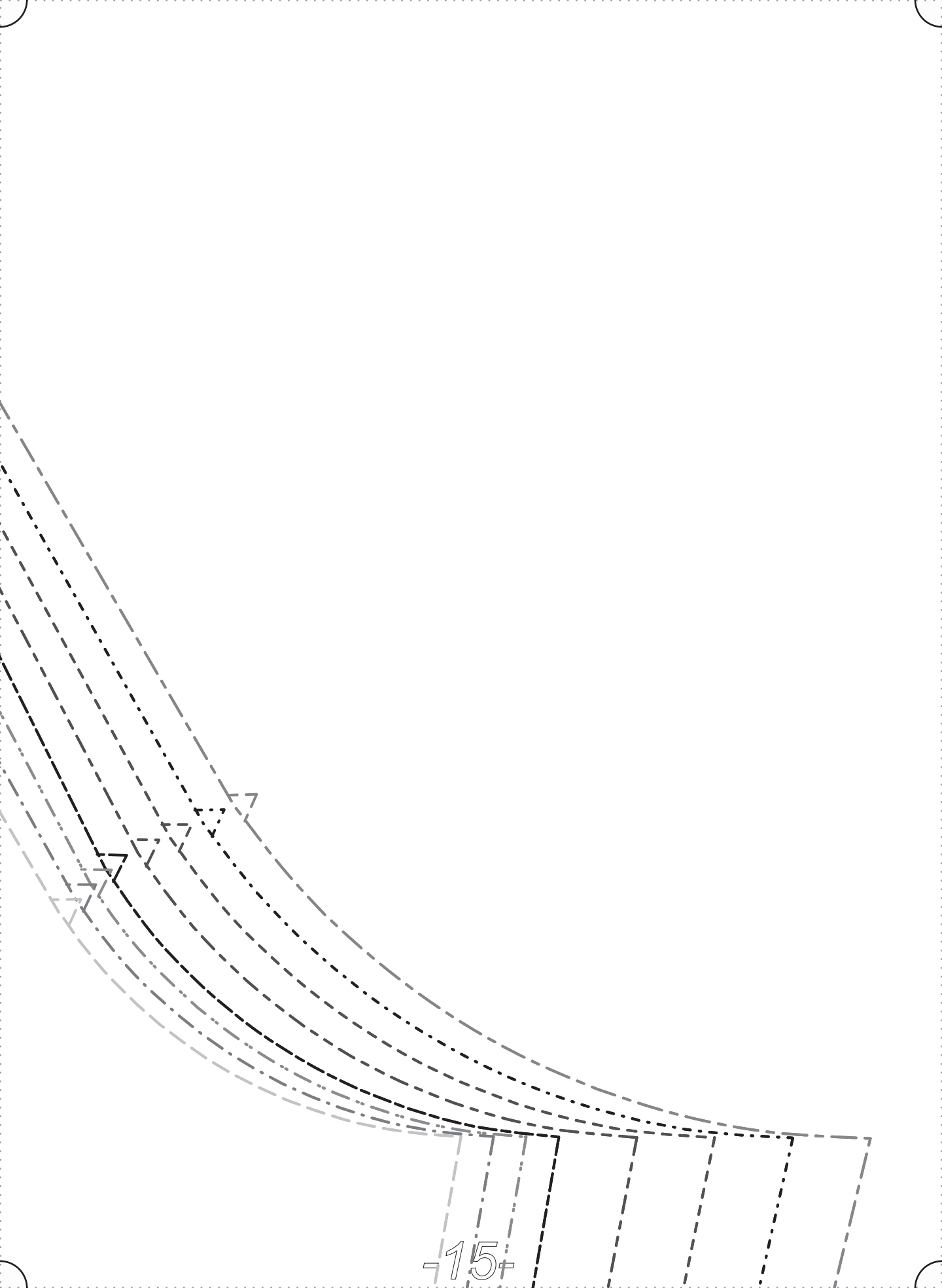
FABRICS-STORE.COM

“EVA”

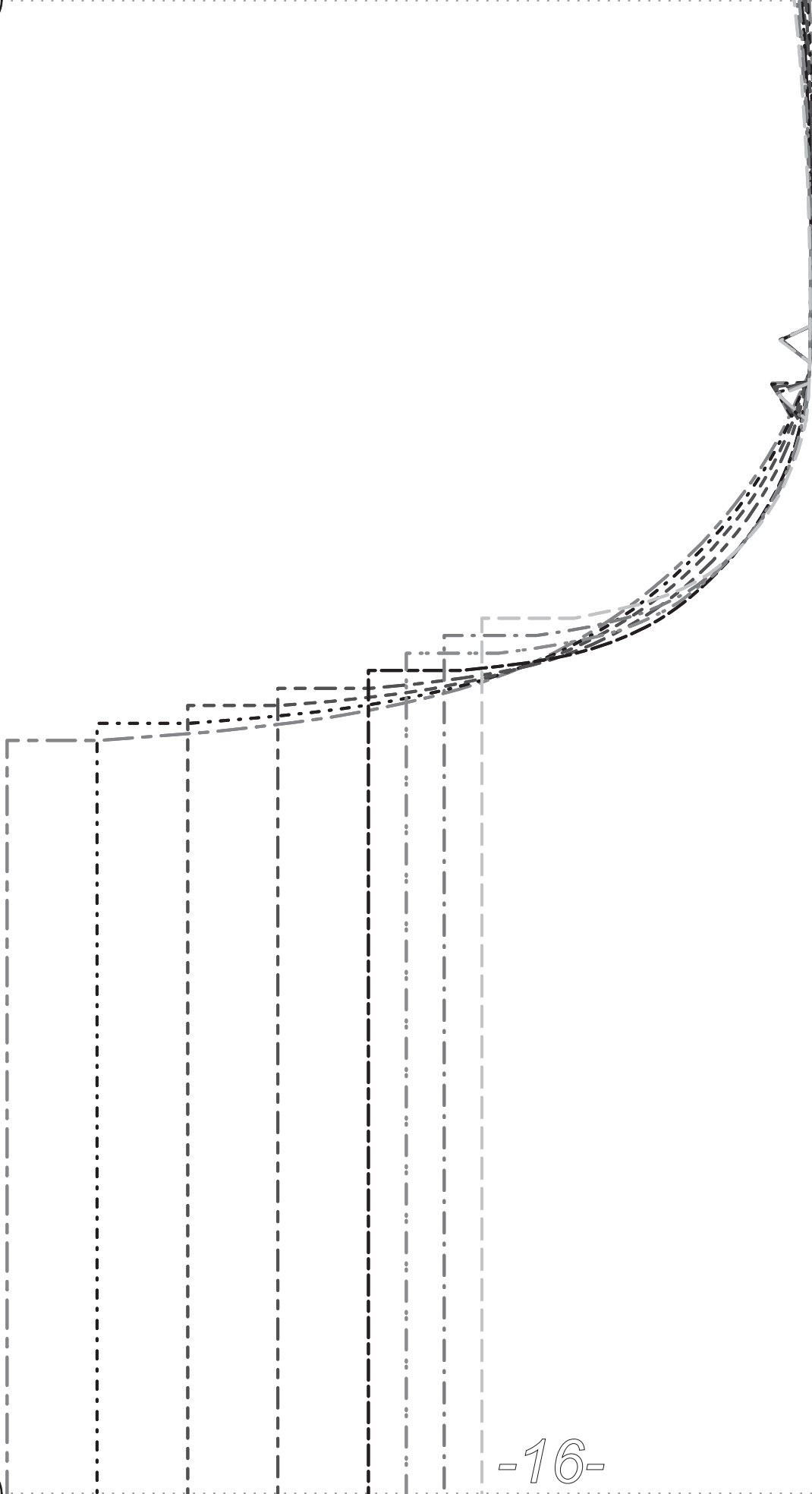
C: SLEEVE

CUT 14 IN LINEN





-15+



“EVA”

**B: BACK**

CUT 1 IN LINEN  
CENTER BACK “ON FOLD”

SIZE LINE TYPES

0/2 \_\_\_\_\_

4/6 \_\_\_\_\_

8/10 \_\_\_\_\_

12/14 \_\_\_\_\_

16/18 \_\_\_\_\_

20/22 \_\_\_\_\_

24/26 \_\_\_\_\_

28/30 \_\_\_\_\_

**5/8"**  
SEAM ALLOWANCES  
INCLUDED

CENTER BACK ON FOLD OF FABRIC

CENTER BACK ON FOLD OF FABRIC

CENTER BACK ON FOLD OF FABRIC

COPY 2 IN LINEN  
"FACE TO FACE"

SIZE LINE TYPES

0/2 \_\_\_\_\_

4/6 \_\_\_\_\_

8/10 \_\_\_\_\_

12/14 \_\_\_\_\_

16/18 \_\_\_\_\_

20/22 \_\_\_\_\_

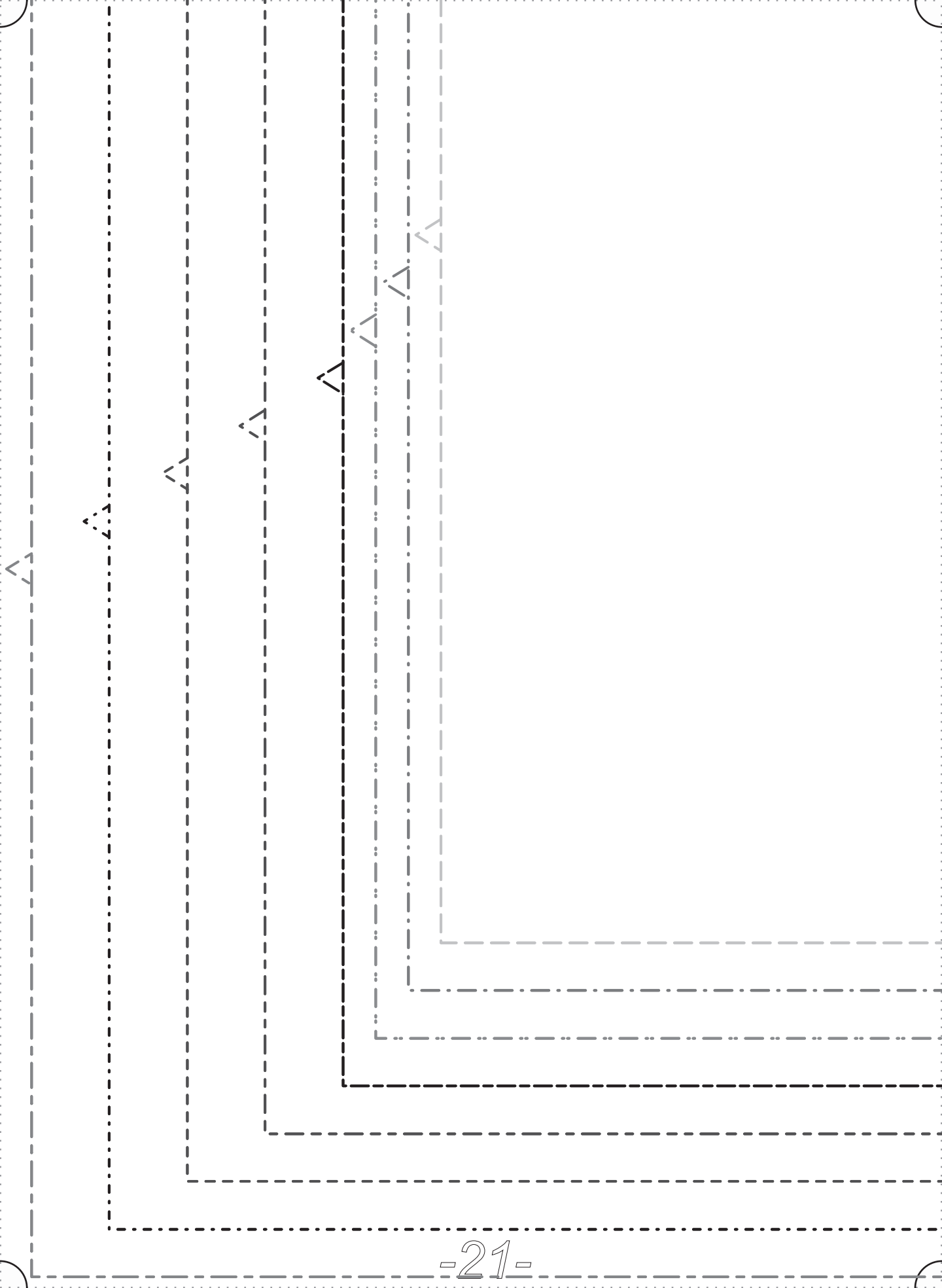
24/26 \_\_\_\_\_

28/30 \_\_\_\_\_

5/8"  
SEAM ALLOWANCES  
INCLUDED

CENTER FRONT

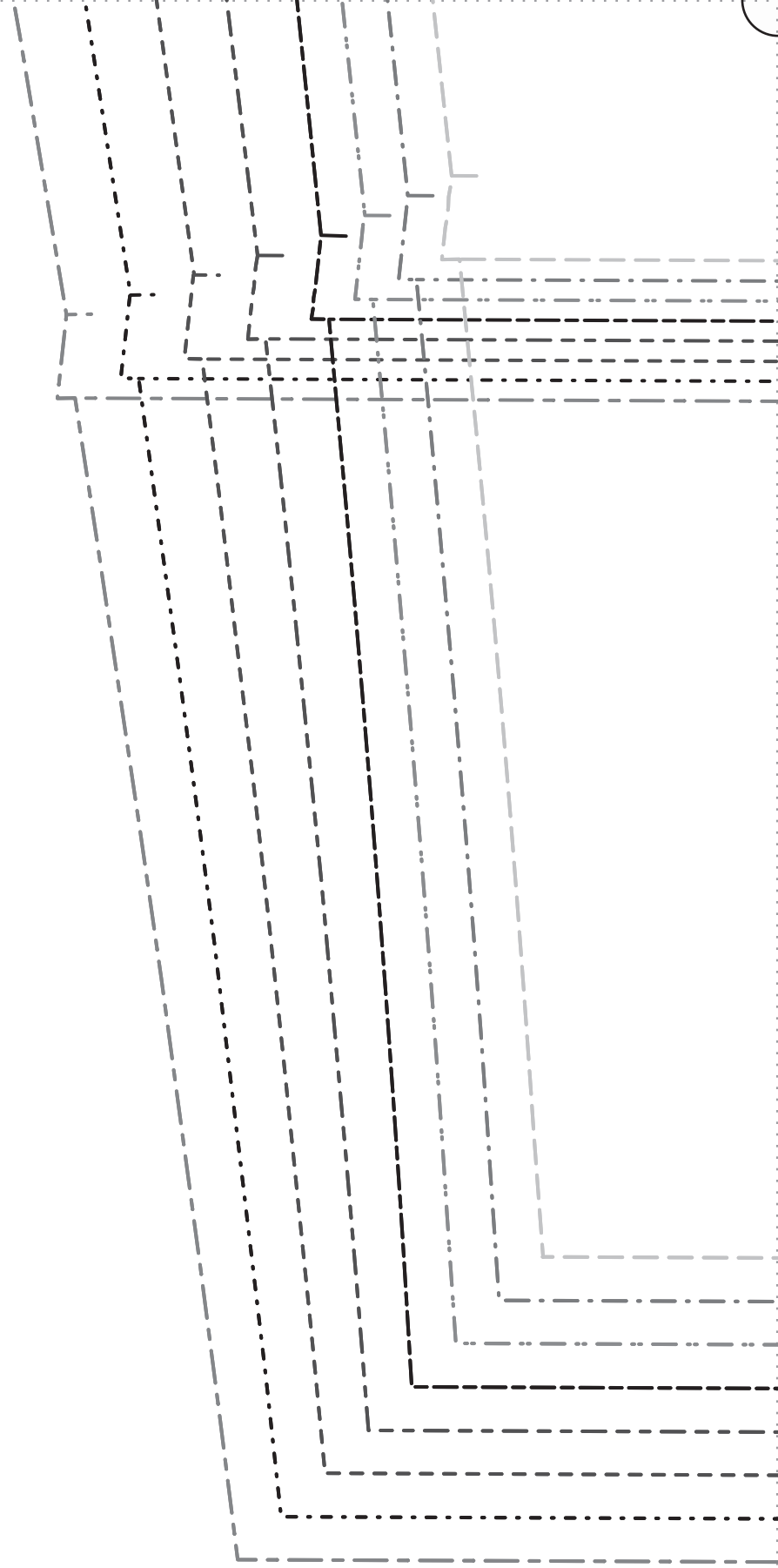




**1/2"**  
HEM ALLOWANCES  
INCLUDED



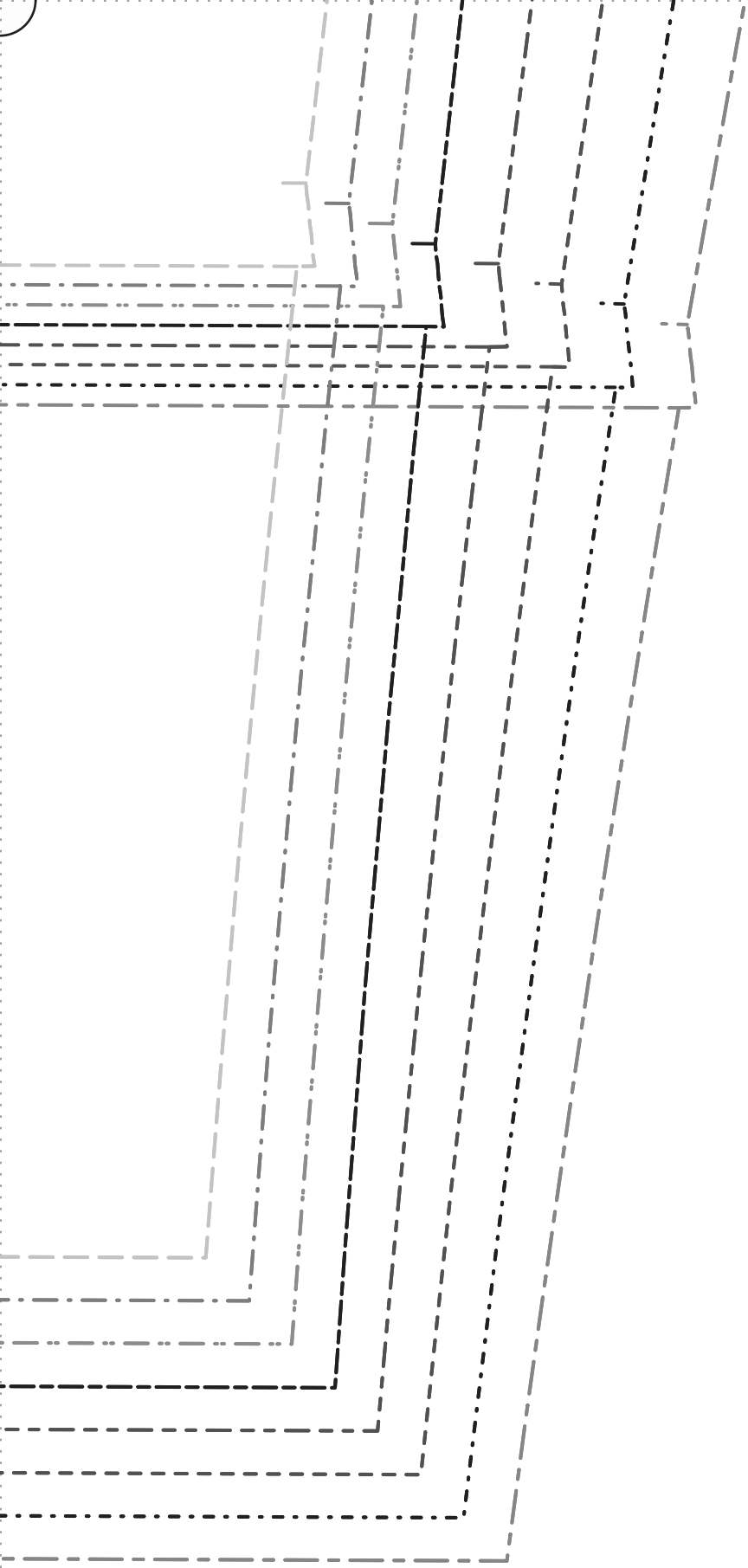




CUT HERE FOR 3/4 SLEEVE VERSION



1/2"  
HEM ALLOWANCES  
INCLUDED



---

---

# *Thank you*

---

*We work hard on making our patterns beautiful enough to meet your standards.*

*If you feel like sharing praise or helpful criticism, please send us your comments to [ask@fabrics-store.com](mailto:ask@fabrics-store.com).*