

F|S

FABRICS-STORE.COM

*Our linen is nothing short of addicting*

# EMILY DRESS



## RADIANT IN LINEN

*Understated linen luxury gets pretty with our twirling A-line wrap dress. Wear it to a summer gallery opening or garden party.*

Misses and Women Sizes Included

866.620.2008 ASK@FABRICS-STORE.COM FABRICS-STORE.COM

---

PICTURED: LAURA WEARING IL020 3.5 OZ LINEN IN POWER PINK.



Our lovely model Laura is 5'10" and wearing size 4/6 of this pattern with the following adjustments: Bodice lengthened 1.25", Sleeves lengthened 2".

---

# EMILY PATTERN

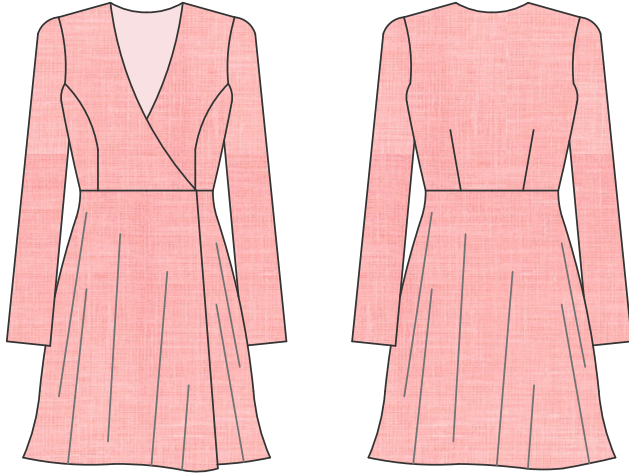
---

*Emily is a semi-tailored short wrap dress with a flared A-line skirt and fitted bodice with princess bust seams. Very flattering with an overlapping V-neckline, high waist and long sleeves.*

*Sized for ladies 0/2 to 28/30*

*Simple instructions for the intermediate sewist.*

# PATTERN DETAILS



## EMILY DRESS

Sizes: 0/2 to 28/30

- Wrap Front - Semi-fitted
- Long, straight set-in sleeves.
- Front bust princess seams.
- Flared A-Line skirt shape
- Bias strip facing in neckline
- Overlapping V-neckline
- Two hook & eyes to fasten at waist

## FABRICS & SUPPLIES

### Fabrics:

☐ Main fabric: light or medium weight linen. We sampled Emily in our IL020 a lighter weight of 3.5 ounces this 100% linen is woven with finer threads to give it a smoother appearance.

### Notions:

☐ Two hook & eyes for waist (or buttons if desired).

## SIZING & YARDAGE

**Misses/Women's Size Guide Based on Body Measurements in Inches**

Size	0/2	4/6	8/10	12/14	16/18	20/22	24/26	28/30
Bust	33-34	35-36	37-38	39-40	42-44	46-48	50-52	54-56
Waist	25-26	27-28	29-30	31-32	34-36	38-40	42-44	46-48
Hip	35-36	37-38	39-40	41-42	44-46	48-50	52-54	56-58

**Finished Garment Measurements - Approximate in Inches**

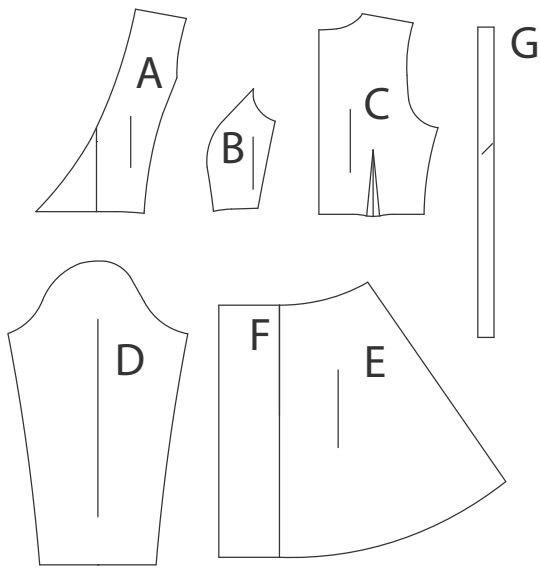
Size	0/2	4/6	8/10	12/14	16/18	20/22	24/26	28/30
Bust	35	37	39	41	45	49	53	57
Waist (high)	26.5	28.5	30.5	32.5	36.5	40.5	44.5	48.5
Hips	42	44	46	48	52	56	60	64
Dress Length	35	35 1/4	35 5/9	35 7/8	36 1/3	36 3/4	37 1/6	37 3/5
Sleeve Inseam	17 3/8	17 7/8	18 3/8	18 7/8	19 3/8	19 7/8	20 3/8	20 7/8

**Estimated Yardage - 54" Width Linen - Shrinkage Has Been Calculated**

3 yards all sizes

# PATTERN & CUTTING GUIDES

## PATTERN PIECE REFERENCE

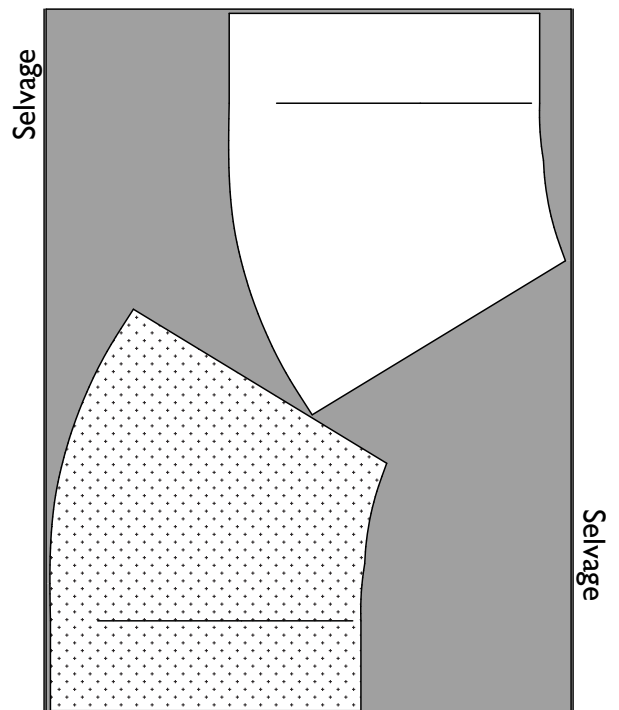
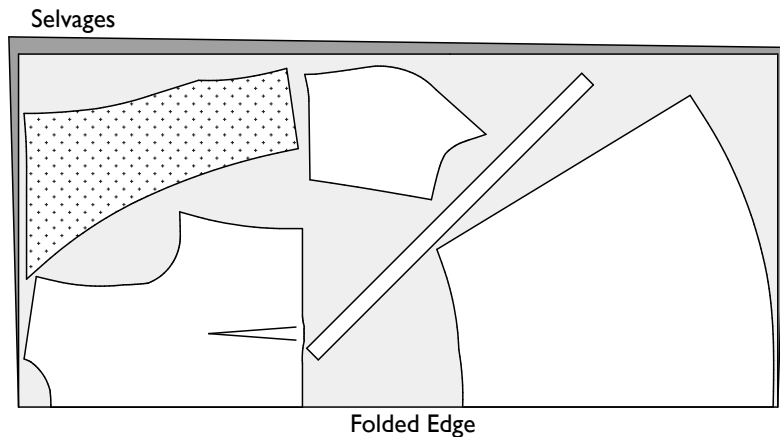


- A: FRONT BODICE -  
CUT 2 IN LINEN "FACE TO FACE"
- B: SIDE FRONT BODICE -  
CUT 2 IN LINEN "FACE TO FACE"
- C: BACK -  
CUT 1 IN LINEN CENTER BACK "ON FOLD"
- D: SLEEVE -  
CUT 2 IN LINEN "FACE TO FACE"
- E: BACK SKIRT-  
CUT 1 IN LINEN CENTER BACK "ON FOLD"
- F: FRONT SKIRT-  
CUT 2 IN LINEN "FACE TO FACE"
- G: BIAS STRIP-  
CUT 2 IN LINEN

## CUTTING LAYOUT EXAMPLES

RIGHT SIDE OF PATTERN	BACK SIDE OF PATTERN	RIGHT SIDE OF FABRIC	WRONG SIDE OF FABRIC

Cutting layout guide: all sizes  
Example is size 30



---

## SEWING & PREPARATION TIPS:

Sewing with quality linen from Fabrics-Store is very enjoyable! Linen is a stable fabric that does not easily shift or slip, which is a very helpful characteristic for sewing a neat and even seam with little effort. You do not need to “push” or “pull” the fabric while sewing... simply guide it.

*Pre-washing:* You will want to prewash and dry your linen fabric in the same manner you would your finished garment. This will soften your fabric, and eliminate further shrinkage in your final garment.

If you plan on only dry cleaning your final garment, likewise you will want to dry clean the fabric before cutting and sewing. Secure the raw edges with a zig-zag or serger stitch before washing to avoid fraying. You may also sew the two raw edges together to form a continuous piece to avoid twisting in the wash. Remove fabric from dryer while it is still slightly moist. Press any deep creases or wrinkles using your iron's steam setting with high heat, using a protective press cloth if needed to avoid scorching.

*Fine Seaming:* To ensure that your seaming will last as long as your linen garment, we encourage “single-needle” tailoring and French seaming. Once you think of French seams as simply sewing the seam twice to encase the raw edges, you will see that it does not take that much more time than the second step of using a serger. Setting the stitch length on your sewing machine to 2mm (about 12-14 stitches per inch) makes for a very durable seam, and is also an attractive indication of fine tailoring.

*Alternate Seaming:* If you instead prefer to stitch your seams regularly and serge the raw edges, simply sew the seams with the full 5/8” allowance. You can then serge the raw edges, allowing the machine to trim 1/8” off the edges. This will result in seam allowances finishing at 1/2”.

*Pressing:* For best results, it is highly recommended that you press your seams as you finish sewing each of them. Pressing with a steam iron (and press cloth if needed) will help “set” the stitches into the fabric. You will find it is much easier to press your seams “as you go” instead of trying to press them all after the garment is finished.

*Sewing Glossary:* If certain sewing terms and techniques are new to you, please refer to the sewing glossary at the end of this document.

---

## SEWING INSTRUCTIONS:

1. Sew front bust princess seams. Carefully ensure that you have a “left” and a “right. 5/8” seam allowances included. This will permit sewing French seams, or if desired, a regular seam with serged edges.
2. Sew the back bodice darts.
3. Staystitch the edges of the neckline to prevent stretching.
4. Sew the shoulders and side seams of the bodice. Press the finished seam allowances towards the back.
5. Sew the sleeve inseams. Press the finished seam allowances towards the front.
6. Staystitch the seam allowance of the sleeve 1/2” from the raw edge to prevent stretching. Ease-stitch the sleeve head slightly.
7. Sew the sleeve into the armhole.
8. Join the bias strips together to have one continuous piece.
9. Sew the bias strip to the inside of the neckline to create a narrow, clean finished facing: Simply sew one edge of the bias to the neckline with 1/4” seam, right sides together. Press to the inside and understitch the bias facing. Fold under the other raw edge leaving about a 3/8” wide facing. Trim any excess if needed. Topstitch the facing in place.
10. Sew the side seams of the skirt.
11. Hem the vertical open edges of the skirt. To do this, turn under and press 1/4”, then again 3/8” and press. Topstitch at 3/8”.
12. Attach the skirt waist to the bodice waist.
13. Hem the bottom of the sleeve and skirt in the same manner as the skirt opening.
14. Sew hooks & eyes or buttons & loops into the waist overlap area.

---

## Glossary:

**Basting Stitch:** A temporary hand or machine loose or long stitch to hold a seam in place before sewing the final permanent stitching.

**Bias grain:** In woven fabrics, this is the diagonal direction at 45 degrees to the grain and crossgrain. There are two bias directions in the cloth, perpendicular to each other.

**Buttonhole:** A slit in the fabric to fasten a button. The raw edges of the slit are finished with a machine or hand sewn zig-zag stitch.

**Ease stitch:** A row of stitching sewn just to the inside of a single layer of seam allowance. While stitching, coax the weave of the fabric with your finger or awl to “compress” the fabric together. This creates a “gathering” effect without puckers. If desired, a second row of stitching can be done for more ease.

**Edge stitch:** A row of top stitching very close to a seamed edge or folded edge, usually about 1/16th of an inch.

**Fabric- right side:** The side of the fabric which will be the exposed, outside part of a garment.

**Fabric- wrong side:** The inside of the fabric which will be the unexposed side or inside of a garment.

**French seam:** A seam sewn in two steps to encase the raw edges of the fabric within itself, giving a clean finish. 1- Wrong sides together, sew 1/4” seam. 2- Turn right sides together, stitch 3/8” seam. Total 5/8” seam allowance.

**Grainline- cross grain:** The direction of fabric going from selvage edge to selvage edge. In woven fabric, these would also be known as the weft threads of the weave.

**Grainline- on grain:** The direction of fabric running parallel to the selvage edge of the cloth. This is also referred to as the “lengthwise grain”. In woven fabric, these would also be known as the “warp” threads of the weave.

**Notch- outward:** Markings on the pattern that indicate an outward triangular cut outside the seam allowance. Notch markings will be arranged to show where two seam edges join properly together. A single wedge will often indicate a front piece, and 2 to 3 wedges together can indicate back pieces.

**Notch- snip:** Markings on the pattern that indicate a small “snip” into the seam allowance. Notch marking will be arranged to show where two seam edges join properly together. A single notch will often indicate a front piece, and 2 to 3 notches together can indicate back pieces.



---

## Glossary (continued):

*Overlock machine:* A specialized sewing machine designed to sew and cut along the raw edge of a fabric seam with a networked stitch to secure the edges from fraying. Also known as a "serger" machine.

*Press cloth:* A piece of cloth used to lay over a garment to protect it while ironing from burning or scorching. Usually made of cotton or linen or wool.

*Raw edge:* The cut edge of fabric. If not secured with stitching or a finishing, the raw edge of a fabric can fray or unravel.

*Seam allowance:* The distance from the cut edge of a pattern piece to the sewing line. Seam allowances can vary, so be sure to double check the indicated amounts on your pattern.

*Stay stitch:* A row of stitching on a single layer of the seam allowance edge to prevent stretching. You are neither pushing or pulling the fabric- just guiding. The row of stitching will be just to the inside of the permanent seam allowance width. For example, if the seam allowance is 5/8", your stay stitch will be 1/2" or a "scant" 5/8". You will want your permanent stitching to conceal the stay stitch.

*Understitch:* A row of stitching on a the seamed edge of facing. This prevents the facing from rolling out to the outside and keeps it neatly in place along the garment edge. The stitching will only go on the facing side, catching the seam allowance with it. The stitching will show on the facing, but not on the garment side.

2 Inch  
Square to  
Check Print  
Accuracy

**PRINT ONLY THIS PAGE FIRST TO CHECK SCALE**

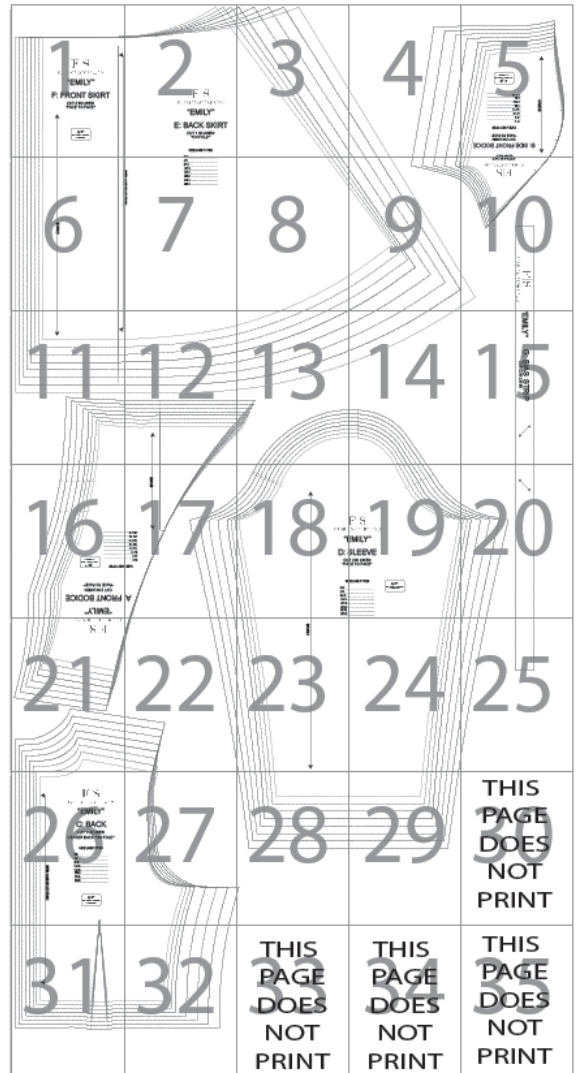
IMPORTANT! PRINT AT ACTUAL SIZE OR 100% SCALE

*Formatted for paper sizes A4 and Letter.*

Simply overlap the page margins and align the markings in each corner to complete the circle and tape in place.



**Layered PDF:**  
This pattern has embedded layers so you can print all sizes or a single size. See your .pdf viewers 'Layers' menu.



F | S

FABRICS-STORE.COM

“EMILY”

F: FRONT SKIRT

CUT 2 IN LINEN  
“FACE TO FACE”

5/8"  
SEAM ALLOWANCES  
INCLUDED

1



F|S

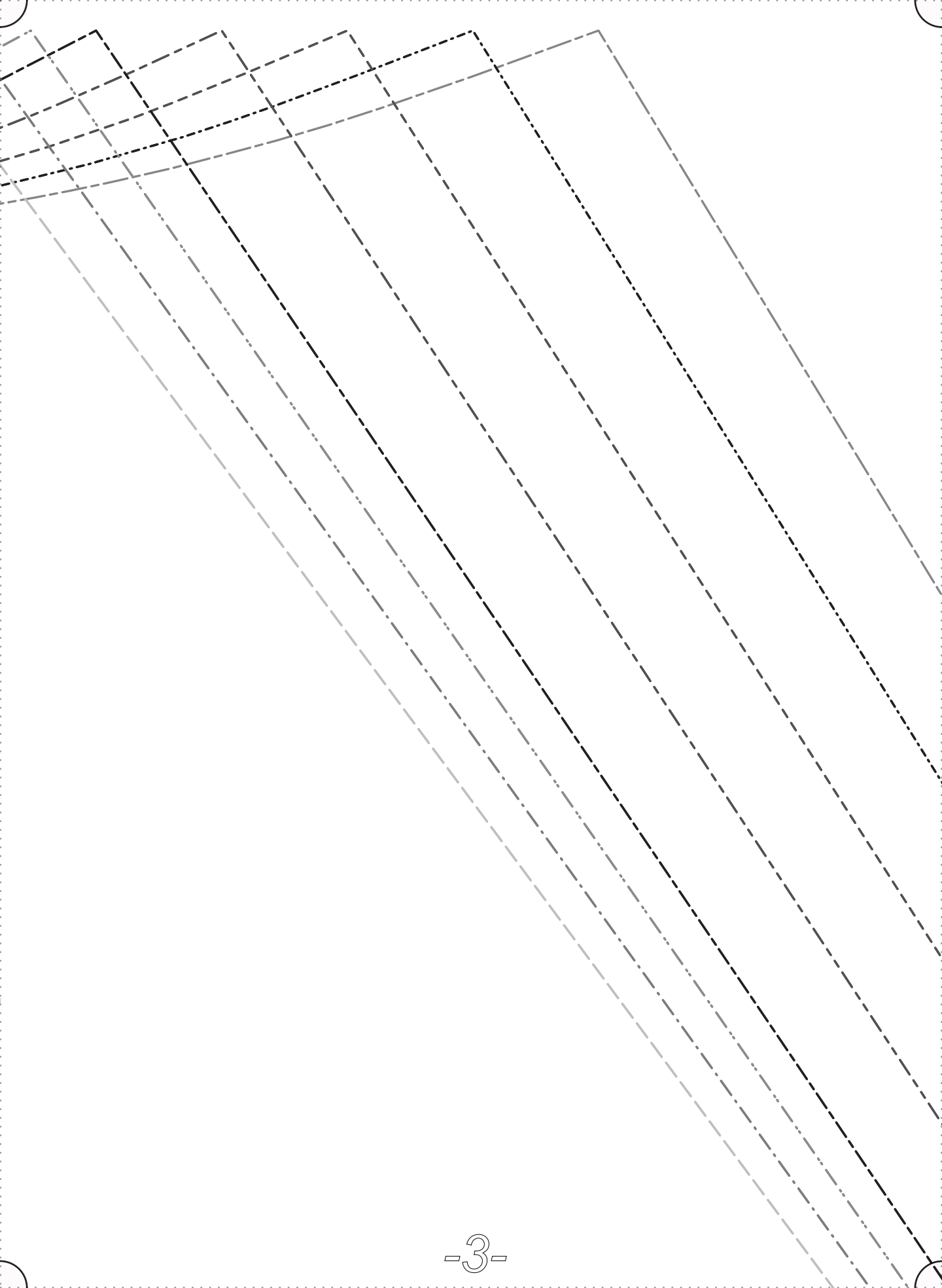
FABRICS-STORE.COM

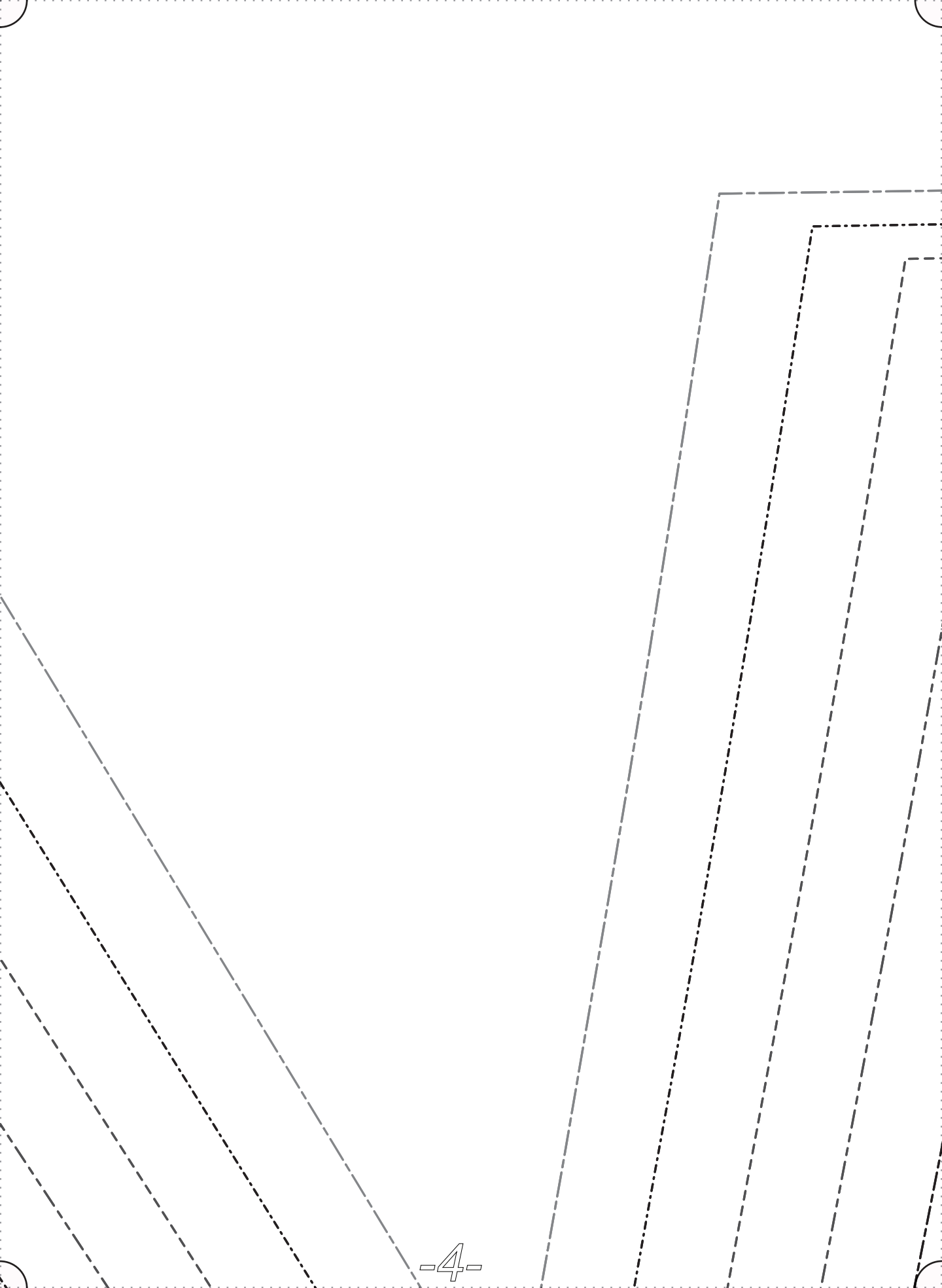
“EMILY”

E: BACK SKIRT

CUT 1 IN LINEN  
“ON FOLD”

SIZE LINE TYPES





# B: SIDE FRONT BODICE

CUT 2 IN LINEN  
"FACE TO FACE"

SIZE LINE TYPES

0/2	-----
4/6	-----
8/10	-----
12/14	-----
16/18	-----
20/22	-----
24/26	-----
28/30	-----

5/8"  
SEAM ALLOWANCES  
INCLUDED

GRAINLINE

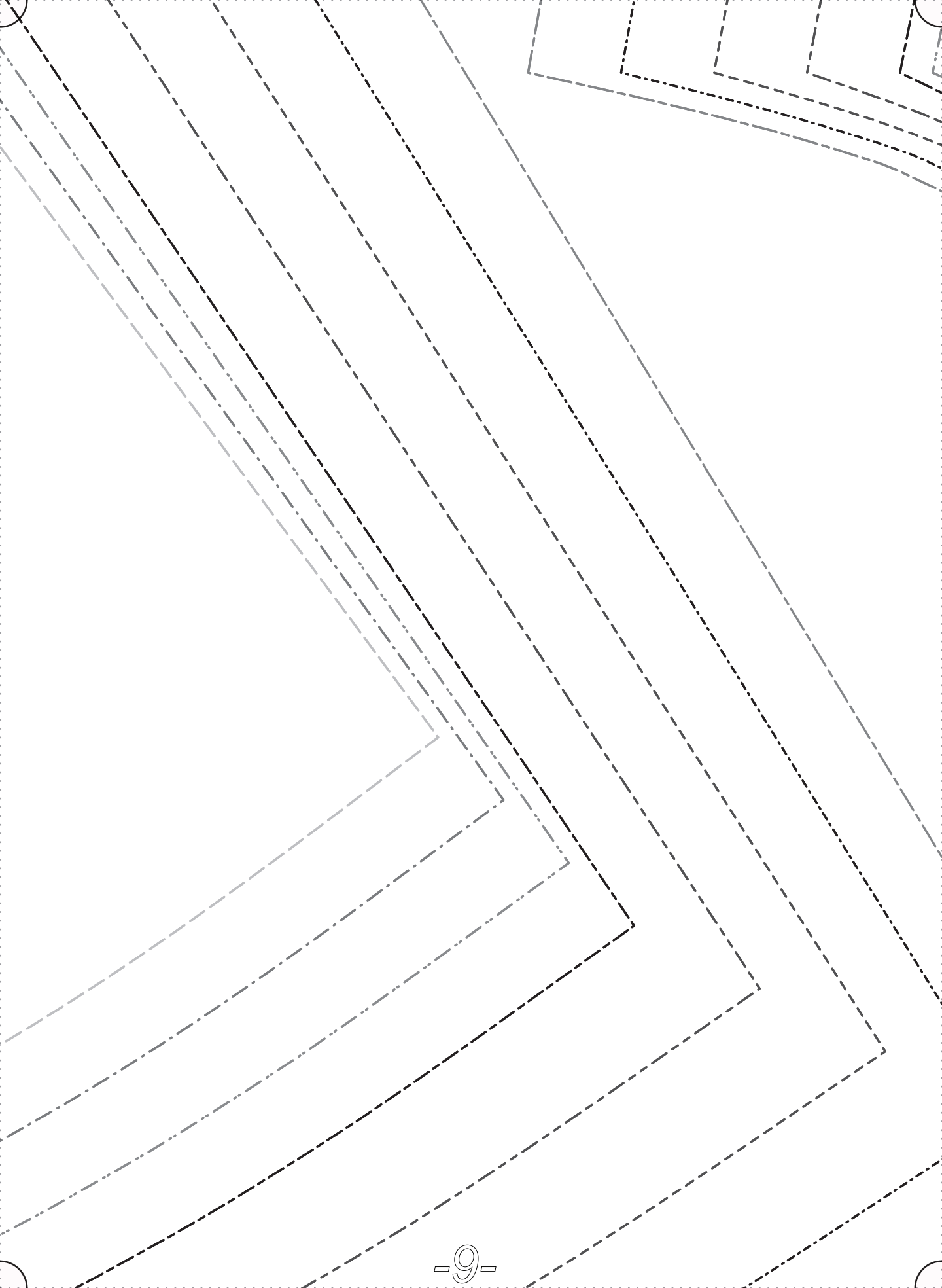
GRAINLINE



CENTER BACK ON FOLD OF FABRIC

0/2 \_\_\_\_\_  
4/6 \_\_\_\_\_  
8/10 \_\_\_\_\_  
12/14 \_\_\_\_\_  
16/18 \_\_\_\_\_  
20/22 \_\_\_\_\_  
24/26 \_\_\_\_\_  
28/30 \_\_\_\_\_

-8-



FABRICS-STORE.COM

F|S

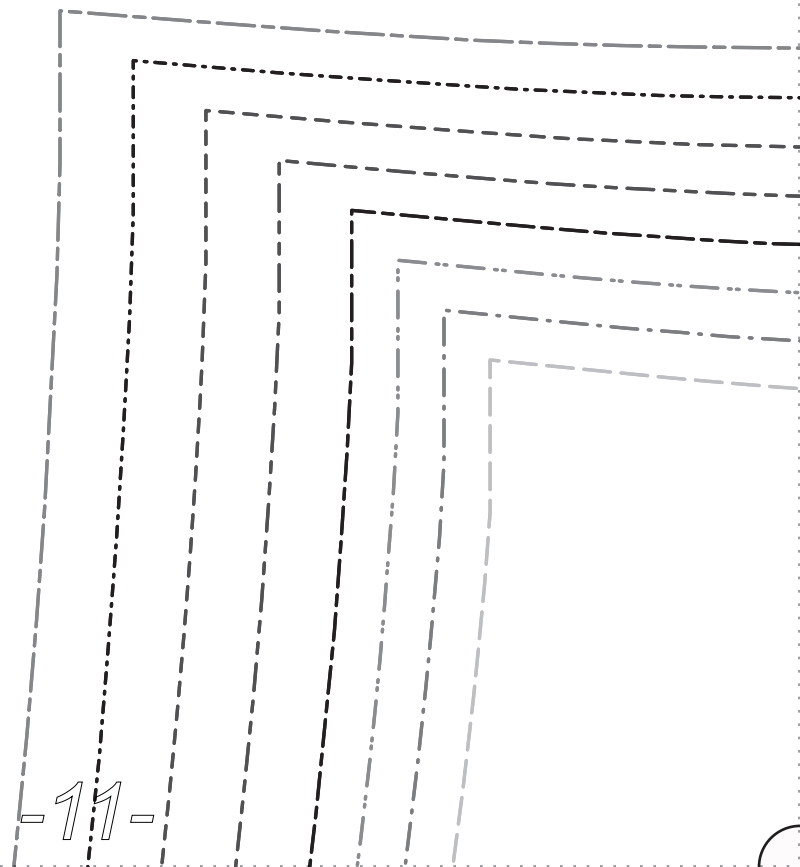
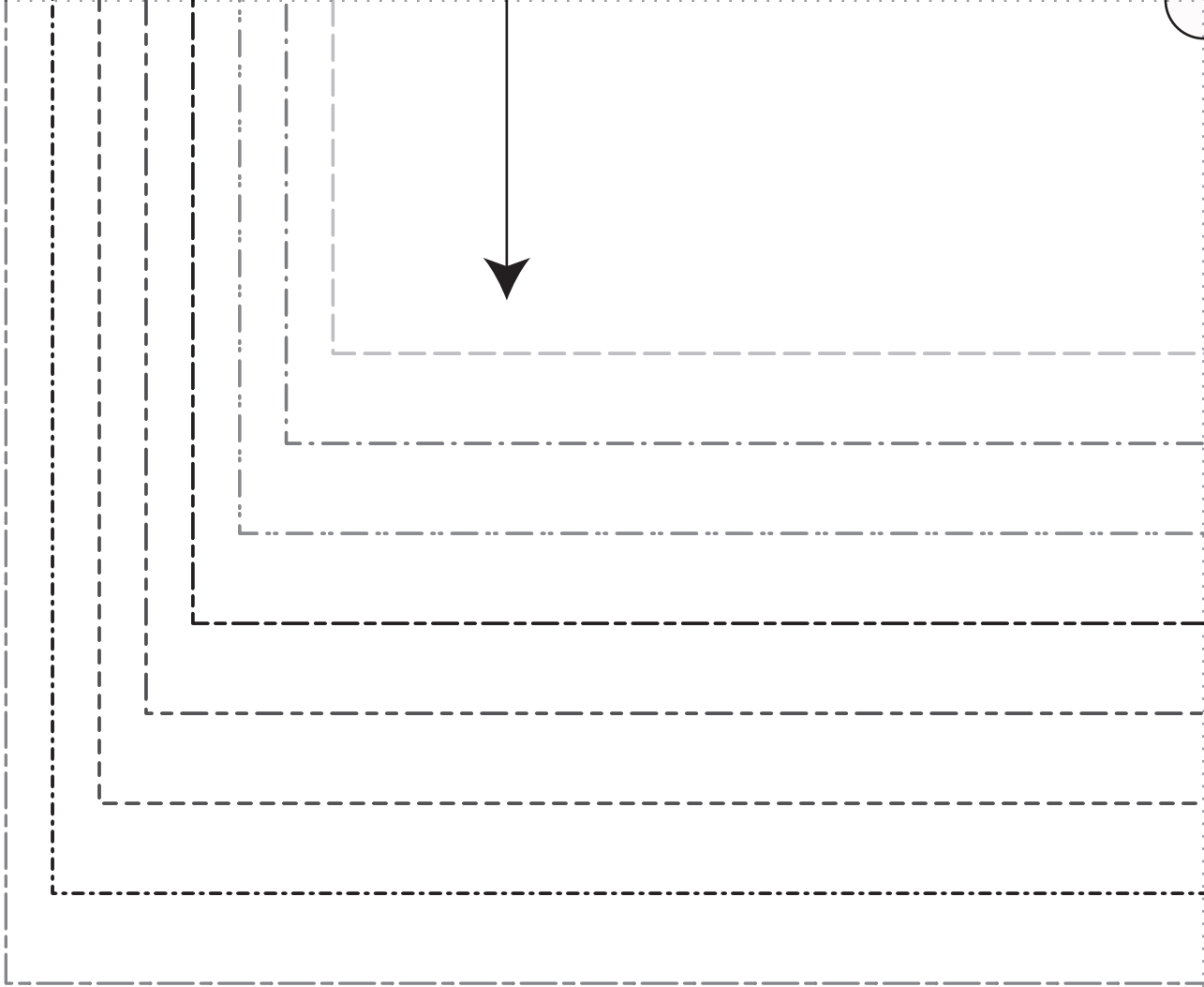
“EMILY”

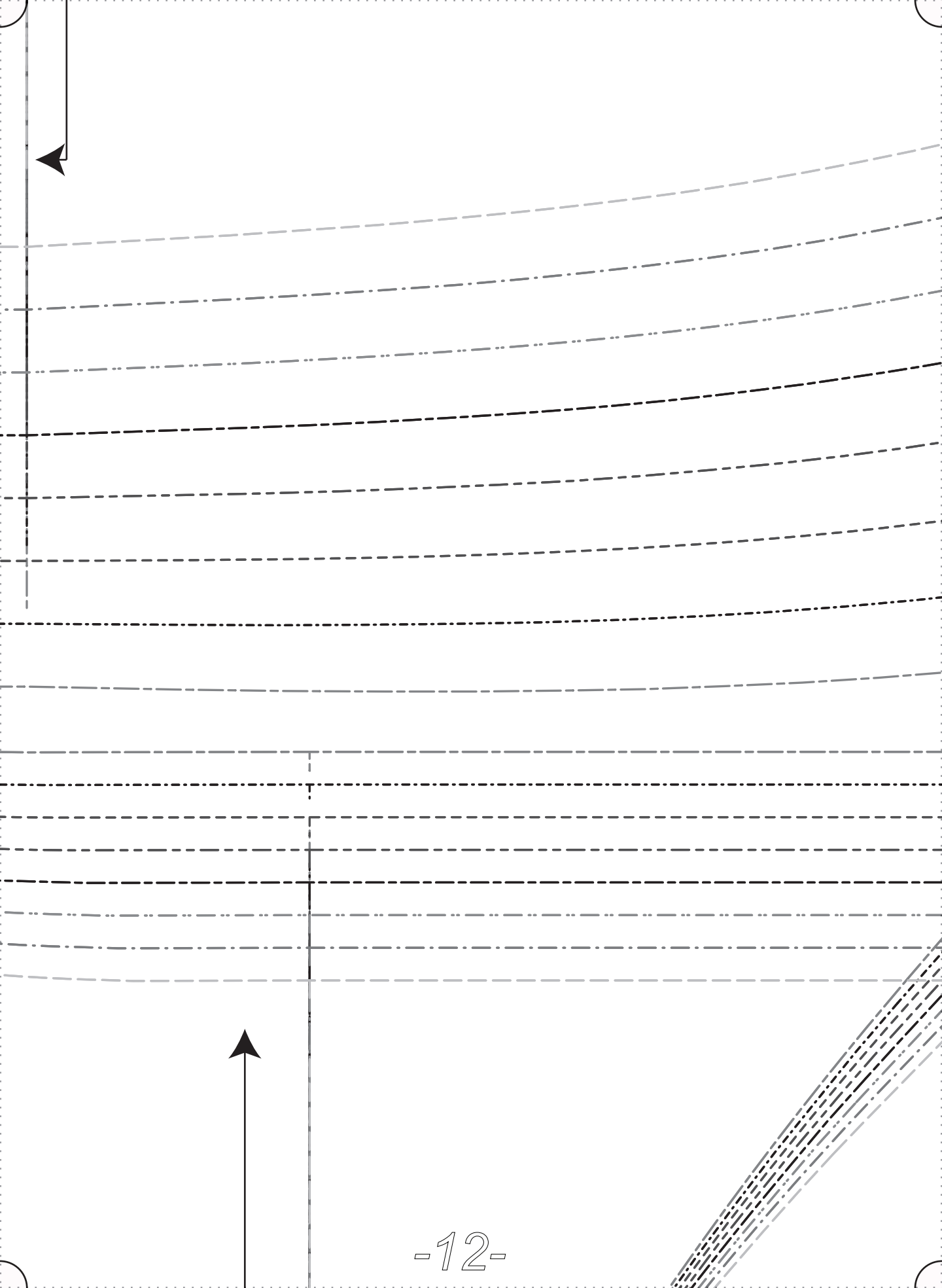


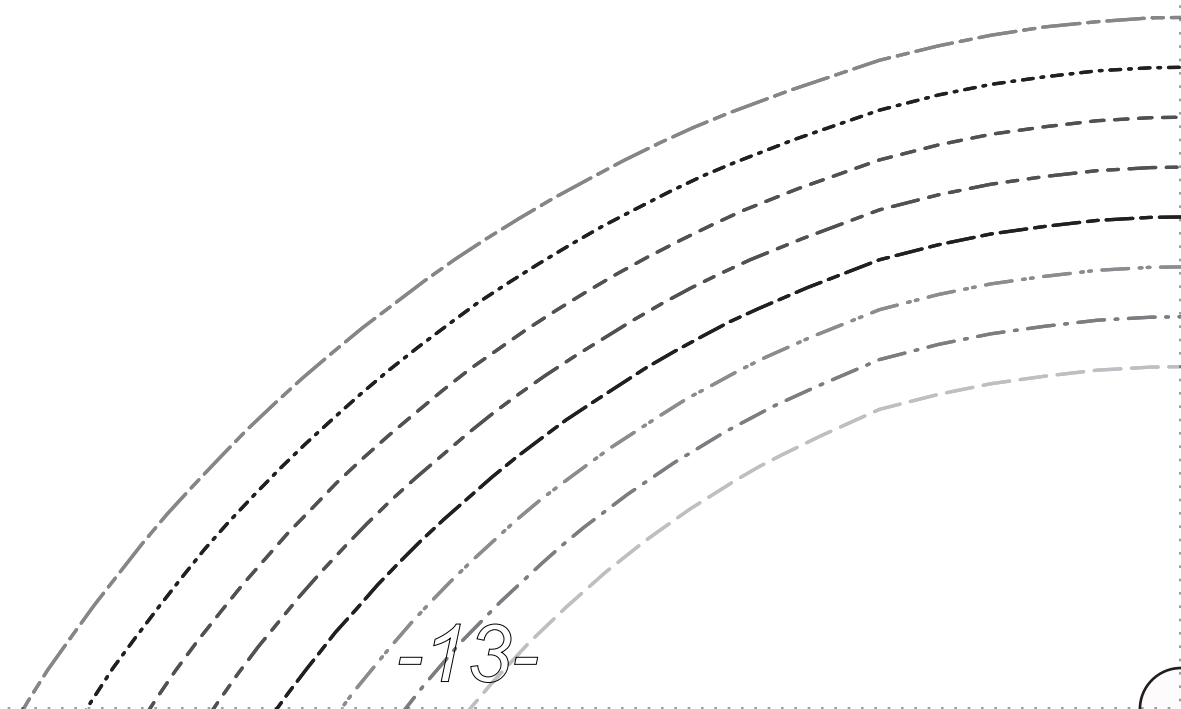
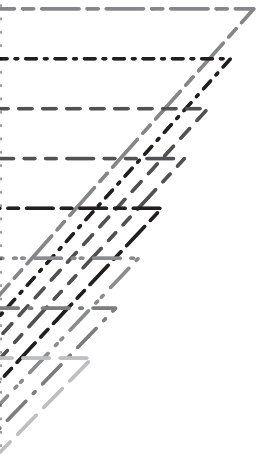
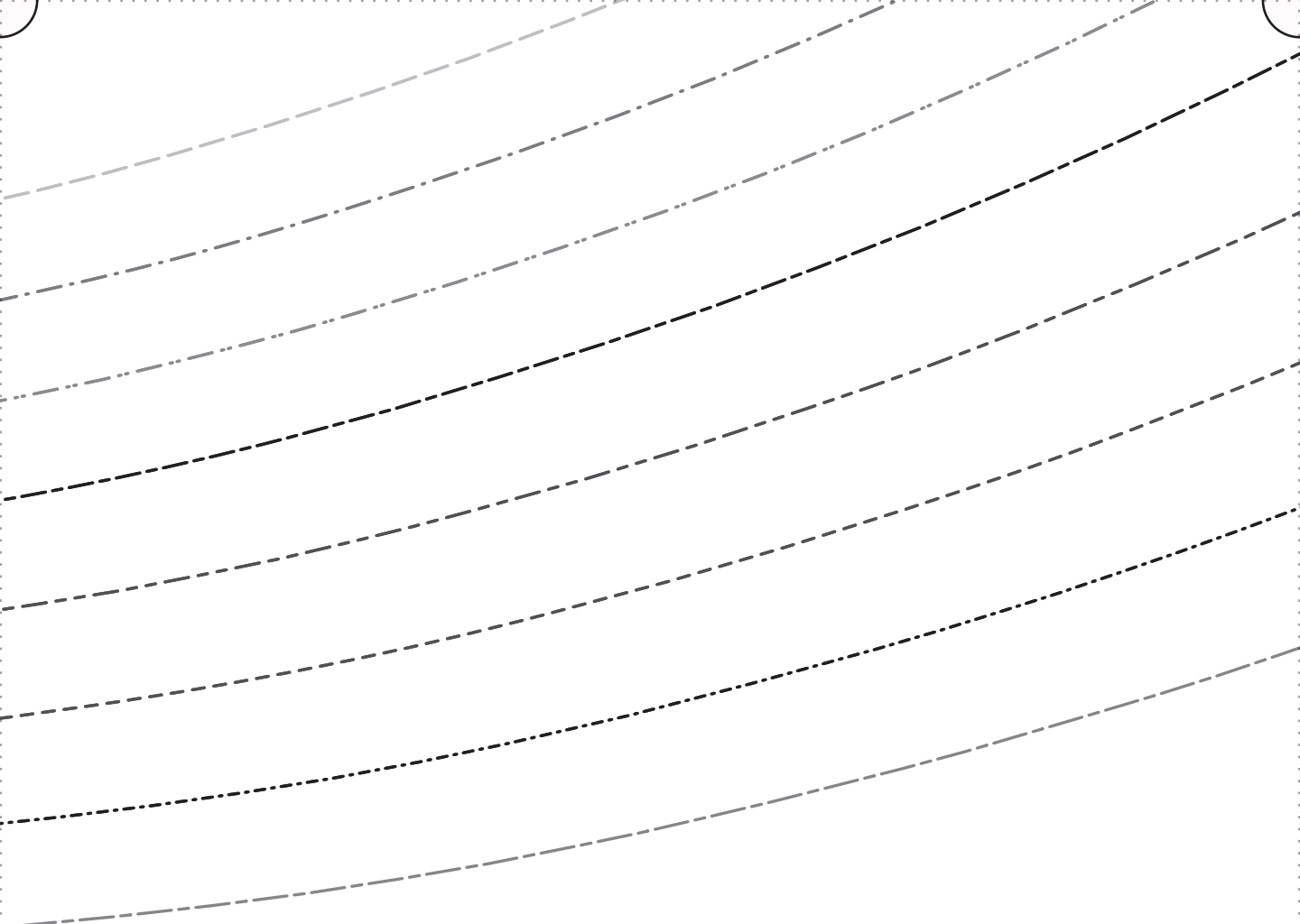
F|S

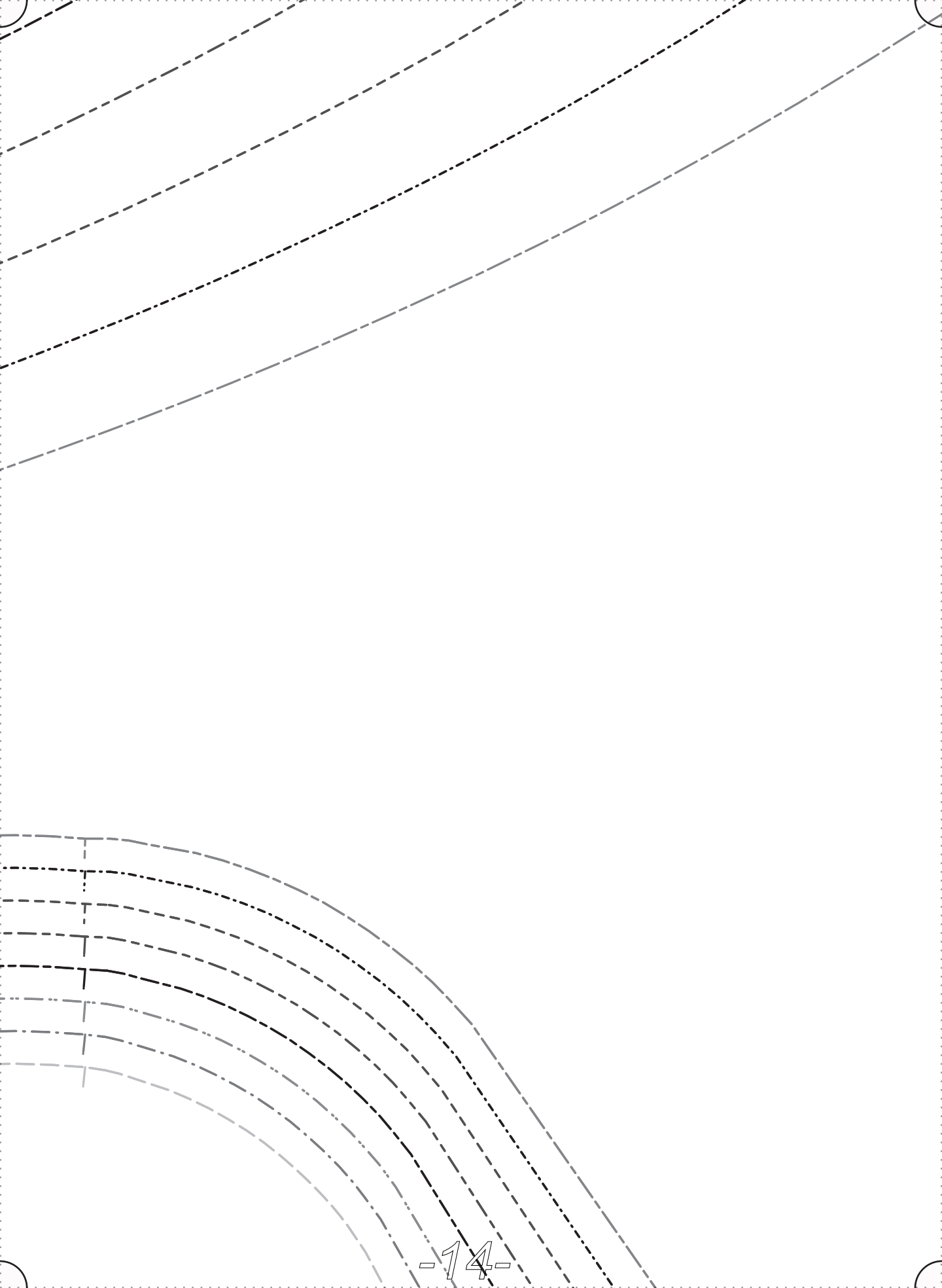
FABRICS-STORE.COM

10-





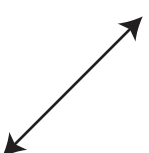


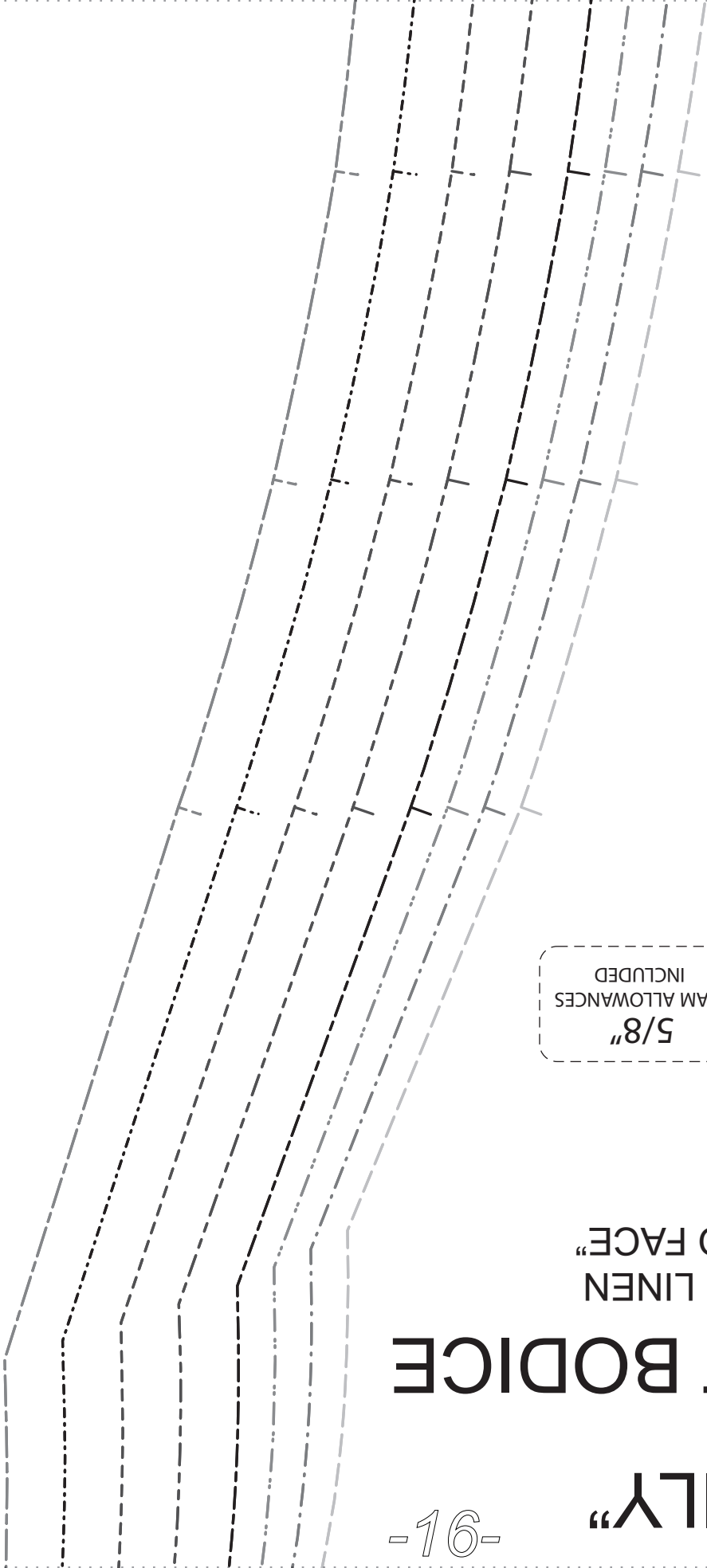




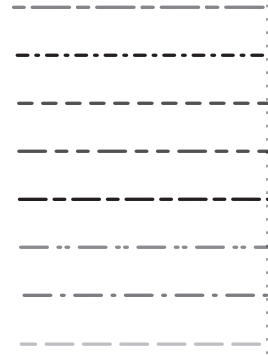
“EMILY”

G: BIAS STRIP  
CUT 2 IN LINEN





SEAM ALLOWANCES  
5/8"  
INCLUDED

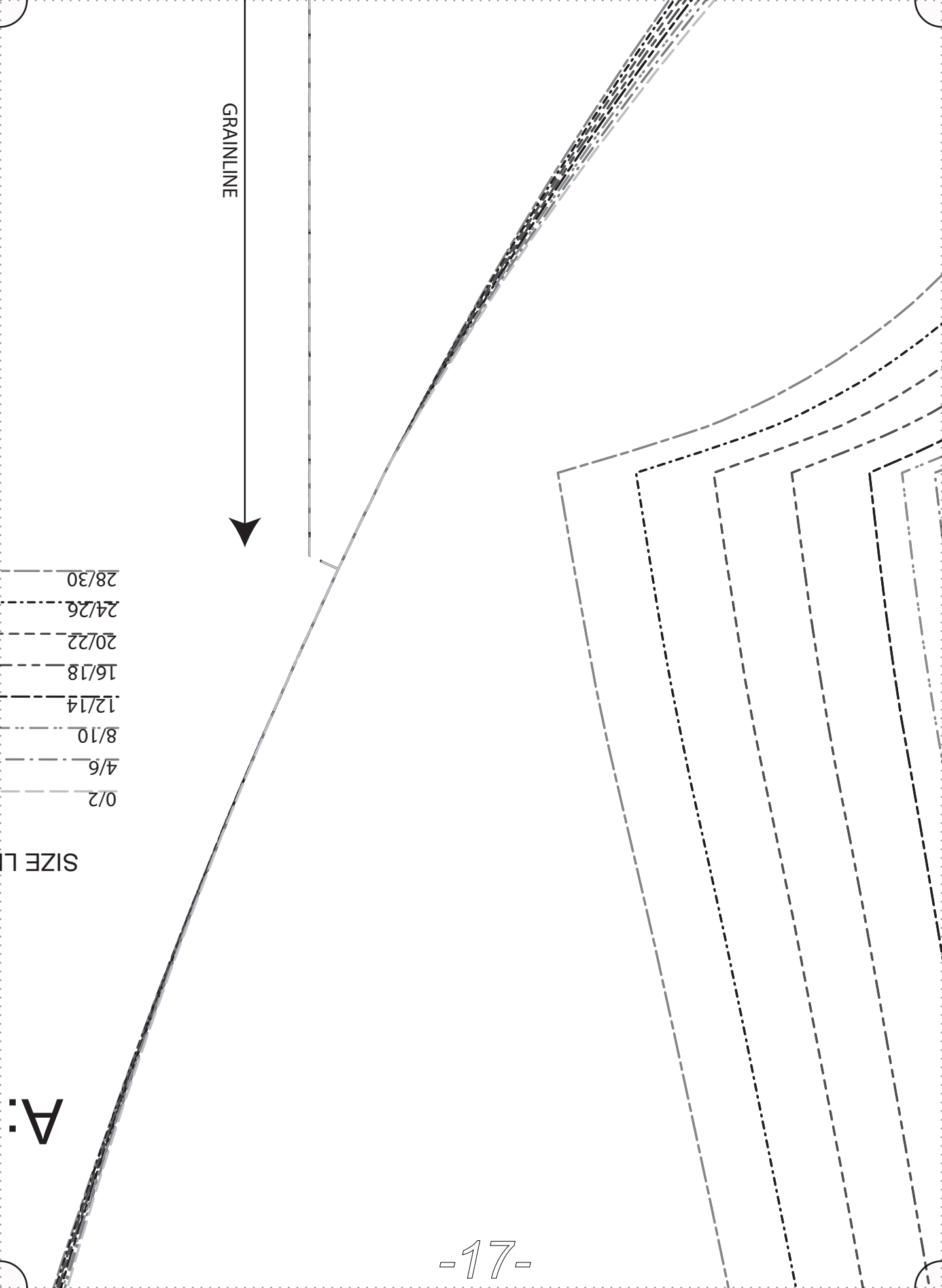


SEAM TYPES

# FRONT BODICE

CUT 2 IN LINEN  
"FACE TO FACE"

## "EMILY"



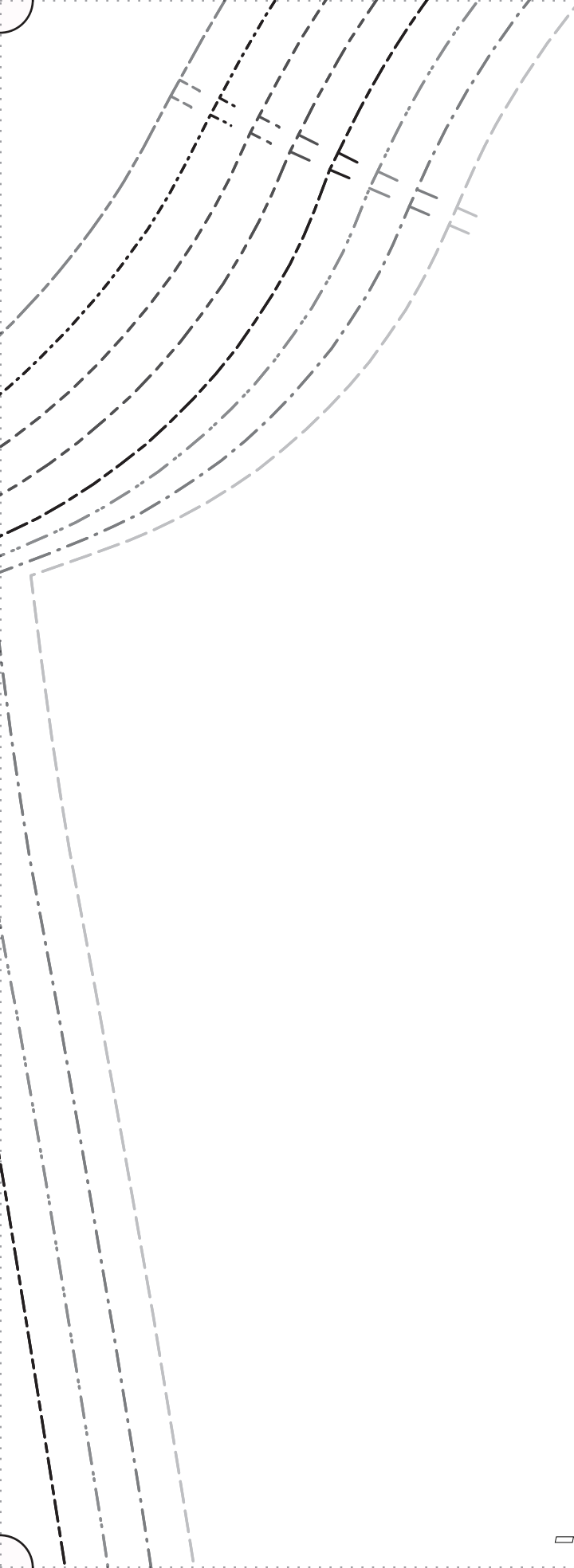
GRAINLINE



SIZE LINE

28/30  
24/26  
20/22  
16/18  
12/14  
8/10  
4/6  
0/2

A:



FABRIC

“E

D:

CU

“FA

SI

0/2

4/6

8/10

12/14

16/18

20/22

24/26

28/30

F | S

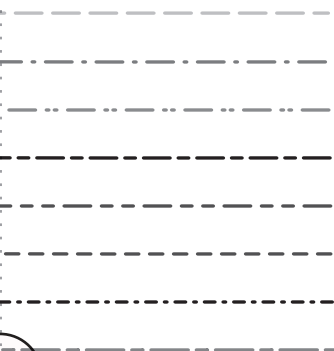
CS-STORE.COM

EMILY™

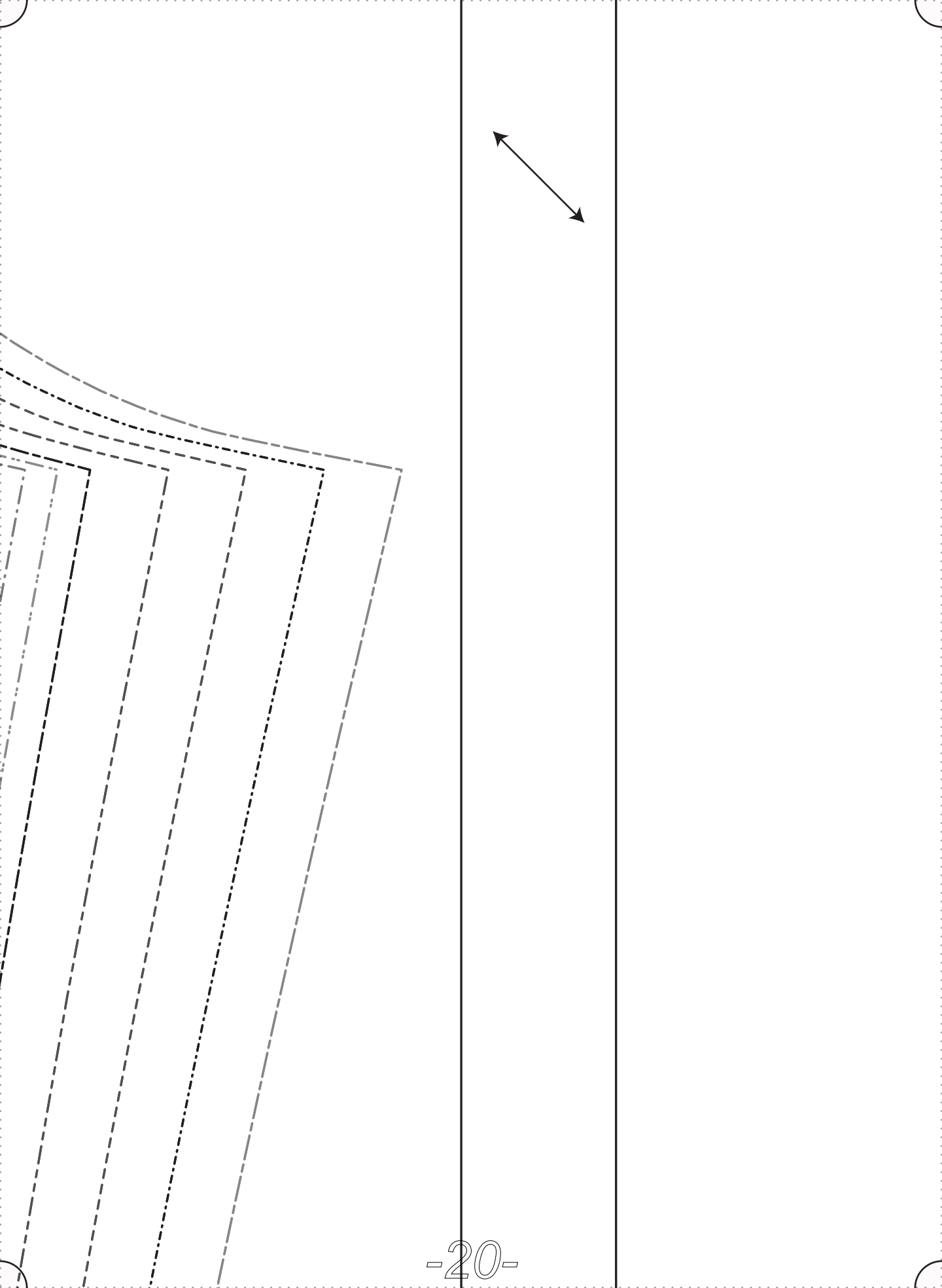
SLEEVE

OUT 2 IN LINEN  
"FACE TO FACE"

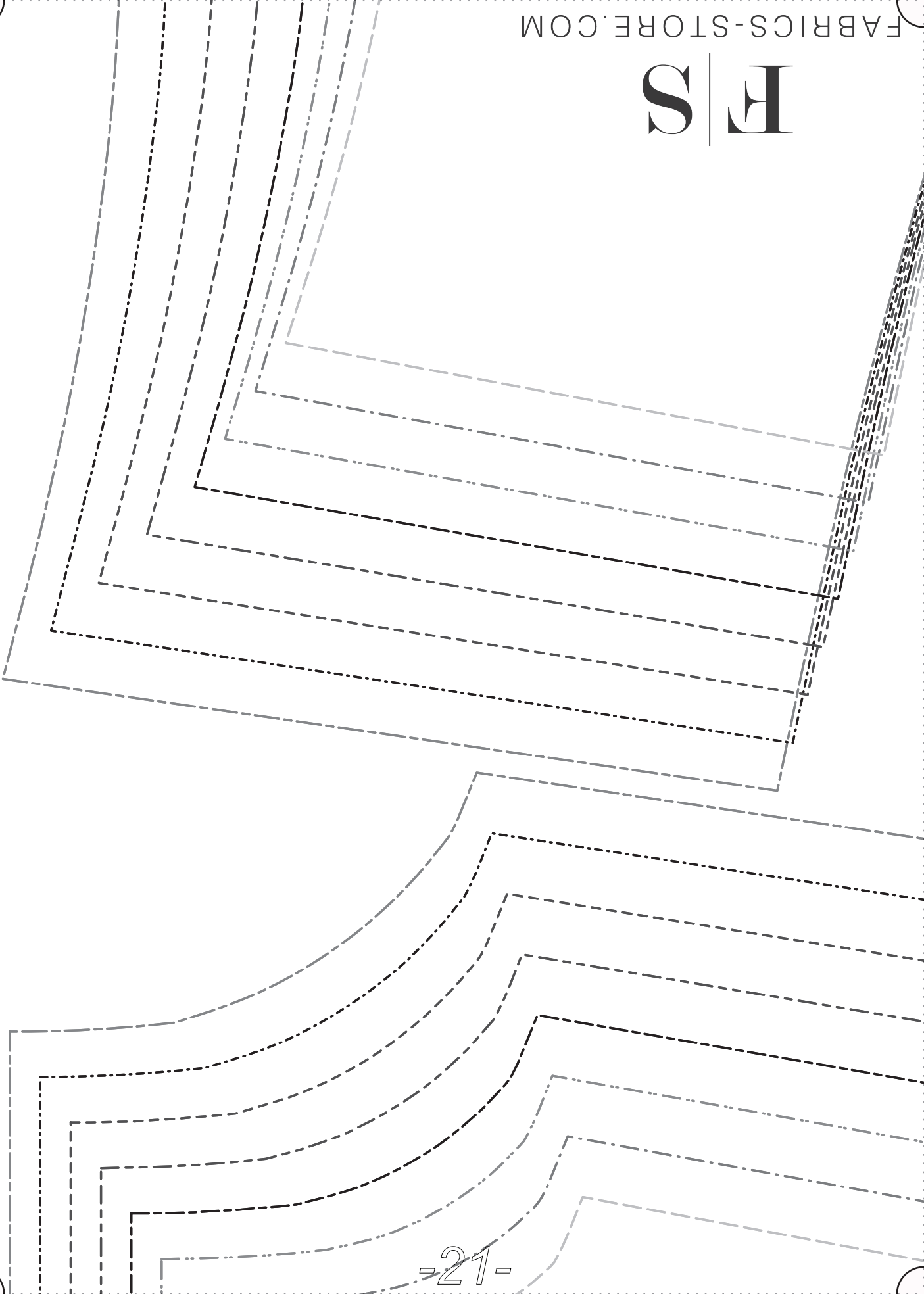
SIZE LINE TYPES



5/8"  
SEAM ALLOWANCES  
INCLUDED

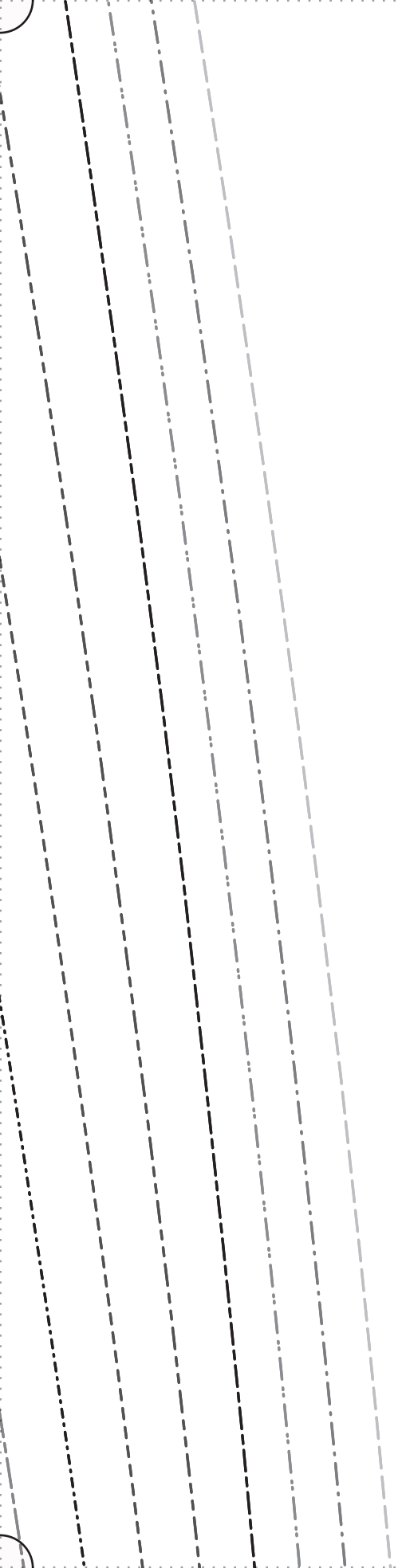


F|S





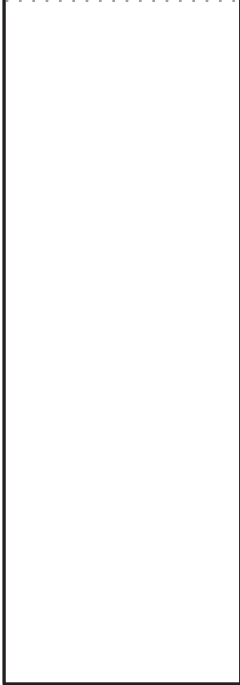




GRAINLINE









F | S

FABRICS-STORE.COM

“EMILY”

C: BACK

CUT 1 IN LINEN  
CENTER BACK “ON FOLD”

SIZE LINE TYPES

0/2 \_\_\_\_\_

4/6 \_\_\_\_\_

8/10 \_\_\_\_\_

12/14 \_\_\_\_\_

16/18 \_\_\_\_\_

20/22 \_\_\_\_\_

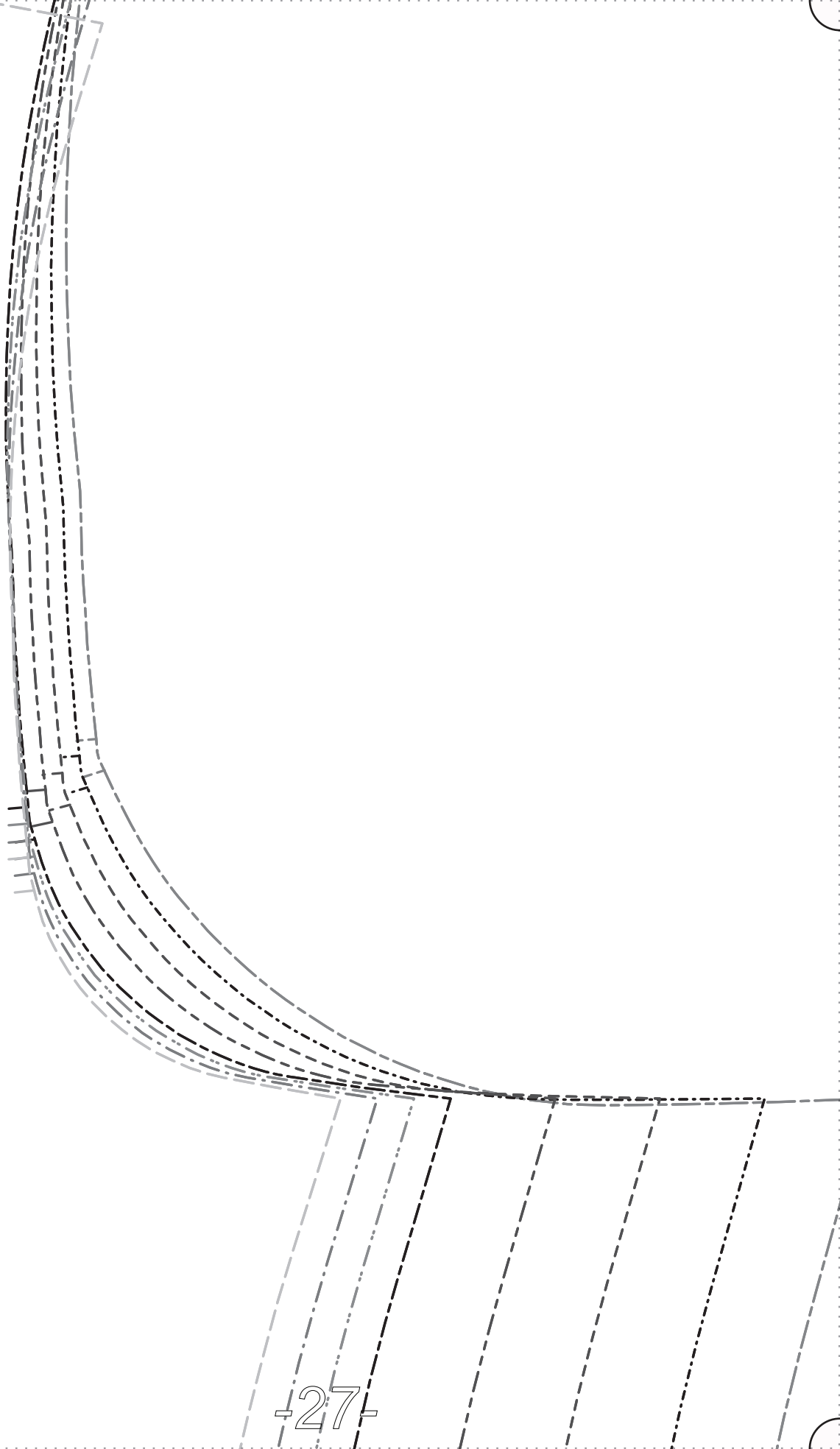
24/26 \_\_\_\_\_

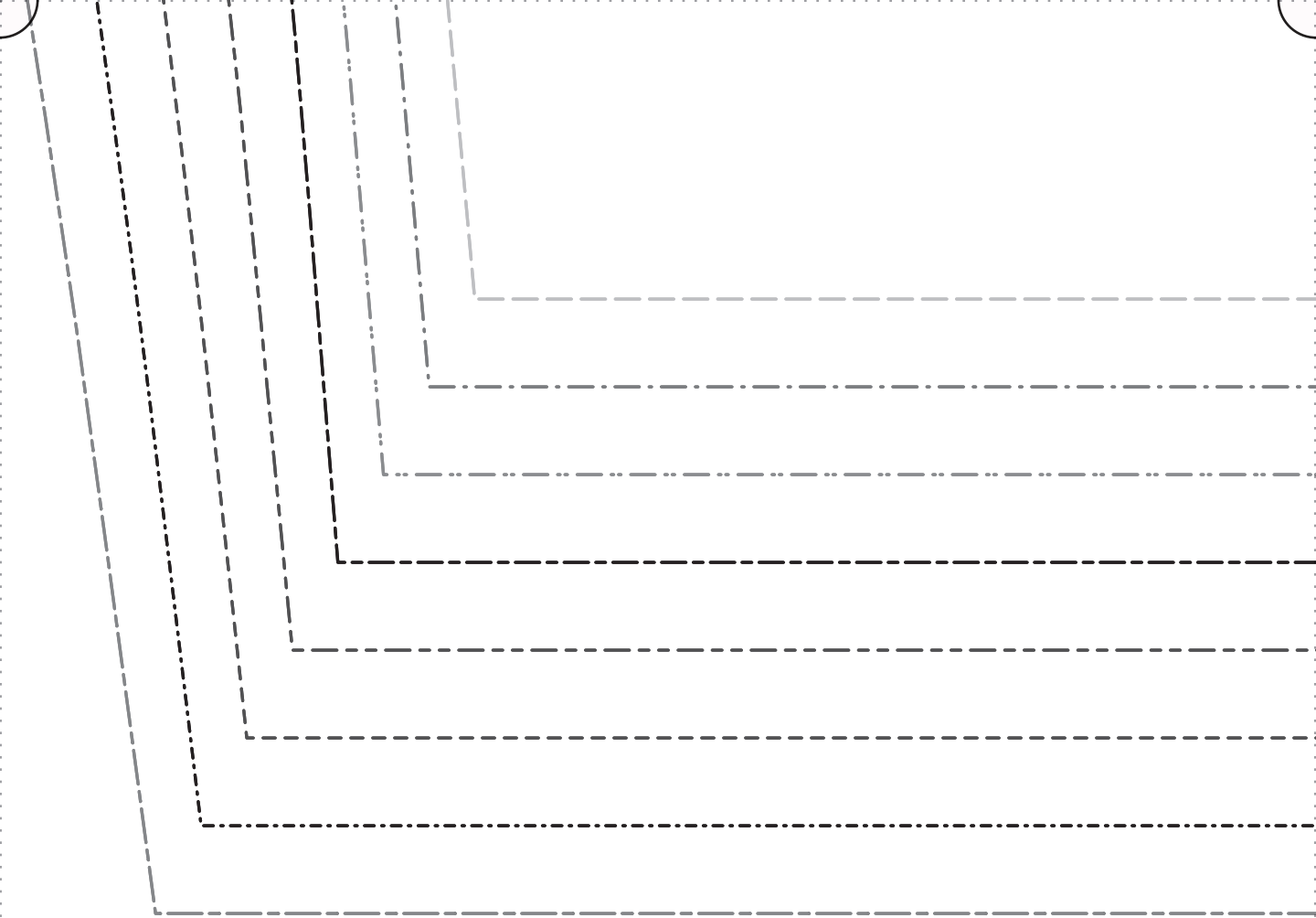
28/30 \_\_\_\_\_

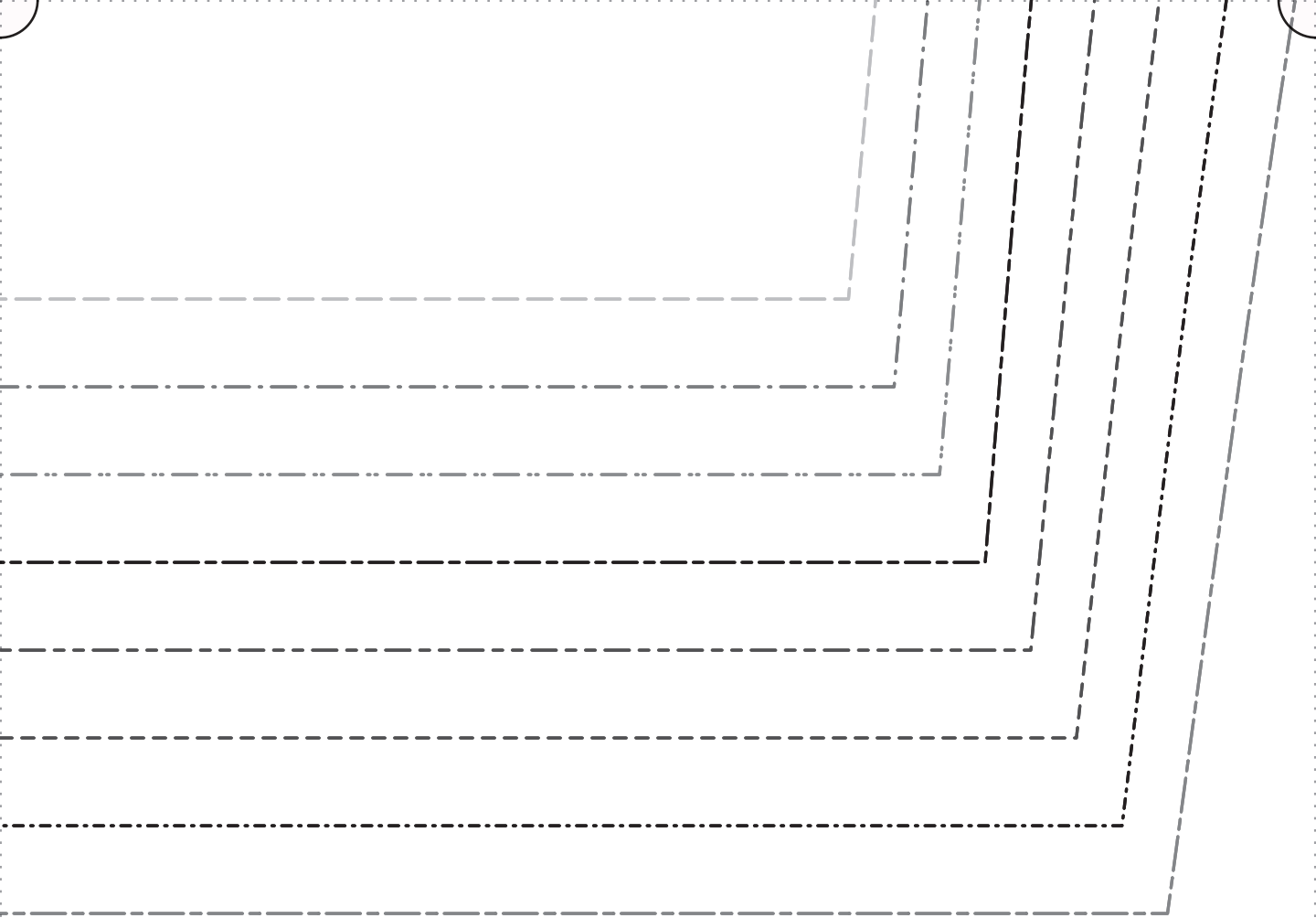
CENTER BACK ON FOLD OF FABRIC

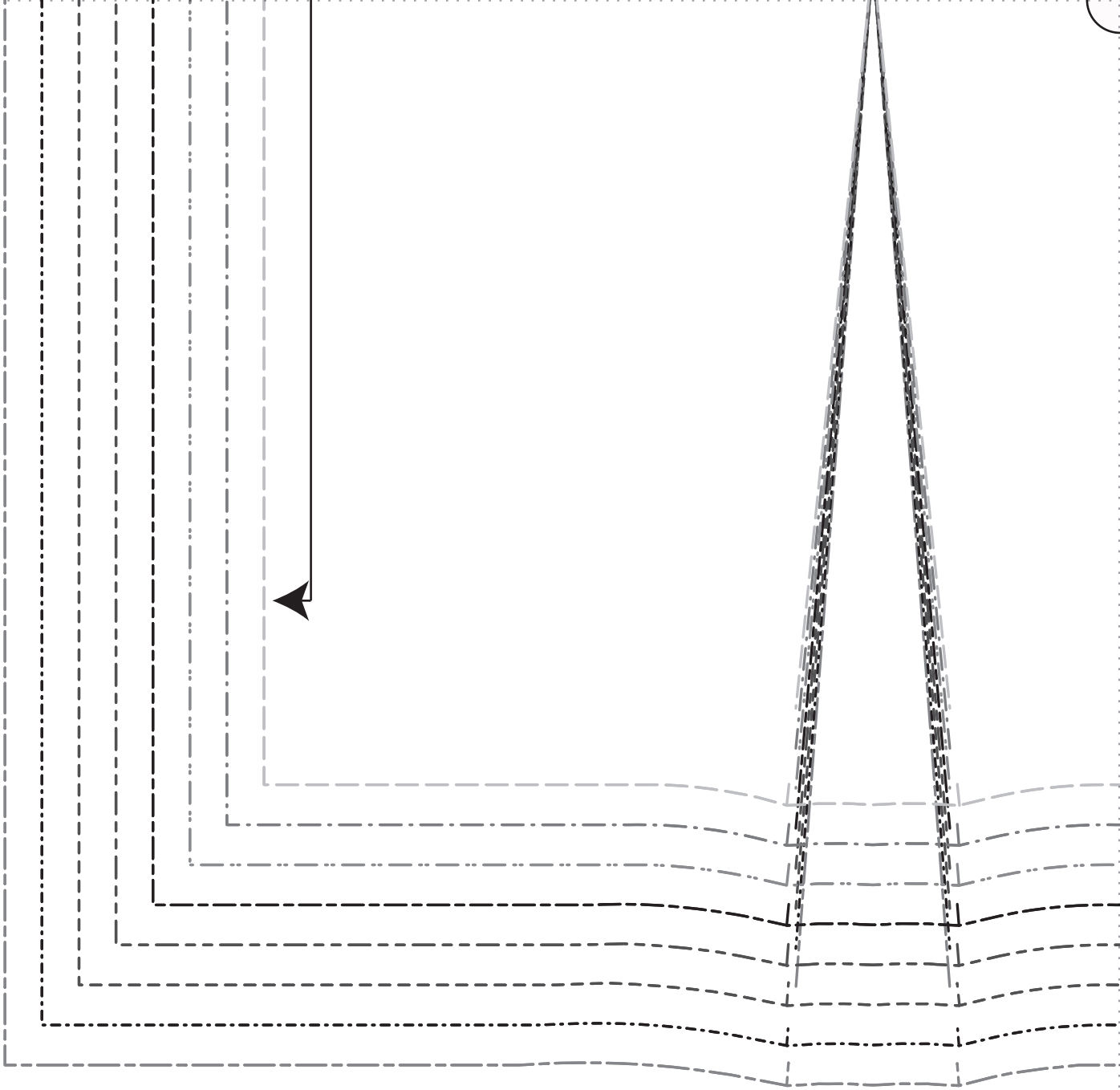
5/8"

SEAM ALLOWANCES  
INCLUDED

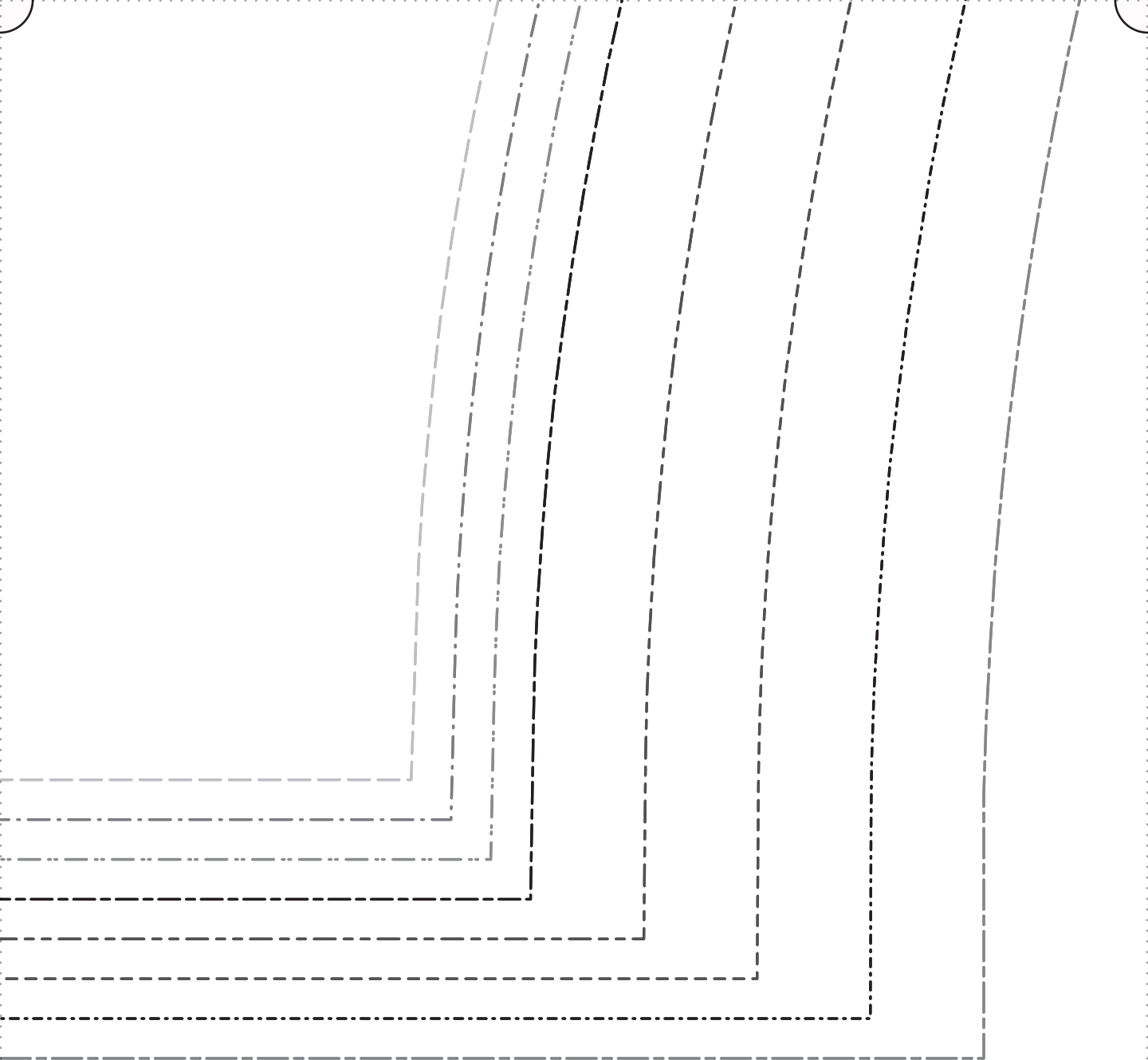












---

---

# *Thank you*

---

*We work hard on making our patterns beautiful enough to meet your standards.*

*If you feel like sharing praise or helpful criticism, please send us your comments to [ask@fabrics-store.com](mailto:ask@fabrics-store.com)*