

Pattern for our "Diana Button-Down Pleated Dress"

For instructions visit: blog.fabrics-store.com and enter "Diana Pattern" in the search box.

2" Square
Scale Test

IMPORTANT! PRINT AT ACTUAL SIZE, 100%, OR
NO SCALING

PRINT ONLY THIS PAGE FIRST TO CHECK SCALE

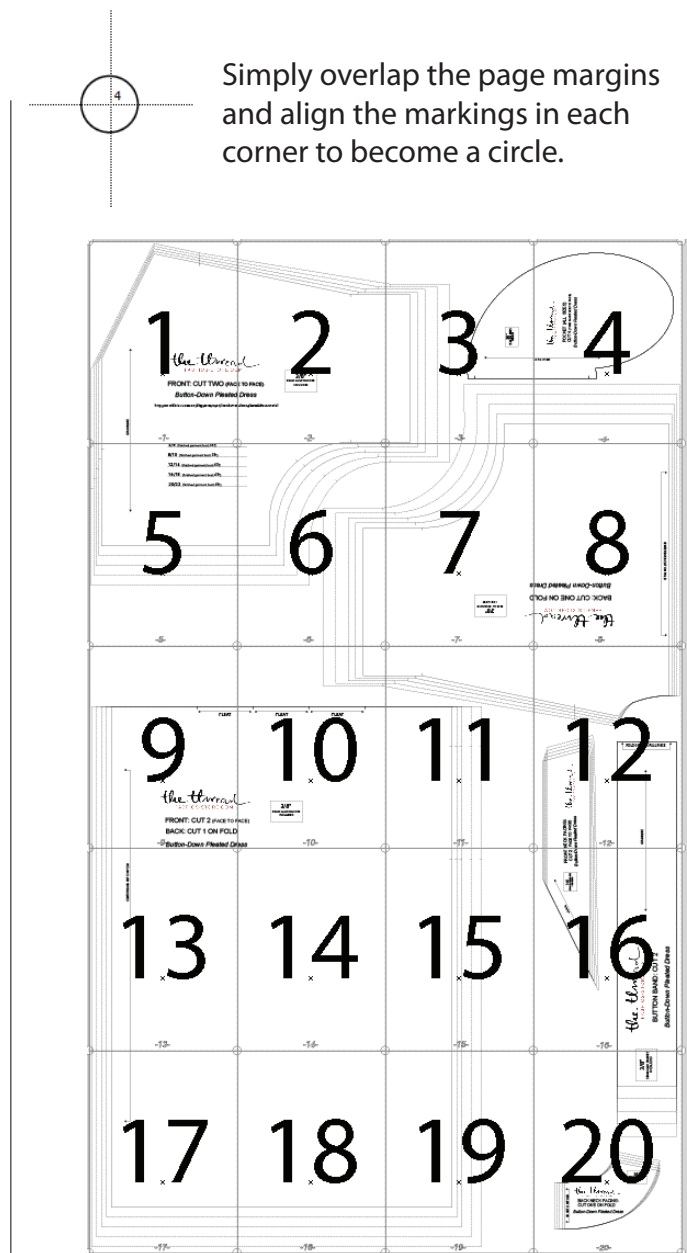
Please choose size based on desired
finished garment bust measurement.

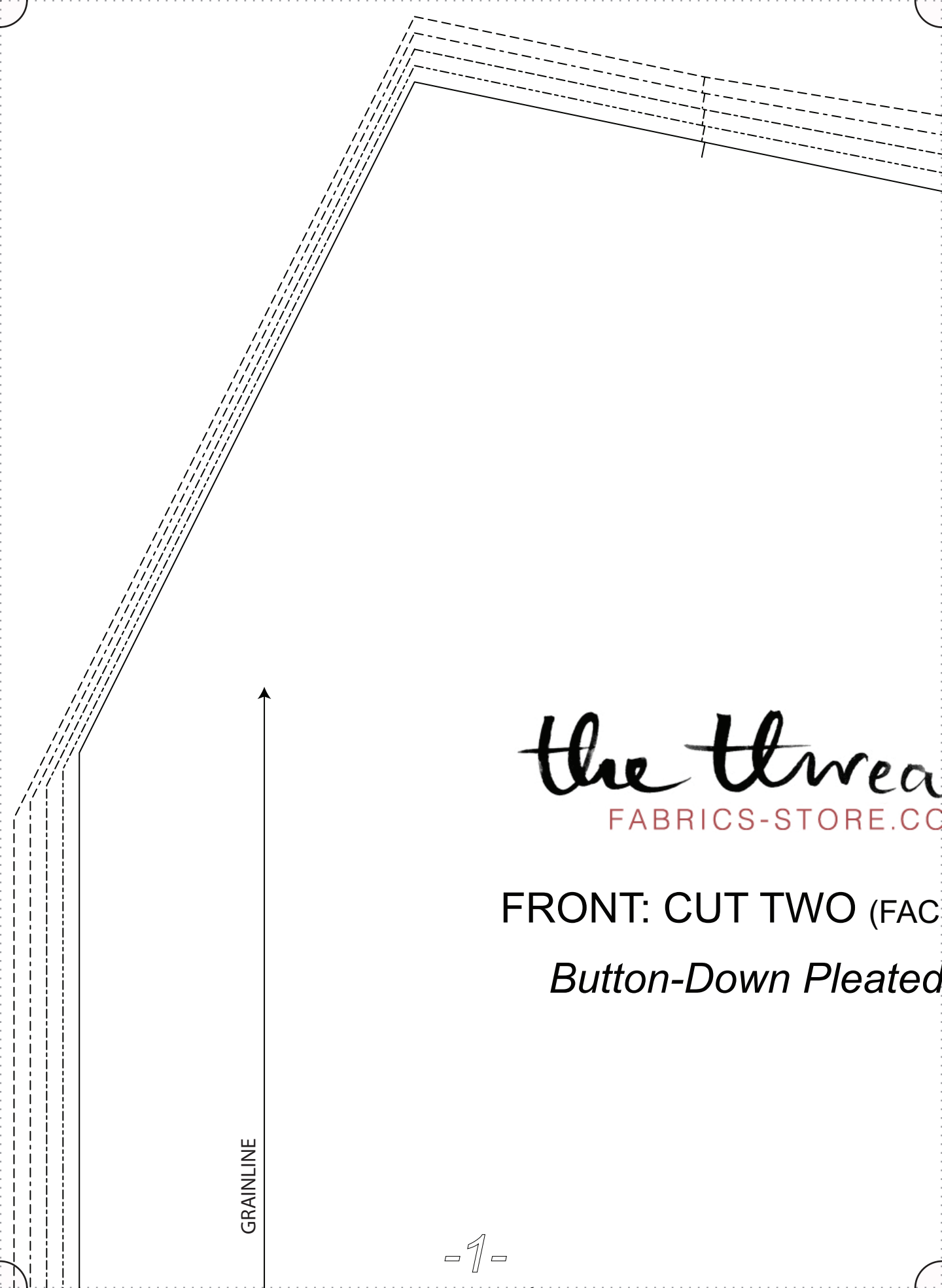
- 4/6 (finished garment bust: 36")
- 8/10 (finished garment bust: 38")
- 12/14 (finished garment bust: 40")
- 16/18 (finished garment bust: 43")
- 20/22 (finished garment bust: 46")

Layered PDF

This pattern has embedded
layers so you can print all
sizes or a single size. See
your .pdf viewers 'Layers'
menu.

Simply overlap the page margins
and align the markings in each
corner to become a circle.





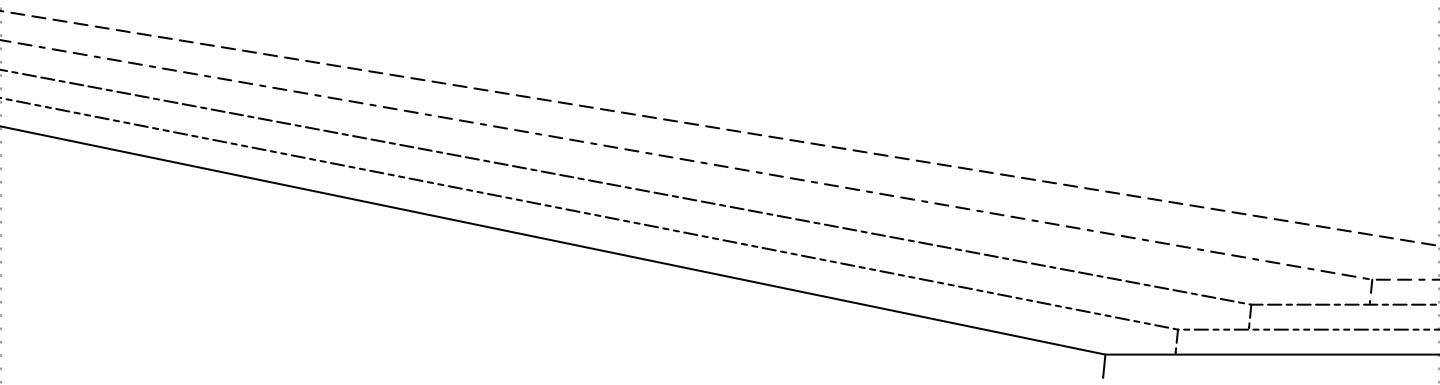
the thread

FABRICS-STORE.CO

FRONT: CUT TWO (FAC

Button-Down Pleated

GRAINLINE

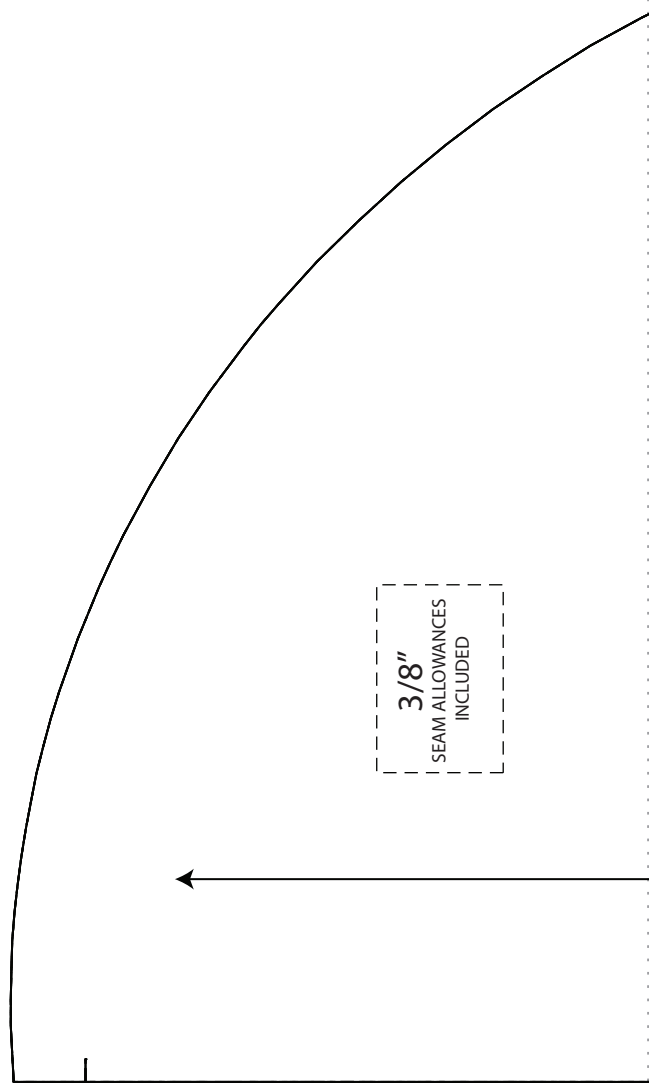
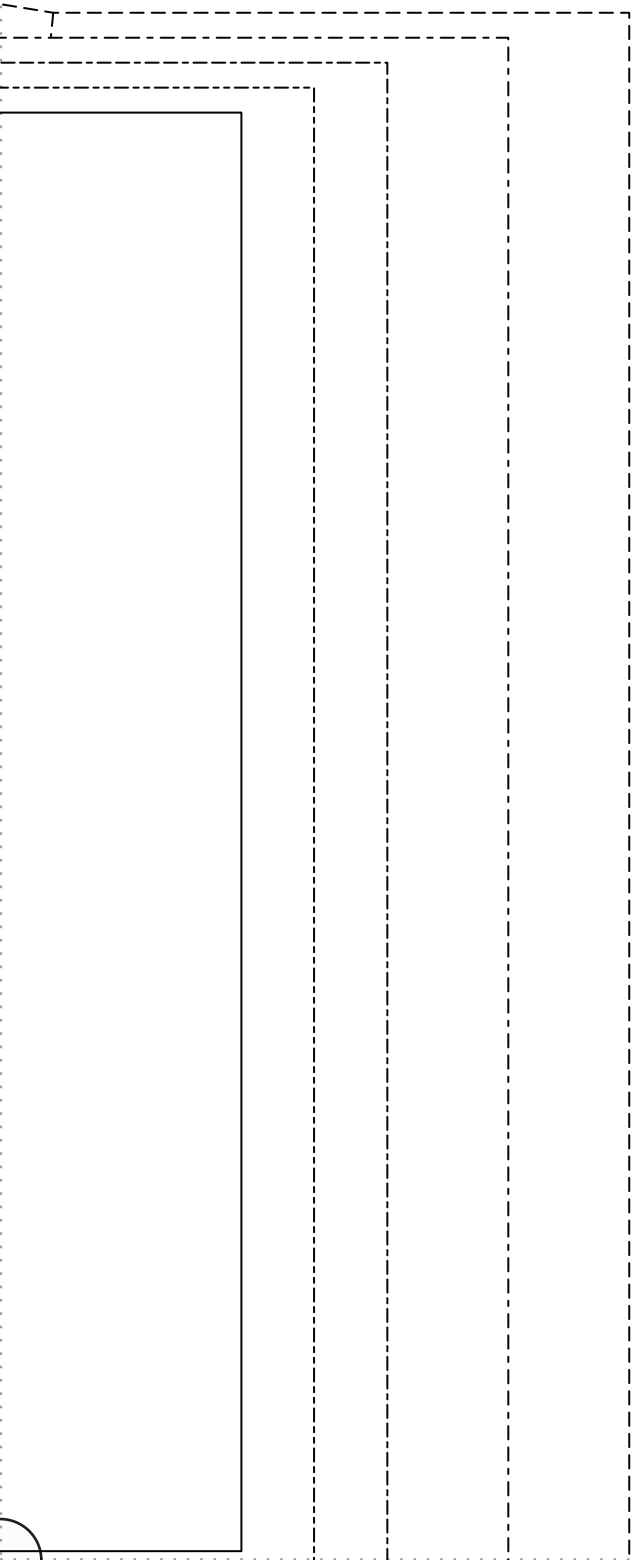


al
M

(E TO FACE)

Dress

3/8"
SEAM ALLOWANCES
INCLUDED

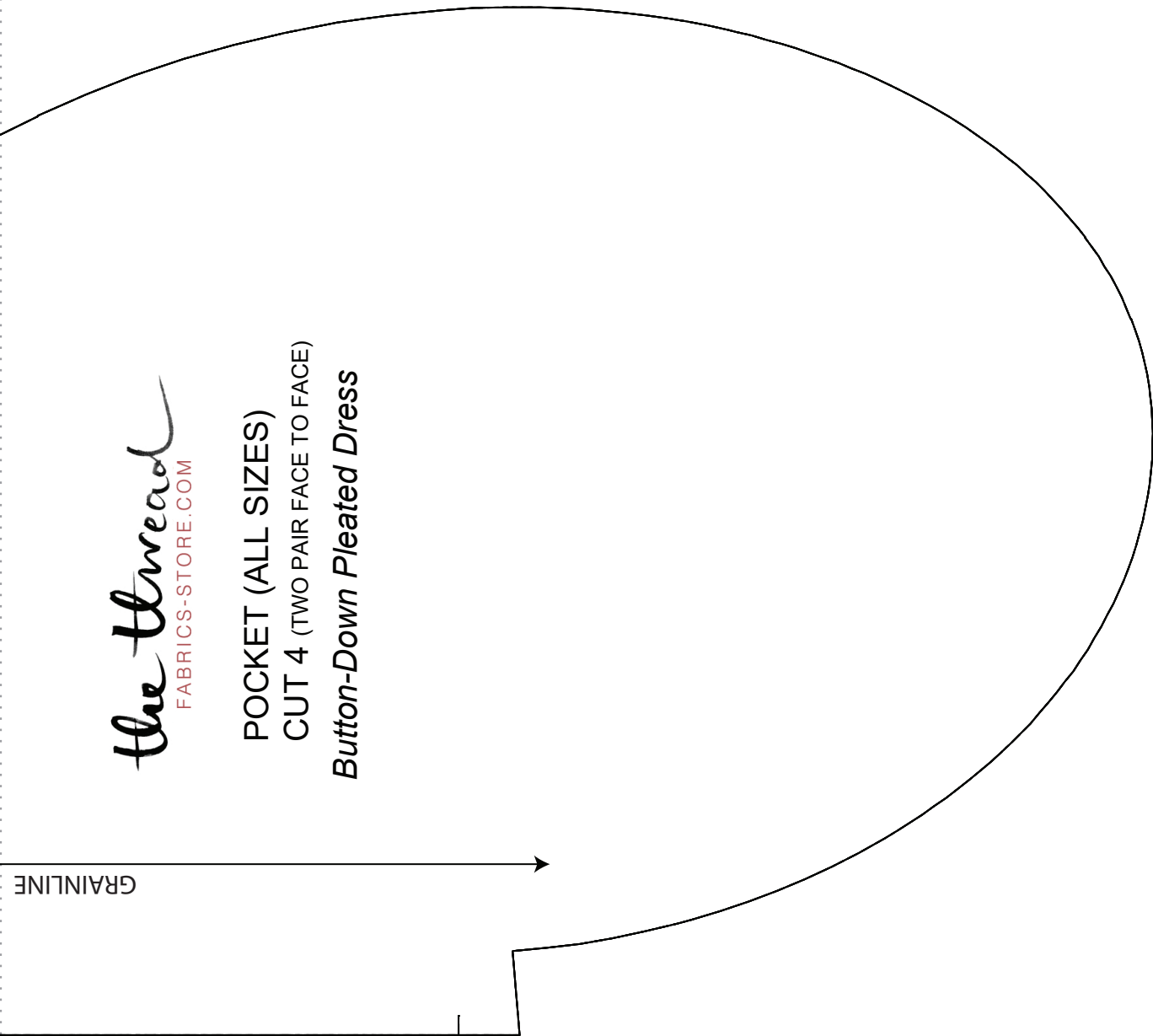


3/8"
SEAM ALLOWANCES
INCLUDED

the thread
FABRICS-STORE.COM

POCKET (ALL SIZES)
CUT 4 (TWO PAIR FACE TO FACE)
Button-Down Pleated Dress

GRAINLINE



4/6 (finished garment bust: 36")

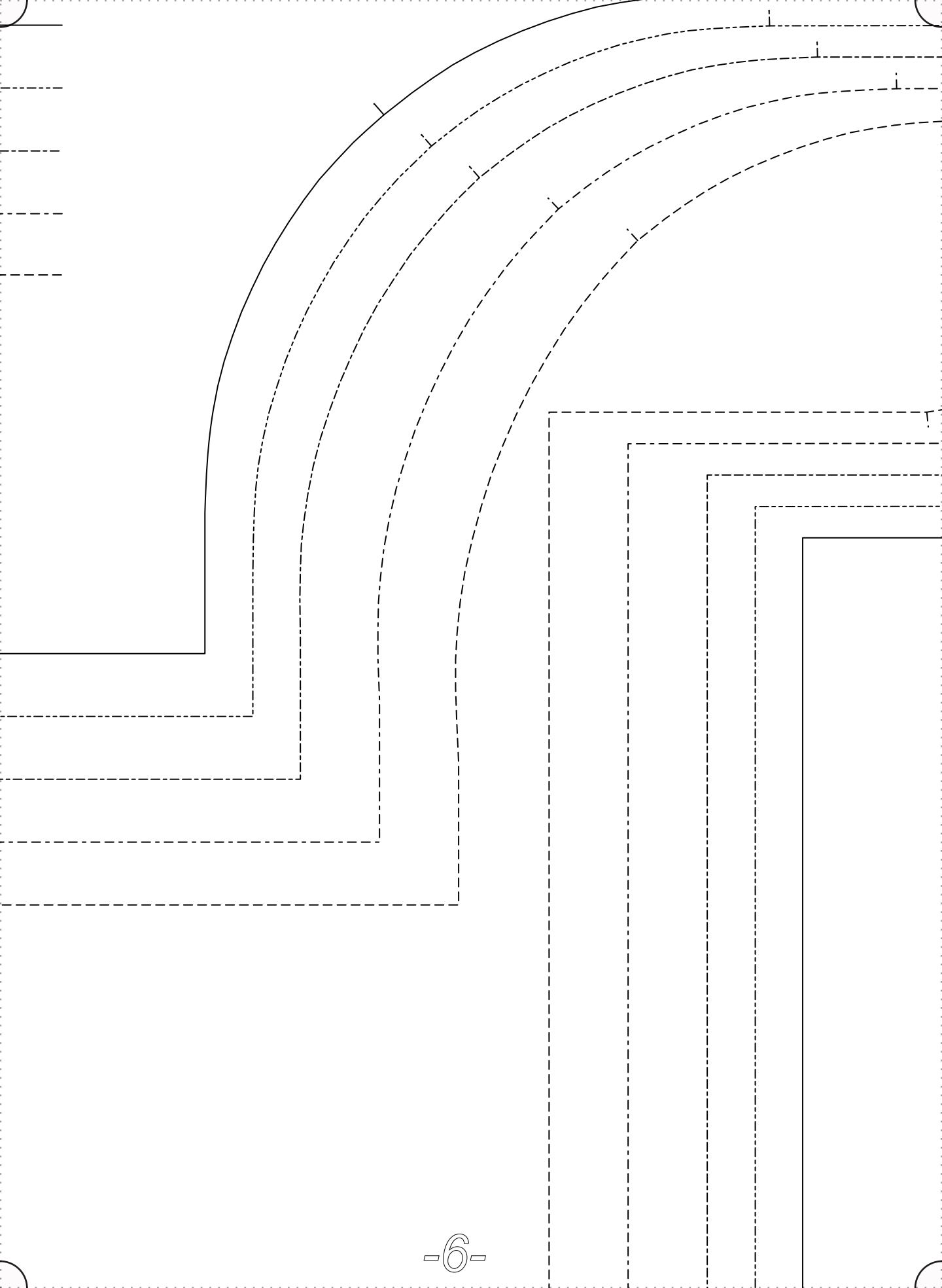
8/10 (finished garment bust: 38")

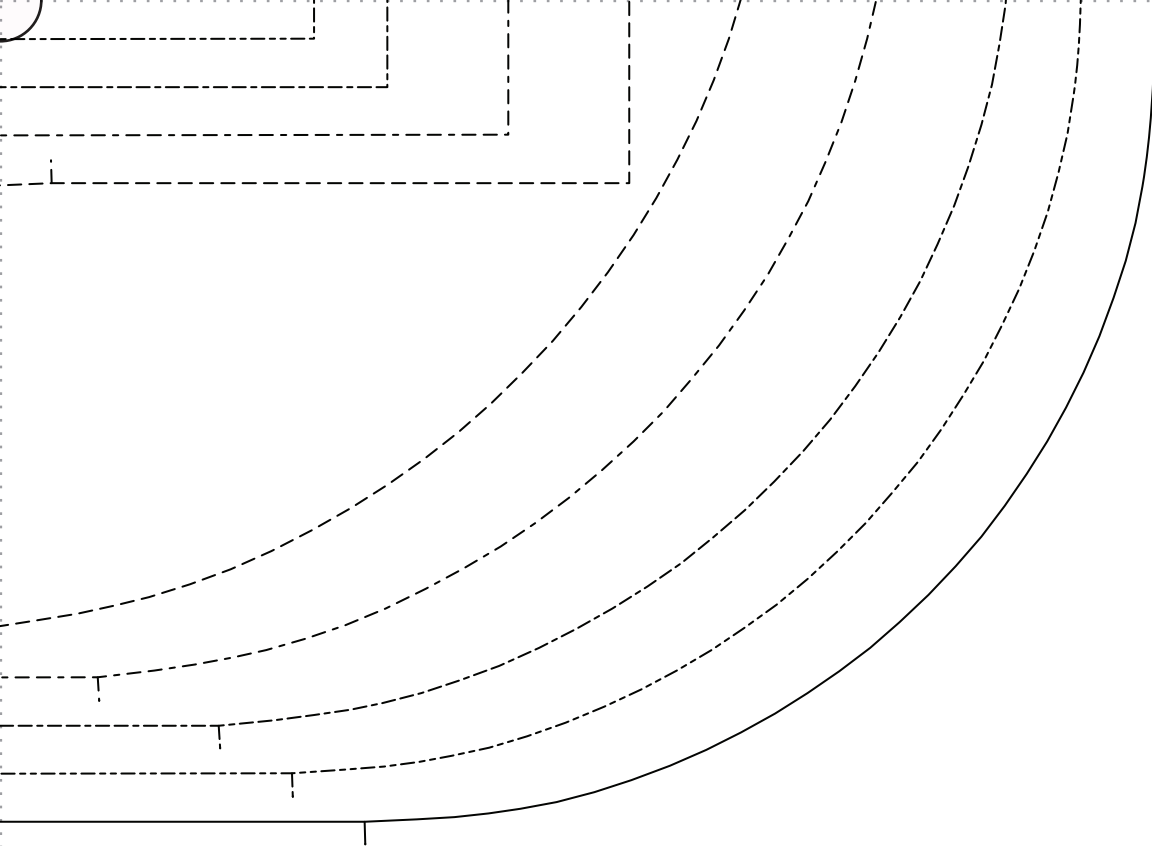
12/14 (finished garment bust: 40")

16/18 (finished garment bust: 43")

20/22 (finished garment bust: 46")







SEAM ALLOWANCES
3/8"
INCLUDED

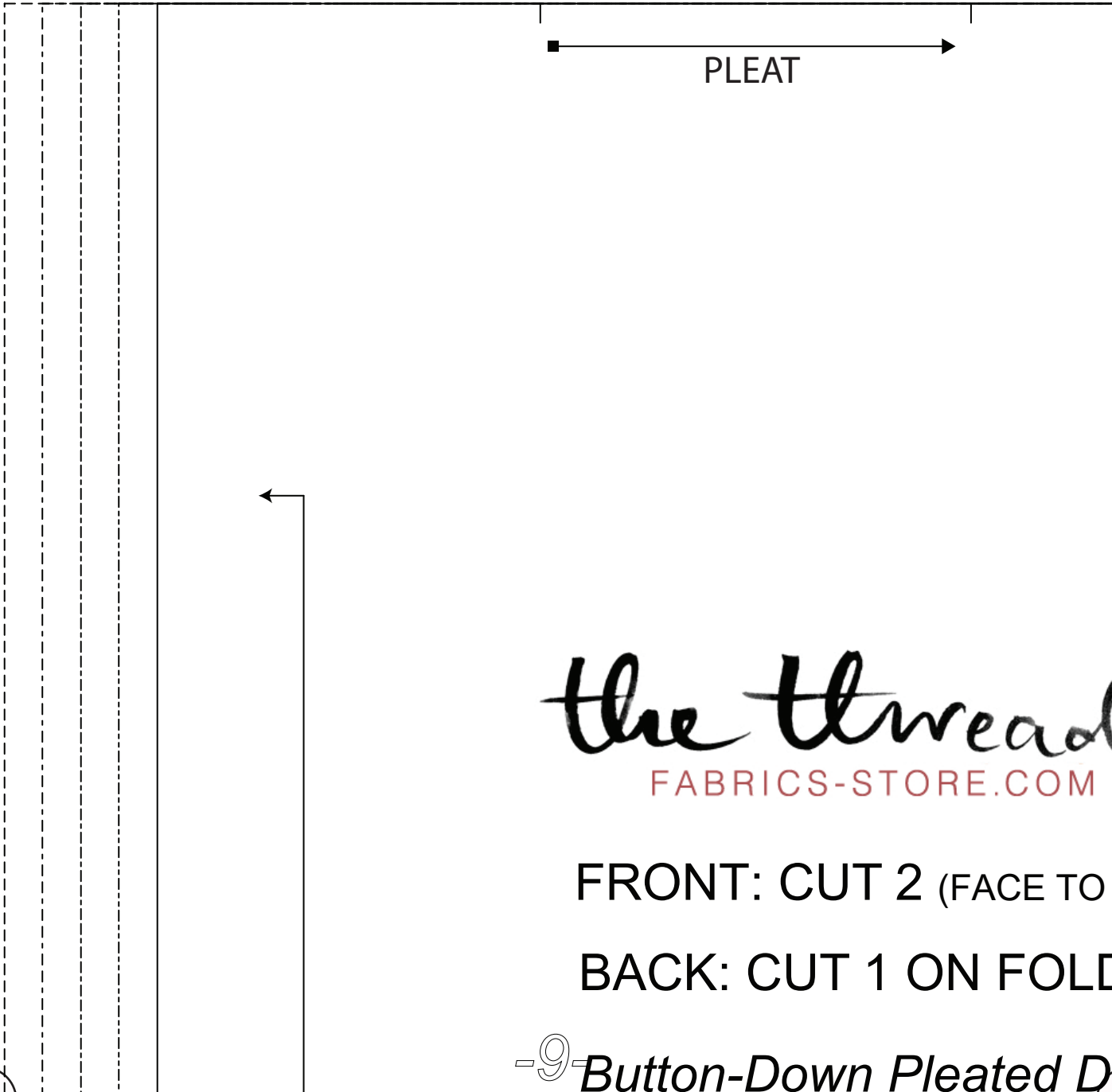
CENTER BACK CUT ON FOLD

Button-Down Pleated Dress

BACK: CUT ONE ON FOLD

FABRICS-STORE.COM

The Thread



PLEAT

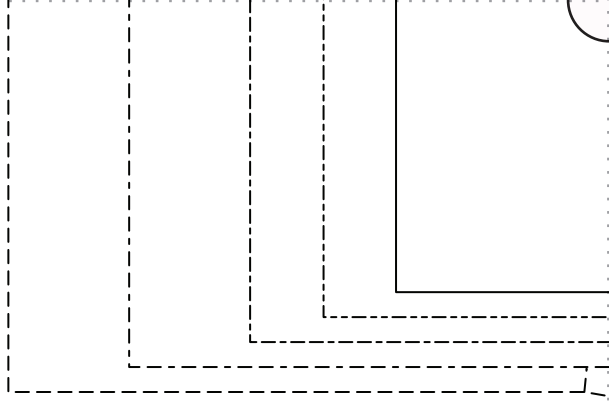
the thread

FABRICS-STORE.COM

FRONT: CUT 2 (FACE TO FACE)

BACK: CUT 1 ON FOLD

-9- *Button-Down Pleated Dress*



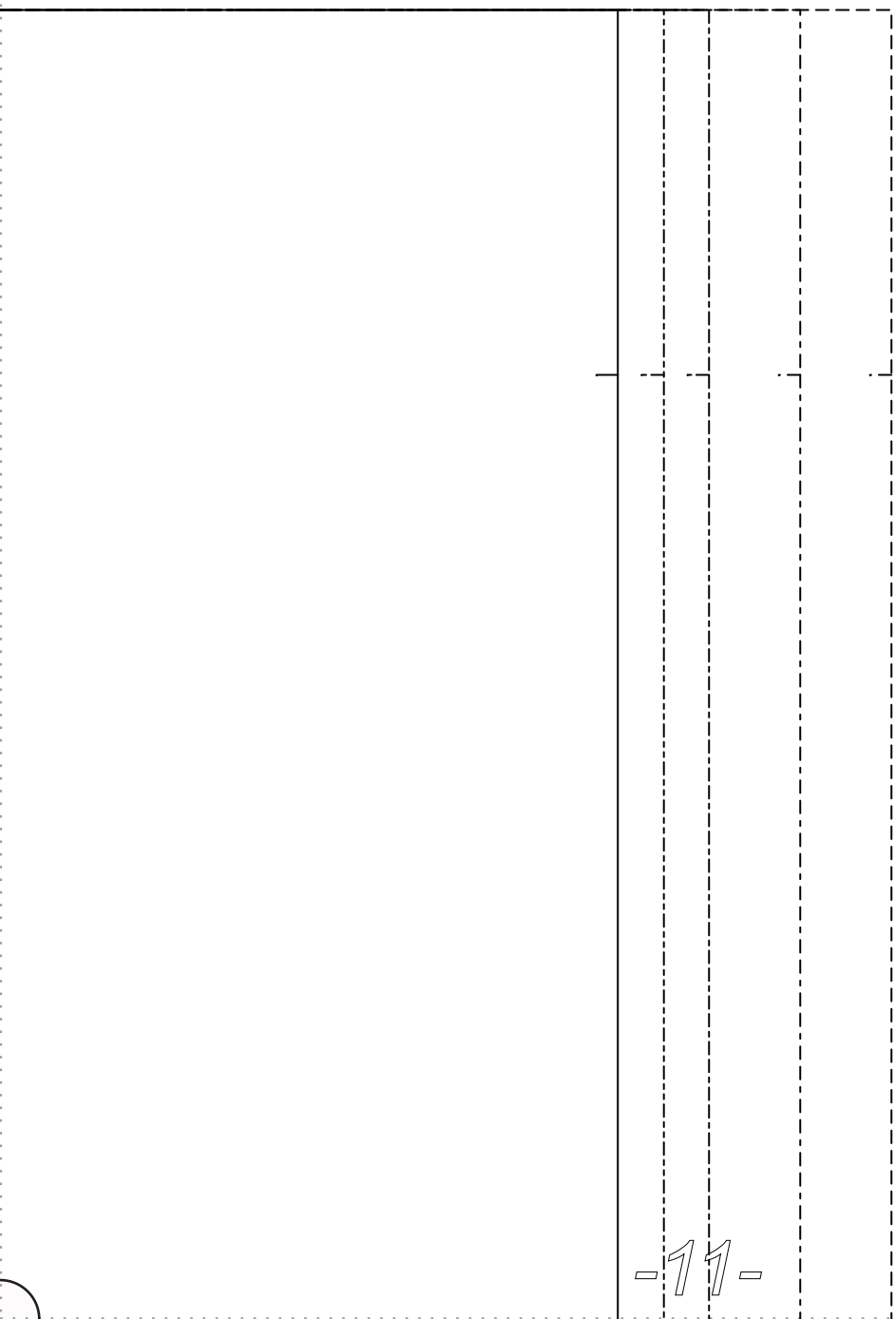
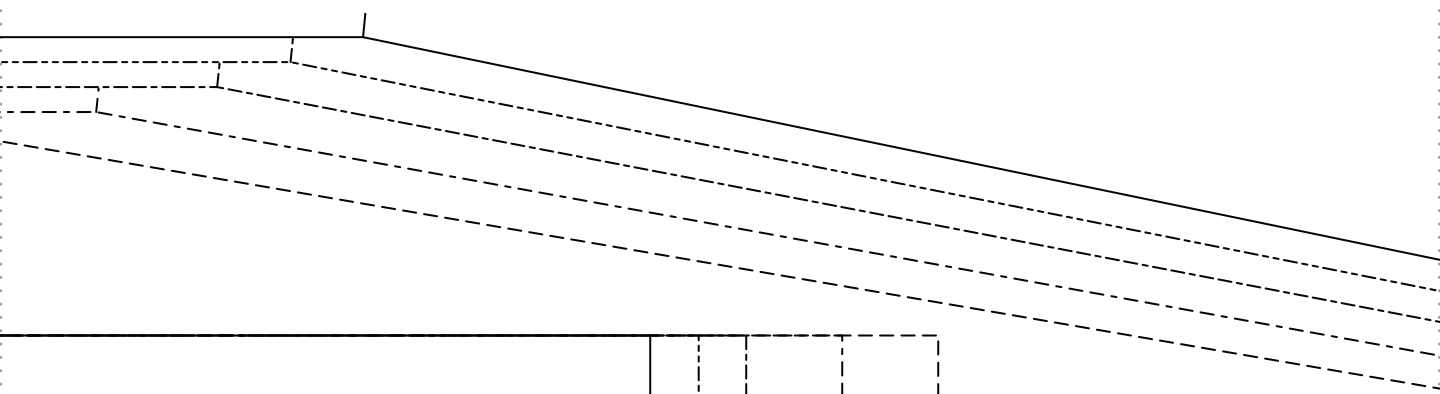
PLEAT

PLEAT

3/8"
SEAM ALLOWANCES
INCLUDED

FACE)

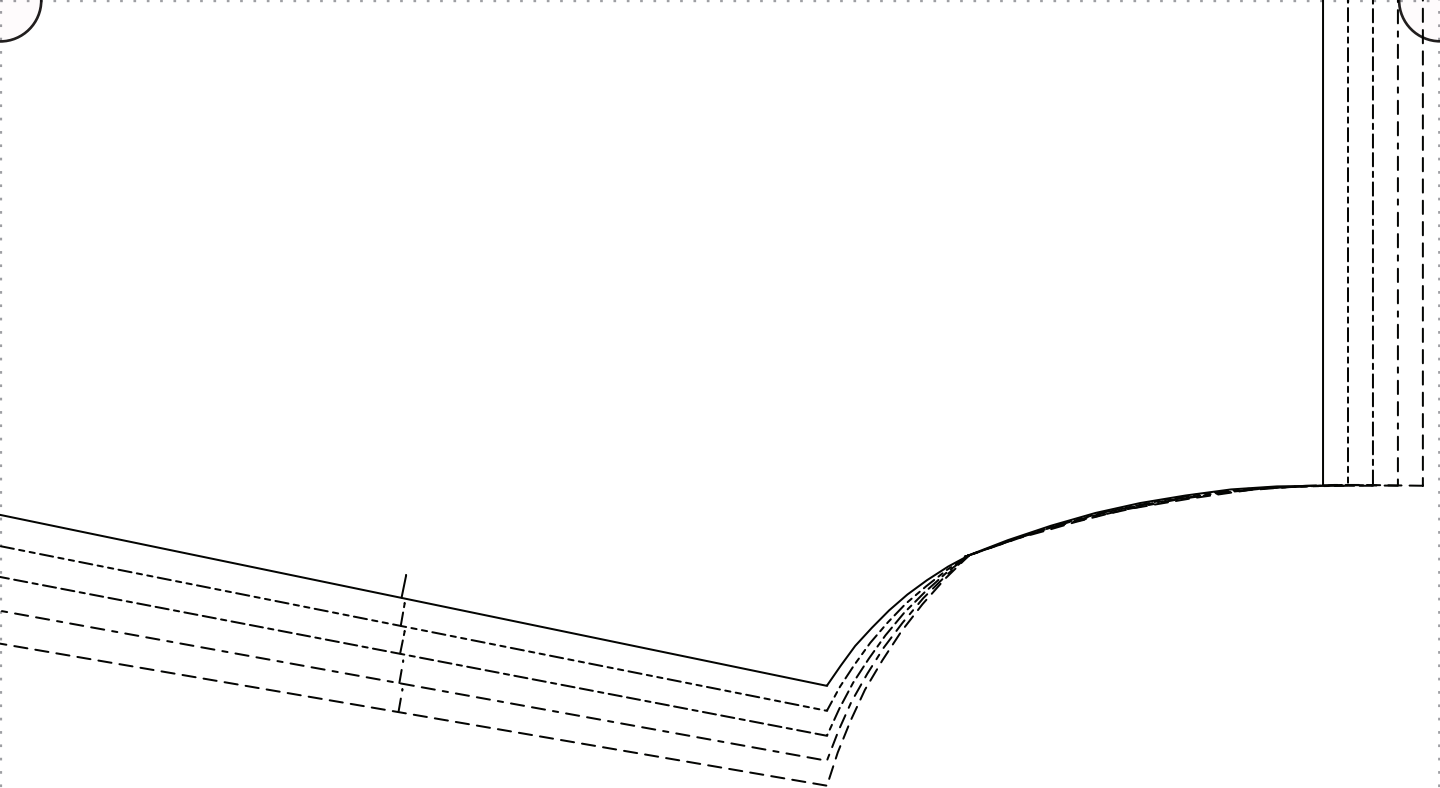
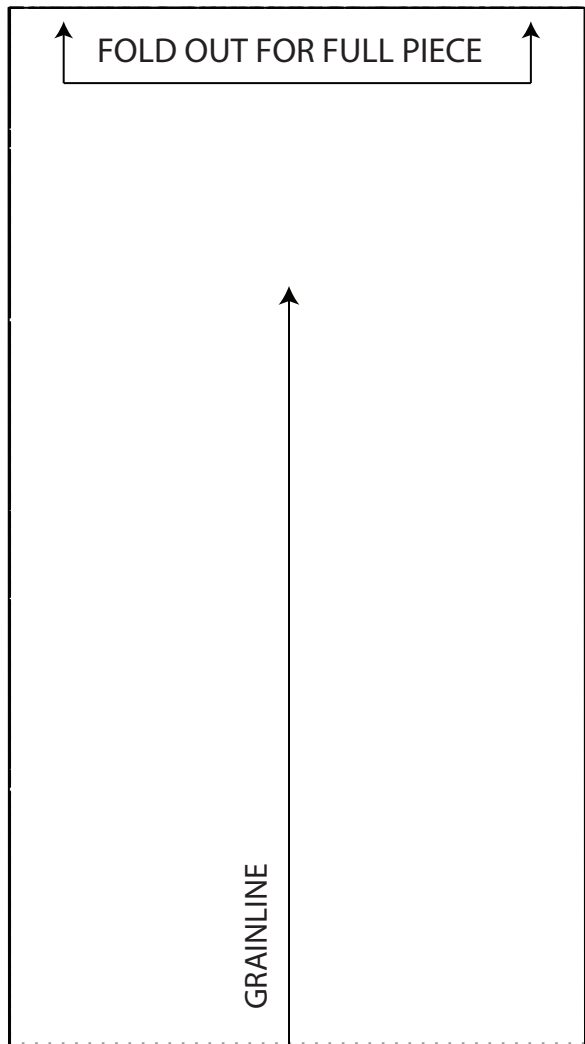
ess



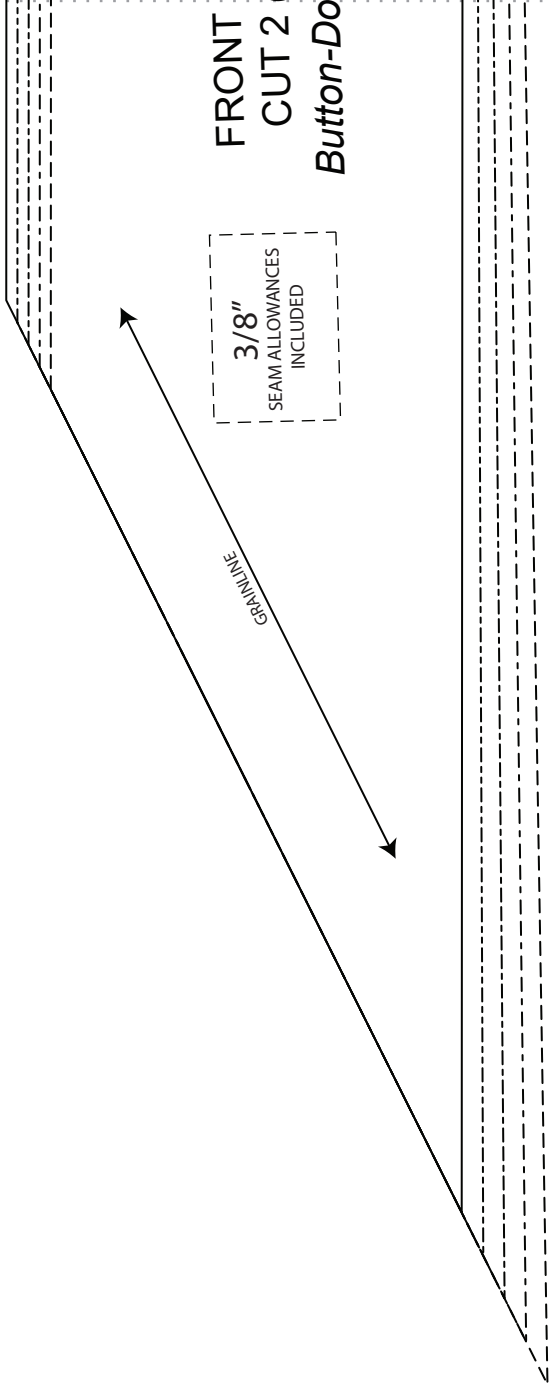
NECK FACING:
(FACE TO FACE)

Own Pleated Dress

the thread
FABRICS-STORE.COM



CENTER BACK CUT ON FOLD



the thread
 FABRICS-STORE.COM

BUTTON BAND: CUT 2

Button-Down Pleated Dress



