

F|S

FABRICS-STORE.COM

*Our linen is nothing short of addicting*

# DANA JUMPSUIT



## JUMP TO IT

*In the last couple of years jumpsuits are everywhere. We love jumpsuits for the same reason we love dresses: they are a one item outfit, which makes getting dressed a no-brainer.*

Available in Ladies Sizes 0/2 to 28/30

866.620.2008 ASK@FABRICS-STORE.COM FABRICS-STORE.COM

---

# DANA PATTERN

---

*Our Dana jumpsuit is the perfect one-piece to make you look fabulous without overthinking it. With its fitted bodice, a detachable belt to cinch the waist and slightly tapered cropped legs, this sewing pattern has a flattering fit that can be easily adjusted to suit your body type.*

*Sized for ladies 0/2 to 28/30*

*Simple step-by-step instructions on our blog  
The Thread at [Fabrics-Store.com](http://Fabrics-Store.com)*

---

MASHA IS WEARING IL019 COBALT FS SIGNATURE FINISH - 100% LINEN - (5.3 OZ/YD<sup>2</sup>)



Our lovely model Masha is wearing Size 4/6.

# PATTERN DETAILS

#FABRICSSTOREDANAPATTERN



## DANA PATTERN

Ladies Duo Sizes: 0/2 to 28/30

- Semi-fitted.
- Button straps.
- Capris length.
- Self belt.
- Hidden side pockets.

## SEWING INSTRUCTIONS

This pattern is featured on our blog “The Thread” at [Fabrics-Store.com](http://Fabrics-Store.com). There you will find step-by-step photo instructions and can ask questions, post comments, or share your progress. Simply visit: [blog.fabrics-store.com](http://blog.fabrics-store.com) and enter “Dana Pattern” in the search box.

## SIZING & YARDAGE

Ladies Size Guide Based on Body Measurements in Inches

Size	0/2	4/6	8/10	12/14	16/18	20/22	24/26	28/30
Bust	33-34	35-36	37-38	39-40	42-44	46-48	50-52	54-56
Waist	25-26	27-28	29-30	31-32	34-36	38-40	42-44	46-48
Hip	35-36	37-38	39-40	41-42	44-46	48-50	52-54	56-58

Finished Garment Measurements - Approximate in Inches

Size	0/2	4/6	8/10	12/14	16/18	20/22	24/26	28/30
Bust	35	37	39.5	42	46	50	54.5	59
Waist	35	37	39.5	42	46	50	54.5	59
Hips	40	42	44.5	47	51	55	59.5	64

Estimated Yardage - 54" Width Linen\*

Size	0/2	4/6	8/10	12/14	16/18	20/22	24/26	28/30
Yardage*	2.5 Yards				3.5 Yards			

\*Allow up to 10% extra fabric for shrinkage.

ALL SEAM ALLOWANCES ARE INCLUDED AND NOTED ON THE PATTERN AND IN THE TUTORIAL.



*“Dana” Sewing Pattern*

For instructions visit: [blog.fabrics-store.com](http://blog.fabrics-store.com) and enter “Dana Pattern” in the search box.

**2 Inch  
Square to  
Check Print  
Accuracy**

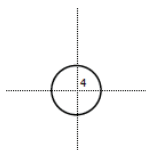
**Layered PDF:**

This pattern has embedded layers so you can print all sizes or a single size. See your .pdf viewers 'Layers' menu.

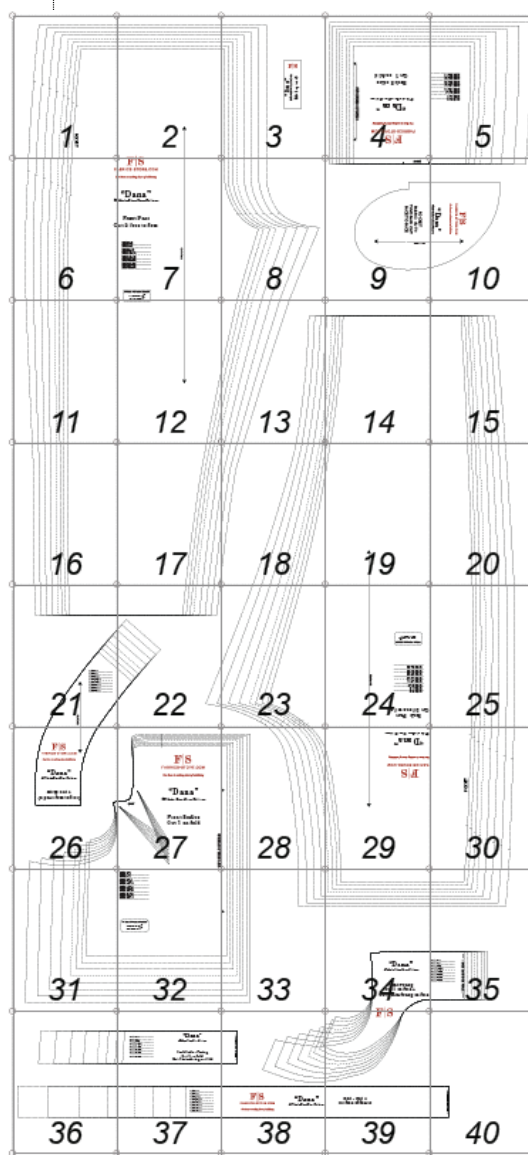
**PRINT ONLY THIS PAGE FIRST TO CHECK SCALE**

**IMPORTANT! PRINT AT ACTUAL SIZE, 100%, OR NO SCALING.**

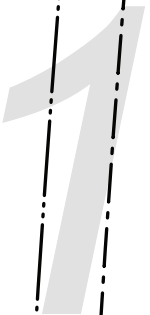
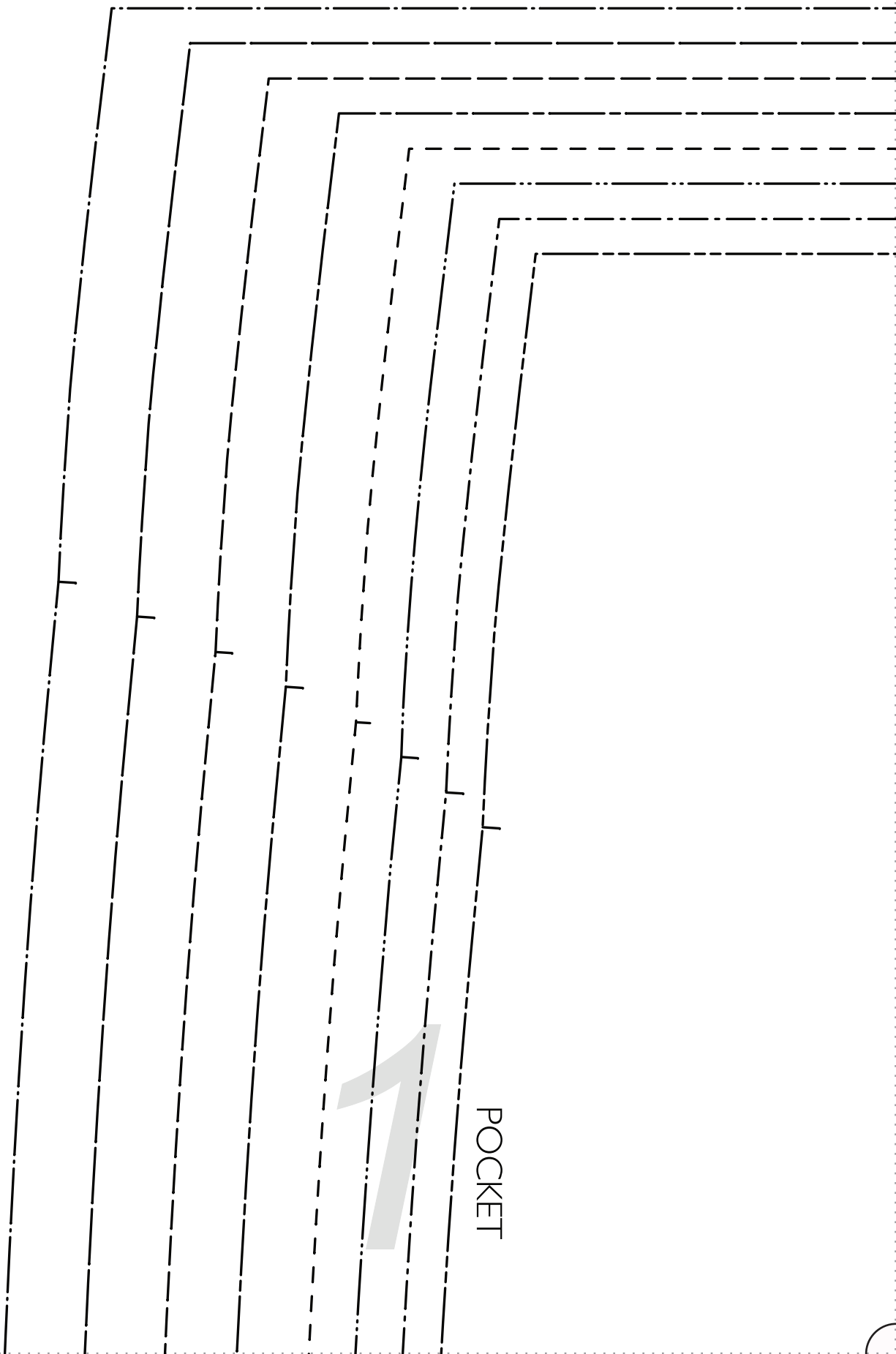
*Formatted for paper sizes A4 and Letter.*



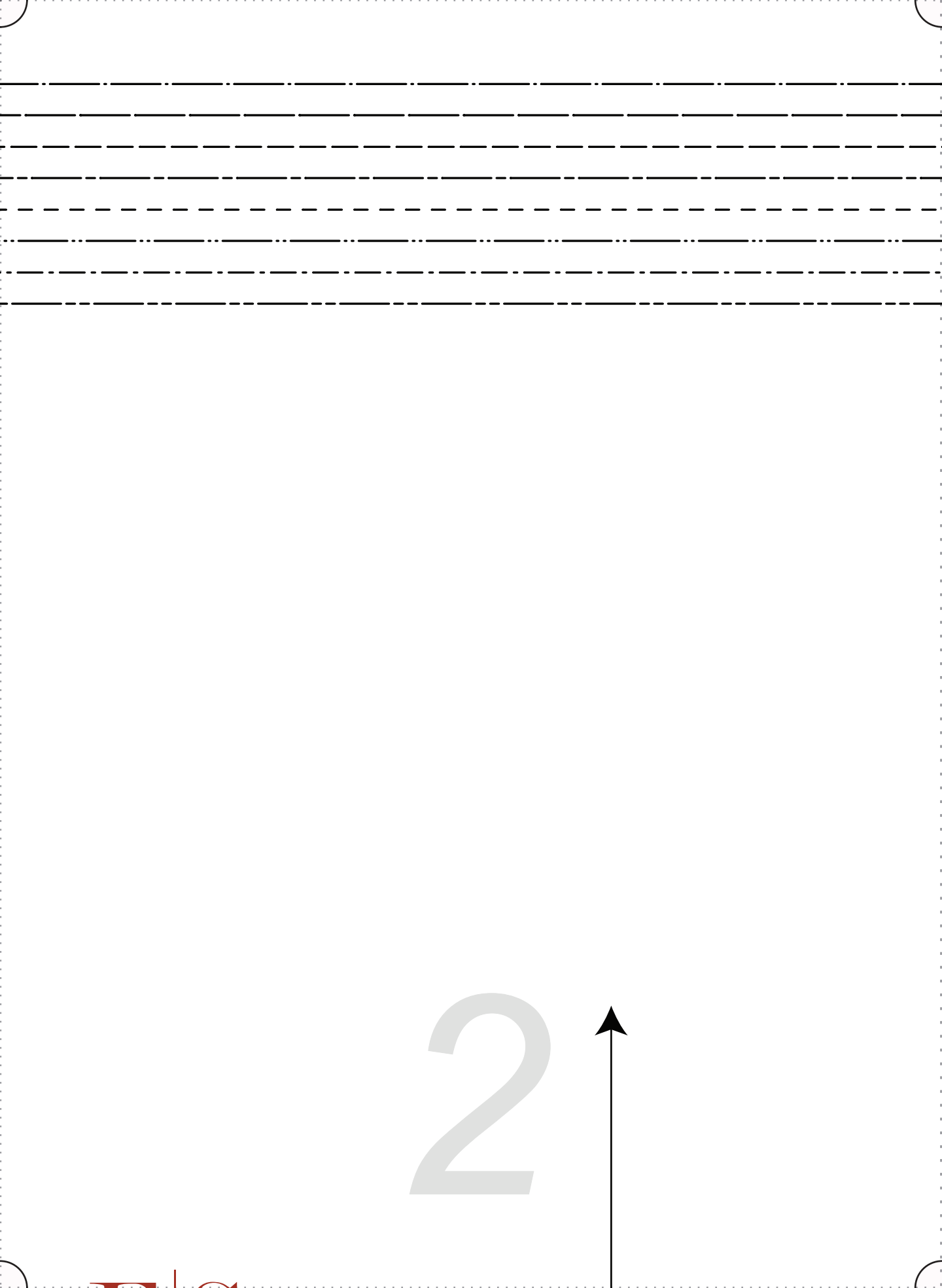
Simply overlap the page margins and align the markings in each corner to complete the circle and tape in place.



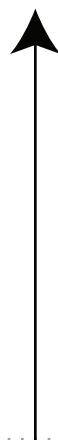
For instructions visit: [blog.fabrics-store.com](http://blog.fabrics-store.com) and enter “Dana Pattern” in the search box.

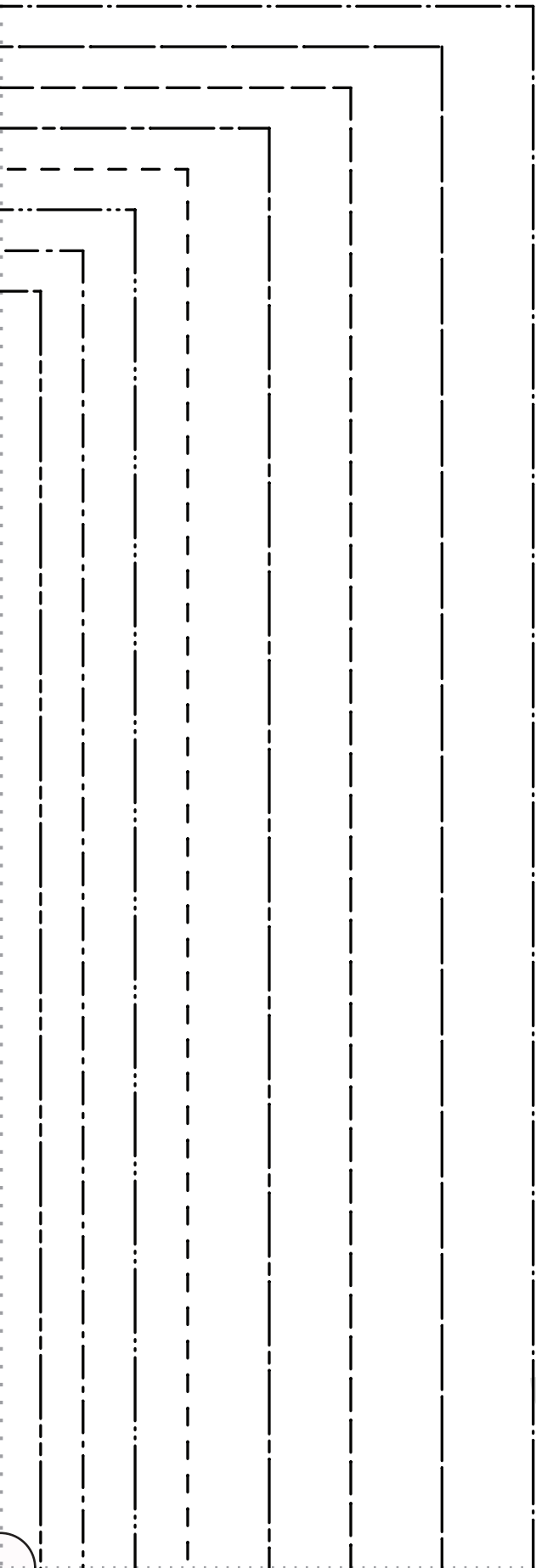


POCKET



2





3

“Dana”

#FabricsStoreDanaPattern

Belt loop - cut 2

F/S



“Dana”  
#FabricsStoreDanaPattern

Back Bodice  
Cut 1 on fold

CUT ON FOLD OF FABRIC



5

SIZE 0/2

SIZE 4/6

SIZE 8/10

SIZE 12/14

SIZE 16/18

SIZE 20/22

SIZE 24/26

SIZE 28/30

F

C

#

C

6

## “Dana”

FabricsStoreDanaPattern

Front Pant  
Cut 2 face to face

SIZE 0/2 .....SIZE 4/6 .....SIZE 8/10 .....SIZE 12/14 .....SIZE 16/18 .....SIZE 20/22 .....SIZE 24/26 .....SIZE 28/30 .....

GRAINLINE

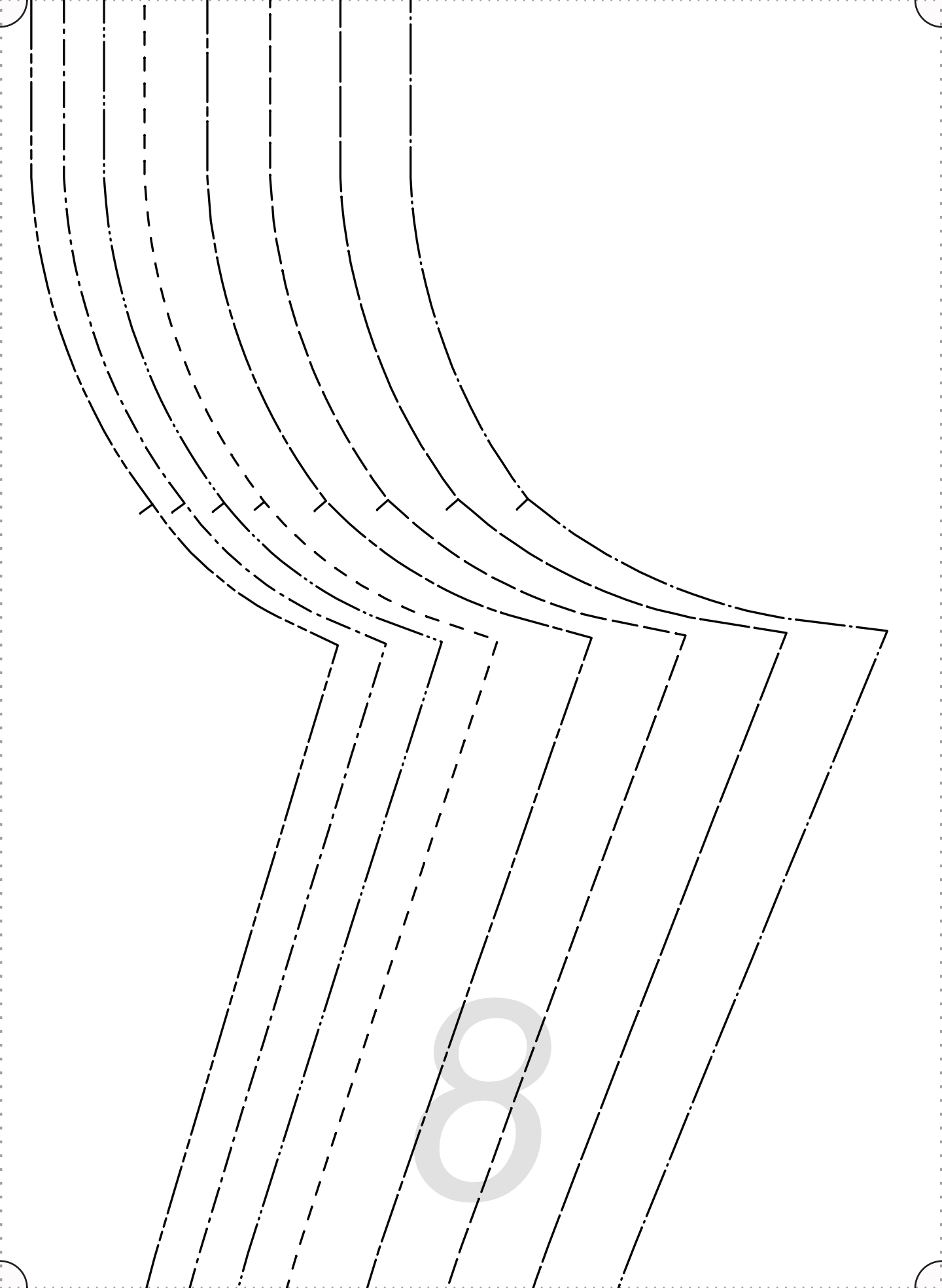
7

All Seam Allowances Included

Main seams: 3/8"

Bottom Hem: 1"





POCKET

FABRIC: CUT 4  
TWO PAIR CUT  
FACE TO FACE

GRAINLINE



9

10

F|S

FABRICS-STORE.COM

*Our linen is nothing short of addicting*

“Dana”

#FabricStoreDanaPattern



11





12

13

14

15



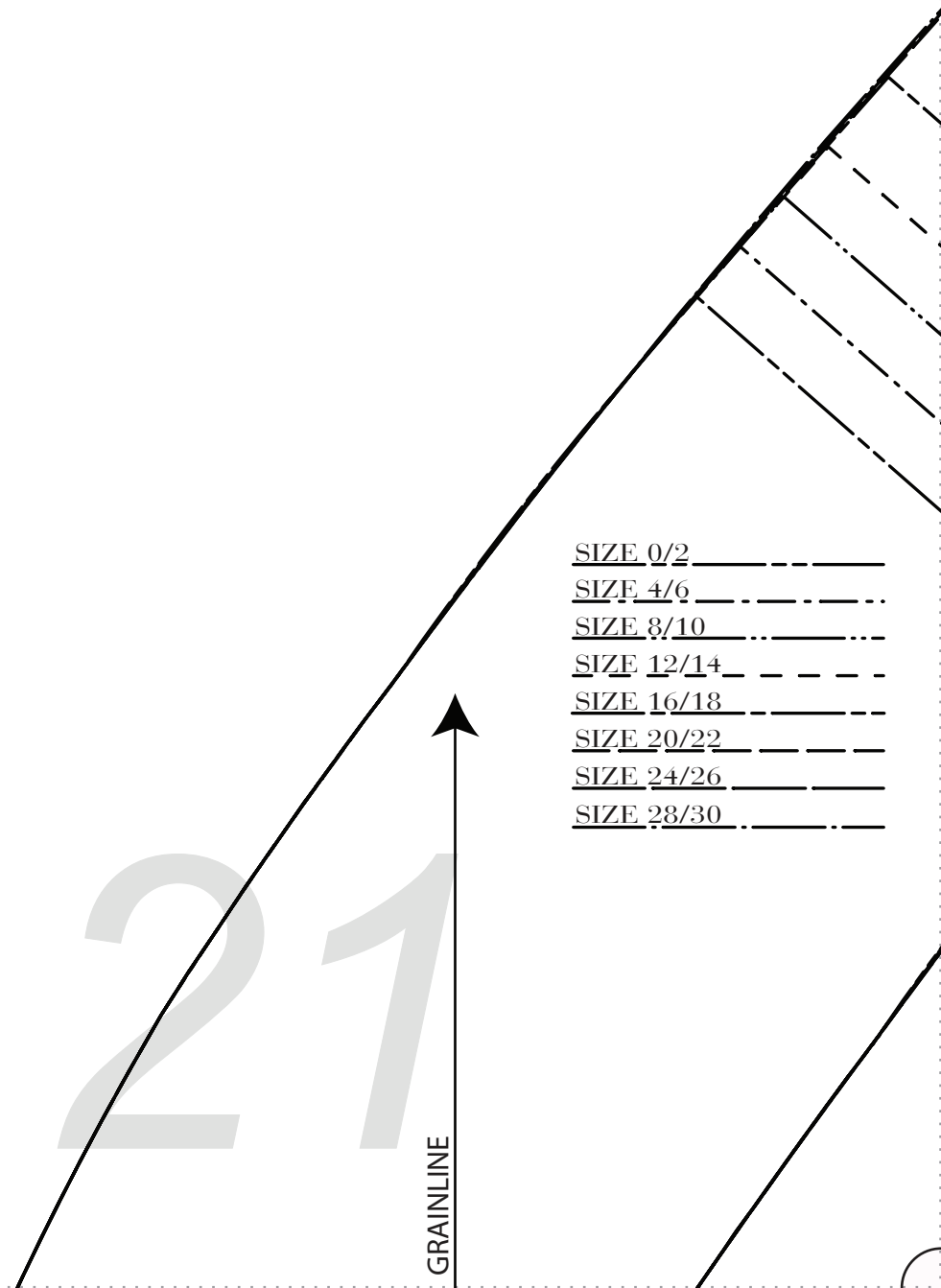
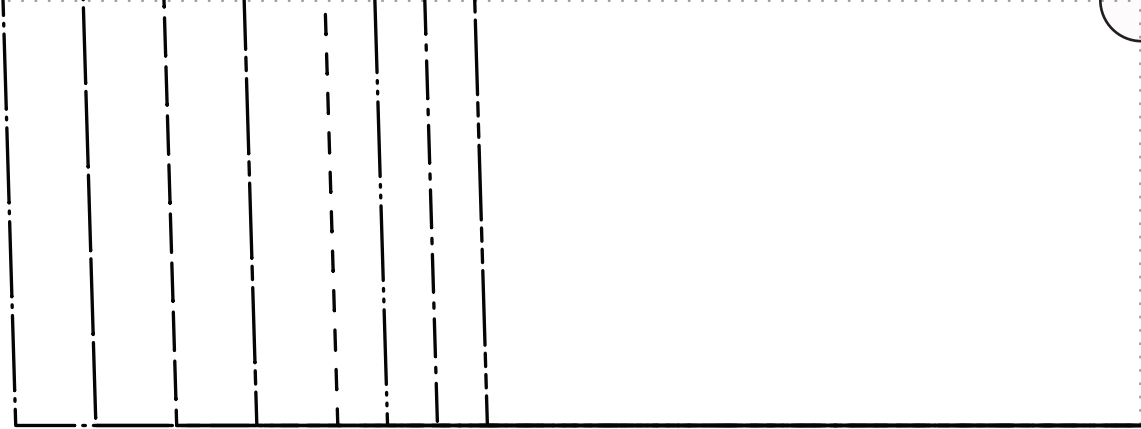
16

17

18

19

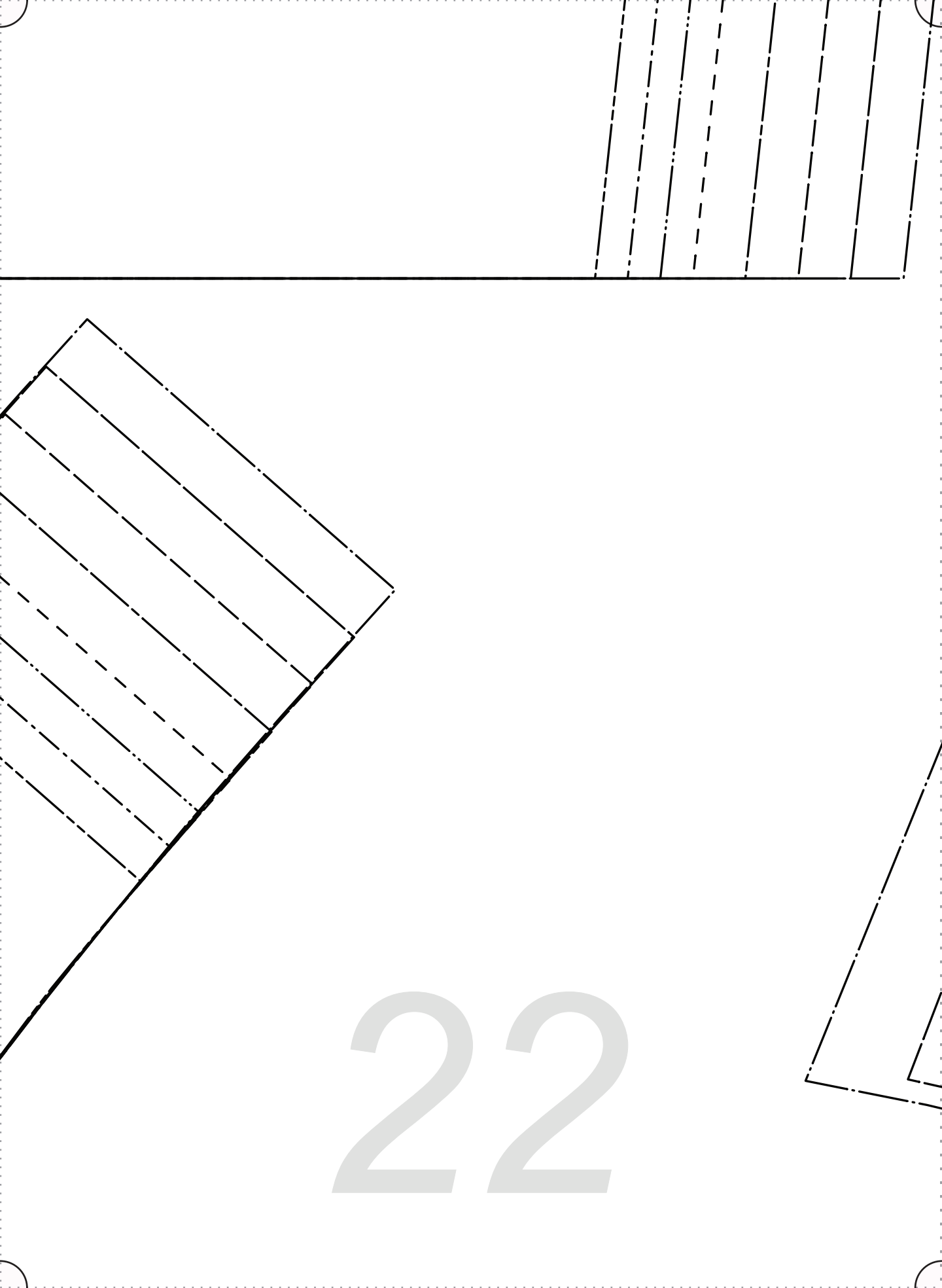
20



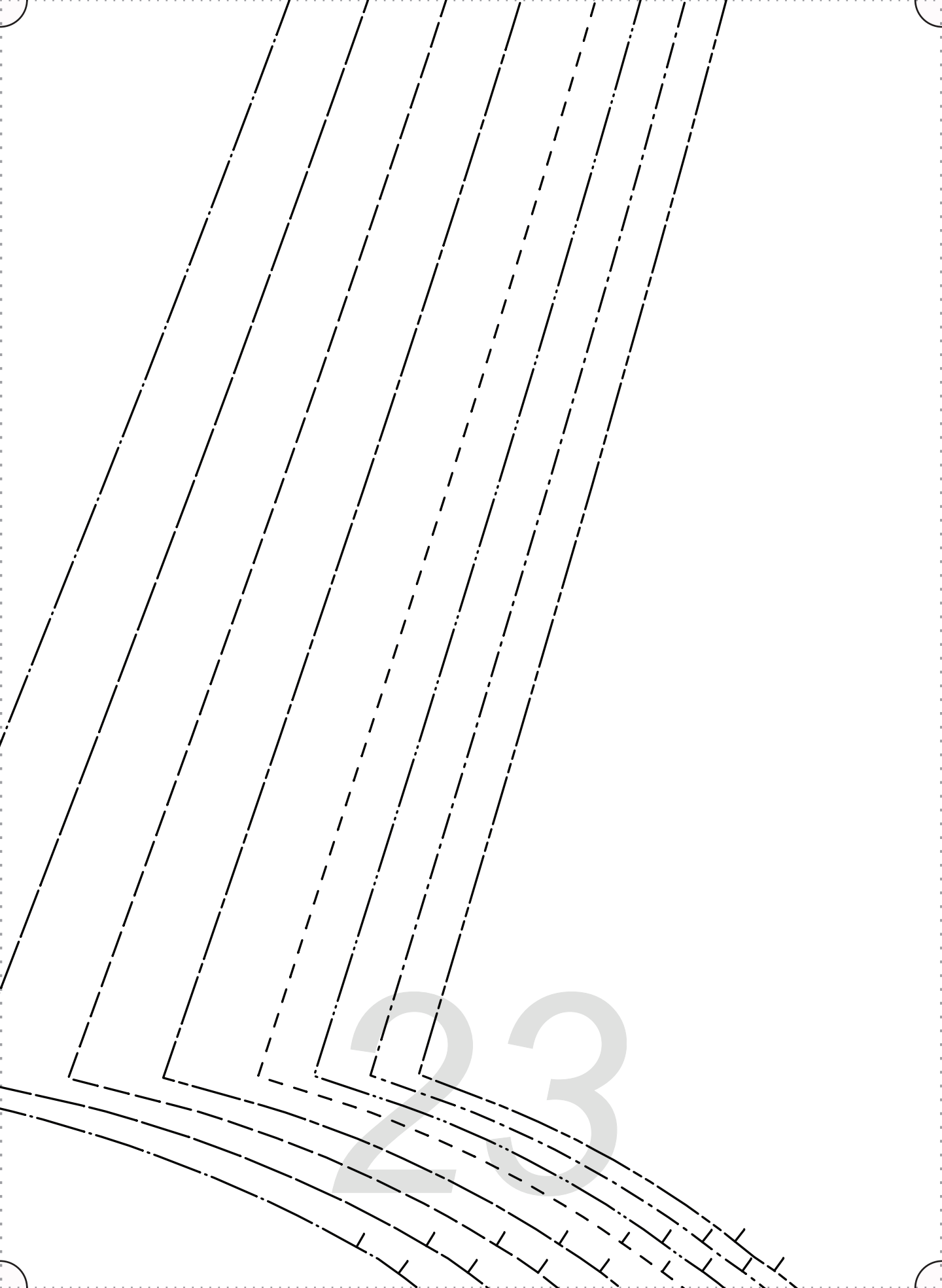
- SIZE 0/2 \_\_\_\_\_
- SIZE 4/6 \_\_\_\_\_
- SIZE 8/10 \_\_\_\_\_
- SIZE 12/14 \_\_\_\_\_
- SIZE 16/18 \_\_\_\_\_
- SIZE 20/22 \_\_\_\_\_
- SIZE 24/26 \_\_\_\_\_
- SIZE 28/30 \_\_\_\_\_

21

GRAINLINE



22





# Back Pant

## Cut 2 face to face

24

GRAINLINE

SIZE 0/2
SIZE 4/6
SIZE 8/10
SIZE 12/14
SIZE 16/18
SIZE 20/22
SIZE 24/26
SIZE 28/30

All Seam Allowances Included  
Main seams: 3/8"  
Bottom Hem: 1"

25



F|S

FABRICS-STORE.COM

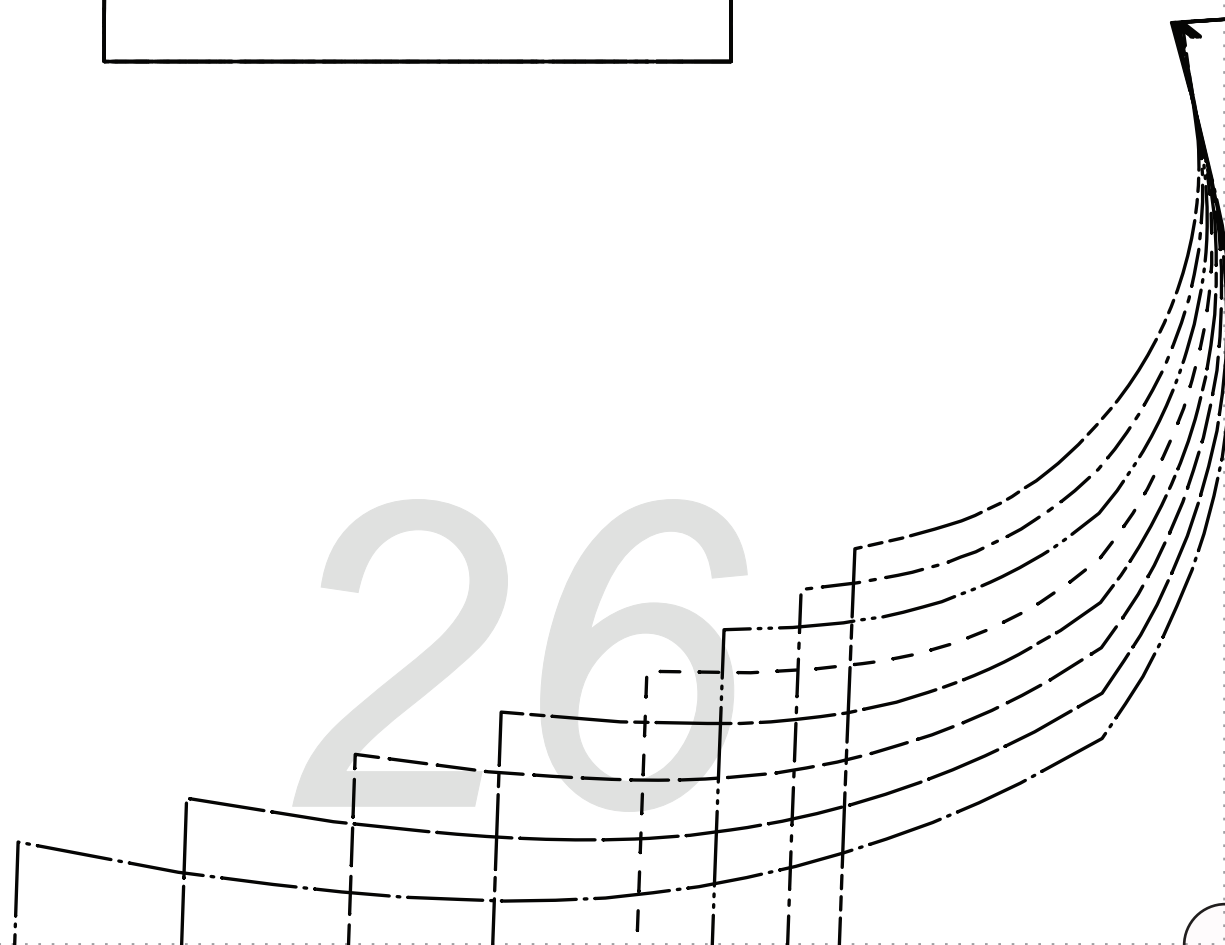
*Our linen is nothing short of addicting*

“Dana”

#FabricStoreDanaPattern

Strap Cut 4  
(2 pairs face to face)

26





F|S

FABRICS-STORE.COM

*Our linen is nothing short of addicting*

“Dana”

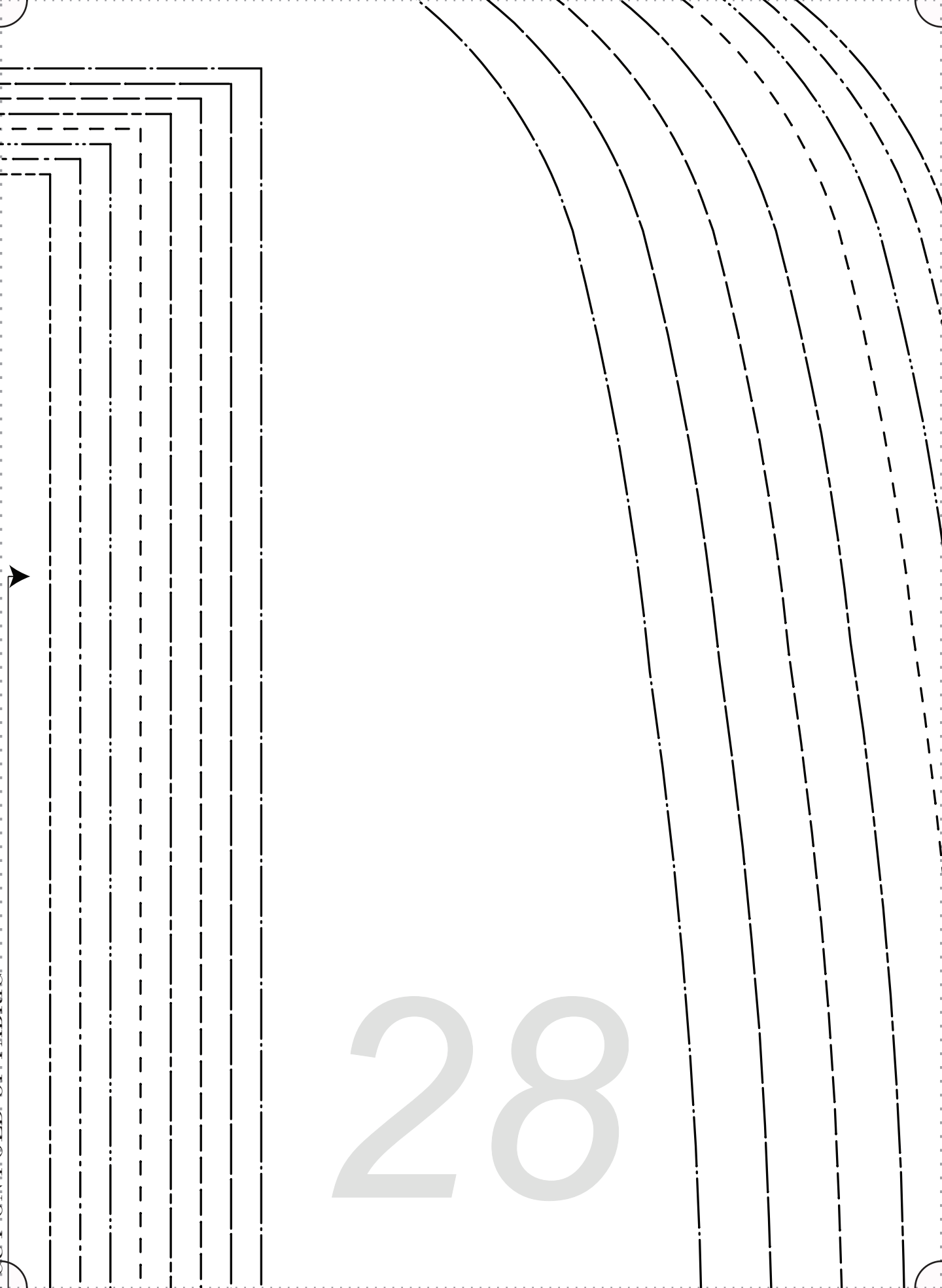
#FabricsStoreDanaPattern

DART

Front Bodice  
Cut 1 on fold

27

CUT ON FOLD OF FABRIC



28

# “Dana”

*Our linen is nothing short of adding*

FABRICS-STORE.COM

## F|S



# 29

POCKET

1

1

1

1

1

1

1

1

1

1

1

1

1

1

1

1

31



SIZE 0/2

SIZE 4/6

SIZE 8/10

SIZE 12/14

SIZE 16/18

SIZE 20/22

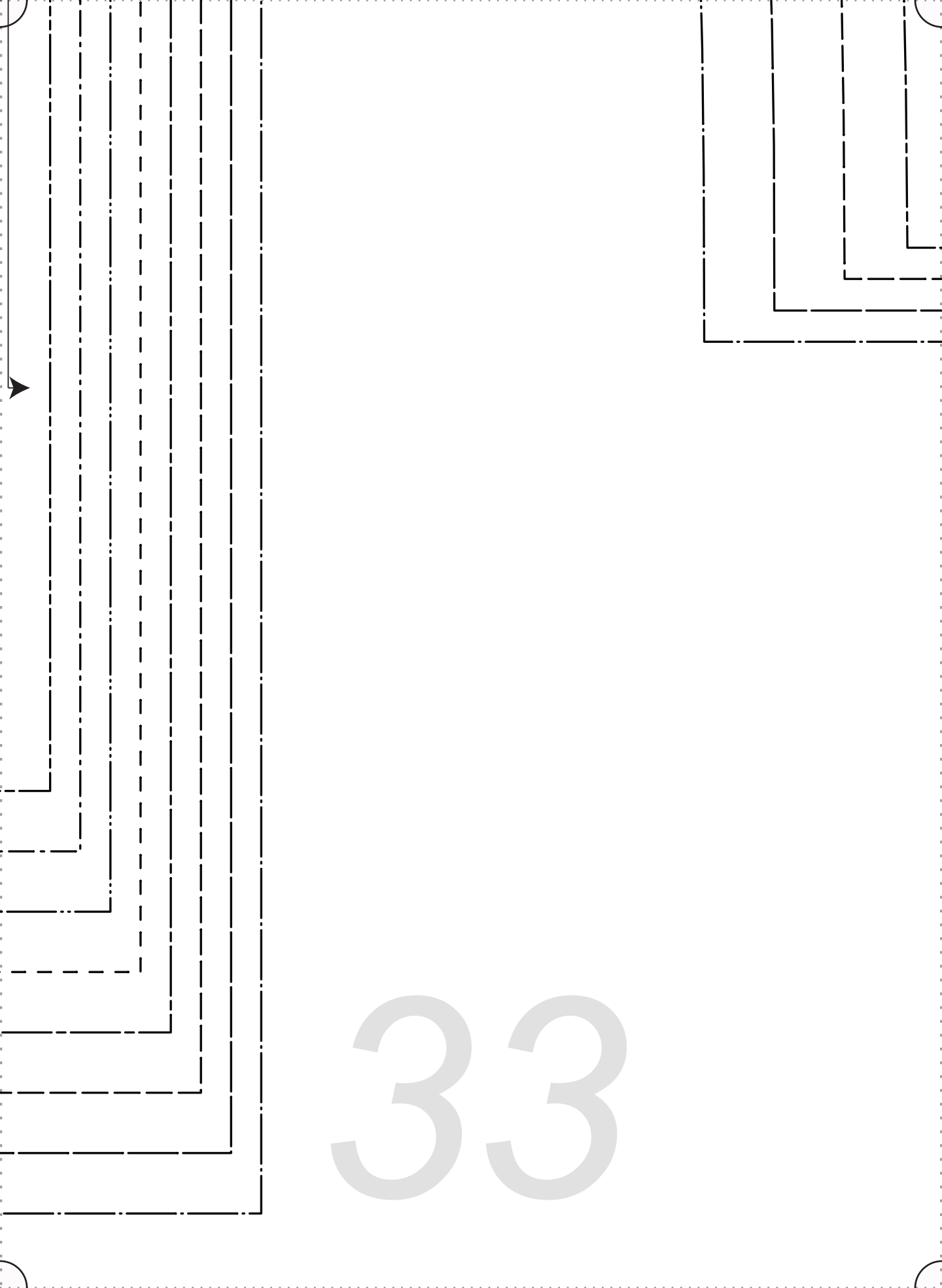
SIZE 24/26

SIZE 28/30

All Seam Allowances Included

Main seams:  $\frac{3}{8}$ "

Bottom Hem: 1"

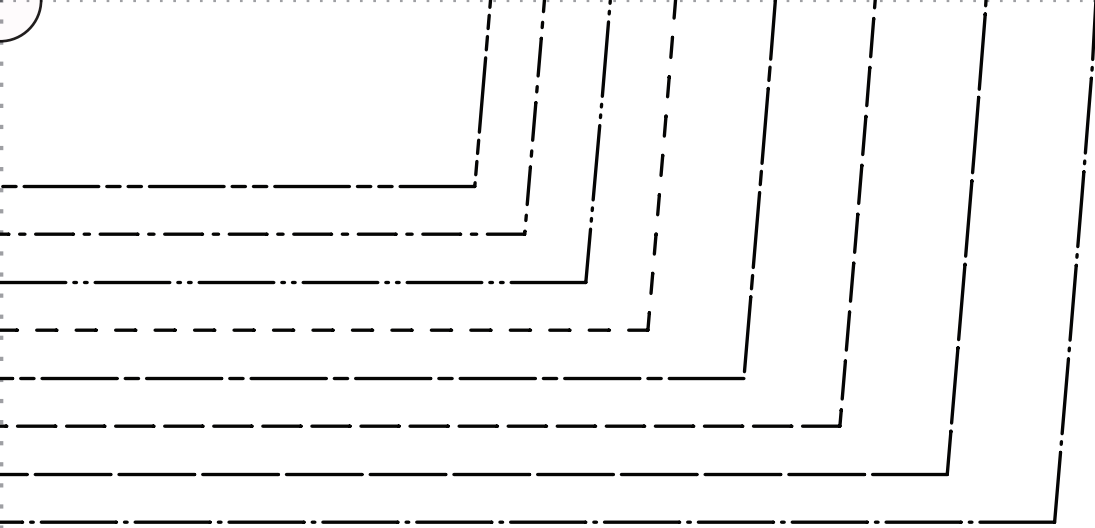


33

# “Dana”

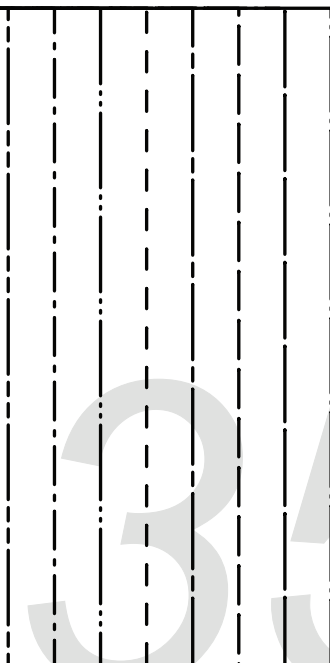
#FabricsStoreDanaPattern

Front Facing  
Cut 1 on fold +  
Cut 1 interfacing on fold

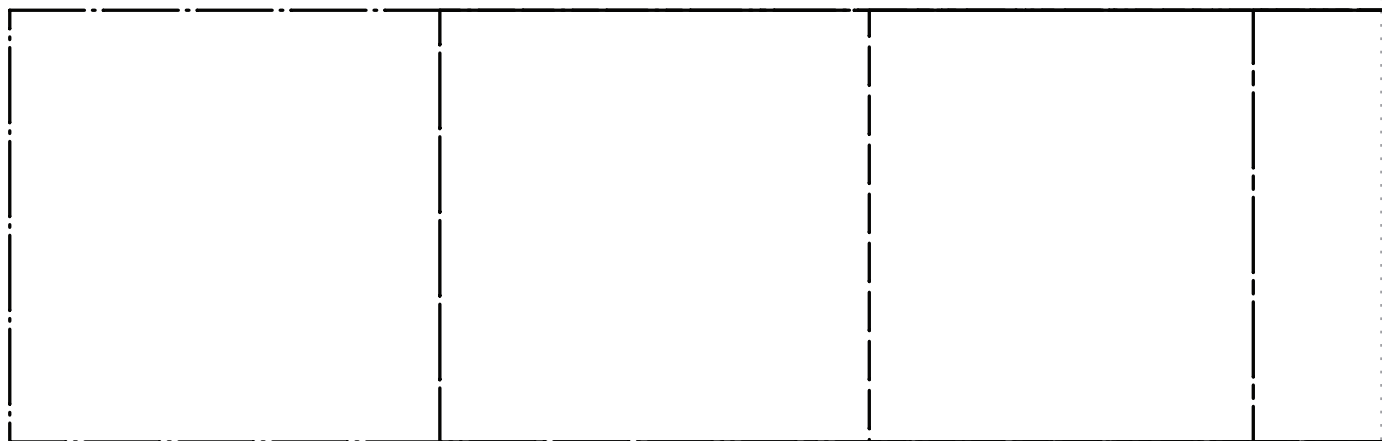
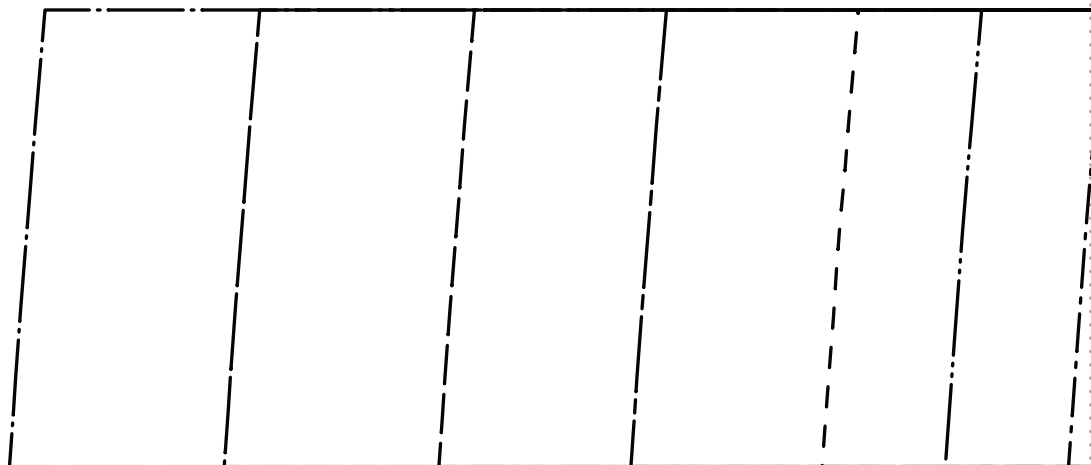


SIZE 0/2 \_\_\_\_\_  
SIZE 4/6 \_\_\_\_\_  
SIZE 8/10 \_\_\_\_\_  
SIZE 12/14 \_\_\_\_\_  
SIZE 16/18 \_\_\_\_\_  
SIZE 20/22 \_\_\_\_\_  
SIZE 24/26 \_\_\_\_\_  
SIZE 28/30 \_\_\_\_\_

^^^ PLACE ON FOLD OF FABRIC ^^^



35



36

SIZE 0/2 \_\_\_\_\_  
SIZE 4/6 \_\_\_\_\_  
SIZE 8/10 \_\_\_\_\_  
SIZE 12/14 \_\_\_\_\_  
SIZE 16/18 \_\_\_\_\_  
SIZE 20/22 \_\_\_\_\_  
SIZE 24/26 \_\_\_\_\_  
SIZE 28/30 \_\_\_\_\_

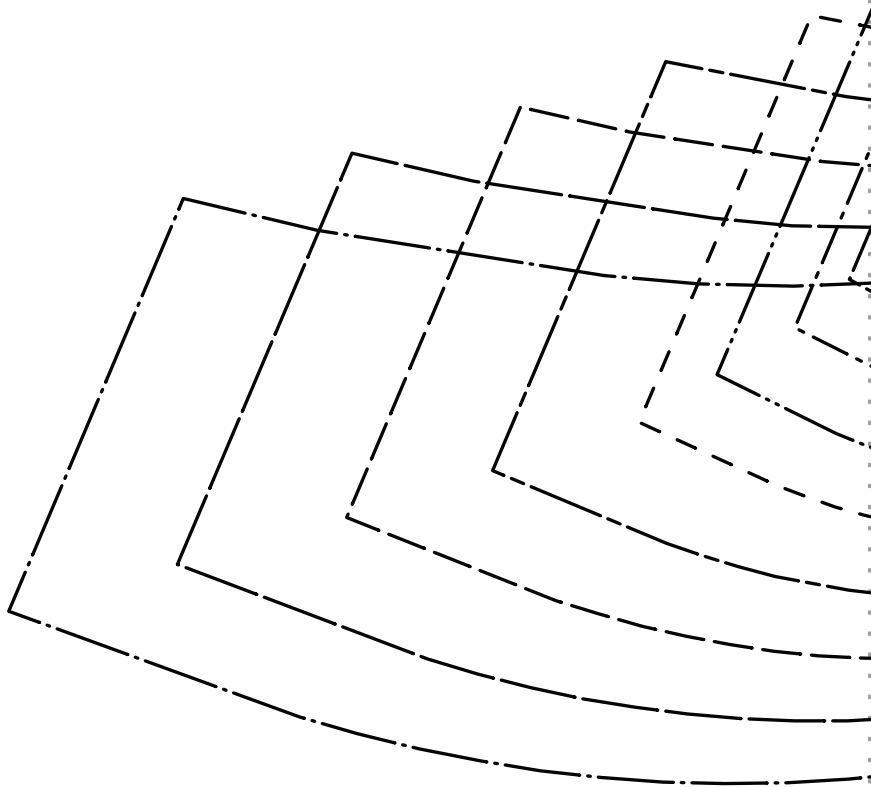
“Dana”

#FabricsStoreDanaPattern

Back Bodice Facing  
Cut 1 on fold  
Cut 1 interfacing on fold

SIZE 0/2 \_\_\_\_\_  
SIZE 4/6 \_\_\_\_\_  
SIZE 8/10 \_\_\_\_\_  
SIZE 12/14 \_\_\_\_\_  
SIZE 16/18 \_\_\_\_\_  
SIZE 20/22 \_\_\_\_\_  
SIZE 24/26 \_\_\_\_\_  
SIZE 28/30 \_\_\_\_\_

^^^ PLACE ON FOLD OF FABRIC ^^^



F|S

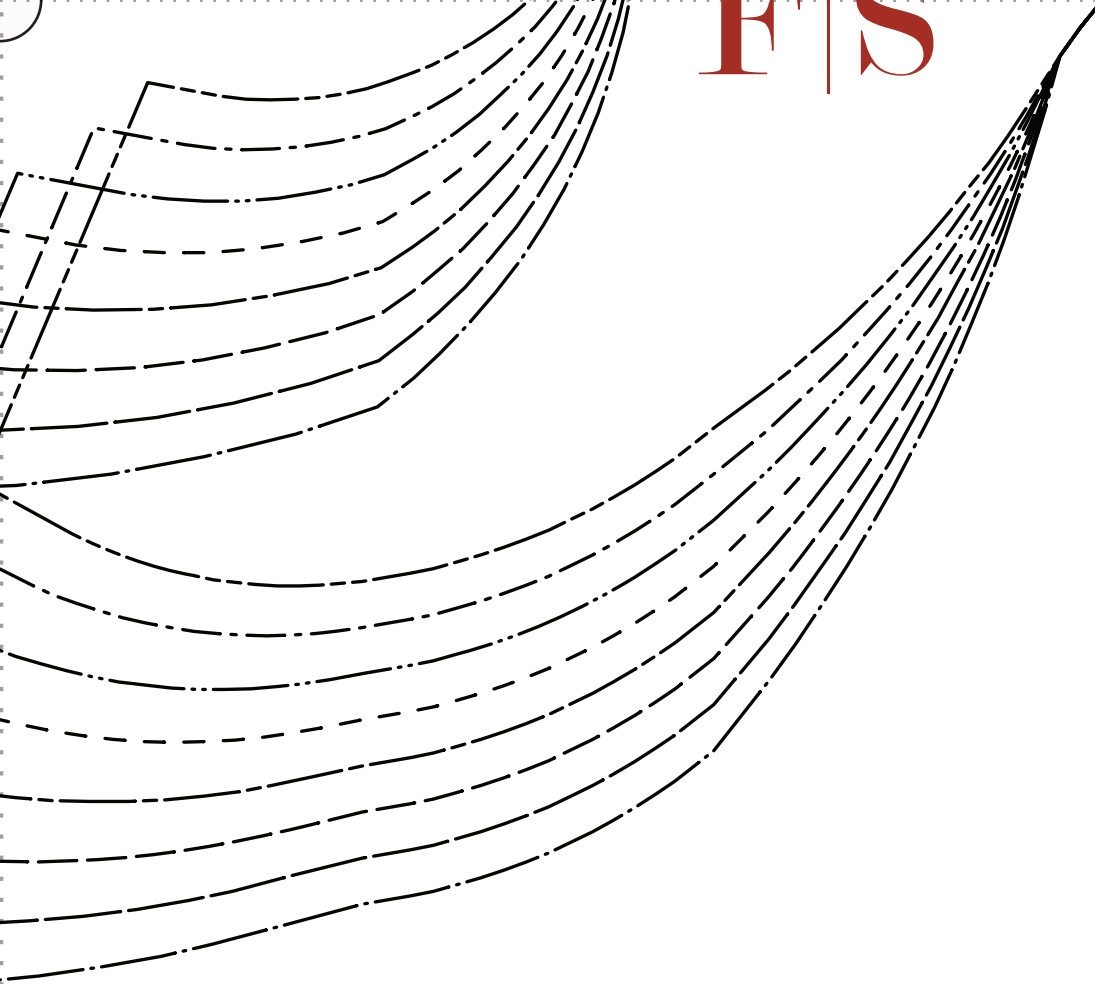
FABRICS-STORE.COM

*Our linen is nothing short of addicting*

“Dana”

#FabricsStoreDanaPattern

38



Belt - Cut 4  
On fold of fabric





40

---

# *Thank you*

---

*We work hard on making our patterns beautiful  
enough to meet your standards.*

*If you feel like sharing praise or helpful criticism,  
please send us your comments to [ask@fabrics-store.com](mailto:ask@fabrics-store.com)*