

F|S

FABRICS-STORE.COM

*Our linen is nothing short of addicting*

## *Half Sleeve Linen Dress*

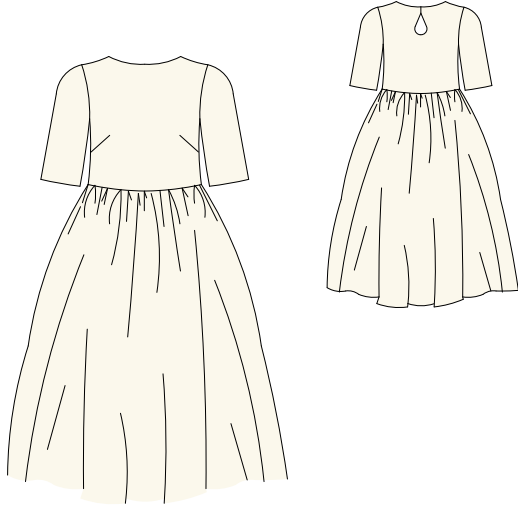
*A great dress to wear.  
Comfortable and loose  
yet elegant and charming.*

Misses/Women Sizes 0/2 to 24/26



Copyright © 2015-2016 Fabrics-store.com

# PATTERN DETAILS



## Layered PDF:

This pattern has embedded layers so you can print all sizes or a single size. See your .pdf viewers 'Layers' menu.

**Part 1 Includes:** Front/Back Bodice and Sleeves.

**Part 2 Includes:** Skirt

## Half Sleeve Linen Dress

Sizes: 0/2 to 24/26

“Loose Fit”

Now with optional bust darts!

## SIZING & YARDAGE

*Please choose size based on desired finished garment bust measurement.*

0/2	4/6	8/10	12/14	16/18	20/22	24/26
34"	36"	38"	41"	44"	48"	53"

3.5 yards for sizes 0 to 14.

4 yards for sizes 16 to 26.

(Shrinkage has been calculated)

## SEWING INSTRUCTIONS

This pattern is featured on our blog "The Thread" at [Fabrics-Store.com](http://Fabrics-Store.com). There you will find step-by-step photo instructions and can ask questions, post comments, or share your progress. Simply visit: [blog.fabrics-store.com](http://blog.fabrics-store.com) and enter "Cora Half-Sleeve Dress Pattern"

## Thank you

*We work hard on making our patterns beautiful enough to meet your standards. Please enjoy using our patterns to create a few sewn items for yourself, or many for sale.*

*If you feel like sharing praise or helpful criticism, please send us your comments to [ask@fabrics-store.com](mailto:ask@fabrics-store.com).*

## Pattern (Part 1) for our “Cora Half Sleeve Linen Dress” Tutorial

For instructions visit: [blog.fabrics-store.com](http://blog.fabrics-store.com) and enter “Cora Half Sleeve Pattern” in the search box.

2” Square  
Scale Test

**PRINT ONLY THIS PAGE FIRST TO CHECK SCALE**  
**IMPORTANT! PRINT AT ACTUAL SIZE, 100%, OR**  
**NO SCALING**

*Formatted for paper sizes A4 and Letter.*

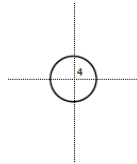
Sizes: 0/2 to 24/26  
Optional Front Bust Darts

*Please choose size based on desired finished garment bust measurement.*

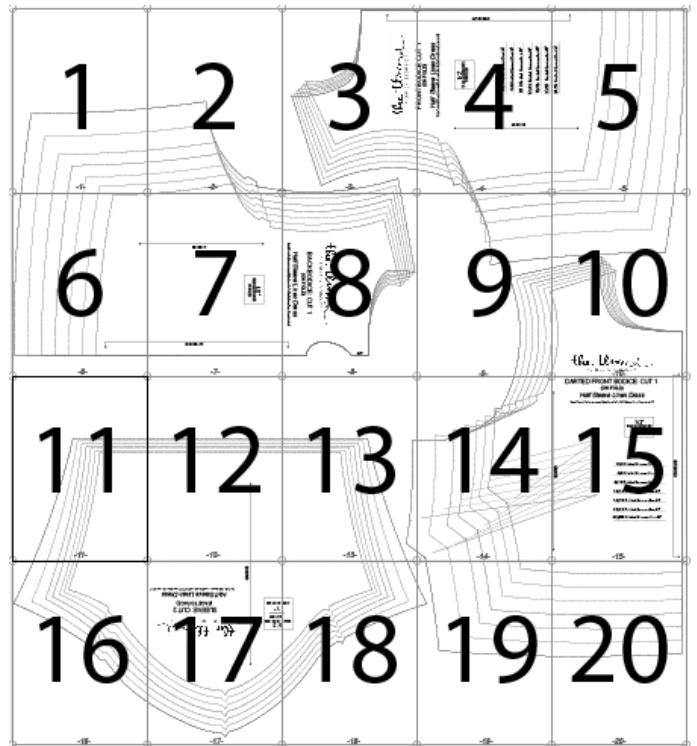
0/2	4/6	8/10	12/14	16/18	20/22	24/26
34"	36"	38"	41"	44"	48"	53"

### Layered PDF:

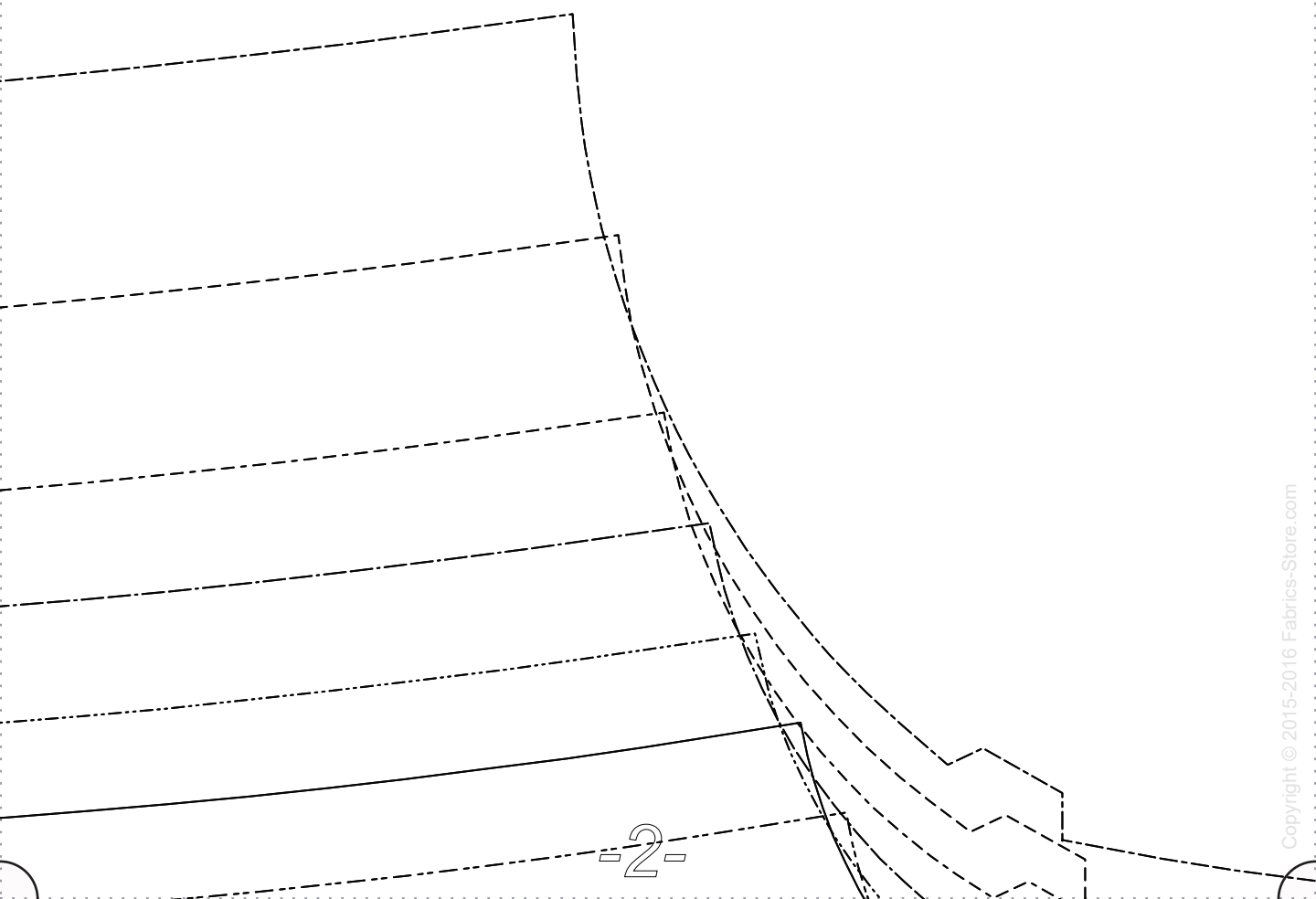
This pattern has embedded layers so you can print all sizes or a single size. See you .pdf viewers 'Layers' menu.

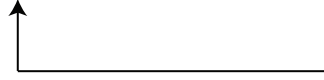
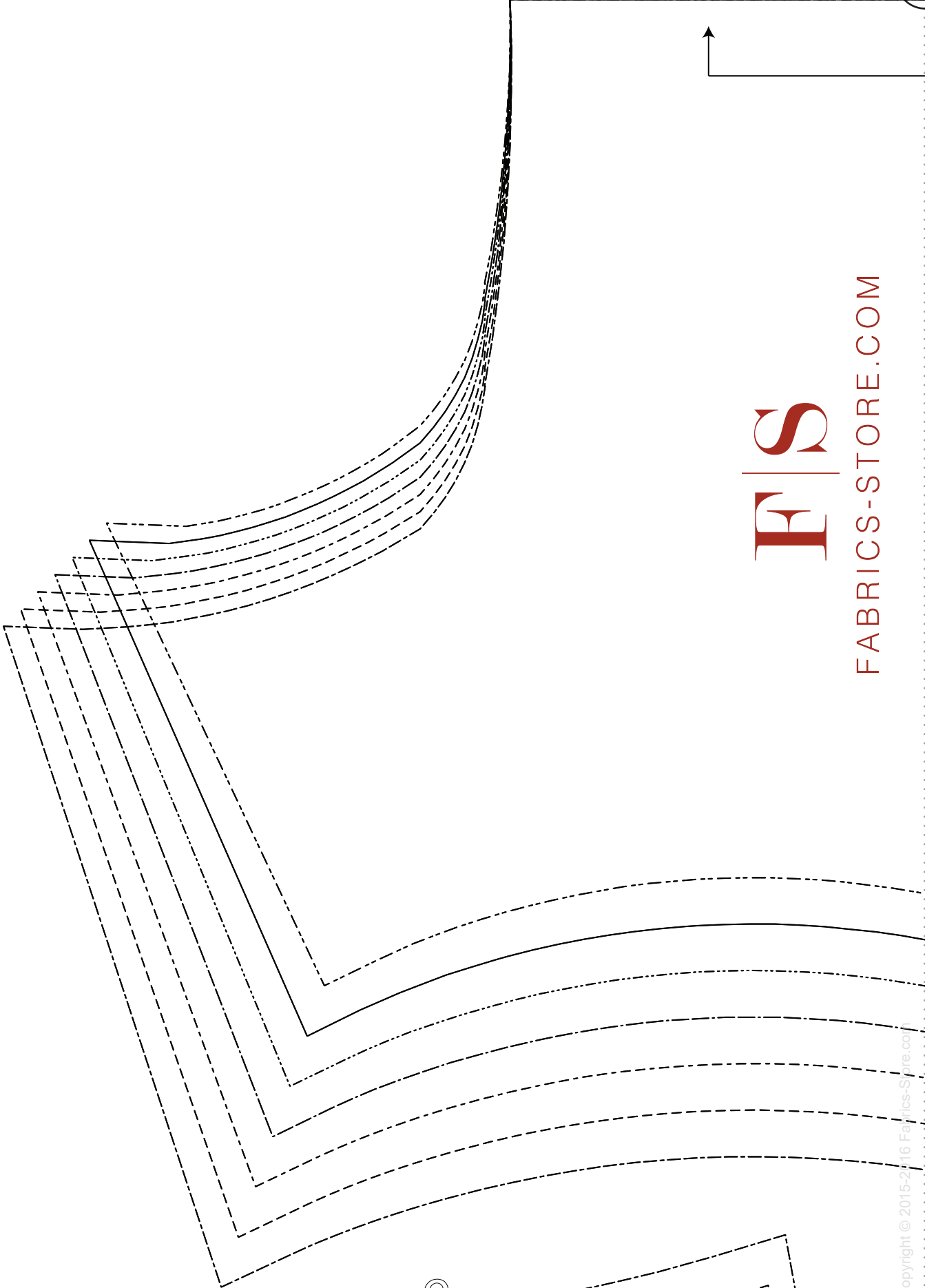


Simply overlap the page margins and align the markings in each corner to complete the circle and tape in place.



-1-





F|S

FABRICS-STORE.COM



CUT ON FOLD

# FRONT BODICE: CUT 1 (ON FOLD)

## *Cora Half Sleeve Linen Dress*

1/2"  
SEAM ALLOWANCES  
INCLUDED

0/2 Finished Garment Bust 34"

4/6 Finished Garment Bust 36"

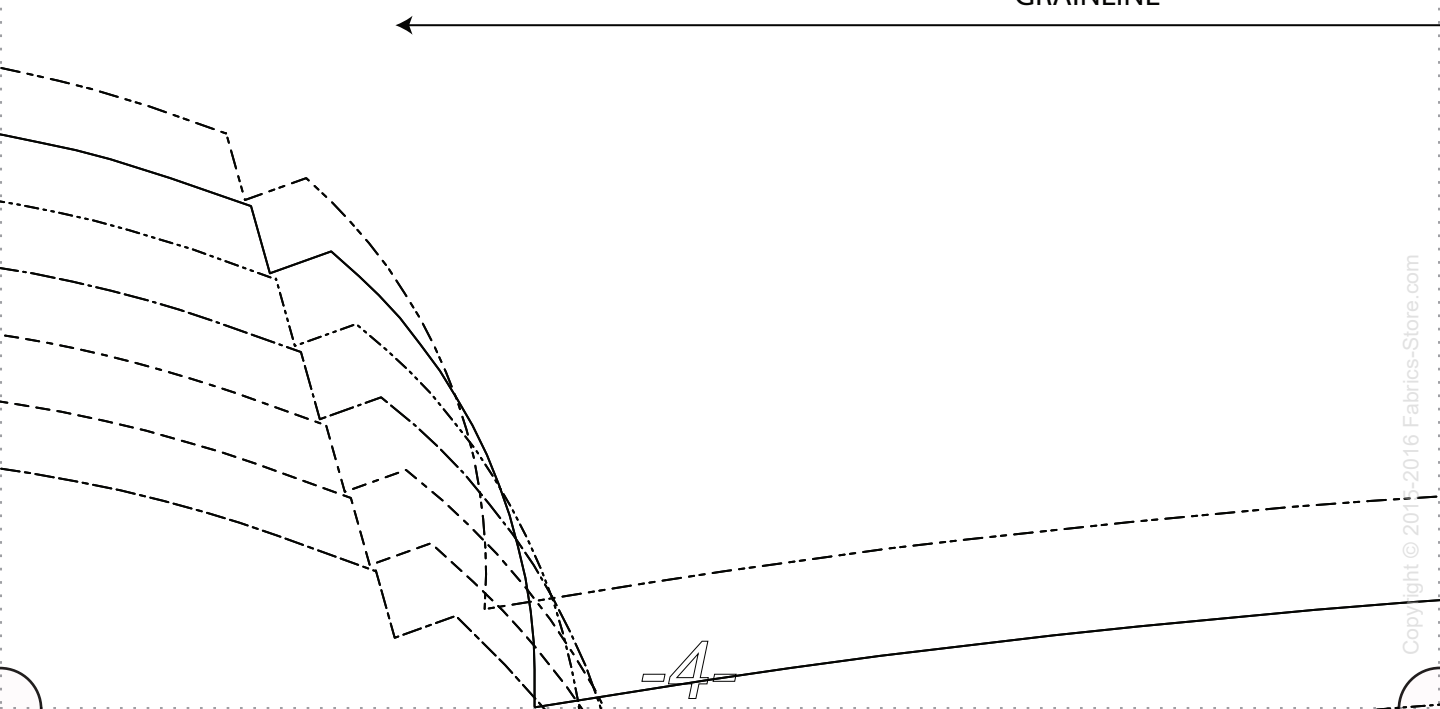
8/10 Finished Garment Bust 38"

12/14 Finished Garment Bust 41"

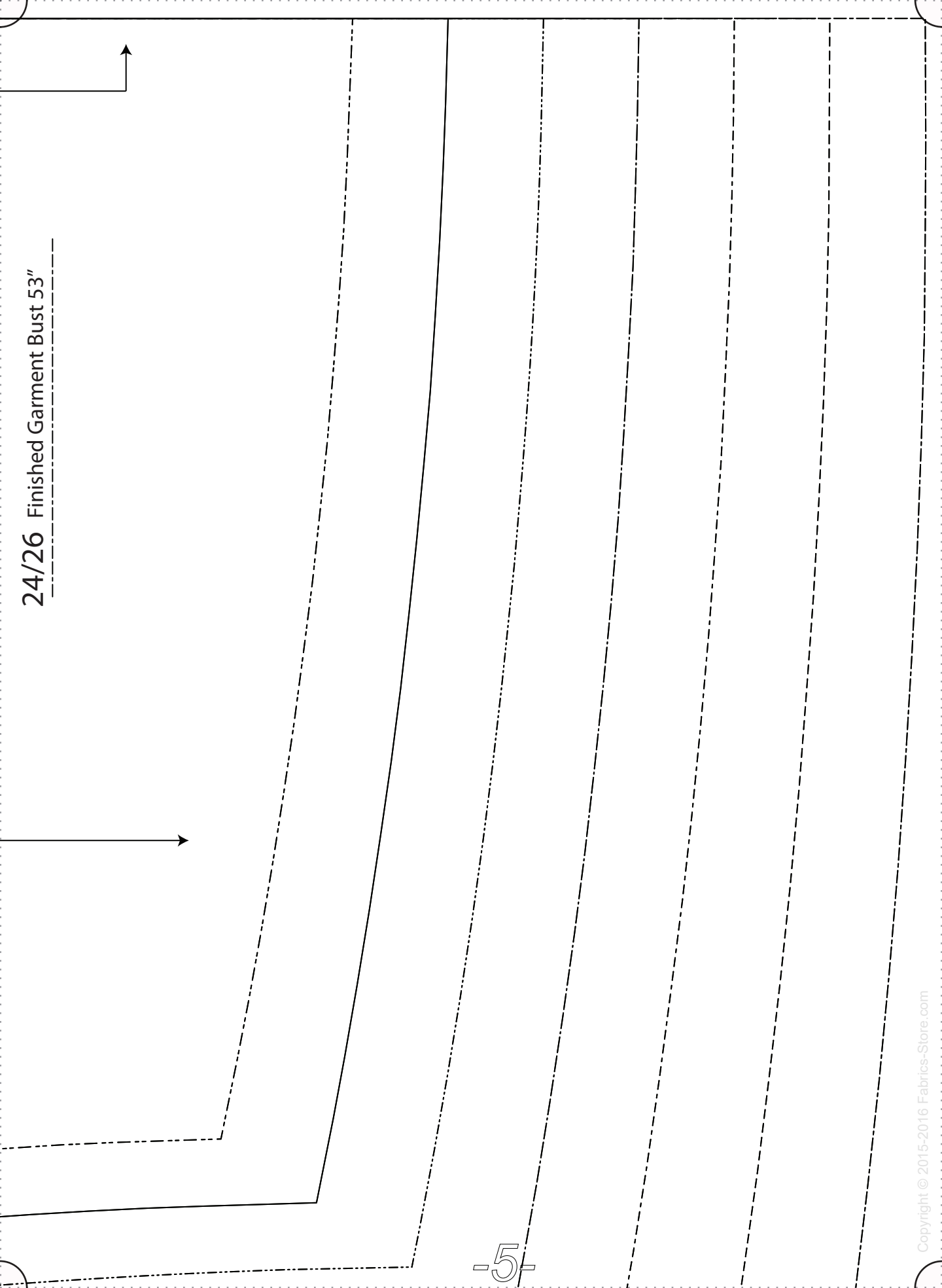
16/18 Finished Garment Bust 44"

20/22 Finished Garment Bust 48"

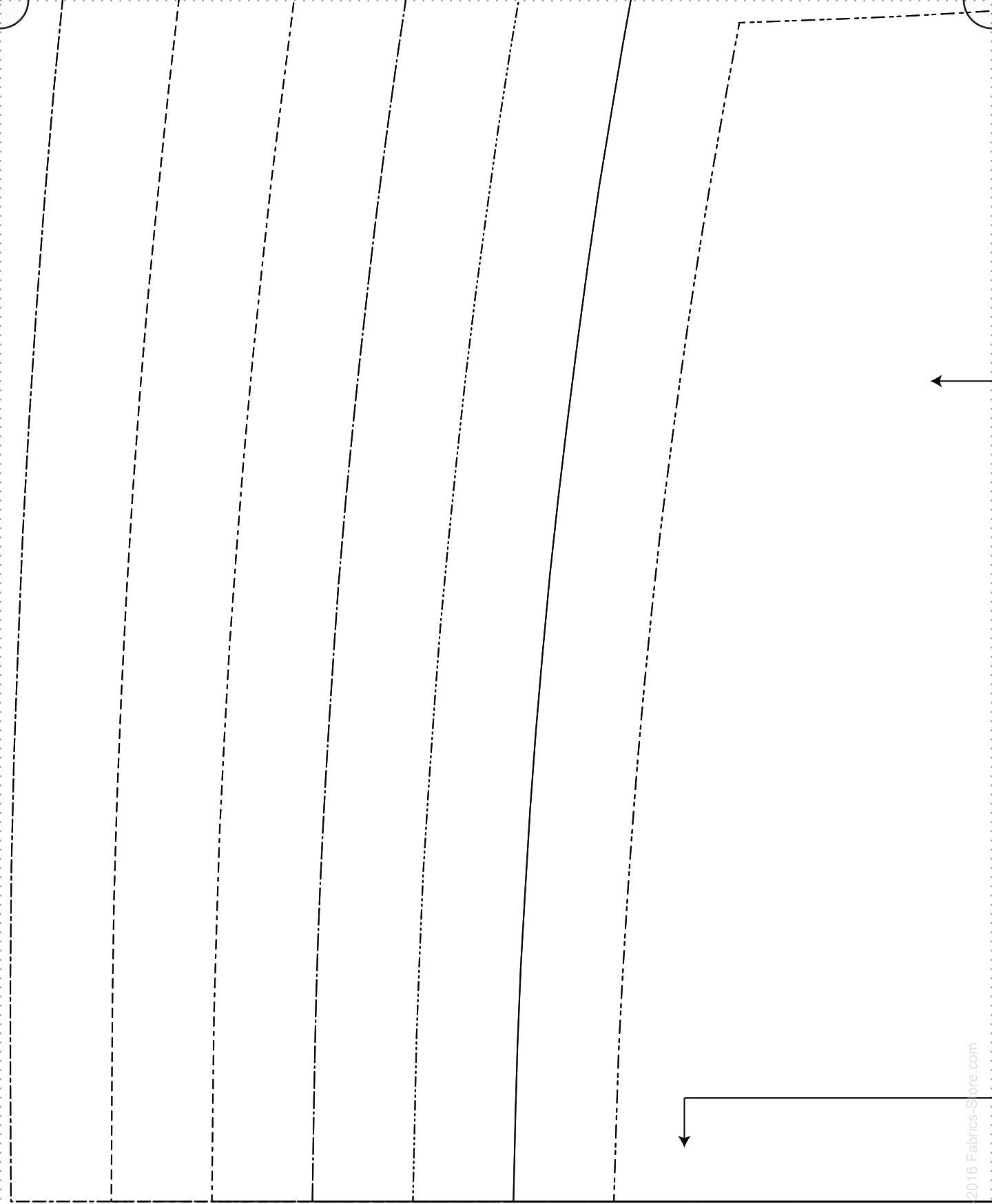
GRAINLINE

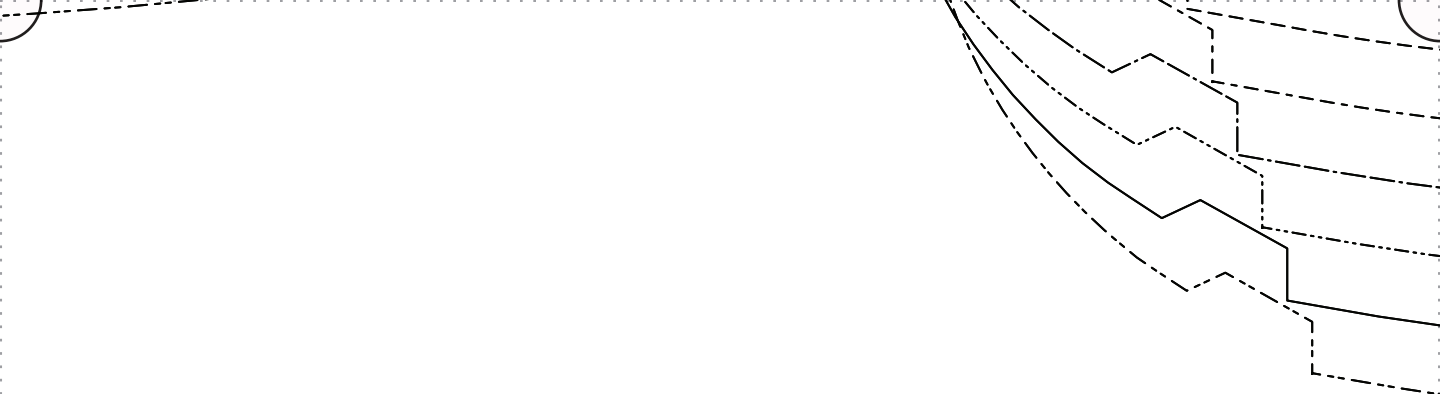


24/26 Finished Garment Bust 53"





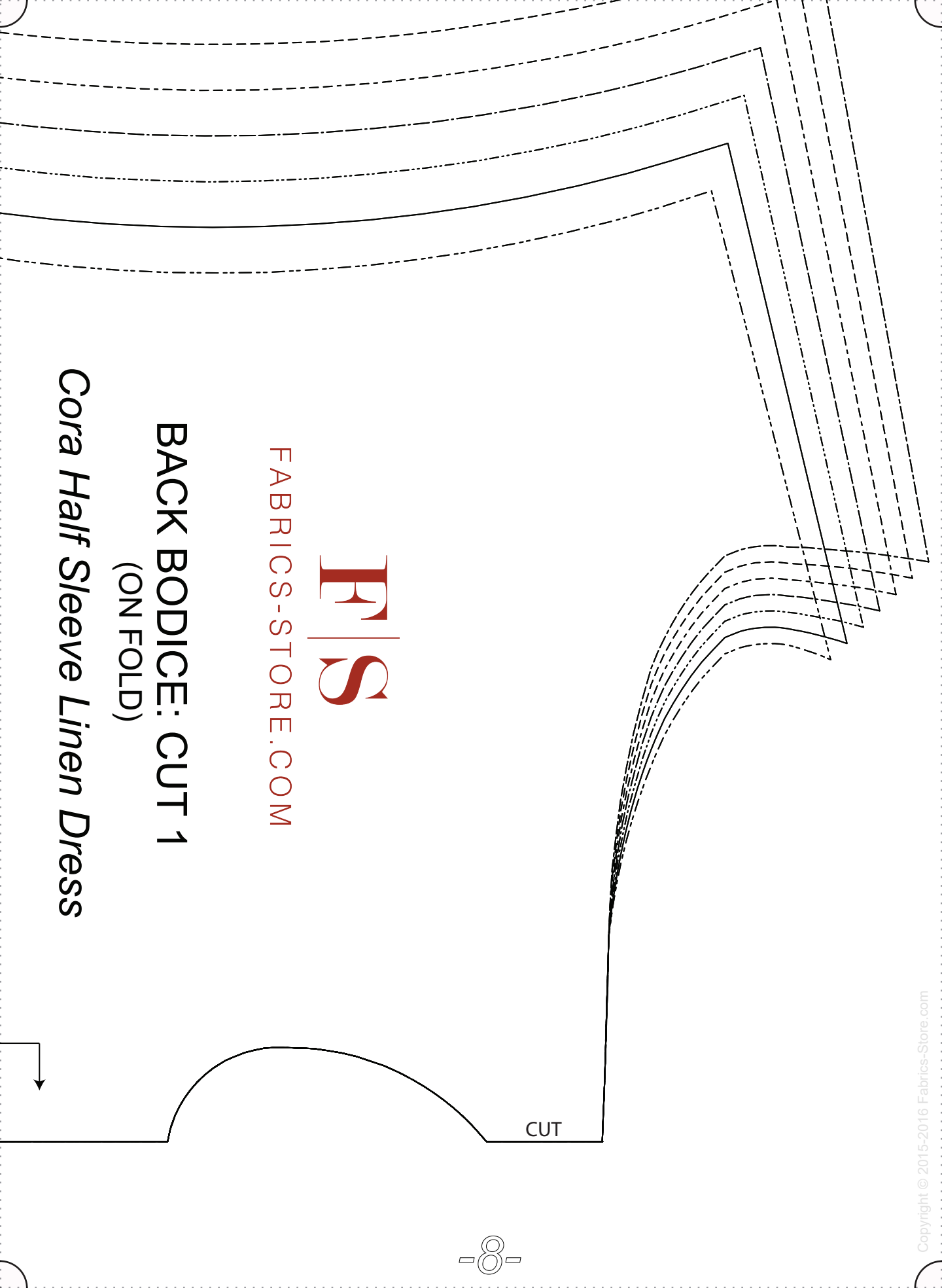




GRAINLINE

1/2"  
SEAM ALLOWANCES  
INCLUDED

CUT ON FOLD



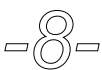
F|S

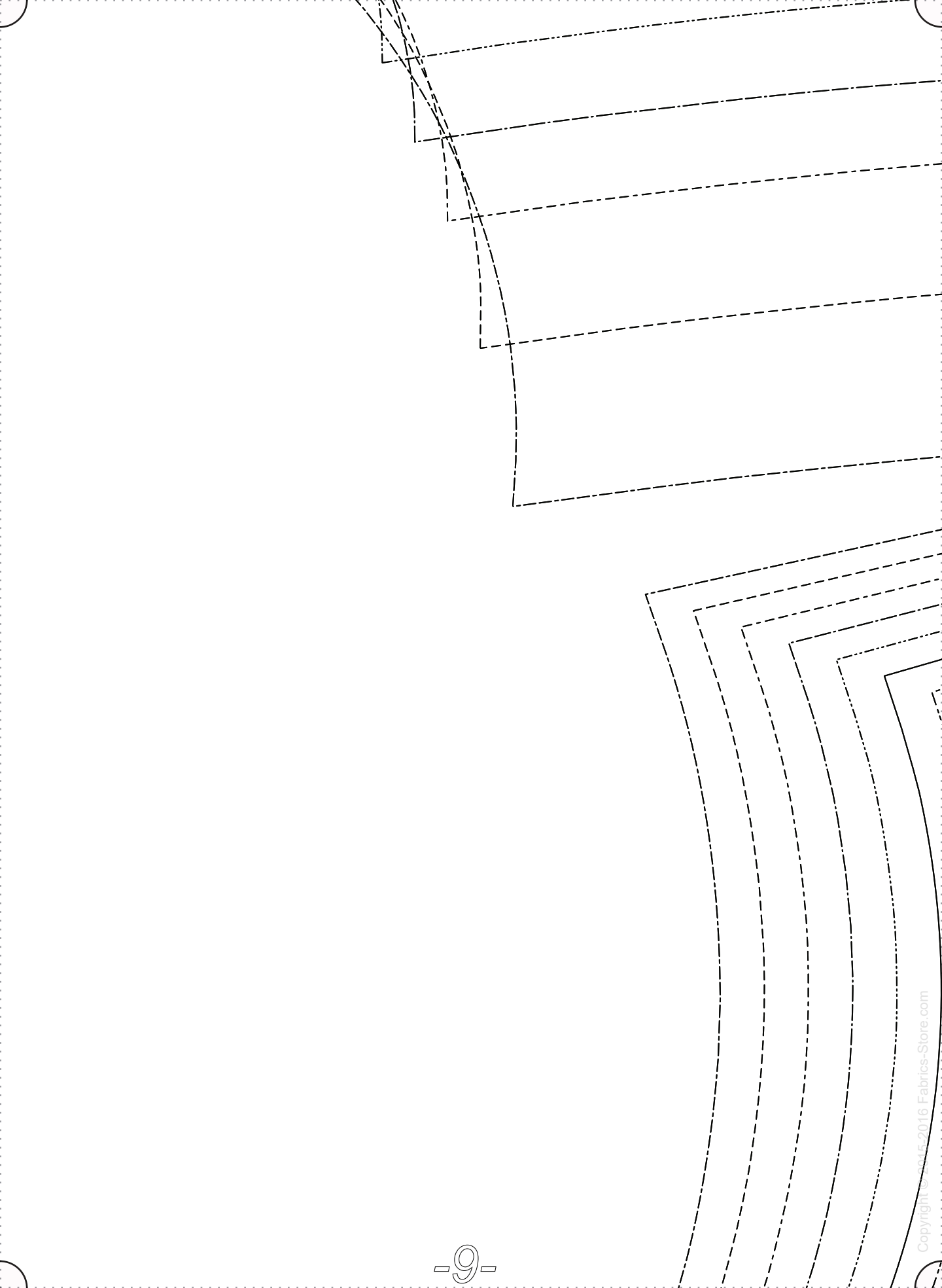
FABRICS-STORE.COM

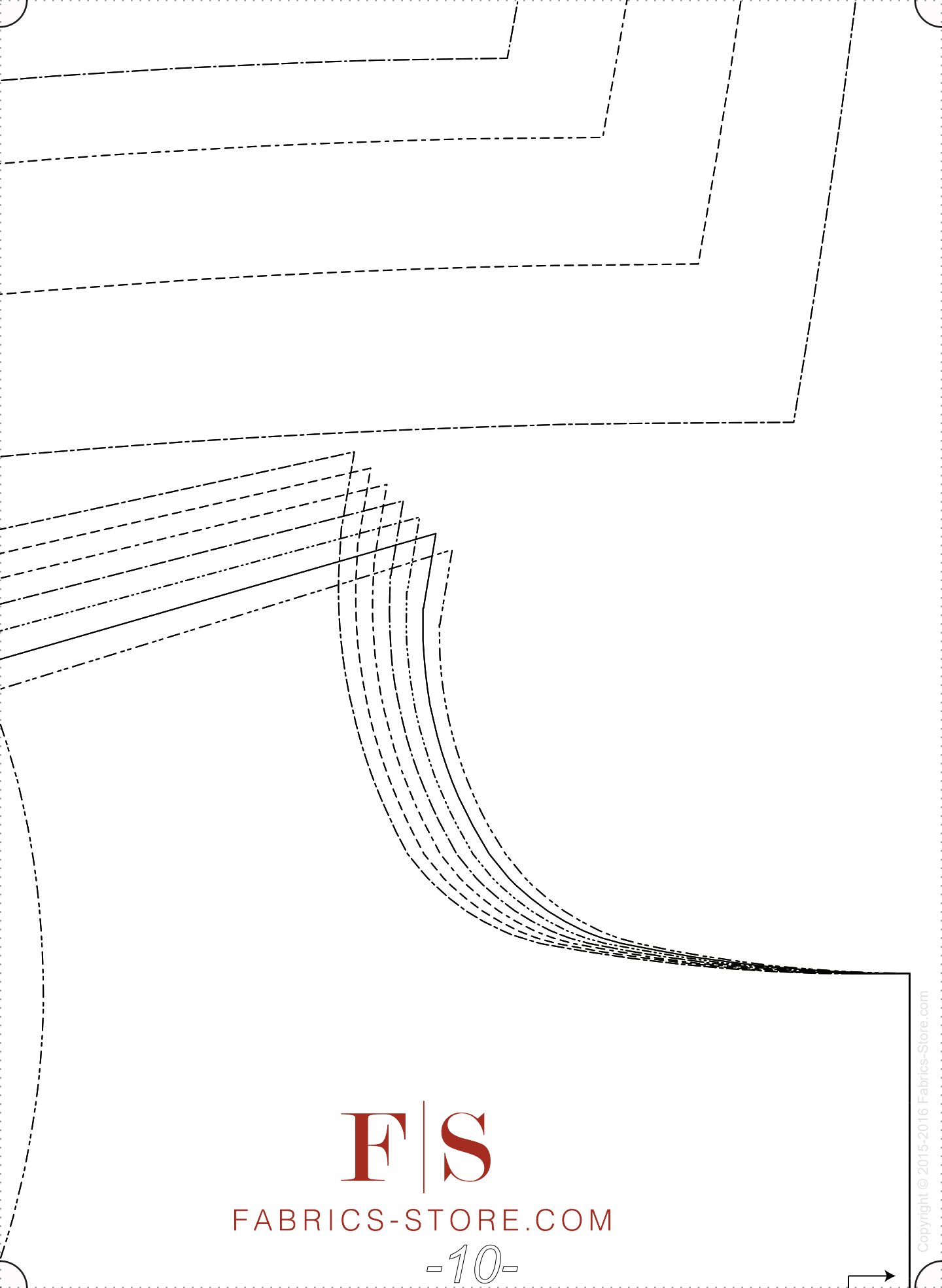
**BACK BODICE: CUT 1**  
(ON FOLD)

*Cora Half Sleeve Linen Dress*

CUT



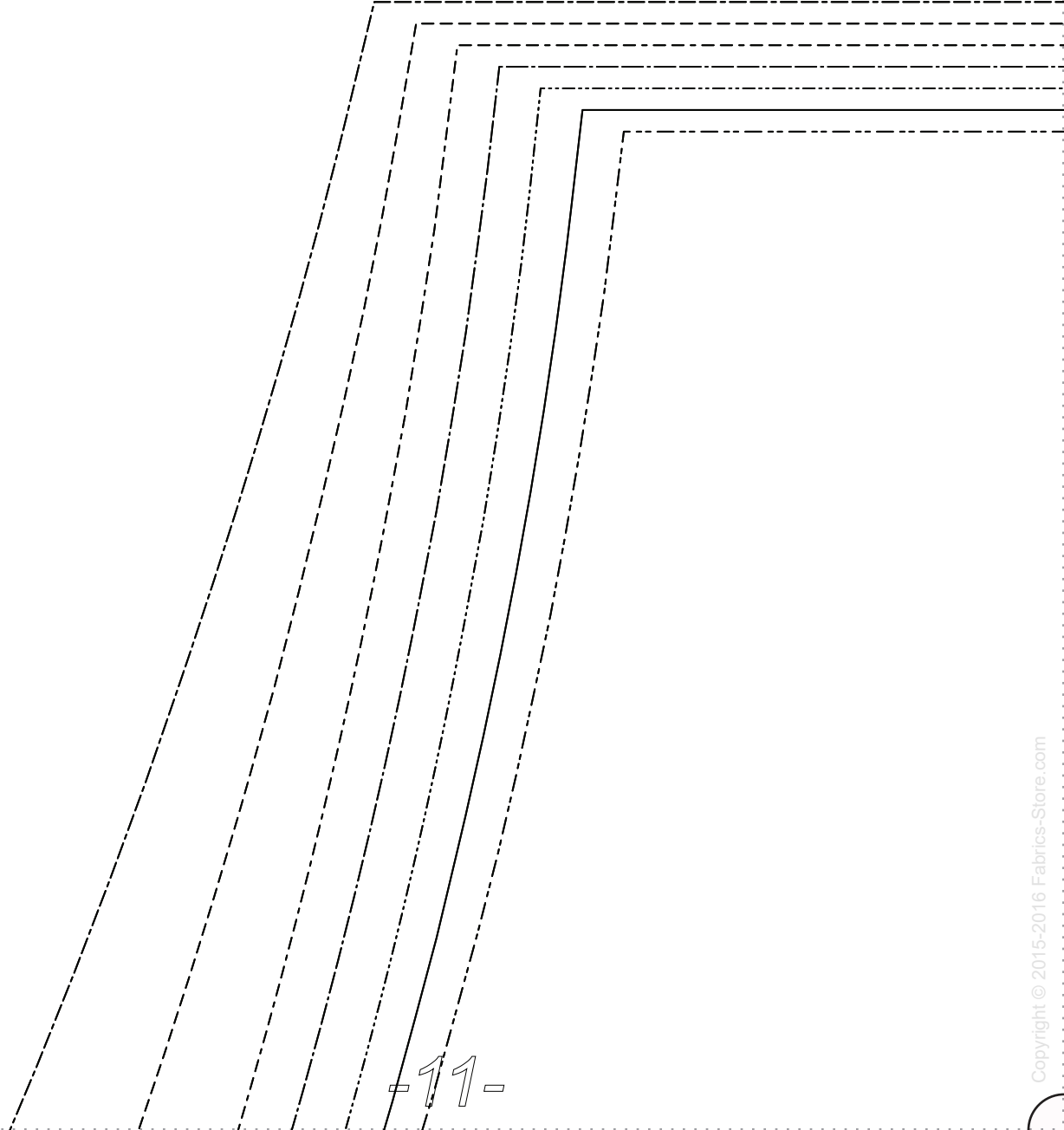


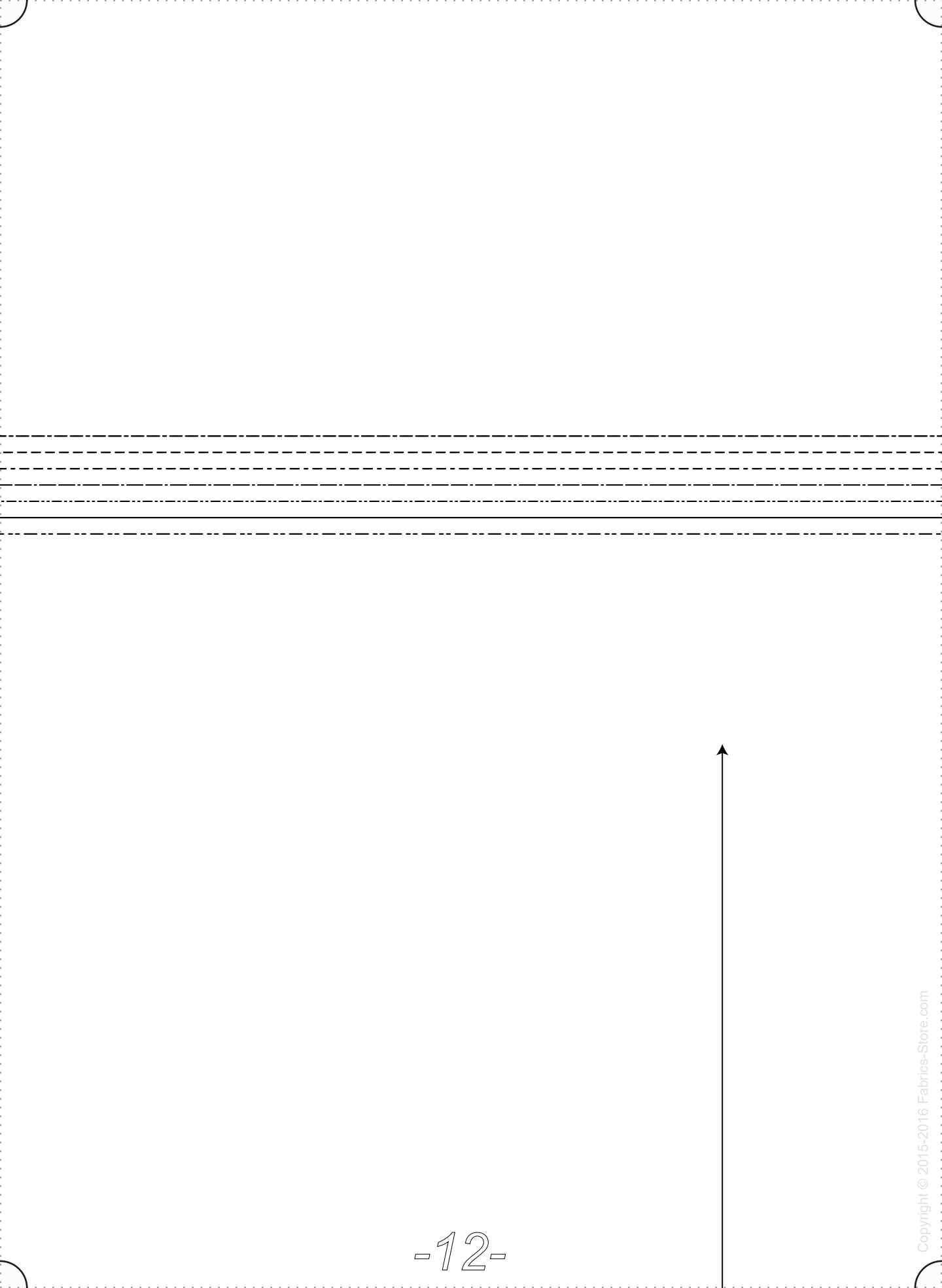


**F|S**

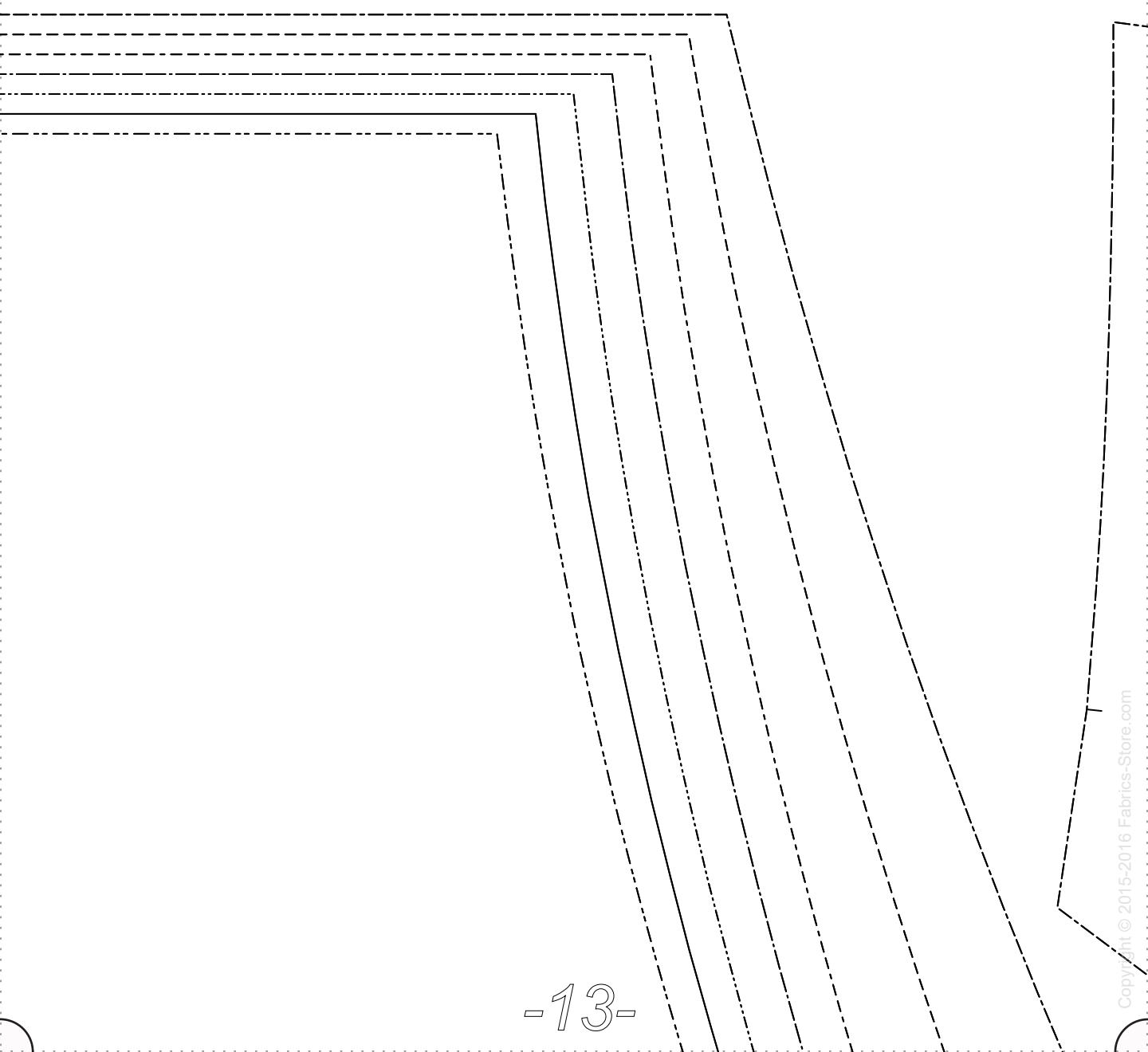
FABRICS-STORE.COM

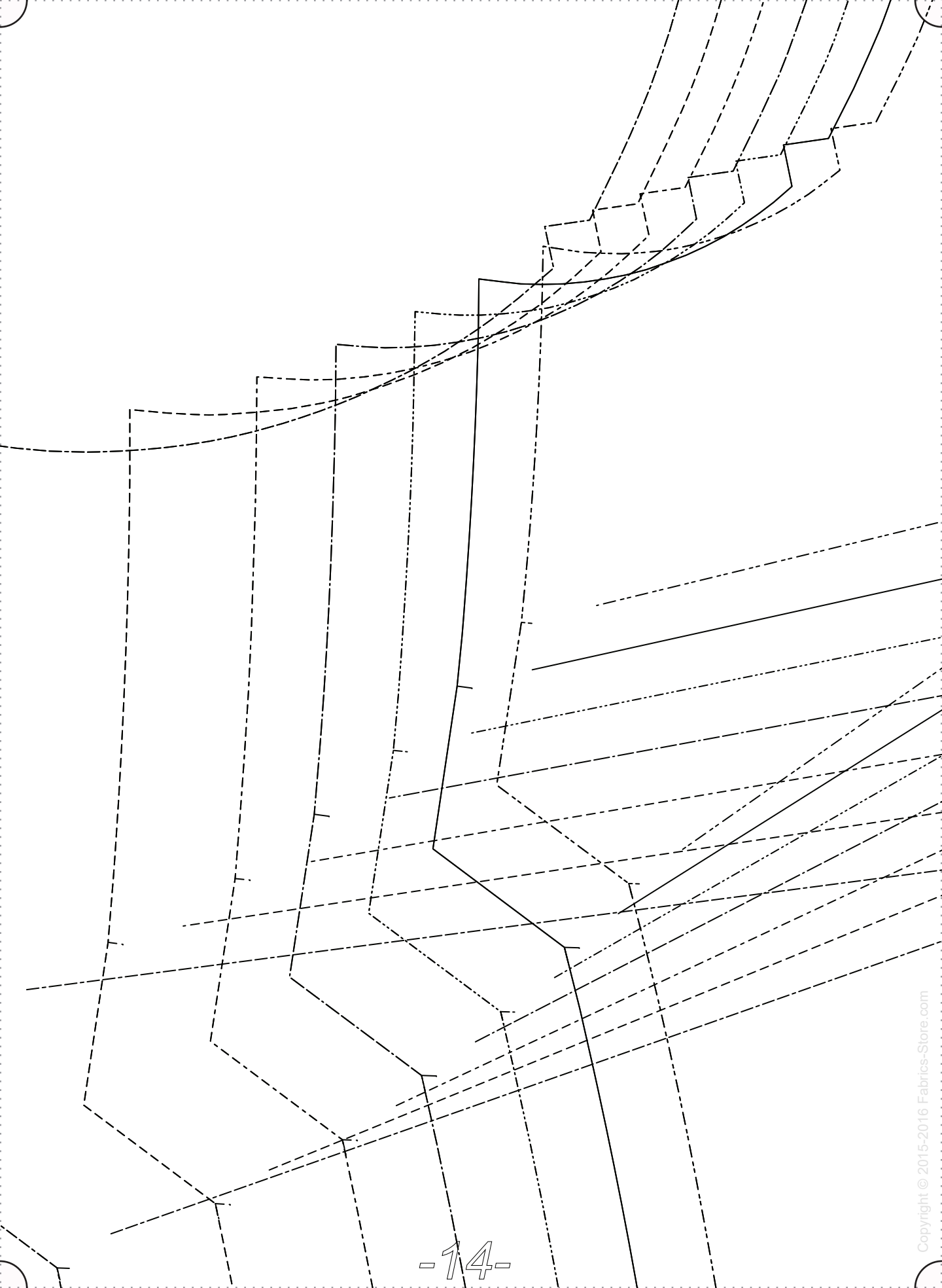
-10-











# DARTED FRONT BODICE: CUT 1 (ON FOLD)

## *Cora Half Sleeve Linen Dress*

1/2"  
SEAM ALLOWANCES  
INCLUDED

GRAINLINE

CUT ON FOLD

0/2 Finished Garment Bust 34"

4/6 Finished Garment Bust 36"

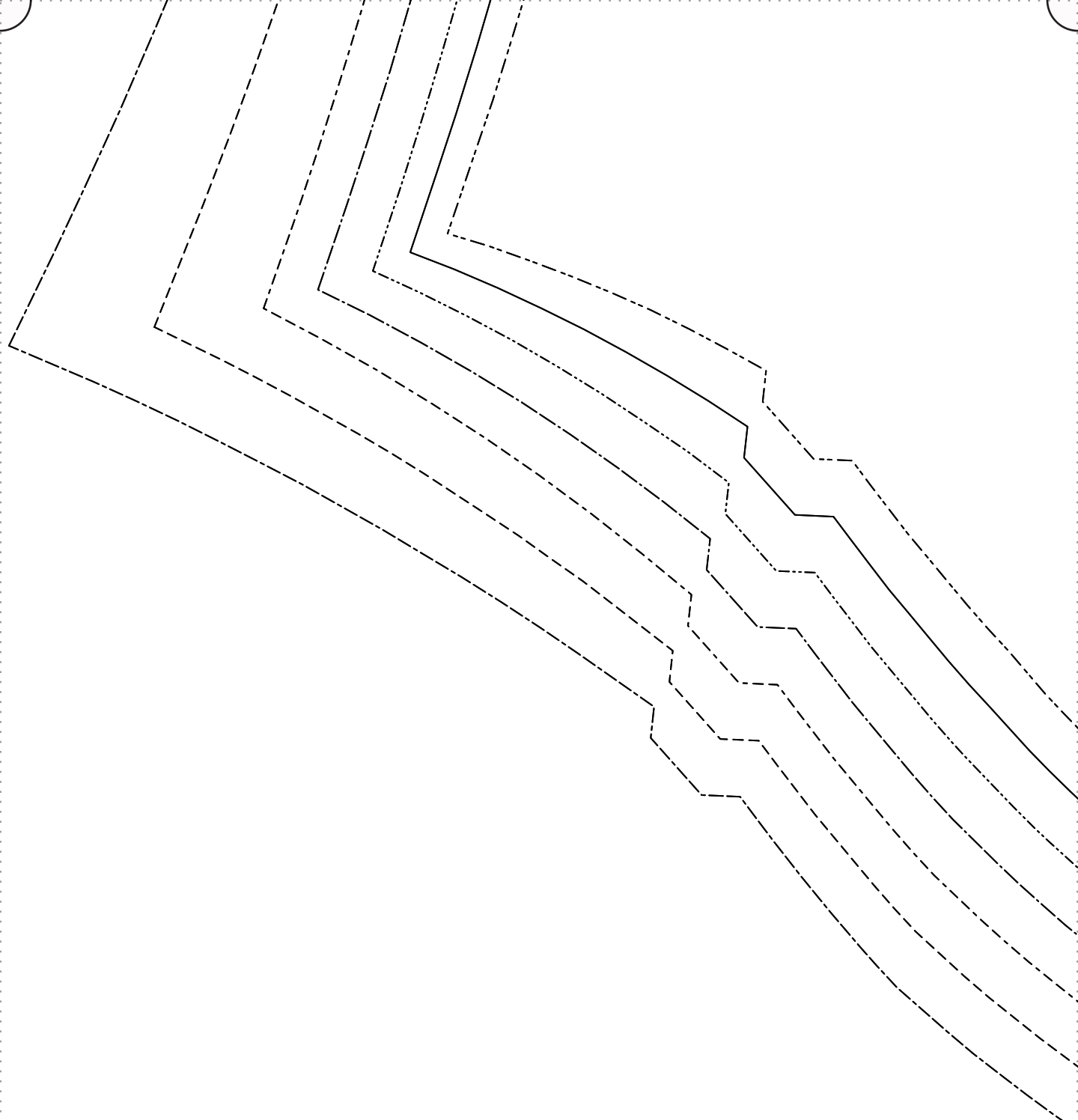
8/10 Finished Garment Bust 38"

12/14 Finished Garment Bust 41"

16/18 Finished Garment Bust 44"

20/22 Finished Garment Bust 48"

24/26 Finished Garment Bust 53"



GRAINLINE

*Cora Half Sleeve Linen Dress*

(FACE TO FACE)

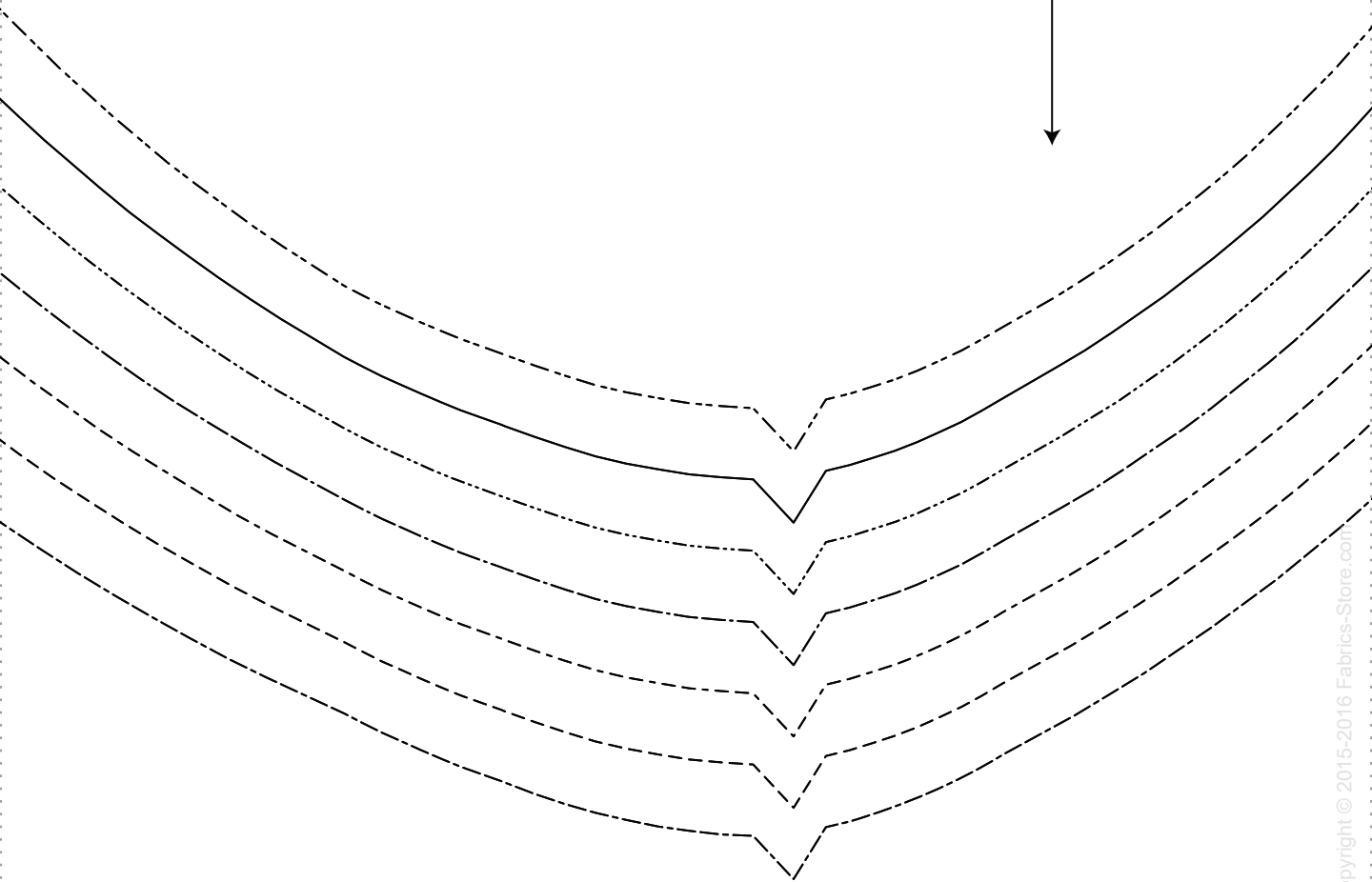
SLEEVE: CUT 2

FABRICS-STORE.COM

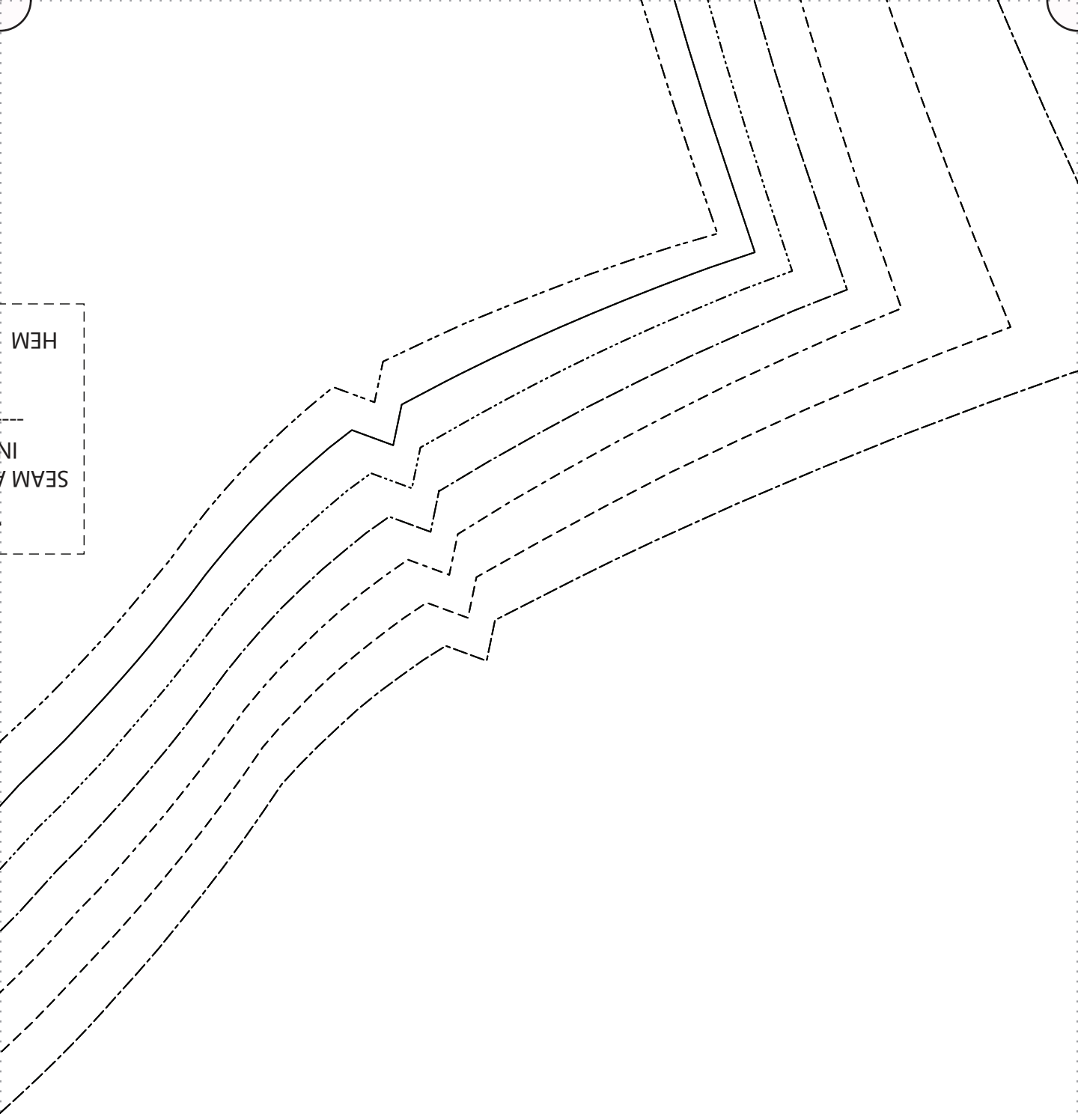
F|S

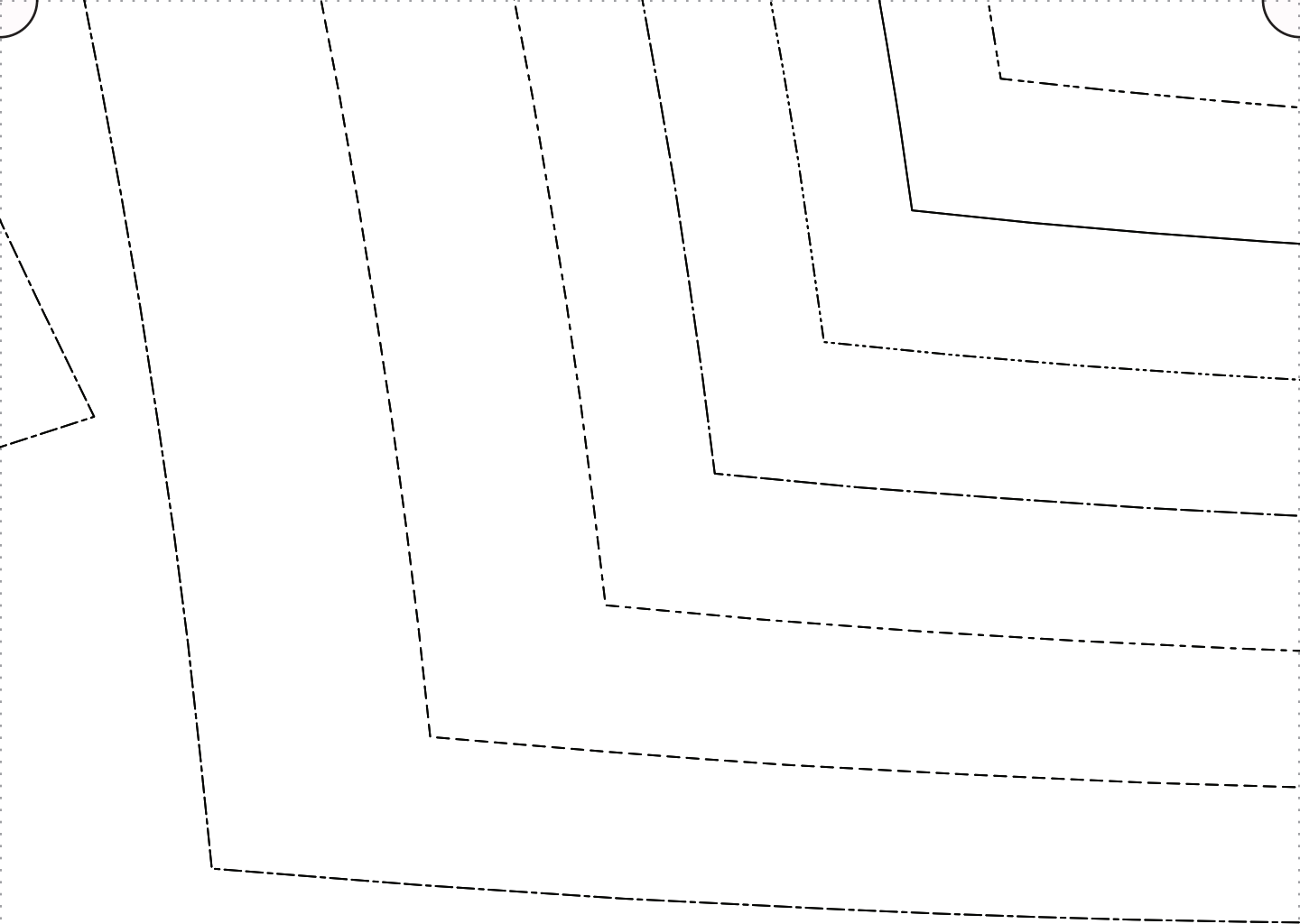
ALLOWANCES INCLUDED  
1/2"

1" ALLOWANCE

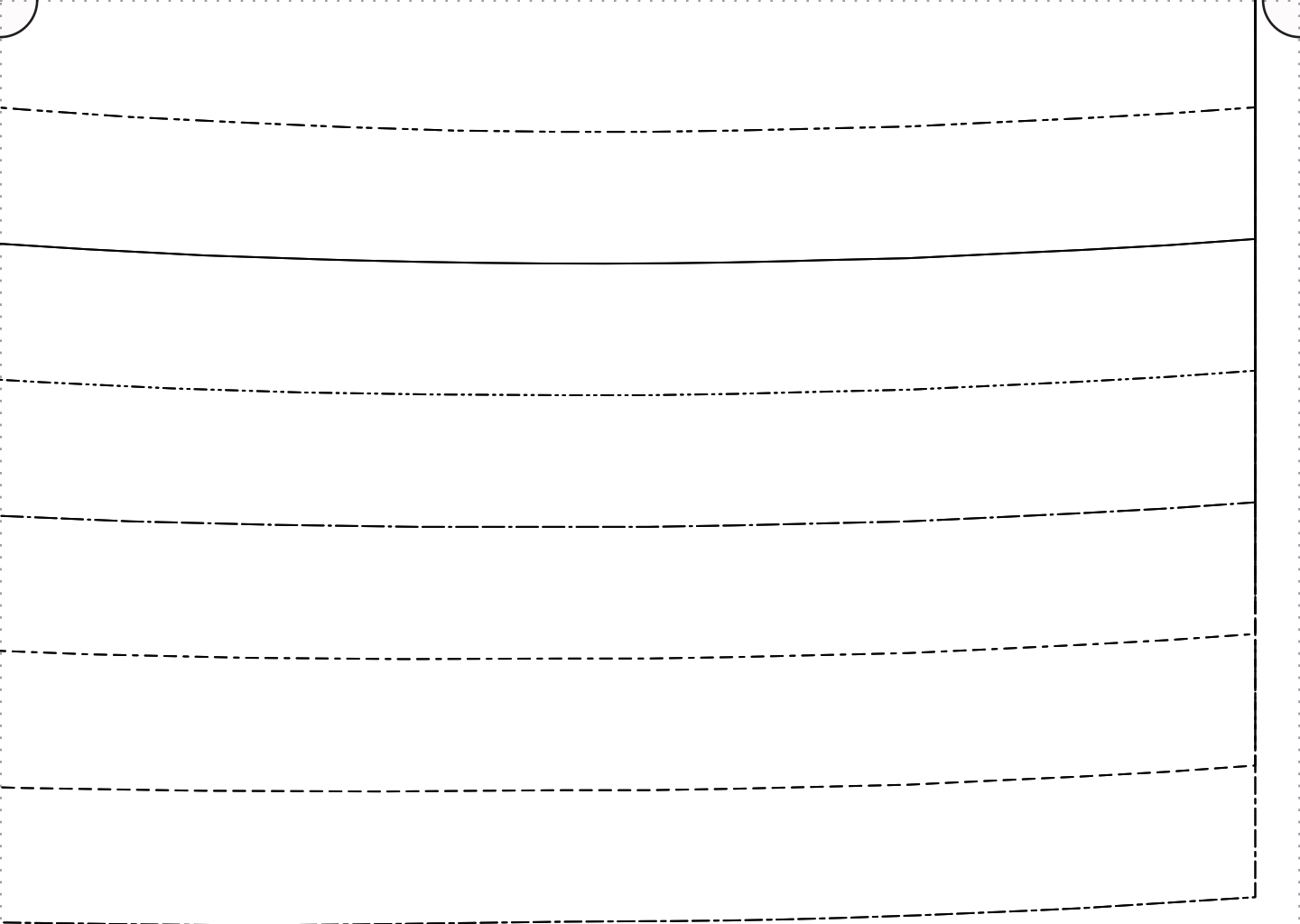


HEM  
SEAM /  
IN



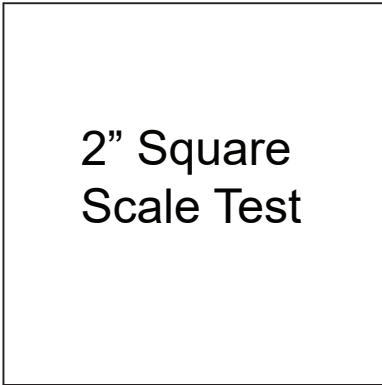






## Pattern (Part 2) for our "Half Sleeve Linen Dress" Tutorial

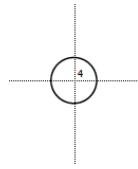
For instructions visit: [blog.fabrics-store.com](http://blog.fabrics-store.com) and enter "Cora Half Sleeve Pattern" in the search box



2" Square  
Scale Test

**PRINT ONLY THIS PAGE FIRST TO CHECK SCALE**  
**IMPORTANT! PRINT AT ACTUAL SIZE, 100%, OR NO SCALING**

*Formatted for paper sizes A4 and Letter.*



Simply overlap the page margins and align the markings in each corner to complete the circle and tape in place.

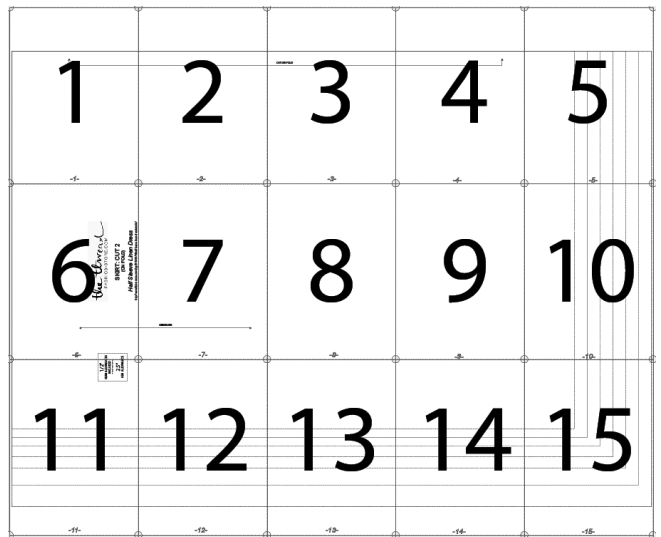
Sizes: 0/2 to 24/26  
Optional Front Bust Darts

*Please choose size based on desired finished garment bust measurement.*

0/2	4/6	8/10	12/14	16/18	20/22	24/26
34"	36"	38"	41"	44"	48"	53"

### Layered PDF:

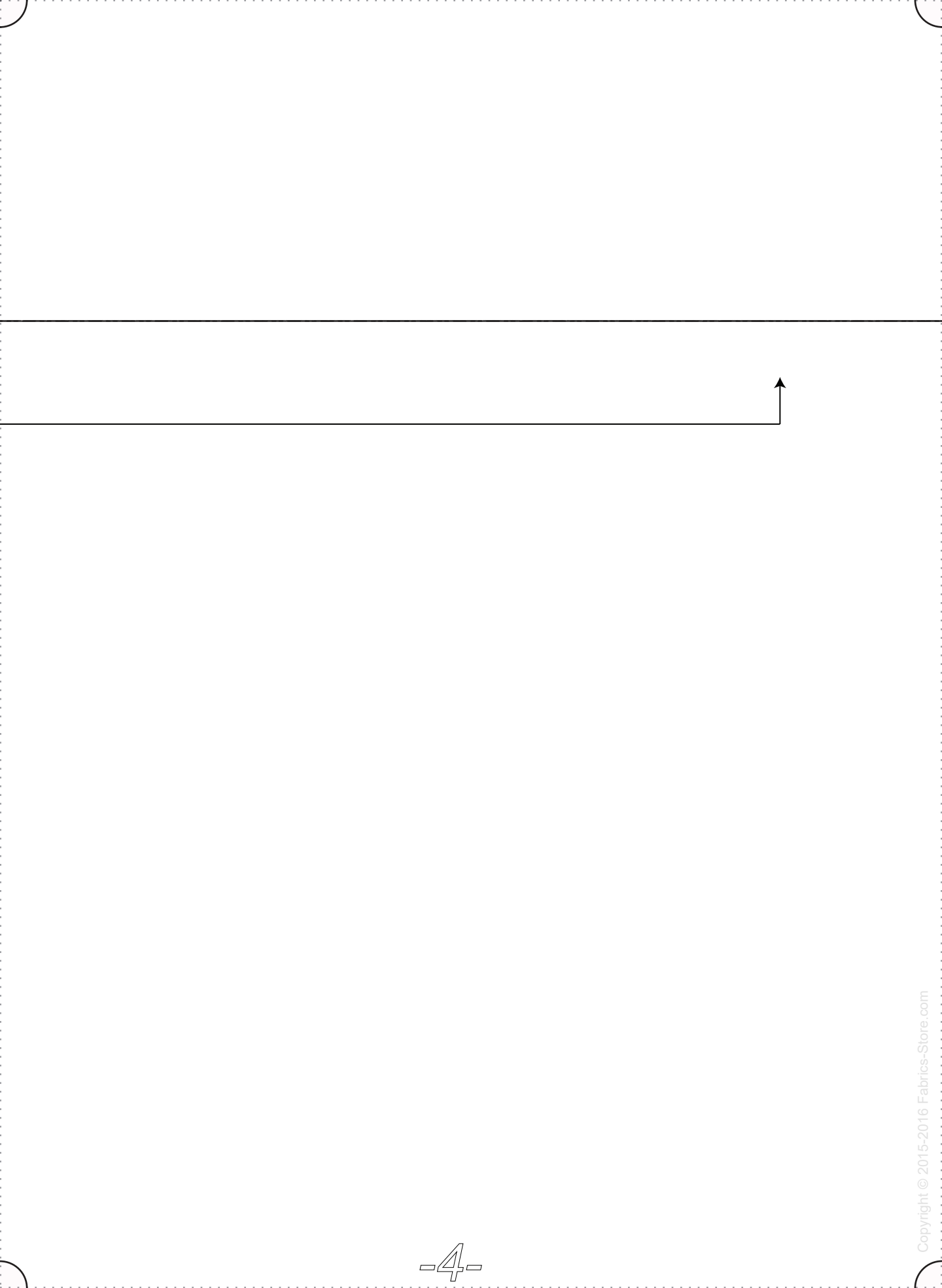
This pattern has embedded layers so you can print all sizes or a single size. See you .pdf viewers 'Layers' menu.







CUT ON FOLD







F|S

FABRICS-STORE.COM

SKIRT: CUT 2

(ON FOLD)

*Cora Half Sleeve Linen Dress*

1/2"  
SEAM ALLOWANCES  
INCLUDED

---

2.5"  
HEM ALLOWANCE

GRAINLINE









Handwriting practice lines consisting of four sets of horizontal lines. Each set includes a solid top line, a dashed middle line, and a solid bottom line.







