

F|S

FABRICS-STORE.COM

*Our linen is nothing short of addicting*

# CLOE JUMPSUIT



## LINEN GETS PLAYFUL

*This linen jumpsuit has a casual yet polished look. Added details like flirty ties at the sleeve hems and a self waist tie give it a fun personality.*

Misses and Women Sizes Included

866.620.2008 ASK@FABRICS-STORE.COM FABRICS-STORE.COM

---

# CLOE PATTERN

---

*Cloe is a semi-tailored capri length jumpsuit with front princess seams in the bodice, a fitted waist with self belt tie, and gathered sleeves ruched at the hem with little ties. Back zipper closure.*

*Sized for ladies 0/2 to 28/30*

*Simple instructions for the intermediate sewist.*

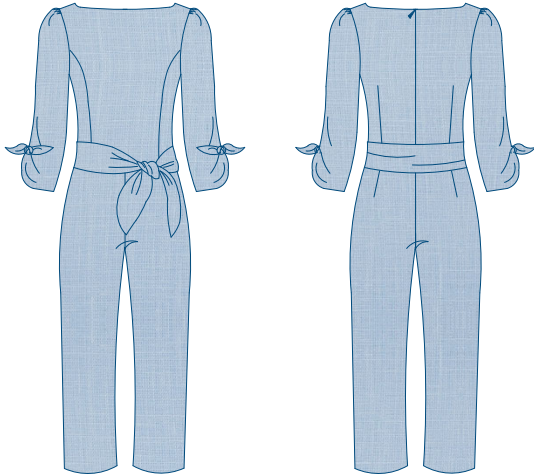
---

PICTURED: LAURA WEARING IL020 3.5oz LINEN IN HEATHER.



Our lovely model Laura is 5'10" and wearing size 4/6 of this pattern with the following adjustments: Bodice lengthened 1.25", Crotch rise lengthened 2".

# PATTERN DETAILS



## CLOE JUMPSUIT

Sizes: 0/2 to 28/30

- Wide, high neckline
- 3/4 sleeves with gathers at shoulder
- Sleeve hem draws up with ties
- Front bodice princess seams
- Straight leg pant, capri length
- Wide waist tie belt
- Back zipper closure
- Back waist darts

### FABRICS & SUPPLIES

**Fabrics:** Main fabric: light or medium weight linen. We sampled Cloe in our IL020 a lighter weight of 3.5 ounces this 100% linen is woven with finer threads to give it a smoother appearance.

**Notions:** Zipper: 24" regular or invisible zipper. Hook & eye for top of zipper.

To shop our IL020 colors visit [Fabrics-Store.com](http://Fabrics-Store.com)

### SIZING & YARDAGE

Misses/Women's Size Guide Based on Body Measurements in Inches

Size	0/2	4/6	8/10	12/14	16/18	20/22	24/26	28/30
Bust	33-34	35-36	37-38	39-40	42-44	46-48	50-52	54-56
Waist	25-26	27-28	29-30	31-32	34-36	38-40	42-44	46-48
Hip	35-36	37-38	39-40	41-42	44-46	48-50	52-54	56-58

Finished Garment Measurements - Approximate in Inches

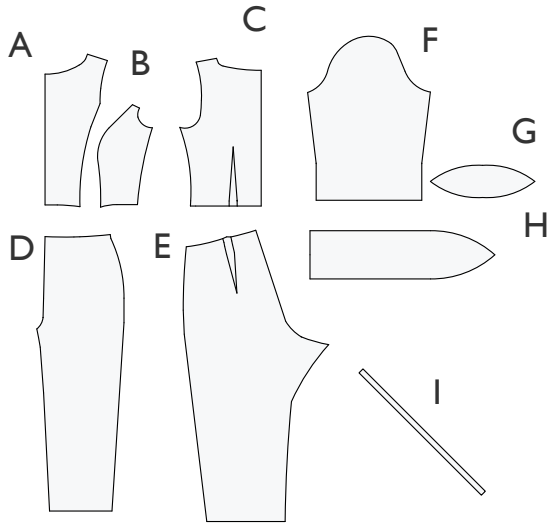
Size	0/2	4/6	8/10	12/14	16/18	20/22	24/26	28/30
Bust	35	37	39	41	45	49	53	57
Waist (high)	26.5	28.5	30.5	32.5	36.5	40.5	44.5	48.5
Hips	38	40	42	44	48	52	56	60
Pant Inseam	19.75	20	20.25	20.5	20.75	21	21.25	21.5
Sleeve Inseam	11.69	12	12.31	12.62	12.93	13.24	13.55	13.86

Estimated Yardage - 54" Width Linen - Up to 10% shrinkage has been included in the yardages

3 yards sizes 0 to 14 - 4 yards sizes 16 to 30

# PATTERN & CUTTING GUIDES

## PATTERN PIECE REFERENCE

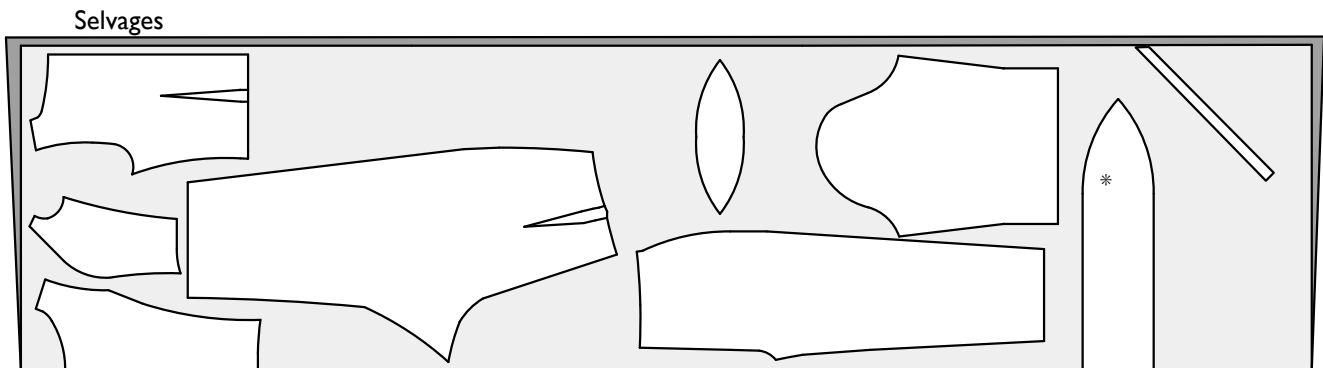


- A: FRONT BODICE -  
CUT 1 IN LINEN "ON FOLD"
- B: SIDE FRONT BODICE -  
CUT 2 IN LINEN "FACE TO FACE"
- C: BACK BODICE -  
CUT 2 IN LINEN "FACE TO FACE"
- D: FRONT PANT -  
CUT 2 IN LINEN "FACE TO FACE"
- E: BACK PANT-  
CUT 2 IN LINEN "FACE TO FACE"
- F: SLEEVE-  
CUT 2 IN LINEN "FACE TO FACE"
- G: SLEEVE TIE-  
CUT 2 IN LINEN
- H: BELT-  
CUT 1 IN LINEN
- I: BIAS STRIP-  
CUT 1 ON FOLD OR JOIN SMALLER PIECES.

## CUTTING LAYOUT EXAMPLE

RIGHT SIDE OF PATTERN	BACK SIDE OF PATTERN	RIGHT SIDE OF FABRIC	WRONG SIDE OF FABRIC

LAYOUT EXAMPLE IS SIZE 4/6



\* Please note that for larger sizes the belt can be cut crossgrain and/or cut in two parts and joined with a center back seam.

---

## SEWING & PREPARATION TIPS:

Sewing with quality linen from Fabrics-Store is very enjoyable! Linen is a stable fabric that does not easily shift or slip, which is a very helpful characteristic for sewing a neat and even seam with little effort. You do not need to “push” or “pull” the fabric while sewing... just simply guide it.

*Pre-washing:* You will want to prewash and dry your linen fabric in the same manner you would your finished garment. This will soften your fabric, and eliminate further shrinkage in your final garment.

If you plan on only dry cleaning your final garment, likewise you will want to dry clean the fabric before cutting and sewing. Secure the raw edges with a zig-zag or serger stitch before washing to avoid fraying. You may also sew the two raw edges together to form a continuous piece to avoid twisting in the wash. Remove fabric from dryer while it is still slightly moist. Press any deep creases or wrinkles using your iron’s steam setting with high heat, using a protective press cloth if needed to avoid scorching.

*Fine Seaming:* To ensure that your seaming will last as long as your linen garment, we encourage “single-needle” tailoring and French seaming. Once you think of French seams as simply sewing the seam twice to encase the raw edges, you will see that it does not take that much more time than the second step of using a serger. Setting the stitch length on your sewing machine to 2mm (about 12-14 stitches per inch) makes for a very durable seam, and is also an attractive indication of fine tailoring.

*Alternate Seaming:* If you instead prefer to stitch your seams regularly and serge the raw edges, simply sew the seams with the full 5/8” allowance. You can then serge the raw edges, allowing the machine to trim 1/8” off the edges. This will result in seam allowances finishing at 1/2”.

*Pressing:* For best results, it is highly recommended that you press your seams as you finish sewing each of them. Pressing with a steam iron (and press cloth if needed) will help “set” the stitches into the fabric. You will find it is much easier to press your seams “as you go” instead of trying to press them all after the garment is finished.

*Sewing Glossary:* If certain sewing terms and techniques are new to you, please refer to the sewing glossary at the end of this document.

---

## SEWING INSTRUCTIONS:

1. *Main seam allowances are 5/8" unless indicated otherwise. French seams are intended for best results.* Sew the first seam 1/4" wrong sides together. Press the seam allowance neatly to one side. Turn with right sides together and sew the second seam at 3/8" to enclose the previous seam.
2. Sew front bust princess seams. Press the seam allowance towards the center front.
3. Sew the back bodice darts. Press bulk towards center back.
4. Staystitch the edges of the neckline 1/4" to prevent stretching.
5. Sew the shoulders and side seams of the bodice. Press the finished seam allowances towards the back.
6. Sew the buttonholes at the bottom of the sleeves where indicated. These are the openings for the ties.
7. Sew the sleeve inseams. Press the finished seam allowances towards the front.
8. Staystitch the seam allowance of the sleeve 1/2" from the raw edge to prevent stretching. Gather the cap of sleeve to match the armhole notches.
9. Sew the sleeve into the armhole with French seaming. Hem the bottom of the sleeve by turning under 3/8" twice and topstitching.
10. Bias strip(s). If your cutting layout did not permit cutting your bias in one piece, cut enough smaller pieces and join together with diagonal seaming as needed.
11. Sew the bias strip to the inside of the neckline to create a narrow, clean finished facing. Simply sew one edge of the bias to the neckline with 1/4" seam, right sides together. Press to the inside and understitch the bias facing. Fold under the other raw edge leaving about a 3/8" wide facing. Trim any excess if needed. Topstitch the facing in place.
12. Sew the side seams and inseams of the pants. Sew the front and back crotch, stopping at the zipper opening. Hem pant bottom: Turn under 1/2" and press. Turn again 3/4", press and topstitch.
13. Sew the pant waist to the bodice waist. To finish the raw edges of the zipper opening, serge, or use a narrow bias binding.
14. Sew zipper into center back seam.
15. Ties: Fold belt and sleeve tie pieces right sides together. Sew all around the edges leaving a 2" opening. Turn and neatly press. Close opening by hand or topstitch.
16. For the sleeve tie: simply put through the buttonhole and tie in a knot.

---

## Glossary:

**Basting Stitch:** A temporary hand or machine loose or long stitch to hold a seam in place before sewing the final permanent stitching.

**Bias grain:** In woven fabrics, this is the diagonal direction at 45 degrees to the grain and crossgrain. There are two bias directions in the cloth, perpendicular to each other.

**Buttonhole:** A slit in the fabric to fasten a button. The raw edges of the slit are finished with a machine or hand sewn zig-zag stitch.

**Ease stitch:** A row of stitching sewn just to the inside of a single layer of seam allowance. While stitching, coax the weave of the fabric with your finger or stylus to “compress” the fabric together. This creates a “gathering” effect without puckers. If desired, a second row of stitching can be done for more ease.

**Edge stitch:** A row of top stitching very close to a seamed edge or folded edge, usually about 1/16th of an inch.

**Fabric- right side:** The side of the fabric which will be the exposed, outside part of a garment.

**Fabric- wrong side:** The inside of the fabric which will be the unexposed side or inside of a garment.

**French seam:** A seam sewn in two steps to encase the raw edges of the fabric within itself, giving a clean finish. 1- Wrong sides together, sew 1/4” seam. 2- Turn right sides together, stitch 3/8” seam. Total 5/8” seam allowance.

**Grainline- cross grain:** The direction of fabric going from selvage edge to selvage edge. In woven fabric, these would also be known as the weft threads of the weave.

**Grainline- on grain:** The direction of fabric running parallel to the selvage edge of the cloth. This is also referred to as the “lengthwise grain”. In woven fabric, these would also be known as the “warp” threads of the weave.

**Notch- outward:** Markings on the pattern that indicate an outward triangular cut outside the seam allowance. Notch markings will be arranged to show where two seam edges join properly together. A single wedge will often indicate a front piece, and 2 to 3 wedges together can indicate back pieces.

**Notch- snip:** Markings on the pattern that indicate a small “snip” into the seam allowance. Notch marking will be arranged to show where two seam edges join properly together. A single notch will often indicate a front piece, and 2 to 3 notches together can indicate back pieces.



---

## Glossary (continued):

*Overlock machine:* A specialized sewing machine designed to sew and cut along the raw edge of a fabric seam with a networked stitch to secure the edges from fraying. Also known as a "serger".

*Press cloth:* A piece of cloth used to lay over a garment to protect it while ironing from burning or scorching. Usually made of cotton or linen or wool.

*Raw edge:* The cut edge of fabric. If not secured with stitching or a finishing, the raw edge of a fabric can fray or unravel.

*Seam allowance:* The distance from the cut edge of a pattern piece to the sewing line. Seam allowances can vary, so be sure to double check the indicated amounts on your pattern.

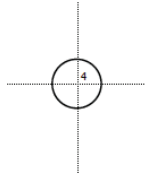
*Stay stitch:* A row of stitching on a single layer of the seam allowance edge to prevent stretching. You are neither pushing or pulling the fabric- just guiding. The row of stitching will be just to the inside of the permanent seam allowance width. For example, if the seam allowance is 5/8", your stay stitch will be 1/2" or a "scant" 5/8". You will want your permanent stitching to conceal the stay stitch.

*Understitch:* A row of stitching on a the seamed edge of facing. This prevents the facing from rolling out to the outside and keeps it neatly in place along the garment edge. The stitching will only go on the facing side, catching the seam allowance with it. The stitching will show on the facing, but not on the garment side.

2 Inch  
Square to  
Check Print  
Accuracy

**PRINT ONLY THIS PAGE FIRST TO CHECK SCALE**  
IMPORTANT! PRINT AT ACTUAL SIZE, 100%, OR NO SCALING

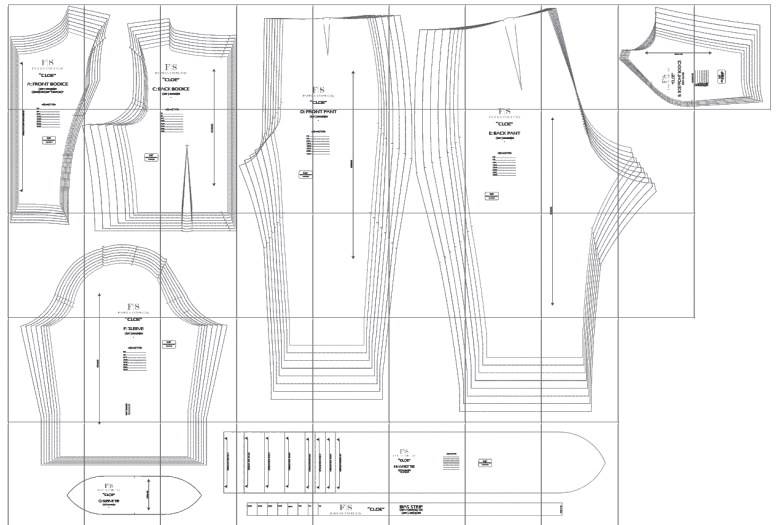
*Formatted for paper sizes A4 and Letter.*



Simply overlap the page margins and align the markings in each corner to complete the circle and tape in place.

### Layered PDF:

This pattern has embedded layers so you can print all sizes or a single size. See your .pdf viewers 'Layers' menu.





F|S

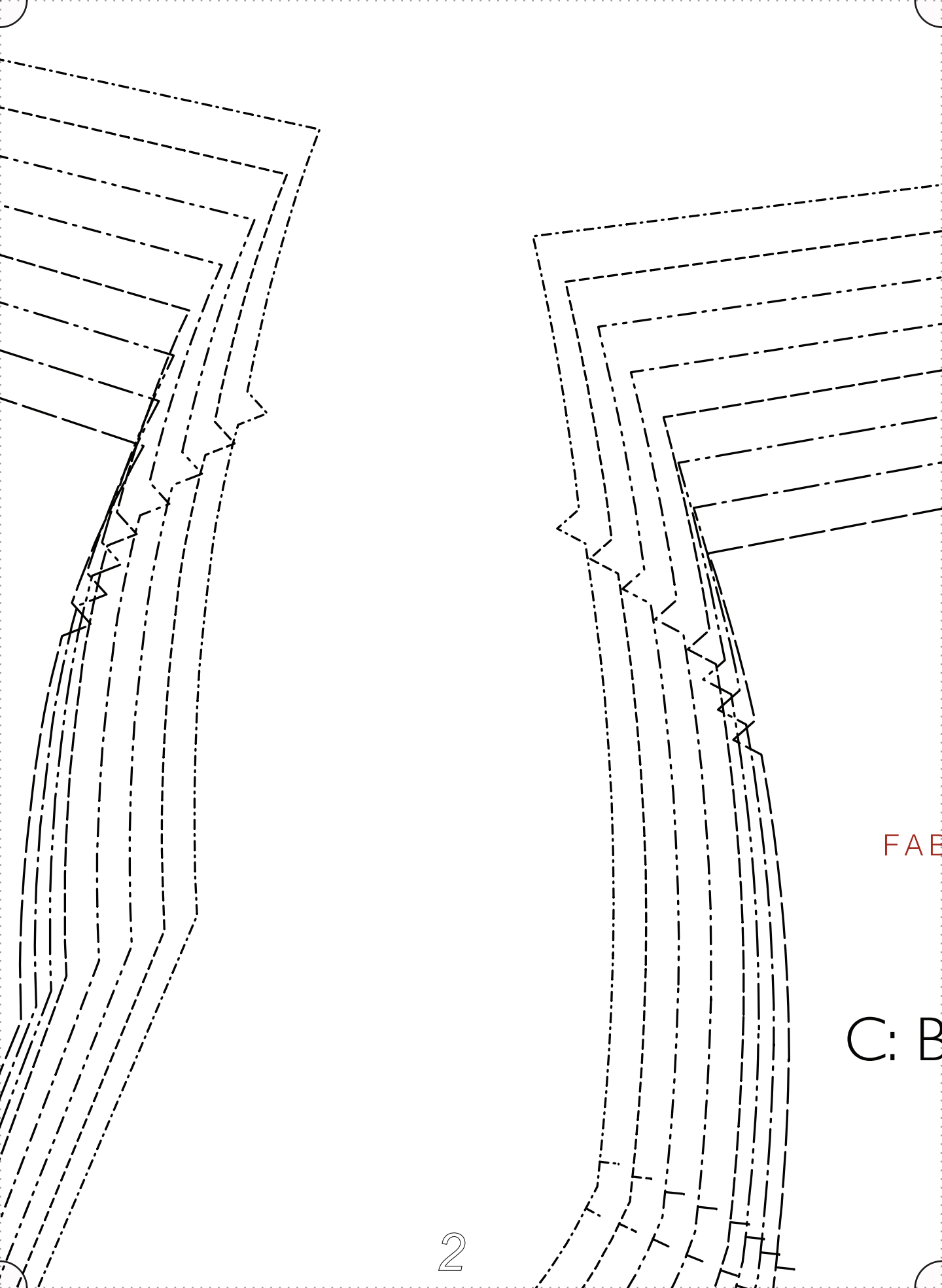
FABRICS-STORE.COM

“CLOE”

A: FRONT BODICE

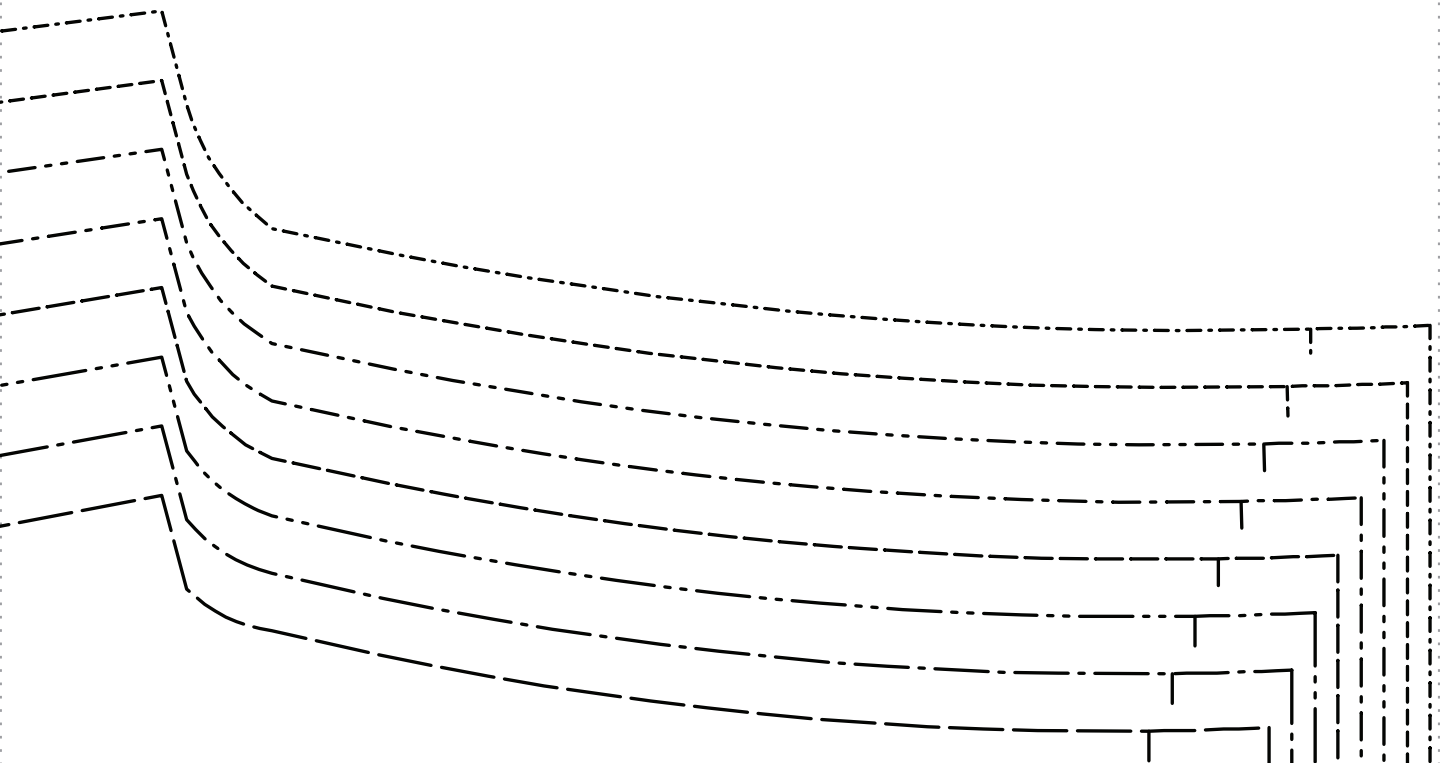
CUT 1 IN LINEN  
CENTER FRONT “ON FOLD”

SIZE 1 LINE TYPES



FAB

C: B



F|S

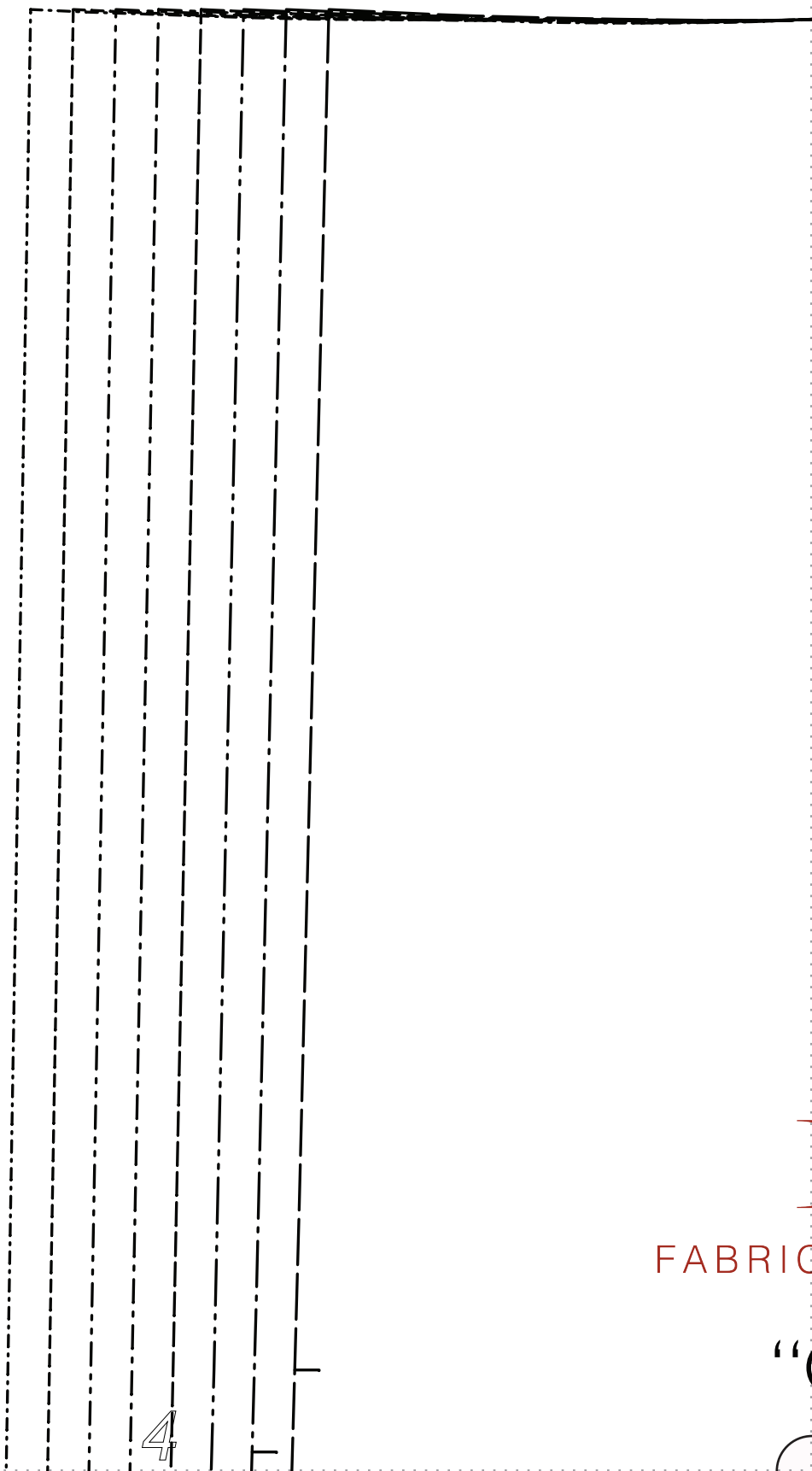
BRICS-STORE.COM

“CLOE”

BACK BODICE

CUT 2 IN LINEN





FABRIC

4

“

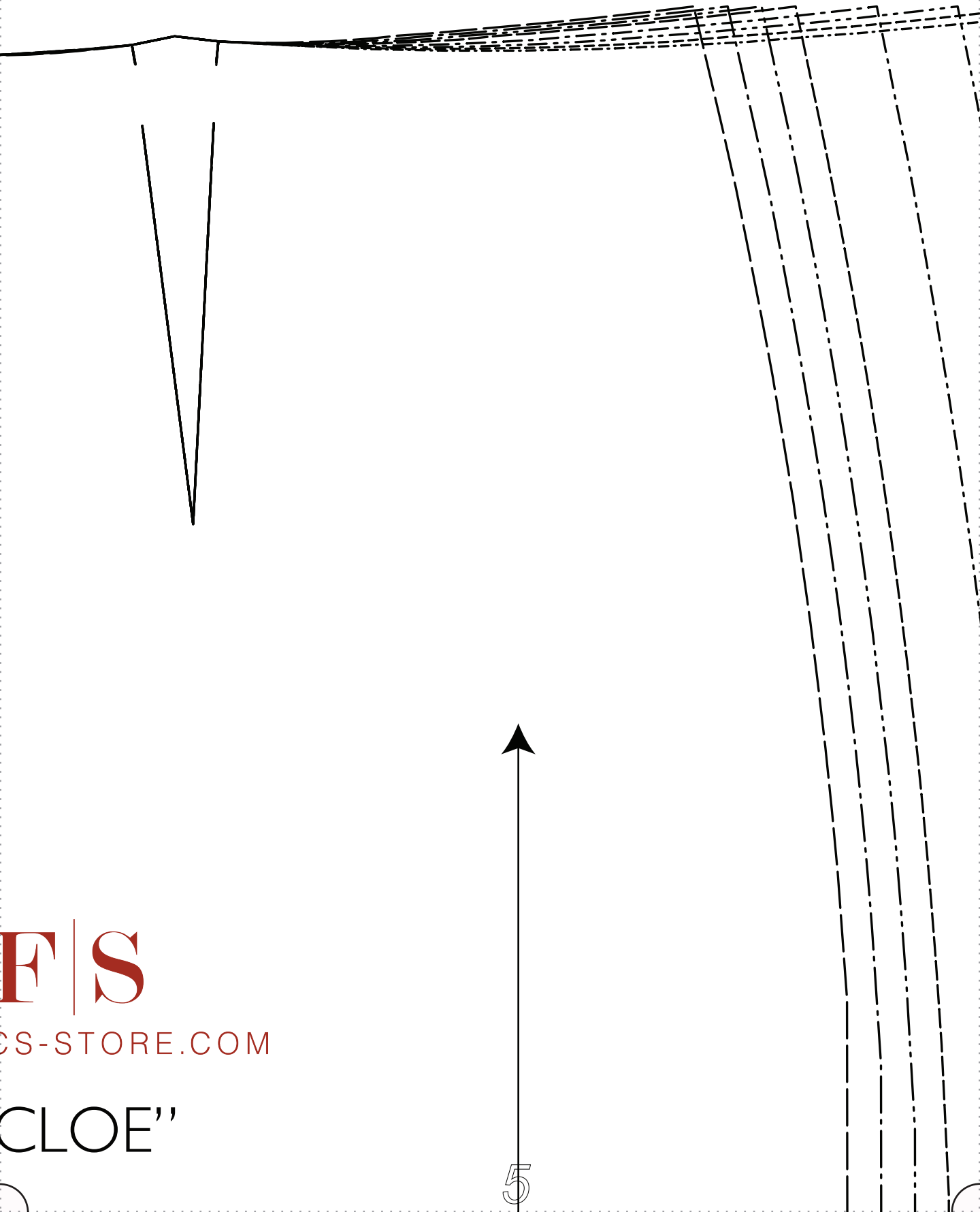
F|S

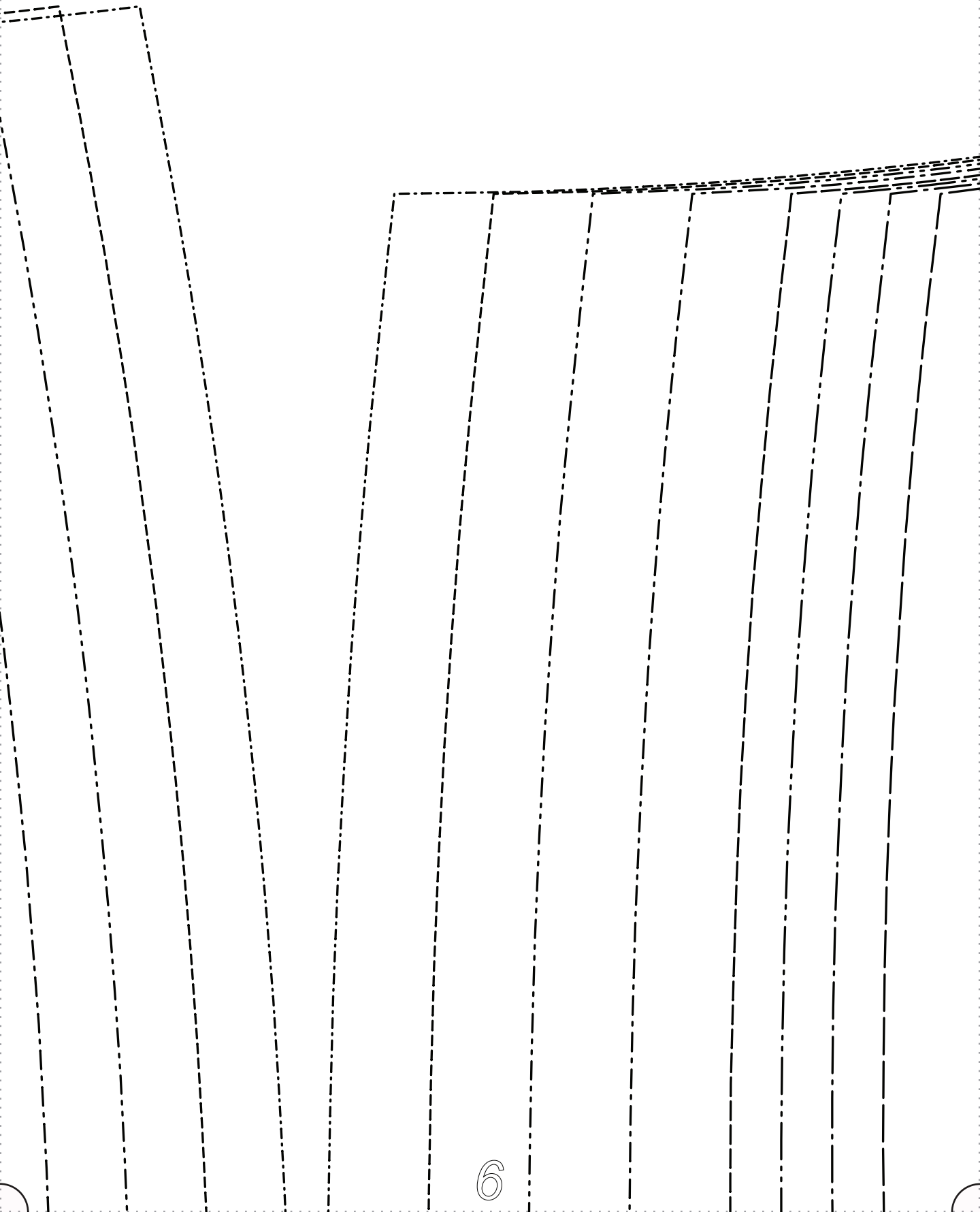
CS-STORE.COM

CLOE''



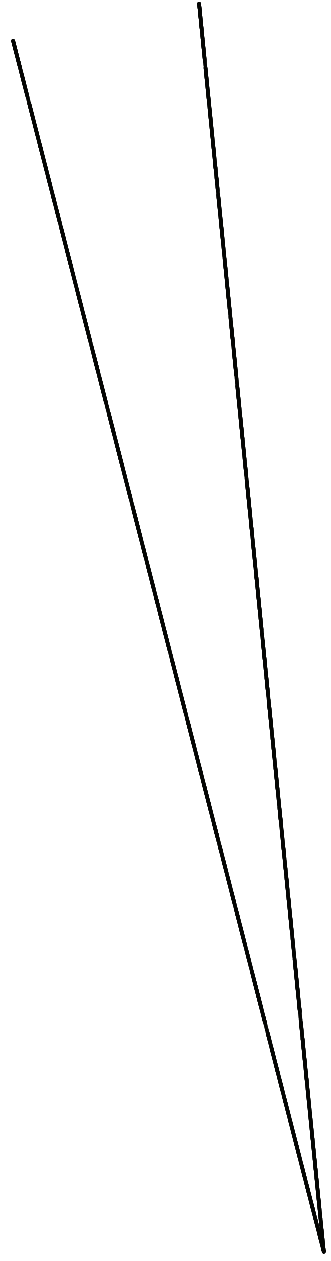
5

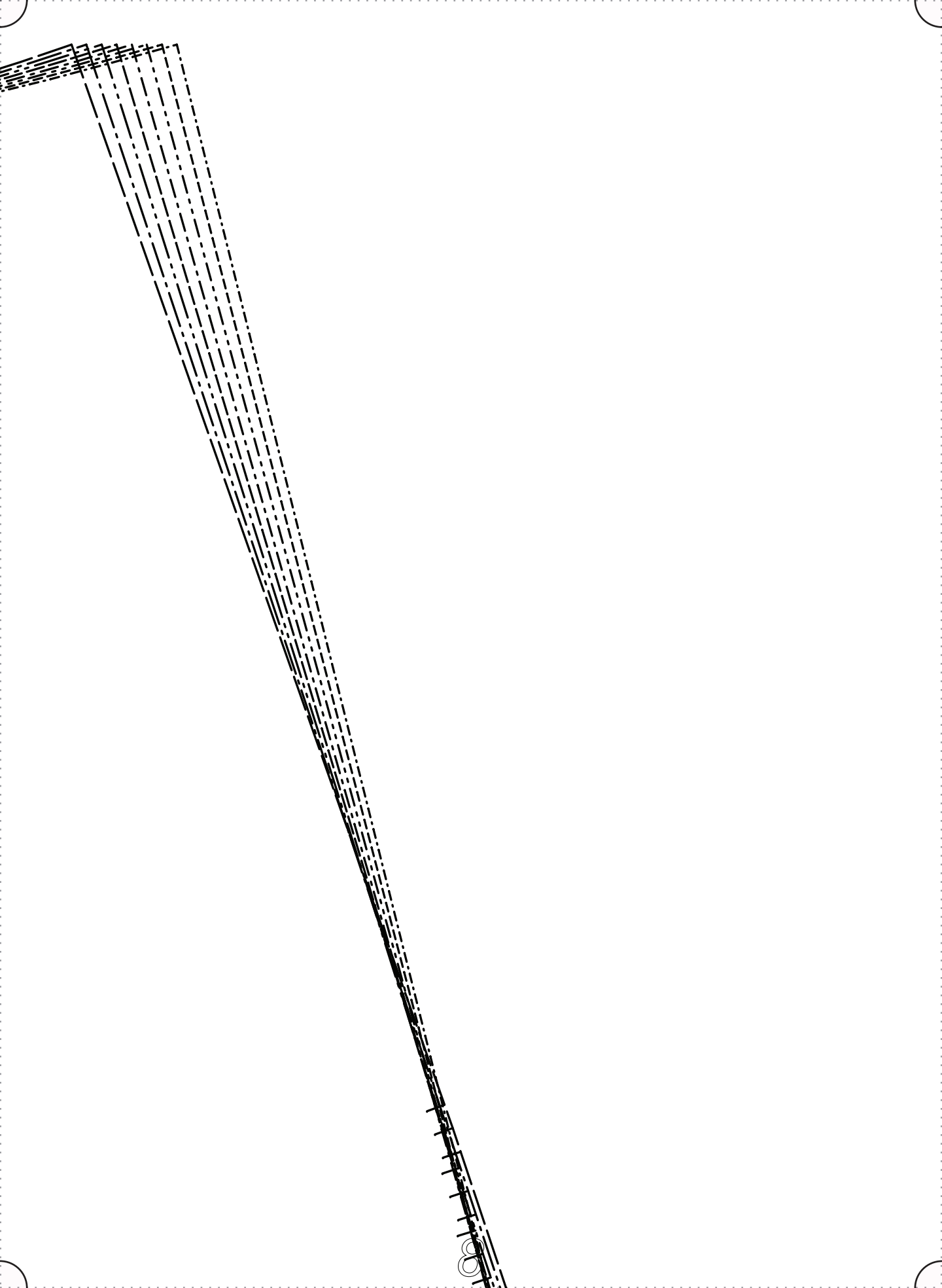


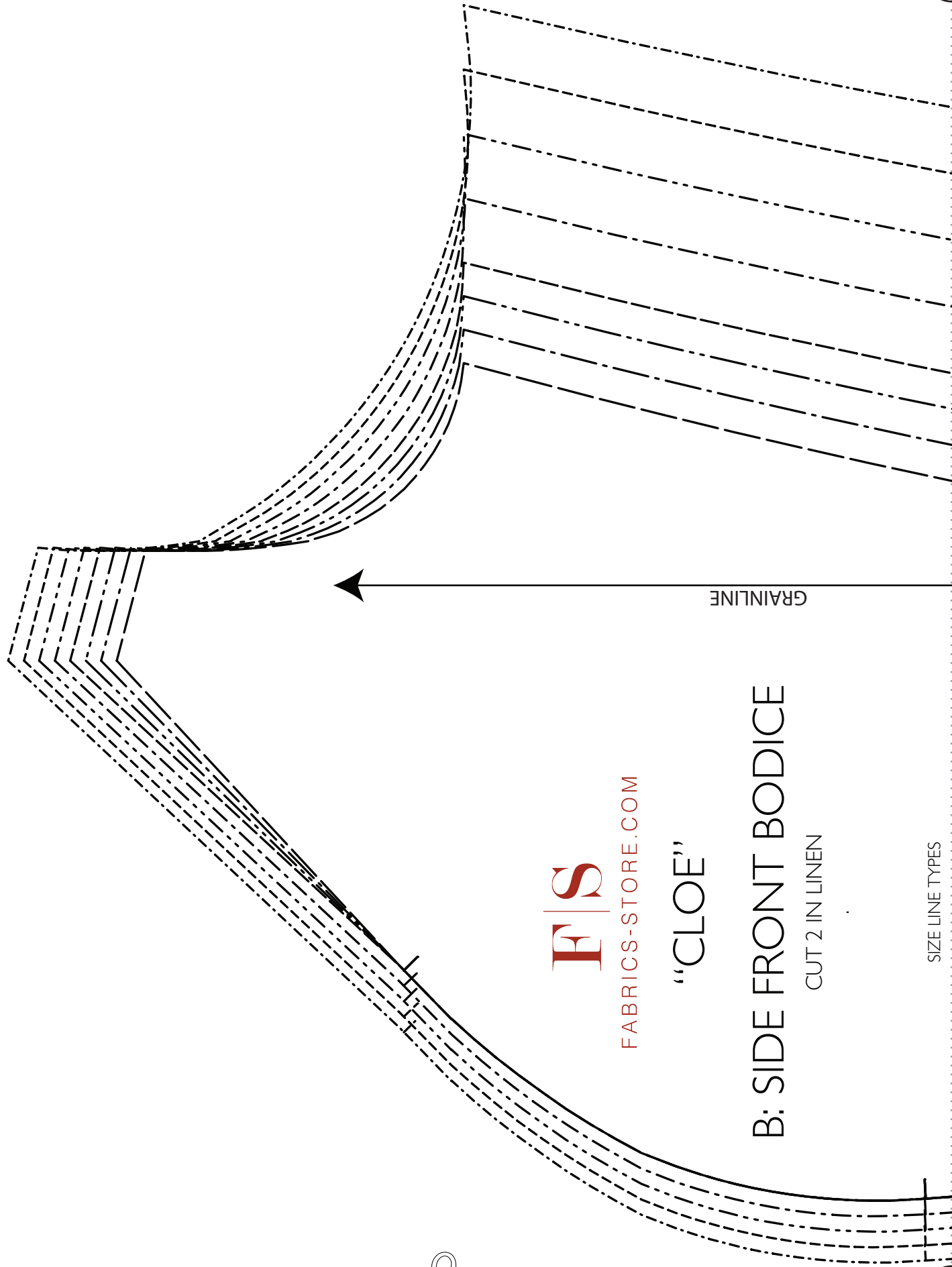


6









**F | S**  
FABRICS-STORE.COM

“CLOE”

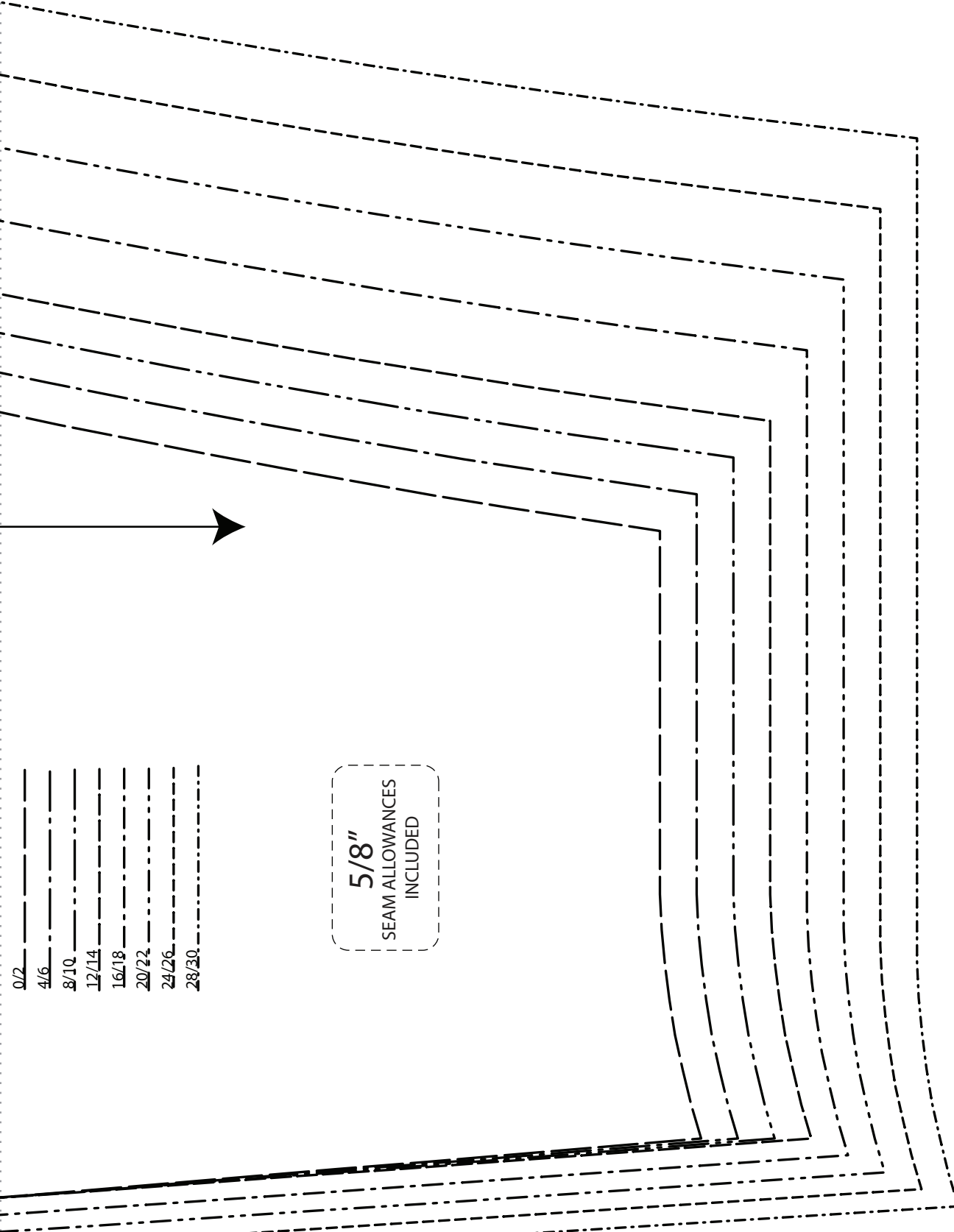
B: SIDE FRONT BODICE

CUT 2 IN LINEN

SIZE LINE TYPES

- 0/2
- 4/6
- 8/10
- 12/14
- 16/18
- 20/22
- 24/26
- 28/30

5/8"  
SEAM ALLOWANCES  
INCLUDED

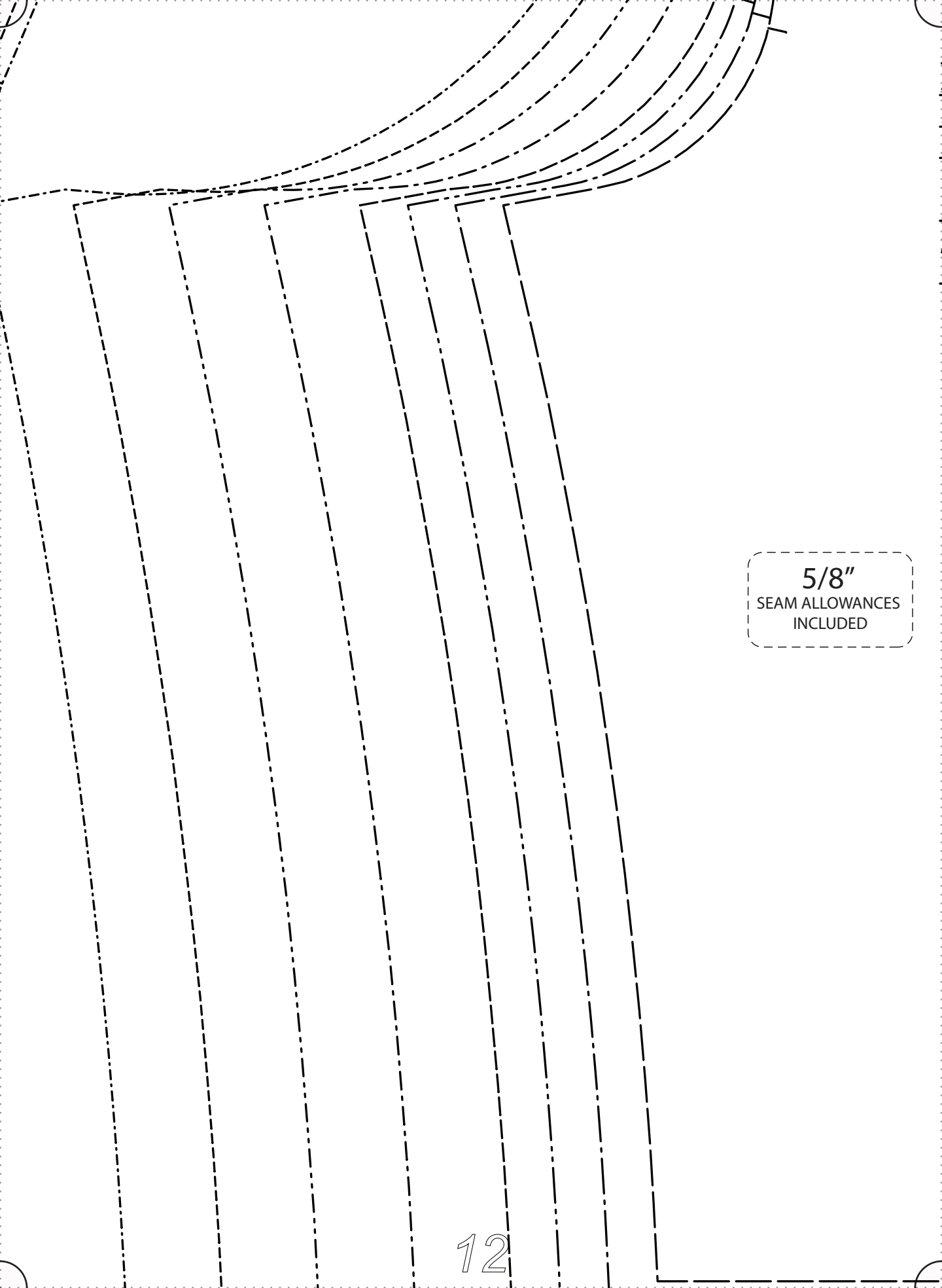


- 0/2 \_\_\_\_\_
- 4/6 \_\_\_\_\_
- 8/10 \_\_\_\_\_
- 12/14 \_\_\_\_\_
- 16/18 \_\_\_\_\_
- 20/22 \_\_\_\_\_
- 24/26 \_\_\_\_\_
- 28/30 \_\_\_\_\_

CENTER FRONT ON FOLD OF FABRIC

5/8"  
SEAM ALLOWANCES  
INCLUDED



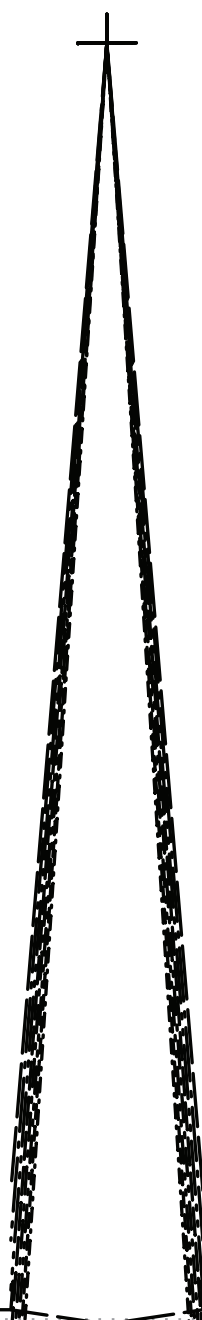


**5/8"**  
SEAM ALLOWANCES  
INCLUDED

SIZE LINE TYPES

- 0/2 \_\_\_\_\_
- 4/6 \_\_\_\_\_
- 8/10 \_\_\_\_\_
- 12/14 \_\_\_\_\_
- 16/18 \_\_\_\_\_
- 20/22 \_\_\_\_\_
- 24/26 \_\_\_\_\_
- 28/30 \_\_\_\_\_

GRAINLINE



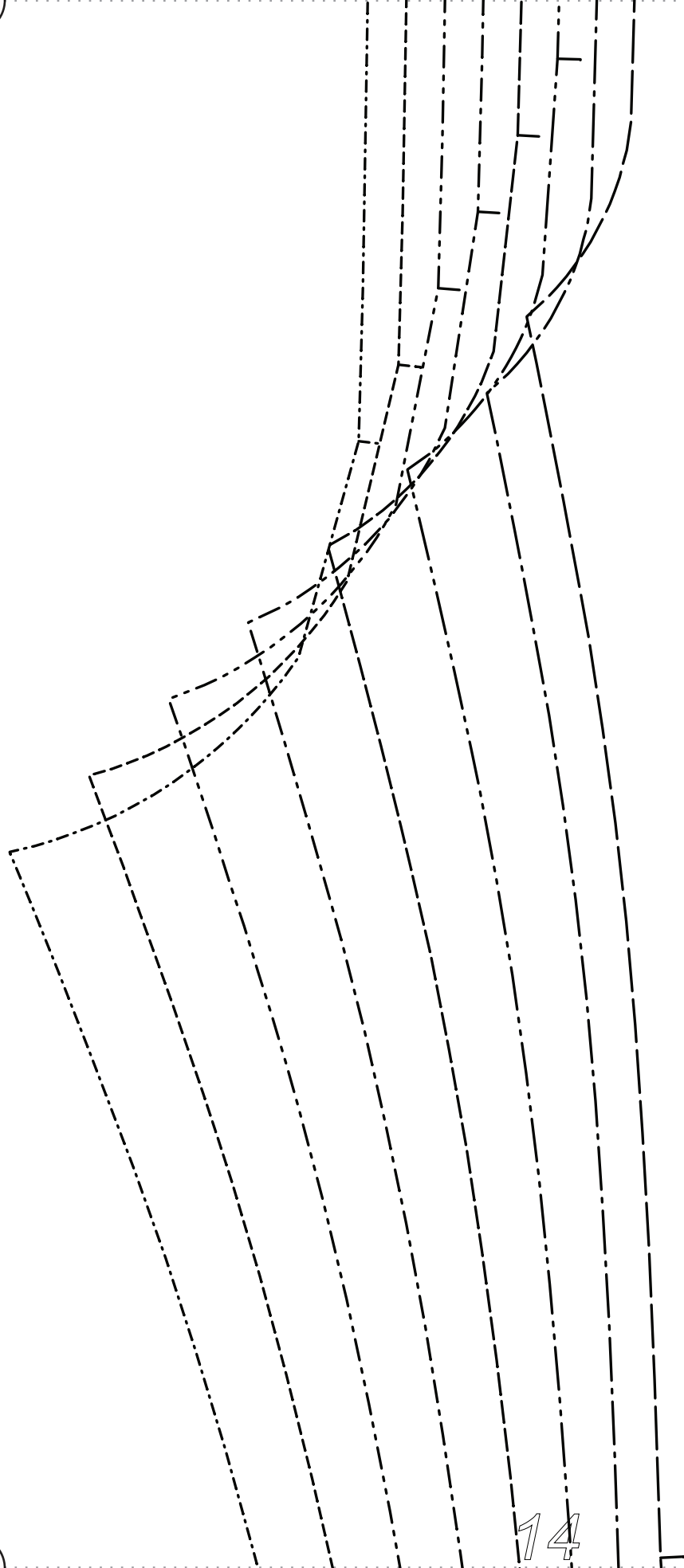
D: FRO

CU

S

- 0/2 \_\_\_\_\_
- 4/6 \_\_\_\_\_
- 8/10 \_\_\_\_\_
- 12/14 \_\_\_\_\_
- 16/18 \_\_\_\_\_
- 20/22 \_\_\_\_\_
- 24/26 \_\_\_\_\_
- 28/30 \_\_\_\_\_

**5/8"**  
SEAM ALLOWANCES  
INCLUDED

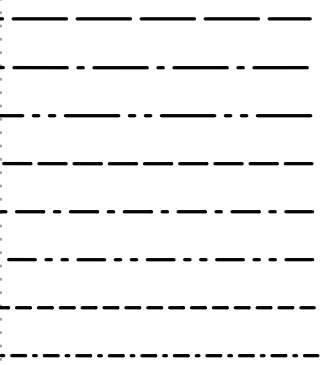




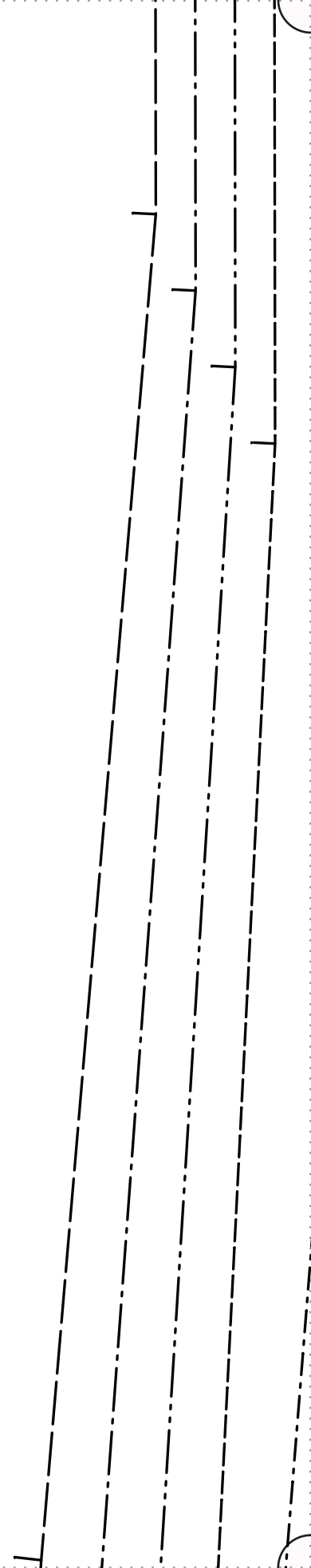
# FRONT PANT

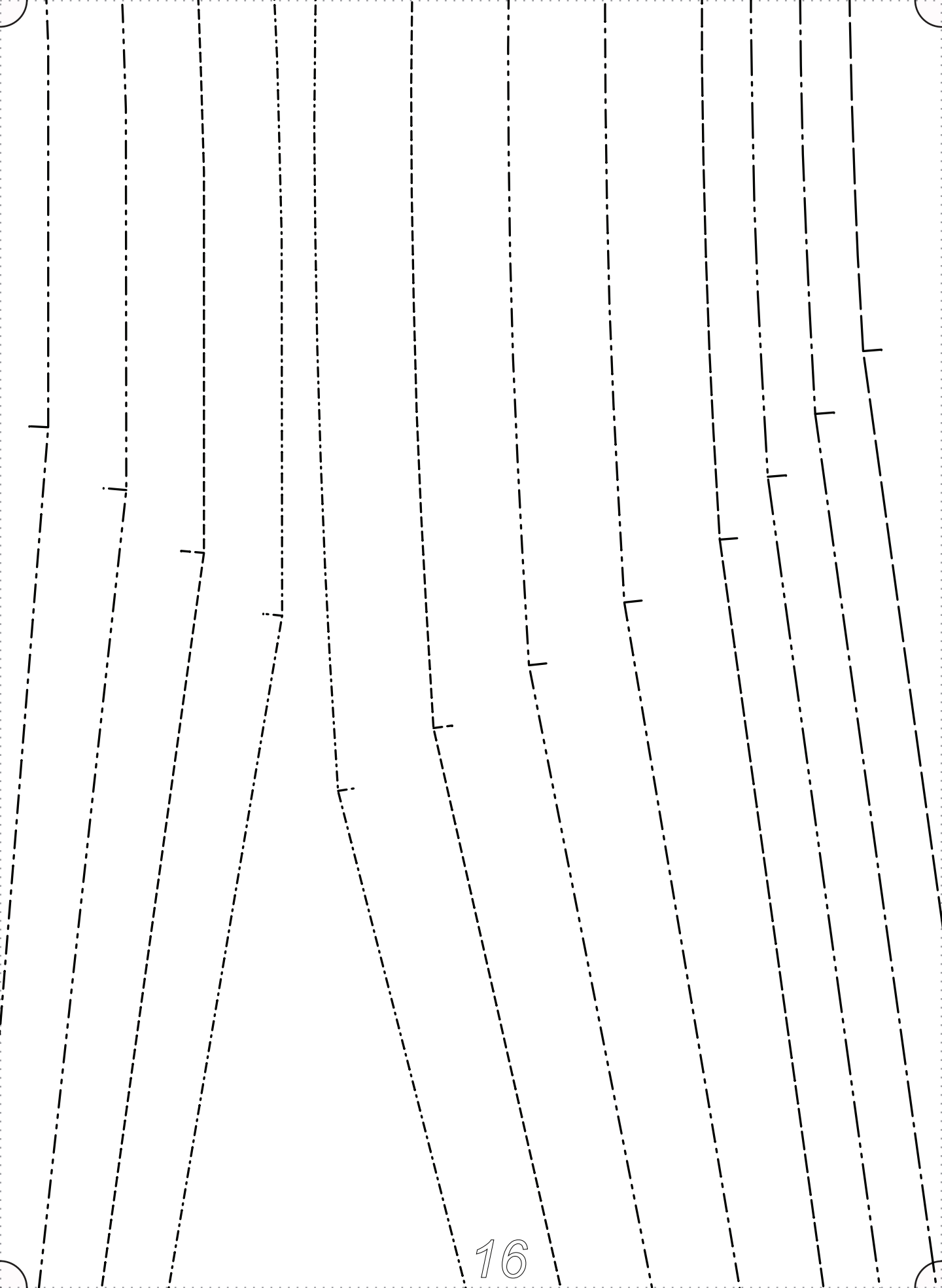
WALLET 2 IN LINEN

LINE SIZE LINE TYPES



GRAINLINE





## “CLOE”

### E: BACK PANT

CUT 2 IN LINEN

#### SIZE LINE TYPES

0/2 \_\_\_\_\_

4/6 \_\_\_\_\_

8/10 \_\_\_\_\_

12/14 \_\_\_\_\_

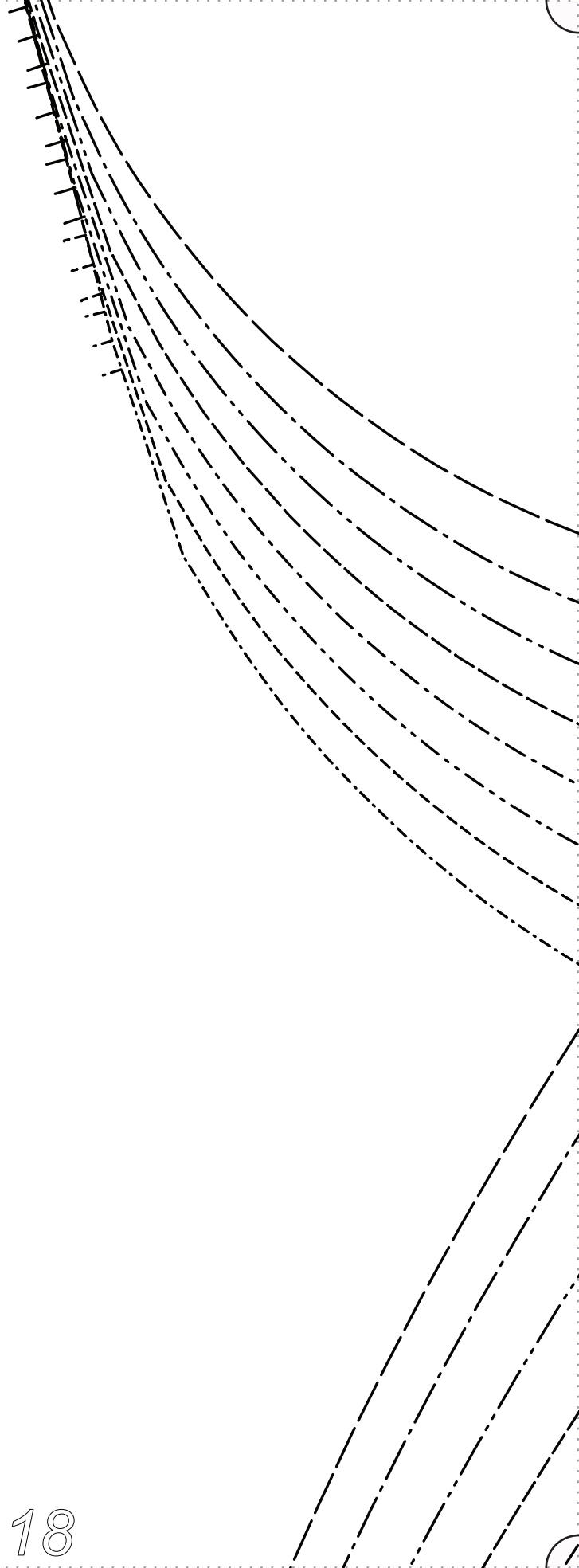
16/18 \_\_\_\_\_

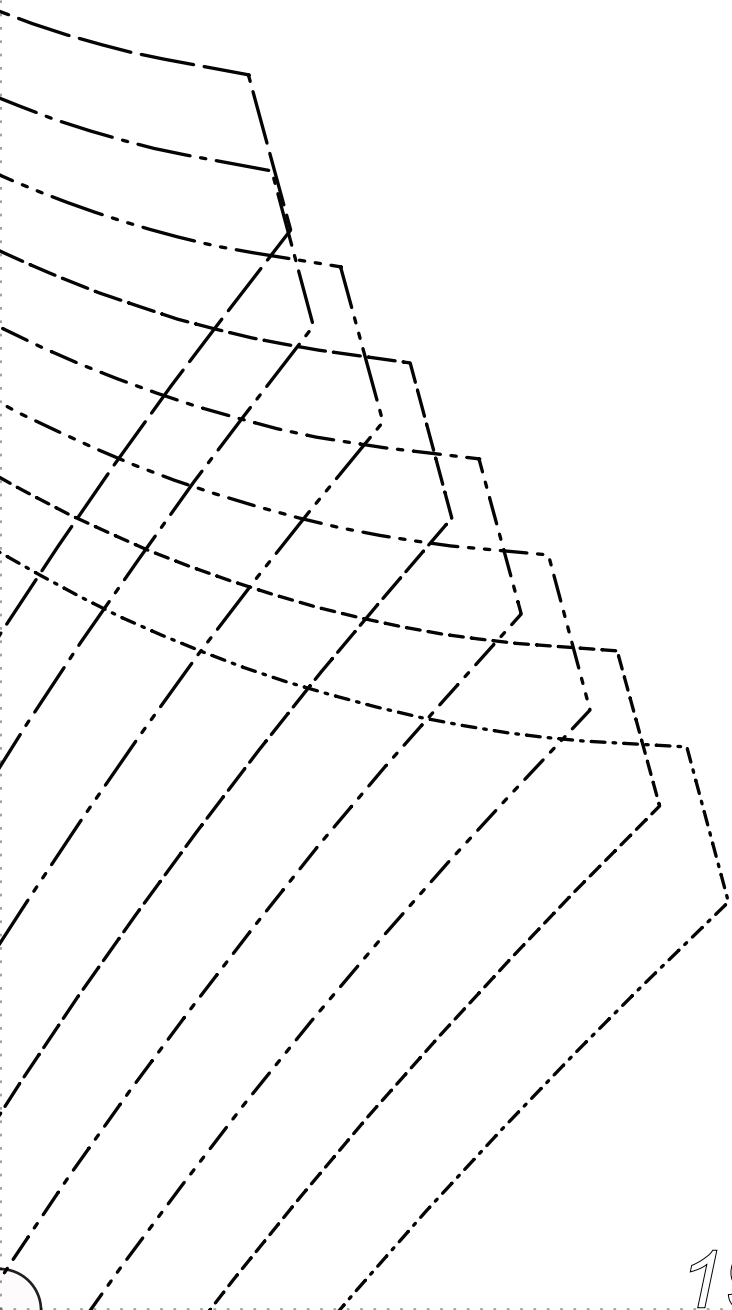
20/22 \_\_\_\_\_

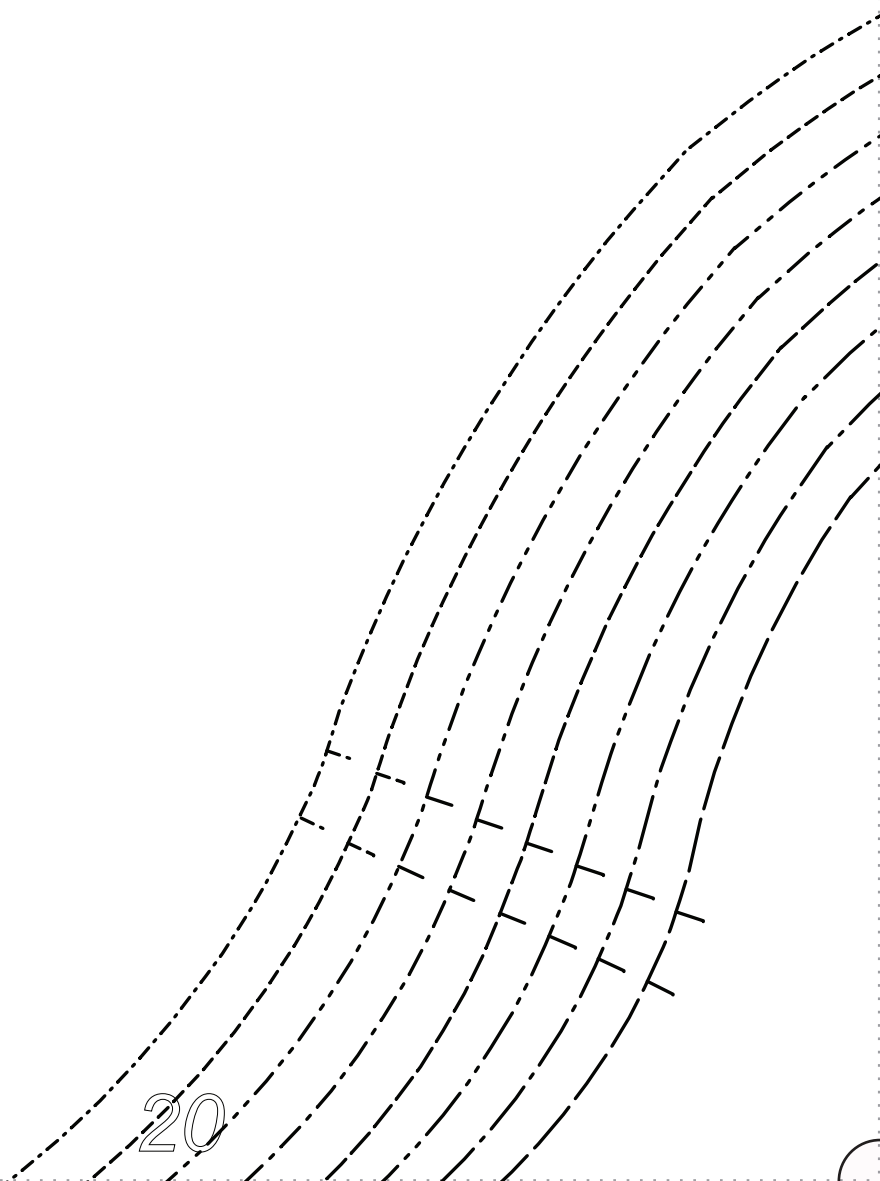
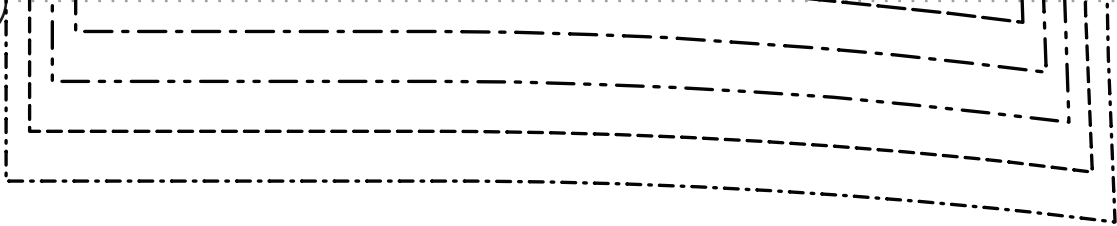
24/26 \_\_\_\_\_

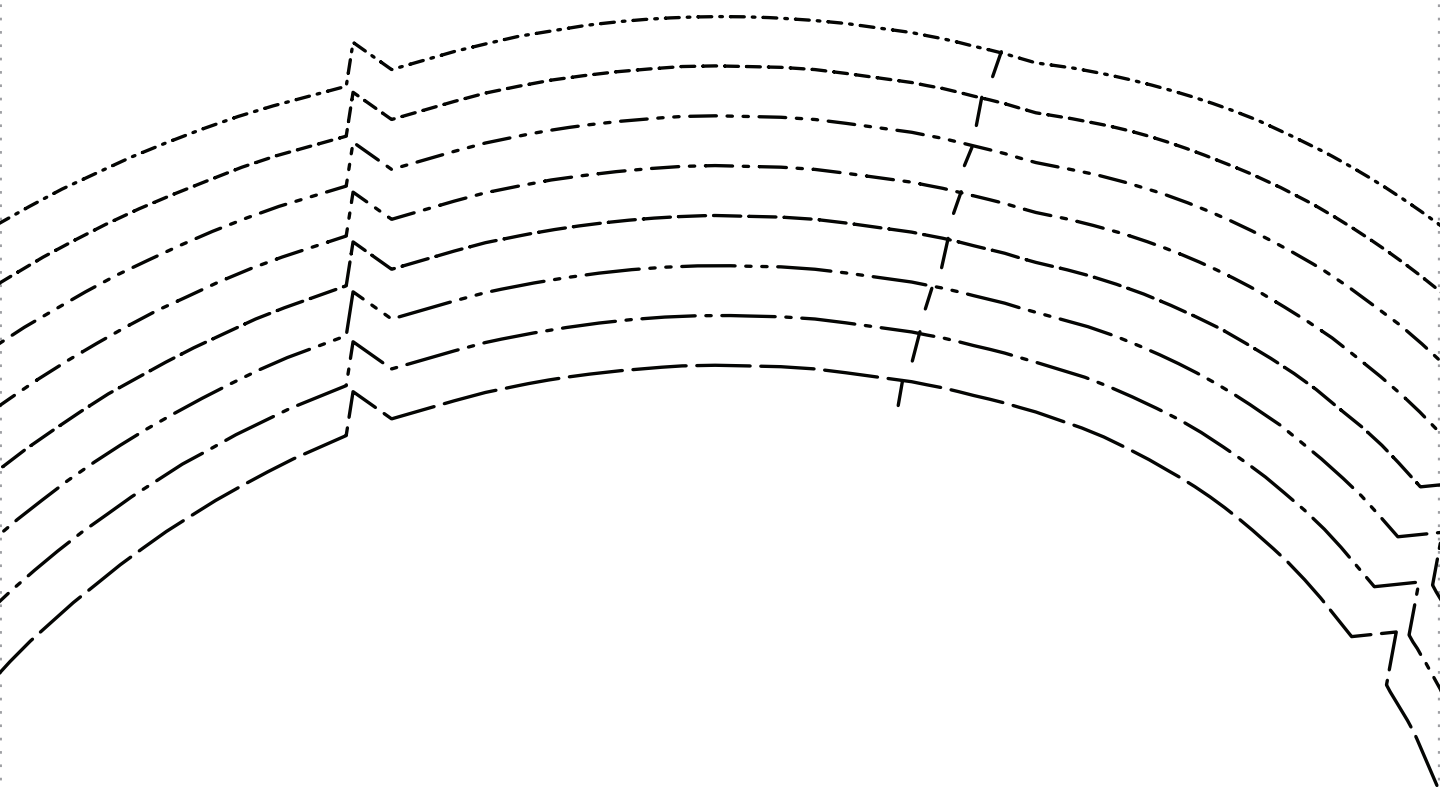
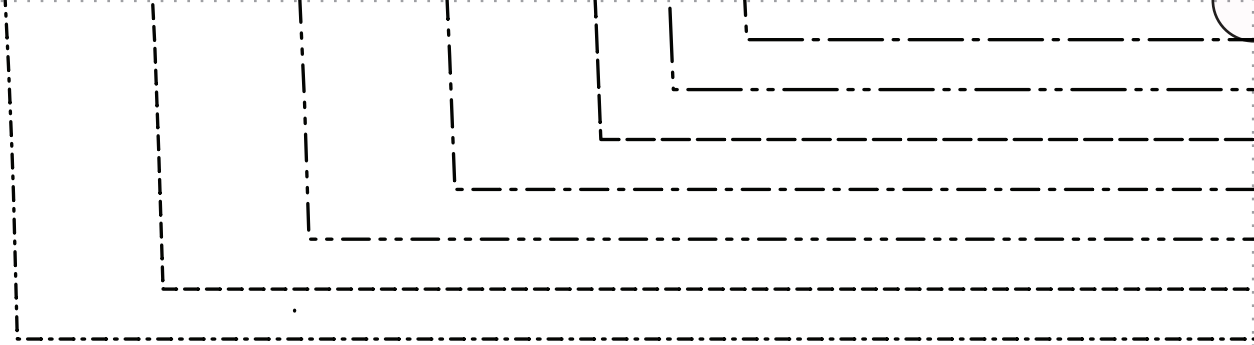
28/30 \_\_\_\_\_

**5/8"**  
SEAM ALLOWANCES  
INCLUDED



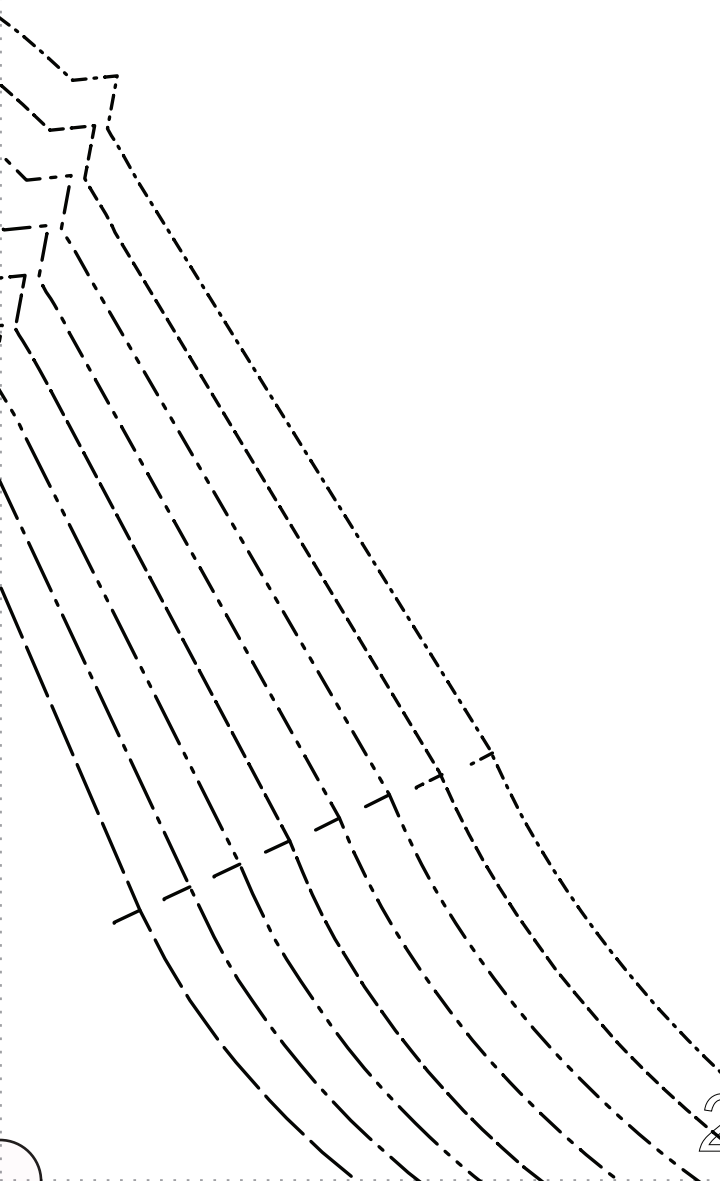
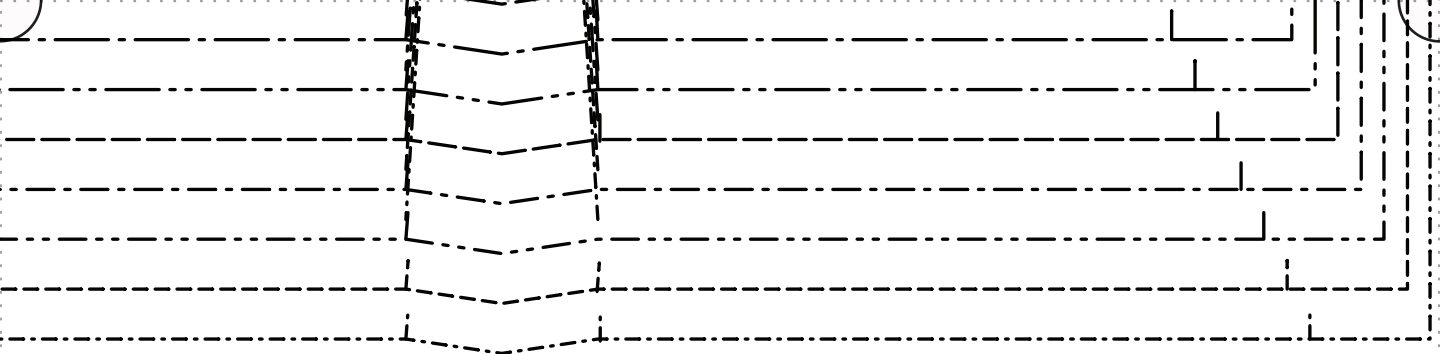




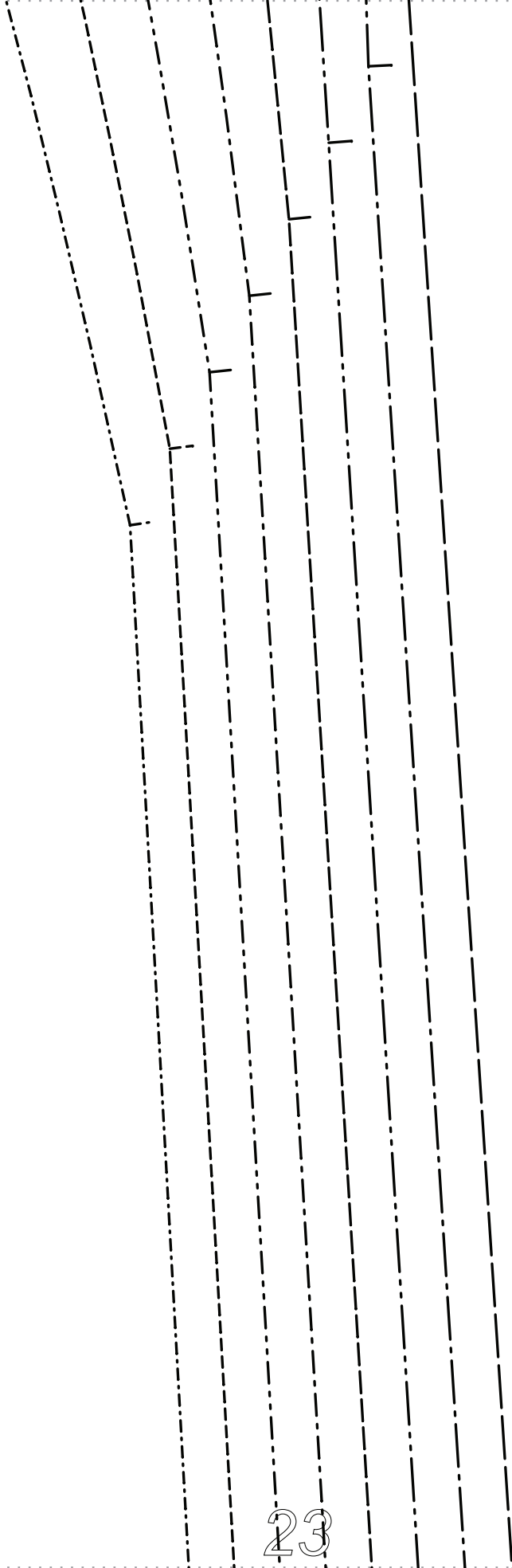


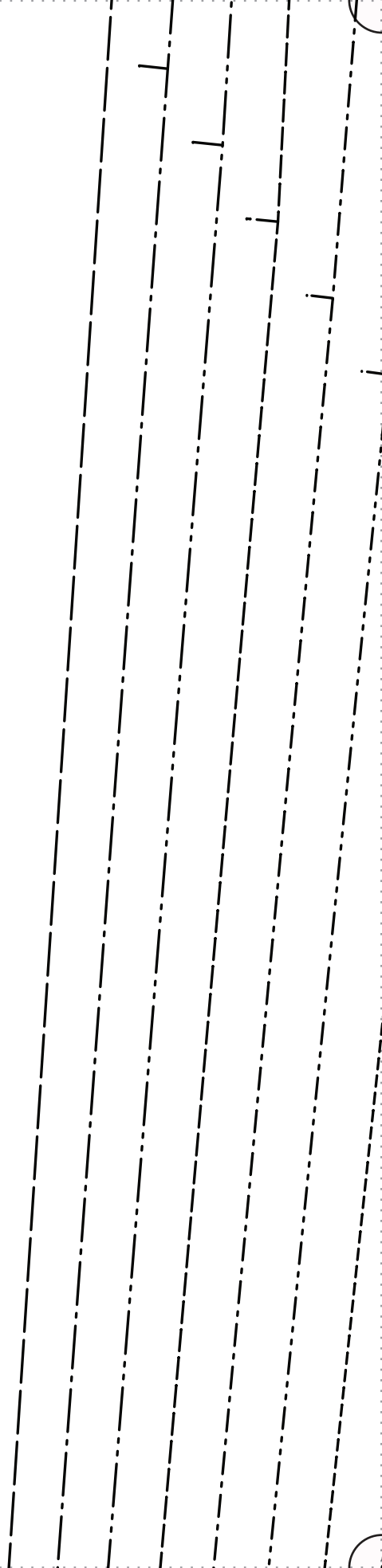
F|S

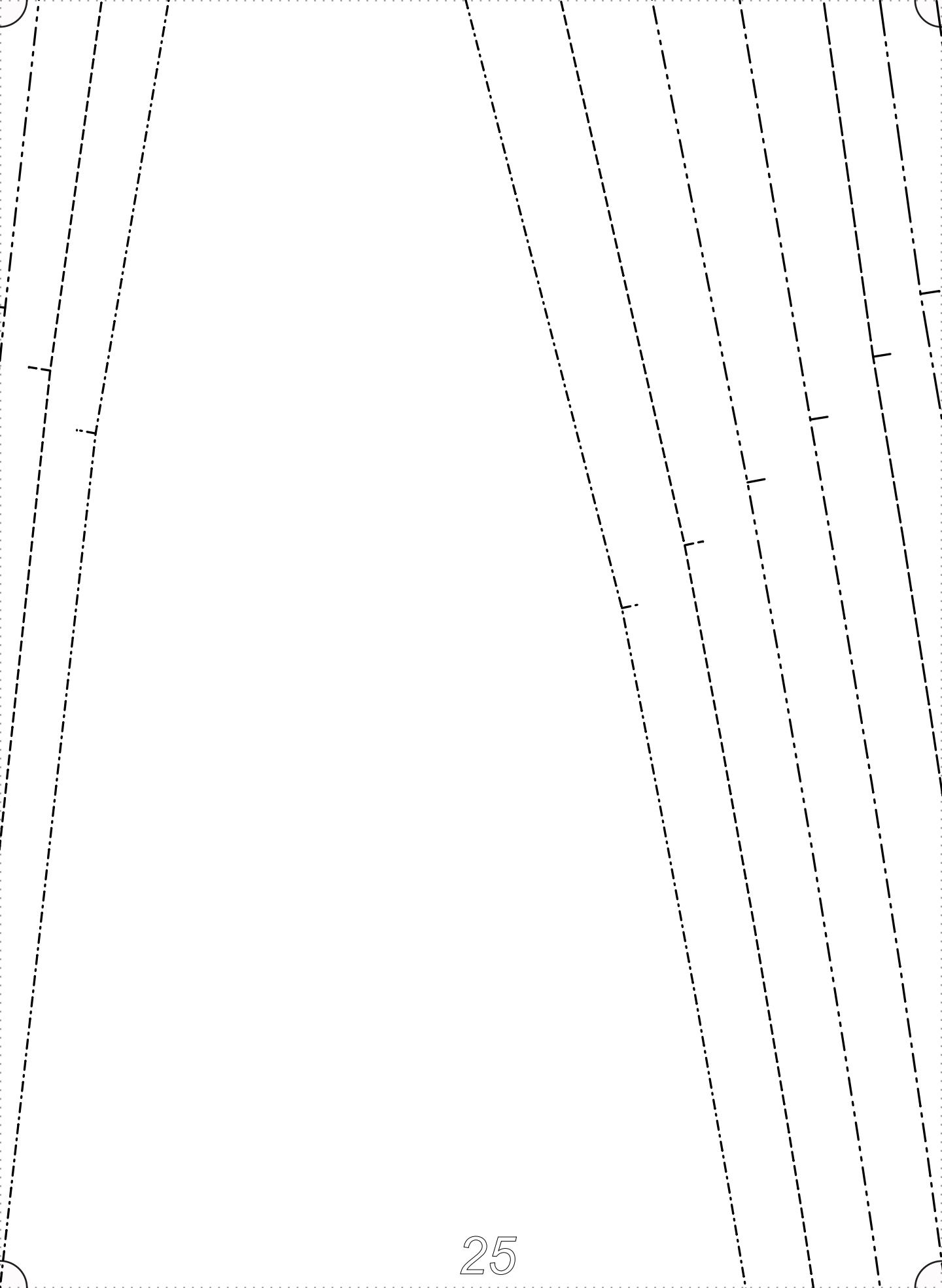
FABRICS-STORE.COM

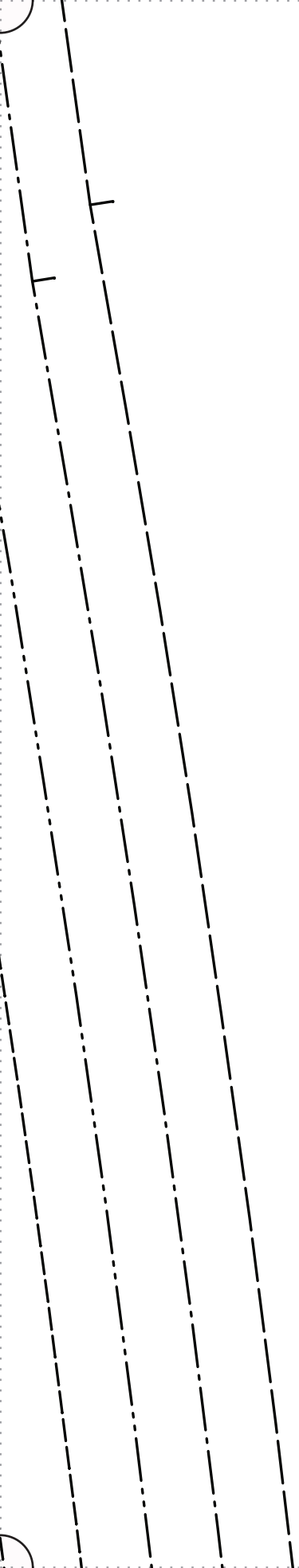
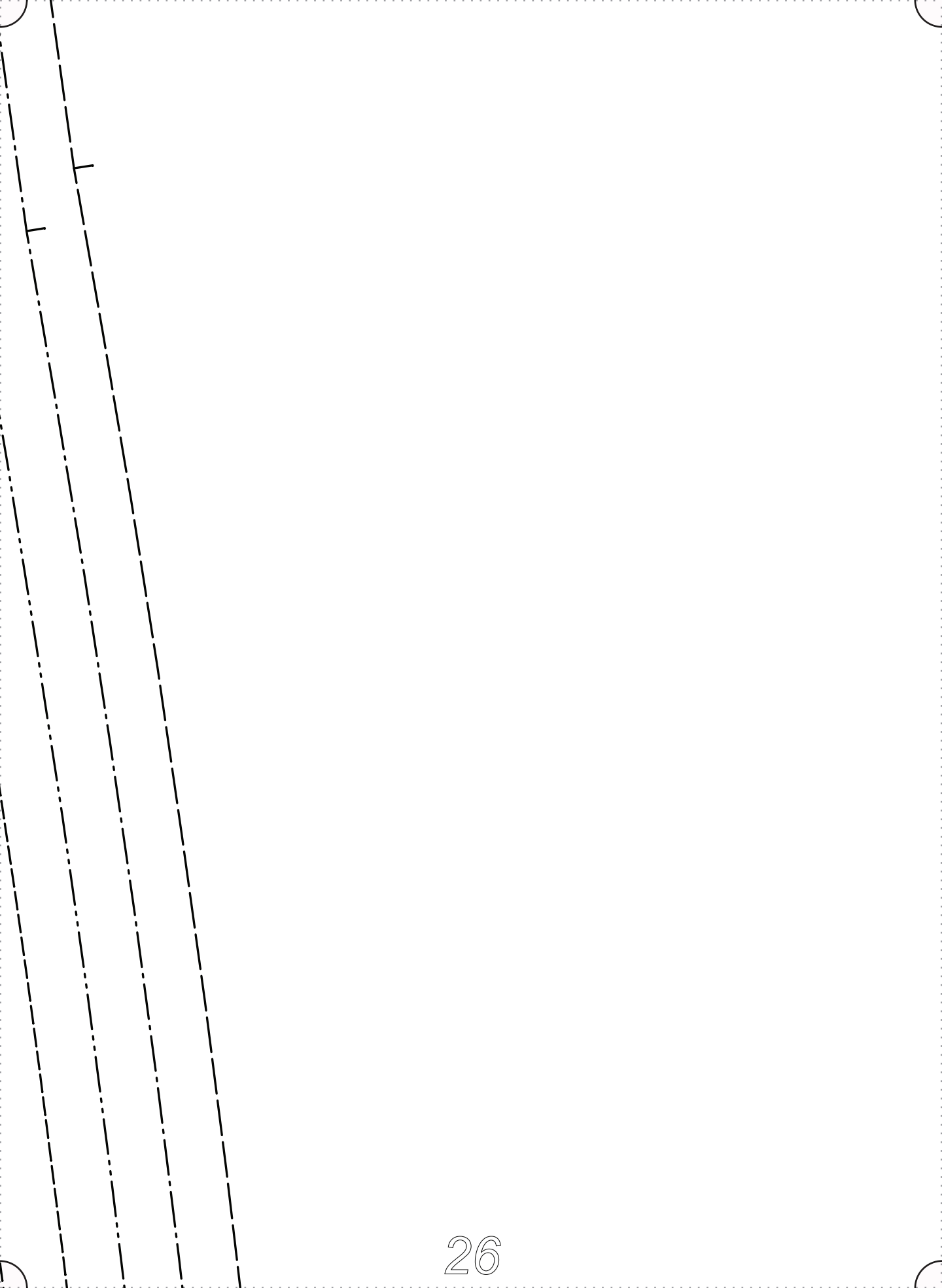


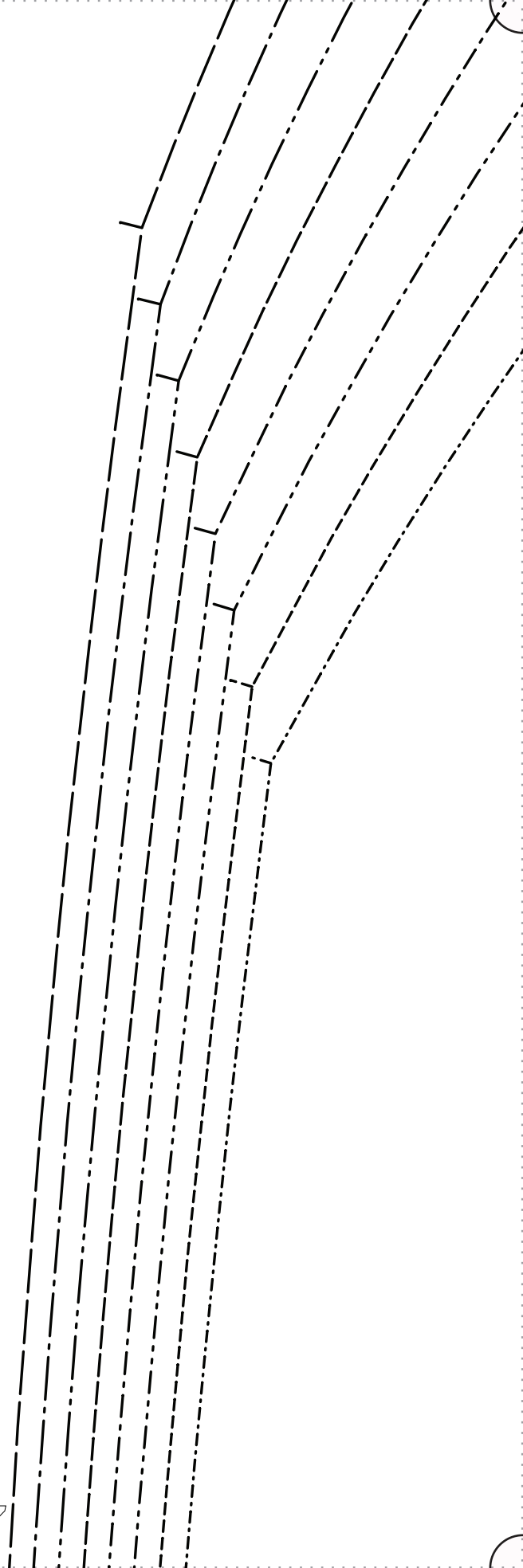




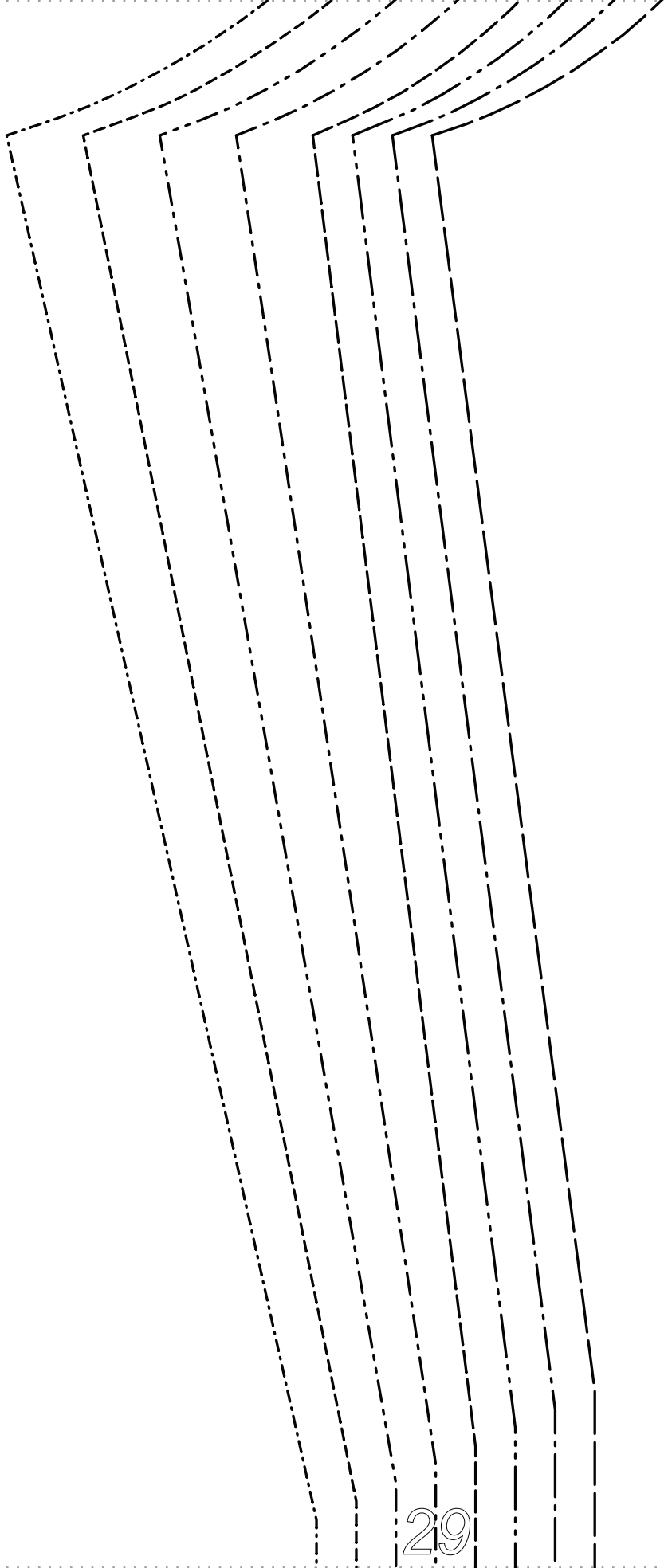












# "CLOE"

## F: SLEEVE

CUT 2 IN LINEN

### SIZE LINE TYPES

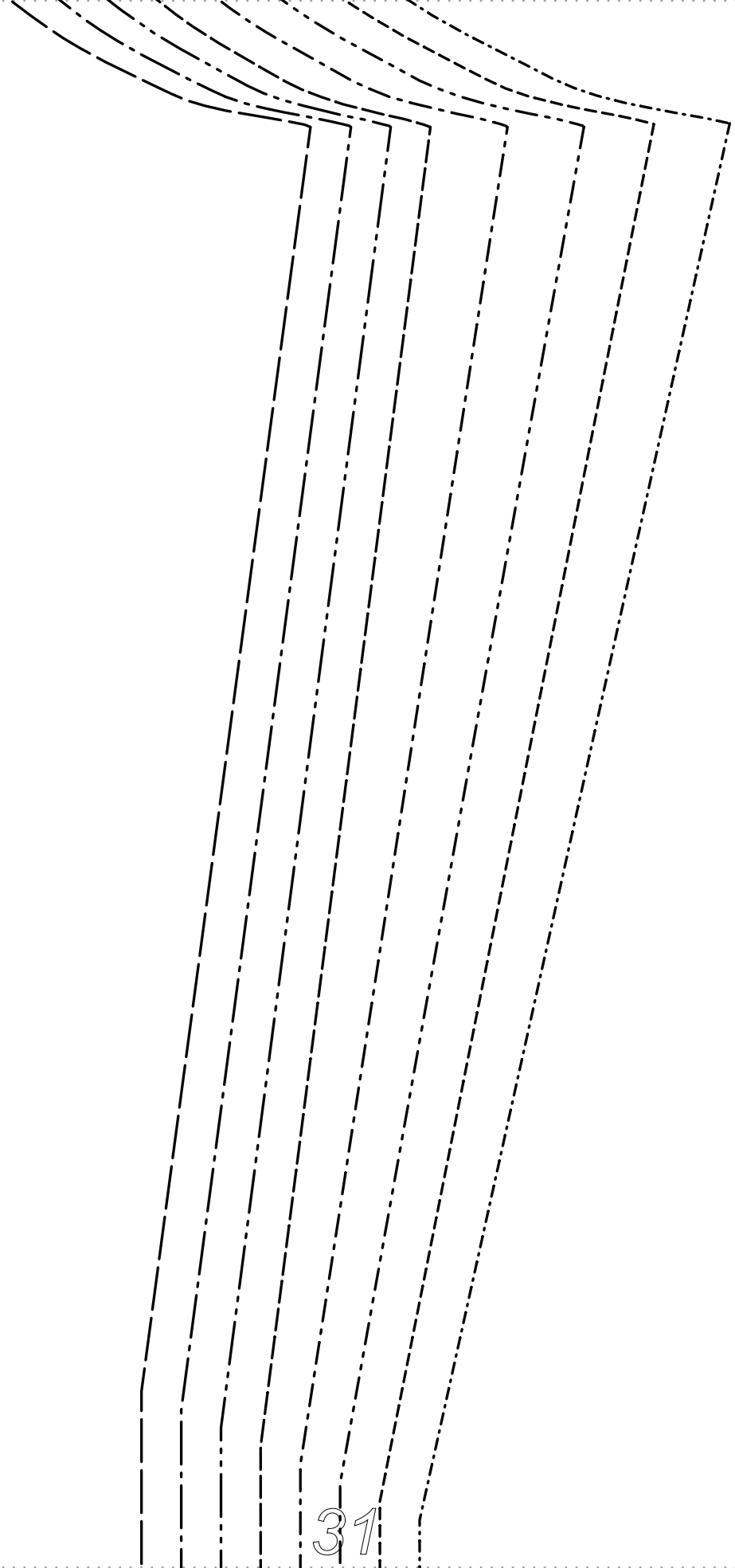
- 0/2 \_\_\_\_\_
- 4/6 \_\_\_\_\_
- 8/10 \_\_\_\_\_
- 12/14 \_\_\_\_\_
- 16/18 \_\_\_\_\_
- 20/22 \_\_\_\_\_
- 24/26 \_\_\_\_\_
- 28/30 \_\_\_\_\_

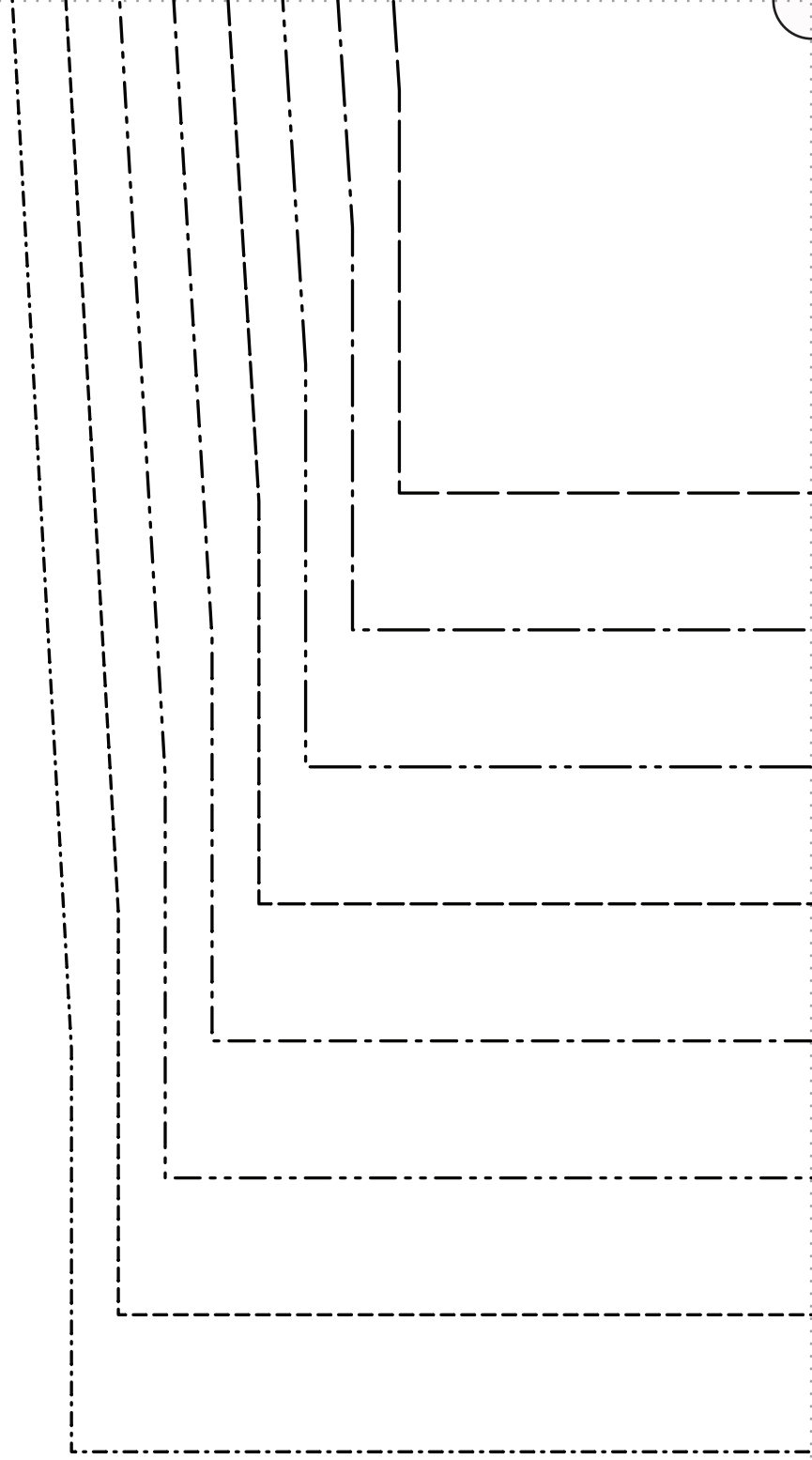
GRAINLINE

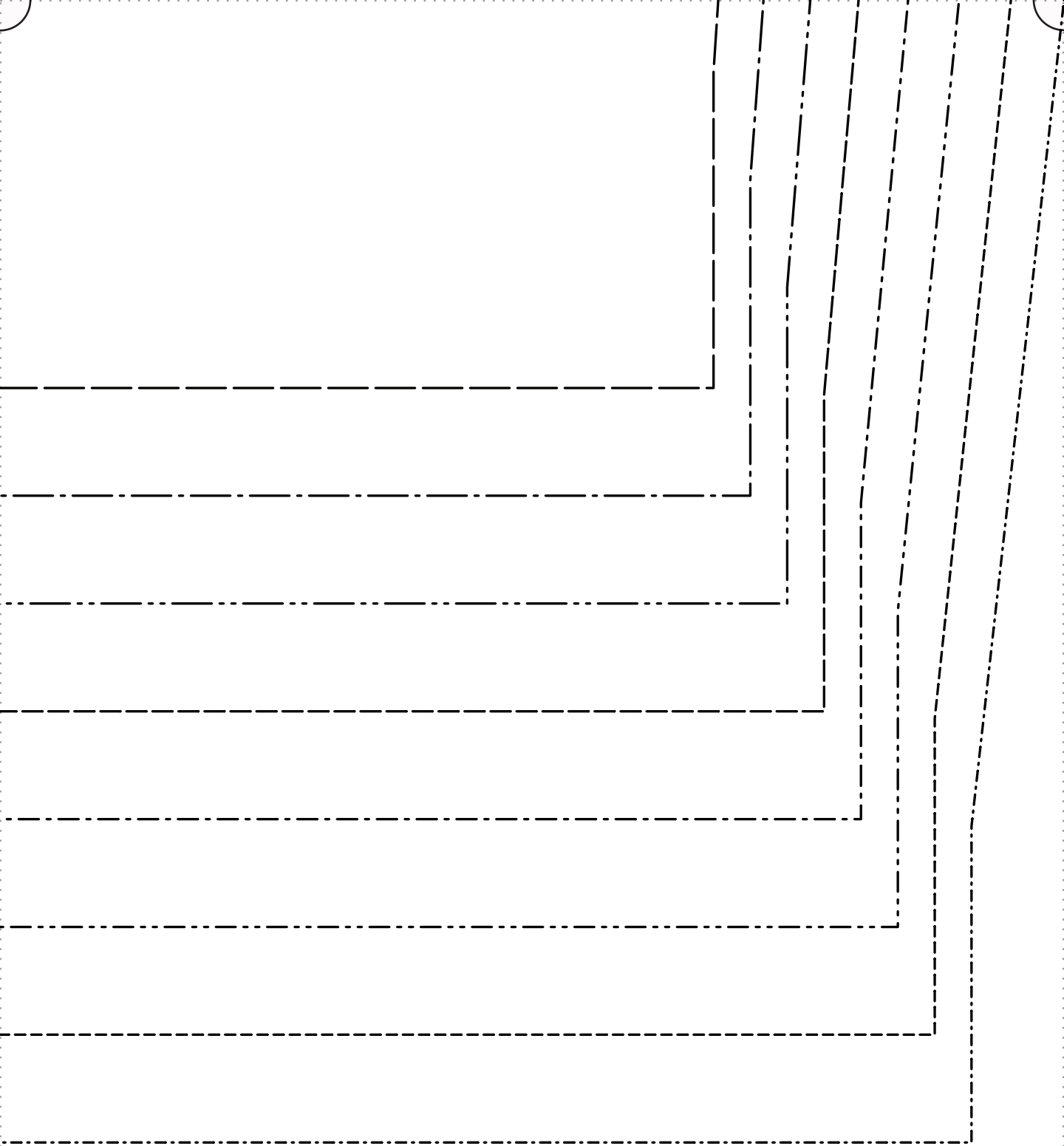




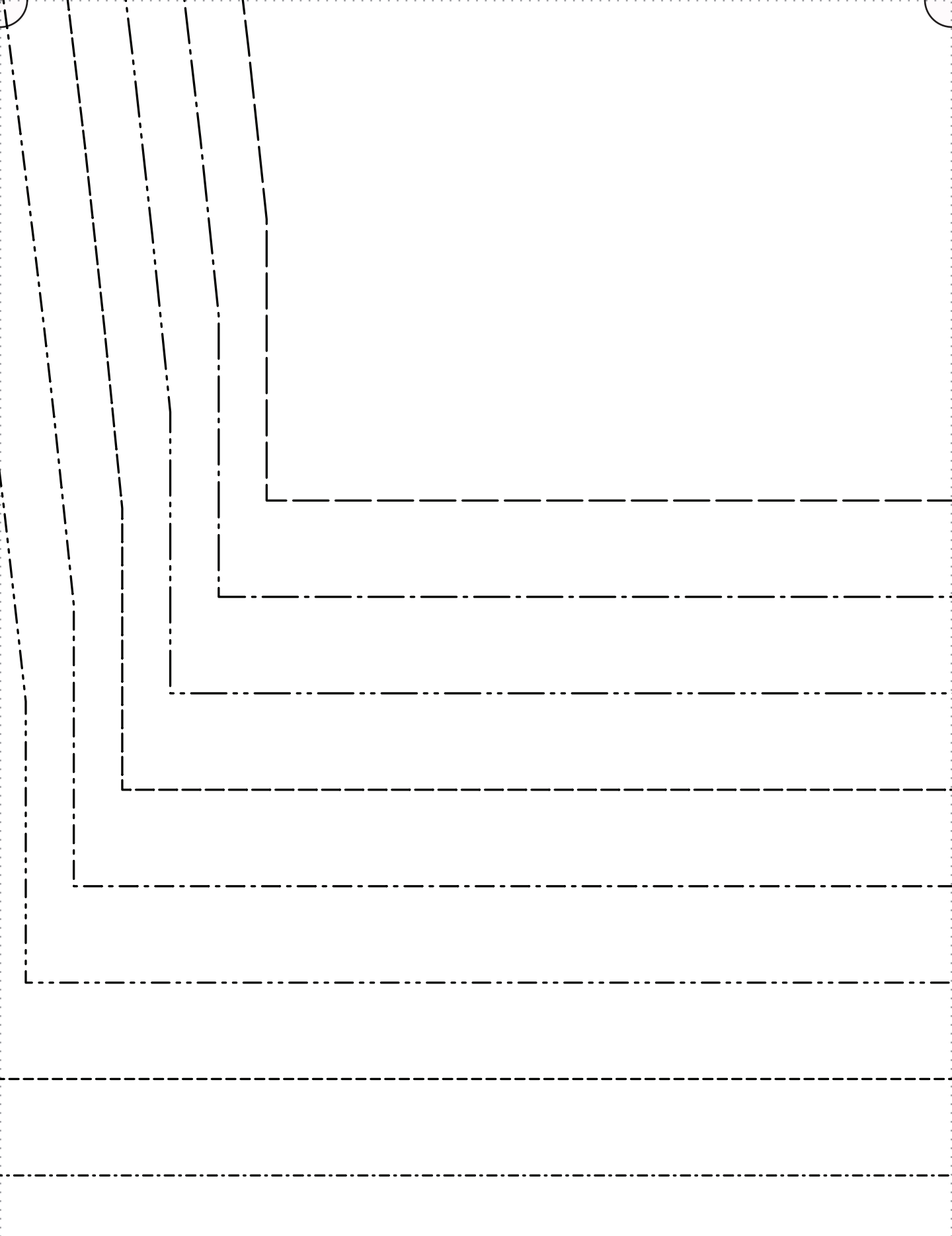
5/8"  
SEAM ALLOWANCES  
INCLUDED

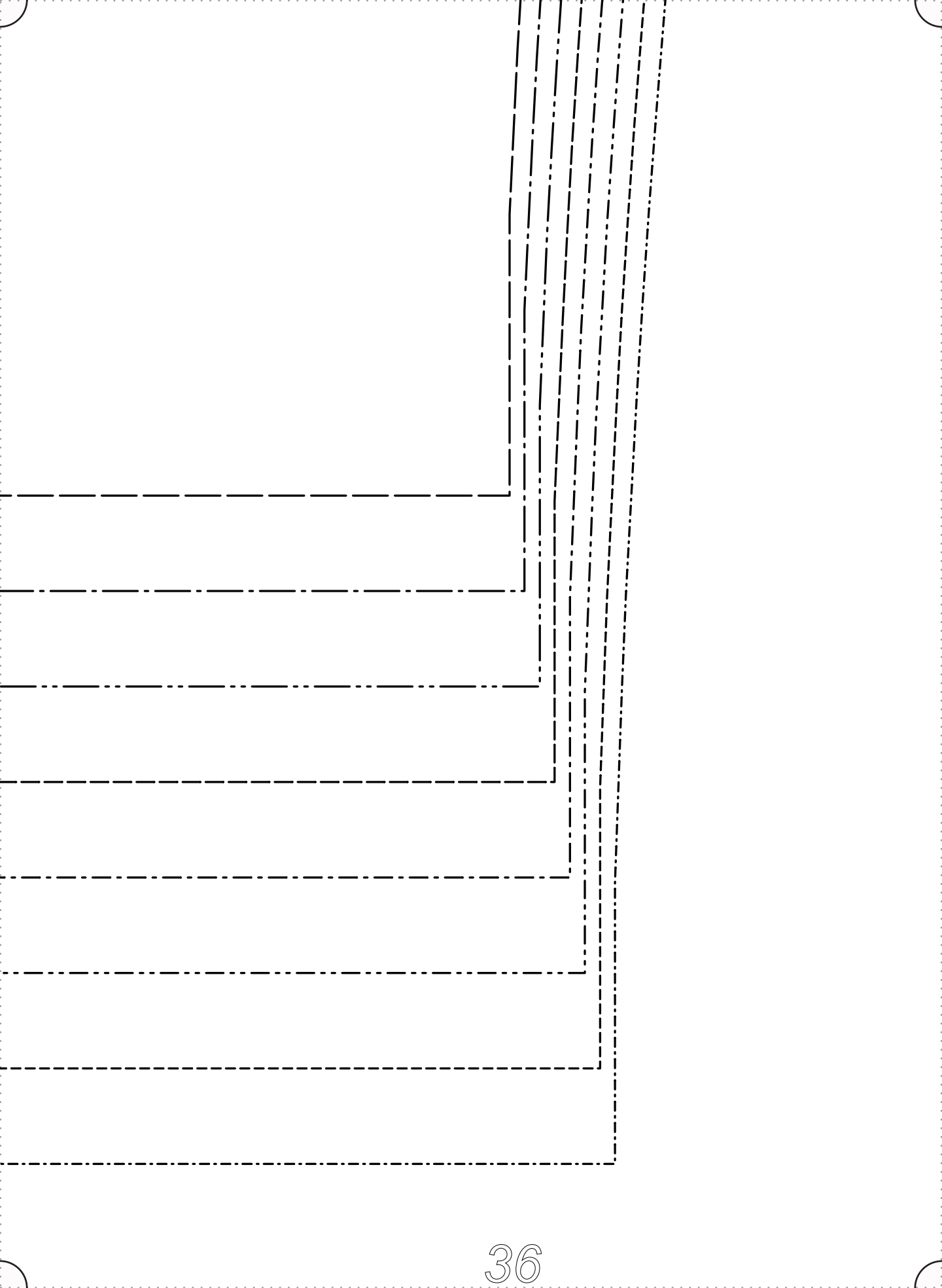


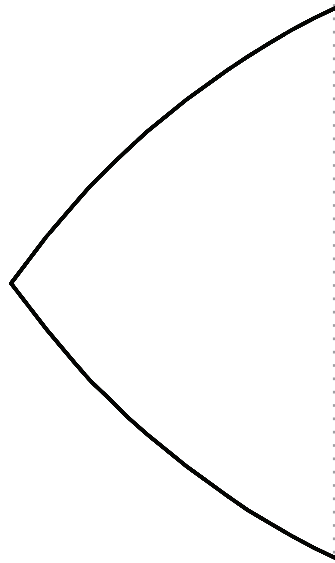
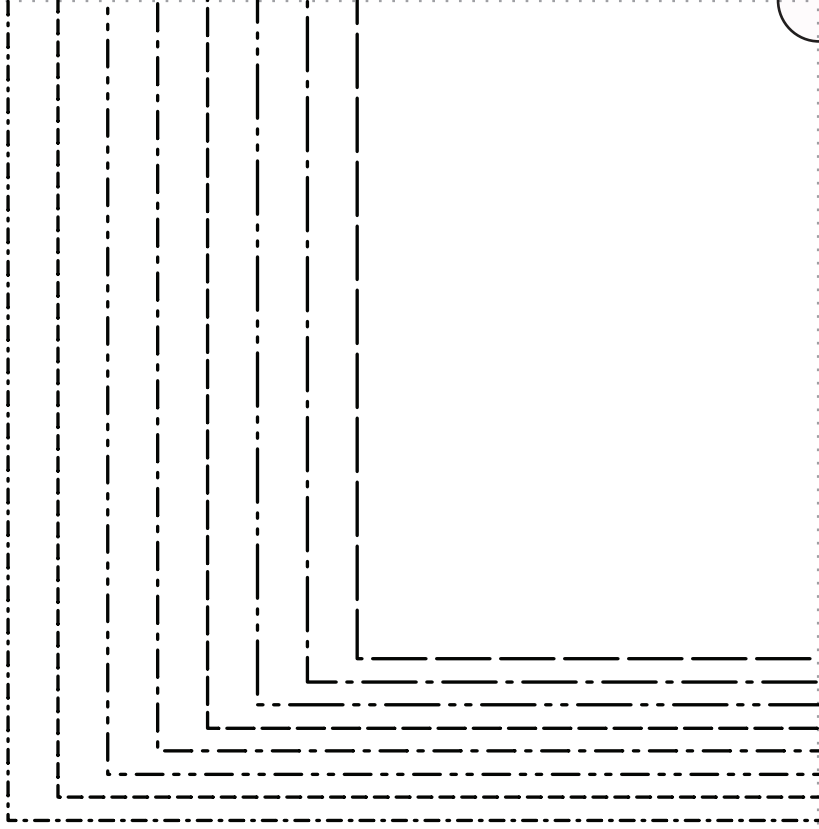


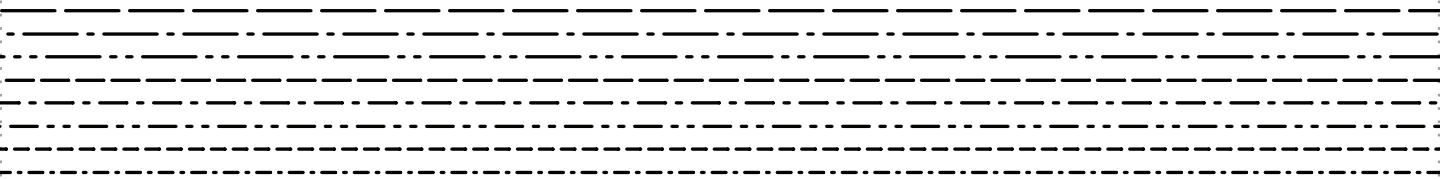












**F|S**

FABRICS-STORE.COM

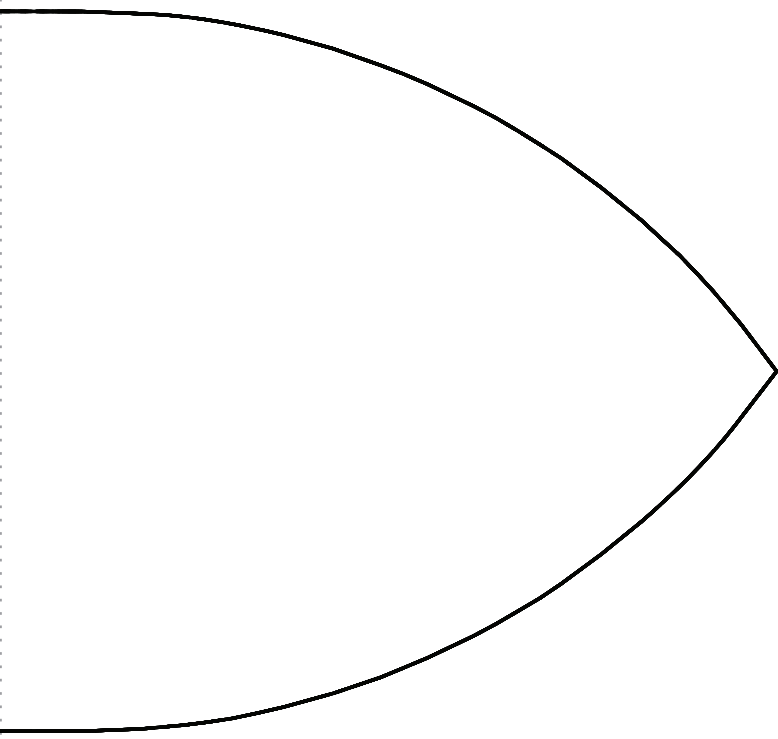
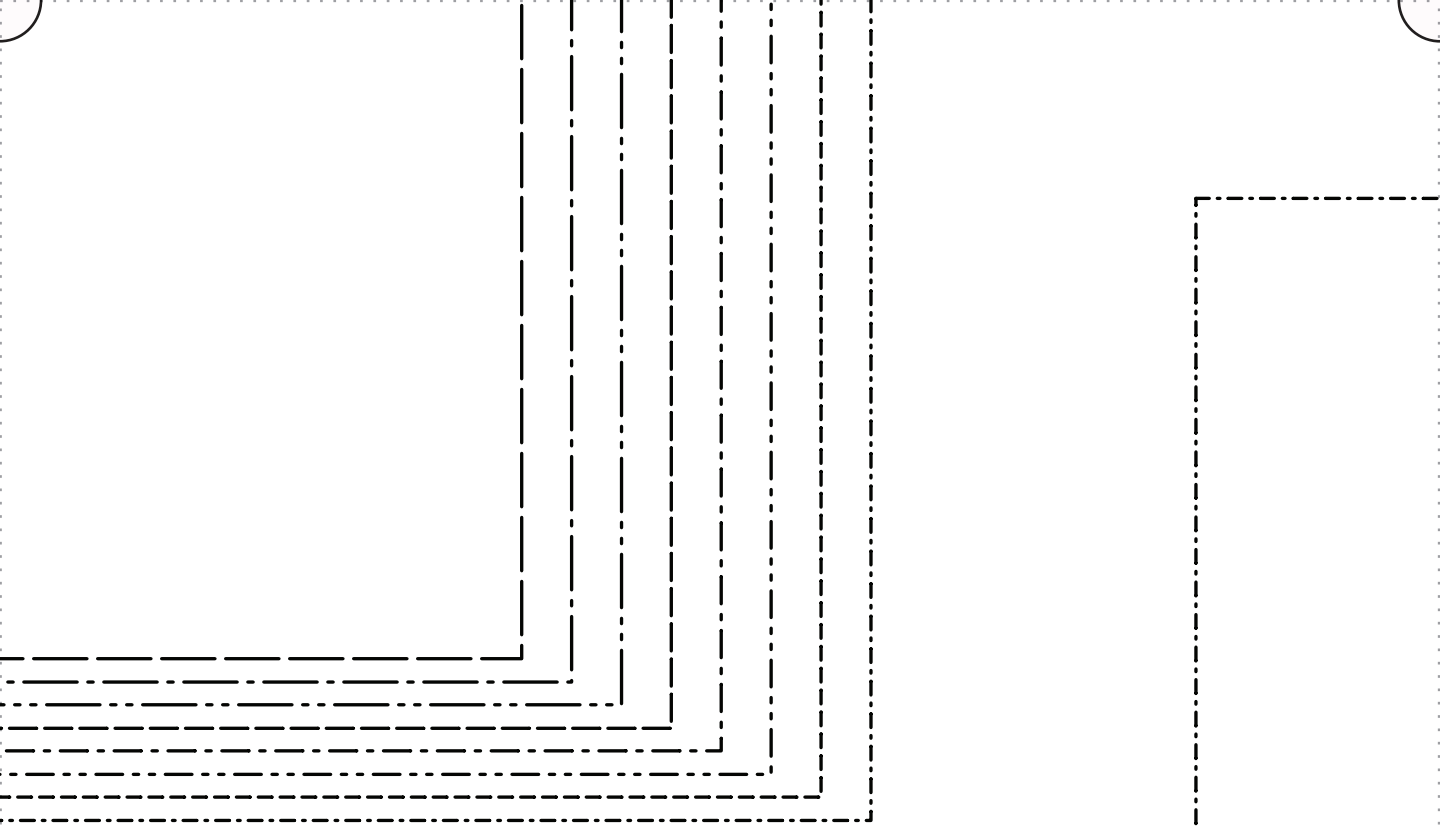
“CLOE”

G: SLEEVE TIE

CUT 2 IN LINEN

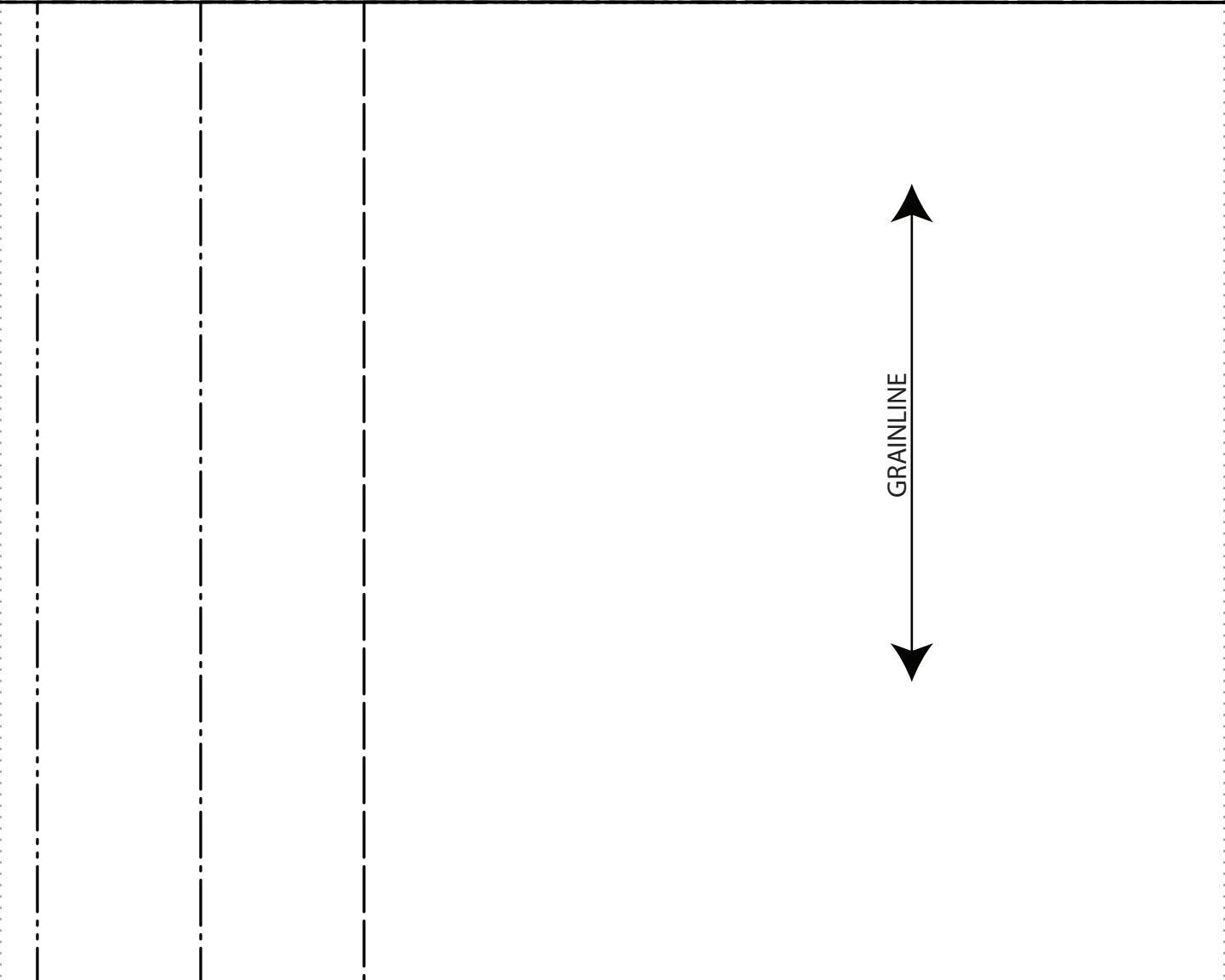
GRAINLINE





--	--	--	--	--	--	--

28/30	24/26	20/22	16/18	12/14	8/10	4/6
-------	-------	-------	-------	-------	------	-----



GRAINLINE

0/2

F | S

FABRICS-STORE.COM

“CLOE”

F|S

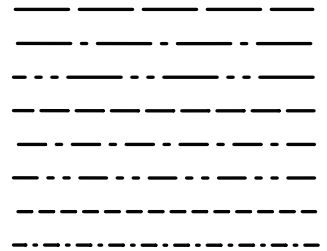
FABRICS-STORE.COM

“CLOE”

H: WAIST TIE

CUT 2 IN LINEN

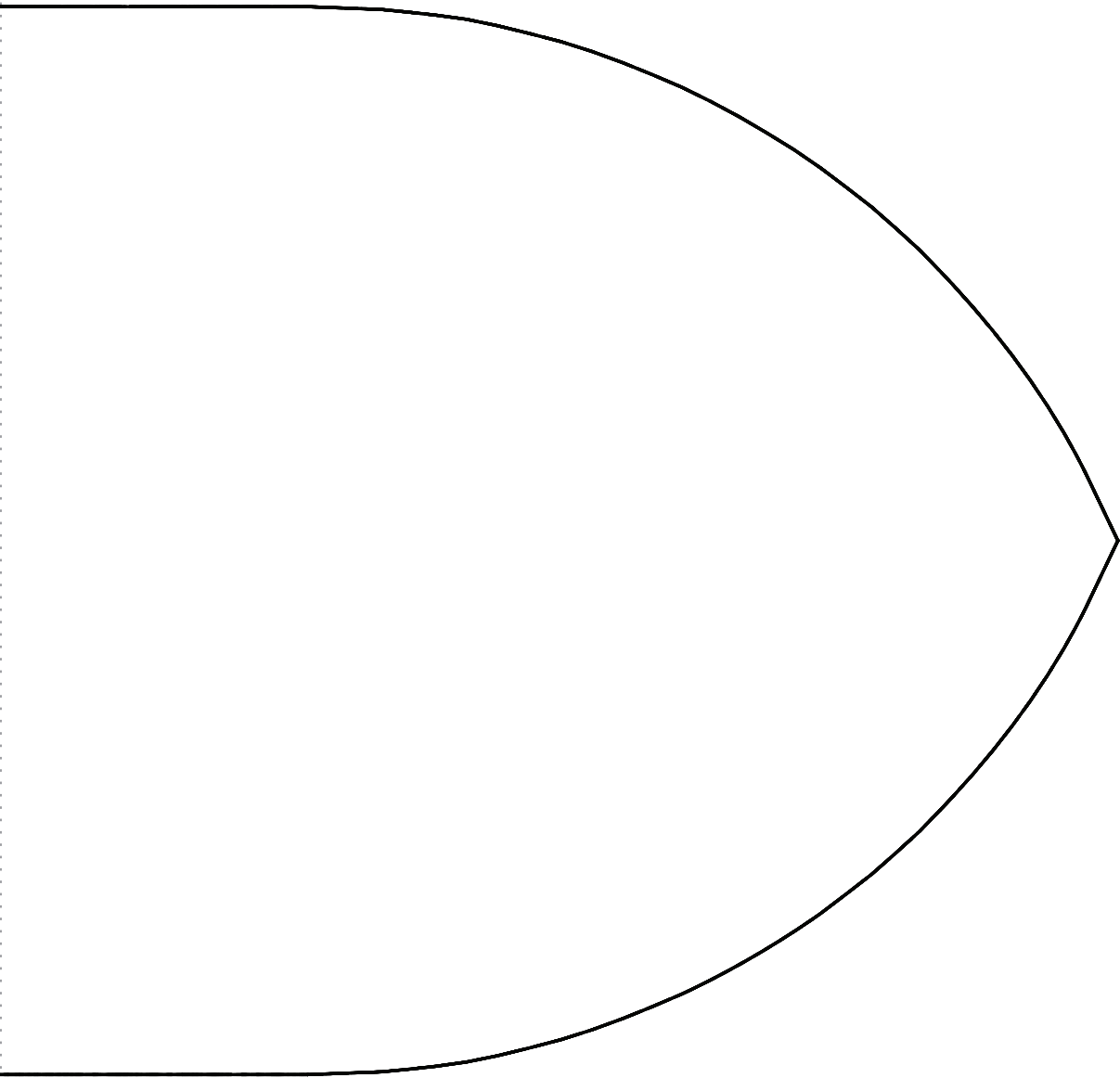
SIZE LINE TYPES



BIAS STRIP

CUT 1 ON FOLD OR  
CUT 2 AND JOIN

**5/8"**  
SEAM ALLOWANCES  
INCLUDED



FOLD OUT

---

---

# *Thank you*

---

*We work hard on making our patterns beautiful enough to meet your standards.*

*If you feel like sharing praise or helpful criticism, please send us your comments to [ask@fabrics-store.com](mailto:ask@fabrics-store.com)*