

F|S

FABRICS-STORE.COM

Our linen is nothing short of addicting

ANTONIA KAFTAN



A SUMMER STAPLE

Antonia is a chic, easy to wear maxi kaftan that could do double duty as a beach cover-up.

Available in Ladies Sizes 0/2 to 28/30

866.620.2008 ASK@FABRICS-STORE.COM FABRICS-STORE.COM

ANTONIA PATTERN

With its ankle length, a deep V-neckline and two dramatic side slits, it looks relaxed and feels glamorous. The detachable belt can be tied around the waist to give it more definition.

Sized for ladies 0/2 to 28/30

*Simple step-by-step instructions on our blog
The Thread at Fabrics-Store.com*

MASHA WEARS IL042 902 FS PREMIER FINISH - 100% LINEN - MIDDLE (5.1 OZ/YD²)



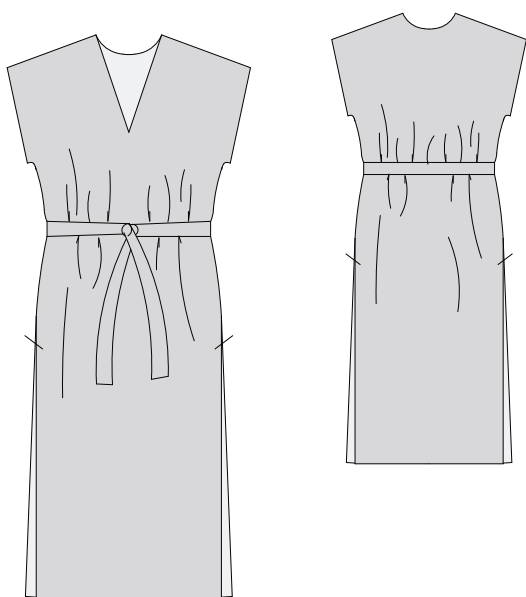
Our lovely model Masha is wearing Size 4/6.

PATTERN DETAILS

#FABRICSSTOREANTONIA PATTERN

ANTONIA PATTERN

Ladies Duo Sizes: 0/2 to 28/30



- Loose fitting.
- Pullover V neckline.
- Neckline facings.
- Maxi-length.
- Self belt.

SEWING INSTRUCTIONS

This pattern is featured on our blog “The Thread” at Fabrics-Store.com. There you will find step-by-step photo instructions and can ask questions, post comments, or share your progress. Simply visit: blog.fabrics-store.com and enter “Antonia Pattern” in the search box.

SIZING & YARDAGE

Ladies Size Guide Based on Body Measurements in Inches

	XS	S	M	L	XL	2X	3X	4X
Size	0/2	4/6	8/10	12/14	16/18	20/22	24/26	28/30
Bust	33-34	35-36	37-38	39-40	42-44	46-48	50-52	54-56
Waist	25-26	27-28	29-30	31-32	34-36	38-40	42-44	46-48
Hip	35-36	37-38	39-40	41-42	44-46	48-50	52-54	56-58

Finished Garment Measurements - Approximate in Inches

Size	0/2	4/6	8/10	12/14	16/18	20/22	24/26	28/30
Bust	41	43	45.5	48	52	56	60.5	65
Waist	41	43	45.5	48	52	56	60.5	65
Hip	41	43	45.5	48	52	56	60.5	65

Estimated Yardage* - 54" Width Linen

Size	0/2	4/6	8/10	12/14	16/18	20/22	24/26	28/30
Yardage	3 1/3 Yards for all sizes not including shrinkage.							

*Allow up to 10% extra fabric for shrinkage.

ALL SEAM ALLOWANCES ARE INCLUDED AND NOTED ON THE PATTERN AND IN THE TUTORIAL.

“Antonia” Sewing Pattern

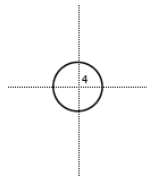
For instructions visit: blog.fabrics-store.com and enter “Antonia Pattern” in the search box.

**2 Inch
Square to
Check Print
Accuracy**

PRINT ONLY THIS PAGE FIRST TO CHECK SCALE

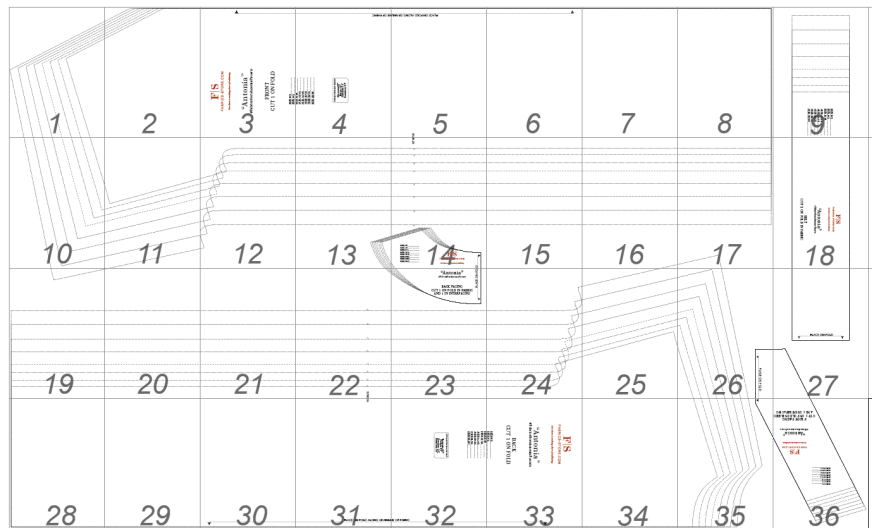
IMPORTANT! PRINT AT ACTUAL SIZE, 100%, OR NO SCALING.

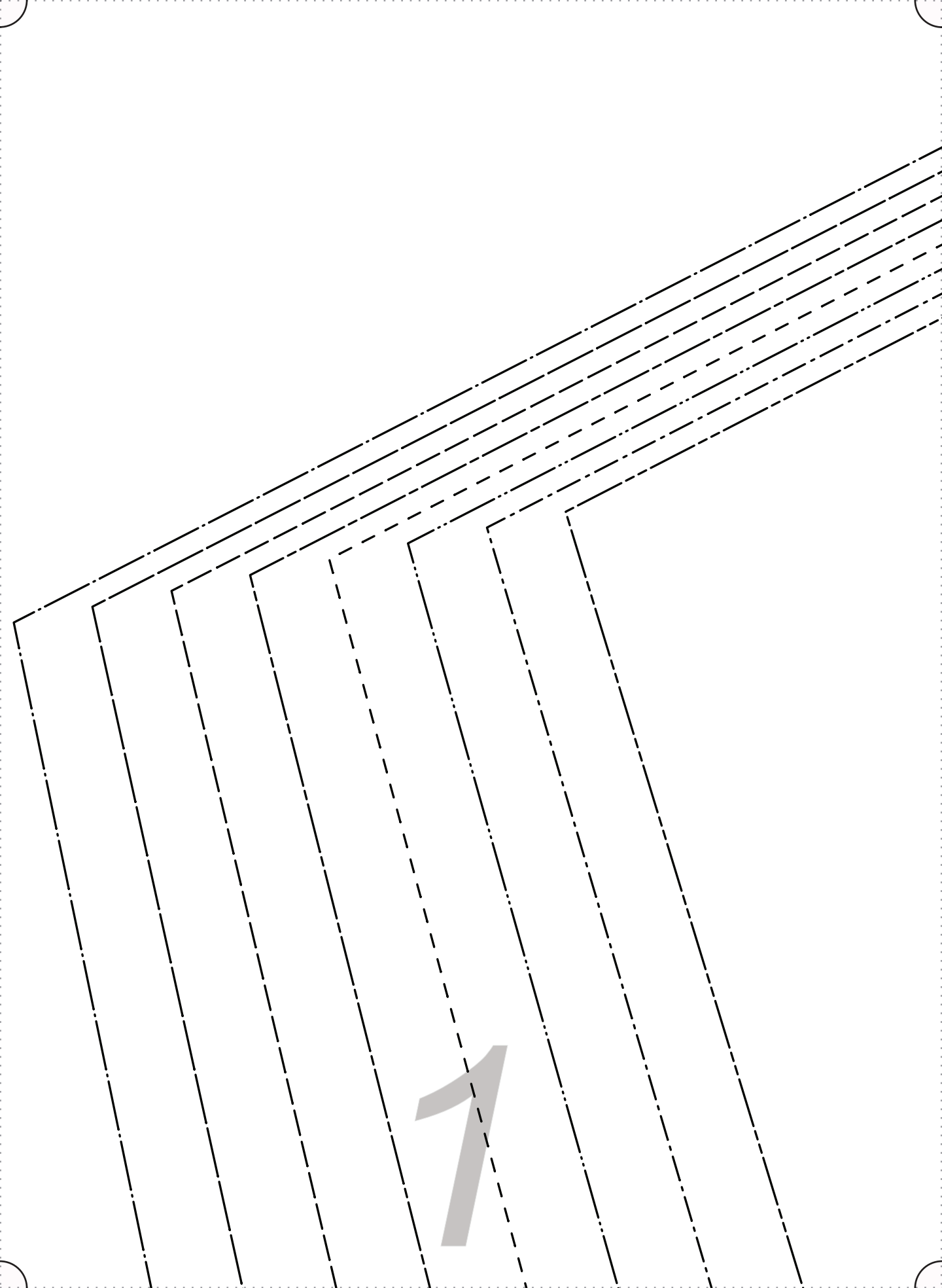
Formatted for paper sizes A4 and Letter.

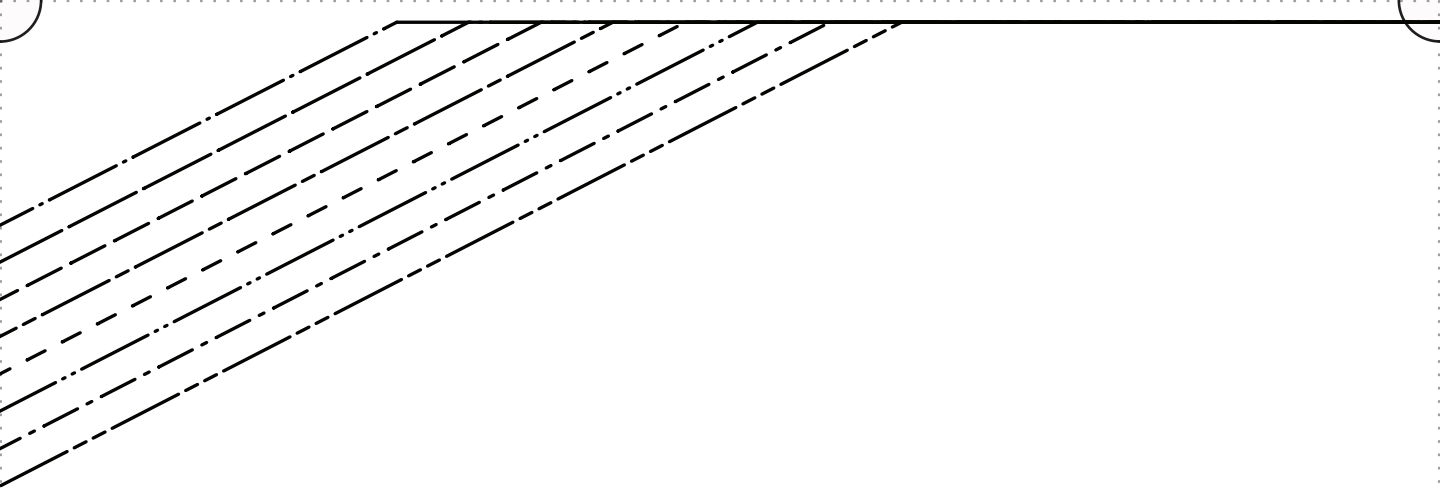


Simply overlap the page margins and align the markings in each corner to complete the circle and tape in place.

Layered PDF:
This pattern has embedded layers so you can print all sizes or a single size. See your .pdf viewers 'Layers' menu.







2

F|S

FABRICS-STORE.COM

Our linen is nothing short of addicting

3

“Antonia”

#FabricStoreAntoniaPattern

FRONT
CUT 1 ON FOLD

SIZE 0/2 _____

SIZE 4/6 _____

SIZE 8/10
SIZE 12/14 - - - -
SIZE 16/18
SIZE 20/22
SIZE 24/26
SIZE 28/30
.....

4

All Seam Allowances Included
Main seams: 3/8"
Neckline: 3/8"
Sleeve hem: 3/4"
Bottom hem: 3/4"

PLACE ON FOLD ALONG GRAINLINES

5

ATCH



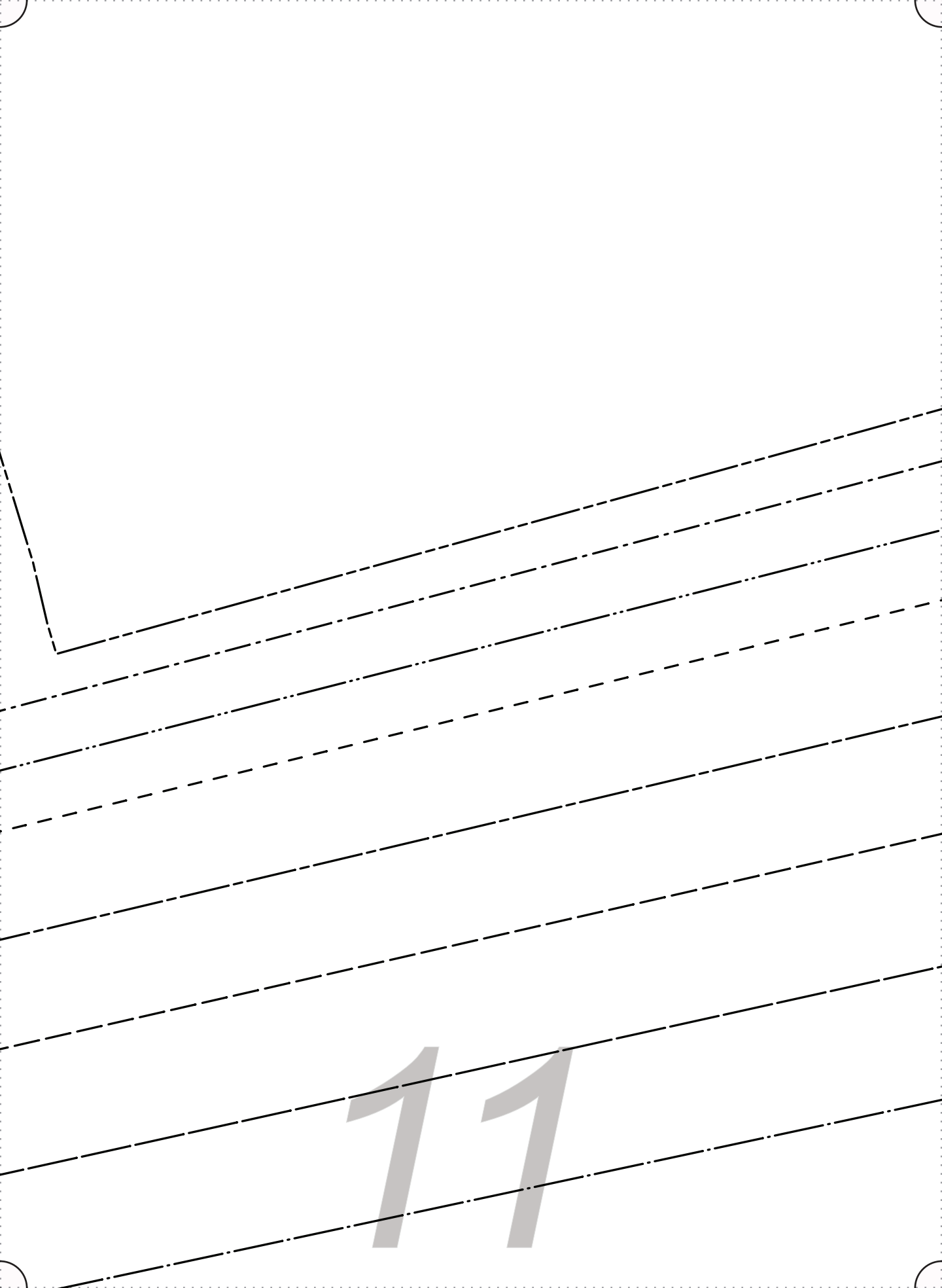
6

7

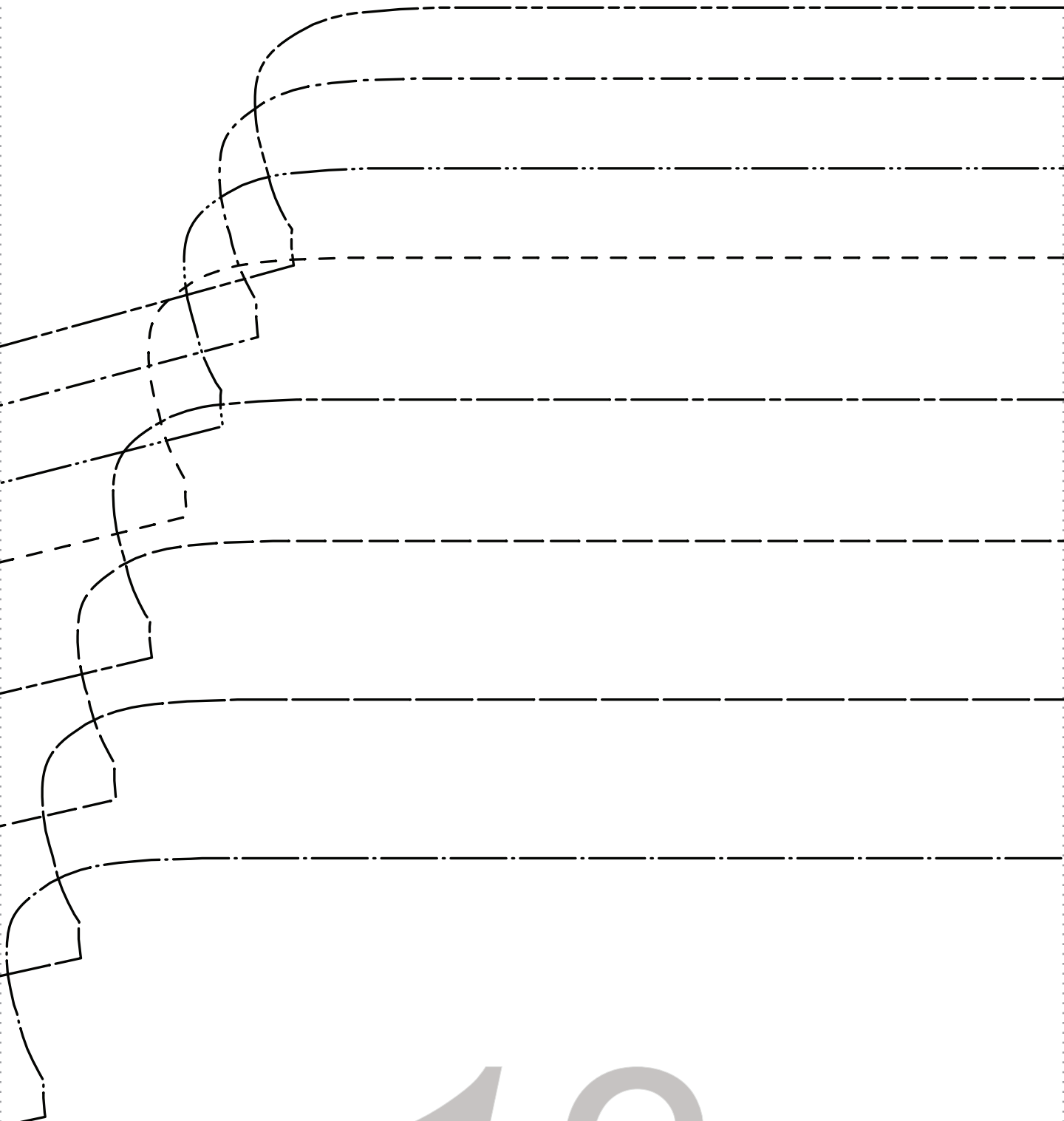
8

SIZE 0/2 _____
SIZE 4/6 _____
SIZE 8/10 _____
SIZE 12/14 _____
SIZE 16/18 _____
SIZE 20/22 _____
SIZE 24/26 _____
SIZE 28/30 _____

10

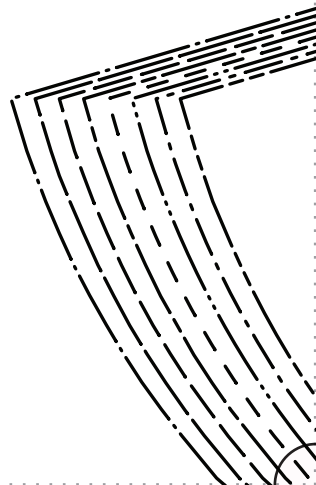


11



12

13



SLIT NO



- SIZE 0/2 _____
- SIZE 4/6 _____
- SIZE 8/10 _____
- SIZE 12/14 _____
- SIZE 16/18 _____
- SIZE 20/22 _____
- SIZE 24/26 _____
- SIZE 28/30 _____



FABRICS-STORE.COM

Our linen is nothing short of addicting



15

16

Handwriting practice area with seven sets of horizontal lines. Each set consists of a solid top line, a dashed middle line, and a solid bottom line.

17

F|S

FABRICS-STORE.COM

Our linen is nothing short of addictive

“**Antonia**”

#FabricsStoreAntoniaPattern

BELT

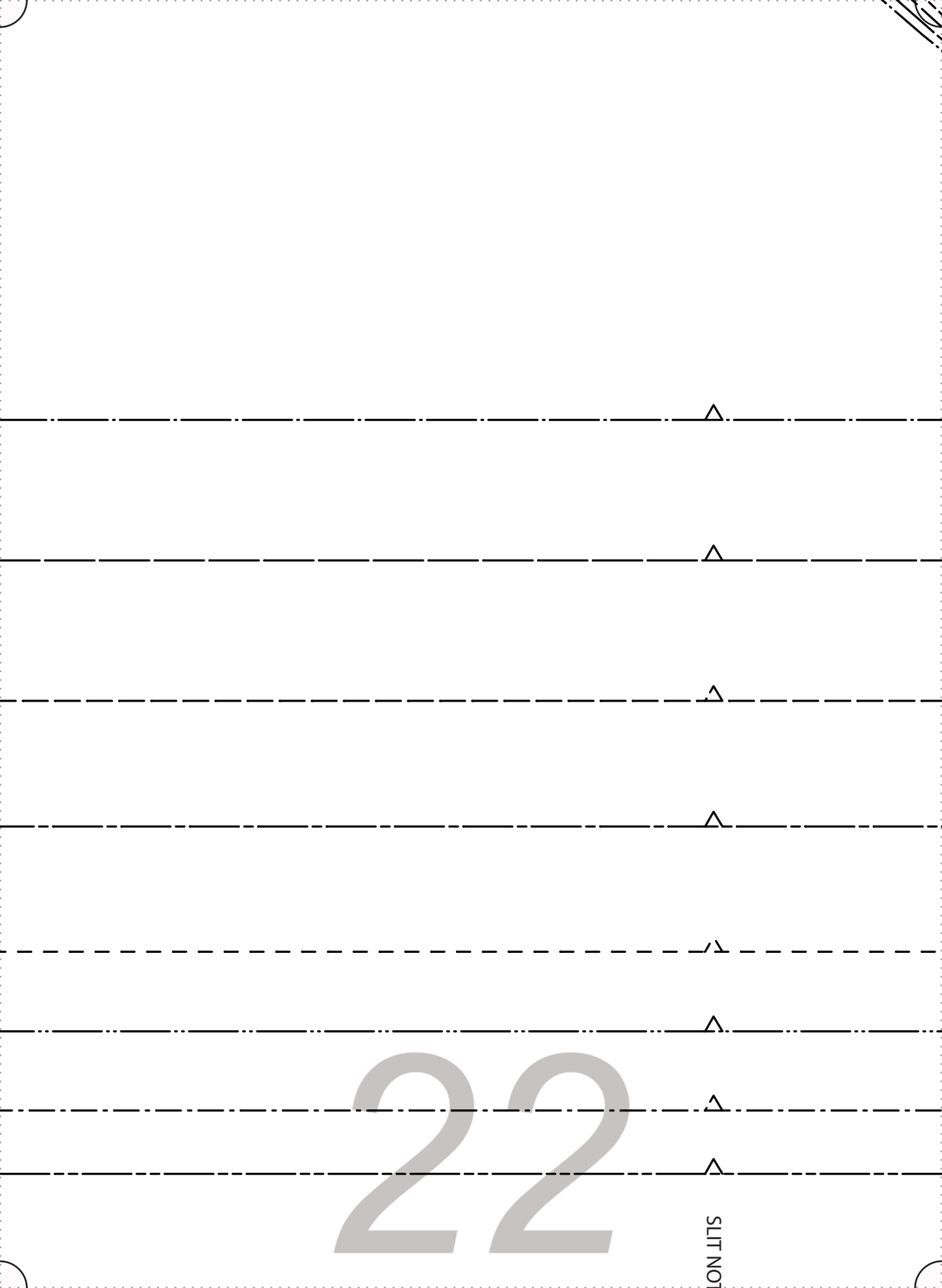
CUT 2 ON FOLD IN FABRIC

18

19

20

21



22

SLIT NOT

“Antonia”

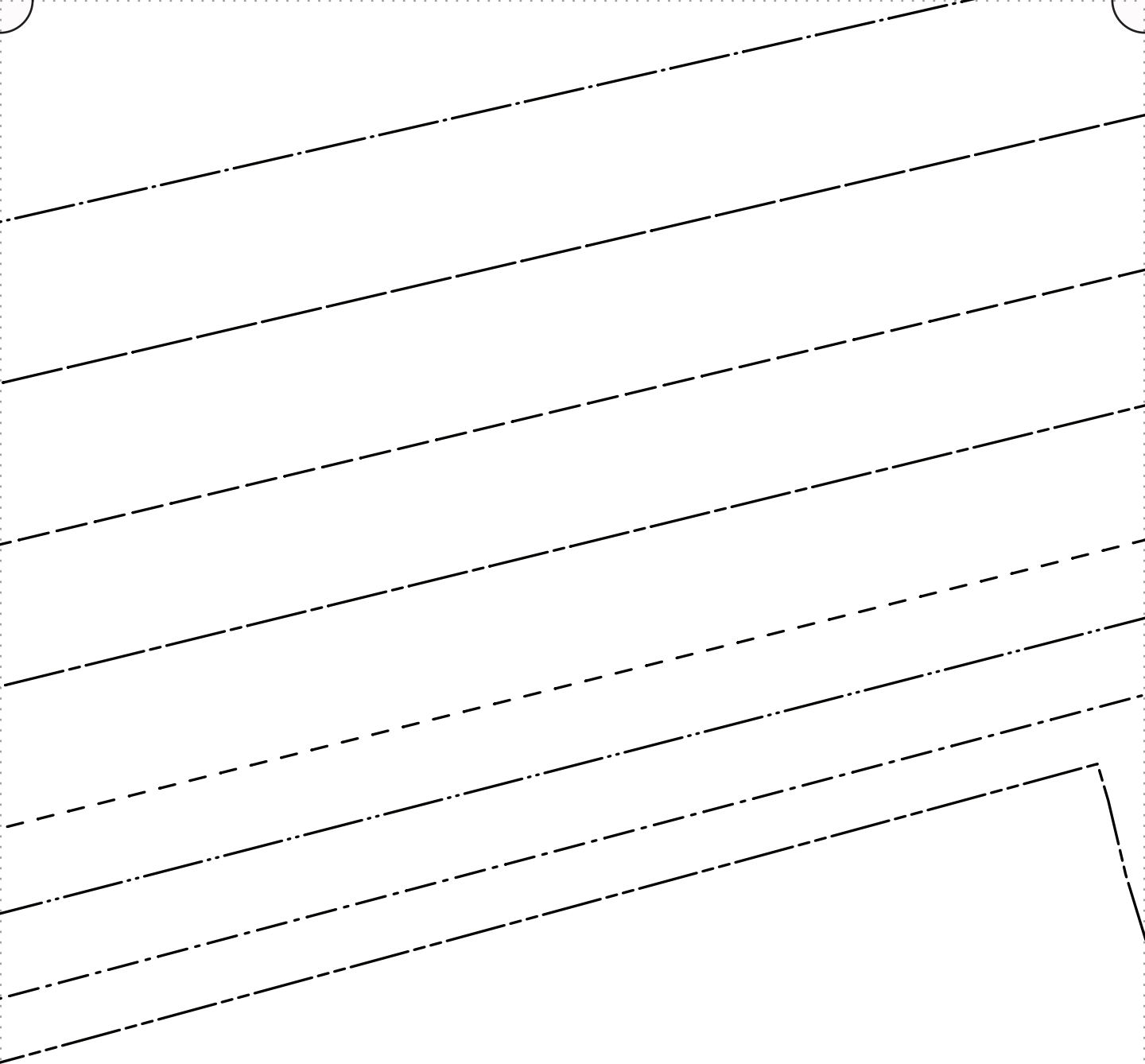
#FabricsStoreAntoniaPattern

BACK FACING
CUT 1 ON FOLD IN FABRIC
AND 1 IN INTERFACING

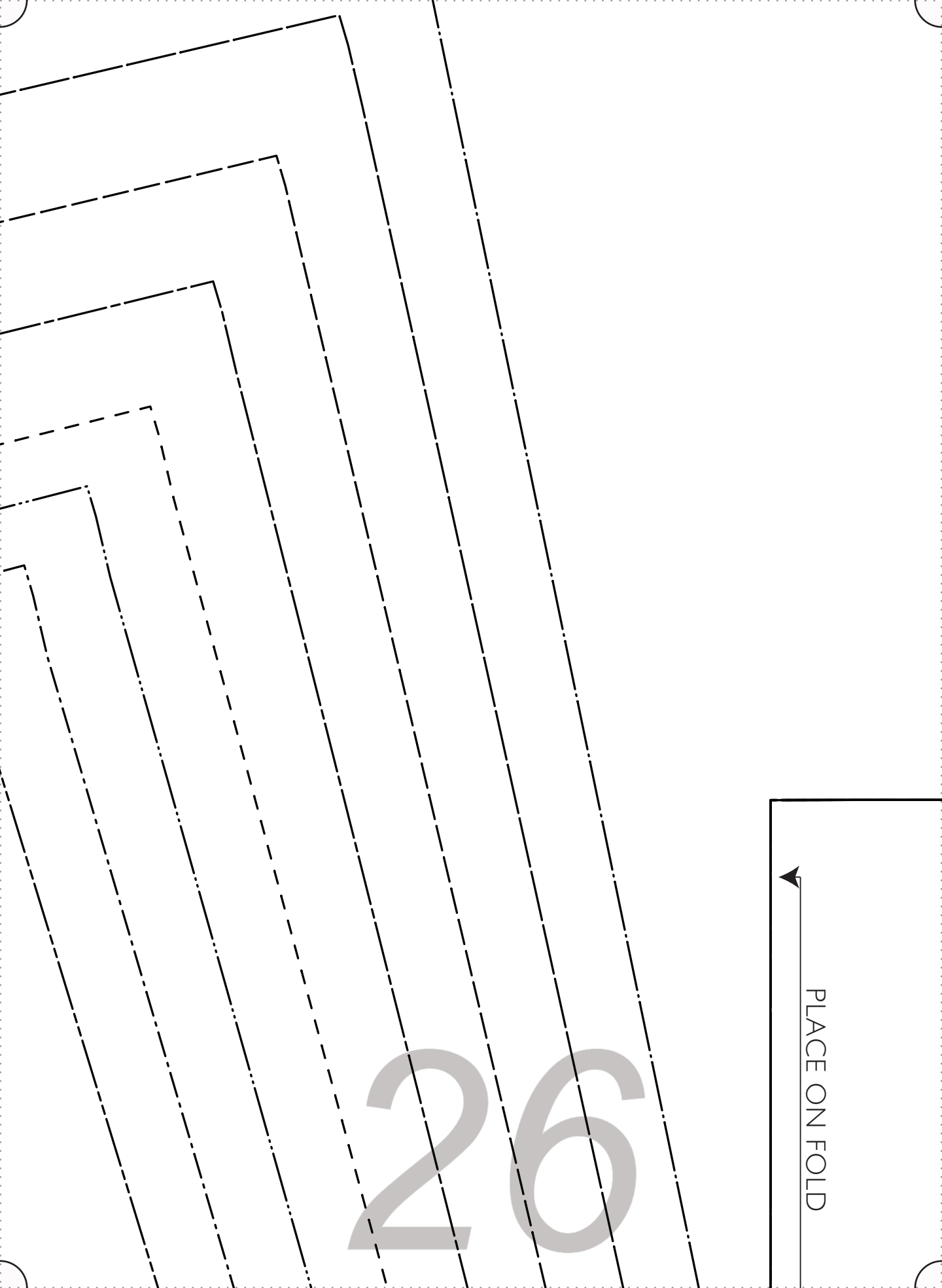
PLACE ON FOLD

23

24

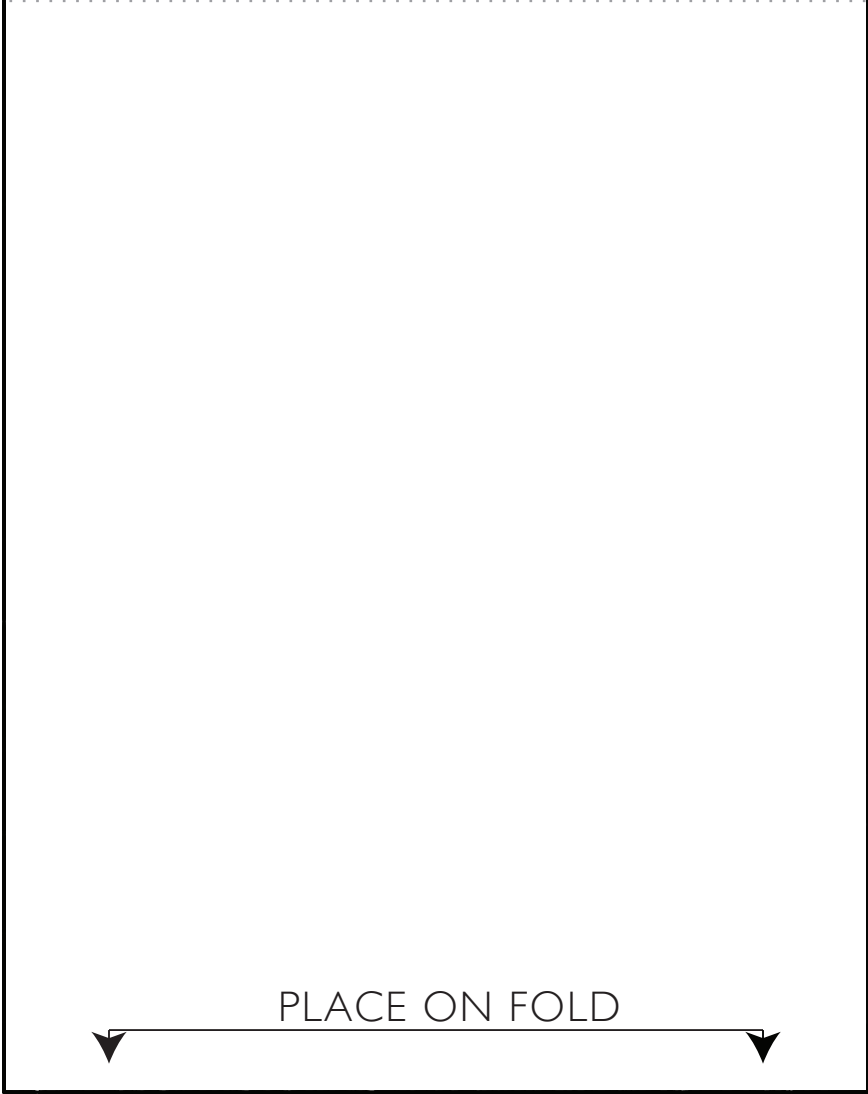


25



26

PLACE ON FOLD



27

28

29

30



31

PLACE ON FOLD ALONG GRAINLINE

SIZE 8/10

SIZE 12/14

SIZE 16/18

SIZE 20/22

SIZE 24/26

SIZE 28/30

All Seam Allowances Included

Main seams: 3/8"

Neckline: 3/8"

Sleeve hem: 3/4"

Bottom hem: 3/4"

32

F|S

FABRICS-STORE.COM

Our linen is nothing short of addicting

“Antonia”

#FabricStoreAntoniaPattern

BACK

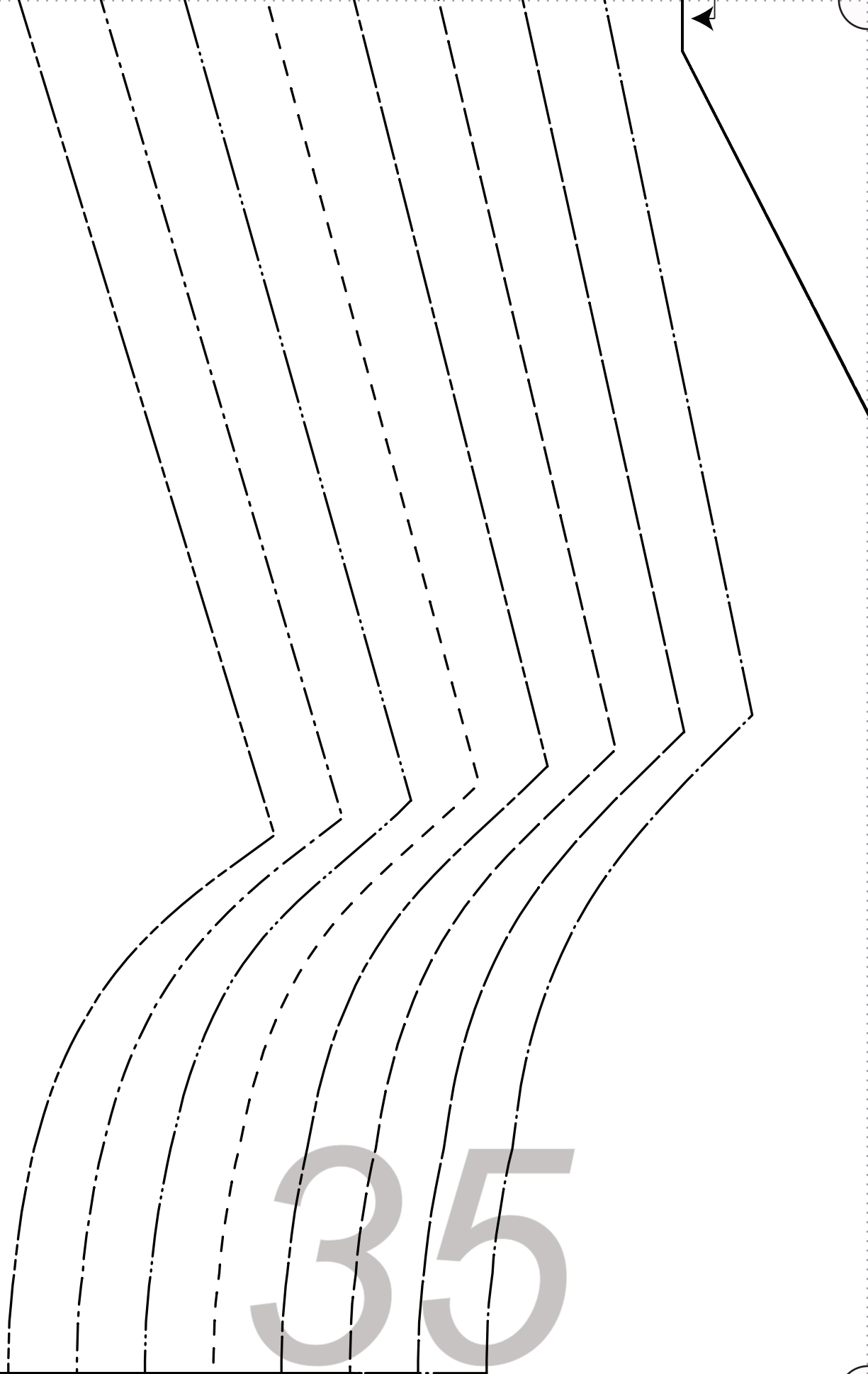
CUT 1 ON FOLD

33

SIZE 0/2

SIZE 4/6

34



CUT 1 ON FOLD IN FABRIC
FRONT FACING
AND 1 IN INTERFACING

#FabricsStoreAntoniaPattern

“Antonia”

Our linen is nothing short of addicting

FABRICS-STORE.COM

F|S

- SIZE 0/2
- SIZE 4/6
- SIZE 8/10
- SIZE 12/14
- SIZE 16/18
- SIZE 20/22
- SIZE 24/26
- SIZE 28/30

36

Thank you

*We work hard on making our patterns beautiful
enough to meet your standards.*

*If you feel like sharing praise or helpful criticism,
please send us your comments to ask@fabrics-store.com*